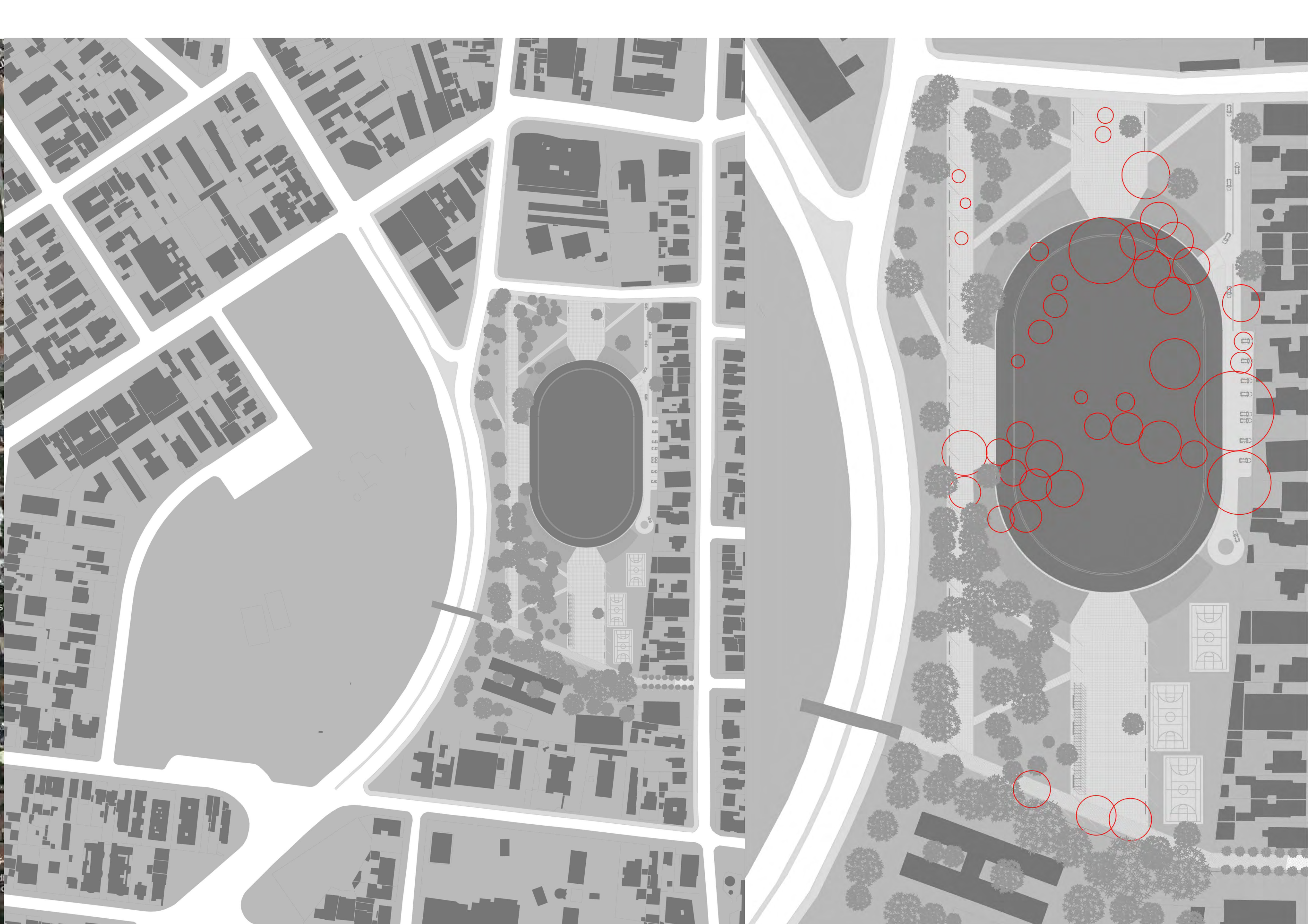
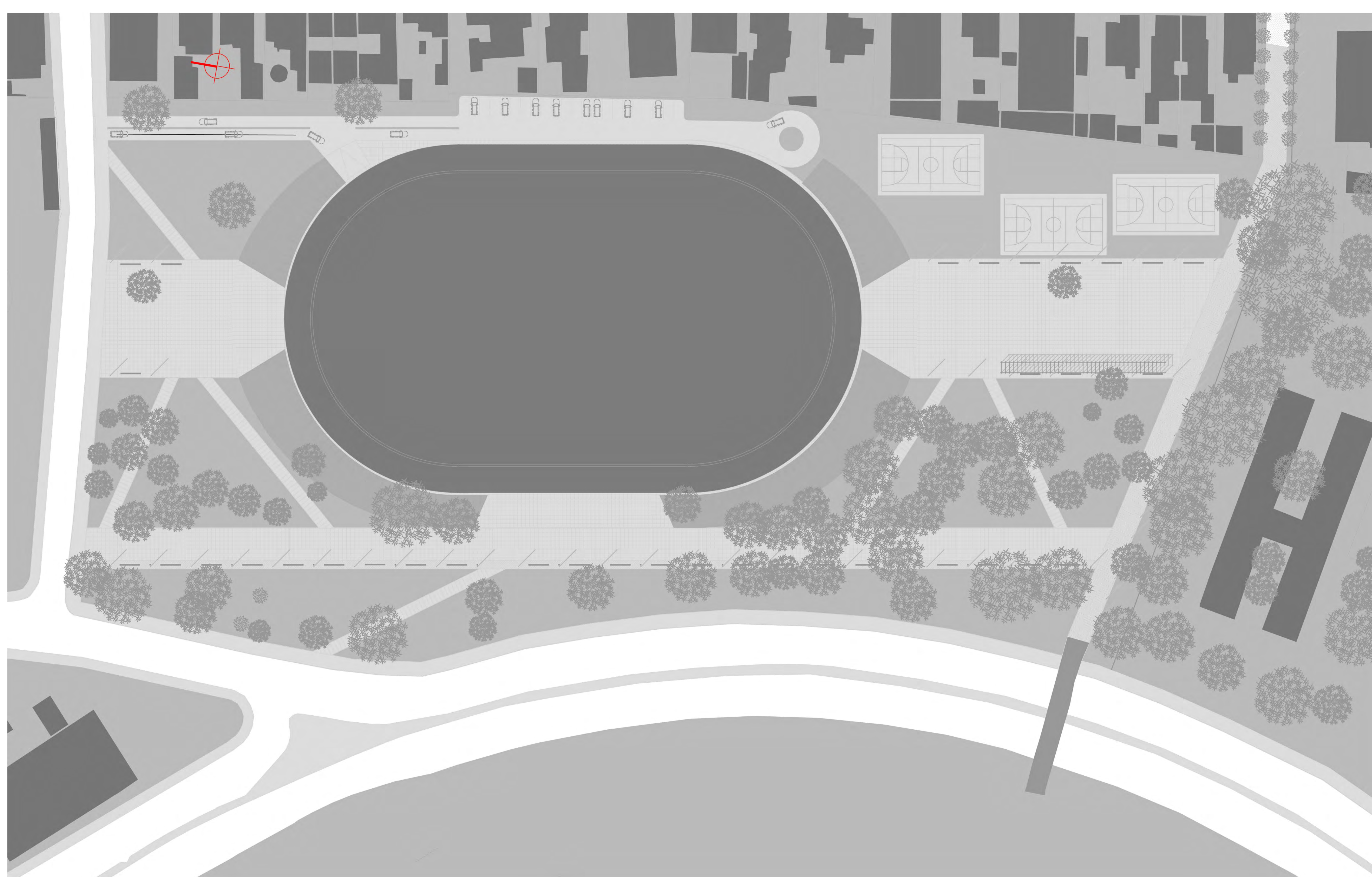


BAIRRO MOÍNHOS DE VENTO (COPA DAVIS 1998)

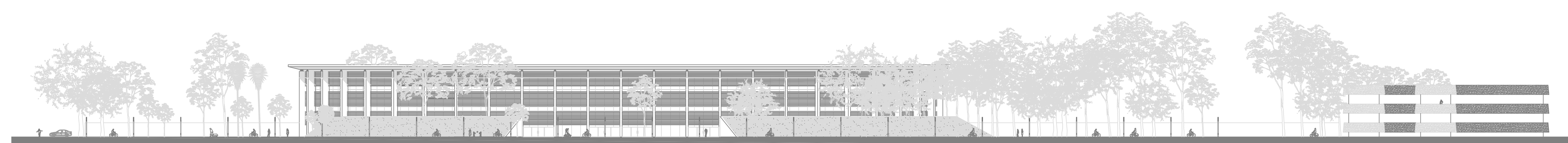


LOCALIZAÇÃO  
ESCALA: 1:2000

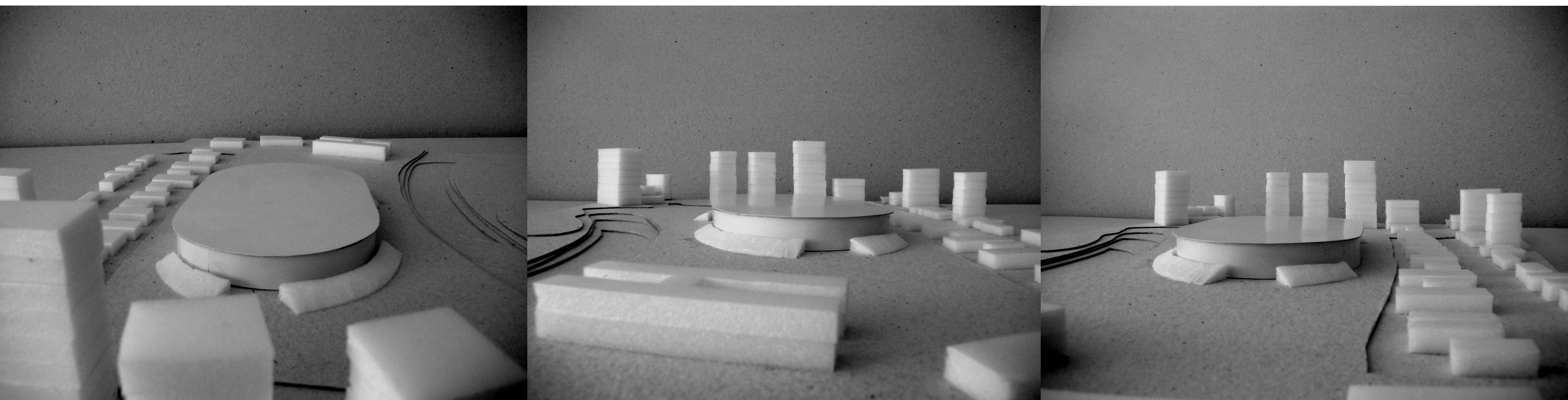
ÁRVORES RETIRADAS  
ESCALA: 1:1000



IMPLANTAÇÃO  
ESCALA: 1:500



ELEVAÇÃO LESTE  
ESCALA: 1:500

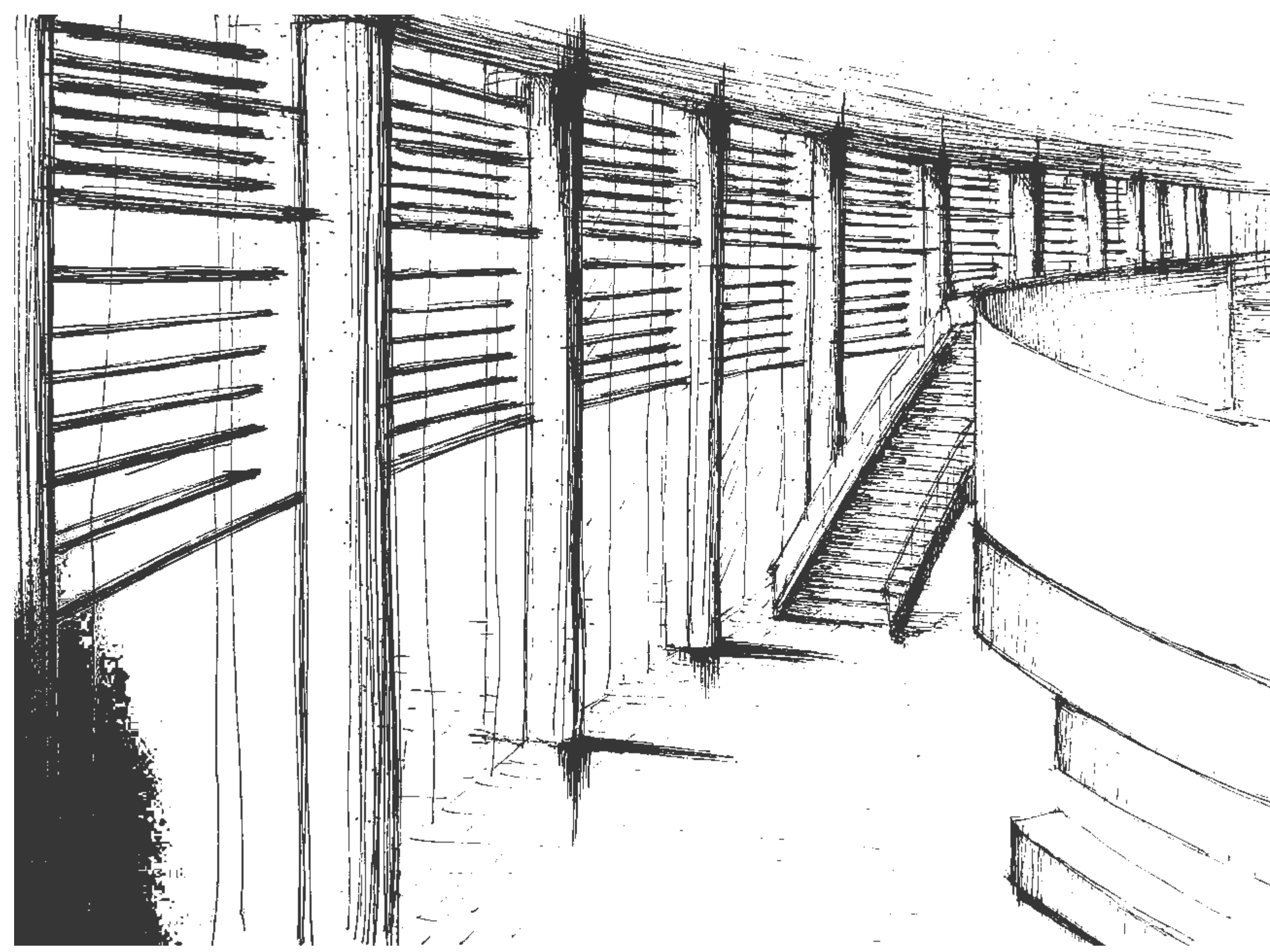
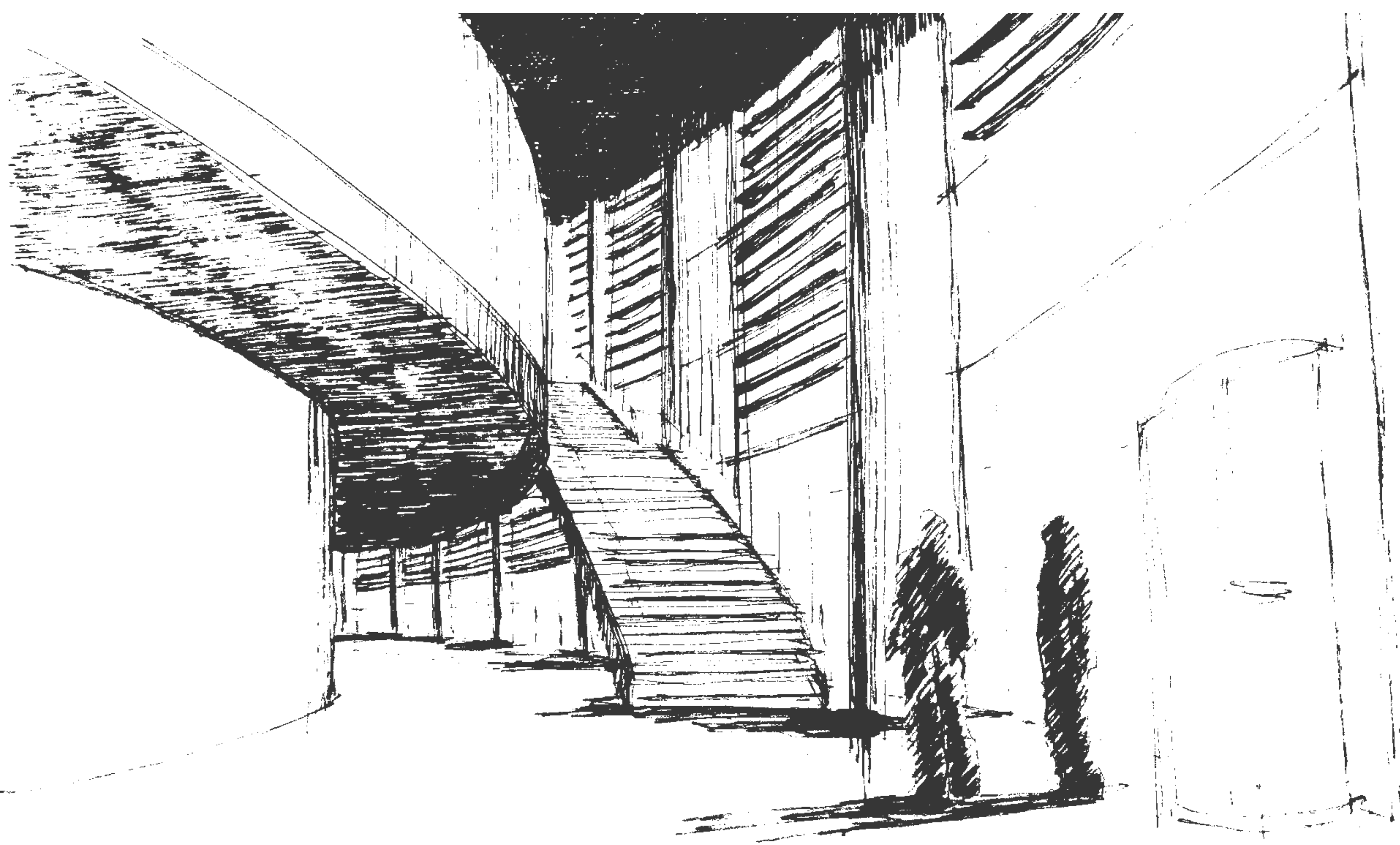
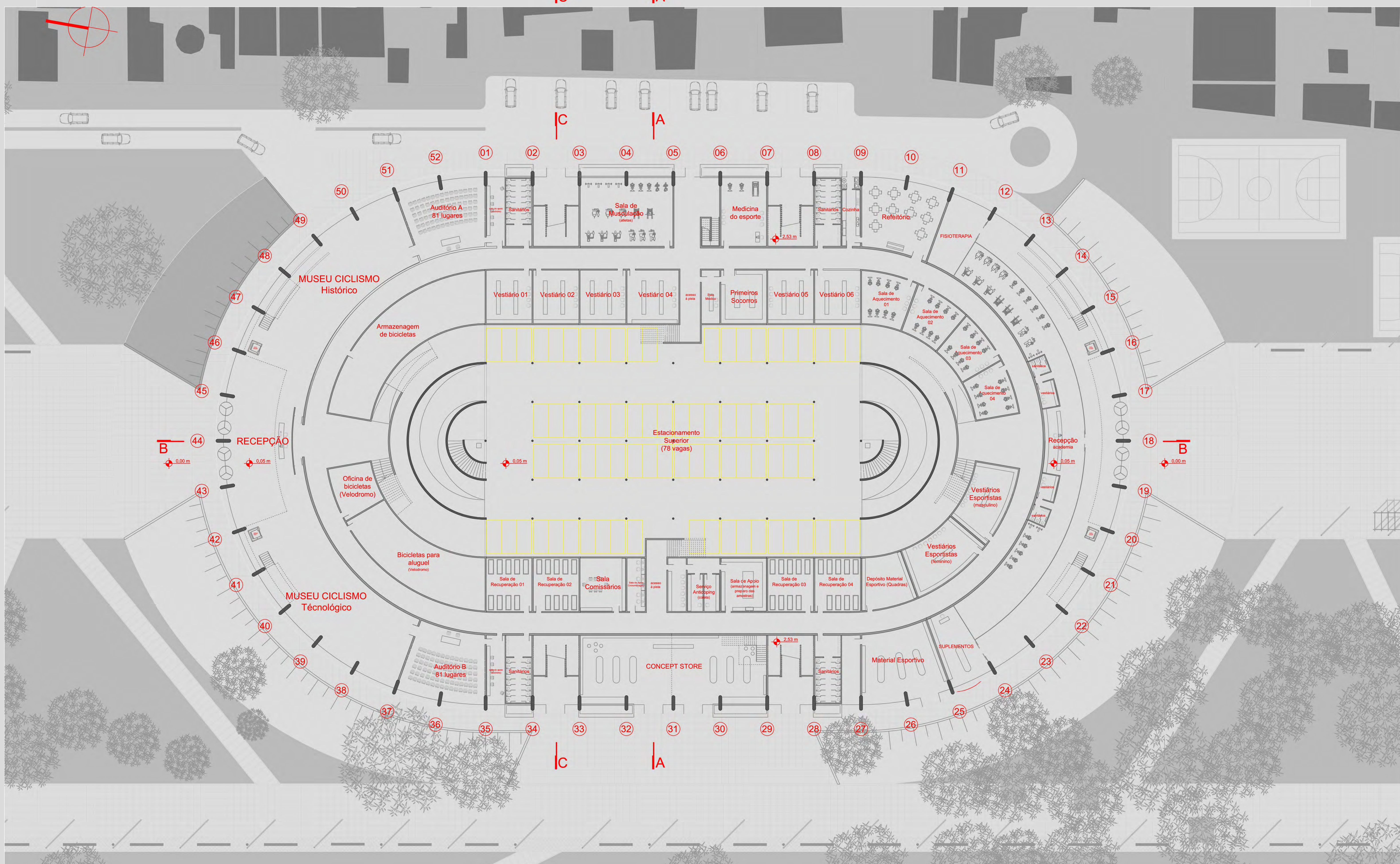
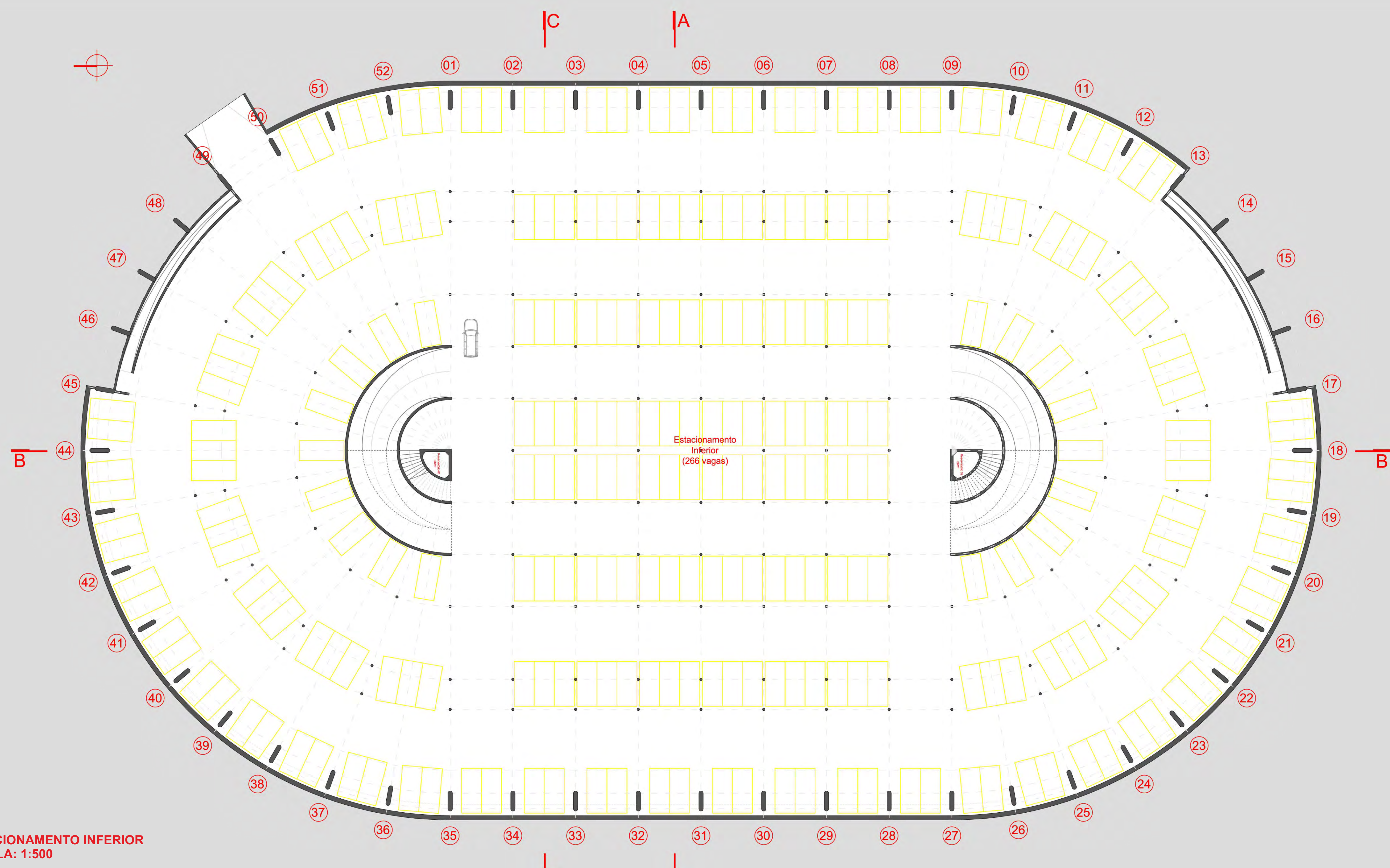


IMAGENS MAQUETE

# VELODROMO DE PORTO ALEGRE

UNIVERSIDADE FEDERAL DO RIO GRANDE DO SUL - UFRGS - TCC ARQUITETURA - 2013/1  
MILTON QUINHONES GUERRA  
ORIENTADOR: CLAUDIO CALOVI PEREIRA

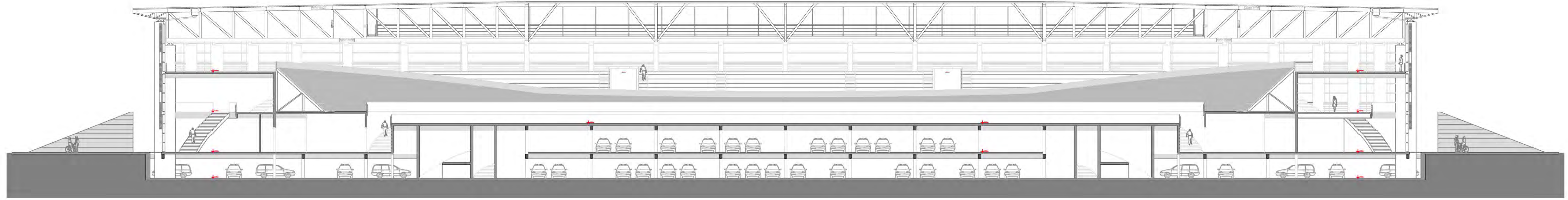




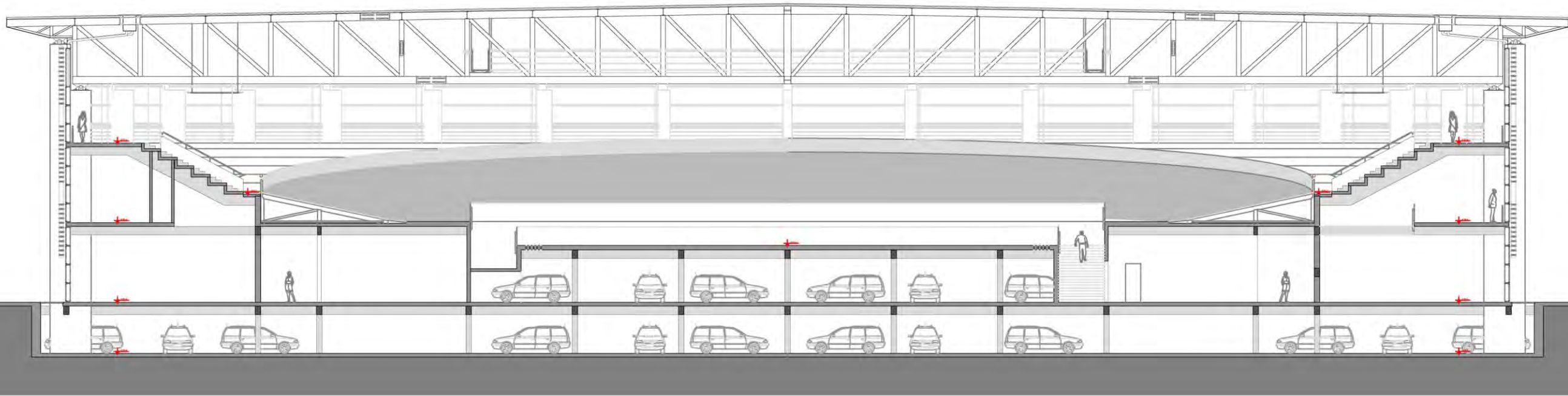
# VELODROMO DE PORTO ALEGRE

UNIVERSIDADE FEDERAL DO RIO GRANDE DO SUL - UFRGS - TCC ARQUITETURA - 2013/1  
MILTON QUINHONES GUERRA  
ORIENTADOR: CLAUDIO CALOVI PEREIRA

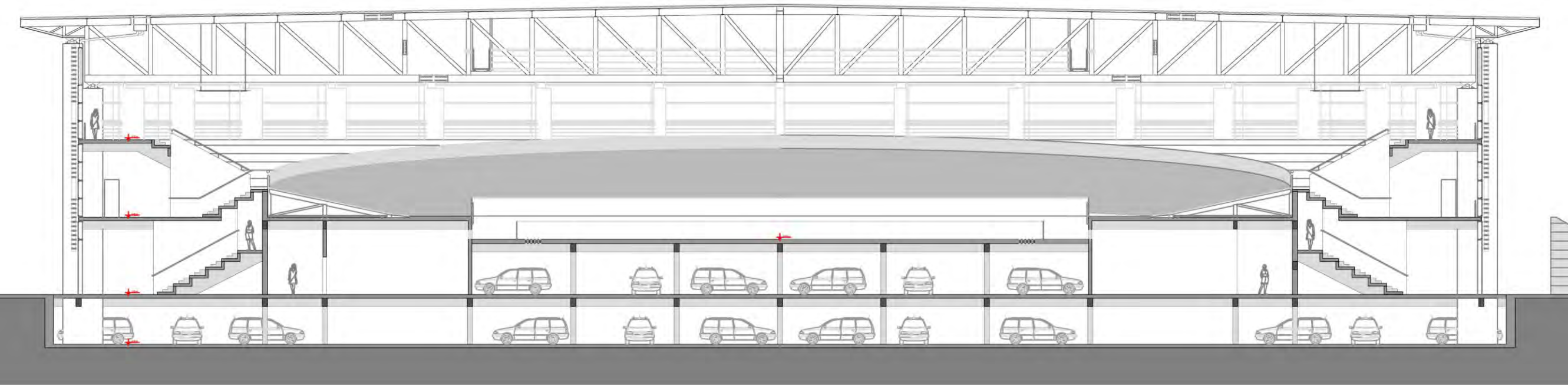




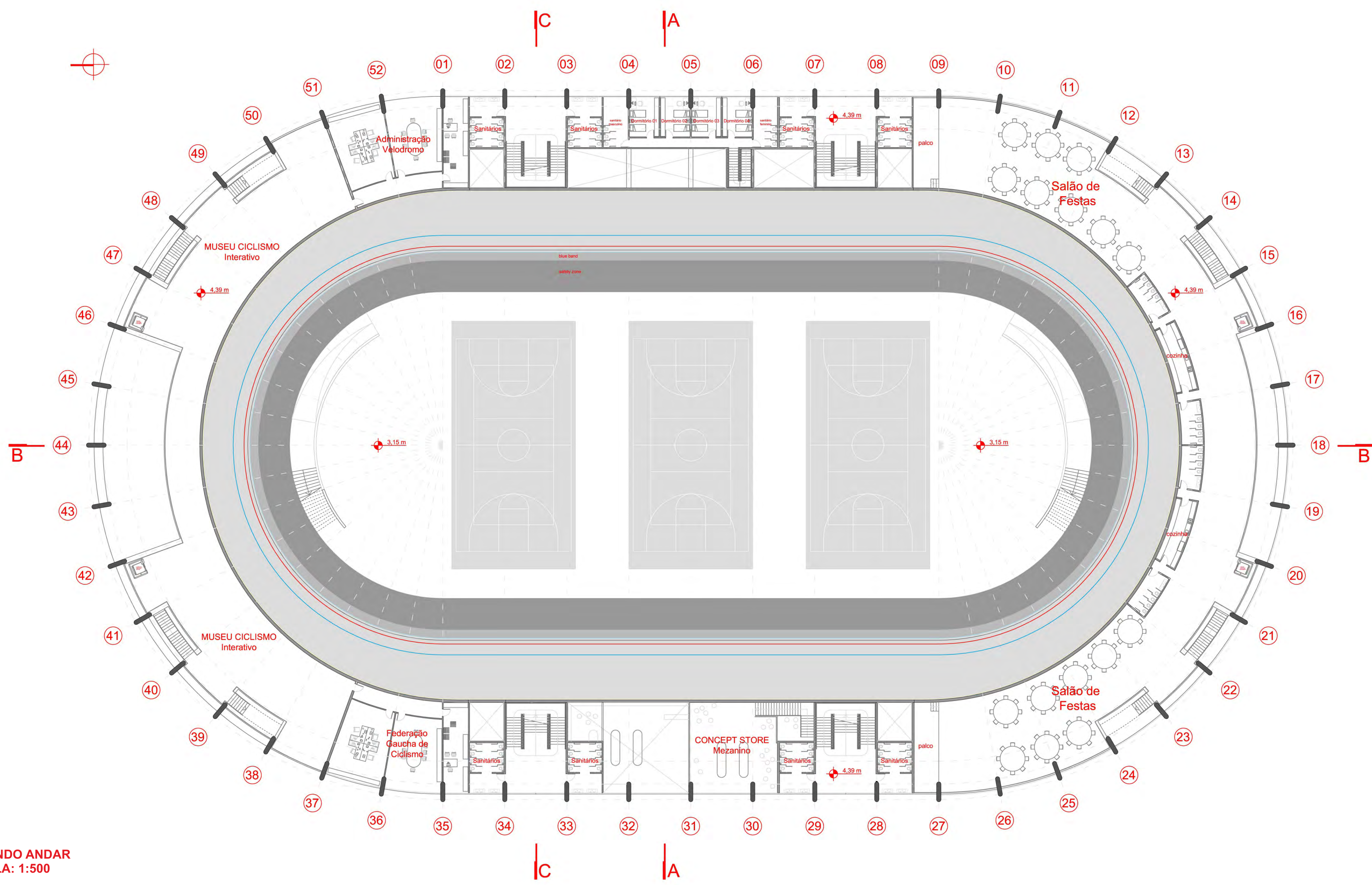
CORTE BB  
ESCALA: 1:250



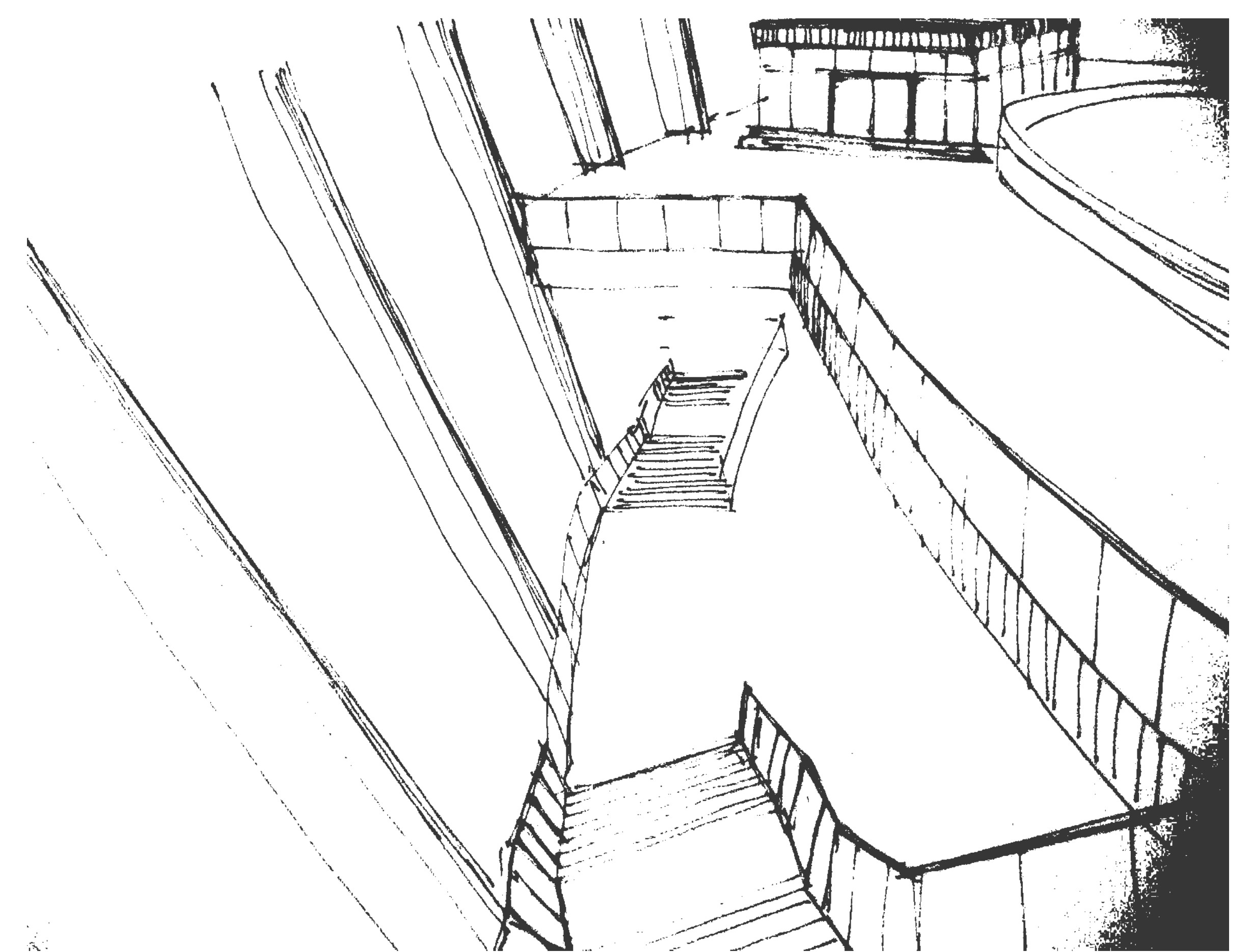
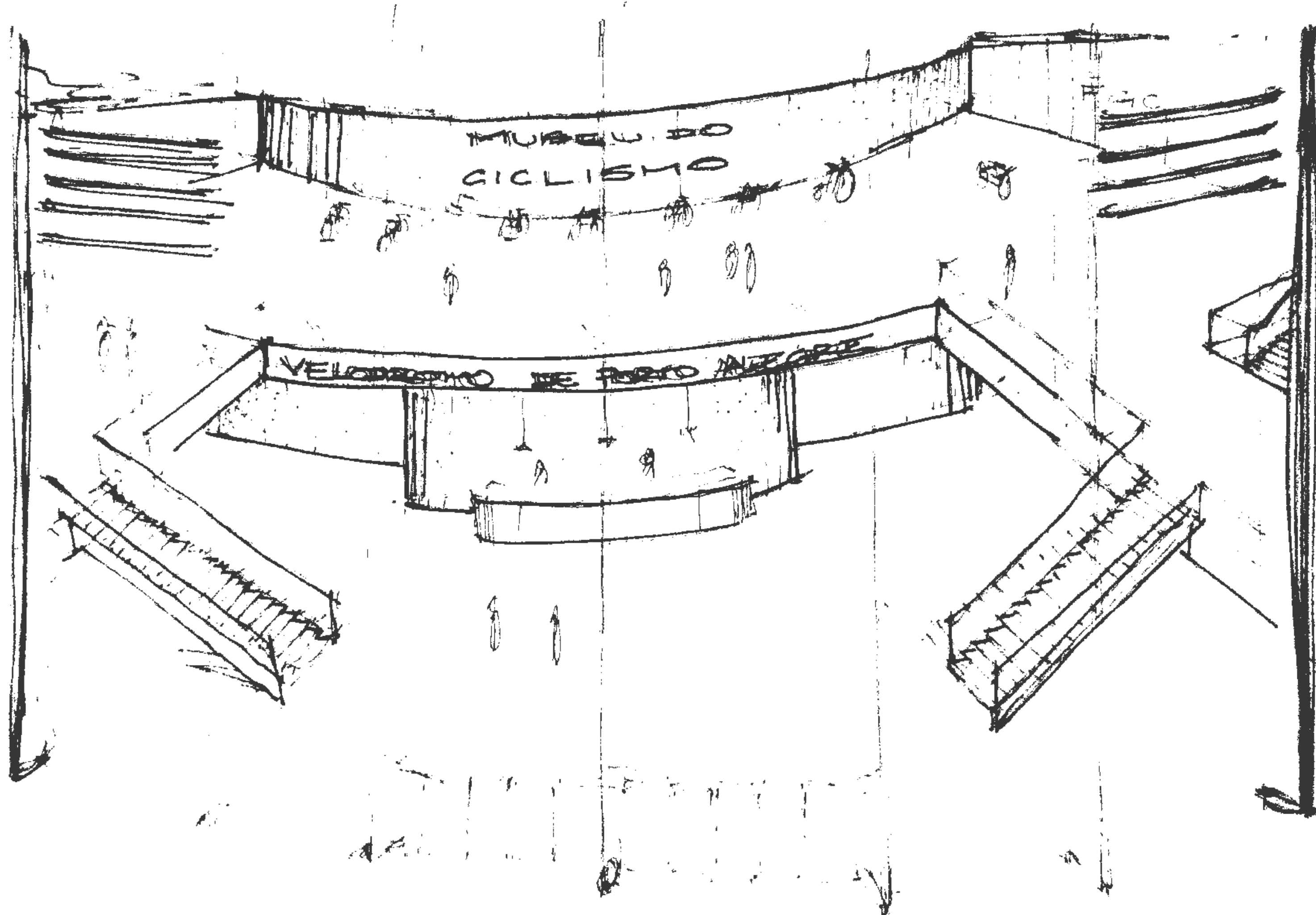
CORTE AA  
ESCALA: 1:250



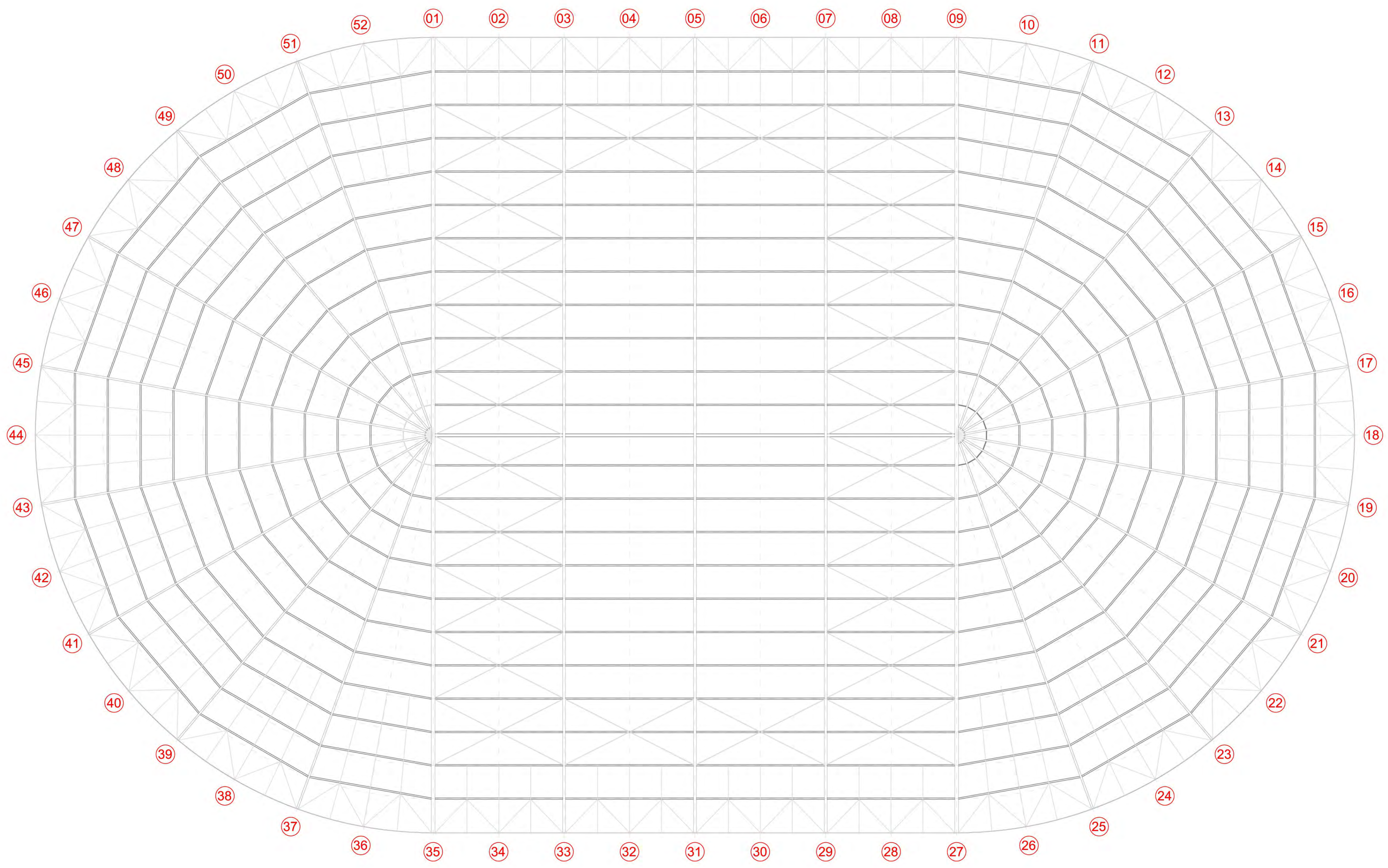
CORTE AA  
ESCALA: 1:250



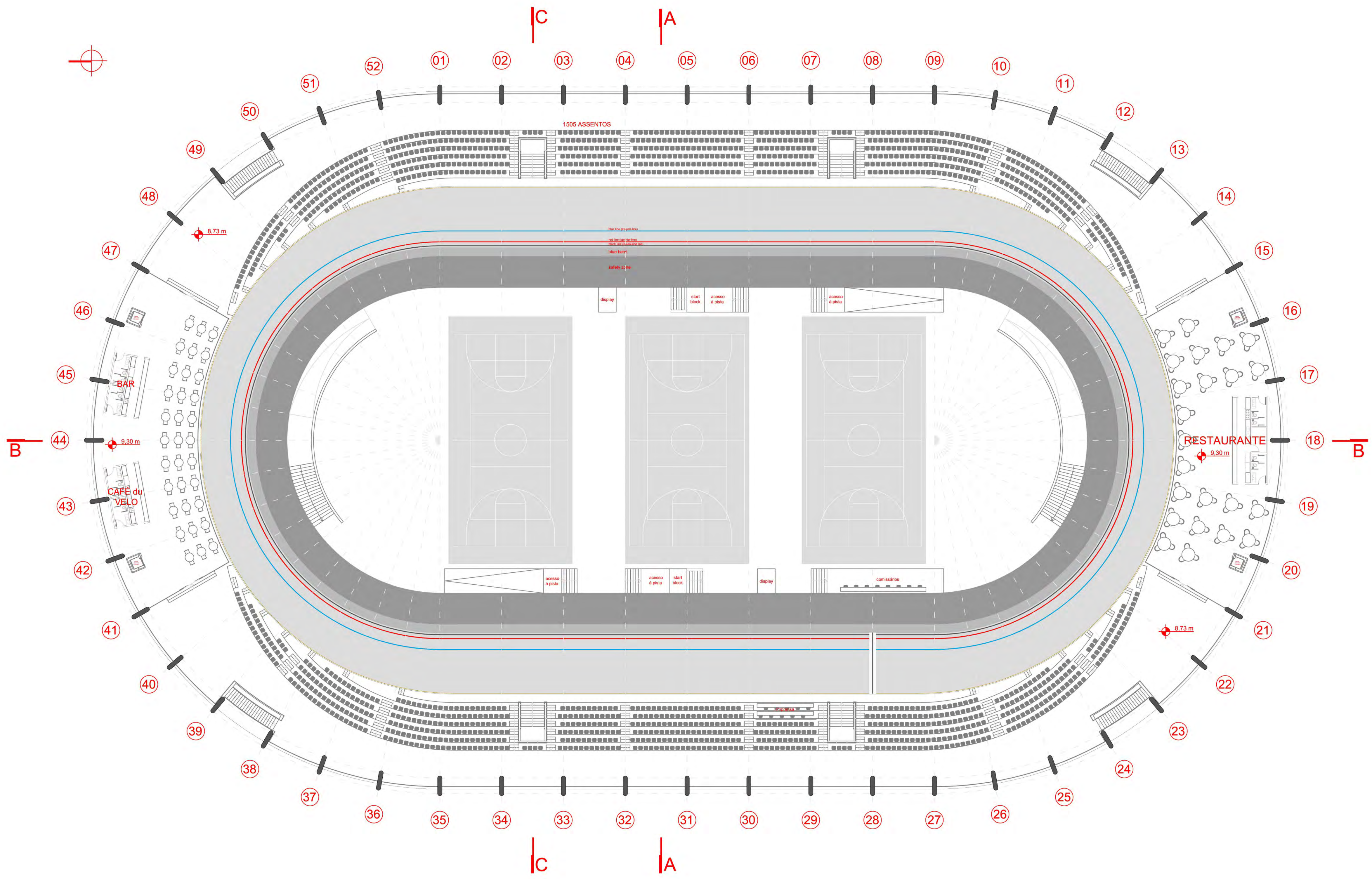
SEGUNDO ANDAR  
ESCALA: 1:500



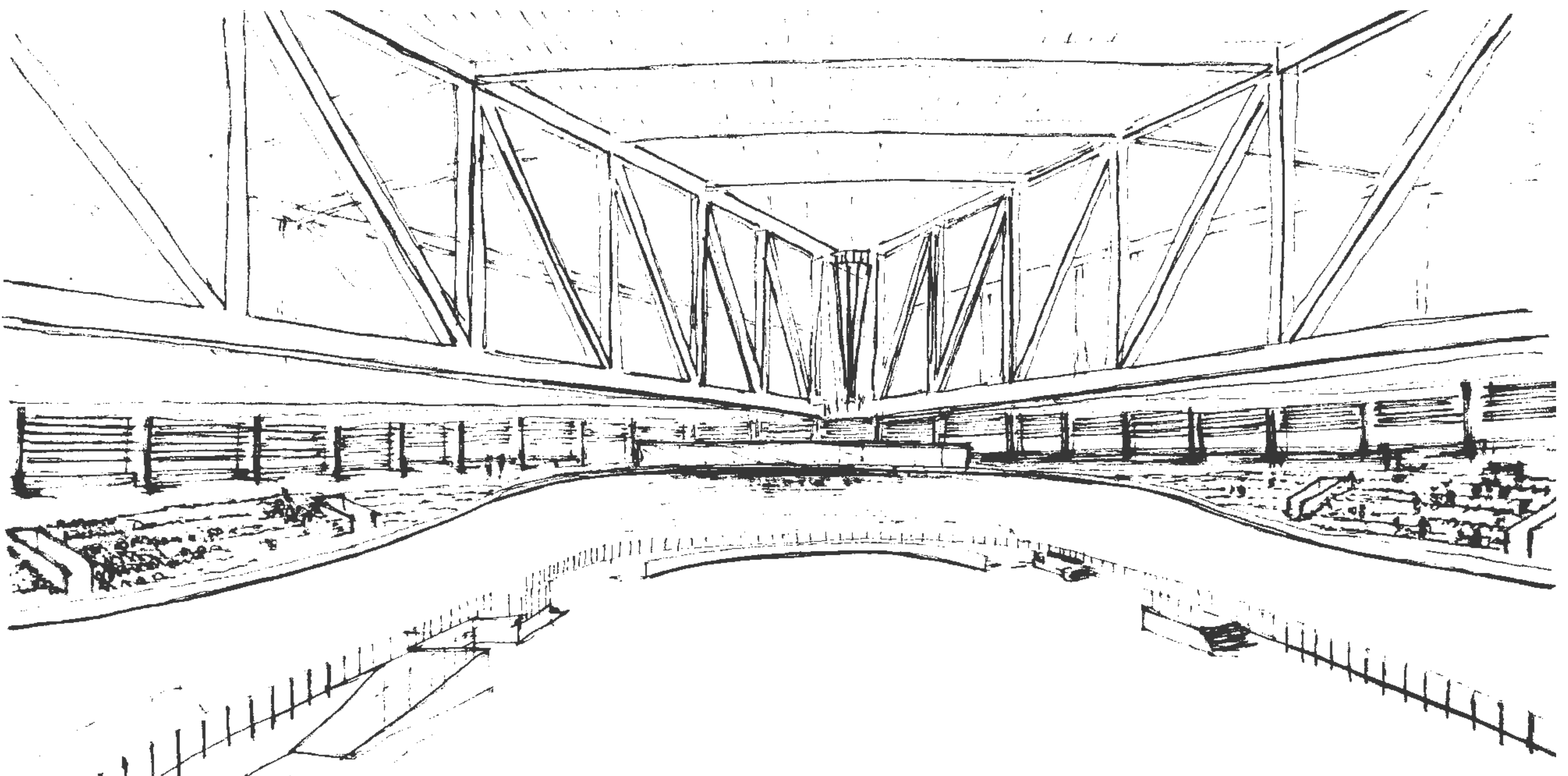




COBERTURA  
ESCALA: 1:250



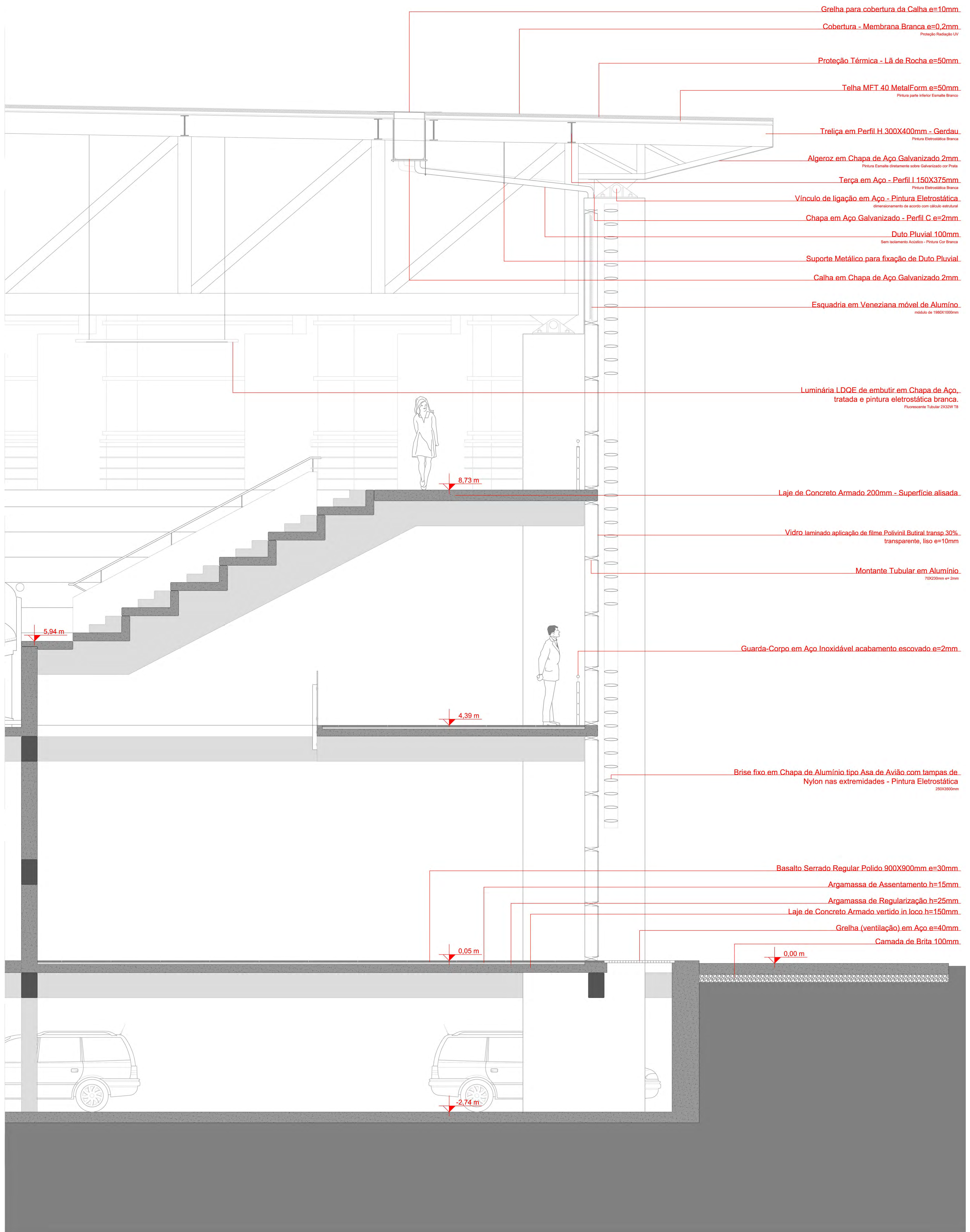
PISTA  
ESCALA: 1:250



# VELODROMO DE PORTO ALEGRE

UNIVERSIDADE FEDERAL DO RIO GRANDE DO SUL - UFRGS - TCC ARQUITETURA - 2013/1  
MILTON QUINHONES GUERRA  
ORIENTADOR: CLAUDIO CALOVI PEREIRA



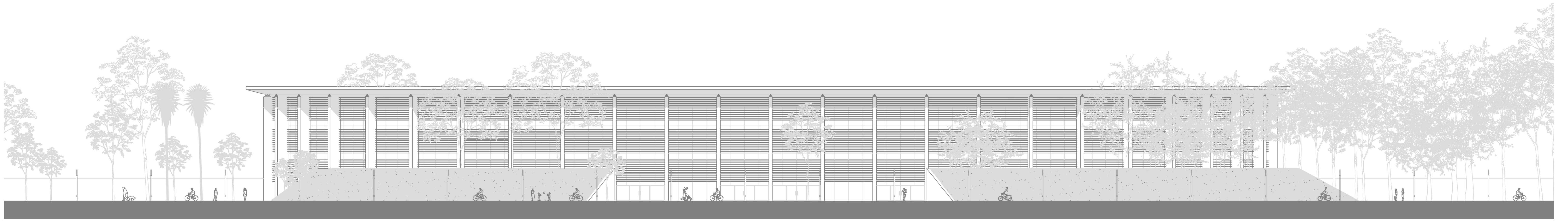


CORTE DE PELE  
 ESCALA: 1:25

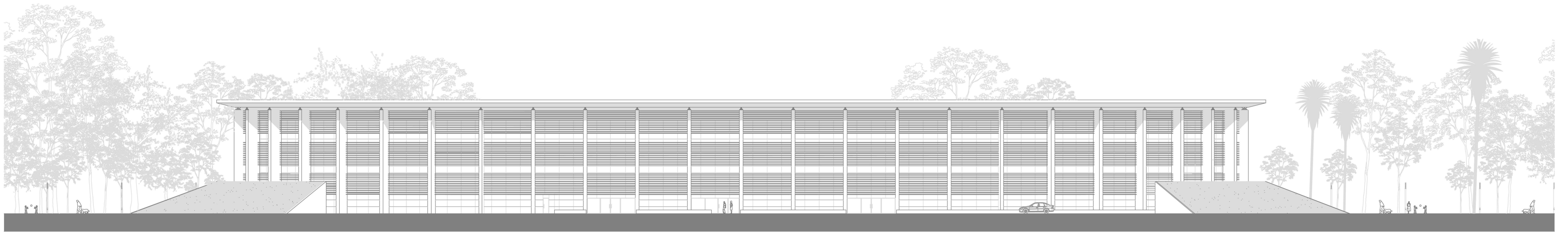
# VELODROMO DE PORTO ALEGRE

UNIVERSIDADE FEDERAL DO RIO GRANDE DO SUL - UFRGS - TCC ARQUITETURA - 2013/1  
 MILTON QUINHONES GUERRA  
 ORIENTADOR: CLAUDIO CALOVI PEREIRA

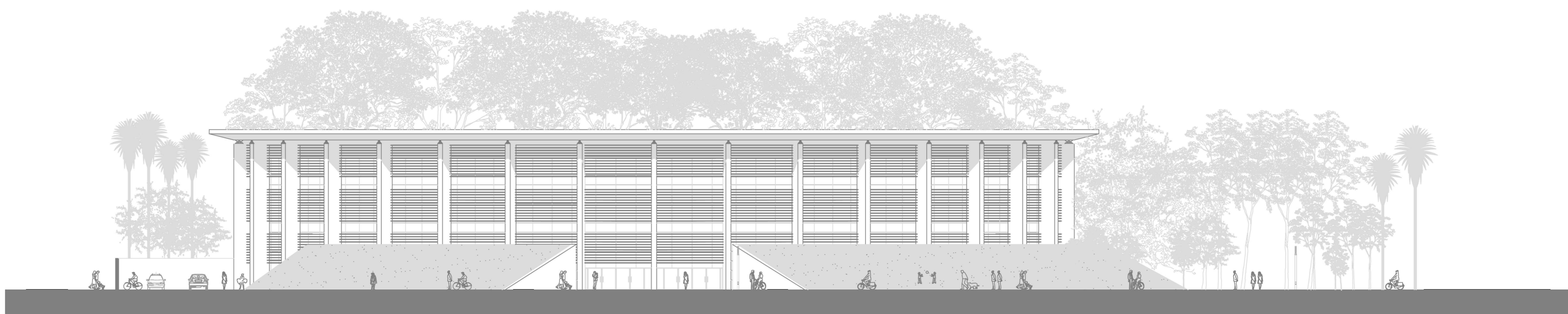




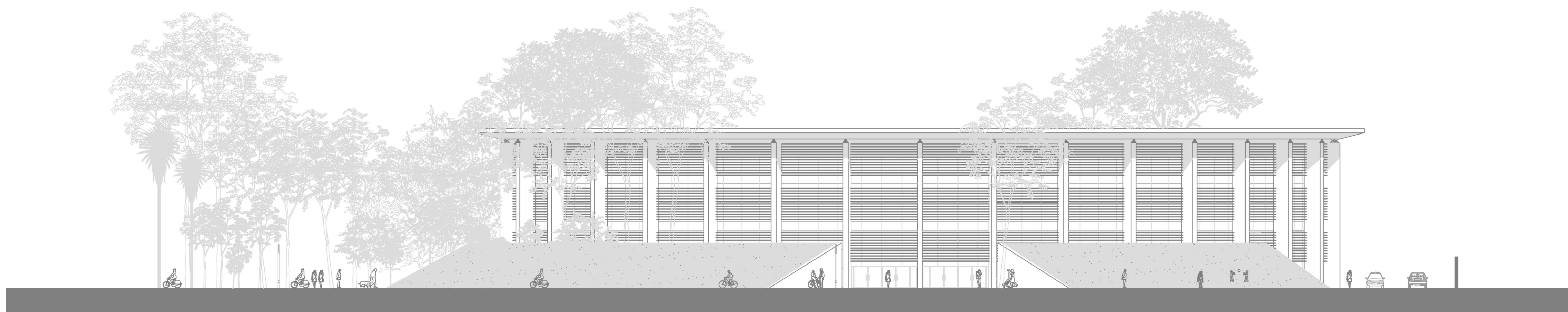
ELEVAÇÃO LESTE  
ESCALA: 1:250



ELEVAÇÃO OESTE  
ESCALA: 1:250



ELEVAÇÃO NORTE  
ESCALA: 1:250



ELEVAÇÃO SUL  
ESCALA: 1:250

