

Placebo response in trials with anxiety, obsessive-compulsive, and stress disorders patients across the lifespan: A three-level meta-analysis.

S1 Appendix

Content

S1 Table A: Preferred Reporting Items for Systematic Reviews and Network Meta-Analyses checklist (pg. 2)

S1 Text A: Search terms (pg. 5)

S1 Table B: Remission and response definitions in primary studies (pg. 6)

S1 Fig. A: Flowchart of included and excluded studies (pg. 12)

S1 Table C: Studies general information (pg. 13)

S1 Table D: Studies demographic information (pg. 26)

S1 Table E: Intervention information (pg. 33)

S1 Table F: Outcomes assessment information (pg. 41)

S1 Table G: Multiple multilevel meta-regression model for placebo response on the aggregate measure of internalizing symptoms in adults (pg. 54)

S1 Table H: Multiple multilevel meta-regression model for placebo response on the aggregate measure of internalizing symptoms in adults and elderly (pg. 56)

S1 Table I: Multiple multilevel meta-regression model for placebo response on the aggregate measure of internalizing symptoms in elderly (pg. 58)

S1 Table J: Multiple multilevel meta-regression model for placebo response on the aggregate measure of internalizing symptoms in children and adolescents (pg. 59)

S1 Table K: Risk of bias in included studies (pg. 60)

S1 Fig. B: Risk of bias summary (pg. 65)

S1 Fig. C: Funnel plot for all internalizing symptoms (pg. 66)

S1 Table A: Preferred Reporting Items for Systematic Reviews and Network Meta-Analyses checklist

Section and Topic	Item #	Checklist item	Location where item is reported
TITLE			
Title	1	Identify the report as a systematic review.	Pg.1
ABSTRACT			
Abstract	2	See the PRISMA 2020 for Abstracts checklist.	Pg.3
INTRODUCTION			
Rationale	3	Describe the rationale for the review in the context of existing knowledge.	Pgs. 5, 6
Objectives	4	Provide an explicit statement of the objective(s) or question(s) the review addresses.	Pg. 7
METHODS			
Eligibility criteria	5	Specify the inclusion and exclusion criteria for the review and how studies were grouped for the syntheses.	Pg. 7
Information sources	6	Specify all databases, registers, websites, organisations, reference lists and other sources searched or consulted to identify studies. Specify the date when each source was last searched or consulted.	Pg. 8
Search strategy	7	Present the full search strategies for all databases, registers and websites, including any filters and limits used.	S1 Text A
Selection process	8	Specify the methods used to decide whether a study met the inclusion criteria of the review, including how many reviewers screened each record and each report retrieved, whether they worked independently, and if applicable, details of automation tools used in the process.	Pgs. 8, 9
Data collection process	9	Specify the methods used to collect data from reports, including how many reviewers collected data from each report, whether they worked independently, any processes for obtaining or confirming data from study investigators, and if applicable, details of automation tools used in the process.	Pg. 10
Data items	10a	List and define all outcomes for which data were sought. Specify whether all results that were compatible with each outcome domain in each study were sought (e.g. for all measures, time points, analyses), and if not, the methods used to decide which results to collect.	Pg. 9
	10b	List and define all other variables for which data were sought (e.g. participant and intervention characteristics, funding sources). Describe any assumptions made about any missing or unclear information.	Pg. 9
Study risk of bias assessment	11	Specify the methods used to assess risk of bias in the included studies, including details of the tool(s) used, how many reviewers assessed each study and whether they worked independently, and if applicable, details of automation tools used in the process.	Pg. 9
Effect measures	12	Specify for each outcome the effect measure(s) (e.g. risk ratio, mean difference) used in the synthesis or presentation of results.	Pg. 10
Synthesis methods	13a	Describe the processes used to decide which studies were eligible for each synthesis (e.g. tabulating the study intervention characteristics and comparing against the planned groups for each synthesis (item #5)).	Pg. 10
	13b	Describe any methods required to prepare the data for presentation or synthesis, such as handling of missing summary statistics, or data conversions.	Pg. 10
	13c	Describe any methods used to tabulate or visually display results of individual studies and syntheses.	Pg. 10
	13d	Describe any methods used to synthesize results and provide a rationale for the choice(s). If meta-analysis was performed, describe the model(s), method(s) to identify the presence and extent of statistical heterogeneity, and software package(s) used.	Pgs. 10, 11

Section and Topic	Item #	Checklist item	Location where item is reported
	13e	Describe any methods used to explore possible causes of heterogeneity among study results (e.g. subgroup analysis, meta-regression).	Pgs. 10, 11
	13f	Describe any sensitivity analyses conducted to assess robustness of the synthesized results.	Pgs. 10, 11
Reporting bias assessment	14	Describe any methods used to assess risk of bias due to missing results in a synthesis (arising from reporting biases).	Pg. 10
Certainty assessment	15	Describe any methods used to assess certainty (or confidence) in the body of evidence for an outcome.	Pg. 10
RESULTS			
Study selection	16a	Describe the results of the search and selection process, from the number of records identified in the search to the number of studies included in the review, ideally using a flow diagram.	S1 Fig. A
	16b	Cite studies that might appear to meet the inclusion criteria, but which were excluded, and explain why they were excluded.	Pg. 11
Study characteristics	17	Cite each included study and present its characteristics.	S1 Table C, D, E and F
Risk of bias in studies	18	Present assessments of risk of bias for each included study.	S1 Table K
Results of individual studies	19	For all outcomes, present, for each study: (a) summary statistics for each group (where appropriate) and (b) an effect estimate and its precision (e.g. confidence/credible interval), ideally using structured tables or plots.	Fig 1
Results of syntheses	20a	For each synthesis, briefly summarise the characteristics and risk of bias among contributing studies.	S1 Fig. B
	20b	Present results of all statistical syntheses conducted. If meta-analysis was done, present for each the summary estimate and its precision (e.g. confidence/credible interval) and measures of statistical heterogeneity. If comparing groups, describe the direction of the effect.	Tables 1-3
	20c	Present results of all investigations of possible causes of heterogeneity among study results.	Pg. 14
	20d	Present results of all sensitivity analyses conducted to assess the robustness of the synthesized results.	Tables 1-2
Reporting biases	21	Present assessments of risk of bias due to missing results (arising from reporting biases) for each synthesis assessed.	S1 Fig C
Certainty of evidence	22	Present assessments of certainty (or confidence) in the body of evidence for each outcome assessed.	Pg. 15
DISCUSSION			
Discussion	23a	Provide a general interpretation of the results in the context of other evidence.	Pg. 15
	23b	Discuss any limitations of the evidence included in the review.	Pgs. 18
	23c	Discuss any limitations of the review processes used.	Pg. 18-19
	23d	Discuss implications of the results for practice, policy, and future research.	Pg. 19
OTHER INFORMATION			
Registration and protocol	24a	Provide registration information for the review, including register name and registration number, or state that the review was not registered.	Pg. 7
	24b	Indicate where the review protocol can be accessed, or state that a protocol was not prepared.	Pg. 7
	24c	Describe and explain any amendments to information provided at registration or in the protocol.	Pg. 7

Section and Topic	Item #	Checklist item	Location where item is reported
Support	25	Describe sources of financial or non-financial support for the review, and the role of the funders or sponsors in the review.	Pg. 20
Competing interests	26	Declare any competing interests of review authors.	Pg. 20
Availability of data, code and other materials	27	Report which of the following are publicly available and where they can be found: template data collection forms; data extracted from included studies; data used for all analyses; analytic code; any other materials used in the review.	Pg. 20

S1 Text A: Search terms

(anxi* OR GAD OR phobi* OR "social anxiety" OR panic* OR obsessi* OR compulsi* OR traumatic* OR posttrauma* OR post-trauma* OR "post trauma*" OR "combat disorder*" OR "stress disorder*" OR OCD OR ptsd) AND ("selective serotonin reuptake" OR "selective serotonin re-uptake inhibitors" OR "serotonin-specific reuptake inhibitors" OR ssri OR fluoxetine OR fluvoxamine OR sertraline OR paroxetine OR citalopram OR escitalopram OR dapoxetine OR "serotonin-norepinephrine reuptake" OR SNRI* OR venlafaxine OR desvenlafaxine OR duloxetine OR milnacipran OR Levomilnacipran) AND ((randomized controlled trial[Publication Type] OR (randomized[Title/Abstract] OR randomised[Title/Abstract]) AND controlled[Title/Abstract] AND trial[Title/Abstract]) OR (meta-analysis OR metaanalysis OR "systematic review" OR metaanalyses OR meta-analyses OR "systematic-review"))

S1 Table B: Remission and response definitions in primary studies

id	Remission Definition	Placebo Remission (%)	Response Definition	Placebo Response (%)
JF10	Liebowitz social anxiety scale total score ≤ 30	13	CGI-I ≤ 2	36
JF11	NA	8,3	NA	NA
JF15	NA	NA	CGI-I very much improved (score=1) or much improved (score=2) compared with baseline	NA
JF16	NA	NA	CGI-I score of 1 or 2 (very much or much improved)	42
JF22	HAMA total score ≤ 7	33	$\geq 50\%$ reduction in HAMA total score	69
JF25	NA	NA	CGI ≤ 2	32,4
JF28	absence of full panic attacks during the 2-week period ending at week 10.	50	number of attacks was reduced at least 50%	NA
JF29	HAMA total score as a score ≤ 7 at endpoint	27,2	$\geq 50\%$ decrease in HAMA total score	52,1
JF3	HAM-A total score of ≤ 7	29,5	50% reduction from baseline in the HAM-A total score	45,5
JF34	NA	NA	CGI-I ≤ 2	6,3
JF42	NA	NA	CGI-I ≤ 2	35
JF56	CGI-I=1 and panic-free	25,4	CGI ≤ 2	55,4
JF59	NA	NA	CGI ≥ 2 and .30% reduction from baseline in CAPS-2	32
JF61	NA	NA	$\geq 50\%$ reduction in HAM-A at end point	48,2
JF7	Hamilton Anxiety scale ≤ 7	18	CGI ≤ 2	37
JF72	NA	NA	CGI ≤ 2	11
JF78	NA	NA	Duke Global Rating Scale ≤ 2	62
JF80	HAM-A total score ≤ 8 at last two visits	14	$\geq 50\%$ reduction in HAM-A at end point	42
JF82	CGI-I=1	44,4	CGI-I ≤ 2	77,7
JF83	NA	NA	$\geq 50\%$ reduction in HAM-A psychic score e somatic score	35,5
JF87	NA	NA	$\geq 50\%$ reduction in HAM-A	36

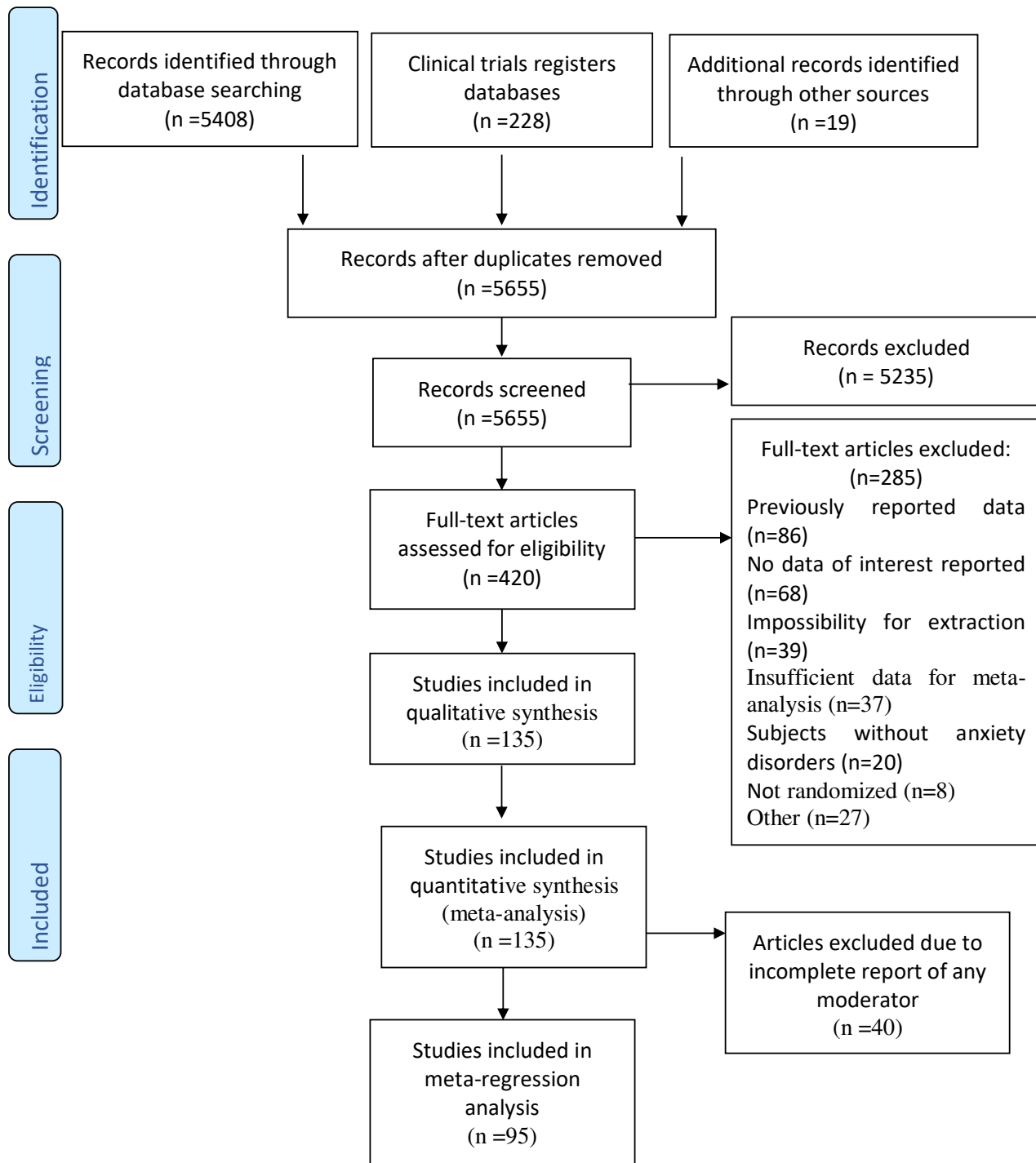
JF88	HAM-A ≤ 7	16	CGI-I ≤ 2	41
JF89	NA	NA	CGI-I ≤ 2	16,7
JF9	HAMA ≤ 7 at endpoint	19	$\geq 50\%$ reduction from baseline in HAMA total score at endpoint	31
JF94	NA	NA	CGI?	37,80
LM34	NA	NA	CGI Improvement score of 1 or 2	41,5
LM37	NA	NA	CGI Improvement score of 1 or 2	42
LM39	NA	NA	40% or greater decrease in CY-BOCS	25
LM4	CAPS-SX ≤ 20	37,5	decrease in CAPS-X $\geq 30\%$ at 12 weeks	63,8
LM40	NA	NA	CGI Improvement score of 1 or 2	33,3
LM48	NA	NA	CGI score of 1 or 2	9
LM5	NA	NA	CGI Improvement score of 1 or 2	31,7
LM50	NA	NA	CGI score of 1 or 2	30
LM54	HAMA total score ≤ 7 at endpoint	19	CGI score of 1 or 2	41,8
LM57	NA	NA	Duke Global Rating for PTSD score 1 or 2	33
LM59	patient free of panic attack	22	NA	NA
LM6	NA	NA	30% or greater decrease in the CAPS-2 scores and a CGI-I rating of 1 or 2	NA
LM60	Y-BOCS total ≤ 08 at endpoint	8	CGI-I score of 1 or 2	21
LM71	NA	NA	$\geq 25\%$ reduction in Y-BOCS	NA
LM72	NA	NA	HAM-A responder criteria ($\geq 50\%$ reduction from baseline)	NA
LM73	NA	NA	CGI score of 1 or 2	39
LM74	HAM < 10 points	29,6	HAM-A responder criteria ($\geq 50\%$ reduction from baseline)	37,8
LM86	NA	NA	CGI score improvement of 1, 2 or 3	66,7
LM95	NA	NA	$\geq 30\%$ reduction IES-R	6
MC1	NA	NA	CGI-I (Improvement) score was 1 (very much improvement) or 2 (much improvement).	NA

MC10	SDS total score < 5	15	NA	NA
MC12	0 full-symptoms panic attacks in the PAAS and CGI-I score of 1 or 2 at week 10	29,4	CGI-I = 1 or 2	58,8
MC13	NA	NA	CGI-I = 1 or 2 in week 12	31,9
MC14	LSAS score \leq 30 and CGI-I score of 1	7	CGI score of 1 or 2	30
MC15	NA	NA	CGI \leq 2	26
MC16	NA	NA	much or very much improved on the GCGI-I scale	57
MC17	NA	NA	Clinical Global Impression– Improvement score of 1 or 2	36,1
MC20a	% of patients reporting zero panic attacks	41	NA	NA
MC22	HAM-A total score of \leq 7	NA	\geq 50% decrease from baseline in HAM-A total score	42,2
MC25	NA	NA	week 16 CGI-I of 1 or 2	37
MC26	CY-BOCS score \leq 10	3,6	NA	NA
MC28	NA	NA	CGI-I = 1 or 2 at endpoint	26
MC3	HAM-A total score 7 by week 24	18,9	50% reduction in rating scale by week	48,4
MC31	NA	NA	(“very much improved” or “much improved”) for global improvement on the Clinical Global Impression scale	37
MC32	NA	NA	CGI-I score of 2 or 1	22,2
MC33	NA	NA	TOP-8 decrease >50%, CGI = 1 or 2, and patients no longer meeting DSM-IV PTSD criteria	37,5
MC34	NA	NA	50% decrease in TOP-8 score from baseline, CGI \leq 2 and absence of at least one of the core symptoms of PTSD based on CAPS.	32,4
MC38	HAM-A total score \leq 7	27,4	(\geq 50% decrease in the HAM-A total score from randomization)	46,2
MC39	completely panic-free at the last visit of the acute phase	15,3	NA	NA
MC4	Reduction in Hamilton anxiety score to 10 or less	17,64	50% reduction in Hamilton anxiety score or a CGI rating of 1 or 2	24
MC40	Free of full panic attack	28	%CGI-S = 1 or 2	37

MC42	NA	NA	fall of at least 25% in Y-BOCS-Total score and CGI rating of 'much improved' or 'very much improved'	26
MC44	NA	NA	CGI-I rated as "much improved" or "very much improved"	42
MC45	NA	NA	≥ 25% improvement in Y-BOCS total score compared to baseline	36,6
MC51	NA	NA	The percentage of patients free of panic attacks at week 8	47
MC55	HAMA total score f7 at endpoint	20	o50% reduction from baseline in HAMA total score at endpoint	42
MC56	Final Hamilton Rating Scale for Anxiety (HAM-A) total score r7	9,1	a CGI-score of 1 (very much improved) or 2 (much improved)	NA
MC6	NA	NA	Clinical Global Impressions-Improvement scale of 1 (very much improved) or 2 (much improved)	45
MC62	NA	NA	o30% reduction in the IES-R total score plus obtaining a score of 1 or 2 on the CGI-I scale	3
MC73	No full-symptom panic attacks on the PAAS and a CGI-S scale score of 1 or 2 ("not at all" or "borderline" ill)	26,8	CGI - a score of 1 (very much improved) or 2 (much improved)	59,9
MC77	HAMA≤7	22,7	CGI-I= 1 or 2	47,2
MC79	Zero full-symptom panic attacks on the PAAS and a CGI-S scale score of 1 or 2	23,7	CGI-I= 1 or 2	55,8
MC81	NA	NA	NA	NA
MC82	CGI=1 or 2	17	NA	NA
MJ1	NA	NA	CGI-I = 1 or 2	34
MJ14	Hamilton Anxiety Scale total score < or =7	23	> or = 50% reduction from baseline in HAM-A total score at endpoint	32
MJ16	NA	NA	NA	NA
MJ17	NA	NA	CGI-I= 1 or 2	NA
MJ2	Zero major panic attacks	60,7	HAM-A Moderate severity	46,4
MJ22	Percentage of patients who were free of full panic attacks for the 2 weeks prior to endpoint	52,7	CGI = 1 or 2	46

MJ25	Hamilton Anxiety Scale Total Score <or= 7	20	CGI-I = 1 or 2	45,6
MJ3	Zero panic attacks	38	NA	NA
MJ36	NA	NA	NA	NA
MJ4	Liebowitz Social Anxiety Scale < or = 30	16	CGI = 1 or 2	33
MJ42	CGI-S = 1 or 2	25	CGI-I < or = 2	39
MJ44	NA	NA	25% reduction from baseline in the CY-BOCS score	26
MJ5	NA	NA	CGI-I = 1 or 2	22,7
MJ53	NA	NA	CGI-I = 1 or 2	23,9
MJ54	CGI-S < or = 2	35	50% improvement on the PARS Severity for GAD	42
MJ56	No longer meeting meeting criteria for PTSD assessed by K-SADS-PL	46,6	CGI-I < or = 2	57,4
MJ64	Clinician Administered PTSD Scale Part 2 total score <20	16,5	CGI = 1 or 2	38
MJ66	NA	NA	CGI = 1 or 2	29
MJ70	Clinician-Administered PTSD Scale <20	10	NA	NA
MJ71	NA	NA	Reduction on the anxiety scale of the SAS of 50% or more at end point	7
MJ73	NA	NA	Physician's Global Improvement scale = 9 or 10	21
MJ77	CGI-I=1	14,9	CGI=1 or 2	38,3
MJ78	NA	NA	CGI=1 or 2	23,7
MJ80	NA	NA	CGI-I< 4	29
MJ84	NA	NA	CGI-I < or = 2	44
MJ89	Hamiton Anxiety Scale total score < or = 7	32	> or = 50% reduction from baseline to endpoint in the Hamilton Anxiety Scale - Anxiety subscale total score	53
MJ93	NA	NA	CGI = 1 or 2	20
MJ94	NA	NA	Reduction of 25% in the score of the Yale-Brown Obsessive-Compulsive Scale	35,4

MJ96	Hamilton Anxiety Rating Scale < or = 7	19,9	At least 50% decrease from baseline Hamilton Anxiety Rating Scale total score	36,6
UNG10	NA	NA	CGI-I less or equal to 2	42
UNG11	NA	NA	25% reduction of YBOCS	27
UNG12	NA	NA	25% reduction of YBOCS	42,7
UNG6	NA	NA	CGI-I less or equal to 2	49,7
UNG7	HAM-A less than 7	25,3	CGI-I less or equal to 2	51,9
UNG8	NA	NA	CGI-I less or equal to 2	54,54
UNG9	NA	NA	CGI-I less or equal to 2	NA
UPD3	LSAS \leq 30	3,4	CGI-I = 1 or 2	69
UPD8	NA	NA	CGI-I = 1 or 2	24

S1 Fig. A: Flowchart of included and excluded studies

S1Table C: Studies general information

id	PMID / Other ID	Author	Title	Pub. Status	Year of Publication	Funding
JF10	2004379131	Allgulander	Efficacy of venlafaxine ER in patients with social anxiety disorder: A double-blind, placebo-controlled, parallel-group comparison with paroxetine	published	2004	Industry
JF11	1999304629	Allgulander C.	Paroxetine in social anxiety disorder: A randomized placebo-controlled study	published	1999	Industry
JF15	2007092774	Asakura S.	Fluvoxamine treatment of generalized social anxiety disorder in Japan: A randomized double-blind, placebo-controlled study	published	2006	Industry
JF16	11472786	Asnis	Fluvoxamine in the treatment of panic disorder: a multi-center, double-blind, placebo-controlled study in outpatients.	published	2001	Industry
JF20	10665629	Bakker	Paroxetine, clomipramine, and cognitive therapy in the treatment of panic disorder.	published	1999	academic
JF22	2006434703	Baldwin	Escitalopram and paroxetine in the treatment of generalised anxiety disorder: Randomised, placebo-controlled, double-blind study	published	2006	Industry
JF25	1999268351	Baldwin D.	Paroxetine in social phobia/social anxiety disorder: Randomised, double-blind, placebo-controlled study	published	1999	Industry
JF28	1998025805	Ballenger	Double-blind, fixed-dose, placebo-controlled study of paroxetine in the treatment of panic disorder	published	1998	Industry
JF29	2010331033	Bandelow	Extended-release quetiapine fumarate (quetiapine XR): A once-daily monotherapy effective in generalized anxiety disorder. Data from a randomized, double-blind, placebo-and active-controlled study	published	2010	Industry
JF3	24644106	Alaka	Efficacy and safety of duloxetine in the treatment of older adult patients with generalized anxiety disorder: a randomized, double-blind, placebo-controlled trial.	published	2014	Industry

JF34	2007567996	Beidel D.C.	SET-C versus fluoxetine in the treatment of childhood social phobia	published	2007	Industry
JF42	12649628	Birmaher	Fluoxetine for the treatment of childhood anxiety disorders.	published	2003	governmental or non-profit
JF45	8422221	Black	A comparison of fluvoxamine, cognitive therapy, and placebo in the treatment of panic disorder.	published	1993	academic
JF56	2005461776	Bradwejn	Venlafaxine extended-release capsules in panic disorder: Flexible-dose, double-blind, placebo-controlled study	published	2005	academic
JF59	2000137979	Brady	Efficacy and safety of sertraline treatment of posttraumatic stress disorder: A randomized controlled trial	published	2000	unclear
JF61	2006335133	Brawman-Mintzer O.	Sertraline treatment for generalized anxiety disorder: A randomized, double-blind, placebo-controlled study	published	2006	Industry
JF7	2004388355	Allgulander	Efficacy of sertraline in a 12-week trial for generalized anxiety disorder	published	2004	Industry
JF72	2274626	Chouinard	Results of a double-blind placebo controlled trial of a new serotonin uptake inhibitor, sertraline, in the treatment of obsessive-compulsive disorder.	published	1990	Industry
JF78	1999231913	Connor K.M.	Fluoxetine in post-traumatic stress disorder. Randomised, double-blind study	published	1999	unclear
JF80	20455246	Coric	Multicenter, randomized, double-blind, active comparator and placebo-controlled trial of a corticotropin-releasing factor receptor-1 antagonist in generalized anxiety disorder.	published	2010	governmental or non-profit
JF82	2013806668	Da Costa	Comparison among clomipramine, fluoxetine, and placebo for the treatment of anxiety disorders in children and adolescents	published	2013	Industry
JF83	15877709	Dahl	Sertraline in generalized anxiety disorder: efficacy in treating the psychic and somatic anxiety factors.	published	2005	academic
JF87	1999307984	Davidson	Efficacy, safety, and tolerability of venlafaxine extended release and buspirone in outpatients with generalized anxiety disorder	published	1999	academic

JF88	2004332730	Davidson	Escitalopram in the treatment of generalized anxiety disorder: Double-blind, placebo controlled, flexible-dose study	published	2004	Industry
JF89	15206657	Davidson	Fluvoxamine-controlled release formulation for the treatment of generalized social anxiety disorder.	published	2004	Industry
JF9	17559726	Koponen	Efficacy of Duloxetine for the Treatment of Generalized Anxiety Disorder: Implications for Primary Care Physicians	published	2007	Industry
JF94	NA	Asakura S.	A randomized, double-blind, placebo-controlled study of escitalopram in patients with social anxiety disorder in Japan	published	2016	Industry
LM10	1697419	Den Boer	Serotonin function in panic disorder: a double blind placebo controlled study with fluvoxamine and ritanserin.	published	1990	Industry
LM23	2011102179	Fani N.	Increased neural response to trauma scripts in posttraumatic stress disorder following paroxetine treatment: A pilot study	published	2011	Industry
LM24	2009487779	Fani N.	Neuropsychological functioning in patients with posttraumatic stress disorder following short-term paroxetine treatment	published	2009	Industry
LM34	2007265412	Friedman M.J.	Randomized, double-blind comparison of sertraline and placebo for posttraumatic stress disorder in a department of veterans affairs setting	published	2007	Industry
LM37	2000217510	Gelenberg	Efficacy of venlafaxine extended-release capsules in nondepressed outpatients with generalized anxiety disorder a 6-month randomized controlled trial	published	2000	Industry
LM39	2001231890	Geller D.A.	Fluoxetine treatment for obsessive-compulsive disorder in children and adolescents: A placebo-controlled clinical trial	published	2001	Industry
LM4	2006486251	Davidson J.	Treatment of posttraumatic stress disorder with venlafaxine extended release: A 6-month randomized controlled trial	published	2006	Industry
LM40	2004455208	Geller D.A.	Paroxetine treatment in children and adolescents with obsessive-compulsive	published	2004	Industry

			disorder: A randomized, multicenter, double-blind, placebo-controlled trial			
LM42	2014038390	Gimenez M.	Functional effects of chronic paroxetine versus placebo on the fear, stress and anxiety brain circuit in Social Anxiety Disorder: Initial validation of an imaging protocol for drug discovery	published	2013	Industry
LM48	1996126650	Goodman W.K.	Treatment of obsessive-compulsive disorder with fluvoxamine: A multicentre, double-blind, placebo-controlled trial	published	1996	Industry
LM5	2004433622	Davidson J.R.T.	Fluoxetine, comprehensive cognitive behavioral therapy, and placebo in generalized social phobia	published	2004	governmental or non-profit
LM50	1995114731	Greist	Double-blind parallel comparison of three dosages of sertraline and placebo in outpatients with obsessive-compulsive disorder	published	1995	Industry
LM54	2007173305	Hartford	Duloxetine as an SNRI treatment for generalized anxiety disorder: Results from a placebo and active-controlled trial	published	2007	Industry
LM57	10907802	Hertzberg	Lack of efficacy for fluoxetine in PTSD: a placebo controlled trial in combat veterans.	published	2000	Industry
LM59	8227490	Hoehn-Saric	Effect of fluvoxamine on panic disorder.	published	1993	academic
LM6	2001168539	Davidson J.R.T.	Multicenter, double-blind comparison of sertraline and placebo in the treatment of posttraumatic stress disorder	published	2001	Industry
LM60	2003250843	Hollander	A double-blind, placebo-controlled study of the efficacy and safety of controlled-release fluvoxamine in patients with obsessive-compulsive disorder	published	2003	Industry
LM67	2143637	Jenike	A controlled trial of fluvoxamine in obsessive-compulsive disorder: implications for a serotonergic theory.	published	1990	academic
LM69	1997265747	Jenike M.A.	Placebo-controlled trial of fluoxetine and phenelzine for obsessive-compulsive disorder	published	1997	governmental or non-profit

LM71	2004359161	Kamijima K.	Paroxetine in the treatment of obsessive-compulsive disorder: Randomized, double-blind, placebo-controlled study in Japanese patients	published	2004	academic
LM72	2009168154	Kasper	Efficacy of pregabalin and venlafaxine-XR in generalized anxiety disorder: Results of a double-blind, placebo-controlled 8-week trial	published	2009	Industry
LM73	2005116331	Kasper	Escitalopram in the treatment of social anxiety disorder: Randomised, placebo-controlled, flexible-dosage study	published	2005	Industry
LM74	2014307110	Kasper S.	Lavender oil preparation Silexan is effective in generalized anxiety disorder - A randomized, double-blind comparison to placebo and paroxetine	published	2014	academic
LM76	1995265890	Katzelnick D.J.	Sertraline for social phobia: A double-blind, placebo-controlled crossover study	published	1995	Industry
LM86	20462466	Koszycki	A randomized trial of sertraline, self-administered cognitive behavior therapy, and their combination for panic disorder.	published	2011	Industry
LM95	28266242	Li	Effect and safety of sertraline for treat posttraumatic stress disorder: a multicenter randomised controlled study	published	2017	academic
MC1	16175565	Ledley	Impact of depressive symptoms on the treatment of generalized social anxiety disorder.	published	2005	governmental or non-profit
MC10	15003077	Lepola	Controlled-release paroxetine in the treatment of patients with social anxiety disorder.	published	2004	Industry
MC12	2009266799	Liebowitz	A double-blind, placebo-controlled, parallel-group, flexible-dose study of venlafaxine extended release capsules in adult outpatients with panic disorder	published	2009	Industry
MC13	2002049438	Liebowitz	A randomized, double-blind, fixed-dose comparison of paroxetine and placebo in the treatment of generalized social anxiety disorder	published	2002	Industry
MC14	2005105216	Liebowitz	A randomized controlled trial of venlafaxine extended release in generalized social anxiety disorder	published	2005	Industry

MC15	2003299727	Liebowitz	Efficacy of sertraline in severe generalized social anxiety disorder: Results of a double-blind, placebo-controlled study	published	2003	Industry
MC16	12447029	Liebowitz	Fluoxetine in children and adolescents with OCD: a placebo-controlled trial.	published	2002	Industry
MC17	2005062649	Liebowitz M.R.	Venlafaxine extended release vs placebo and paroxetine in social anxiety disorder	published	2005	Industry
MC2	2000096828	Leinonen	Citalopram controls phobic symptoms in patients with panic disorder: Randomized controlled trial	published	2000	academic
MC20a	1998228027	Londborg P.D.	Sertraline in the treatment of panic disorder. A multi-site, double-blind, placebo-controlled, fixed-dose investigation	published	1998	Industry
MC20b	1998228027	Londborg P.D.	Sertraline in the treatment of panic disorder. A multi-site, double-blind, placebo-controlled, fixed-dose investigation	published	1998	Industry
MC22	2013802284	Mahableshwarkar	A randomised, double-blind, placebo-controlled, duloxetine-referenced study of the efficacy and tolerability of vortioxetine in the acute treatment of adults with generalised anxiety disorder	published	2013	Industry
MC25	2007528912	March	A Randomized Controlled Trial of Venlafaxine ER Versus Placebo in Pediatric Social Anxiety Disorder	published	2007	Industry
MC26	2004455374	March	Cognitive-behavior therapy, sertraline, and their combination for children and adolescents with obsessive-compulsive disorder: The pediatric OCD treatment study (POTS) randomized controlled trial	published	2004	governmental or non-profit
MC28	1998400055	March J.S.	Sertraline in children and adolescents with obsessive-compulsive disorder: A multicenter randomized controlled trial	published	1998	Industry
MC3	2003412218	Lenox-Smith	A double-blind, randomised, placebo controlled study of venlafaxine XL in patients with generalised anxiety disorder in primary care	published	2003	Industry

MC31	2001420732	Marshall	Efficacy and safety of paroxetine treatment for chronic PTSD: A fixed-dose, placebo-controlled study	published	2001	Industry
MC32	2007163092	Marshall	A controlled trial of paroxetine for chronic PTSD, dissociation, and interpersonal problems in mostly minority adults	published	2007	unclear
MC33	17414240	Martenyi	Failed efficacy of fluoxetine in the treatment of posttraumatic stress disorder: results of a fixed-dose, placebo-controlled study.	published	2007	Industry
MC34	2006287406	Martenyi	Fluoxetine in the acute treatment and relapse prevention of combat-related post-traumatic stress disorder: Analysis of the veteran group of a placebo-controlled, randomized clinical trial	published	2006	unclear
MC38	2011677266	Merideth	Efficacy and tolerability of extended release quetiapine fumarate monotherapy in the acute treatment of generalized anxiety disorder: A randomized, placebo controlled and active-controlled study	published	2011	Industry
MC39	9812120	Michelson	Outcome assessment and clinical improvement in panic disorder: evidence from a randomized controlled trial of fluoxetine and placebo. The Fluoxetine Panic Disorder Study Group.	published	1998	Industry
MC4	2005031032	Lenze	Efficacy and tolerability of citalopram in the treatment of late-life anxiety disorders: Results from an 8-week randomized, placebo-controlled trial	published	2005	academic
MC40	2002013536	Michelson D.	Efficacy of usual antidepressant dosing regimens of fluoxetine in panic disorder. Randomised, placebo-controlled trial	published	2001	Industry
MC42	1994091030	Montgomery	A double-blind, placebo-controlled study of fluoxetine in patients with DSM-III-R obsessive-compulsive disorder	published	1993	unclear
MC44	2006302530	Montgomery	Efficacy and safety of pregabalin in the treatment of generalized anxiety disorder: A 6-week, multicenter, randomized, double-blind, placebo-controlled comparison of pregabalin and venlafaxine	published	2006	Industry

MC45	2001077435	Montgomery	Citalopram 20 mg, 40 mg and 60 mg are all effective and well tolerated compared with placebo in obsessive-compulsive disorder	published	2001	Industry
MC51	9160622	Nair	Comparison of fluvoxamine, imipramine, and placebo in the treatment of outpatients with panic disorder.	published	1996	Industry
MC55	18485261	Nicolini	Improvement of psychic and somatic symptoms in adult patients with generalized anxiety disorder: examination from a duloxetine, venlafaxine extended-release and placebo-controlled trial.	published	2008	unclear
MC56	2004493169	Nimatoudis I.	Remission rates with venlafaxine extended release in Greek outpatients with generalized anxiety disorder. A double-blind, randomized, placebo	published	2004	unclear
MC6	2009047569	Lenze	Escitalopram for older adults with generalized anxiety disorder: A randomized controlled trial	published	2009	governmental or non-profit
MC62	21349225	Panahi	A randomized, double-blind, placebo-controlled trial on the efficacy and tolerability of sertraline in Iranian veterans with post-traumatic stress disorder.	published	2011	academic
MC73	2007466592	Pollack	A randomized controlled trial of venlafaxine ER and paroxetine in the treatment of outpatients with panic disorder	published	2007	Industry
MC77	11411817	Pollack	Paroxetine in the treatment of generalized anxiety disorder: results of a placebo-controlled, flexible-dosage trial.	published	2001	Industry
MC79	2007096532	Pollack	A double-blind study of the efficacy of venlafaxine extended-release, paroxetine, and placebo in the treatment of panic disorder	published	2006	Industry
MC81	1997005505	Pollack	Venlafaxine for panic disorder: Results from a double-blind, placebo- controlled study	published	1996	unclear
MC82	1998374883	Pollack M.H.	Sertraline in the treatment of panic disorder: A flexible-dose multicenter trial	published	1998	Industry
MJ1	2004408566	Rickels	A double-blind, placebo-controlled study of a flexible dose of venlafaxine ER in adult	published	2004	unclear

			outpatients with generalized social anxiety disorder			
MJ14	2008171568	Rynn	Efficacy and safety of duloxetine in the treatment of generalized anxiety disorder: A flexible-dose, progressive-titration, placebo-controlled trial	published	2007	Industry
MJ16	2001420736	Rynn M.A.	Placebo-controlled trial of sertraline in the treatment of children with generalized anxiety disorder	published	2001	governmental or non-profit
MJ17	1998292538	Sandmann J.	Fluvoxamine or placebo in the treatment of panic disorder and relationship to blood concentrations of fluvoxamine	published	1998	academic
MJ2	2000222191	Rickels	Efficacy of extended-release Venlafaxine in nondepressed outpatients with generalized anxiety disorder	published	2000	Industry
MJ22	1996223201	Sharp D.M.	Fluvoxamine, placebo, and cognitive behaviour therapy used alone and in combination in the treatment of panic disorder and agoraphobia	published	1996	Industry
MJ25	15669886	Sheehan	Efficacy and tolerability of controlled-release paroxetine in the treatment of panic disorder.	published	2005	Industry
MJ3	2005347556	Rickels K.	Paroxetine treatment of generalized anxiety disorder: A double-blind, placebo-controlled study	published	2003	Industry
MJ36	2003496184	Stahl	Escitalopram in the Treatment of Panic Disorder: A Randomized, Double-Blind, Placebo-Controlled Trial	published	2003	Industry
MJ4	1429406	Riddle	Double-blind, crossover trial of fluoxetine and placebo in children and adolescents with obsessive-compulsive disorder.	published	1992	governmental or non-profit
MJ42	2005044275	Stein	Efficacy of low and higher dose extended-release venlafaxine in generalized social anxiety disorder: A 6-month randomized controlled trial	published	2004	Industry
MJ44	2007198511	Stein	Escitalopram in obsessive-compulsive disorder: A randomized, placebo-controlled, paroxetine-referenced, fixed-dose, 24-week study	published	2007	Industry

MJ5	2001046511	Riddle M.A.	Fluvoxamine for children and adolescents with obsessive-compulsive disorder: A randomized, controlled, multicenter trial	published	2001	Industry
MJ53	1999166603	Stein M.B.	Fluvoxamine treatment of social phobia (social anxiety disorder): A double-blind, placebo-controlled study	published	1999	Industry
MJ54	1998297625	Stein M.B.	Paroxetine treatment of generalized social phobia (social anxiety disorder): A randomized controlled trial	published	1998	Industry
MJ56	2015802599	Strawn	A randomized, placebo-controlled study of duloxetine for the treatment of children and adolescents with generalized anxiety disorder	published	2015	Industry
MJ6	2011001857	Robb A.S.	Sertraline treatment of children and adolescents with posttraumatic stress disorder: A double-blind, placebo-controlled trial	published	2010	Industry
MJ64	14608246	Tucker	Can physiologic assessment and side effects tease out differences in PTSD trials? A double-blind comparison of citalopram, sertraline, and placebo.	published	2003	Industry
MJ66	2001431494	Tucker P.	Paroxetine in the treatment of chronic posttraumatic stress disorder: Results of a placebo-controlled, flexible-dosage trial	published	2001	unclear
MJ70	2001050465	Van Ameringen M.A.	Sertraline treatment of generalized social phobia: A 20-week, double-blind, placebo-controlled study	published	2001	Industry
MJ71	2007077920	Van Der Kolk	A Randomized clinical trial of eye movement desensitization and reprocessing (EMDR), fluoxetine, and pill placebo in the treatment of posttraumatic stress disorder: treatment effects and long-term maintenance	published	2007	Industry
MJ73	1994203727	Van Vliet I.M.	Psychopharmacological treatment of social phobia; a double blind placebo controlled study with fluvoxamine	published	1993	governmental or non-profit
MJ77	9330022	Wade	The effect of citalopram in panic disorder.	published	1997	unclear

MJ78	2004471921	Wagner	A multicenter, randomized, double-blind, placebo-controlled trial of paroxetine in children and adolescents with social anxiety disorder	published	2004	unclear
MJ79	18974308	Walkup	Cognitive behavioral therapy, sertraline, or a combination in childhood anxiety.	published	2008	Industry
MJ80	11323729	Pine	Fluvoxamine for the treatment of anxiety disorders in children and adolescents. The Research Unit on Pediatric Psychopharmacology Anxiety Study Group.	published	2001	governmental or non-profit
MJ84	2004049533	Westenberg	A Double-Blind Placebo-Controlled Study of Controlled Release Fluvoxamine for the Treatment of Generalized Social Anxiety Disorder	published	2004	Industry
MJ85	2528158	Westenberg	Selective monoamine uptake inhibitors and a serotonin antagonist in the treatment of panic disorder.	published	1989	Industry
MJ89	2011586428	Wu	Duloxetine versus placebo in the treatment of patients with generalized anxiety disorder in China	published	2011	academic
MJ93	2002132412	Zohar	Double-blind placebo-controlled pilot study of sertraline in military veterans with posttraumatic stress disorder	published	2002	Industry
MJ94	1996302206	Zohar	Paroxetine versus clomipramine in the treatment of obsessive-compulsive disorder	published	1996	Industry
MJ96	2192564	Jenike	Sertraline in Obsessive-Compulsive Disorder: A double-Blind Comparison With Placebo	published	1990	Industry
MJ97	2192564	Jenike	Sertraline in Obsessive-Compulsive Disorder: A double-Blind Comparison With Placebo	published	1990	Industry
UNG9	NKF100110	Unknown	A Randomized, Double-Blind, Parallel-Group, Placebo-Controlled, Forced-Dose Titration Study Evaluating the Efficacy and Safety of a New Chemical Entity (NCE) and Paroxetine in Subjects with Social Anxiety Disorder.	unpublished	unpublished	Industry

UNG1	SCT-MD-05	Unknown	Escitalopram in the treatment of generalized anxiety disorder: Double-blind, placebo controlled, flexible-dose study	unpublished	unpublished	Industry
UNG10	NKP102280	Unknown	A double-blind, double dummy, placebo-controlled, randomised, parallel group positron emission tomography (PET) study to investigate the effects of a 8 week administration of a new compound and Paroxetine in combination or Paroxetine alone (7.5 mg) on regional cerebral blood flow (rCBF) during a Public Speaking test in subjects affected by social anxiety disorder (SAD).	unpublished	unpublished	Industry
UNG11	BRL-029060/CPMS-116	Unknown	Paroxetine versus Placebo in the Treatment of Obsessive-Compulsive Disorder	unpublished	unpublished	Industry
UNG12	MY- 1028/BRL-029060/1/CPMS-118	Unknown	Paroxetine versus Clomipramine and Placebo in the Treatment of Obsessive-Compulsive Disorder	unpublished	unpublished	Industry
UNG17	NKP103401	Unknown	A randomized, double-blind, parallel group, placebo-controlled fixed dose study comparing the efficacy and safety of New Chemical Entity (NCE)/Paroxetine combination of Paroxetine monotherapy to placebo in subjects with Social Anxiety Disorder (SAD)	unpublished	unpublished	Industry
UNG2	SCT-MD-06	Unknown	Flexible-dose comparison of the safety and efficacy of Escitalopram and placebo in the treatment of generalized anxiety disorder	unpublished	unpublished	Industry

UNG3	NCT01933919	Unknown	A phase 3 study of fluvoxamine (SME3110) in pediatric/adolescent patients with obsessive compulsive disorder	unpublished	unpublished	Industry
UNG6	GSK 637	Hewett	A double-blind, placebo controlled study to evaluate the efficacy and tolerability of paroxetine in patients with generalized anxiety disorder (GAD)	unpublished	unpublished	Industry
UNG7	GSK 791	Unknown	A randomized, double-blind, placebo-controlled, flexible dosage trial to evaluate the efficacy and tolerability of Paroxetine CR in patients with generalized anxiety disorder (GAD)	unpublished	unpublished	Industry
UNG8	Sonne draft	Sonne	The effect of Paroxetine in the treatment of comorbid PTSD and substance dependence	unpublished	unpublished	Industry
UPD3	10.4172/2167-1044.S1-014	Liebowitz MR	A 12-Week Double-Blind, Placebo-Controlled, Flexible-Dose Trial of Desvenlafaxine Extended-Release Tablets in Generalized Social Anxiety Disorder	published	2015	Industry
UPD8	32857933	Strawn JR	Escitalopram in Adolescents With Generalized Anxiety Disorder: A Double-Blind, Randomized, Placebo-Controlled Study	published	2015	governmental or non-profit

S1Table D: Studies demographic information

id	Country	Number of Sites	Population	Sampling	Main Disorder	n Placebo Arm (Baseline)	n Drug(s) Arm(s) (Baseline)	Number of Drug(s) Arms
JF10	Unclear	Several	Adults/Elderly	Outpatients	SAD	132	257	2
JF11	Sweden	1	Adults/Elderly	Outpatients	SAD	48	44	1
JF15	Japan	54	Adults/Elderly	Unclear	SAD	89	176	1
JF16	USA	1	Adults/Elderly	Unclear	Panic	95	93	1
JF20	Netherlands	2	Adults/Elderly	Outpatients	Panic	39	38	1
JF22	Several	63	Adults/Elderly	Outpatients	GAD	139	407	3
JF25	Several	39	Adults/Elderly	Community	SAD	151	139	1
JF28	USA and Canada	20	Adults/Elderly	Unclear	Panic	69	209	3
JF29	Several	112	Adults/Elderly	Outpatients	GAD	217	217	1
JF3	Several	47	Adults/Elderly	Outpatients	GAD	140	151	1
JF34	USA	2	Children/Adolescents	Community	SAD	32	33	1
JF42	Unclear	Unclear	Children/Adolescents	Mixed	More than 1 AnxDis	37	37	1
JF45	Unclear	Several	Adults/Elderly	Community	Panic	25	25	1
JF56	Several	50	Adults/Elderly	Outpatients	Panic	180	181	1
JF59	Unclear	14	Adults/Elderly	Outpatients	PTSD	93	94	1
JF61	USA	9	Adults/Elderly	Outpatients	GAD	170	68	1
JF7	Several	21	Adults/Elderly	Outpatients	GAD	190	188	1
JF72	Unclear	6	Adults/Elderly	Unclear	OCD	44	43	1
JF78	Unclear	Unclear	Adults/Elderly	Community	PTSD	27	27	1
JF80	USA	50	Adults/Elderly	Outpatients	GAD	104	53	1
JF82	Brazil	1	Children/Adolescents	Unclear	More than 1 AnxDis	11	10	1

JF83	Several	21	Adults/Elderly	Outpatients	GAD	189	184	1
JF87	USA	17	Adults/Elderly	Outpatients	GAD	98	174	2
JF88	USA	NA	Adults/Elderly	Outpatients	GAD	157	158	1
JF89	USA	23	Adults/Elderly	Mixed	GAD	140	139	1
JF9	Several	42	Adults/Elderly	Outpatients	GAD	175	338	2
JF94	Japan	86	Adults/Elderly	Outpatients	SAD	196	392	2
LM10	Netherlands	1	Adults/Elderly	Outpatients	Panic	19	20	1
LM23	US	1	Adults/Elderly	Outpatients	PTSD	6	7	1
LM24	US	1	Adults/Elderly	Outpatients	PTSD	10	8	1
LM34	USA	10	Adults/Elderly	Outpatients	PTSD	83	86	1
LM37	USA	14	Adults/Elderly	Outpatients	GAD	127	124	1
LM39	USA	21	Children/Adolescents	Unclear	OCD	32	69	1
LM4	Several	56	Adults/Elderly	Outpatients	PTSD	168	161	1
LM40	Several	36	Children/Adolescents	Outpatients	OCD	105	98	1
LM42	Spain	1	Adults/Elderly	Outpatients	SAD	16	17	1
LM48	USA	4	Adults/Elderly	Outpatients	OCD	78	78	1
LM5	USA	2	Adults/Elderly	Outpatients	SAD	60	57	1
LM50	USA	11	Adults/Elderly	Outpatients	OCD	84	241	3
LM54	USA	42	Adults/Elderly	Outpatients	GAD	161	326	2
LM57	USA	1	Adults/Elderly	Outpatients	PTSD	6	6	1
LM59	USA	NA	Adults/Elderly	Community	Panic	36	18	1
LM6	USA	12	Adults/Elderly	Outpatients	PTSD	108	100	1
LM60	USA	several	Adults/Elderly	Unclear	OCD	126	127	1
LM67	USA	NA	Adults/Elderly	Outpatients	OCD	20	18	1
LM69	USA	NA	Adults/Elderly	Outpatients	OCD	21	23	1

LM71	Japan	56	Adults/Elderly	Outpatients	OCD	94	94	1
LM72	Several	47	Adults/Elderly	Mixed	GAD	128	125	1
LM73	Several	41	Adults/Elderly	Outpatients	SAD	177	181	1
LM74	Germany	57	Adults/Elderly	Outpatients	GAD	136	137	1
LM76	USA	1	Adults/Elderly	Outpatients	SAD	6	6	1
LM86	Canada	15	Adults/Elderly	Outpatients	Panic	62	62	1
LM95	China	1	Adults/Elderly	Outpatients	PTSD	36	36	1
MC1	USA	2	Adults/Elderly	Unclear	SAD	55	54	1
MC10	Several	NA	Adults/Elderly	Outpatients	SAD	184	186	1
MC12	Several	56	Adults/Elderly	Outpatients	Panic	168	175	1
MC13	Several	22	Adults/Elderly	Outpatients	SAD	94	289	3
MC14	Several	19	Adults/Elderly	Mixed	SAD	138	133	1
MC15	USA	20	Adults/Elderly	Outpatients	SAD	204	211	1
MC16	USA	2	Children/Adolescents	Unclear	OCD	22	21	1
MC17	USA	26	Adults/Elderly	Outpatients	SAD	144	269	2
MC2	Several	22	Adults/Elderly	Unclear	Panic	64	192	2
MC20a	USA	7	Adults/Elderly	Outpatients	Panic	44	127	1
MC20b	USA	7	Adults/Elderly	Outpatients	Panic	43	127	3
MC22	USA	72	Adults/Elderly	Unclear	GAD	52	156	1
MC25	USA	48	Children/Adolescents	Outpatients	SAD	148	137	1
MC26	USA	3	Children/Adolescents	Outpatients	OCD	28	28	1
MC28	USA	12	Children/Adolescents	Outpatients	OCD	95	92	1
MC3	UK	31	Adults/Elderly	Community	GAD	122	122	1

MC31	USA	59	Adults/Elderly	Outpatients	PTSD	186	365	2
MC32	USA	NA	Adults/Elderly	Unclear	PTSD	27	25	1
MC33	USA	43	Adults/Elderly	Unclear	PTSD	88	323	2
MC34	Several	8	Adults/Elderly	Unclear	PTSD	34	110	1
MC38	USA	64	Adults/Elderly	Unclear	GAD	212	203	1
MC39	Unclear	Several	Adults/Elderly	Unclear	Panic	78	165	2
MC4	USA	1	Adults/Elderly	Mixed	More than 1 AnxDis	17	17	1
MC40	Several	9	Adults/Elderly	Outpatients	Panic	90	90	1
MC42	Several	13	Adults/Elderly	Unclear	OCD	55	158	3
MC44	Several	76	Adults/Elderly	Outpatients	GAD	101	113	1
MC45	Several	53	Adults/Elderly	Unclear	OCD	100	390	3
MC51	Canada	3	Adults/Elderly	Outpatients	Panic	47	43	1
MC55	Several	33	Adults/Elderly	Outpatients	GAD	169	411	3
MC56	Greece	4	Adults/Elderly	Outpatients	GAD	22	24	1
MC6	USA	1	Adults/Elderly	Mixed	GAD	93	86	1
MC62	Iran	1	Adults/Elderly	Outpatients	PTSD	35	35	1
MC73	Several	39	Adults/Elderly	Outpatients	Panic	157	467	3
MC77	Several	35	Adults/Elderly	Outpatients	GAD	163	161	1
MC79	Several	71	Adults/Elderly	Outpatients	Panic	156	478	3
MC81	USA	1	Adults/Elderly	Outpatients	Panic	12	13	1
MC82	USA	10	Adults/Elderly	Outpatients	Panic	88	88	1
MJ1	Unclear	17	Adults/Elderly	Outpatients	SAD	135	126	1
MJ14	USA	27	Adults/Elderly	Outpatients	GAD	159	168	1
MJ16	USA	1	Children/Adolescents	Outpatients	GAD	11	11	1
MJ17	Germany	2	Adults/Elderly	Outpatients	Panic	23	23	1

MJ2	USA	15	Adults/Elderly	Outpatients	GAD	96	253	3
MJ22	Scotland	NA	Adults/Elderly	Outpatients	Panic	37	36	1
MJ25	United States, Canada	Several	Adults/Elderly	Unclear	Panic	445	444	1
MJ3	USA, Canada	50	Adults/Elderly	Outpatients	GAD	180	386	2
MJ36	USA	Several	Adults/Elderly	Outpatients	Panic	119	247	2
MJ4	USA	1	Children/Adolescents	Outpatients	OCD	7	7	1
MJ42	USA	19	Adults/Elderly	Outpatients	SAD	134	261	2
MJ44	Canada, Finland, France, Germany, South Africa, Sweden	58	Adults/Elderly	Outpatients	OCD	115	351	3
MJ5	USA	17	Children/Adolescents	Outpatients	OCD	63	57	1
MJ53	USA	4	Adults/Elderly	Outpatients	SAD	44	48	1
MJ54	USA, Canada	13	Adults/Elderly	Outpatients	SAD	93	94	1
MJ56	USA, Mexico, South Africa	32	Children/Adolescents	Outpatients	GAD	137	135	1
MJ6	USA	21	Children/Adolescents	Outpatients	PTSD	62	67	1
MJ64	USA	1	Adults/Elderly	Outpatients	PTSD	10	48	2
MJ66	USA, Canada	37	Adults/Elderly	Outpatients	PTSD	156	151	1
MJ70	Canada	10	Adults/Elderly	Outpatients	SAD	69	135	1
MJ71	USA	NA	Adults/Elderly	Community	PTSD	29	30	1
MJ73	Netherlands	1	Adults/Elderly	Outpatients	SAD	13	15	1
MJ77	Finland, Sweden, Netherlands, UK	22	Adults/Elderly	Outpatients	Panic	96	281	3

MJ78	USA, South Africa Canda, Belgium	38	Children/Adolescents	Outpatients	SAD	157	165	1
MJ79	USA	6	Children/Adolescents	Outpatients	More than 1 AnxDis	76	133	1
MJ80	USA	5	children/Adolescents	Outpatients	more than 1 AnxDis	65	63	1
MJ84	France, Germany, UK, Ireland, Netherlands, South Africa, USA	42	Adults/Elderly	Outpatients	SAD	151	149	1
MJ85	Netherlands	NA	adults/Elderly	Outpatients	Panic	20	20	1
MJ89	China	9	Adults/Elderly	Outpatients	GAD	102	108	1
MJ93	Israel	3	Adults/Elderly	Outpatients	PTSD	19	23	1
MJ94	Several	Several	Adults/Elderly	Outpatients	OCD	99	201	1
MJ96	USA	NA	Adults/Elderly	Outpatients	OCD	9	10	1
MJ97	USA	NA	Adults/Elderly	Outpatients	OCD	9	10	1
UNG09	Several	27	Adults/Elderly	Outpatients	SAD	71	36	1
UNG1	USA	25	Adults/Elderly	Outpatients	GAD	128	124	1
UNG10	Sweden	1	Adults/Elderly	Outpatients	SAD	12	12	1
UNG11	USA	15	Adults/Elderly	Outpatients	OCD	88	260	3
UNG12	USA	13	Adults/Elderly	Outpatients	OCD	77	82	1
UNG17	Several	16	Adults/Elderly	Outpatients	SAD	62	66	1
UNG2	USA	19	Adults/Elderly	Outpatients	GAD	138	143	1
UNG3	Japan	34	Children/Adolescents	Unclear	OCD	18	19	1
UNG6	Several	50	Adults/Elderly	Outpatients	GAD	183	181	1
UNG7	USA	32	Adults/Elderly	Unclear	GAD	163	164	1
UNG8	USA	1	Adults/Elderly	Outpatients	PTSD	11	11	1
UPD3	USA	1	Adults/Elderly	Outpatients	SAD	30	30	1

UPD8	USA	1	Children/Adolescents	Outpatients	GAD	25	26	1
-------------	-----	---	----------------------	-------------	-----	----	----	---

S1Table E: Intervention information

id	Drug(s) mean dose or min. to max. dose	Drug(s) Class	Comparator	Number of Visits	Outcome Week	Concomitant use of Benzodiazepines	Placebo (led in) exclusion
JF10	venlafaxine - 192mg paroxetine - 44mg	SNRI,SSRI	placebo	9	12-14 week	not informed	no
JF11	paroxetine - 20 to 50mg	SSRI	placebo	7	12-14 week	no	no
JF15	fluvoxamine - 180mg	SSRI	placebo	9	9-11 week	yes	not informed
JF16	fluvoxamine - 100 to 300mg	SSRI	placebo	9	6-8 week	yes	yes
JF20	paroxetine - 20 to 60mg	SSRI	placebo	not informed	12-14 week	no	yes
JF22	escitalopram - 5mg escitalopram - 20mg paroxetine - 20mg	SSRI	head-to-head	10	12-14 week	no	yes
JF25	paroxetine - 35mg	SSRI	placebo	8	12-14 week	no	yes
JF28	paroxetine - 10mg paroxetine - 20mg paroxetine - 40mg	SSRI	different dose	8	9-11 week	yes	yes
JF29	paroxetine - 20mg	SSRI	placebo	9	6-8 week	no	not informed
JF3	duloxetine - 30 to 120mg	SNRI	placebo	5	9-11 week	no	no
JF34	fluoxetine - 10 to 40mg	SSRI	placebo	13	12-14 week	not informed	not informed
JF42	fluoxetine - 20mg	SSRI	placebo	13	12-14 week	not informed	not informed
JF45	fluvoxamine - 50 to 300mg	SSRI	placebo	not informed	6-8 week	not informed	yes
JF56	venlafaxine - 163mg	SNRI	placebo	9	9-11 week	not informed	yes

JF59	sertraline - 133mg	SSRI	placebo	9	12-14 week	not informed	yes
JF61	sertraline - 149mg	SSRI	placebo	9	9-11 week	no	no
JF7	sertraline - 95mg	SSRI	placebo	7	12-14 week	no	yes
JF72	sertraline - 50 to 200mg	SSRI	placebo	6	6-8 week	yes	yes
JF78	fluoxetine - 30mg	SSRI	placebo	9	12-14 week	not informed	not informed
JF80	escitalopram - 10 to 20mg	SSRI	placebo	not informed	6-8 week	no	not informed
JF82	fluoxetine - 35mg	SSRI	placebo	not informed	12-14 week	not informed	not informed
JF83	sertraline - 50 to 100mg	SSRI	placebo	7	12-14 week	no	yes
JF87	venlafaxine - 75mg venlafaxine - 150mg	SNRI	placebo	7	6-8 week	no	yes
JF88	escitalopram - 12mg	SSRI	placebo	6	6-8 week	no	yes
JF89	fluvoxamine - 174mg	SSRI	placebo	10	12-14 week	not informed	yes
JF9	duloxetine - 60mg duloxetine - 120mg	SNRI	different dose	6	9-11 week	no	yes
JF94	escitalopram - 10mg escitalopram - 20mg	SSRI	different dose	7	12-14 week	not informed	not informed
LM10	fluvoxamine - 75 to 150mg	SSRI	placebo	6	6-8 week	not informed	no
LM23	paroxetine – 12,5 to 62,5mg	SSRI	placebo	NA	12-14 week	not informed	not informed
LM24	paroxetine – 12,5 to 62,5mg	SSRI	placebo	4	6-8 week	not informed	not informed
LM34	sertraline - 135mg	SSRI	placebo	8	12-14 week	no	yes
LM37	venlafaxine - 75 to 225mg	SNRI	placebo	12	12-14 week	no	no
LM39	fluoxetine - 25mg	SSRI	placebo	10	12-14 week	not informed	no

LM4	venlafaxine - 182mg	SNRI	placebo	8	21-26 week	unclear	no
LM40	paroxetine - 25mg	SSRI	placebo	7	9-11 week	not informed	no
LM42	paroxetine - 20mg	SSRI	placebo	4	6-8 week	unclear	no
LM48	fluvoxamine - 230mg	SSRI	placebo	5	9-11 week	yes	no
LM5	fluoxetine - 44mg	SSRI	placebo	4	12-14 week	not informed	no
LM50	sertraline - 50mg sertraline - 100mg sertraline - 2000mg	SSRI	different dose	8	12-14 week	no	yes
LM54	duloxetine - 107mg venlafaxine - 184mg	SNRI	head-to-head	7	9-11 week	not informed	not informed
LM57	fluoxetine - 48mg	SSRI	placebo	8	12-14 week	no	no
LM59	fluvoxamine - 205mg	SSRI	placebo	9	6-8 week	no	no
LM6	sertraline - 146mg	SSRI	placebo	9	12-14 week	no	yes
LM60	fluvoxamine - 271mg	SSRI	placebo	7	12-14 week	no	no
LM67	fluvoxamine - 294mg	SSRI	placebo	6	9-11 week	no	no
LM69	fluoxetine - 78mg	SSRI	placebo	6	9-11 week	no	no
LM71	paroxetine - 40 to 50mg	SSRI	placebo	6	12-14 week	not informed	no
LM72	venlafaxine - 155mg	SNRI	placebo	7	6-8 week	not informed	no
LM73	escitalopram - 18mg	SSRI	placebo	8	12-14 week	no	yes
LM74	paroxetine - 20mg	SSRI	placebo	6	9-11 week	no	no
LM76	sertraline - 134mg	SSRI	placebo	4	9-11 week	not informed	not informed
LM86	sertraline - 116mg	SSRI	placebo	8	12-14 week	yes	no
LM95	sertraline - 135mg	SSRI	placebo	not informed	12-14 week	not informed	not informed
MC1	fluoxetine - 10 to 40mg	SSRI	placebo	10	12-14 week	unclear	no
MC10	paroxetine - 32mg	SSRI	placebo	8	12-14 week	no	unclear
MC12	venlafaxine - 188mg	SNRI	placebo	8	9-11 week	no	yes

MC13	paroxetine - 20mg paroxetine - 40mg paroxetine - 60mg	SSRI	different dose	8	12-14 week	no	yes
MC14	venlafaxine - 165mg	SNRI	placebo	9	12-14 week	no	yes
MC15	sertraline - 159mg	SSRI	placebo	8	12-14 week	no	yes
MC16	fluoxetine - 65mg	SSRI	placebo	9	6-8 week	no	no
MC17	venlafaxine - 202mg paroxetine - 46mg	SNRI,SSRI	head-to-head	not informed	12-14 week	no	yes
MC2	citalopram - 10 to 15mg citalopram - 20 to 40mg	SSRI	different dose	not informed	12-14 week	yes	yes
MC20a	sertraline - 50 to 200mg	SSRI	different dose	9	12-14 week	no	yes
MC20b	sertraline - 50mg sertraline - 100mg sertraline - 2000mg	SSRI	different dose	9	12-14 week	no	yes
MC22	duloxetine - 60mg	SNRI	head-to-head	6	6-8 week	unclear	not informed
MC25	venlafaxine - 142mg	SNRI	different dose	9	12-14 week	no	not informed
MC26	sertraline - 170mg	SSRI	placebo	9	12-14 week	no	not informed
MC28	sertraline - 167mg	SSRI	placebo	8	12-14 week	no	yes
MC3	venlafaxine - 110mg	SNRI	placebo	6	6-8 week	no	no
MC31	paroxetine - 20mg paroxetine - 40mg	SSRI	different dose	7	12-14 week	no	yes
MC32	paroxetine - 40mg	SSRI	placebo	3	9-11 week	no	yes
MC33	fluoxetine - 20mg fluoxetine - 40mg	SSRI	different dose	not informed	12-14 week	not informed	no
MC34	fluoxetine - 65mg	SSRI	placebo	not informed	12-14 week	not informed	no
MC38	escitalopram - 10mg	SSRI	placebo	not informed	6-8 week	not informed	no

MC39	fluoxetine - 10mg fluoxetine - 20mg	SSRI	different dose	6	9-11 week	no	no
MC4	citalopram - 10 to 30mg	SSRI	placebo	7	6-8 week	yes	no
MC40	fluoxetine - 30mg	SSRI	placebo	7	12-14 week	not informed	unclear
MC42	fluoxetine - 20mg fluoxetine - 40mg fluoxetine - 60mg	SSRI	different dose	7	6-8 week 9-11 week	yes	yes
MC44	venlafaxine - 75mg	SNRI	placebo	6	6-8 week	no	no
MC45	citalopram - 20mg citalopram - 40mg citalopram - 60mg	SSRI	different dose	6	12-14 week	no	yes
MC51	fluvoxamine - 171mg	SSRI	placebo	9	6-8 week	yes	yes
MC55	duloxetine - 20mg duloxetine - 90mg venlafaxine - 151mg	SNRI	head-to-head	not informed	9-11 week	no	no
MC56	venlafaxine - 75 to 150mg	SNRI	placebo	7	9-11 week	no	yes
MC6	escitalopram - 10 to 20mg	SSRI	placebo	9	12-14 week	yes	no
MC62	sertraline - 140mg	SSRI	placebo	7	9-11 week	yes	not informed
MC73	venlafaxine - 75mg venlafaxine - 225mg paroxetine - 40mg	SNRI,SSRI	head-to-head	9	12-14 week	no	yes
MC77	paroxetine - 27mg	SSRI	placebo	4	6-8 week	no	yes
MC79	venlafaxine - 75mg venlafaxine - 150mg paroxetine - 40mg	SNRI,SSRI	head-to-head	9	12-14 week	no	yes
MC81	venlafaxine - 166mg	SNRI	placebo	9	6-8 week	not informed	yes

MC82	sertraline - 131mg	SSRI	placebo	8	9-11 week	no	yes
MJ1	venlafaxine - 165mg	SNRI	placebo	9	12-14 week	no	yes
MJ14	duloxetine - 102mg	SNRI	placebo	6	9-11 week	no	yes
MJ16	sertraline - 50mg	SSRI	placebo	10	9-11 week	not informed	no
MJ17	fluvoxamine - 160mg	SSRI	placebo	7	6-8 week	not informed	no
MJ2	venlafaxine - 75mg venlafaxine - 150mg venlafaxine - 225mg	SNRI	different dose	8	6-8 week	no	no
MJ22	fluvoxamine - 100 to 150mg	SSRI	placebo	8	12-14 week	not informed	yes
MJ25	paroxetine - 50mg	SSRI	placebo	11	9-11 week	no	yes
MJ3	paroxetine - 20mg paroxetine - 40mg	SSRI	different dose	7	6-8 week	no	yes
MJ36	escitalopram - 11mg citalopram - 21mg	SSRI	head-to-head	7	9-11 week	no	yes
MJ4	fluoxetine - 20mg	SSRI	placebo	3	6-8 week	not informed	no
MJ42	venlafaxine - 72mg venlafaxine - 214mg	SNRI	different dose	12	12-14 week	not informed	yes
MJ44	escitalopram - 10mg escitalopram - 20mg paroxetine - 40mg	SSRI	head-to-head	11	12-14 week	no	no
MJ5	fluvoxamine - 165mg	SSRI	placebo	8	9-11 week	no	yes
MJ53	fluvoxamine - 202mg	SSRI	placebo	9	12-14 week	yes	no
MJ54	paroxetine - 37mg	SSRI	placebo	8	12-14 week	not informed	yes
MJ56	duloxetine - 54mg	SNRI	placebo	6	9-11 week	no	no
MJ6	sertraline - 106mg	SSRI	placebo	6	9-11 week	no	no
MJ64	citalopram - 36mg sertraline - 134mg	SSRI	head-to-head	8	9-11 week	yes	no

MJ66	paroxetine - 28mg	SSRI	placebo	7	12-14 week	not informed	yes
MJ70	sertraline - 147mg	SSRI	placebo	9	18-20 week	no	yes
MJ71	fluoxetine - 30mg	SSRI	placebo	not informed	6-8 week	not informed	no
MJ73	fluvoxamine - 50 to 150mg	SSRI	placebo	6	12-14 week	yes	no
MJ77	citalopram - 10 to 15mg citalopram - 20 to 40mg citalopram - 40 to 60mg	SSRI	different dose	9	6-8 week	yes	yes
MJ78	paroxetine - 33mg	SSRI	placebo	10	15-17 week	not informed	no
MJ79	sertraline - 25 to 200mg	SSRI	placebo	9	12-14 week	not informed	no
MJ80	fluvoxamine - 300mg	SSRI	placebo	8	6-8 week	no	no
MJ84	fluvoxamine - 209mg	SSRI	placebo	7	12-14 week	not informed	no
MJ85	fluvoxamine - 300mg	SSRI	placebo	7	6-8 week	not informed	not informed
MJ89	duloxetine - 60 to 120mg	SNRI	placebo	not informed	15-17 week	yes	no
MJ93	sertraline - 120mg	SSRI	placebo	6	9-11 week	yes	yes
MJ94	paroxetine - 38mg	SSRI	placebo	4	12-14 week	yes	yes
MJ96	sertraline - 200mg	SSRI	placebo	7	9-11 week	no	no
MJ97	Sertraline - 200mg	SSRI	placebo	7	9-11 week	no	no
UNG09	paroxetine - 20 to 30mg	SSRI	placebo	not informed	12-14 week	not informed	not informed
UNG1	escitalopram - 10 to 20mg	SSRI	placebo	6	6-8 week	no	yes
UNG10	paroxetine - 8mg	SSRI	placebo	not informed	12-14 week 6-8 week	not informed	not informed

UNG11	paroxetine - 20mg paroxetine - 40mg paroxetine - 60mg	SSRI	placebo	8	12-14 week	no	yes
UNG12	paroxetine - 20 to 60mg	SSRI	placebo	not informed	12-14 week	no	not informed
UNG17	paroxetine - 8mg	SSRI	placebo	not informed	12-14 week	not informed	not informed
UNG2	escitalopram - 10 to 20mg	SSRI	Placebo	6	6-8 week	no	yes
UNG3	fluvoxamine - 50 to 150mg	SSRI	Placebo	5	9-11 week	not informed	not informed
UNG6	paroxetine - 20 to 50mg	SSRI	Placebo	8	6-8 week	no	yes
UNG7	paroxetine - 12 to 38mg	SSRI	Placebo	8	6-8 week	no	yes
UNG8	paroxetine - 42mg	SSRI	Placebo	12	12-14 week	no	not informed
UPD3	desvenlafaxine - 79mg	SNRI	Placebo	8	12-14 week	no	no
UPD8	escitalopram - 15 to 20mg	SSRI	Placebo	6	12-14 week	no	not informed

S1Table F: Outcomes assessment information

id	Scale Abbreviation (Included Outcomes)	Associated Factors	DSM Factors	Type of Analysis	Effect Size (η^2)	Variance (σ^2)
JF10	LSAS	social anxiety	social anxiety	LOCF	-0,9542917	0,01481315
JF10	SPIN	social anxiety	social anxiety	LOCF	-0,5782233	0,01263008
JF11	BSPS	social anxiety	social anxiety	LOCF	-0,5757419	0,0347029
JF11	FNE	fear of negative evaluation	social anxiety	LOCF	-0,3519109	0,03254001
JF11	LSAS	social anxiety	social anxiety	LOCF	-0,4118047	0,03301649
JF15	LSAS	social anxiety	social anxiety	LOCF	-1,0019963	0,02249436
JF16	CAS	anxiety (general)	GAD	LOCF	-0,721452	0,01852891
JF16	CAS_P	panic	panic	LOCF	-1,3639951	0,02558149
JF16	CGI-S	clinical impression (severity)	psychiatric symptoms (general)	LOCF	-1,115996	0,02234446
JF16	PAAS_PAF_WK_N	panic attack (full)	panic	LOCF	-0,2768362	0,01619283
JF16	PAAS_PAL_WK_N	panic attack (limited)	panic	LOCF	-0,2314658	0,01607145
JF16	PANICSS	panic attack	panic	LOCF	-0,8502827	0,01959463
JF20	CGI-S	clinical impression (severity)	psychiatric symptoms (general)	LOCF	-0,8575966	0,04789067
JF20	HAM_A	anxiety (general)	GAD	LOCF	-0,521877	0,04195328
JF20	MSPRS_A	anxiety (general)	GAD	LOCF	-0,5143555	0,04185335
JF20	MSPRS_AGO	agoraphobia	agoraphobia	LOCF	-0,2634705	0,0393515
JF20	OPS	phobia	phobia	LOCF	-0,6237066	0,04344885
JF20	PAAS_AA	anticipatory anxiety	GAD	LOCF	-0,3835215	0,04034729
JF20	PAAS_PA_WK_N	panic attack	panic	LOCF	-0,3534824	0,04006346
JF20	PGI	patient impression (general)	psychiatric symptoms (general)	LOCF	-0,4900552	0,04154044
JF22	HAM_A	anxiety (general)	GAD	LOCF	-3,070144	0,04469707
JF25	CGI-S	clinical impression (severity)	psychiatric symptoms (general)	LOCF	-0,742756	0,01176055
JF25	LSAS	social anxiety	social anxiety	LOCF	-0,7553815	0,01182318
JF25	SADS	social anxiety	social anxiety	LOCF	-0,8112464	0,01211298

JF28	CGI-S	clinical impression (severity)	psychiatric symptoms (general)	LOCF	-1,9778461	0,05008605
JF28	FQ	fear	phobia	LOCF	-0,8900308	0,02747938
JF28	HAM_A	anxiety (general)	GAD	LOCF	-0,8940948	0,02753192
JF28	MSPRS_AV	avoidance (phobia)	phobia	LOCF	-0,6293147	0,02460896
JF28	PA_INT	panic attack (full)	panic	LOCF	-1,249166	0,03304649
JF28	PAAS_SIPA_WK_N	situational panic attack	panic	LOCF	-0,2163269	0,02207824
JF28	PAAS_SPA_WK_N	panic attack	panic	LOCF	-0,2066406	0,02204855
JF28	PAAS_AA_T_P	anticipatory anxiety	GAD	LOCF	-0,1718206	0,02195306
JF28	PAAS_PA_WK_N	panic attack	panic	LOCF	-0,3122915	0,02244584
JF28	PAAS_PAF_WK_N	panic attack (full)	panic	LOCF	-0,2304694	0,02212403
JF29	CGI-S	clinical impression (severity)	psychiatric symptoms (general)	LOCF	-2,1781147	0,01784374
JF29	HAM_A	anxiety (general)	GAD	LOCF	-2,785735	0,02479336
JF3	HADS_A	anxiety (general)	GAD	LOCF	-1,6877941	0,02088803
JF3	HAM_A	anxiety (general)	GAD	LOCF	-1,6389771	0,02030802
JF34	CGI-S	clinical impression (severity)	psychiatric symptoms (general)	LOCF	-0,7282637	0,055162
JF42	PARS	anxiety (general)(child)	GAD	Unclear	-1,5663942	0,07369717
JF42	SCARED	anxiety (general)(child)	GAD	Unclear	-0,8288436	0,04982408
JF42	SCARED_P	anxiety (general)(child)	GAD	Unclear	-1,076896	0,05621223
JF45	CAS	anxiety (general)	GAD	Unclear	-0,8975092	0,07611046
JF45	PASS	panic attack	panic	Unclear	-0,5292229	0,06560154
JF56	CAS	anxiety (general)	GAD	LOCF	-1,1879758	0,01225357
JF56	CGI-S	clinical impression (severity)	psychiatric symptoms (general)	LOCF	-2,153088	0,02121052
JF56	FQ_F	fear (phobia)	phobia	LOCF	-0,5897668	0,00929951
JF56	FQ_AV	avoidance (phobia)	phobia	LOCF	-0,4292082	0,00884505
JF59	CAPS	PTSD	PTSD	LOCF	-1,3000151	0,02521527
JF59	CAPS_AF	PTSD	PTSD	LOCF	-0,7489267	0,01914458
JF59	CGI-S	clinical impression (severity)	psychiatric symptoms (general)	LOCF	-1,1020243	0,02265837
JF59	DTS	PTSD	PTSD	LOCF	-0,5815359	0,01794723
JF59	IES	PTSD	PTSD	LOCF	-0,785729	0,01944823

JF61	CGI-S	clinical impression (severity)	psychiatric symptoms (general)	Mixed/Hierarchical/Random	-2,7676414	0,03135247
JF61	HAM_A	anxiety (general)	GAD	Mixed/Hierarchical/Random	-4,369773	0,06498505
JF7	CGI-S	clinical impression (severity)	psychiatric symptoms (general)	LOCF	-1,469546	0,0135778
JF7	HADS_A	anxiety (general)	GAD	LOCF	-0,7847475	0,00951534
JF7	HAM_A	anxiety (general)	GAD	LOCF	-1,6261643	0,01485371
JF72	CGI-S	clinical impression (severity)	psychiatric symptoms (general)	LOCF	-0,2701707	0,03492037
JF72	MOCI	OCD	OCD	LOCF	-0,1068618	0,03422068
JF72	NIMH_GOCS	OCD	OCD	LOCF	-0,3499939	0,03548291
JF72	YBOCS	OCD	OCD	LOCF	-0,2383622	0,03473655
JF78	DTS	PTSD	PTSD	LOCF	-1,1624368	0,08057888
JF78	DUKE	PTSD	PTSD	LOCF	-0,9708263	0,07300933
JF78	SIP	PTSD	PTSD	LOCF	-1,6575083	0,10643211
JF78	SVS	stress vulnerability	stress	LOCF	-0,3236088	0,05749486
JF80	CGI-S	clinical impression (severity)	psychiatric symptoms (general)	Mixed/Hierarchical/Random	-1,2703622	0,02218183
JF80	HAM_A	anxiety (general)	GAD	Mixed/Hierarchical/Random	-1,7116579	0,02850852
JF82	MASC	anxiety (general)(child)	GAD	Unclear	-0,5896658	0,15216844
JF83	CGI-S	clinical impression (severity)	psychiatric symptoms (general)	LOCF	-1,4940067	0,01384142
JF83	HAM_A	anxiety (general)	GAD	LOCF	-1,6261297	0,014932
JF87	HAM_A	anxiety (general)	GAD	LOCF	-1,9136148	0,0339894
JF88	CAS	anxiety (general)	GAD	LOCF	-1,1122637	0,01349405
JF88	CGI-S	clinical impression (severity)	psychiatric symptoms (general)	LOCF	-1,5922933	0,01762866
JF88	HADS_A	anxiety (general)	GAD	LOCF	-0,4337978	0,01015344
JF88	HAM_A	anxiety (general)	GAD	LOCF	-1,7534182	0,01934546
JF89	CGI-S	clinical impression (severity)	psychiatric symptoms (general)	LOCF	-0,8405845	0,01323779
JF89	LSAS	social anxiety	social anxiety	LOCF	-0,5324281	0,01172671
JF9	HADS	anxiety/depression (general)	GAD	LOCF	-0,8731369	0,01074962
JF9	HAM_A	anxiety (general)	GAD	LOCF	-1,0978709	0,0120152
JF94	CGI-S	clinical impression (severity)	psychiatric symptoms (general)	LOCF	-1,2451851	0,01160838
JF94	LSAS	social anxiety	social anxiety	LOCF	-1,243839	0,01159984

LM10	FQ	fear	phobia	Mixed/Hierarchical/Random	-1,9377466	0,17775952
LM10	STAI_STA	state anxiety (general)	GAD	Mixed/Hierarchical/Random	0,08991985	0,07916015
LM23	CAPS	PTSD	PTSD	Completers	-1,3163237	0,39439234
LM24	CAPS	PTSD	PTSD	Completers	-1,1190983	0,21261904
LM34	CAPS	PTSD	PTSD	Mixed/Hierarchical/Random	-0,7706386	0,0216499
LM34	CGI-S	clinical impression (severity)	psychiatric symptoms (general)	Mixed/Hierarchical/Random	-0,5944926	0,02020133
LM34	DESNOS	stress disorders	stress	Mixed/Hierarchical/Random	-0,6530411	0,02064134
LM34	DTS	PTSD	PTSD	Mixed/Hierarchical/Random	-0,3838974	0,0189601
LM34	HAM_A	anxiety (general)	GAD	Mixed/Hierarchical/Random	-0,6947136	0,02097968
LM34	IES	PTSD	PTSD	Mixed/Hierarchical/Random	-0,5144647	0,01966671
LM34	MISS	PTSD	PTSD	Mixed/Hierarchical/Random	-0,1671264	0,01824055
LM37	HAM_A	anxiety (general)	GAD	Completers	-1,7097381	0,0233197
LM39	CGI-S	clinical impression (severity)	psychiatric symptoms (general)	LOCF	-0,7316824	0,05523999
LM39	COIS	OCD	OCD	LOCF	-0,3056557	0,05333492
LM39	CYBOCS	OCD (child)	OCD	LOCF	-1,1028256	0,0658785
LM39	NIMH_GOCS	OCD	OCD	LOCF	-0,7926559	0,05669224
LM4	CAPS	PTSD	PTSD	LOCF	-2,8773194	0,03356835
LM4	CGI-S	clinical impression (severity)	psychiatric symptoms (general)	LOCF	-2,4214892	0,02637979
LM4	SVS	stress vulnerability	stress	LOCF	-0,9332823	0,01152088
LM40	CYBOCS	OCD (child)	OCD	LOCF	-1,0497786	0,0195335
LM42	LSAS	social anxiety	social anxiety	Mixed/Hierarchical/Random	-0,1581679	0,09453178
LM48	NIMH_GOCS	OCD	OCD	LOCF	-0,2644668	0,01967912
LM48	YBOCS	OCD	OCD	LOCF	-0,3196613	0,01988579
LM5	BSPS	social anxiety	social anxiety	Mixed/Hierarchical/Random	-1,2311276	0,03763063
LM5	CGI-S	clinical impression (severity)	psychiatric symptoms (general)	Mixed/Hierarchical/Random	-9,8722495	0,83717759
LM5	SPAI	social anxiety	social anxiety	Mixed/Hierarchical/Random	-0,8085842	0,0304484
LM50	CGI-S	clinical impression (severity)	psychiatric symptoms (general)	Unclear	-0,990932	0,02370206
LM50	NIMH_GOCS	OCD	OCD	Unclear	-0,9248698	0,02294872
LM50	YBOCS	OCD	OCD	Unclear	-0,9707089	0,02346593

LM54	HADS_A	anxiety (general)	GAD	LOCF	-1,2565712	0,01422041
LM54	HAM_A	anxiety (general)	GAD	LOCF	-1,5770419	0,01704056
LM57	DTS	PTSD	PTSD	Unclear	-0,6305615	0,28313399
LM57	SIP	PTSD	PTSD	Unclear	-0,0840749	0,25058905
LM59	CAS	anxiety (general)	GAD	Unclear	-0,6359543	0,04728386
LM6	CAPS	PTSD	PTSD	Mixed/Hierarchical/Random	-1,6158915	0,02597734
LM6	CAPS_AF	PTSD	PTSD	Mixed/Hierarchical/Random	-0,655554	0,01587848
LM6	CGI-S	clinical impression (severity)	psychiatric symptoms (general)	Mixed/Hierarchical/Random	-1,1033017	0,01952442
LM6	DTS	PTSD	PTSD	Mixed/Hierarchical/Random	-0,7579935	0,01654886
LM6	HAM_A	anxiety (general)	GAD	Mixed/Hierarchical/Random	-0,8587862	0,0173033
LM6	IES	PTSD	PTSD	Mixed/Hierarchical/Random	-0,9655792	0,01820529
LM60	CGI-S	clinical impression (severity)	psychiatric symptoms (general)	LOCF	-0,4427565	0,01268267
LM60	YBOCS	OCD	OCD	LOCF	-1,5644064	0,02161654
LM67	CGI	clinical impression (general)	psychiatric symptoms (general)	Unclear	-0,2399776	0,07643973
LM67	NIMH_GOCS	OCD	OCD	Unclear	-0,4517225	0,08010133
LM67	YBOCS	OCD	OCD	Unclear	-0,1416261	0,07550145
LM69	CPRS_OCD	OCD	OCD	LOCF	-0,6527481	0,08157333
LM69	NIMH_GOCS	OCD	OCD	LOCF	-0,3847778	0,07495367
LM69	YBOCS	OCD	OCD	LOCF	-0,0310305	0,0714515
LM71	YBOCS	OCD	OCD	LOCF	-1,0087221	0,02136979
LM72	CGI-S	clinical impression (severity)	psychiatric symptoms (general)	LOCF	-1,3179775	0,01850416
LM72	GA_VAS	anxiety (general)	GAD	LOCF	-0,624819	0,01324375
LM72	HADS_A	anxiety (general)	GAD	LOCF	-1,0836704	0,01630602
LM72	HAM_A	anxiety (general)	GAD	LOCF	-2,5700561	0,03752027
LM73	LSAS	social anxiety	social anxiety	LOCF	-1,615028	0,0158427
LM74	CAS	anxiety (general)	GAD	LOCF	-2,486081	0,0337522
LM74	CGI-S	clinical impression (severity)	psychiatric symptoms (general)	LOCF	-1,6573874	0,02112843
LM74	HAM_A	anxiety (general)	GAD	LOCF	-2,010023	0,02588306
LM76	BSPS	social anxiety	social anxiety	LOCF	-0,6746749	0,28793218

LM76	FQ	fear	phobia	LOCF	-0,2407598	0,25483044
LM76	LSAS	social anxiety	social anxiety	LOCF	-0,3093321	0,25797386
LM86	ACQ	panic	panic	Mixed/Hierarchical/Random	-0,7628388	0,02888648
LM86	BSQ	somatic anxiety	somatic	Mixed/Hierarchical/Random	-1,2771864	0,03734843
LM86	CGI-S	clinical impression (severity)	psychiatric symptoms (general)	Mixed/Hierarchical/Random	-1,7558148	0,04905553
LM86	MI-AAL	avoidance (panic)	panic	Mixed/Hierarchical/Random	-0,5706398	0,0268196
LM95	CGI-S	clinical impression (severity)	psychiatric symptoms (general)	LOCF	-0,9783912	0,0549618
LM95	IES_R	PTSD	PTSD	LOCF	-4,7861842	0,35982721
MC10	CGI-S	clinical impression (severity)	psychiatric symptoms (general)	LOCF	-0,8714082	0,01021563
MC10	LSAS	social anxiety	social anxiety	LOCF	-0,7703291	0,00976469
MC10	SADS	social anxiety	social anxiety	LOCF	-0,7704094	0,00976503
MC12	CGI-S	clinical impression (severity)	psychiatric symptoms (general)	LOCF	-1,5499721	0,01607861
MC12	FQ_F	fear (phobia)	phobia	LOCF	-0,595949	0,00998558
MC12	FQ_AV	avoidance (phobia)	phobia	LOCF	-0,456146	0,00954783
MC12	HAM_A	anxiety (general)	GAD	LOCF	-1,396932	0,01473637
MC12	PDSS	panic	panic	LOCF	-2,0455503	0,02138177
MC13	CGI-S	clinical impression (severity)	psychiatric symptoms (general)	LOCF	-1,0442068	0,02152825
MC13	LSAS	social anxiety	social anxiety	LOCF	-0,6441535	0,01797334
MC13	SADS	social anxiety	social anxiety	LOCF	-0,7112427	0,01845193
MC14	CGI-S	clinical impression (severity)	psychiatric symptoms (general)	LOCF	-0,6999775	0,01264481
MC14	LSAS	social anxiety	social anxiety	LOCF	-0,8438757	0,01344973
MC15	BSPS	social anxiety	social anxiety	LOCF	-1,2395827	0,01111903
MC15	CGI-S	clinical impression (severity)	psychiatric symptoms (general)	LOCF	-1,1386287	0,01053058
MC15	HAM_A	anxiety (general)	GAD	LOCF	-0,2061311	0,00745708
MC15	LSAS	social anxiety	social anxiety	LOCF	-1,351232	0,01182801
MC16	CGI-S	clinical impression (severity)	psychiatric symptoms (general)	LOCF	-0,8308468	0,0838706
MC16	CYBOCS	OCD (child)	OCD	LOCF	-0,8802656	0,08579244
MC16	NIMH_GOCS	OCD	OCD	LOCF	-0,9853595	0,09024848
MC17	LSAS	social anxiety	social anxiety	LOCF	-1,1442139	0,01496259

MC17	SPIN	social anxiety	social anxiety	LOCF	-0,7054926	0,01214486
MC2	FQ	phobia	phobia	LOCF	-1,1539582	0,02256052
MC20a	PAAS_AA_T_P	anticipatory anxiety	GAD	LOCF	-0,1513503	0,03435121
MC20a	PAAS_PA_WK_N	panic attack	panic	LOCF	-0,0377861	0,03410713
MC20a	PAAS_PAL_WK_N	panic attack (limited)	panic	LOCF	0,01183661	0,0340925
MC20a	PAAS_UA_WK_DN	unexpected panic attack	panic	LOCF	-0,112924	0,03423582
MC20b	PAAS_PA_WK_N	panic attack	panic	LOCF	-0,0377861	0,03410713
MC20b	PAAS_PAL_WK_N	panic attack (limited)	panic	LOCF	0,01183661	0,0340925
MC20b	PAAS_UA_WK_DN	unexpected panic attack	panic	LOCF	-0,112924	0,03423582
MC22	HADS_A	anxiety (general)	GAD	LOCF	-1,2439791	0,01448243
MC22	HAM_A	anxiety (general)	GAD	LOCF	-3,0312745	0,03881728
MC25	SAS_CA	social anxiety (child)	social anxiety	LOCF	-1,6143463	0,01893957
MC26	CYBOCS	OCD (child)	OCD	LOCF	-1,089727	0,07477687
MC28	CGI-S	clinical impression (severity)	psychiatric symptoms (general)	LOCF	-0,7405211	0,01867564
MC28	CYBOCS	OCD (child)	OCD	LOCF	-0,7031524	0,0183917
MC28	NIMH_GOCS	OCD	OCD	LOCF	-0,8610567	0,01969168
MC3	HAM_A	anxiety (general)	GAD	LOCF	-1,5494735	0,02213471
MC31	CAPS	PTSD	PTSD	LOCF	-1,584734	0,01481554
MC32	CAPS	PTSD	PTSD	LOCF	-0,7571516	0,06617183
MC32	CAPS_AF	PTSD	PTSD	LOCF	-0,4762544	0,05975589
MC32	HAM_A	anxiety (general)	GAD	LOCF	-0,6918532	0,06441965
MC33	CAPS	PTSD	PTSD	LOCF	-2,1661744	0,04370632
MC33	CGI-S	clinical impression (severity)	psychiatric symptoms (general)	LOCF	-2,5587555	0,05424562
MC33	DTS	PTSD	PTSD	LOCF	-1,3858895	0,02795846
MC33	HAM_A	anxiety (general)	GAD	LOCF	-1,2424276	0,02581606
MC33	TOP8	PTSD	PTSD	LOCF	-2,5668459	0,05448124
MC34	CAPS	PTSD	PTSD	LOCF	-1,1717548	0,06430896
MC34	CGI-S	clinical impression (severity)	psychiatric symptoms (general)	LOCF	-1,0422079	0,06009114
MC34	DTS	PTSD	PTSD	LOCF	-0,3292769	0,04571211

MC34	HAM_A	anxiety (general)	GAD	LOCF	-0,5084752	0,04791981
MC34	TOP8	PTSD	PTSD	LOCF	-1,4943422	0,07695675
MC38	CGI-S	clinical impression (severity)	psychiatric symptoms (general)	LOCF	-2,1423472	0,01790012
MC38	HAM_A	anxiety (general)	GAD	LOCF	-2,4841495	0,02162971
MC39	HAM_A	anxiety (general)	GAD	LOCF	-0,6560225	0,02198952
MC39	PAAS_PA_WK_N	panic attack	panic	LOCF	-0,3257311	0,0199109
MC4	HAM_A	anxiety (general)	GAD	LOCF	-1,7792111	0,18134095
MC40	HAM_A	anxiety (general)	GAD	LOCF	-1,4799184	0,02883421
MC40	PAAS_PAF_WK_N	panic attack (full)	panic	LOCF	-0,7271332	0,01960402
MC40	PDSS	panic	panic	LOCF	-2,2835589	0,0456369
MC40	STAI_STA	state anxiety (general)	GAD	LOCF	-0,6046008	0,01869746
MC42	CAS	anxiety (general)	GAD	LOCF	-0,1292711	0,02693492
MC42	CGI-S	clinical impression (severity)	psychiatric symptoms (general)	LOCF	-0,6575273	0,03064591
MC42	CPRS_OCD	OCD (child)	OCD	LOCF	-0,6211136	0,0302302
MC42	YBOCS	OCD	OCD	LOCF	-0,4543264	0,02862868
MC44	HADS_A	anxiety (general)	GAD	LOCF	-1,2179815	0,02219544
MC44	HAM_A	anxiety (general)	GAD	LOCF	-2,0932264	0,03654256
MC45	NIMH_GOCS	OCD	OCD	LOCF	-0,9924781	0,01972779
MC45	YBOCS	OCD	OCD	LOCF	-1,4250967	0,02490545
MC51	CAS	anxiety (general)	GAD	LOCF	-0,9079307	0,04068445
MC51	CGI_E	clinical impression (efficacy)	psychiatric symptoms (general)	LOCF	-1,6813599	0,06198905
MC51	CGI-S	clinical impression (severity)	psychiatric symptoms (general)	LOCF	-1,2646177	0,04892828
MC51	PAAS_AA	anticipatory anxiety	GAD	LOCF	-0,4276485	0,03386046
MC51	PAAS_AA_T_P	anticipatory anxiety	GAD	LOCF	-0,324261	0,03303346
MC51	PAAS_PAF_WK_N	panic attack (full)	panic	LOCF	-0,2831551	0,03276784
MC51	PAAS_PAL_WK_N	panic attack (limited)	panic	LOCF	-0,4968141	0,03454068
MC55	HAM_A	anxiety (general)	GAD	LOCF	-1,5683392	0,01605791
MC56	HAM_A	anxiety (general)	GAD	Unclear	-1,6263826	0,12829819
MC6	HAM_A	anxiety (general)	GAD	LOCF	-0,7772645	0,0193771

MC6	PSWQ	worry (GAD)	GAD	LOCF	-0,3179887	0,01667267
MC62	CGI-S	clinical impression (severity)	psychiatric symptoms (general)	LOCF	-0,5587144	0,0473166
MC62	IES_R	PTSD	PTSD	LOCF	-3,4221256	0,21015634
MC73	PAAS_PAF_WK_N	panic attack (full)	panic	LOCF	-0,4830987	0,0102974
MC73	PDSS	panic	panic	LOCF	-2,4811419	0,02915944
MC77	HADS_A	anxiety (general)	GAD	LOCF	-0,8056153	0,0111933
MC77	HAM_A	anxiety (general)	GAD	LOCF	-1,8191313	0,01935349
MC79	CGI-S	clinical impression (severity)	psychiatric symptoms (general)	LOCF	-2,0033984	0,0224795
MC79	FQ_F	fear (phobia)	phobia	LOCF	-0,6509821	0,01097365
MC79	FQ_AV	avoidance (phobia)	phobia	LOCF	-0,5431747	0,01056102
MC81	HAM_A	anxiety (general)	GAD	LOCF	0,0053446	0,12500119
MC81	MSPRS_F	fear	phobia	LOCF	-0,5259239	0,13652483
MC81	MSPRS_AV	avoidance (phobia)	phobia	LOCF	-0,3515702	0,13015007
MC81	PAAS_PA_WK_N	panic attack	panic	LOCF	0,60583701	0,14029327
MC81	SCL61	psychiatric symptoms (general)	psychiatric symptoms (general)	LOCF	-0,1450424	0,12587655
MC82	CGI-S	clinical impression (severity)	psychiatric symptoms (general)	LOCF	-1,2887554	0,02648233
MC82	HAM_A	anxiety (general)	GAD	LOCF	-2,0620086	0,04120386
MC82	PAAS_AA_T_P	anticipatory anxiety	GAD	LOCF	-0,0069399	0,01704573
MC82	PAAS_PAF_EB	panic attack (full)	panic	LOCF	-0,1992728	0,01727108
MC82	PDSS	panic	panic	LOCF	-0,158616	0,0171884
MJ1	LSAS	social anxiety	social anxiety	LOCF	-0,9694289	0,01459182
MJ14	HADS_A	anxiety (general)	GAD	LOCF	-0,5914595	0,01053404
MJ14	HADS_D	anxiety (general)	GAD	LOCF	-0,3744015	0,00987477
MJ14	HAM_A	anxiety (general)	GAD	LOCF	-0,742024	0,01116541
MJ16	ADIS_C	anxiety (general)(child)	GAD	Unclear	-1,5938333	0,25183203
MJ16	ADIS_P	anxiety (general)(child)	GAD	Unclear	-1,7429639	0,27445106
MJ16	HAM_A	anxiety (general)	GAD	Unclear	-0,5305787	0,14915972
MJ16	MASC	anxiety (general)(child)	GAD	Unclear	-0,9387934	0,17642423
MJ16	RCMAS	anxiety (general)(child)	GAD	Unclear	-0,4018408	0,14370346

MJ17	PAAS_PA_WK_N	panic attack	panic	Completers	-0,4131522	0,06892815
MJ2	HAM_A	anxiety (general)	GAD	LOCF	-2,1495087	0,03968952
MJ22	HAM_A	anxiety (general)	GAD	LOCF	-1,3468351	0,06505358
MJ25	CGI-S	clinical impression (severity)	psychiatric symptoms (general)	LOCF	-1,3487459	0,00541474
MJ25	HAM_A	anxiety (general)	GAD	LOCF	-0,8008748	0,00409146
MJ25	MSPRS_F	fear	phobia	LOCF	-0,4897049	0,00364024
MJ25	MSPRS_AV	avoidance (phobia)	phobia	LOCF	-0,392692	0,00354405
MJ25	PAAS_PA_WK_N	panic attack	panic	LOCF	-0,3499012	0,00350835
MJ3	CGI-S	clinical impression (severity)	psychiatric symptoms (general)	LOCF	-1,8256392	0,01759155
MJ3	HADS_A	anxiety (general)	GAD	LOCF	-0,968142	0,01093694
MJ3	HAM_A	anxiety (general)	GAD	LOCF	-2,5029648	0,02573565
MJ36	CGI-S	clinical impression (severity)	psychiatric symptoms (general)	LOCF	-1,9872566	0,02919827
MJ36	HAM_A	anxiety (general)	GAD	LOCF	-0,6624189	0,01444873
MJ36	PAAS	panic	panic	LOCF	-0,4613274	0,01349926
MJ36	PAAS_PA_WK_N	panic attack	panic	LOCF	-0,2384708	0,01284398
MJ4	CGI_OCD	OCD	OCD	LOCF	-0,8686267	0,26817945
MJ4	LOICV	obsession (child)	OCD	LOCF	-0,2921744	0,22038328
MJ4	RCMAS	anxiety (general)(child)	GAD	LOCF	-0,4114547	0,22637821
MJ4	YBOCS	OCD	OCD	LOCF	-0,6091668	0,24079173
MJ42	LSAS	social anxiety	social anxiety	LOCF	-0,92593	0,01439308
MJ42	SPIN	social anxiety	social anxiety	LOCF	-0,5007003	0,01212948
MJ44	NIMH_GOCS	OCD	OCD	LOCF	-0,9411197	0,01689438
MJ44	YBOCS	OCD	OCD	LOCF	-2,0009998	0,03045218
MJ5	CGI	clinical impression (general)	psychiatric symptoms (general)	LOCF	-0,329282	0,02467005
MJ5	CYBOCS	OCD (child)	OCD	LOCF	-0,6791441	0,02747013
MJ5	NIMH_GOCS	OCD	OCD	LOCF	-0,7761647	0,02859073
MJ5	PAGI	parent impression (general)	psychiatric symptoms (general)	LOCF	-0,329282	0,02467005
MJ5	PGI	patient impression (general)	psychiatric symptoms (general)	LOCF	-0,493923	0,02574571
MJ53	BSPS	social anxiety	social anxiety	LOCF	-0,9082818	0,04346563

MJ53	LSAS	social anxiety	social anxiety	LOCF	-0,2438365	0,03476655
MJ53	SPIN	social anxiety	social anxiety	LOCF	-0,4180591	0,03607697
MJ54	LSAS	social anxiety	social anxiety	LOCF	-0,6528558	0,01842054
MJ56	CGI-S	clinical impression (severity)	psychiatric symptoms (general)	LOCF	-2,320438	0,03060012
MJ56	PARS	anxiety (general)(child)	GAD	LOCF	-2,6519292	0,0366158
MJ6	CGI-S	clinical impression (severity)	psychiatric symptoms (general)	LOCF	-2,9629375	0,09499192
MJ6	CSDC	PTSD	PTSD	LOCF	-1,6429108	0,04596094
MJ6	UCLA_PTSD	PTSD	PTSD	LOCF	-2,2222031	0,06401763
MJ64	CAPS	PTSD	PTSD	LOCF	-2,9645397	0,58942477
MJ64	IES_R	PTSD	PTSD	LOCF	-3,0247074	0,60744275
MJ66	CAPS	PTSD	PTSD	LOCF	-1,5138429	0,01696064
MJ66	DTS	PTSD	PTSD	LOCF	-1,0313608	0,0130247
MJ66	TOP8	PTSD	PTSD	LOCF	-0,1091214	0,00965355
MJ70	BSPS	social anxiety	social anxiety	LOCF	-0,9349618	0,02807358
MJ70	CGI-S	clinical impression (severity)	psychiatric symptoms (general)	LOCF	-1,2122283	0,03238766
MJ70	FNE	fear of negative evaluation	social anxiety	LOCF	-0,4895098	0,02347551
MJ70	FQ_SA	social anxiety	social anxiety	LOCF	-0,3174321	0,0224693
MJ70	SADS	social anxiety	social anxiety	LOCF	-1,0838597	0,03025182
MJ70	SPAI_SA	social anxiety	social anxiety	LOCF	-0,8772037	0,02731512
MJ71	CAPS	PTSD	PTSD	Unclear	-2,0019949	0,12082731
MJ73	HAM_A	anxiety (general)	GAD	Completers	-0,8259477	0,14162268
MJ73	LSAS_AV	avoidance (social anxiety)	social anxiety	Completers	-0,6658883	0,13243874
MJ73	SCL90	psychiatric symptoms (general)	psychiatric symptoms (general)	Completers	-0,7787507	0,13870972
MJ73	SPAI	social anxiety	social anxiety	Completers	-0,5191671	0,12575133
MJ77	HAM_A	anxiety (general)	GAD	LOCF	-1,3466381	0,02506997
MJ78	K_GSADS_A	social anxiety	social anxiety	LOCF	-0,7991796	0,01158818
MJ78	LSAS_C	social anxiety (child)	social anxiety	LOCF	-0,8921699	0,01208907
MJ78	SPAI	social anxiety	social anxiety	LOCF	-0,5882172	0,01065605
MJ78	SPIN_C	social anxiety (child)	social anxiety	LOCF	-0,7297411	0,01125007

MJ79	CGI-S	clinical impression (severity)	psychiatric symptoms (general)	LOCF	-1,8384989	0,0419742
MJ79	PARS	anxiety (general)(child)	GAD	LOCF	-1,776853	0,04050794
MJ80	PARS	anxiety (general)(child)	GAD	LOCF	-1,0870503	0,03216676
MJ84	CGI-S	clinical impression (severity)	psychiatric symptoms (general)	LOCF	-1,06108	0,01366189
MJ84	LSAS	social anxiety	social anxiety	LOCF	-1,3219177	0,01572009
MJ85	FQ	fear	phobia	Unclear	-0,3577375	0,0781994
MJ85	HAM_A	anxiety (general)	GAD	Unclear	-0,3219637	0,07759152
MJ85	SCL90	psychiatric symptoms (general)	psychiatric symptoms (general)	Unclear	0	0,075
MJ85	STAI_STA	state anxiety (general)	GAD	Unclear	0,08943437	0,07519996
MJ89	HADS_A	anxiety (general)	GAD	LOCF	-1,6211695	0,02758917
MJ89	HAM_A	anxiety (general)	GAD	LOCF	-2,2867637	0,04033965
MJ93	CAPS	PTSD	PTSD	LOCF	-1,1049766	0,11107825
MJ93	CGI-S	clinical impression (severity)	psychiatric symptoms (general)	LOCF	-0,6019492	0,08848271
MJ94	YBOCS	OCD	OCD	LOCF	-0,9366658	0,01958254
MJ96	CGI-S	clinical impression (severity)	psychiatric symptoms (general)	LOCF	-2,3198415	0,03199109
MJ96	HADS_A	anxiety (general)	GAD	LOCF	-1,8641584	0,02471407
MJ96	HAM_A	anxiety (general)	GAD	LOCF	-3,0996202	0,04812078
MJ97	MOCI	OCD	OCD	Completers	-0,0975895	0,16719576
MJ97	NIMH_GOCS	OCD	OCD	Completers	0,13887744	0,16773816
MJ97	YBOCS	OCD	OCD	Completers	-0,0940316	0,16715789
UNG1	CGI-S	clinical impression (severity)	psychiatric symptoms (general)	LOCF	-1,581573	0,02148974
UNG1	HAM_A	anxiety (general)	GAD	LOCF	-2,255206	0,03158576
UNG10	CGI-S	clinical impression (severity)	psychiatric symptoms (general)	LOCF	-0,6173683	0,14088098
UNG10	LSAS	social anxiety	social anxiety	LOCF	-0,562409	0,13817933
UNG11	CGI-S	clinical impression (severity)	psychiatric symptoms (general)	LOCF	-0,4072368	0,01778563
UNG11	NIMH_GOCS	OCD	OCD	LOCF	-0,3894637	0,01770608
UNG11	SCL90	psychiatric symptoms (general)	psychiatric symptoms (general)	LOCF	-0,0512377	0,01686868
UNG11	YBOCS	OCD	OCD	LOCF	-0,642025	0,01916964
UNG12	CGI_E	clinical impression (efficacy)	psychiatric symptoms (general)	LOCF	0,45132653	0,02080322

UNG12	CGI-S	clinical impression (severity)	psychiatric symptoms (general)	LOCF	-0,620574	0,02198125
UNG12	NIMH_GOCS	OCD	OCD	LOCF	-0,8381778	0,02404248
UNG12	SCL90	psychiatric symptoms (general)	psychiatric symptoms (general)	LOCF	-0,1865592	0,01970652
UNG12	YBOCS	OCD	OCD	LOCF	-0,9457342	0,0252884
UNG17	LSAS	social anxiety	social anxiety	LOCF	-0,5709883	0,0268228
UNG2	CGI-S	clinical impression (severity)	psychiatric symptoms (general)	LOCF	-1,9048195	0,02401571
UNG2	HAM_A	anxiety (general)	GAD	LOCF	-2,1446856	0,02753506
UNG3	CYBOCS	OCD (child)	OCD	LOCF	-1,1984289	0,12322866
UNG6	CAS	anxiety (general)	GAD	LOCF	-0,9570212	0,01069915
UNG6	CGI-S	clinical impression (severity)	psychiatric symptoms (general)	LOCF	-0,8834042	0,01032897
UNG6	HADS	anxiety/depression (general)	GAD	LOCF	-0,6748226	0,00944094
UNG6	HAM_A	anxiety (general)	GAD	LOCF	-2,0796806	0,02001386
UNG7	CAS	anxiety (general)	GAD	LOCF	-1,6344297	0,01739681
UNG7	CGI-S	clinical impression (severity)	psychiatric symptoms (general)	LOCF	-2,0404921	0,02197426
UNG7	HADS	anxiety/depression (general)	GAD	LOCF	-0,8517688	0,01142795
UNG7	HAM_A	anxiety (general)	GAD	LOCF	-2,9286613	0,03551245
UNG8	CAPS	PTSD	PTSD	LOCF	-2,9322805	0,52719404
UNG8	DTS	PTSD	PTSD	LOCF	-3,3010126	0,63166745
UNG8	TOP8	PTSD	PTSD	LOCF	-2,0659249	0,33036571
UNG9	LSAS	social anxiety	social anxiety	LOCF	-1,4560028	0,03605594
UPD3	HAM_A	anxiety (general)	GAD	LOCF	-0,50085	0,05418085
UPD3	LSAS	social anxiety	social anxiety	LOCF	-1,6637031	0,0961318
UPD8	PARS	anxiety (general)(child)	GAD	LOCF	-1,7043228	0,11809432

Table G: Multiple multilevel meta-regression model for placebo response on the aggregate measure of internalizing in adults

	o/k (n)	SMD	95% CI	p-value
Main disorder				
GAD [index]	18/8 (1224)	-	-	-
PTSD	8/3 (113)	0.26	0.23 to 1.40	0.64
Panic	29/7 (936)	1.00	0.23 to 1.77	0.01 *
SAD	29/11 (748)	0.32	0.23 to 1.15	0.45
OCD	11/5 (469)	1.20	0.44 to 1.96	0.001 *
Sampling				
Outpatients [index]	71/27 (2394)	-	-	-
Mixed	4/1 (128)	0.74	-0.49 to 1.97	0.24
Unclear	20/6 (968)	-0.23	-0.81 to 0.33	0.41
Concomitant benzodiazepine use				
No [index]	38/14 (2117)	-	-	-
Not informed	20/8 (610)	0.36	-0.46 to 1.18	0.38
Unclear	3/2 (173)	2.27	0.96 to 3.57	0.001 *
Yes	34/10 (590)	0.31	-0.36 to 0.99	0.36
Placebo lead-in period				
No [index]	41/17 (1241)	-	-	-
Not informed	11/6 (675)	0.11	-0.61 to 0.85	0.75
Yes	43/11 (1574)	-0.18	-0.83 to 0.45	0.56
Time to outcome measure				
12-14 week [index]	39/16 (1644)	-	-	-
6-8 week	29/10 (845)	-0.58	-1.27 to 0.10	0.09
9-11 week	21/7 (932)	-0.06	-0.58 to 0.45	0.09
18-20 week	6/1 (69)	0.45	-0.43 to 1.35	0.31
Data analysis method				
Mixed, hierarchical, or random models [index]	8/3 (138)	-	-	-
Completers	7/4 (173)	0.54	-0.40 to 1.49	0.25
Last observation carried forward (LOCF)	80/27 (3179)	0.69	-0.08 to 1.48	0.08
Number of sites				
Single center [index]	22/8 (228)	-	-	-
Multicenter	73/26 (3262)	-0.54	-1.11 to 0.03	0.06
Comparator				
Head-to-head [index]	7/4 (421)	-	-	-
Different dose	7/3 (348)	1.87	0.79 to 2.96	0.0007 *

Placebo	81/27 (2721)	2.13	0.89 to 3.38	0.0008 *
Number of drug arms				
One [index]	81/27 (2721)	-	-	-
Three	10/5 (563)	2.13	-0.61 to 1.93	0.30
Sample size at baseline	95/34 (3490)	0.0002	-0.003 to 0.003	0.88
Number of visits	95/34 (3490)	0.11	-0.03 to 0.25	0.13
Publication year	95/34 (3490)	-0.02	-0.07 to 0.01	0.21
Baseline severity of symptoms	95/34 (3490)	0.004	-0.002 to 0.01	0.22

o, number of outcome measures; k, number of studies; n, sample size; SMD, standardized mean difference; GAD, generalized anxiety disorder; PTSD, post-traumatic stress disorder; SAD, social anxiety disorder; OCD, obsessive-compulsive disorder. * Significant differences.

Table H: Multiple multilevel meta-regression model for placebo response on the aggregate measure of internalizing in adults and elderly

	o/k (n)	SMD	95% CI	p-value
Main disorder				
GAD [index]	25/13 (1777)	-	-	-
PTSD	26/8 (761)	0.28	-0.64 to 1.21	0.54
Panic	46/10 (959)	0.57	-0.35 to 1.51	0.22
SAD	18/8 (1101)	0.37	-0.31 to 1.06	0.28
OCD	9/3 (229)	0.35	-0.78 to 1.49	0.54
Sampling				
Outpatients [index]	100/35 (4062)	-	-	-
Community	4/2 (273)	0.18	-0.62 to 1.00	0.64
Mixed	4/2 (278)	0.13	-0.78 to 1.06	0.76
Unclear	16/3 (214)	0.05	-0.78 to 1.24	0.93
Concomitant benzodiazepine use				
No [index]	78/28 (3375)	-	-	-
Not informed	25/9 (1117)	0.24	-0.35 to 0.84	0.41
Unclear	3/1 (168)	-0.40	-1.72 to 0.92	0.55
Yes	18/4 (167)	0.20	-0.99 to 1.40	0.73
Placebo lead-in period				
No [index]	13/7 (814)	-	-	-
Not informed	4/2 (196)	0.90	-0.60 to 2.41	0.24
Unclear	4/1 (90)	-0.57	-2.04 to 0.88	0.43
Yes	103/32 (3727)	0.82	0.18 to 1.46	0.01 *
Time medicated to outcome measure				
12-14 week [index]	65/22 (2646)	-	-	-
6-8 week	19/8 (816)	-0.41	-1.39 to 0.57	0.41
9-11 week	37/11 (1197)	-0.45	-1.24 to 0.34	0.26
Data analysis method				
Mixed, hierarchical, or random models [index]	15/3 (361)	-	-	-
Last observation carried forward (LOCF)	103/36 (4354)	-0.45	-0.58 to 1.35	0.43
Unclear	6/3 (112)	0.27	-0.99 to 1.54	0.43
Study funding source				
Academic [index]	2/1 (35)	-	-	-
Industry	104/35 (4243)	2.19	-0.35 to 4.74	0.09
Unclear	18/6 (549)	1.99	-0.64 to 4.62	0.13
Number of sites				
Single center [index]	9/3 (53)	-	-	-
Multicenter	115/39 (4774)	-0.40	-1.46 to 0.64	0.44

Comparator				
Placebo [index]	77/27 (3026)	-	-	-
Different dose	34/11 (1208)	0.18	-0.72 to 1.08	0.69 0.79
Head-to-head	13/4 (593)	-0.18	-1.58 to 1.21	
Number of drug arms				
One [index]	80/27 (2972)	-	-	-
Two	15/7 (1053)	-0.20	-1.31 to 0.91	0.72
Three	29/8 (802)	-0.58	-1.44 to 0.28	0.18
Sample size at baseline	124/42 (4827)	-0.006	-0.01 to -0.001	0.01 *
Number of visits	124/42 (4827)	-0.09	-0.32 to 0.13	0.41
Publication year	124/42 (4827)	0.02	-0.04 to 0.10	0.46
Baseline severity of symptoms	124/42 (4827)	-0.003	-0.007 to 0.001	0.14

o, number of outcome measures; k, number of studies; n, sample size; SMD, standardized mean difference; GAD, generalized anxiety disorder; PTSD, post-traumatic stress disorder; SAD, social anxiety disorder; OCD, obsessive-compulsive disorder. * Significant differences.

SI Table I: Multiple multilevel meta-regression model for placebo response on the aggregate measure of internalizing in elderly

	o/k (n)	SMD	95% CI	p-value
Main disorder				
GAD [index]	4/2 (233)	-	-	-
More than one anxiety disorder	1/1 (17)	-1.01	-1.89 to -0.13	0.02 *
Sampling				
Outpatients [index]	2/1 (140)	-	-	-
Mixed	3/2 (110)	0.84	0.48 to 1.20	<.0001 *
Baseline severity of symptoms				
	5/3 (250)	0.01	0.002 to 0.02	0.01 *

o, number of outcome measures; k, number of studies; n, sample size; SMD, standardized mean difference; GAD, generalized anxiety disorder. * Significant differences.

SI Table J: Multiple multilevel meta-regression model for placebo response on the aggregate measure of internalizing symptoms in children and adolescents

	o/k (n)	SMD	95% CI	p-value
Main disorder				
GAD [index]	7/2 (148)	-	-	-
PTSD	3/1(62)	-12.98	-28.20 to 2.22	0.09
More than one anxiety disorder	3/2(141)	4.89	-0.81 to 10.61	0.09
SAD	6/3(337)	35.75	-7.46 to 78.97	0.10
OCD	21/7(352)	15.6	-2.82 to 34.08	0.09
Sampling				
Outpatients [index]	32/12(954)	-	-	-
Community	1/1(32)	0.86	-0.57 to 2.29	0.24
Unclear	7/2(54)	-18.15	-39.65 to 3.34	0.09
Concomitant benzodiazepine use				
No [index]	19/8(620)	-	-	-
Not informed	21/7(420)	-19.89	-44.80 to 5.02	0.11
Placebo lead-in period				
No [index]	29/10(674)	-	-	-
Not informed	3/3(208)	-38.42	-85.84 to 8.99	0.11
Yes	8/2(158)	-26.78	-60.23 to 6.67	0.11
Time to outcome measure				
12-14 week [index]	12/6(411)	-	-	-
6-8 week	8/3(94)	-21.69	-48.46 to 5.07	0.11
9-11 week	16/5(378)	-5.41	-11.92 to 1.09	0.10
15-17 week	4/1(157)	-16.08	-36.76 to 4.60	0.12
Data analysis method				
Last observation carried forward (LOCF) [index]	35/14(1029)	-	-	-
Unclear	5/1(11)	-0.32	-1.77 to 1.11	0.65
Study funding source				
Governmental or non-profit [index]	13/5(154)	-	-	-
Industry	27/10(886)	0.56	-0.24 to 1.37	0.17
Sample size at baseline				
	40/15 (1040)	-0.17	-0.38 to 0.02	0.08
Baseline severity of symptoms				
	40/15 (1040)	0.001	-0.004 to 0.006	0.65

o, number of outcome measures; k, number of studies; n, sample size; SMD, standardized mean difference; GAD, generalized anxiety disorder; PTSD, post-traumatic stress disorder; SAD, social anxiety disorder; OCD, obsessive-compulsive disorder.

SITable K: Risk of bias in included studies

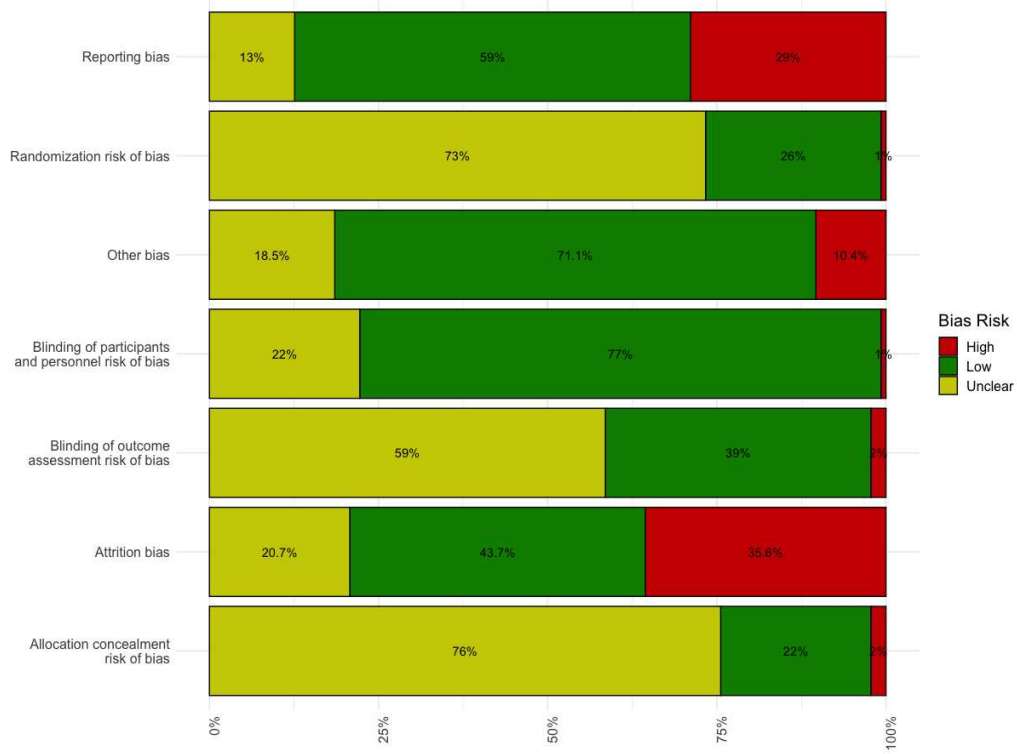
Id	Author	Randomization risk of bias	Allocation concealment risk of bias	Blinding of participants and personnel risk of bias	Blinding of outcome assessment risk of bias	Attrition risk of bias	Reporting risk of bias	Other risk of bias
JF10	Allgulander	low	high	low	low	high	unclear	unclear
JF11	Allgulander C.	low	unclear	low	low	low	low	low
JF15	Asakura S.	unclear	unclear	low	unclear	low	low	low
JF16	Asnis	unclear	unclear	low	unclear	low	low	low
JF20	Bakker	unclear	unclear	low	unclear	low	low	low
JF22	Baldwin	low	unclear	low	unclear	low	low	low
JF25	Baldwin D.	unclear	unclear	low	unclear	low	low	low
JF28	Ballenger	unclear	unclear	low	unclear	low	low	low
JF29	Bandelow	low	low	low	low	low	low	low
JF3	Alaka	low	high	low	unclear	unclear	unclear	low
JF34	Beidel D.C.	unclear	low	low	low	unclear	unclear	unclear
JF42	Birmaher	unclear	unclear	low	low	unclear	low	low
JF45	Black	unclear	unclear	low	low	unclear	low	low
JF56	Bradwejn	unclear	low	low	low	unclear	low	low
JF59	Brady	unclear	low	low	low	unclear	low	low
JF61	Brawman-Mintzer O.	low	low	low	low	unclear	low	low
JF7	Allgulander	unclear	unclear	unclear	unclear	low	low	unclear
JF72	Chouinard	unclear	unclear	low	unclear	unclear	low	low
JF78	Connor K.M.	unclear	low	low	unclear	unclear	low	low
JF80	Coric	unclear	unclear	low	unclear	unclear	low	low
JF82	Da Costa	unclear	unclear	low	unclear	unclear	low	low
JF83	Dahl	unclear	unclear	low	unclear	unclear	unclear	low
JF87	Davidson	unclear	unclear	low	unclear	unclear	unclear	low

JF88	Davidson	unclear	unclear	low	unclear	unclear	unclear	low
JF89	Davidson	unclear	unclear	low	unclear	high	low	low
JF9	Koponen	low	unclear	low	unclear	high	high	low
JF94	Asakura S.	low	high	low	unclear	low	low	low
LM10	Den Boer	unclear	unclear	unclear	unclear	low	high	unclear
LM23	Fani N.	unclear	unclear	unclear	high	low	low	low
LM24	Fani N.	unclear	unclear	unclear	high	low	low	low
LM34	Friedman M.J.	unclear	low	low	unclear	low	low	low
LM37	Gelenberg	low	low	unclear	unclear	low	high	low
LM39	Geller D.A.	unclear	unclear	unclear	unclear	low	low	low
LM4	Davidson J.	low	low	unclear	unclear	low	low	unclear
LM40	Geller D.A.	low	low	unclear	unclear	low	high	low
LM42	Gimenez M.	unclear	unclear	unclear	unclear	low	high	high
LM48	Goodman W.K.	unclear	unclear	unclear	unclear	low	high	high
LM5	Davidson J.R.T.	low	low	high	high	low	low	low
LM50	Greist	unclear	unclear	unclear	unclear	low	high	high
LM54	Hartford	unclear	unclear	unclear	unclear	low	low	low
LM57	Hertzberg	unclear	unclear	unclear	unclear	low	unclear	unclear
LM59	Hoehn-Saric	unclear	unclear	unclear	unclear	high	high	high
LM6	Davidson J.R.T.	unclear	low	unclear	unclear	low	high	unclear
LM60	Hollander	unclear	unclear	unclear	unclear	high	low	low
LM67	Jenike	unclear	unclear	unclear	unclear	low	low	low
LM69	Jenike M.A.	unclear	unclear	low	low	high	low	low
LM71	Kamijima K.	unclear	unclear	unclear	unclear	high	high	high
LM72	Kasper	low	unclear	unclear	unclear	low	low	low
LM73	Kasper	unclear	unclear	unclear	unclear	unclear	high	unclear
LM74	Kasper S.	low	low	low	low	low	low	low
LM76	Katzelnick D.J.	unclear	unclear	unclear	unclear	high	high	low
LM86	Koszycki	low	low	low	low	low	low	unclear

LM95	Li	low	low	low	low	low	low	low
MC1	Ledley	unclear	unclear	low	low	high	high	low
MC10	Lepola	unclear	unclear	low	low	high	high	low
MC12	Liebowitz	unclear	unclear	low	low	low	low	low
MC13	Liebowitz	unclear	unclear	low	low	low	low	low
MC14	Liebowitz	unclear	unclear	low	low	low	high	high
MC15	Liebowitz	unclear	unclear	low	low	low	low	high
MC16	Liebowitz	unclear	unclear	low	low	low	low	low
MC17	Liebowitz M.R.	unclear	unclear	low	low	high	high	low
MC2	Leinonen	unclear	unclear	low	low	high	high	low
MC20a	Londborg P.D.	low	unclear	low	low	low	high	high
MC20b	Londborg P.D.	low	unclear	low	low	low	high	high
MC22	Mahableshwarkar	low	unclear	low	low	high	high	high
MC25	March	low	low	low	low	low	low	low
MC26	March	low	low	low	low	high	low	low
MC28	March J.S.	low	low	low	low	high	low	low
MC3	Lenox-Smith	low	low	low	low	high	high	low
MC31	Marshall	unclear	unclear	low	low	low	low	low
MC32	Marshall	unclear	unclear	low	low	high	low	low
MC33	Martenyi	unclear	unclear	low	low	high	low	low
MC34	Martenyi	unclear	low	low	low	low	low	low
MC38	Merideth	low	unclear	low	low	high	low	low
MC39	Michelson	unclear	unclear	low	low	unclear	high	low
MC4	Lenze	low	low	low	low	high	high	low
MC40	Michelson D.	unclear	unclear	low	low	high	low	low
MC42	Montgomery	unclear	unclear	low	low	low	low	low
MC44	Montgomery	unclear	unclear	low	low	high	low	low
MC45	Montgomery	unclear	unclear	low	low	low	low	low
MC51	Nair	unclear	unclear	low	low	low	high	low

MC55	Nicolini	low	low	low	low	high	high	low
MC56	Nimatoudis I.	unclear	unclear	low	low	low	low	high
MC6	Lenze	low	low	low	low	low	low	low
MC62	Panahi	unclear	low	low	low	high	low	low
MC73	Pollack	unclear	unclear	low	low	high	low	low
MC77	Pollack	unclear	unclear	low	low	low	high	low
MC79	Pollack	unclear	unclear	low	low	high	low	low
MC81	Pollack	unclear	unclear	low	low	high	low	low
MC82	Pollack M.H.	unclear	unclear	low	low	low	low	low
MJ1	Rickels	unclear	unclear	low	unclear	high	high	unclear
MJ14	Rynn	unclear	unclear	low	unclear	high	low	low
MJ16	Rynn M.A.	unclear	unclear	low	unclear	high	low	low
MJ17	Sandmann J.	unclear	unclear	low	unclear	high	high	low
MJ2	Rickels	unclear	unclear	low	low	high	low	low
MJ22	Sharp D.M.	unclear	unclear	low	unclear	low	high	low
MJ25	Sheehan	unclear	unclear	low	unclear	high	low	low
MJ3	Rickels K.	unclear	unclear	low	unclear	low	low	low
MJ36	Stahl	unclear	unclear	low	unclear	low	low	low
MJ4	Riddle	unclear	unclear	low	low	high	high	high
MJ42	Stein	low	unclear	low	unclear	high	high	low
MJ44	Stein	low	low	low	unclear	low	low	low
MJ5	Riddle M.A.	unclear	unclear	low	unclear	high	low	low
MJ53	Stein M.B.	unclear	unclear	low	unclear	low	high	unclear
MJ54	Stein M.B.	low	low	low	unclear	high	low	low
MJ56	Strawn	unclear	low	low	unclear	low	low	low
MJ6	Robb A.S.	unclear	unclear	low	unclear	high	low	low
MJ64	Tucker	unclear	unclear	low	unclear	unclear	low	low
MJ66	Tucker P.	unclear	unclear	low	unclear	low	low	low
MJ70	Van Ameringen M.A.	unclear	unclear	low	unclear	high	high	low

MJ71	Van Der Kolk	low	unclear	low	unclear	high	high	unclear
MJ73	Van Vliet I.M.	unclear	unclear	low	unclear	high	high	unclear
MJ77	Wade	unclear	unclear	low	unclear	low	high	unclear
MJ78	Wagner	low	unclear	low	unclear	high	low	low
MJ79	Walkup	low	low	low	unclear	high	low	high
MJ80	Walkup	unclear	unclear	low	unclear	high	high	unclear
MJ84	Westenberg	unclear	unclear	low	unclear	high	low	low
MJ85	Westenberg	unclear	unclear	low	unclear	high	high	unclear
MJ89	Wu	unclear	unclear	low	unclear	high	low	low
MJ93	Zohar	unclear	unclear	low	unclear	low	low	low
MJ94	Zohar	unclear	unclear	low	unclear	high	low	low
MJ96	Stein D.J.	low	low	low	unclear	low	high	low
MJ97	Jenike	high	high	low	unclear	high	low	high
UNG1	unknown	unclear	unclear	low	unclear	unclear	unclear	low
UNG10	unknown	unclear	unclear	unclear	unclear	unclear	unclear	unclear
UNG11	unknown	unclear	unclear	unclear	unclear	unclear	unclear	unclear
UNG12	unknown	unclear	unclear	unclear	unclear	unclear	unclear	unclear
UNG17	unknown	unclear	unclear	unclear	unclear	unclear	unclear	unclear
UNG2	unknown	unclear	unclear	low	unclear	unclear	unclear	low
UNG3	unknown	unclear	unclear	unclear	unclear	unclear	unclear	unclear
UNG6	Hewett	unclear	unclear	unclear	unclear	unclear	unclear	unclear
UNG7	unknown	unclear	unclear	unclear	unclear	unclear	unclear	unclear
UNG8	Sonne	low	unclear	unclear	unclear	unclear	unclear	unclear
UNG9	unknown	unclear	unclear	unclear	unclear	unclear	unclear	unclear
UPD3	Liebowitz MR	unclear	unclear	low	low	low	low	unclear
UPD8	Strawn JR	low	low	low	low	low	low	low

S1 Fig. B: Risk of bias summary

S1 Fig. C: Funnel plot for all symptoms