

UNIVERSIDADE FEDERAL DO RIO GRANDE DO SUL
INSTITUTO DE CIÊNCIAS BÁSICAS DA SAÚDE
CURSO DE GRADUAÇÃO EM BIOMEDICINA

FERNANDA STAPENHORST FRANÇA

**Metabolismo energético e sensibilidade a drogas antimetabólicas em linhagens de câncer
de pulmão de não-pequenas células**

Porto Alegre

Julho 2013

FERNANDA STAPENHORST FRANÇA

**Metabolismo energético e sensibilidade a drogas antimetabólicas em linhagens de câncer
de pulmão de não-pequenas células**

Trabalho de conclusão de curso de graduação
apresentado ao Instituto de Ciências Básicas da
Saúde da Universidade Federal do Rio Grande
do Sul, como requisito parcial para obtenção do
título de Bacharela em Biomedicina.

Orientador: Prof. Dr. Fábio Klamt

Co-orientador: Me. Leonardo Lisboa da Motta

Porto Alegre

Julho 2013

Esse trabalho foi desenvolvido no Laboratório de Bioquímica Celular (24), do Departamento de Bioquímica (ICBS/UFRGS) durante os meses de janeiro a julho e obteve financiamento dos editais MCT/CNPq Universal (470306/2011-4), PRONEX/FAPERGS (1000274), PRONEM/FAPERGS (11/2032-5), PqG/FAPERGS (2414-2551/12-8) e MCT/CNPq INCT-TM (573671/2008-7). A autora recebeu bolsa PROBIC FAPERGS durante o seu desenvolvimento.

ÍNDICE

RESUMO	5
1. INTRODUÇÃO	7
1.1 Câncer de pulmão.....	7
1.2 Reprogramação metabólica	8
1.2.1 Efeito Warburg.....	8
1.2.2 Outras vias alteradas	9
1.3 Antimetabólitos	11
2 ARTIGO CIENTÍFICO	14
3 CONCLUSÃO E PERSPECTIVAS	38
REFERÊNCIAS.....	39
Regras de Formatação da Revista Molecular Oncology	42

RESUMO

O câncer de pulmão é a neoplasia maligna mais insidiosa da oncologia, sendo responsável pelo maior número de mortes relacionadas ao câncer no mundo. Oitenta e cinco por cento dos casos de câncer de pulmão são de não-pequenas células (CPNPC), e sua terapêutica consiste em ressecção cirúrgica para pacientes em estágios iniciais e quimioterapia/radioterapia para pacientes em estágios avançados. Apesar dos progressos nas pesquisas em câncer, o prognóstico de pacientes em estágios avançados permanece ruim, portanto faz-se necessária o desenvolvimento de novas abordagens terapêuticas. Sabe-se que tumores sólidos apresentam metabolismo energético aberrante, com alto consumo de glicose e liberação de lactato mesmo na presença de oxigênio, o chamado Efeito Warburg. Além disso, esse processo envolve diversas rotas metabólicas, e é conhecido como reprogramação do metabolismo. A superexpressão de diferentes isoformas de enzimas-chave é o principal mecanismo regulatório, e esse fenômeno, por ser único em tumores, parece ser um alvo mais estável e seletivo para terapia. Dessa forma, o objetivo desse trabalho é estabelecer o perfil metabólico das linhagens de CPNPC, A549 e H460, assim como de uma linhagem de epitélio pulmonar BEAS-2B, relacionando com a sensibilidade a antimetabólitos e sua expressão gênica. Foi observado que ambas as linhagens tumorais apresentam alta liberação de lactato e acidificação do meio, em especial a H460. Também foi analisado o perfil de respiração dessas linhagens, onde ambas apresentaram uma alta reserva respiratória quando comparadas com a BEAS-2B, principalmente a A549. Ainda, as células tumorais foram tratadas com 4 antimetabólitos, 2-deoxiglicose, 3-bromopiruvato, floretina e alfa-ciano-4-hidroxicinamato, e se observou uma seletividade dessas drogas para a linhagem H460. A análise da expressão gênica demonstrou um enriquecimento das vias glicolíticas nas linhagens tumorais quando comparadas com a BEAS-2B, assim como um enriquecimento de isoformas Warburg. Por fim, foi validada a relevância clínica desses resultados com a observação do enriquecimento

de isoformas Warburg em biópsias de CPNPC em comparação com biópsias de tecidos saudáveis e em biópsias de adenocarcinoma de pacientes mortos em comparação com biópsias de adenocarcinoma de pacientes vivos. Nossos dados demonstram a relevância clínica das isoformas Warburg e essas análises podem, portanto, estabelecer novos alvos moleculares para futuros estudos na terapia de CPNPC.

1. INTRODUÇÃO

1.1 Câncer de pulmão

O câncer é um sério problema de saúde pública da atualidade. Devido ao crescente envelhecimento da população, apesar dos notáveis avanços das pesquisas e do progresso em relação a sua incidência, hoje estima-se que uma em cada três mulheres e um em cada dois homens nos Estados Unidos irão desenvolver a doença durante suas vidas (Siegel et al., 2012). O câncer de pulmão é o tipo mais comum, de forma a apresentar altos números de casos estimados e ser a causa mais frequente de morte por câncer, representando 18,2% das mortes totais. Ainda, 55% dos casos de câncer de pulmão ocorrem em países em desenvolvimento (Ferlay et al., 2010), visto que a diferença de incidência entre países apresenta uma relação direta com a proporção de fumantes entre a população. O tabagismo é a causa de 80% dos casos de câncer de pulmão em homens e de pelo menos 50% dos casos em mulheres (Jemal et al., 2011). Aproximadamente 85% dos cânceres de pulmão são de não-pequenas células (CPNPC) e apesar dos avanços nos tratamentos quimioterápicos, o prognóstico permanece ruim, já que a maioria dos casos é diagnosticado em estágios avançados, em vista dos estágios iniciais serem assintomáticos (Siegel et al., 2012). O tratamento utilizado em pacientes de CPNPC é baseado no estadiamento clínico da doença, de forma que 71% dos pacientes em estágio inicial sofrem rescisão cirúrgica, enquanto que pacientes em estágio avançado utilizam quimioterapia, radioterapia ou uma combinação destes dois tratamentos (Siegel et al., 2012). Entretanto, a quimioterapia consiste em drogas que agem sistemicamente, de forma pouco seletiva e, assim, agem tanto no tumor como nas células saudáveis. Dessa forma, as drogas devem ser administradas em doses subótimas, de modo a tentar minimizar os efeitos colaterais nos pacientes (López-Lázaro, 2010).

Desde o começo do século XX, o câncer é visto como uma doença genética, sendo resultado de alterações cromossômicas. Somente nos anos 1980 foram descritos os primeiros oncogenes e genes supressores de tumor, e a partir disso surgiu a hipótese de que mutações nesses genes poderiam ser a causa do câncer (López-Lázaro, 2010). Baseado nisso, por muito tempo, o foco de muitos estudos foi a terapia gênica como tratamento para o câncer. Entretanto, as alterações genéticas envolvidas nesse processo são muito numerosas e instáveis, além de abrangerem não só mutações gênicas, mas também alterações epigenéticas (Folkman et al., 2000). Dessa forma, faz-se necessária uma nova abordagem no tratamento do câncer, tendo em vista um alvo mais estável e mais confiável.

1.2 Reprogramação metabólica

1.2.1 Efeito Warburg

Em tecidos diferenciados, na presença de oxigênio, a maioria das células metaboliza glicose formando piruvato, o qual é transportado para mitocôndria e oxidado, de forma a gerar dióxido de carbono e, ao alimentar a cadeia respiratória, maximizar a produção de ATP. Já na ausência de oxigênio, o piruvato proveniente da glicose é convertido em lactato (Vander Heiden et al., 2009). Esse é o chamado Efeito Pasteur, no qual Louis Pasteur observou, em 1861, que as leveduras utilizavam glicose muito mais rapidamente na ausência de oxigênio (Racker, 1974). Entretanto, em 1926, Otto Warburg observou que células cancerígenas apresentavam metabolismo energético aberrante, diferente do que observado por Pasteur em tecidos saudáveis. Segundo Warburg, células tumorais tendem a converter glicose em lactato mesmo na presença de oxigênio, fenômeno o qual chamou de “glicólise aeróbica” (Warburg, 1956).

Embora Otto Warburg estivesse errado em sua hipótese de que o motivo pelo qual tumores utilizam glicólise aeróbica ser devido a células cancerígenas apresentarem disfunção

mitocondrial, seus achados são de extrema importância, e hoje apresentam alta relevância clínica. Uma importante aplicação prática dos estudos de Warburg é o uso da tomografia por emissão de pósitrons (PET) utilizando o análogo de glicose 2-deoxi-2-(¹⁸F)flúor-D-glicose (FdG). Essa técnica permite a detecção de cânceres primários e metastáticos devido ao aumento de captação de glicose em células tumorais (Gatenby and Gillies, 2004). Além disso, o uso de FdG/PET permite a quantificação da captação de glicose, e foi observada uma relação de pior prognóstico e maior agressividade tumoral com o aumento da captação de glicose (Mochiki et al., 2004). Esse resultado também foi observado em linhagens celulares de câncer de mama (Gatenby and Gillies, 2004).

Por muito tempo, este fenômeno não foi compreendido, visto que não se via uma verdadeira vantagem em produzir apenas 4 mol de ATP por mol de glicose pela glicólise aeróbica, enquanto que a fosforilação oxidativa gera aproximadamente 36 mol de ATP por mol de glicose. Entretanto, células tumorais adquirem uma vantagem evolutiva ao reprogramar seu metabolismo para responder ao estresse ambiental. Ainda, esse processo permite um aumento na proliferação celular, visto que tumores necessitam do esqueleto de carbono proveniente da glicose e outros intermediários para suprir sua alta taxa biossintética (Gatenby and Gillies, 2004; López-Lázaro, 2010; Tennant et al., 2010).

1.2.2 Outras vias alteradas

O destino da glicose dentro da célula pode variar em células tumorais em comparação ao tecido normal, assim como pode variar em diferentes estágios do câncer (Herling et al., 2011), de forma que a reprogramação metabólica envolve não só a glicólise, mas diversas outras vias. Esse processo é regulado por alterações de enzimas-chave de cada via, principalmente por substituições por diferentes isoformas (Tennant et al., 2010).

Na glicólise, dentre as isoformas importantes superexpressas em câncer, destacam-se os transportadores de glicose GLUT1 (Kunkel et al., 2003) e GLUT3. As evidências da importância da regulação desses transportadores corroboram com o fato de que essas isoformas são expressas fisiologicamente em tecidos que necessitam mais de glicose, como o cérebro (Scheepers et al., 2004). Além disso, já está bem descrita a superexpressão da enzima hexoquinase 2 (HK-2) em tecidos cancerígenos (Mathupala et al., 2010), assim como a preferência desses tecidos pelas isoformas M2 da piruvato quinase (PKM-2), frutose-2,6-bifosfatase 3 (PFKFB-3), aldolase-C (ALDC) e fosfoglicerato cinase-1 (PGK-1) (Herling et al., 2011)

A via das pentoses é uma rota importante na reprogramação metabólica, visto que ocorre produção de NADPH, necessário na síntese de lipídeos e nucleotídeos, assim como no balanço redox intracelular; e ribose-5-fosfato (R5P), importante na síntese de nucleotídeos. Dessa forma, a enzima glicose-6-fosfato desidrogenase tem um papel significativo por desviar a glicose-6-fosfato da glicólise para a via das pentoses. Ainda, foi observado que a isoforma transcetolase-like 1 (TKTL-1) está superexpressa em diversos tumores (Langbein et al., 2006), assim como a isoforma da enzima transaldolase-1 (TALDO-1) (Herling et al., 2011).

Desde 1951, sabe-se que o metabolismo de lipídeos está aumentado em tumores (Tennant et al., 2010). Na síntese de ácidos graxos, o citrato proveniente do ciclo de Krebs, ao ser exportado da mitocôndria, é convertido à acetil-CoA pela enzima ATP citrato liase (ACLY). O acetil-CoA é então convertido a malonil-CoA pela acetil-CoA carboxilase (ACC), e este é o substrato para a enzima-chave ácido graxo sintase (FASN). Esta enzima apresenta-se de forma importante na reprogramação metabólica, visto que já foi observado aumento de sua expressão em câncer colorretal (Rashid et al., 1997).

Igualmente importante é o metabolismo do piruvato, visto que seu destino determina a utilização pela mitocôndria ou a produção de lactato. Pela ação da piruvato desidrogenase

(PDH), ocorre sua conversão em acetil-CoA. Este processo é controlado pela enzima piruvato desidrogenase quinase 1 (PDK1), a qual bloqueia a atividade da PDH. Além disso, outra enzima essencial nesse processo é a lactato desidrogenase A (LDHA), a qual converte piruvato em lactato (Koukourakis et al., 2005). Ainda, com a alta produção de lactato, para manter o fluxo glicolítico e o pH fisiológico intracelular, células tumorais apresentam superexpressão de reguladores de pH, como os transportadores de monocarboxilatos (MCT), em especial a isoforma MCT-4 (Izumi et al., 2003).

O ciclo de Krebs em células cancerígenas pode favorecer a carboxilação redutiva em detrimento do metabolismo oxidativo. Isso ocorre pois, com a entrada de glutamina, esta pode entrar no ciclo de Krebs como α -cetoglutarato e sofrer carboxilação redutiva, formando isocitrato pela ação da enzima isocitrato desidrogenase (IDH), que atuará no sentido reverso do ciclo de Krebs (Yoo et al., 2008). Isto pode ser uma forma de produção de citrato e ácidos graxos através da glutamina, favorecendo a biossíntese (Ward and Thompson, 2013). Entretanto, não se sabe se esse processo ocorre através da isoforma citosólica IDH1 ou mitocondrial IDH2. Ainda, foram observadas formas alteradas dessas enzimas capazes de reduzir α -cetoglutarato a 2-hidroxiglutarato (2-HG), cuja expressão está relacionada com a carcinogênese (Ward and Thompson, 2013).

Como o metabolismo energético aberrante é uma característica única dos tumores, o foco em vias metabólicas alteradas em células cancerígenas e, ainda mais importante, nas alterações enzimáticas que ocorrem durante a reprogramação metabólica, apresentam-se como novas e potenciais estratégias terapêuticas (López-Lázaro, 2010).

1.3 Antimetabólitos

Por dependerem da via da glicólise para gerar ATP, células tumorais necessitam da manutenção dessa via para sobreviver e proliferar. Dessa forma, a inibição da glicólise vem

sendo estudada como um alvo terapêutico (Figura 1). A 2-desoxiglicose (2-DG), um análogo de glicose, é um composto que age como inibidor competitivo na via glicolítica. Ao ser absorvida, a 2-DG é fosforilada pela hexocinase e, ao contrário da glicose-6-fosfato, não pode mais ser metabolizada, acumulando dentro da célula e inibindo a glicólise (Pelicano et al., 2006). Este composto não apresentou efeito significativo no crescimento tumoral como monoterapia, mas pode sensibilizar os tumores a terapias convencionais por reduzir os níveis de ATP (Tennant et al., 2010). O 3-bromopiruvato (3BP) é um outro inibidor da hexocinase, sendo muito estudado como um possível tratamento anticâncer. Entretanto, o composto também inibe a hexocinase mitocondrial, bloqueando a respiração pela mitocôndria (Y H Ko et al., 2001). Ainda, a captação de glicose é um possível alvo terapêutico por inibição do GLUT através do uso da floretina, a qual já foi demonstrado ser capaz de induzir apoptose *in vivo* e *in vitro* em hepatomas humano (C.-H. Wu et al., 2009). Por fim, com a superexpressão dos transportadores de monocarboxilatos e a dependência da secreção de lactato apresentados em células tumorais, um possível composto terapêutico é o alfa-ciano-4-hidroxicinamato (CHC), inibidor de MCTs 1, 2 e 4 (Kumar et al., 2013), que já foi demonstrado ser capaz de diminuir o tamanho de tumores (Sonveaux et al., 2008b).

Dessa forma, faz-se necessário o estabelecimento da relação entre a expressão de determinadas isoformas com a sensibilidade a antimetabólitos. O objetivo desse trabalho é, portanto, estabelecer um perfil metabólico de diferentes tipos de câncer através de um painel de dados bioquímicos e de expressão gênica, buscando uma assinatura metabólica que justifique a sensibilidade de cada linhagem celular às drogas testadas. Ainda, a partir de dados de expressão gênica, é possível sugerir alvos específicos superexpressos durante a carcinogênese, podendo ser associados a uma nova estratégia terapêutica mais seletiva e eficaz.

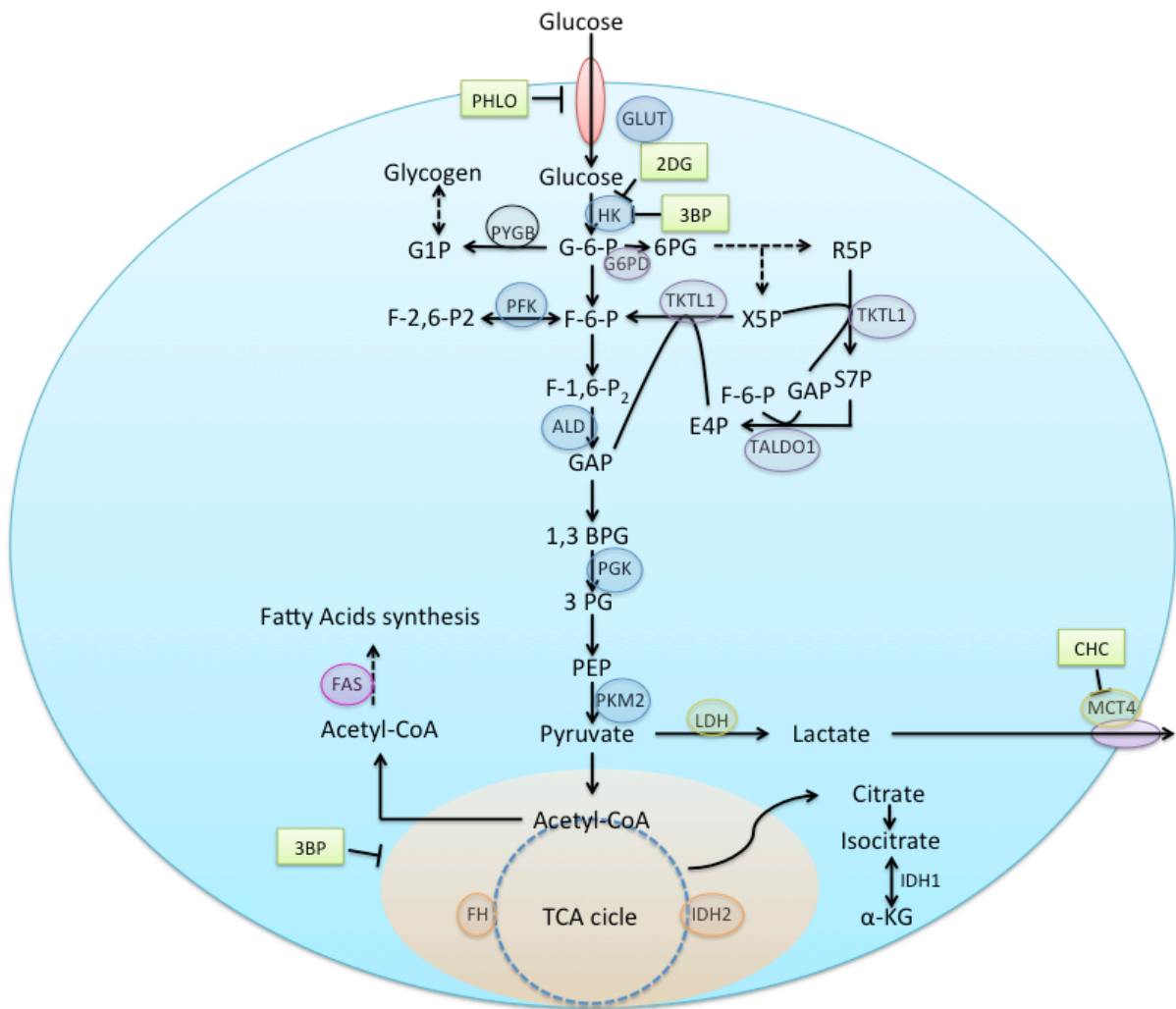


Figura 1: Rotas bioenergéticas envolvidas na reprogramação metabólica. Enzimas-chave estão representadas em círculos de diferentes cores, onde: azul = glicólise; preto = metabolismo do glicogênio; roxo = via das pentoses; amarelo = metabolismo do piruvato; rosa = síntese de ácidos graxos; laranja = ciclo de Krebs. Quadrados verdes representam anti-metabólitos em testes clínicos. Abreviações: Phlo = floretina; 2-DG = 2-desoxiglicose; 3BP = 3-bromopiruvato; CHC = alfa-ciano-4-hidroxicinamato; GLUT = transportador de glicose; HK = hexocinase; PFK = fosfofrutocinase; ALD = aldolase; PGK = fosfoglicerato cinase; PKM2 = piruvato cinase-M2; PYGB = glicogênio fosforilase; G6PD = glicose-6-fosfato desidrogenase; TKTL1 = transcetolase-like 1; TALDO1 = Transaldolase-1; LDH = lactato desidrogenase; MCT4 = transportador de monocarboxilatos 4; FH = fumarato hidratase; IDH = isocitrato desidrogenase; FAS = ácido graxo sintetase.

2 ARTIGO CIENTÍFICO

Energetic metabolism and sensibility to anti-metabolites in non-small cell lung cancer cell lines

Fernanda Stapenhorst França^{1,2}, Leonardo Lisboa da Motta^{1,2}, Marco A. de Bastiani^{1,2}, Fabio Klamt^{1,2,*}

¹Laboratório de Bioquímica Celular, Departamento de Bioquímica, ICBS/UFRGS, 90035-003 Porto Alegre (RS), Brasil;

²Instituto Nacional de Ciência e Tecnologia - Translational em Medicina (INCT-TM), 90035-903 Porto Alegre (RS), Brasil;

Corresponding Author: Prof. Fábio Klamt, Ph.D., Department of Biochemistry (ICBS), Federal University of Rio Grande do Sul (UFRGS), 2600 Ramiro Barcelos St, Porto Alegre (RS) Brazil 90035-003. Phone: +55 51 3308-5556; Fax: +55 51 3308-5535; e-mail: 00025267@ufrgs.br

Abstract

Lung cancer is the most common and most lethal type of tumor, and 80% of those are non-small cell lung cancer (NSCLC). Despite the progress on cancer research, the prognosis remains poor for patients with advanced-stage of disease, whose treatment is mostly based on chemotherapy. Current studies and proposed therapies rely on the identification of specific genetic alterations in tumor specimens, the so-called pharmacogenetic approach. In addition, solid tumors present an aberrant metabolism, with high glucose uptake and lactate production even in the presence of oxygen, which is called Warburg Effect. This phenomenon is

controlled by altered enzymes expression, mostly by replacement of different isoforms. Therefore, the gene expression analysis of NSCLC cell lines can reveal new therapeutic targets.

This study aims to associate the gene expression pattern related to energetic metabolic pathways on two NSCLC cell lines, A549 and H460, as well as a non-tumoral cell line, BEAS-2B, with their metabolic profile and sensibility to antimetabolites. In order to establish the metabolic profile of the cell lines, we evaluated the medium acidification, lactate production and respiratory rate (basal, oligomycin-independent and maximum respiration rate). The cancer cell lines were also analyzed by their sensibility to antimetabolites such as 2-deoxyglucose, 3-bromopyruvate, phloretin and α -cyano-4-hydroxycinnamate. In addition, by a bioinformatic approach, we evaluated the expression of glycolytic and oxidative pathways on cell line microarray, as well as the expression of Warburg-related enzymes isoforms. These analyses were also applied to tumor tissue microarray. We observed that the tumoral cell lines present a more glycolytic profile when compared to non-tumoral, and also observed that H460 seems to have a more glycolytic phenotype and A549 a more oxidative phenotype. We also confirmed the clinicopathological significance of these data, since it was observed that tumor tissues upregulate Warburg isoforms, reflecting a poor patient outcome.

Keywords: Non-small cell lung cancer; Antimetabolites; Warburg Effect; Gene Enrichment Analysis

Highlights

A549 and H460 present a glycolytic metabolism when compared to BEAS-2B.

H460 is more glycolytic than A549, and shows specific sensitivity to antimetabolites.

Glycolytic pathways and Warburg isoforms are enriched in cancer cell lines when compared to BEAS-2B.

Warburg isoforms are enriched in tumor tissues when compared to normal lung tissue. Enrichment in Warburg isoforms is also related to poor-prognosis adenocarcinoma.

1. Introduction

Lung cancer is the most common malignant tumor, representing 12.7% of all new cases, and responsible for 18.2% of total deaths (Ferlay et al., 2010). Cigarette smoking is the cause of 80% of worldwide lung cancer in men, and at least 50% in women, and 55% of the disease occur in developing countries (Jemal et al., 2011). Approximately 85% of all lung cancers are non-small cell lung cancer (NSCLC) (Siegel et al., 2012) that can be divided according to the histological type in squamous cell carcinoma, adenocarcinoma, and large-cell carcinoma. For these patients, treatment is determined by disease stage, and surgery remains the main treatment for early-stage. For advanced-stage patients, chemotherapy forms the foundation of their treatment and is critical in determining their survival and quality of life (Ramalingam and Belani, 2008). However, most of the drugs used on chemotherapy is toxic to both tumor and normal cell, and to minimize side effects, they must be administrated in suboptimal levels (López-Lázaro, 2010). This reflects on the poor prognosis for those with distant stage disease, where the 5 years survival rate is 3.6% (Siegel et al., 2012).

Since 1980, when oncogenes and the tumor suppressors genes were discovered, the main focus of several studies and clinical trials has been the cancer treatment by reversing mutations on those genes. Nevertheless, recent analysis carried out in the last decade have shown that those genetic alterations are too numerous and too unstable (López-Lázaro, 2010), and cancer alterations include not only mutations, but epigenetics changes as well (Folkman et al., 2000).

In 1926, Otto Warburg demonstrated that tumor cells have an aberrant energetic metabolism, with high glucose consumption and lactate production, even in the presence of oxygen, and hence this phenomena is referred to as “aerobic glycolysis” (Warburg, 1956). This process can be understood as a selective growth advantage, considering that, in order to proliferate, cells need the carbon building blocks provided by glucose to increase their biosynthetic capacity (Gatenby and Gillies, 2004). As others alterations in cancer cells metabolism have been discovered, the whole process is known to be a reprogramming of metabolism, where tumor cells go through a metabolic shift, enhancing glycolysis to produce energy and others anabolic pathways to synthesize proteins and lipids independently of oxygen availability (Ward and Thompson, 2013). This process is regulated by alterations in key enzymes of several pathways, mainly by overexpression of specific enzyme’s isoform (Herling et al., 2011).

Considering that the aberrant energetic metabolism is a unique feature of tumor cells, the focus on altered metabolic pathways and its regulation during the reprogramming of metabolism seems to be a good therapeutic approach. There are currently several drugs under development and trials targeting those alterations in tumors. One of them, 2-deoxy-D-glucose (2-DG), acts as a glycolysis inhibitor. Once inside the cell, the compound is phosphorylated by hexokinase to 2-DG-P, which cannot be further metabolized by phosphohexose isomerase, and then accumulates in the cell, inhibiting glycolysis (Pelicano et al., 2006). Another glycolysis inhibitor, 3-bromopyruvate (3-BP), inhibits hexokinase, but also inhibits its mitochondrial isoform, causing ATP depletion both by glycolytic metabolism inhibition and mitochondrial respiration inhibition (Y H Ko et al., 2001) (Pereira da Silva et al., 2009). The glucose uptake can also be a potential target, and the anti-metabolite phloretin, a glucose transporter (GLUT) inhibitor, have been shown to induce apoptosis *in vivo* and *in vitro* in human liver cancer cells (C.-H. Wu et al., 2009).

Finally, as several pH regulators are up regulated in tumor cells, such as the monocarboxylate transporters (MCTs), a possible therapeutic compound is α -cyano-4-hydroxycinnamate (CHC), that is known to inhibit MCTs 1, 2 and 4 (Kumar et al., 2013) and has been shown to decrease tumor sizes (Sonveaux et al., 2008a).

2. Materials and Methods

a. Cell culture

The human NSCLC cell lines of adenocarcinoma A549 and large-cell carcinoma H460 (NCI-Frederick Cancer DCTD tumor/cell line repository), as well as the lung epithelium immortalized cell line BEAS-2B (ATCC[®]) were cultured in RPMI-1640 medium containing 2 mM of L-glutamine, 10% of fetal bovine serum (FBS) and antibiotics, buffered at pH 7.4. Cells were maintained in exponential growth in a humidified incubator (5% CO₂, 37°C).

b. Cytotoxicity assay

Cells were seeded in a 96-well plate and, 24 h later, cells were treated with 2-DG, 3-BP, Phloretin, CHC and Tris-Buffer (Sigma- Aldrich) at different concentrations. At the end of incubation time (72 h), the percentage of proliferation was evaluated by the sulforhodamine B assay (SRB) as described previously (Skehan et al., 1990). Briefly, cells were fixed with trichloroacetic acid 10% and incubated at 4°C for 1 h. The plates were washed five times with distilled water and air-dried. Cell growth was measured by staining with sulforhodamine B dye (0.2% w/v in 1% acetic acid). The unbound dye was washed 3–5 times with 1% acetic acid and plates were air-dried. The adsorbed dye was dissolved in Tris-Buffer (0.01 M, pH 10.4) and plates were gently shaken for 20 min on a mechanical shaker. The optical

density was recorded using a 96 well plate reader at 490 nm.

c. Oxygen consumption

The baseline oxygen consumption was assessed using high-resolution respirometry (Oroboros Oxygraph-O2k, Austria). Cells were removed from culture dishes through trypsinization and approximately 2×10^6 cells were added to RPMI-1640 FBS-free medium and transferred into the oxygraph. Basal consumption, oligomycin-independent respiration (proton leak) and FCCP-stimulated respiration (maximum respiration) were assessed.

d. Medium acidification

Cells were seeded in a 12-well plate with fresh medium with pH set at 7.4. The medium from each well was removed for pH measurement with a pH meter (Marte) in different times (24, 48, 72 and 96 h).

e. Lactate production

Cell medium was collected at times 0, 1, 2 and 3 h and transferred to a 96-well plate. The medium lactate was assessed using the Lactate assay kit from Labtest.

f. Microarray dataset

The microarray data was extracted from the Gene Expression Omnibus (GEO) repository (<http://www.ncbi.nlm.nih.gov/geo/>). Four datasets of interest were chosen and analyzed: GEO ID: GSE4824; GSE6013; GSE11117; and GSE3141.

g. Enrichment analysis

In order to evaluate enriched pathways in each group of the datasets, we used the Gene

Set Enrichment Analysis (GSEA) (Subramanian et al., 2005). Gene sets were created based on pathways provided by Kyoto Encyclopedia of Genes and Genome (KEGG) (<http://www.genome.jp/kegg/>) and on classical enzyme isoforms up regulated on Warburg-like cancer phenotype.

3. Results

a. Metabolic characterization of cell lines

The culture media have phenol red, a pH indicator, and its color exhibits a gradual transition from red to yellow over the pH range 8.2 and 6.8. We observed that our cell lines presented different patterns in this color shift, where non-tumoral BEAS-2B showed a red medium even after 96 h, whereas A549 medium had an orange shade and H460 presented a fast shift to yellow. Extracellular pH measurement confirmed that tumor cells have a higher medium acidification, especially H460 (Figure 1).

In order to evaluate whether the medium acidification was caused by lactate production, we measured the extracellular lactate. A549 and H460 showed a very similar pattern, with a much higher lactate production comparing with BEAS-2B, where extracellular lactate had a very small range over time (Figure 2).

It was also evaluated how the cells responded to medium buffering, therefore cells were treated with different concentrations of Tris-buffer. Interestingly, the treatment showed a very cytotoxic effect on H460, but not on A549 or BEAS-2B (Figure 3). This represents that H460 depends on the extracellular acidification in order to proliferate.

Analyzing basal oxygen consumption, it is clear that A549 cells have higher oxygen consumption comparing with normal cell line BEAS-2B and with H460 (Figure 4A). Oligomycin-independent respiration appears to be similar between tumor cell lines (Figure 4B). Adding FCCP, maximum respiration is provided. Both tumor cell lines have higher

maximum respiration than BEAS-2B, and A549 have higher maximum respiration when compared with H460. The difference between maximum respiration and basal respiration provides the respiratory reserve capacity. Hence, it is observed that tumor cell lines have higher respiratory capacity than BEAS-2B (Figure 4C). This means that tumor cells use very little of their capacity, which can confirm that they prefer to use a glycolytic pathway rather than an oxidative one, despite being able to use both, while BEAS-2B uses nearly all of its capacity.

b. Cytotoxic effects of anti-metabolites

After establishing a metabolic profile for each cell line, we tested the effects of four anti-metabolic drugs, 2-DG, 3BP, Phloretin and CHC on tumor cell lines and it was established the drug concentration that required to inhibit 50% of cell growth (GI_{50}). It has been observed that H460 presented a more glycolytic metabolism when compared to A549 (M. Wu et al., 2007). Based on that, we established a selectivity index, which shows if the compound is more selective to a Warburg phenotype (H460) or a non-Warburg phenotype (A549) (Table 1). 2-desoxyglucose is the only drug that inhibited both cell lines equally, while the other compounds seem to be more selective to the Warburg cancer cell line. 3-bromopyruvate appears to be nearly 70% more specific to H460, showing significant selectivity to Warburg-phenotype.

c. Gene expression analysis

In order to confirm the data obtained on experimental results, we decided to analyze the gene expression profile of metabolic pathways on our cell lines. Based on microarray data, it was observed that when comparing A549 and BEAS-2B, pyruvate metabolism, glycolysis and pentose phosphate pathways were enriched on A549. Furthermore, comparing H460 with

BEAS-2B, the same pathways were enriched on H460, in addition to the TCA cycle. There were no significant differences when comparing A549 with H460. We then compared the cell lines on the expression of enzymes isoforms presented on Warburg-like phenotype. In both tumor cell lines, this gene set was enriched when compared to BEAS-2B separately, and also when comparing tumor cell lines versus BEAS-2B together (Table 2). These results corroborate with the data found on experimental results, showing both tumor cell lines with similar metabolic profile and BEAS-2B being more oxidative.

The clinicopathological significance of these parameters was investigated using metadata analysis of tumor tissue microarray. We used microarray clinical datasets of NSCLC patients with different histological types. Analysis failed to present significant results on pathway enrichment when comparing different outcomes on the same histological type (data not shown). However, when comparing NSCLC biopsies with control lung biopsies, we observed enrichment on Warburg-like enzymes isoforms on the cancer biopsies. Also, in a different dataset, results presented significant differences on enrichment of Warburg-like isozymes on poor-outcome adenocarcinoma when compared with good-outcome adenocarcinoma (Table 3). These data provided possible targets in therapy, where it is possible to observe that some isoforms analyzed are enriched on most cancer cell lines and tumor tissues (Table 4).

4. Discussion

Despite the increasing progress on science, cancer is still a very lethal disease, and lung cancer is responsible for most of the death on oncology. Current therapies are still inefficient, since the disease mechanisms remain obscure. However, recently the Warburg Effect theory has been brought to light again, and studies on this field are providing a new view on carcinogenesis. In this study, we analyzed the metabolic profile of three cell lines,

where two of them are tumoral. Based on our results, it is observed that H460 has the highest extracellular acidification, and also a dependence on it to proliferate. On the other hand, A549 showed almost the same rate of lactate production than H460, even though it has lower medium acidification. Also, A549 presents higher basal and maximum respiration, as well as higher reserve capacity. Both cell lines, when compared to non-tumoral BEAS-2B, showed a more glycolytic metabolism, accordingly to the Warburg Effect. The gene enrichment from glycolytic pathways and Warburg isoforms on both cell lines when compared to BEAS-2B confirmed these hypothesis, showing that the reprogramming of metabolism can be a selective target for therapy. There are several studies demonstrating intratumor heterogeneity (Endesfelder et al., 2012), and the evidence that there are differences in metabolism even among different cancer cells supports the idea of personalized therapy, where anti-metabolites will be more effective on tumor cells that present a more glycolytic metabolism. Our results corroborate with this idea, since when the cancer cell lines were tested against anti-metabolites, most of them were selective to H460. This also confirms the hypothesis that H460 presents a more glycolytic metabolism than A549.

Our results have also shown to have clinical relevance, as it was observed that lung tumor biopsies presented gene enrichment of Warburg isoforms when compared to normal lung biopsies. In addition, lung tumor biopsies of low survival rate patients presented enrichment of Warburg isoforms when compared to high survival rate patients' biopsies. The compilation of enriched isoforms in all analyses presented on Table 4 provides evidence on isoforms related to poor-prognosis, for those enriched on dead adenocarcinoma patients, and carcinogenesis, for those enriched on NSCLC when compared to normal tissue, as well as on the tumoral cell lines when compared to BEAS-2B. Also, IDH1, LDHA and PYGB were enriched in all analyses, showing that there is a strong relation between their expression with carcinogenesis and poor-outcome, therefore being good therapeutic targets. Indeed, inhibition

of LDHA has been shown to inhibit tumor progression (Le et al., 2010), whereas there are studies on PYGB as a cancer biomarker (Tashima et al., 2000).

More studies are necessary to reveal targets that can really be used on clinics. However, identifying these potential targets is already a big step on cancer therapy, since the altered metabolism in tumor appears to be a more stable therapeutic approach.

5. Conclusion

In summary, our results point out metabolic differences in cancer cell lines, suggesting a personalized therapy with drugs that have shown to be more selective for glycolytic tumors. Furthermore, we demonstrated the enrichment of cancer cell lines of glycolytic pathways when compared with non-tumoral cell line, as well as enrichment of Warburg isoforms. Finally, these data together with clinicopathological analysis on Warburg isoforms enrichment, it is observed isoforms related both to carcinogenesis and poor-prognosis. Therefore, metabolic isoforms are revealed as new therapeutic targets.

References

- Endesfelder, D., Math, D., Gronroos, E., Ph, D., Martinez, P., Matthews, N., Sc, B., Stewart, A., Sc, M., Tarpey, P., Varela, I., Phillimore, B., Begum, S., Mcdonald, N.Q., Butler, A., Jones, D., Raine, K., Latimer, C., Santos, C.R., Nohadani, M., Eklund, A.C., Spencersdene, B., Clark, G., Pickering, L., Stamp, G., Gore, M., Szallasi, Z., Downward, J., Futreal, P.A., Swanton, C., 2012. Intratumor Heterogeneity and Branched Evolution Revealed by Multiregion Sequencing.
- Ferlay, J., Shin, H.-R., Bray, F., Forman, D., Mathers, C., Parkin, D.M., 2010. Estimates of worldwide burden of cancer in 2008: GLOBOCAN 2008. *International journal of cancer. Journal international du cancer* 127, 2893–917.
- Folkman, J., Hahnfeltd, P., Hlatky, L., 2000. Cancer: looking outside the genome. *Nature reviews. Molecular cell biology* 1, 76–9.
- Gatenby, R. a, Gillies, R.J., 2004. Why do cancers have high aerobic glycolysis? *Nature reviews. Cancer* 4, 891–9.
- Herling, A., König, M., Bulik, S., Holzhütter, H.-G., 2011. Enzymatic features of the glucose metabolism in tumor cells. *The FEBS journal* 278, 2436–59.
- Izumi, H., Torigoe, T., Ishiguchi, H., Uramoto, H., Yoshida, Y., Tanabe, M., Ise, T., Murakami, T., Yoshida, T., Nomoto, M., Kohno, K., 2003. Cellular pH regulators: potentially promising molecular targets for cancer chemotherapy. *Cancer Treatment Reviews* 29, 541–549.
- Jemal, A., Bray, F., Ferlay, J., 2011. *Global Cancer Statistics* 61, 69–90.
- Ko, Y H, Pedersen, P L, Geschwind, J.F., 2001. Glucose catabolism in the rabbit VX2 tumor model for liver cancer: characterization and targeting hexokinase. *Cancer letters* 173, 83–91.
- Koukourakis, M.I., Giatromanolaki, A., Sivridis, E., Gatter, K.C., Harris, A.L., 2005. Pyruvate Dehydrogenase and Pyruvate Dehydrogenase Kinase Expression in Non Small Cell Lung Cancer and Tumor-Associated Stroma. *Neoplasia* 7, 1–6.
- Kumar, A., Kant, S., Singh, S.M., 2013. α -Cyano-4-hydroxycinnamate induces apoptosis in Dalton's lymphoma cells: role of altered cell survival-regulatory mechanisms. *Anti-cancer drugs* 24, 158–71.
- Kunkel, M., Reichert, T.E., Benz, P., Lehr, H.-A., Jeong, J.-H., Wieand, S., Bartenstein, P., Wagner, W., Whiteside, T.L., 2003. Overexpression of Glut-1 and increased glucose metabolism in tumors are associated with a poor prognosis in patients with oral squamous cell carcinoma. *Cancer* 97, 1015–24.
- Langbein, S., Zerilli, M., Zur Hausen, a, Staiger, W., Rensch-Boschert, K., Lukan, N., Popa, J., Ternullo, M.P., Steidler, a, Weiss, C., Grobholz, R., Willeke, F., Alken, P., Stassi, G., Schubert, P., Coy, J.F., 2006. Expression of transketolase TKTL1 predicts colon and

- urothelial cancer patient survival: Warburg effect reinterpreted. *British journal of cancer* 94, 578–85.
- Le, A., Cooper, C.R., Gouw, A.M., Dinavahi, R., Maitra, A., Deck, L.M., Royer, R.E., Vander Jagt, D.L., Semenza, G.L., Dang, C. V, 2010. Inhibition of lactate dehydrogenase A induces oxidative stress and inhibits tumor progression. *Proceedings of the National Academy of Sciences of the United States of America* 107, 2037–42.
- López-Lázaro, M., 2010. A new view of carcinogenesis and an alternative approach to cancer therapy. *Molecular medicine (Cambridge, Mass.)* 16, 144–53.
- Mathupala, S.P., Ko, Young H, Pedersen, Peter L, 2010. Hexokinase-2 bound to mitochondria: Cancer’s stygian link to the “Warburg effect” and a pivotal target for effective therapy. *Seminars in cancer biology* 19, 17–24.
- Mochiki, E., Kuwano, H., Katoh, H., Asao, T., Oriuchi, N., Endo, K., 2004. Evaluation of 18F-2-deoxy-2-fluoro-D-glucose positron emission tomography for gastric cancer. *World journal of surgery* 28, 247–53.
- Pelicano, H., Martin, D.S., Xu, R.-H., Huang, P., 2006. Glycolysis inhibition for anticancer treatment. *Oncogene* 25, 4633–46.
- Pereira da Silva, A.P., El-Bacha, T., Kyaw, N., Dos Santos, R.S., da-Silva, W.S., Almeida, F.C.L., Da Poian, A.T., Galina, A., 2009. Inhibition of energy-producing pathways of HepG2 cells by 3-bromopyruvate. *The Biochemical journal* 417, 717–26.
- Racker, E., 1974. History of the Pasteur effect and its pathobiology. *Molecular and cellular biochemistry* 5, 17–23.
- Ramalingam, S., Belani, C., 2008. Systemic chemotherapy for advanced non-small cell lung cancer: recent advances and future directions. *The oncologist* 13 Suppl 1, 5–13.
- Rashid, a, Pizer, E.S., Moga, M., Milgraum, L.Z., Zahurak, M., Pasternack, G.R., Kuhajda, F.P., Hamilton, S.R., 1997. Elevated expression of fatty acid synthase and fatty acid synthetic activity in colorectal neoplasia. *The American journal of pathology* 150, 201–8.
- Scheepers, a, Joost, H., Schurmann, a, 2004. The glucose transporter families SGLT and GLUT: molecular basis of normal and aberrant function. *Journal of Parenteral and Enteral Nutrition* 28, 364–371.
- Siegel, R., Desantis, C., Virgo, K., Stein, K., Mariotto, A., Smith, T., Cooper, D., Gansler, T., Lerro, C., Fedewa, S., 2012. *Cancer Treatment and Survivorship Statistics*, 2012.
- Skehan, P., Storeng, R., Scudiero, D., Monks, A., Vistica, D., Warren, J.T., Bokesch, H., Boyd, M.R., 1990. New Colorimetric Cytotoxicity Assay for 1107–1112.
- Sonveaux, P., Végran, F., Schroeder, T., Wergin, M.C., Verrax, J., Rabbani, Z.N., De Saedeleer, C.J., Kennedy, K.M., Diepart, C., Jordan, B.F., Kelley, M.J., Gallez, B., Wahl, M.L., Feron, O., Dewhirst, M.W., 2008a. Targeting lactate-fueled respiration

- selectively kills hypoxic tumor cells in mice. *The Journal of clinical investigation* 118, 3930–42.
- Sonveaux, P., Végran, F., Schroeder, T., Wergin, M.C., Verrax, J., Rabbani, Z.N., Saedeleer, C.J. De, Kennedy, K.M., Diepart, C., Jordan, B.F., Kelley, M.J., Gallez, B., Wahl, M.L., Feron, O., Dewhirst, M.W., 2008b. Targeting lactate-fueled respiration selectively kills hypoxic tumor cells in mice 118.
- Subramanian, A., Tamayo, P., Mootha, V.K., Mukherjee, S., Ebert, B.L., 2005. Gene set enrichment analysis : A knowledge-based approach for interpreting genome-wide.
- Tashima, S., Shimada, S., Yamaguchi, K., Tsuruta, J., Ogawa, M., 2000. Expression of brain-type glycogen phosphorylase is a potentially novel early biomarker in the carcinogenesis of human colorectal carcinomas. *The American journal of gastroenterology* 95, 255–63.
- Tennant, D. a, Durán, R. V, Gottlieb, E., 2010. Targeting metabolic transformation for cancer therapy. *Nature reviews. Cancer* 10, 267–77.
- Vander Heiden, M.G., Cantley, L.C., Thompson, C.B., 2009. Understanding the Warburg effect: the metabolic requirements of cell proliferation. *Science (New York, N.Y.)* 324, 1029–33.
- Warburg, O., 1956. Injuring of Respiration the Origin of Cancer Cells. *Science* 123.
- Ward, P.S., Thompson, C.B., 2013. Metabolic Reprogramming: A Cancer Hallmark Even Warburg Did Not Anticipate 21, 297–308.
- Wu, C.-H., Ho, Y.-S., Tsai, C.-Y., Wang, Y.-J., Tseng, H., Wei, P.-L., Lee, C.-H., Liu, R.-S., Lin, S.-Y., 2009. In vitro and in vivo study of phloretin-induced apoptosis in human liver cancer cells involving inhibition of type II glucose transporter. *International journal of cancer. Journal international du cancer* 124, 2210–9.
- Wu, M., Neilson, A., Swift, A.L., Moran, R., Tamagnine, J., Parslow, D., Armistead, S., Lemire, K., Orrell, J., Teich, J., Chomicz, S., Ferrick, D. a, 2007. Multiparameter metabolic analysis reveals a close link between attenuated mitochondrial bioenergetic function and enhanced glycolysis dependency in human tumor cells. *American journal of physiology. Cell physiology* 292, C125–36.
- Yoo, H., Antoniewicz, M.R., Stephanopoulos, G., Kelleher, J.K., 2008. Quantifying reductive carboxylation flux of glutamine to lipid in a brown adipocyte cell line. *The Journal of biological chemistry* 283, 20621–7.

Figures/Tables and legends

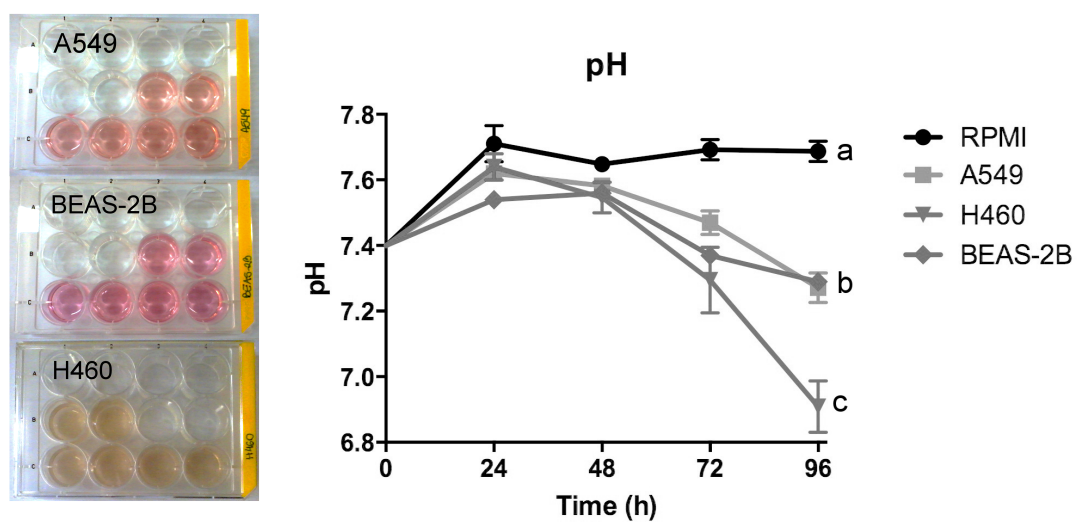


Figure 1: Medium acidification by A549, H460 and BEAS-2B human cell lines. pH of cell culture media was measured with a pH meter after 24, 48, 72 and 96h. Analyses showed significant differences ($p < 0.05$) between the control and the cell lines, as well as between H460 and A549 and BEAS-2B (One-way ANOVA; $n = 3-5$). Inset shows representative A549, BEAS-2B and H460 cultures after 96h.

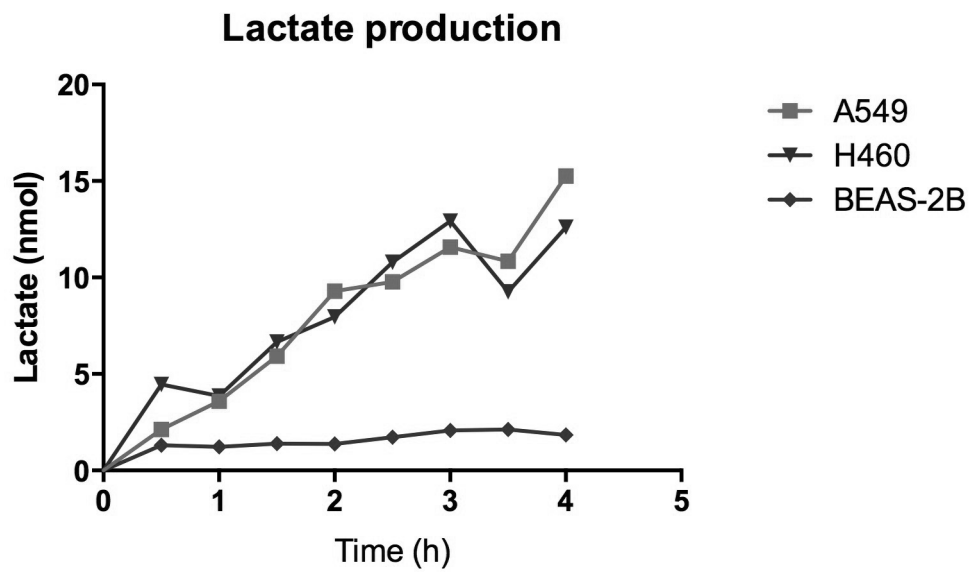


Figure 2: Lactate production by A549, H460 and BEAS-2B. Lactate concentration was enzymatically measured in cultures supernatant for 4h. (n = 1).

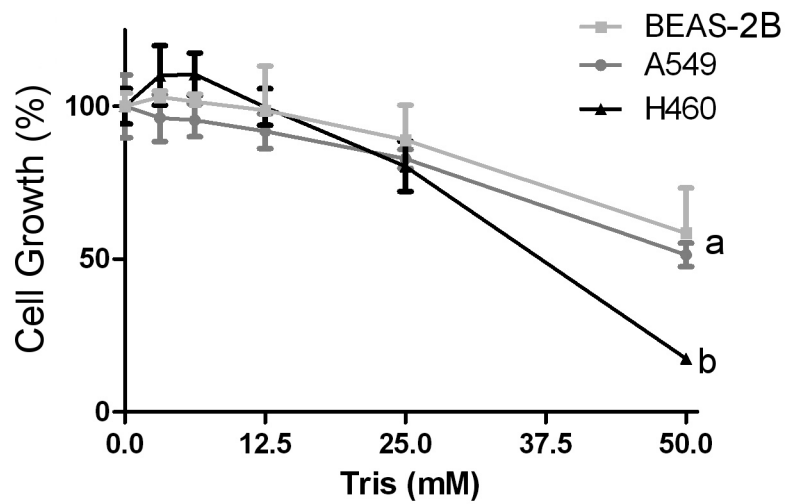


Figure 3: Effect of medium buffering by Tris on cell growth. Cells were cultivated in Tris buffer for 72h and cell growth was evaluated by SRB method. It was observed significant differences between H460 and the other cell lines (One-way ANOVA; n = 3).

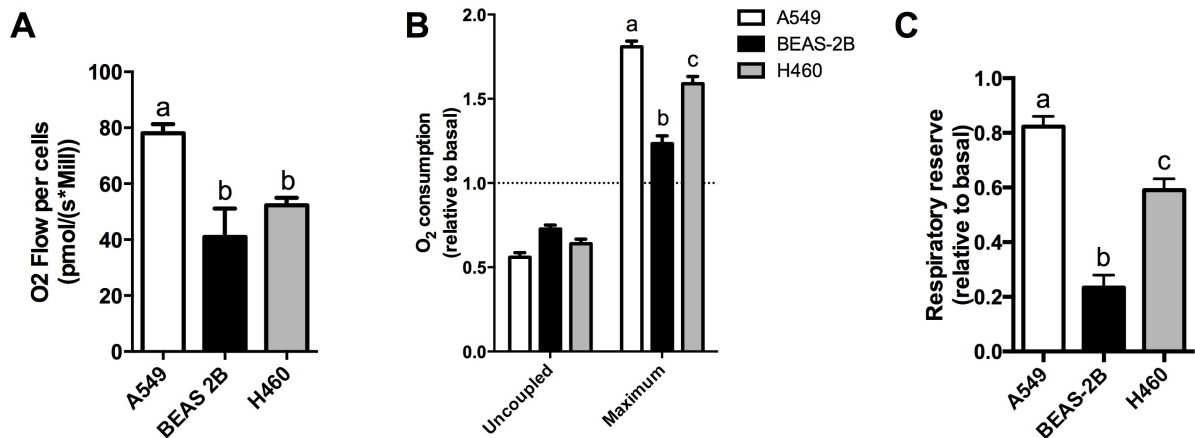
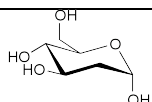
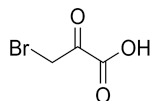
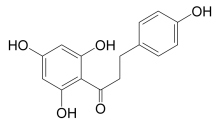
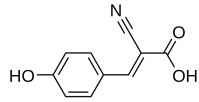


Figure 4: Respiration profile of the cell lines A549, BEAS-2B and H460. An equal amount (2×10^6 cells) of A549, BEAS-2B and H460 cells were placed into the oxygraph on RPMI FBS-free medium. (A) Basal oxygen consumption measurement revealed significant differences ($p < 0.005$) between A549 and BEAS-2B, as well as between A549 and H460 ($p < 0.0001$) (Student's *t* test; $n = 3-8$). (B) Uncoupled and maximum respiration were assessed by addition of oligomycin and FCCP, respectively. It was observed significant differences ($p < 0.0001$) between A549, BEAS-2B and H460 maximum respiration (One-way ANOVA; $n = 3-8$). (C) Respiratory reserve capacity was calculated relatively to basal by the difference between maximum respiration and basal respiration. It was observed significant differences ($p < 0.0001$) between A549, BEAS-2B and H460 (One-way ANOVA; $n = 3-8$).

Table 1: *In vitro* cytotoxicity (Growth Inhibition dose 50) of metabolic inhibitors on human non-small cell lung cancer cell lines.

Metabolic Inhibitor		GI ₅₀ (μM)		
Structure	Name	H460 cells	A549 cells	Selectivity Index
	2-Deoxy-D-glucose	3,130 ± 540	3,160 ± 457	1.01
	3-Bromopyruvate	116.0 ± 1.58	196.2 ± 26.22	1.69*
	Phloretin	96.88 ± 3.87	127.6 ± 16.42	1.32
	α-cyano-4-OH-cinnamate	3,190 ± 270	4,950 ± 830	1.55

Drug GI₅₀ were determined in exponentially growing cells by the Sulforhodamine B (SRB) method, following NCI60 protocol, as described in materials and methods section. Selectivity index (SI) were calculated according to $SI = GI_{50}$ of compound in the non-Warburg cancer cell line / GI_{50} in Warburg cancer cell line, where GI₅₀ is the drug concentration that required to inhibit 50% of cell growth.

Table 2: Enrichment analysis of metabolic pathways and Warburg isoforms on human NSCLC and lung epithelium cell lines with respective *p* values.

Analysis	Gly	Pyr	PPP	TCA	OXPHOS	War
A549 vs. BEAS-2B	<0.001	<0.001	<0.001	N.S	N.S	<0.005
H460 vs. BEAS-2B	<0.001	<0.001	<0.001	<0.005	N.S	<0.001
Tumor vs_ BEAS-2B	-	-	-	-	-	<0.001

Enrichment analyses were made via GSEA. Gene sets were created based on the metabolic pathways glycolysis (Gly), pyruvate metabolism (Pyr), pentose phosphate pathway (PPP), tricarboxylic acid cycle (TCA) and oxidative phosphorylation (OXPHOS), provided by Kyoto Encyclopedia of Genes and Genome (KEGG) (<http://www.genome.jp/kegg/>). Also, another gene set was created based on Warburg isoforms (War). All analyses were made on microarray data provided by GEO. GEO ID: GSE4824. Significance is shown by the representation of the *p* value for each analysis. N.S stands for not significant.

Table 3: Gene Set Enrichment Analysis (GSEA) of Warburg isoforms on human NSCLC and lung tissue.

Datasets	Analysis	Enrichment	<i>P</i> value
GSE11117	Tumor <i>vs.</i> Normal tissue	Warburg isoforms	<0.005
GSE3141	Dead <i>vs.</i> Alive adenocarcinoma patients	Warburg isoforms	<0.005

Enrichment analyses were made by GSEA on tumor tissue microarray. Gene set analyzed was based on Warburg isoforms. Microarray datasets were extracted from GEO. Significance is shown by its nominal *P*-value.

Table 4: Enriched Warburg isoforms on each analysis

Gene symbol	Gene name	NSCLC vs Control	ADC dead vs ADC alive	A549 vs BEAS-2B	H460 vs BEAS-2B	Tumor vs BEAS-2B
FH	Fumarate hydratase			✓	✓	✓
G6PD	Glucose-6-phosphate dehydrogenase		✓	✓	✓	✓
HK2	Hexokinase 2	✓	✓			
IDH1	isocitrate dehydrogenase 1	✓	✓	✓	✓	✓
LDHA	Lactate dehydrogenase A	✓	✓	✓	✓	✓
PFKFB3	Fructose-2,6-biphosphatase 3		✓	✓	✓	✓
PGK1	phosphoglycerate kinase 1	✓	✓		✓	✓
PYGB	Glycogen phosphorylase,; brain	✓	✓	✓	✓	✓
SLC16A3	Monocarboxylic acid transporter 4	✓	✓			
SLC2A1	Facilitated glucose transporter 1	✓				✓
TALDO1	transaldolase 1			✓	✓	✓
TKTL1	transketolase-like 1	✓		✓		

Enriched Warburg isoforms based on GSEA analysis for each group. NSCLC = Non-small cell lung cancer; ADC dead = adenocarcinoma dead patients; ADC alive = adenocarcinoma alive patients.

Appendix A

Genes included on each gene set

Pentose Phosphate Pathway	Pyruvate Metabolism	TCA cycle	Warburg isoforms
FBP1	ME3	CS	SLC2A1
PRPS1L1	ACOT12	DLAT	HK2
ALDOA	LDHAL6A	DLD	PFKFB3
ALDOB	DLAT	DLST	ALDOC
RPIA	DLD	FH	PGK1
ALDOC	LDHD	IDH1	PGAM2
G6PD	ALDH2	IDH2	PKM
PGLS	ALDH1B1	IDH3A	LDHA
GPI	ALDH9A1	IDH3B	SLC16A3
DERA	ALDH3A2	IDH3G	FH
PFKL	AKR1B1	MDH1	IDH1
PFKM	GLO1	MDH2	FASN
PFKP	HAGH	ACLY	G6PD
PGD	ACACA	ACO1	TKTL1
PGM1	ACACB	OGDH	TALDO1
PGM2;	ACAT1	ACO2	PYGB
PRPS1	ACAT2;	PC	
PRPS2	LDHA	PCK1	
RPE	LDHB	PCK2	
RBKS	LDHC	PDHA1	
TALDO1	MDH1	PDHA2	
TKT	MDH2	PDHB	
RPE	ME1	OGDHL	
TKTL1	ME2	SDHA	
TKTL2	ALDH7A1	SDHB	
FBP2	PC	SDHC	
RGN	PCK1	SDHD	
H6PD	PCK2	PDHX	
	PDHA1	SUCLG2	
	PDHA2	SUCLG1	
	PDHB	SUCLA2	
	PKLR		
	PKM		
	ACSS2		
	AKR1B10		
	PDHX		
	HAGHL		
	ACSS1		
	LDHAL6B		
	GRHPR		
	ACYP1		
	ACYP2		

Glycolysis			
AKR1A1	ALDH1B1	LDHA	PKLR
ADH1A	ALDH1A3	LDHB	PKM
ADH1B	FBP1	LDHC	PGM2
ADH1C	ALDH3B1	PGAM4	ACSS2
ADH4	ALDH3B2	ALDH7A1	G6PC2
ADH5	ALDH9A1	PCK1	BPGM
ADH6	ALDH3A2	PCK2	TPI1
GALM	ALDOA	PDHA1	HKDC1
ADH7	ALDOB	PDHA2	PDHX
LDHAL6A	ALDOC	PDHB	ADPGK
DLAT	G6PC	PFKL	ACSS1
DLD	GAPDH	PFKM	FBP2
ENO1	GAPDHS	PFKP	LDHAL6B
ENO2	GCK	PGAM1	
ENO3	GPI	PGAM2	
ALDH2	HK1	PGK1	
ALDH3A1	HK2	PGK2	
ALDH1B1	HK3	PGM1	

Oxidative phosphorylation					
NDUFC2-KCTD14	COX15	MT-ND4L	NDUFB9	ATP5D	PPA1
COX17	CYC1	MT-ND5	NDUFB10	ATP6V1D	NDUFA12
TCIRG1	ATP6V0E2	MT-ND6	NDUFC1	ATP5E	NDUFA4L2
ATP5H	COX7B2	NDUFA1	NDUFC2	ATP5F1	SDHA
ATP5L	ATP6V0A2	NDUFA2	NDUFS1	ATP5G1	SDHB
UQCR11	ATP6V0D2	NDUFA3	NDUFS2	ATP6V1H	SDHC
COX6B2	ATP6V1C2	NDUFA4	NDUFS3	ATP5G2	SDHD
NDUFA11	PPA2	NDUFA5	NDUFV1	ATP5G3	LHPP
ATP6V1G3	UQCRQ	NDUFA6	NDUFS4	ATP5I	UQCRB
COX4I1	UQCR10	NDUFA7	NDUFS5	ATP5J	UQCRC1
COX5B	COX8C	NDUFA8	NDUFS6	ATP6V1A	UQCRC2
COX6A1	NDUFS7	NDUFA9	NDUFS8	ATP6V1B1	UQCRFS1
COX6A2	MT-ATP6	NDUFA10	NDUFV2	ATP6V1B2	UQCRH
COX6B1	MT-ATP8	NDUFAB1	NDUFV3	ATP6V0C	COX4I2
COX6C	MT-CO1	NDUFB1	ATP12A	ATP6V1C1	ATP6V0E1
COX7A1	MT-CO2	NDUFB2	ATP4A	ATP6V1E1	ATP6V1E2
COX7A2	MT-CO3	NDUFB3	ATP4B	ATP6V0B	ATP6V0D1
COX7B	MT-CYTB	NDUFB4	ATP5A1	ATP6V1G2	COX7A2L
COX7C	MT-ND1	NDUFB5	ATP5B	ATP6V0A1	ATP6V1F
COX8A	MT-ND2	NDUFB6	ATP6V0A4	ATP6AP1	COX5A
COX10	MT-ND3	NDUFB7	ATP5C1	ATP5O	ATP6V1G1
COX11	MT-ND4	NDUFB8	NDUFA13	NDUFB11	ATP5J2

3 CONCLUSÃO E PERSPECTIVAS

Nesse trabalho, demonstramos que linhagens de células tumorais apresentam um perfil metabólico glicolítico, com alta liberação de lactato e grande reserva respiratória. A linhagem celular não-tumoral, por outro lado, apresentou-se oxidativa, e esses dados estão de acordo com o conhecido Efeito Warburg. Ainda, foram testadas diferentes drogas anti-metabólitas nas linhagens tumorais, e foi observado que há uma seletividade desses compostos pela linhagem H460, confirmando a hipótese de que essa linhagem é mais glicolítica do que A549. Esses resultados corroboram com a ideia de terapia personalizada, uma vez que há uma grande heterogeneidade entre tumores, e até mesmo dentro de um mesmo tumor. Dessa forma, o uso de drogas específicas para cada tipo de tumor pode ser uma boa estratégia terapêutica, de forma a ser seletiva e eficaz. Também, foram analisados os perfis de expressão gênica quanto ao metabolismo energético de cada linhagem, onde foi observado que as linhagens tumorais apresentam um enriquecimento para genes de vias glicolíticas, como glicólise, metabolismo do piruvato e via das pentoses. Também foi visto nas linhagens tumorais o enriquecimento de isoformas Warburg, responsáveis pela reprogramação metabólica. Por fim, foi observada a importância desses resultados na clínica, onde se viu que biópsias de câncer de pulmão também apresentam um enriquecimento para isoformas Warburg. Este dado também foi observado para pacientes mortos de adenocarcinoma quando comparados com pacientes vivos do mesmo tipo histológico, demonstrando uma relação da expressão dessas enzimas com o desfecho do paciente. Analisando as isoformas enriquecidas em todas as análises, é possível sugerir novos alvos para estudos na terapia do câncer. Dessa forma, as perspectivas desse trabalho envolvem mais estudos em relação a esses alvos, para que possivelmente se consiga sugerir um novo biomarcador para o câncer.

REFERÊNCIAS

- Endesfelder, D., Math, D., Gronroos, E., Ph, D., Martinez, P., Matthews, N., Sc, B., Stewart, A., Sc, M., Tarpey, P., Varela, I., Phillimore, B., Begum, S., Mcdonald, N.Q., Butler, A., Jones, D., Raine, K., Latimer, C., Santos, C.R., Nohadani, M., Eklund, A.C., Spencersdene, B., Clark, G., Pickering, L., Stamp, G., Gore, M., Szallasi, Z., Downward, J., Futreal, P.A., Swanton, C., 2012. Intratumor Heterogeneity and Branched Evolution Revealed by Multiregion Sequencing.
- Ferlay, J., Shin, H.-R., Bray, F., Forman, D., Mathers, C., Parkin, D.M., 2010. Estimates of worldwide burden of cancer in 2008: GLOBOCAN 2008. *International journal of cancer. Journal international du cancer* 127, 2893–917.
- Folkman, J., Hahnfeltd, P., Hlatky, L., 2000. Cancer: looking outside the genome. *Nature reviews. Molecular cell biology* 1, 76–9.
- Gatenby, R. a, Gillies, R.J., 2004. Why do cancers have high aerobic glycolysis? *Nature reviews. Cancer* 4, 891–9.
- Herling, A., König, M., Bulik, S., Holzhütter, H.-G., 2011. Enzymatic features of the glucose metabolism in tumor cells. *The FEBS journal* 278, 2436–59.
- Izumi, H., Torigoe, T., Ishiguchi, H., Uramoto, H., Yoshida, Y., Tanabe, M., Ise, T., Murakami, T., Yoshida, T., Nomoto, M., Kohno, K., 2003. Cellular pH regulators: potentially promising molecular targets for cancer chemotherapy. *Cancer Treatment Reviews* 29, 541–549.
- Jemal, A., Bray, F., Ferlay, J., 2011. *Global Cancer Statistics* 61, 69–90.
- Ko, Y H, Pedersen, P L, Geschwind, J.F., 2001. Glucose catabolism in the rabbit VX2 tumor model for liver cancer: characterization and targeting hexokinase. *Cancer letters* 173, 83–91.
- Koukourakis, M.I., Giatromanolaki, A., Sivridis, E., Gatter, K.C., Harris, A.L., 2005. Pyruvate Dehydrogenase and Pyruvate Dehydrogenase Kinase Expression in Non Small Cell Lung Cancer and Tumor-Associated Stroma. *Neoplasia* 7, 1–6.
- Kumar, A., Kant, S., Singh, S.M., 2013. α -Cyano-4-hydroxycinnamate induces apoptosis in Dalton's lymphoma cells: role of altered cell survival-regulatory mechanisms. *Anti-cancer drugs* 24, 158–71.
- Kunkel, M., Reichert, T.E., Benz, P., Lehr, H.-A., Jeong, J.-H., Wieand, S., Bartenstein, P., Wagner, W., Whiteside, T.L., 2003. Overexpression of Glut-1 and increased glucose metabolism in tumors are associated with a poor prognosis in patients with oral squamous cell carcinoma. *Cancer* 97, 1015–24.
- Langbein, S., Zerilli, M., Zur Hausen, a, Staiger, W., Rensch-Boschert, K., Lukan, N., Popa, J., Ternullo, M.P., Steidler, a, Weiss, C., Grobholz, R., Willeke, F., Alken, P., Stassi, G., Schubert, P., Coy, J.F., 2006. Expression of transketolase TKTL1 predicts colon and

- urothelial cancer patient survival: Warburg effect reinterpreted. *British journal of cancer* 94, 578–85.
- Le, A., Cooper, C.R., Gouw, A.M., Dinavahi, R., Maitra, A., Deck, L.M., Royer, R.E., Vander Jagt, D.L., Semenza, G.L., Dang, C. V, 2010. Inhibition of lactate dehydrogenase A induces oxidative stress and inhibits tumor progression. *Proceedings of the National Academy of Sciences of the United States of America* 107, 2037–42.
- López-Lázaro, M., 2010. A new view of carcinogenesis and an alternative approach to cancer therapy. *Molecular medicine (Cambridge, Mass.)* 16, 144–53.
- Mathupala, S.P., Ko, Young H, Pedersen, Peter L, 2010. Hexokinase-2 bound to mitochondria: Cancer’s stygian link to the “Warburg effect” and a pivotal target for effective therapy. *Seminars in cancer biology* 19, 17–24.
- Mochiki, E., Kuwano, H., Katoh, H., Asao, T., Oriuchi, N., Endo, K., 2004. Evaluation of 18F-2-deoxy-2-fluoro-D-glucose positron emission tomography for gastric cancer. *World journal of surgery* 28, 247–53.
- Pelicano, H., Martin, D.S., Xu, R.-H., Huang, P., 2006. Glycolysis inhibition for anticancer treatment. *Oncogene* 25, 4633–46.
- Pereira da Silva, A.P., El-Bacha, T., Kyaw, N., Dos Santos, R.S., da-Silva, W.S., Almeida, F.C.L., Da Poian, A.T., Galina, A., 2009. Inhibition of energy-producing pathways of HepG2 cells by 3-bromopyruvate. *The Biochemical journal* 417, 717–26.
- Racker, E., 1974. History of the Pasteur effect and its pathobiology. *Molecular and cellular biochemistry* 5, 17–23.
- Ramalingam, S., Belani, C., 2008. Systemic chemotherapy for advanced non-small cell lung cancer: recent advances and future directions. *The oncologist* 13 Suppl 1, 5–13.
- Rashid, a, Pizer, E.S., Moga, M., Milgraum, L.Z., Zahurak, M., Pasternack, G.R., Kuhajda, F.P., Hamilton, S.R., 1997. Elevated expression of fatty acid synthase and fatty acid synthetic activity in colorectal neoplasia. *The American journal of pathology* 150, 201–8.
- Scheepers, a, Joost, H., Schurmann, a, 2004. The glucose transporter families SGLT and GLUT: molecular basis of normal and aberrant function. *Journal of Parenteral and Enteral Nutrition* 28, 364–371.
- Siegel, R., Desantis, C., Virgo, K., Stein, K., Mariotto, A., Smith, T., Cooper, D., Gansler, T., Lerro, C., Fedewa, S., 2012. *Cancer Treatment and Survivorship Statistics*, 2012.
- Skehan, P., Storeng, R., Scudiero, D., Monks, A., Vistica, D., Warren, J.T., Bokesch, H., Boyd, M.R., 1990. New Colorimetric Cytotoxicity Assay for 1107–1112.
- Sonveaux, P., Végran, F., Schroeder, T., Wergin, M.C., Verrax, J., Rabbani, Z.N., De Saedeleer, C.J., Kennedy, K.M., Diepart, C., Jordan, B.F., Kelley, M.J., Gallez, B., Wahl, M.L., Feron, O., Dewhirst, M.W., 2008a. Targeting lactate-fueled respiration

- selectively kills hypoxic tumor cells in mice. *The Journal of clinical investigation* 118, 3930–42.
- Sonveaux, P., Végran, F., Schroeder, T., Wergin, M.C., Verrax, J., Rabbani, Z.N., Saedeleer, C.J. De, Kennedy, K.M., Diepart, C., Jordan, B.F., Kelley, M.J., Gallez, B., Wahl, M.L., Feron, O., Dewhirst, M.W., 2008b. Targeting lactate-fueled respiration selectively kills hypoxic tumor cells in mice 118.
- Subramanian, A., Tamayo, P., Mootha, V.K., Mukherjee, S., Ebert, B.L., 2005. Gene set enrichment analysis : A knowledge-based approach for interpreting genome-wide.
- Tashima, S., Shimada, S., Yamaguchi, K., Tsuruta, J., Ogawa, M., 2000. Expression of brain-type glycogen phosphorylase is a potentially novel early biomarker in the carcinogenesis of human colorectal carcinomas. *The American journal of gastroenterology* 95, 255–63.
- Tennant, D. a, Durán, R. V, Gottlieb, E., 2010. Targeting metabolic transformation for cancer therapy. *Nature reviews. Cancer* 10, 267–77.
- Vander Heiden, M.G., Cantley, L.C., Thompson, C.B., 2009. Understanding the Warburg effect: the metabolic requirements of cell proliferation. *Science (New York, N.Y.)* 324, 1029–33.
- Warburg, O., 1956. Injuring of Respiration the Origin of Cancer Cells. *Science* 123.
- Ward, P.S., Thompson, C.B., 2013. Metabolic Reprogramming: A Cancer Hallmark Even Warburg Did Not Anticipate 21, 297–308.
- Wu, C.-H., Ho, Y.-S., Tsai, C.-Y., Wang, Y.-J., Tseng, H., Wei, P.-L., Lee, C.-H., Liu, R.-S., Lin, S.-Y., 2009. In vitro and in vivo study of phloretin-induced apoptosis in human liver cancer cells involving inhibition of type II glucose transporter. *International journal of cancer. Journal international du cancer* 124, 2210–9.
- Wu, M., Neilson, A., Swift, A.L., Moran, R., Tamagnine, J., Parslow, D., Armistead, S., Lemire, K., Orrell, J., Teich, J., Chomicz, S., Ferrick, D. a, 2007. Multiparameter metabolic analysis reveals a close link between attenuated mitochondrial bioenergetic function and enhanced glycolysis dependency in human tumor cells. *American journal of physiology. Cell physiology* 292, C125–36.
- Yoo, H., Antoniewicz, M.R., Stephanopoulos, G., Kelleher, J.K., 2008. Quantifying reductive carboxylation flux of glutamine to lipid in a brown adipocyte cell line. *The Journal of biological chemistry* 283, 20621–7.

Formatação da Revista Molecular Oncology



MOLECULAR ONCOLOGY

Molecular Oncology is published by Elsevier on behalf of the Federation of European Biochemical Societies

AUTHOR INFORMATION PACK

TABLE OF CONTENTS

• Description	p.1
• Audience	p.2
• Impact Factor	p.2
• Abstracting and Indexing	p.2
• Editorial Board	p.2
• Guide for Authors	p.4

Molecular
Oncology



ISSN: 1574-7891

DESCRIPTION

Molecular Oncology highlights new discoveries, approaches, as well as technical developments, in basic, clinical and discovery-driven translational research. Topics include:

- Key biological processes such as cell cycle; DNA repair; apoptosis; invasion and metastasis; angiogenesis and lymphangiogenesis; cell signalling and interactive networks; immune response.
- Emerging technologies (genomics, proteomics, functional genomics, metabolomics, tissue arrays, imaging), and model systems.
- Biomarkers: diagnosis, prognosis, stratification and efficacy.
- Cancer genetics, epigenetics, and genomic instability.
- Minimal residual disease, pre-malignant lesions.
- Cancer micro-environment.
- Molecular pathology.
- Tumour immunology.
- Translational research.
- Cancer therapy (target discovery, drug design, immunotherapy, combination therapies, resistance, and individualised treatment).
- Chemotherapy, radiotherapy and surgery.
- Clinical pharmacology.
- Clinical trials, integration of basic science into cancer clinical trials.
- Epidemiology and prevention.
- Infrastructures (biobanks, databases, genomic resources).

A main feature of the Journal is to provide an international forum for debating cancer issues, and for integrating the input of all the stakeholders.

Coverage: Reviews, original articles, technical notes, editorials, news & views (commentary, science policy issues, ethical and legal issues, patient organisations, industry needs and alliances, regulatory issues, news items), letters to the editor, conference announcements, advertisements.

Submitting Authors:

Manuscripts can be submitted to *Molecular Oncology* at: <http://ees.elsevier.com/molonc/>

AUDIENCE

Scientists and health professionals interested in molecular aspects of the development, diagnosis and treatment of cancer. Sponsored Articles: Molecular Oncology offers authors the option to sponsor non-subscriber access to their articles on Elsevier's electronic publishing platforms. For more information please view our <http://www.elsevier.com/wps/find/authorsview.authors/sponsoredarticles> Sponsored Article page .

IMPACT FACTOR

2010: 4.250 © Thomson Reuters Journal Citation Reports 2011

ABSTRACTING AND INDEXING

BIOSIS
EMBASE
EMBiology
Scopus

EDITORIAL BOARD

Editor in Chief:

J.E. Celis, Copenhagen, Denmark, **Email:** Molonc@cancer.dk

Senior Associate Editors:

A. Børresen-Dale, Oslo, Norway
R. Schilsky, Chicago, IL, USA

Managing Editor:

J. Moreira, Institute of Cancer Biology, Copenhagen, Denmark, **Email:** jom@cancer.dk

Editorial Board:

R. Aebersold, Zurich, Switzerland
K. Alitalo, Helsinki, Finland
M. Barbacid, Madrid, Spain
J. Bartek, Copenhagen, Denmark
J. Baselga, Barcelona, Spain
B.C. Bastian, New York, NY, USA
S.B. Baylin, Baltimore, MD, USA
F. Belardelli, Rome, Italy
R. Bernards, Amsterdam, Netherlands
A.J.M. Berns, Amsterdam, Netherlands
M. Bissell, Berkeley, CA, USA
P. Boyle, Lyon, France
N. Brüner, Frederiksberg C, Denmark
C. M. Croce, Columbus, OH, USA
P.P. Di Fiore, Milan, Italy
E. Diamandis, Toronto, ON, Canada
L.M. Ellis, Houston, TX, USA
M. Esteller, Barcelona, Spain
S.H. Friend, Seattle, WA, USA
T.R. Golub, Boston, MA, USA
H.B. Grossman, Houston, TX, USA
B. Haab, Grand Rapids, MI, USA
N. Harbeck, Cologne, Germany
D.F. Hayes, Ann Arbor, MI, USA
C.-H. Heldin, Uppsala, Sweden
R.B. Herberman, Blacksburg, VA, USA
H.R. Herschman, Los Angeles, CA, USA
H. Hricak, New York, NY, USA
T. Hunter, La Jolla, CA, USA
E.S. Jaffe, Bethesda, MD, USA

O. Kallioniemi, Turku, Finland
D.J. Kerr, Oxford, UK
G. Kroemer, Villejuif (Paris), France
O. C. Lingjaerde, Oslo, Norway
E. Liu, Singapore, Singapore
T.W. Mak, Toronto, ON, Canada
R. Marais, London, UK
E. Mardis, St. Louis, MO, USA
J. Massagué, New York, NY, USA
J. Mendelsohn, Houston, TX, USA
G.B. Mills, Houston, TX, USA
E. Oláh, Budapest, Hungary
M. Oren, Rehovot, Israel
M. Piccart, Brussels, Belgium
J.W. Pollard, New York, NY, USA
D.F. Ransohoff, Chapel Hill, NC, USA
J.S. Reis-Filho, London, UK
U. Ringborg, Stockholm, Sweden
H. Sasano, Sendai, Japan
A. Spatz, Montreal, QC, Canada
I.J. Stratford, Manchester, UK
F.C.G.J. Sweep, Nijmegen, Netherlands
D. Tarin, La Jolla, CA, USA
T. Tursz, Villejuif, France
M.L. Tykocinski, Philadelphia, PA, USA
M. Uhlen, Stockholm, Sweden
A. Ullrich, Singapore, Singapore
N. Urban, Seattle, WA, USA
J.E. Visvader, Parkville, VIC, Australia
A. Wellstein, Washington, DC, USA
O.D. Wiestler, Heidelberg, Germany
C.L. Willman, Albuquerque, NM, USA
H.-M. Yang, Beijing, China
Y. Yarden, Rehovot, Israel
J. Yates, La Jolla, CA, USA
T. Yeatman, Tampa, FL, USA
Q. Zhan, Beijing, China
T.F. Ørntoft, Aarhus N, Denmark

GUIDE FOR AUTHORS

INTRODUCTION

Molecular Oncology is an international comprehensive journal that publishes original research, editorial commentaries, review articles and news on molecular oncology. It highlights new discoveries, approaches, as well as technical developments, in basic, clinical and discovery-driven translational cancer research.

The emphasis is on work that significantly advances our understanding of disease processes leading to human tumour development and/or establishes novel concepts of clear clinical significance in diagnosis, prognosis and prevention strategies for cancer patients.

Topics include, but are not limited to:

Key biological processes such as cell cycle; DNA repair; apoptosis; invasion and metastasis; angiogenesis and lymphangiogenesis; cell signalling and interactive networks; immune response. Emerging technologies (genomics, proteomics, functional genomics, metabolomics, tissue arrays, bio-imaging), and model systems. Biomarkers: diagnosis, prognosis, stratification and efficacy. Cancer genetics, epigenetics, and genomic instability. Minimal residual disease, pre-malignant lesions. Cancer micro-environment. Molecular pathology. Tumour immunology. Translational research. Cancer therapy (target discovery, drug design, immunotherapy, combination therapies, resistance, and individualised treatment). Chemotherapy, radiotherapy and surgery. Clinical pharmacology. Clinical trials, integration of basic science into cancer clinical trials. Epidemiology. Infrastructures (biobanks, databases, genomic resources, technology platforms).

A main feature of the Journal is to provide an international Forum for debating cancer issues, and for integrating the input of all the stakeholders.

Types of paper

Full-length research articles, Technical Notes, News and Views, Reviews and Mini-Reviews, Letters to the Editor.

Contact details for submission

Papers should be submitted using the *Molecular Oncology* online submission system, <http://ees.elsevier.com/molonc>. For questions on the submission or reviewing process, please contact the Editorial Office prior to submission at e-mail: molonc@cancer.dk

Page charges

This journal has no page charges.

BEFORE YOU BEGIN

Ethics in publishing

For information on Ethics in publishing and Ethical guidelines for journal publication see <http://www.elsevier.com/publishingethics> and <http://www.elsevier.com/ethicalguidelines>.

Policy and ethics

The work described in your article must have been carried out in accordance with *The Code of Ethics of the World Medical Association (Declaration of Helsinki) for experiments involving humans* <http://www.wma.net/en/30publications/10policies/b3/index.html>; *EU Directive 2010/63/EU for animal experiments* http://ec.europa.eu/environment/chemicals/lab_animals/legislation_en.htm; *Uniform Requirements for manuscripts submitted to Biomedical journals* <http://www.icmje.org>. This must be stated at an appropriate point in the article.

Conflict of interest

All authors are requested to disclose any actual or potential conflict of interest including any financial, personal or other relationships with other people or organizations within three years of beginning the submitted work that could inappropriately influence, or be perceived to influence, their work. See also <http://www.elsevier.com/conflictsofinterest>.

Submission declaration

Submission of an article implies that the work described has not been published previously (except in the form of an abstract or as part of a published lecture or academic thesis), that it is not under consideration for publication elsewhere, that its publication is approved by all authors and tacitly or

explicitly by the responsible authorities where the work was carried out, and that, if accepted, it will not be published elsewhere including electronically in the same form, in English or in any other language, without the written consent of the copyright-holder.

Authorship

All authors should have made substantial contributions to all of the following: (1) the conception and design of the study, or acquisition of data, or analysis and interpretation of data, (2) drafting the article or revising it critically for important intellectual content, (3) final approval of the version to be submitted.

Changes to authorship

This policy concerns the addition, deletion, or rearrangement of author names in the authorship of accepted manuscripts:

Before the accepted manuscript is published in an online issue: Requests to add or remove an author, or to rearrange the author names, must be sent to the Journal Manager from the corresponding author of the accepted manuscript and must include: (a) the reason the name should be added or removed, or the author names rearranged and (b) written confirmation (e-mail, fax, letter) from all authors that they agree with the addition, removal or rearrangement. In the case of addition or removal of authors, this includes confirmation from the author being added or removed. Requests that are not sent by the corresponding author will be forwarded by the Journal Manager to the corresponding author, who must follow the procedure as described above. Note that: (1) Journal Managers will inform the Journal Editors of any such requests and (2) publication of the accepted manuscript in an online issue is suspended until authorship has been agreed.

After the accepted manuscript is published in an online issue: Any requests to add, delete, or rearrange author names in an article published in an online issue will follow the same policies as noted above and result in a corrigendum.

Copyright

Upon acceptance of an article, authors will be asked to complete a 'Journal Publishing Agreement' (for more information on this and copyright see <http://www.elsevier.com/copyright>). Acceptance of the agreement will ensure the widest possible dissemination of information. An e-mail will be sent to the corresponding author confirming receipt of the manuscript together with a 'Journal Publishing Agreement' form or a link to the online version of this agreement.

Subscribers may reproduce tables of contents or prepare lists of articles including abstracts for internal circulation within their institutions. Permission of the Publisher is required for resale or distribution outside the institution and for all other derivative works, including compilations and translations (please consult <http://www.elsevier.com/permissions>). If excerpts from other copyrighted works are included, the author(s) must obtain written permission from the copyright owners and credit the source(s) in the article. Elsevier has preprinted forms for use by authors in these cases: please consult <http://www.elsevier.com/permissions>.

Retained author rights

As an author you (or your employer or institution) retain certain rights; for details you are referred to: <http://www.elsevier.com/authorsrights>.

Role of the funding source

You are requested to identify who provided financial support for the conduct of the research and/or preparation of the article and to briefly describe the role of the sponsor(s), if any, in study design; in the collection, analysis and interpretation of data; in the writing of the report; and in the decision to submit the article for publication. If the funding source(s) had no such involvement then this should be stated. Please see <http://www.elsevier.com/funding>.

Funding body agreements and policies

Elsevier journals comply with current NIH public access policy

Open access

This journal offers you the option of making your article freely available to all via the ScienceDirect platform. To prevent any conflict of interest, you can only make this choice after receiving notification that your article has been accepted for publication. The fee of \$3,000 excludes taxes and other potential author fees such as color charges. In some cases, institutions and funding bodies have entered into agreement with Elsevier to meet these fees on behalf of their authors. Details of these agreements are available at <http://www.elsevier.com/fundingbodies>. Authors of accepted articles, who wish to take advantage of this option, should complete and submit the order form (available at

<http://www.elsevier.com/locate/openaccessform.pdf>). Whatever access option you choose, you retain many rights as an author, including the right to post a revised personal version of your article on your own website. More information can be found here: <http://www.elsevier.com/authorsrights>.

Language and language services

Please write your text in good English (American or British usage is accepted, but not a mixture of these). Authors who require information about language editing and copyediting services pre- and post-submission please visit <http://webshop.elsevier.com/languageservices> or our customer support site at <http://support.elsevier.com> for more information.

Submission

Submission to this journal proceeds totally online and you will be guided stepwise through the creation and uploading of your files. The system automatically converts source files to a single PDF file of the article, which is used in the peer-review process. Please note that even though manuscript source files are converted to PDF files at submission for the review process, these source files are needed for further processing after acceptance. All correspondence, including notification of the Editor's decision and requests for revision, takes place by e-mail removing the need for a paper trail.

Reviewers

Please submit, with the manuscript, the names, addresses and e-mail addresses of 3 potential reviewers. Note that the editor retains the sole right to decide whether or not the suggested reviewers are used.

PREPARATION

Use of wordprocessing software

It is important that the file be saved in the native format of the wordprocessor used. The text should be in single-column format. Keep the layout of the text as simple as possible. Most formatting codes will be removed and replaced on processing the article. In particular, do not use the wordprocessor's options to justify text or to hyphenate words. However, do use bold face, italics, subscripts, superscripts etc. When preparing tables, if you are using a table grid, use only one grid for each individual table and not a grid for each row. If no grid is used, use tabs, not spaces, to align columns. The electronic text should be prepared in a way very similar to that of conventional manuscripts (see also the Guide to Publishing with Elsevier: <http://www.elsevier.com/guidepublication>). Note that source files of figures, tables and text graphics will be required whether or not you embed your figures in the text. See also the section on Electronic artwork.

To avoid unnecessary errors you are strongly advised to use the 'spell-check' and 'grammar-check' functions of your wordprocessor.

Article structure

Subdivision - numbered sections

Divide your article into clearly defined and numbered sections. Subsections should be numbered 1.1 (then 1.1.1, 1.1.2, ...), 1.2, etc. (the abstract is not included in section numbering). Use this numbering also for internal cross-referencing; do not just refer to 'the text'. Any subsection may be given a brief heading. Each heading should appear on its own separate line.

Introduction

State the objectives of the work and provide an adequate background, avoiding a detailed literature survey or a summary of the results.

Material and methods

Provide sufficient detail to allow the work to be reproduced. Methods already published should be indicated by a reference: only relevant modifications should be described.

Theory/calculation

A Theory section should extend, not repeat, the background to the article already dealt with in the Introduction and lay the foundation for further work. In contrast, a Calculation section represents a practical development from a theoretical basis.

Results

Results should be clear and concise.

Discussion

This should explore the significance of the results of the work, not repeat them. A combined Results and Discussion section is often appropriate. Avoid extensive citations and discussion of published literature.

Conclusions

The main conclusions of the study may be presented in a short Conclusions section, which may stand alone or form a subsection of a Discussion or Results and Discussion section.

Appendices

If there is more than one appendix, they should be identified as A, B, etc. Formulae and equations in appendices should be given separate numbering: Eq. (A.1), Eq. (A.2), etc.; in a subsequent appendix, Eq. (B.1) and so on. Similarly for tables and figures: Table A.1; Fig. A.1, etc.

Essential title page information

- **Title.** Concise and informative. Titles are often used in information-retrieval systems. Avoid abbreviations and formulae where possible.
- **Author names and affiliations.** Where the family name may be ambiguous (e.g., a double name), please indicate this clearly. Present the authors' affiliation addresses (where the actual work was done) below the names. Indicate all affiliations with a lower-case superscript letter immediately after the author's name and in front of the appropriate address. Provide the full postal address of each affiliation, including the country name and, if available, the e-mail address of each author.
- **Corresponding author.** Clearly indicate who will handle correspondence at all stages of refereeing and publication, also post-publication. **Ensure that telephone and fax numbers (with country and area code) are provided in addition to the e-mail address and the complete postal address. Contact details must be kept up to date by the corresponding author.**
- **Present/permanent address.** If an author has moved since the work described in the article was done, or was visiting at the time, a 'Present address' (or 'Permanent address') may be indicated as a footnote to that author's name. The address at which the author actually did the work must be retained as the main, affiliation address. Superscript Arabic numerals are used for such footnotes.

Abstract

A concise and factual abstract is required. The abstract should state briefly the purpose of the research, the principal results and major conclusions. An abstract is often presented separately from the article, so it must be able to stand alone. For this reason, References should be avoided, but if essential, then cite the author(s) and year(s). Also, non-standard or uncommon abbreviations should be avoided, but if essential they must be defined at their first mention in the abstract itself.

Graphical abstract

A Graphical abstract is optional and should summarize the contents of the article in a concise, pictorial form designed to capture the attention of a wide readership online. Authors must provide images that clearly represent the work described in the article. Graphical abstracts should be submitted as a separate file in the online submission system. Image size: Please provide an image with a minimum of 531 × 1328 pixels (h × w) or proportionally more. The image should be readable at a size of 5 × 13 cm using a regular screen resolution of 96 dpi. Preferred file types: TIFF, EPS, PDF or MS Office files. See <http://www.elsevier.com/graphicalabstracts> for examples.

Authors can make use of Elsevier's Illustration and Enhancement service to ensure the best presentation of their images also in accordance with all technical requirements: [Illustration Service](#).

Highlights

Highlights are mandatory for this journal. They consist of a short collection of bullet points that convey the core findings of the article and should be submitted in a separate file in the online submission system. Please use 'Highlights' in the file name and include 3 to 5 bullet points (maximum 85 characters, including spaces, per bullet point). See <http://www.elsevier.com/highlights> for examples.

Keywords

Immediately after the abstract, provide a maximum of 6 keywords, using American spelling and avoiding general and plural terms and multiple concepts (avoid, for example, 'and', 'of'). Be sparing with abbreviations: only abbreviations firmly established in the field may be eligible. These keywords will be used for indexing purposes.

Abbreviations

Define abbreviations that are not standard in this field in a footnote to be placed on the first page of the article. Such abbreviations that are unavoidable in the abstract must be defined at their first mention there, as well as in the footnote. Ensure consistency of abbreviations throughout the article.

Acknowledgements

Collate acknowledgements in a separate section at the end of the article before the references and do not, therefore, include them on the title page, as a footnote to the title or otherwise. List here those individuals who provided help during the research (e.g., providing language help, writing assistance or proof reading the article, etc.).

Database linking

Elsevier aims at connecting online articles with external databases which are useful in their respective research communities. If your article contains relevant unique identifiers or accession numbers (bioinformatics) linking to information on entities (genes, proteins, diseases, etc.) or structures deposited in public databases, then please indicate those entities according to the standard explained below.

Authors should explicitly mention the *database abbreviation (as mentioned below) together with the actual database number*, bearing in mind that an error in a letter or number can result in a dead link in the online version of the article.

Please use the following format: **Database ID: xxxx**

Links can be provided in your online article to the following databases (examples of citations are given in parentheses):

- **ASTM**: ASTM Standards Database (ASTM ID: G63)
- **CCDC**: Cambridge Crystallographic Data Centre (CCDC ID: AI631510)
- **GenBank**: Genetic sequence database at the National Center for Biotechnology Information (NCBI) (GenBank ID: BA123456)
- **GEO**: Gene Expression Omnibus (GEO ID: GSE27196; GEO ID: GPL5366; GEO ID: GSM9853)
- **MI**: EMBL-EBI OLS Molecular Interaction Ontology (MI ID: 0218)
- **MINT**: Molecular INTERactions database (MINT ID: 6166710)
- **NCBI Taxonomy**: NCBI Taxonomy Browser (NCBI Taxonomy ID: 48184)
- **NCT**: ClinicalTrials.gov (NCT ID: NCT00222573)
- **OMIM**: Online Mendelian Inheritance in Man (OMIM ID: 601240)
- **PDB**: Worldwide Protein Data Bank (PDB ID: 1TUP)
- **TAIR**: The Arabidopsis Information Resource database (TAIR ID: AT1G01020)
- **UniProt**: Universal Protein Resource Knowledgebase (UniProt ID: Q9H0H5)

Math formulae

Present simple formulae in the line of normal text where possible and use the solidus (/) instead of a horizontal line for small fractional terms, e.g., X/Y. In principle, variables are to be presented in italics. Powers of e are often more conveniently denoted by exp. Number consecutively any equations that have to be displayed separately from the text (if referred to explicitly in the text).

Footnotes

Footnotes should be used sparingly. Number them consecutively throughout the article, using superscript Arabic numbers. Many wordprocessors build footnotes into the text, and this feature may be used. Should this not be the case, indicate the position of footnotes in the text and present the footnotes themselves separately at the end of the article. Do not include footnotes in the Reference list.

Table footnotes

Indicate each footnote in a table with a superscript lowercase letter.

Artwork

Electronic artwork

General points

- Make sure you use uniform lettering and sizing of your original artwork.
- Save text in illustrations as 'graphics' or enclose the font.
- Only use the following fonts in your illustrations: Arial, Courier, Times, Symbol.
- Number the illustrations according to their sequence in the text.
- Use a logical naming convention for your artwork files.
- Provide captions to illustrations separately.
- Produce images near to the desired size of the printed version.
- Submit each figure as a separate file.

A detailed guide on electronic artwork is available on our website:

<http://www.elsevier.com/artworkinstructions>

You are urged to visit this site; some excerpts from the detailed information are given here.

Formats

Regardless of the application used, when your electronic artwork is finalised, please 'save as' or convert the images to one of the following formats (note the resolution requirements for line drawings, halftones, and line/halftone combinations given below):

EPS: Vector drawings. Embed the font or save the text as 'graphics'.

TIFF: Color or grayscale photographs (halftones): always use a minimum of 300 dpi.

TIFF: Bitmapped line drawings: use a minimum of 1000 dpi.

TIFF: Combinations bitmapped line/half-tone (color or grayscale): a minimum of 500 dpi is required.

If your electronic artwork is created in a Microsoft Office application (Word, PowerPoint, Excel) then please supply 'as is'.

Please do not:

- Supply files that are optimised for screen use (e.g., GIF, BMP, PICT, WPG); the resolution is too low;
- Supply files that are too low in resolution;
- Submit graphics that are disproportionately large for the content.

Color artwork

Please make sure that artwork files are in an acceptable format (TIFF, EPS or MS Office files) and with the correct resolution. If, together with your accepted article, you submit usable color figures then Elsevier will ensure, at no additional charge, that these figures will appear in color on the Web (e.g., ScienceDirect and other sites) regardless of whether or not these illustrations are reproduced in color in the printed version. **For color reproduction in print, you will receive information regarding the costs from Elsevier after receipt of your accepted article.** Please indicate your preference for color: in print or on the Web only. For further information on the preparation of electronic artwork, please see <http://www.elsevier.com/artworkinstructions>.

Please note: Because of technical complications which can arise by converting color figures to 'gray scale' (for the printed version should you not opt for color in print) please submit in addition usable black and white versions of all the color illustrations.

Figure captions

Ensure that each illustration has a caption. Supply captions separately, not attached to the figure. A caption should comprise a brief title (**not** on the figure itself) and a description of the illustration. Keep text in the illustrations themselves to a minimum but explain all symbols and abbreviations used.

Tables

Number tables consecutively in accordance with their appearance in the text. Place footnotes to tables below the table body and indicate them with superscript lowercase letters. Avoid vertical rules. Be sparing in the use of tables and ensure that the data presented in tables do not duplicate results described elsewhere in the article.

References

Citation in text

Please ensure that every reference cited in the text is also present in the reference list (and vice versa). Any references cited in the abstract must be given in full. Unpublished results and personal communications are not recommended in the reference list, but may be mentioned in the text. If these references are included in the reference list they should follow the standard reference style of the journal and should include a substitution of the publication date with either 'Unpublished results' or 'Personal communication'. Citation of a reference as 'in press' implies that the item has been accepted for publication.

Web references

As a minimum, the full URL should be given and the date when the reference was last accessed. Any further information, if known (DOI, author names, dates, reference to a source publication, etc.), should also be given. Web references can be listed separately (e.g., after the reference list) under a different heading if desired, or can be included in the reference list.

References in a special issue

Please ensure that the words 'this issue' are added to any references in the list (and any citations in the text) to other articles in the same Special Issue.

Reference management software

This journal has standard templates available in key reference management packages EndNote (<http://www.endnote.com/support/enstyles.asp>) and Reference Manager (<http://refman.com/support/rmstyles.asp>). Using plug-ins to wordprocessing packages, authors only need to select the appropriate journal template when preparing their article and the list of references and citations to these will be formatted according to the journal style which is described below.

Reference style

Text: All citations in the text should refer to:

1. *Single author:* the author's name (without initials, unless there is ambiguity) and the year of publication;
2. *Two authors:* both authors' names and the year of publication;
3. *Three or more authors:* first author's name followed by 'et al.' and the year of publication.

Citations may be made directly (or parenthetically). Groups of references should be listed first alphabetically, then chronologically.

Examples: 'as demonstrated (Allan, 2000a, 2000b, 1999; Allan and Jones, 1999). Kramer et al. (2010) have recently shown'

List: References should be arranged first alphabetically and then further sorted chronologically if necessary. More than one reference from the same author(s) in the same year must be identified by the letters 'a', 'b', 'c', etc., placed after the year of publication.

Examples:

Reference to a journal publication:

Van der Geer, J., Hanraads, J.A.J., Lupton, R.A., 2010. The art of writing a scientific article. *J. Sci. Commun.* 163, 51–59.

Reference to a book:

Strunk Jr., W., White, E.B., 2000. *The Elements of Style*, fourth ed. Longman, New York.

Reference to a chapter in an edited book:

Mettam, G.R., Adams, L.B., 2009. How to prepare an electronic version of your article, in: Jones, B.S., Smith, R.Z. (Eds.), *Introduction to the Electronic Age*. E-Publishing Inc., New York, pp. 281–304.

Journal abbreviations source

Journal names should be abbreviated according to

Index Medicus journal abbreviations: <http://www.nlm.nih.gov/tsd/serials/lji.html>;

List of title word abbreviations: <http://www.issn.org/2-22661-LTWA-online.php>;

CAS (Chemical Abstracts Service): <http://www.cas.org/sent.html>.

Video data

Elsevier accepts video material and animation sequences to support and enhance your scientific research. Authors who have video or animation files that they wish to submit with their article are strongly encouraged to include these within the body of the article. This can be done in the same way as a figure or table by referring to the video or animation content and noting in the body text where it should be placed. All submitted files should be properly labeled so that they directly relate to the video file's content. In order to ensure that your video or animation material is directly usable, please provide the files in one of our recommended file formats with a preferred maximum size of 50 MB. Video and animation files supplied will be published online in the electronic version of your article in Elsevier Web products, including ScienceDirect: <http://www.sciencedirect.com>. Please supply 'stills' with your files: you can choose any frame from the video or animation or make a separate image. These will be used instead of standard icons and will personalize the link to your video data. For more detailed instructions please visit our video instruction pages at <http://www.elsevier.com/artworkinstructions>. Note: since video and animation cannot be embedded in the print version of the journal, please provide text for both the electronic and the print version for the portions of the article that refer to this content.

Supplementary data

Elsevier accepts electronic supplementary material to support and enhance your scientific research. Supplementary files offer the author additional possibilities to publish supporting applications, high-resolution images, background datasets, sound clips and more. Supplementary files supplied will be published online alongside the electronic version of your article in Elsevier Web products, including ScienceDirect: <http://www.sciencedirect.com>. In order to ensure that your submitted material is directly usable, please provide the data in one of our recommended file formats. Authors should

submit the material in electronic format together with the article and supply a concise and descriptive caption for each file. For more detailed instructions please visit our artwork instruction pages at <http://www.elsevier.com/artworkinstructions>.

Submission checklist

The following list will be useful during the final checking of an article prior to sending it to the journal for review. Please consult this Guide for Authors for further details of any item.

Ensure that the following items are present:

One author has been designated as the corresponding author with contact details:

- E-mail address
- Full postal address
- Telephone and fax numbers

All necessary files have been uploaded, and contain:

- Keywords
- All figure captions
- All tables (including title, description, footnotes)

Further considerations

- Manuscript has been 'spell-checked' and 'grammar-checked'
- References are in the correct format for this journal
- All references mentioned in the Reference list are cited in the text, and vice versa
- Permission has been obtained for use of copyrighted material from other sources (including the Web)
- Color figures are clearly marked as being intended for color reproduction on the Web (free of charge) and in print, or to be reproduced in color on the Web (free of charge) and in black-and-white in print
- If only color on the Web is required, black-and-white versions of the figures are also supplied for printing purposes

For any further information please visit our customer support site at <http://support.elsevier.com>.

Editorial timeline

The editors will make every effort to reach decisions on submitted papers within 4 weeks of the submission date. If revisions are a condition of publication, we generally allow two months for revisions and consider only one revised version of the paper. Evaluations of conceptual advance and significance are made based on the literature available on the day of the final decision, not the day of submission. Any major changes after acceptance are subject to review and may delay publication.

AFTER ACCEPTANCE

Use of the Digital Object Identifier

The Digital Object Identifier (DOI) may be used to cite and link to electronic documents. The DOI consists of a unique alpha-numeric character string which is assigned to a document by the publisher upon the initial electronic publication. The assigned DOI never changes. Therefore, it is an ideal medium for citing a document, particularly 'Articles in press' because they have not yet received their full bibliographic information. The correct format for citing a DOI is shown as follows (example taken from a document in the journal *Physics Letters B*):

doi:10.1016/j.physletb.2010.09.059

When you use the DOI to create URL hyperlinks to documents on the web, the DOIs are guaranteed never to change.

Proofs

One set of page proofs (as PDF files) will be sent by e-mail to the corresponding author (if we do not have an e-mail address then paper proofs will be sent by post) or, a link will be provided in the e-mail so that authors can download the files themselves. Elsevier now provides authors with PDF proofs which can be annotated; for this you will need to download Adobe Reader version 7 (or higher) available free from <http://get.adobe.com/reader>. Instructions on how to annotate PDF files will accompany the proofs (also given online). The exact system requirements are given at the Adobe site: <http://www.adobe.com/products/reader/tech-specs.html>.

If you do not wish to use the PDF annotations function, you may list the corrections (including replies to the Query Form) and return them to Elsevier in an e-mail. Please list your corrections quoting line number. If, for any reason, this is not possible, then mark the corrections and any other comments (including replies to the Query Form) on a printout of your proof and return by fax, or scan the pages and e-mail, or by post. Please use this proof only for checking the typesetting, editing, completeness and correctness of the text, tables and figures. Significant changes to the article as accepted for publication will only be considered at this stage with permission from the Editor. We will

do everything possible to get your article published quickly and accurately – please let us have all your corrections within 48 hours. It is important to ensure that all corrections are sent back to us in one communication: please check carefully before replying, as inclusion of any subsequent corrections cannot be guaranteed. Proofreading is solely your responsibility. Note that Elsevier may proceed with the publication of your article if no response is received.

Offprints

The corresponding author, at no cost, will be provided with a PDF file of the article via e-mail. For an extra charge, paper offprints can be ordered via the offprint order form which is sent once the article is accepted for publication. The PDF file is a watermarked version of the published article and includes a cover sheet with the journal cover image and a disclaimer outlining the terms and conditions of use.

Distribution of materials and data

One of the terms and conditions of publishing in *Molecular Oncology* is that authors be willing to distribute any materials and protocols used in the published experiments to qualified researchers for their own use. Materials include, but are not limited to, cells, DNA, antibodies, reagents, organisms, and mouse strains or, if necessary, the relevant ES cells. These must be made available with minimal restrictions and in a timely manner, but it is acceptable to request reasonable payment to cover the cost of maintenance and transport of materials. If there are restrictions to the availability of any materials, data, or information, these must be disclosed in the cover letter and the experimental procedures section of the manuscript at the time of submission. Nucleic acid and protein sequences, macromolecular structures determined by X-ray crystallography (along with structure factors), and microarray data must be deposited in the appropriate public database and must be accessible without restriction from the date of publication. An entry name or accession number must be included at the last paragraph of the Experimental Procedures section in the final version of the manuscript. Microarray data should be MIAME compliant (for guidelines see <http://www.mged.org/Workgroups/MIAME/miame.html>).

In addition to the information that must be deposited in public databases as detailed above, authors are encouraged to contribute additional information to the appropriate databases. Authors are also encouraged to deposit materials used in their studies to the appropriate repositories for distribution to researchers.

Open Archive

Molecular Oncology papers are freely available starting 12 months after publication.

AUTHOR INQUIRIES

For inquiries relating to the submission of articles (including electronic submission) please visit this journal's homepage. Contact details for questions arising after acceptance of an article, especially those relating to proofs, will be provided by the publisher. You can track accepted articles at <http://www.elsevier.com/trackarticle>. You can also check our Author FAQs (<http://www.elsevier.com/authorFAQ>) and/or contact Customer Support via <http://support.elsevier.com>.

© Copyright 2012 Elsevier | <http://www.elsevier.com>