

OPEN

A multigene and morphological analysis expands the diversity of the seabod shrimp *Xiphopenaeus* Smith, 1869 (Decapoda: Penaeidae), with descriptions of two new species

Abner Carvalho-Batista¹, Mariana Terossi², Fernando J. Zara³, Fernando L. Mantelatto⁴ & Rogerio C. Costa^{1*}

After being stable for nearly a century, the taxonomic history of the genus *Xiphopenaeus* has been marked by many changes in the last three decades. The taxonomic status of the Atlantic species has a low resolution, and many species are still undefined and grouped as cryptic species. Here we employed an integrative approach to define the species of *Xiphopenaeus* and the morphological characters needed to differentiate them. We combined the analyses of two molecular markers (COI and 16S rDNA), scanning electron microscopy and light microscopy. Based on specimens from 17 localities from the Atlantic and Pacific oceans, we detected five divergent genetic groups, three in the Atlantic (A1, A2, A3) and two in the Pacific (P1, P2). Male secondary sexual characters were able to differentiate four out of the five genetic groups. Group A1 corresponds to *X. kroyeri*, and A2 and A3 correspond to new species. We redescribed the genus: *Xiphopenaeus dincao* nov. sp. (A2) and *Xiphopenaeus baueri* nov. sp. (A3). Since the holotype of *X. riveti* was missing and the specimen analysed from group P2 was a female, the status of the species of *Xiphopenaeus* from the Pacific remains unresolved.

Cryptic species are two or more species considered as one due to their highly similar morphology¹. The discovery of cryptic species has been increasing in the last decades due to the development of molecular tools, which indicates that they might be more common in the animal kingdom than previously thought^{2,3}. An example of an unresolved taxonomic issue involving cryptic species occurs in penaeid shrimps of genus *Xiphopenaeus* Smith, 1869. This genus was described in 1869 based on the type-species *Xiphopenaeus hartii* Smith, 1869, whose individuals came from the south of Bahia, Brazil. Later, *X. hartii* became a junior synonym of *Penaeus kroyeri* Heller, 1862 from Rio de Janeiro, and named *Xiphopenaeus kroyeri* (Heller, 1862). For nearly 40 years *X. kroyeri* was the only known species of the genus. However, in 1907, a new species was described from the coast of Peru, *Xiphopenaeus riveti* Bouvier, 1907⁴. In 1969, the International Commission on Zoological Nomenclature (Opinion 864) changed the genus spelling to *Xiphopenaeus*⁵.

¹Laboratório de Biologia de Camarões Marinhos e de Água Doce (LABCAM), Departamento de Ciências Biológicas, Faculdade de Ciências, Universidade Estadual Paulista (UNESP), Av. Luiz Edmundo Carrijo Coube 14-01, 17033-360, Bauru, SP, Brazil. ²Laboratório de Carcinologia, Departamento de Zoologia, Instituto de Biociências, Universidade Federal do Rio Grande do Sul (UFRGS), Av. Bento Gonçalves, 9500, Agronomia, 91501-970, Porto Alegre, Rio Grande do Sul, Brazil. ³Laboratório de Morfologia de Invertebrados (IML), Departamento de Biologia Aplicada, CAUNESP and IEAMar, Universidade Estadual Paulista (UNESP), FCAV. Via de Acesso Prof. Paulo Donato Castellane km 05, 14884-900, Jaboticabal, SP, Brazil. ⁴Laboratório de Bioecologia e Sistemática de Crustáceos (LBSC), Departamento de Biologia, Faculdade de Filosofia, Ciências e Letras de Ribeirão Preto (FFCLRP), Universidade de São Paulo (USP), Av. Bandeirantes 3900, 14040-901, Ribeirão Preto, SP, Brazil. *email: rogerio.c.costa@unesp.br

Xiphopenaeus kroyeri has an Atlantic distribution from North Carolina (USA) down to Rio Grande do Sul (Brazil). *Xiphopenaeus riveti* occurs in the Pacific from Sinaloa (Mexico) to Paita (Peru)⁴. Due to the high morphological similarity between *X. kroyeri* and *X. riveti* their taxonomy remained controversial: *X. riveti* was considered as a variety of *X. kroyeri*, or its sister species^{6,7}. Perez-Farfante & Kensley⁴ revised the suborder Dendrobranchiata and considered *X. riveti* as a junior synonym of *X. kroyeri*. Thus, the genus was again considered monotypic and *X. kroyeri* its only valid species⁸. Gusmão *et al.*⁹ addressed the issue again, using molecular data from PCR/RFLP, isoenzyme polymorphisms and Cytochrome C Oxidase Subunit I sequences. They proposed the revalidation of *X. riveti* from the Pacific plus the existence of cryptic speciation in *Xiphopenaeus kroyeri*, which contained two entities they call: *Xiphopenaeus* sp. 1 and *Xiphopenaeus* sp. 2. These entities were not formally described, and neither were the morphological characters that could differentiate the species (synapomorphies). Eight years later, Piergiorgio *et al.*¹⁰ came to the same conclusions, also using molecular techniques, but once again, no definitive morphological characters were given to differentiate these entities. Recently, Kerkhove *et al.*¹¹, have detected *Xiphopenaeus* sp. 2 in north part of South America (Guiana and Caribbean Ecoregions), and pointed out differences in the colour of individuals between the two species.

Xiphopenaeus kroyeri sensu lato represents ~40% of the total shrimp fisheries in the Brazilian coast¹² and often accounts for 90% of the shrimp biomass captured in shallow waters, up to 20 m of depth^{13–15}. Moreover, the species is the second most important fishery resource of the southeast of Brazil, and the most targeted shrimp in the State of São Paulo, where the catch reach the maximum in early 1980s (8,905 tons) and then start to decrease until 2000 (629 tons), since then the biggest catch occurred in 2012 (3,258 tons)^{16–18}. However, in 2018 *X. kroyeri* becomes the most exploited fishery resource in this state (2,246 tons)¹⁹.

Naturally, given the commercial importance of this resource, *Xiphopenaeus kroyeri* sensu lato has been constantly studied, despite the lack of a definitive taxonomic solution to define and/or distinguish the entities that are known to exist (c.f. Gusmão *et al.*⁹, Piergiorgio *et al.*¹⁰). In the last 13 years, more than 50 articles have been published on diverse subjects — population biology, ecology, fishery biology, physiology, toxicology, sperm ultrastructure, bycatch — considering *X. kroyeri* as the only species of *Xiphopenaeus* in the Atlantic. Certainly, this was caused by the lack of knowledge on the morphological characters that could be used to differentiate the two species.

The correct taxonomic identification of important fishery resources is essential to enhance biodiversity knowledge and to develop adequate management and conservation strategies^{20–22}. Recently, the combination of molecular tools and the detailed morphological analyses of the reproductive structures has proved to be very effective to solve taxonomic problems and to differentiate and describe cryptic species of decapod crustaceans^{23,24}. Therefore, considering the controversial taxonomic history of *Xiphopenaeus* explained above and its high economic importance, here we employed an integrative analysis and combined molecular and morphological tools to characterize the species that constitute the genus *Xiphopenaeus*, based on specimens from 17 localities, 15 in the Atlantic and two in the Pacific cost of America. We provide a detailed redescription of the genus and the description of two new species.

Results

Molecular analysis. About 1,125 base pairs (bp), from our double-genes analyses, were used to construct the phylograms. A total of 91 sequences of the COI gene (barcoding region) were obtained. The final alignment had 596 base pairs. There were 111 variable sites: 11 in the 1st codon base, 2 in the 2nd, and 96 in the 3rd, and 93 variable sites were phylogenetically informative (Supplementary Fig. 1). The average nucleotide composition was: T = 33.7%, C = 20.8%, A = 27.4%, G = 18.1%. We obtained 15 sequences of the 16S gene. The final alignment had 529 base pairs. We detected 25 variable sites of which 16 were phylogenetically informative (Supplementary Fig. 2). An average nucleotide composition was: T = 31.0%, C = 21.6%, A = 34.7%, G = 12.8%. After adding the sequences of the four external group species, we obtained 179 variable sites, of which 81 were phylogenetically informative.

Phylogenetic analyses. Maximum likelihood phylogram based on the COI (barcoding region) gene indicated the existence of five groups, three from the Atlantic Ocean (A1, A2 and A3) and two from the Pacific (P1 and P2).

The phylogram of the concatenated COI and 16S sequences supported the same division into five groups (Figs. 1 and 2). Both trees show that P1 and P2 form a well-supported clade, which is a sister group of the clade formed by A2 and A3, while A1 forms an external clade regarding A2 and A3.

The comparison of our specimens with those of Gusmão *et al.*⁹, based on the Palumbi region of the COI gene²⁵, indicate that our clade A1 corresponds to *Xiphopenaeus* sp1, and clade A2 corresponds to *Xiphopenaeus* sp 2. Clade P2 corresponds to *Xiphopenaeus riveti*, and clades A3 and P1 are two genetic groups previously undetected (Fig. 3).

Genetic distances. The genetic distance within *Xiphopenaeus* regarding the COI gene varied from 0 to 13.5%, and the distance to the outgroups was 15.7–27.8%. There was a clear separation between groups, i.e., there was a low genetic distance within groups (0–1%) and a higher distance between groups. The lowest between-group distances were between A2 and A3, 2.7–3.3%, and the highest were 12.9–13.5%, between A1 and P2 (Fig. 4). Regarding the 16S gene, the genetic distance within *Xiphopenaeus* varied from 0.0 to 2.9%, and the distance to the outgroups varied from 7.3 to 38.1%. The results of the 16S corroborated the groups suggested by the COI, and the within-group distances were 0.0–0.4%. The lowest between-group distances occurred between A1 and P1 (1.0–1.2%), and the highest, between A3 and P2 (3.2–3.6%) (Fig. 5). Thus, based on COI and 16S genes, there is evidence of at least five genetic groups in *Xiphopenaeus*. Based on the combined analyses with morphological characters, two of these groups will be described below as new taxonomic entities.

Morphological assessment. *Gross Morphology.* In the gross morphological analyses, we used 79 individuals from 16 localities which had at least one of the genes sequenced. The comparative analysis of the carapace

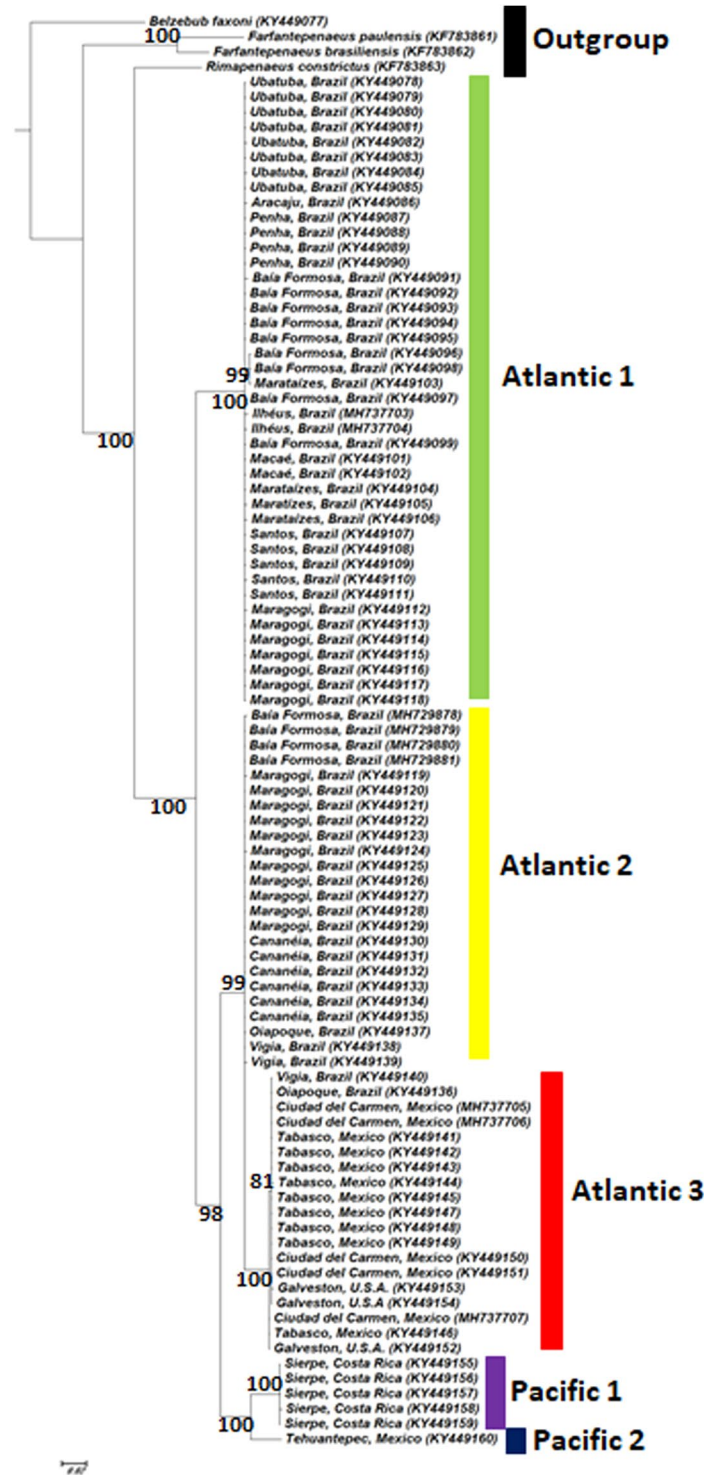


Figure 1. Maximum likelihood phylogram of 91 specimens of *Xiphopenaeus*, based on the COI gene (barcoding region). The numbers near the branches are bootstrap values (values lower than 50 are not shown).

(spine, grooves, and carinas), legs and mouthparts did not point to substantial variation capable to differentiate the genetic groups. The number of rostral teeth varied from four to six, but most individuals had five, irrespectively of the group. Individuals bearing four were seen only in groups P1 and A3, while six teeth were seen only in groups A1 and A2. There was individual variation regarding the teeth shape, rostrum length (in relation to the carapace), groove and carina depth, but they did not lead to a separation of the groups. The presence and size of the teeth of the dorsomedial carina in the fourth, fifth, and sixth abdominal segments also varied. Although in A1 they were smaller and less frequent, this character was also not enough to separate the groups.

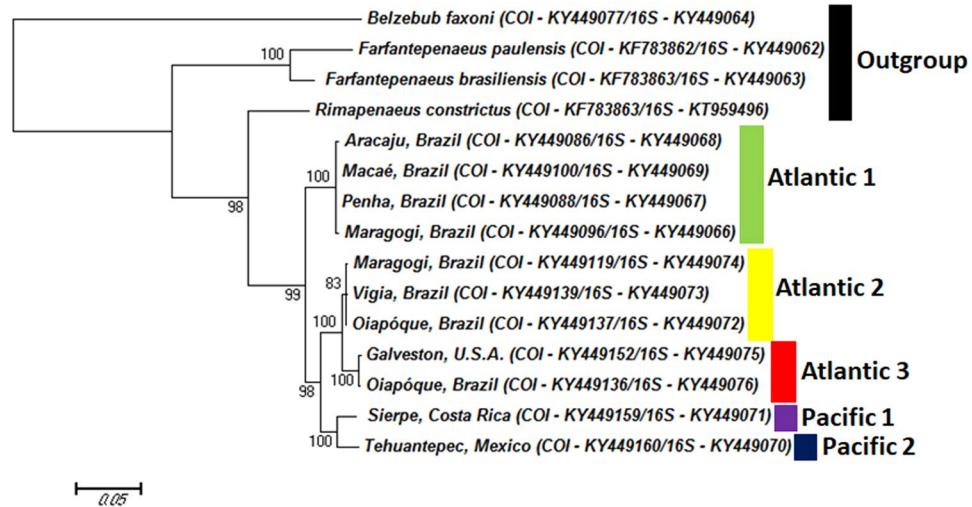


Figure 2. Maximum likelihood phylogram of 16 specimens of *Xiphopenaeus*, based on the concatenated and partitioned sequences of the genes COI (barcoding region) and 16S. The numbers near the branches are bootstrap values (values lower than 50 are not shown).

The petasma and *appendix masculina*, however, were much more informative and separated the individuals according to the genetic groups. Thus, we decided to update the general description of *Xiphopenaeus* given by Perez-Farfante & Kensley⁴ adding a detailed redescription of these two male structures. The description of the *appendix masculina* is given for the first time on the literature on *Xiphopenaeus*.

Systematics.

Suborder Dendrobranchiata Spence Bate, 1888

Superfamily Penaeoidea Rafinesque-Schmaltz, 1815

Family Penaeidae Rafinesque-Schmaltz, 1815

Xiphopenaeus Smith, 1869

Penaeus – Heller, 1862, Sber. Akad. Wiss. Wien, 45(1): 425.

Xiphopenaeus Smith, 1869, Trans. Conn. Acad. Arts Sci., 2(1): 27. For details see Perez-Farfante & Kensley (1997), p. 149–152.

Redescription of the genus *Xiphopenaeus*. Integument glabrous. Rostrum long, considerably overreaching antennular peduncle, usually longer than carapace in adults, sinuous, styliform anteriorly; armed with dorsal teeth only, situated basally; epigastric tooth distinctly separated from first rostral. Carapace with orbital angle well marked, antennal, and hepatic spines present; pterygostomian angle produced but lacking spine; postocular sulcus well marked; clearly distinct orbito-antennal sulcus; short, almost indistinct cervical sulcus, clearly distinct orbito-antennal sulcus; hepatic sulcus and sharp hepatic carina reaching only base of pterygostomian region and posteriorly merging with long branchiocardiac sulcus and carina, respectively; longitudinal suture extending to about mid length of carapace, transverse suture lacking (in adults). Abdomen with sixth somite bearing interrupted cicatrix. Telson unarmed. Antennule lacking parapeneaid spine; antennular flagella long, dorsal (twice or more as long as carapace) longer than ventral. Palp of first maxilla entire, gradually tapering distally, produced into small, triangular, setose proximolateral lobule, broad, setose proximomesial and quite small, acute setose distomesial lobules, latter armed with slender spine; distolateral row of small spines present on ventral surface. Fourth and fifth pereopods long, much longer than third, subflagelliform, each with multiarticulate dactyl. Basial and ischial spines on first pereopod only.

Thelycum closed, with single plate of sternite XIV smooth, broad, not produced anteriorly into pair of flaps, its anterolateral hoods much reduced; anterior sternal invagination nearly as broad as sternite, forming spacious pocket extending as far as posterior thoracic ridge; median protuberance of sternite XIII also broad but quite short. Paired seminal receptacles (spermatheca) is bilobed, each consisting of large posterior lobe and small anterolateral one; sinuous slit-like opening lying on anterior end of posterior lobe, connecting with median pocket and extending laterally dorsal to posterolateral extremity of median protuberance.

General description of petasma and *appendix masculina* of the genus *Xiphopenaeus*. Petasma formed by the union of the endopods of the first pleopod pair, joining the two dorsolateral lobes by the cincinuli (Fig. 6B), and bearing a horn-like distolateral projection (DLP) (Fig. 6A). The distolateral projection has two regions. The proximal region extends from the endopod junction until 2/3 or 3/4 of the distolateral projection length (depending on the species). The distal region, which is oblique to the proximal, bears the opening; its posterior surface is covered by a row of teeth whose morphology varies in each species (Fig. 6A).

The *appendix masculina* is subcircular (Fig. 6C) and has a rounded projection whose posterior margin that varies in length and is oriented towards the body midline. The dorsal surface is smooth (Fig. 6C); the central region of the ventral face is concave or convex and has rows of spines with varied distribution (Fig. 6D). Both characters vary depending on the species, and the species-specific descriptions are given below.

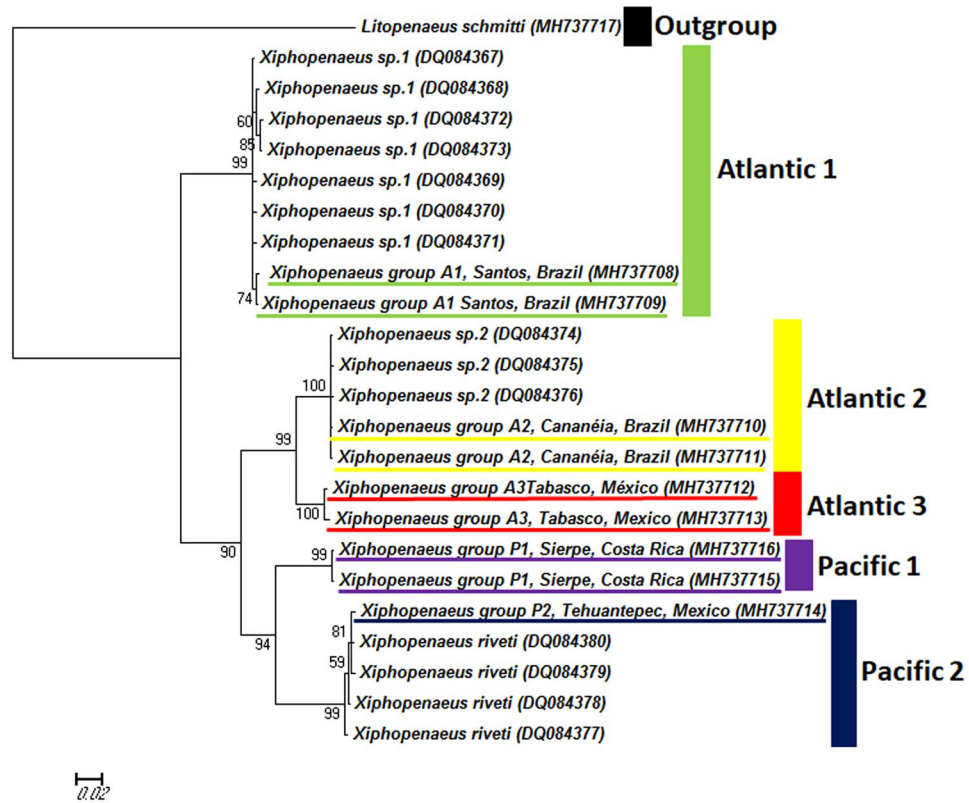


Figure 3. Maximum likelihood phylogram of specimens of *Xiphopenaeus* based on the COI gene (Palumbi region), including the specimens from our study assigned to the five genetic groups (underlined) and the sequences from Gusmão *et al.* (2006).

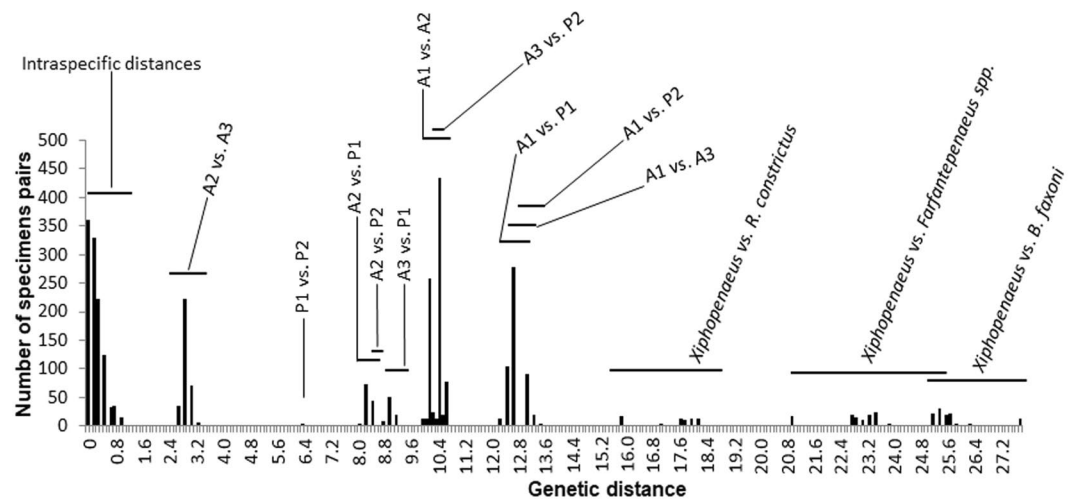


Figure 4. Histogram of the pairwise genetic distances (Kimura-2-parameters) for the COI gene (barcoding region), within *Xiphopenaeus*, and between *Xiphopenaeus* and the outgroups. The lines above the bars indicate the range of values found in the pairwise comparisons between the groups revealed in the previous analyses. A1: Atlantic 1, A2: Atlantic 2, A3: Atlantic 3, P1: Pacific 1, P2: Pacific 2.

Xiphopenaeus kroyeri (Heller, 1862) (Figs. 7–9).

Penaeus Kroyeri Heller, 1862b: 425; Plate 2, fig. 51. [Rio Janeiro]

Xiphopenaeus hartii Smith, 1869: 27, 40; Plate 1, Fig. 1. [Caravelas, Estado da Bahia, Brazil]

Material examined. Holotype: Rio de Janeiro, 1♂, col. Kröyer, NHMW 342 (Fig. 9).

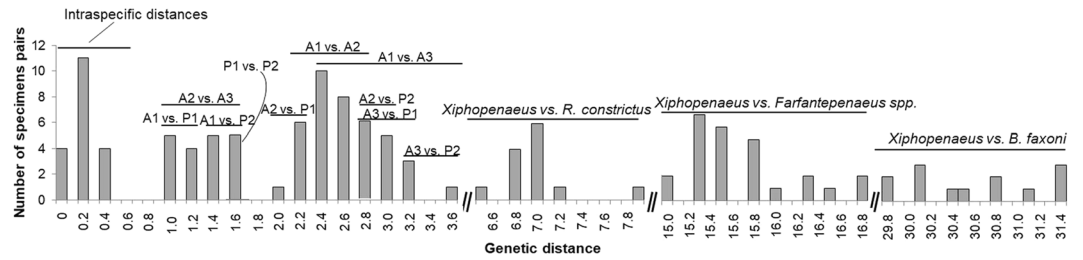


Figure 5. Histogram of the pairwise genetic distances (Kimura-2-parameters) for the 16S gene (barcoding region), within *Xiphopenaeus*, and between *Xiphopenaeus* and the outgroups. The lines above the bars indicate the range of values found in the pairwise comparisons between the groups revealed in the previous analyses. A1: Atlantic 1, A2: Atlantic 2, A3: Atlantic 3, P1: Pacific 1, P2: Pacific 2.

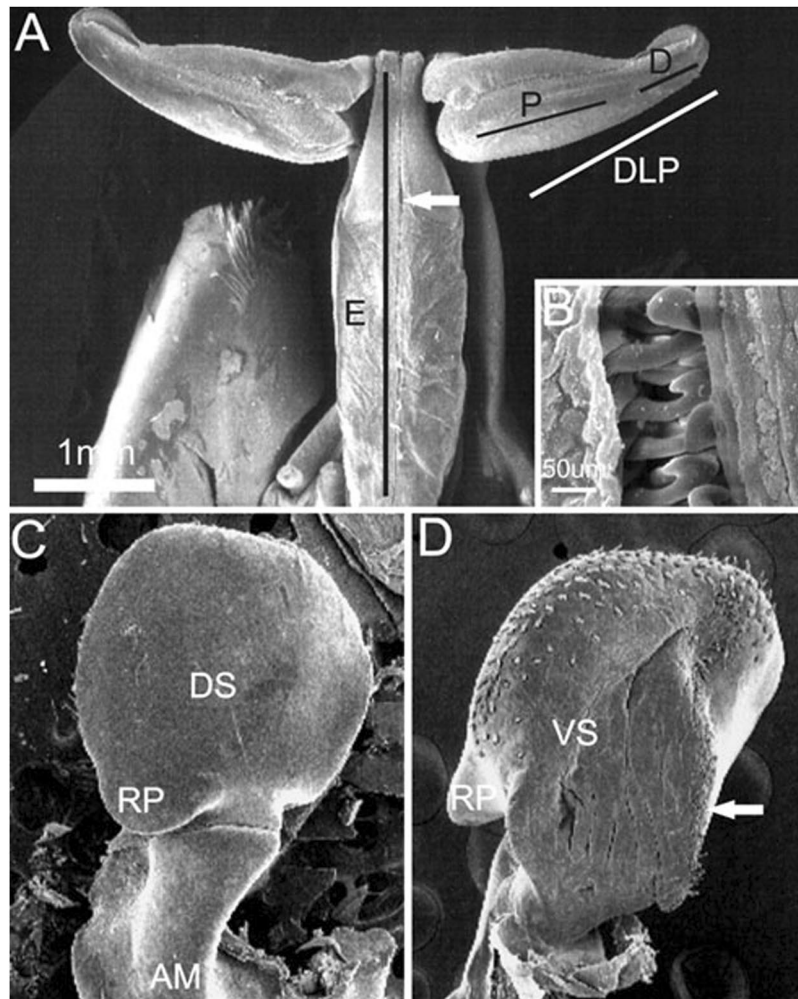


Figure 6. Scanning electron microphotographs showing the general morphology of the secondary sexual characters of *Xiphopenaeus*. A, *Xiphopenaeus dincao* nov. sp. (CCDB 6499): petasma (E - endopod; DLP - distolateral projection; P - proximal region of the DLP; D - distal region of the DLP); B, *Xiphopenaeus dincao* nov. sp. (CCDB 6499): junction between the endopods with cincinuli (seta); C, *Xiphopenaeus kroyeri* (CCDB 5019): appendix masculina in dorsal view (DS - dorsal surface; RP - rounded projection); D, *Xiphopenaeus kroyeri* (CCDB 5019): appendix masculina in ventral view (VS - ventral surface; RP - rounded projection; white arrow indicating the row of spines of the posterior margin).

Additional material. Brazil: Rio Grande do Norte, Baía Formosa, 06°21'23,3''S – 35°00'24,7''W, 25/IV/2014, col. M. Lopes & A. Carvalho-Batista, 6♂, 3♀ (CCDB 5337) – Alagoas, Maragogi, Praia de Maragogi, 09°00'48,59''S – 35°13'14,46''W, 05/X/2013, col. F.L. Mantelatto & F.B. Mantelatto, 1♂, 3♀ (CCDB 5338) - Sergipe, Aracaju, Praia do Atalaia, 26/VII/2013, col. G.L. Hirose, 1♀ (CCDB 5246) – Espírito Santo, Marataízes, 20°59'S – 40°47'W, 20/

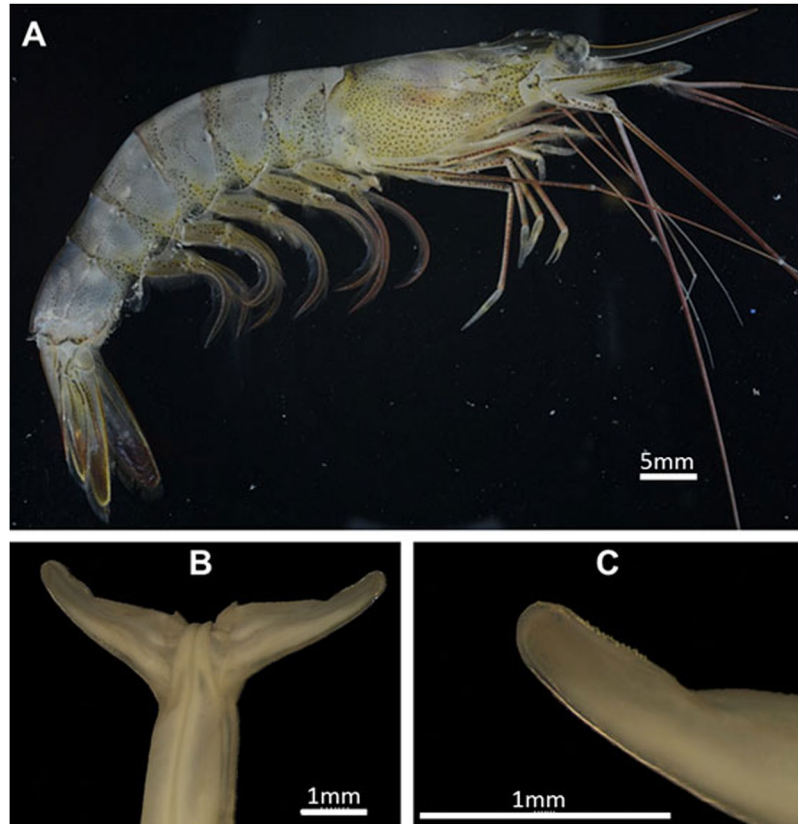


Figure 7. *Xiphopenaeus kroyeri* (Heller, 1862) (A) Lateral view (specimen ULLZ 15974); male; Ubatuba, São Paulo, Brazil. Photo: Darryl L. Felder; (B) Dorsal view of petasma (specimen CCDB 5019); (C) Detail of the right distolateral projection (specimen CCDB 5019).

VI/2012, Col. F.L. Carvalho, D. Peiró & R. Robles, 3♂, 1♀ (CCDB 3985) – Rio de Janeiro, Macaé, 22°23,44'S – 41°44,57'W, 21/VII/2014, R.C. Costa *et al.*, 3♂ (CCDB 5339) – São Paulo, Ubatuba, Praia do Cedro, 23°32'38,4''S – 45°09'54''W, 22/VII/2013, R.C. Costa *et al.*, 4♂ (CCDB 5019) – Santos, 24°04'55''S – 46°16'56,8''W, 24/X/2011, R.C. Costa *et al.*, 2♂, 2♀ (CCDB 3663) – Santa Catarina, Penha, V/2014, R.C. Costa *et al.*, 3♂, 1♀ (CCDB 5292).

Morphological characterization to be used in comparisons with other species. Petasma: In dorsal view, the posterior margin of the proximal region of the distolateral projection is straight (Figs. 7B, 8A). The distal region extends through 1/3 of the distolateral projection length and forms an obtuse angle towards the central-posterior part of the petasma (Figs. 7B,C, 8A,B). The opening is narrow and long and crevice-like and bears a row of upright teeth in the posterior margin, which is straight (Figs. 7C, 8B). In ventral view, the row of teeth of the distal region posterior margin forms a carina; the part of the carina next to the endopod is more evident (Fig. 8C,D).

Appendix masculina subcircular with a rounded projection towards the body median part and bearing two spines in the dorsal surface (Fig. 8E,F). The posterior margin of the ventral surface is covered by small sparse spines, with a few rows in the central convex region (Fig. 8G,H).

Type locality. Rio de Janeiro, State of Rio de Janeiro, Brazil

Distribution. Colombia, Venezuela, Guyana, Suriname, French Guyana, Brazil (Maranhão, Rio Grande do Norte, Alagoas, Sergipe, Bahia, Espírito Santo, Rio de Janeiro, São Paulo, Santa Catarina).

Remarks. The comparison with the holotype of *Xiphopenaeus kroyeri*, deposited in the Museum of Natural History of Vienna (Austria), indicated that this species corresponds to our clade A1 and also to *Xiphopenaeus* sp.1 detected by Gusmão *et al.*⁹ Based on the material examined here, this species seems to be the very abundant. It was the most abundant species in almost all localities of the northern, southern, and southeastern coasts of Brazil.

***Xiphopenaeus dincao* nov. sp.** (Figs.10 and 11).

Xiphopenaeus sp. 2 — Gusmão *et al.* 2006: 491, 496–500, Figs 3–5; Kerkhove *et al.* 2019: 853–858, Figs 1–5.

Xiphopenaeus sp. II — Piergiorgio *et al.* 2014: 349–353, Figs 2–3.

Holotype. Brazil: Alagoas, Maragogi, Praia de Maragogi, 09°00'48.59''S – 35°13'14.46''W, 05/X/2013, col. F.L. Mantelatto & F.B. Mantelatto, 1♂ (MZUSP 39350).

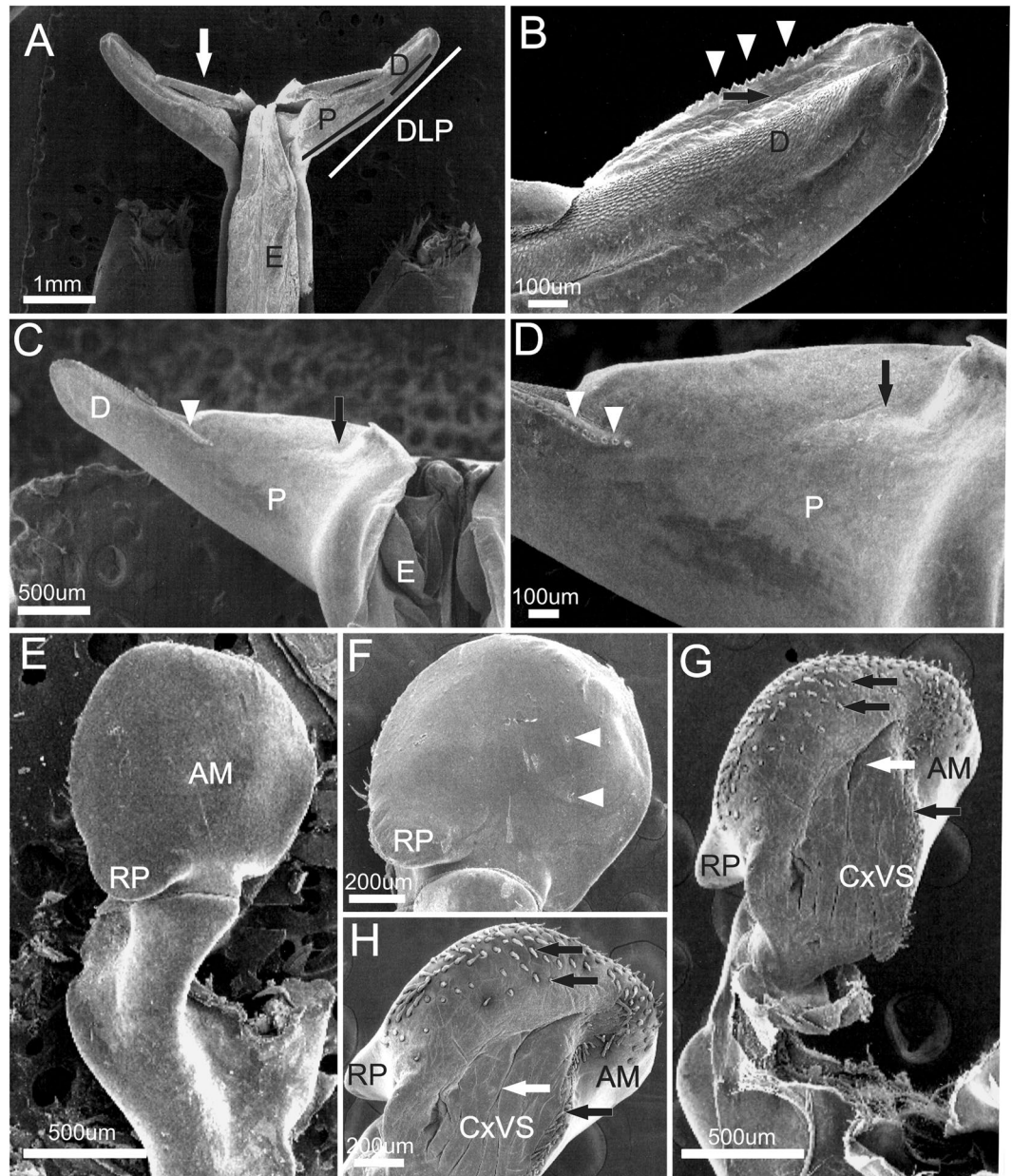


Figure 8. Scanning electron microscopy. Brazil: São Paulo, Ubatuba. 4♂ (CCDB 5019). Male secondary sexual characters of *Xiphopenaeus kroyeri*. (A) petasma in dorsal view; the white arrow indicates the posterior margin of the distolateral projection; (B) distal region of the distolateral projection; white arrowheads indicate the teeth; black arrows indicate the petasma opening; (C) distolateral projection in ventral view; white arrowheads indicate the row of teeth of the distal region of the distolateral projection; the black arrow indicates the carina of the proximal region of the distolateral projection; (D) detailed ventral view of distolateral projection; white arrowheads indicate the row of teeth of the distal region of the distolateral projection; the black arrow indicates the carina of the proximal region of the distolateral projection; (E) *Appendix masculina* in dorsal view; (F) *Appendix masculina* in dorsal view; white arrowheads indicate the spines; (G) *Appendix masculina* in ventral view; the black arrow indicates the row of spines of the posterior margin, white arrows indicate the convex central region; (H) *Appendix masculina* in ventral view; the black arrow indicates the row of spines of the posterior margin, white arrows indicate the convex central region.

Paratypes. Brazil: Alagoas, Maragogi, Praia de Maragogi, 09°0′48.59″S – 35°13′14.46″W, 05/X/2013, col. F.L. Mantelatto & F.B. Mantelatto, 5♂, 2♀ (CCDB 6499) - São Paulo, Cananéia, X/2014, R.C. Costa, 2♂, 5♀ (CCLC 418).

Additional material examined. Brazil: Amapá, Oiapoque, Estuário do Rio Oiapoque, Parna Cabo Orange, 04°22′17.6″N–51°24′26.4″W, 22/VIII/2013, col. I.M. Vieira, A.G. Santiago & E.G. Oliveira, 1♂ (IEPA 1618) – Pará, Vigia, Ponta Seca, 0°51′45.00″S – 48°7′50.00″W, 19/XI/1994, col. M.P. Barros, 2♂ (MCP 2024).

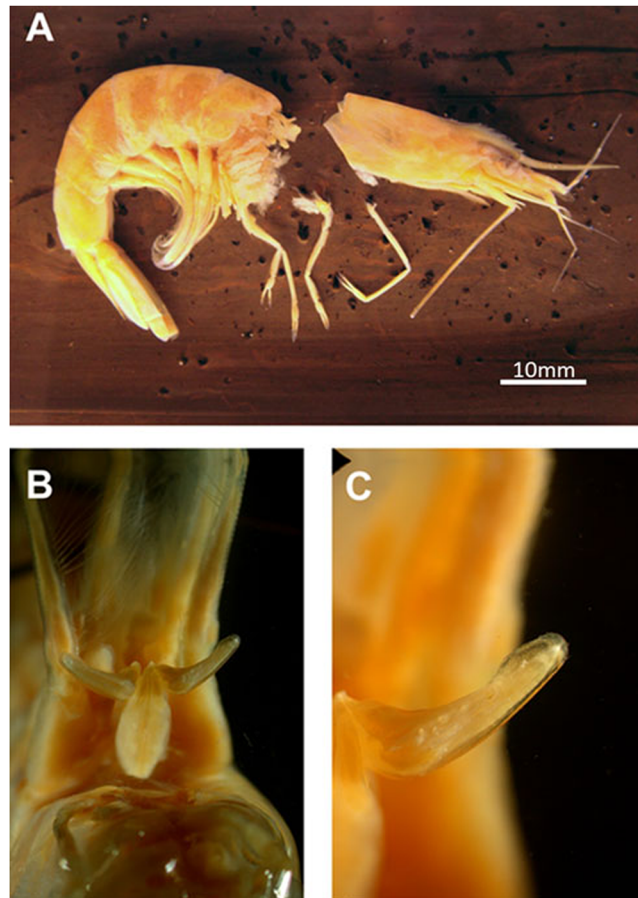


Figure 9. Holotype of *Xiphopenaeus kroyeri* (Heller, 1862): NHMW 342, Rio de Janeiro, Brazil collected by Kröyer, male. (A) lateral view; (B) Petasma in dorsal view; (C) detail of the right distolateral projection. Photos by Peter Dworschak.

Description. Petasma: In dorsal view, the proximal region occupies 3/4 of the distolateral projection length (Figs. 10B, 11A), with rounded posterior margin (Figs. 10A,B, 11A,B). The distal region is as long as wide and bears a convex row of teeth and the opening, which is wide and rounded (Figs. 10C, 11B). In ventral view the row of teeth of the posterior margin enters the proximal region but ends abruptly before its wider portion. In this species the carina of the ventral surface of the proximal region is absent (Fig. 11C,D). In dorsal view the *appendix masculina* is subcircular but less rounded than in *X. kroyeri* and its protruding tip has many spine rows (Fig. 11E,F). The posterior rounded projection is longer and narrower than in *X. kroyeri*. In ventral view the spines are more prominent in the margins and become smaller over the central convex region (Fig. 11G,H).

Etymology. The specific epithet “dincao” is given in the honour of the late Dr. Fernando D’Incao, in recognition of his contribution to the Brazilian Carcinology, in particular to the study of penaeoid shrimps from the Brazilian coast. It is to be treated as a noun in apposition.

Type locality. Maragogi, Alagoas, Brazil.

Distribution. Colombia¹¹, Suriname¹¹, French Guiana¹¹, Brazil^{9,10} and present study (Amapá, Pará, Rio Grande do Norte, Alagoas, Bahia, São Paulo).

Remarks. This species refers to the specimens of clade A2, previously known as *Xiphopenaeus* sp. 2^{9–11}. Besides the description, this is the first record of this taxon to Amapá, Pará and Alagoas. Despite the vast list of works in the literature that studied biology of *X. kroyeri*, it was not possible to identify in which of these studies were used specimens of the described new species and thus the synonymic list was short.

***Xiphopenaeus baueri* nov. sp.** (Figures 12–13).

Holotype. Mexico: Tabasco, 18°31′40.25″N – 93°19′43.95″W, 05/XI/2014, col. Ku, M.A.M., 1♂ (MZUSP 39351).

Paratypes. Mexico: Tabasco, 18°31′40.25″N – 93°19′43.95″W, 05/XI/2014, col. Ku, M.A.M., 5♂, 3♀ (CCDB 5461).

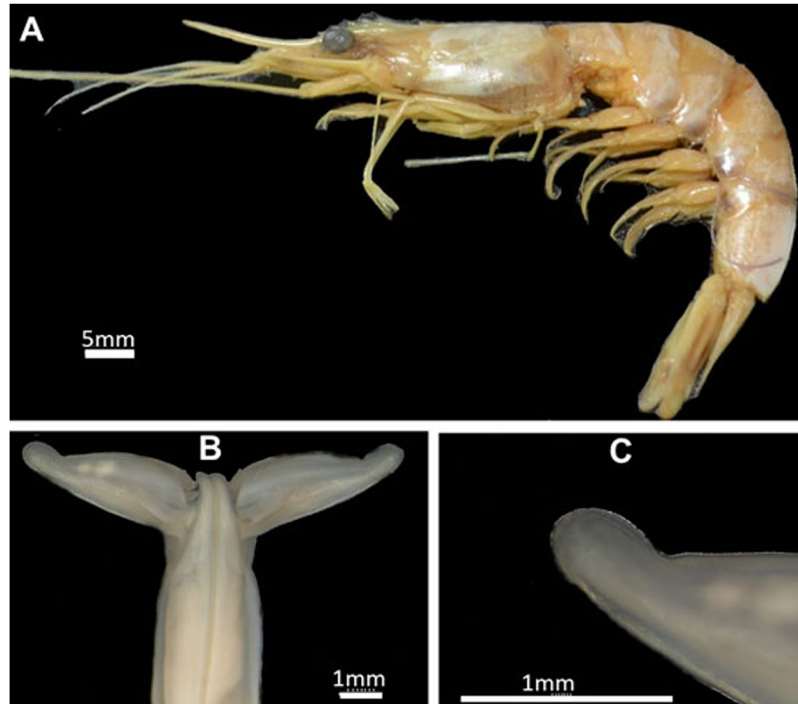


Figure 10. *Xiphopenaeus dincao* nov. sp. (A) Lateral view of the holotype (MZUSP 39350), male, Maragogi, Alagoas, Brazil. (B) Petasma in dorsal view; (C). Detail of the right distolateral projection. Photos by Julia Fernandes Perroca.

Additional material examined. USA: Isle Dernier, Louisiana, 16/XI/1992, col. Bauer R.T., 3♂ (CCDB 5394) – Puerto Rico: Mayagüez Bay, XII/1985, col. R.T. Bauer (CCLC 0417). Brazil: Amapá, Oiapoque, Estuário do Rio Oiapoque, Parna Cabo Orange, 04°22′17.6″N – 51°24′26.4″W, 22/VIII/2013, col. I.M. Vieira, A.G. Santiago & E.G. Oliveira, 1♀ (IEPA 1617) – Pará, Vigia, Ponta Seca, 0°51′45.00″S – 48°7′50.00″W, 19/XI/1994, col. M.P. Barros, 1♀ (MCP 2024).

Description. Petasma: In dorsal view, the proximal region occupies 3/4 of the distolateral projection length, posterior margins slightly rounded (Figs. 12B, 13A). The distal region extends for 1/4 of the distolateral projection length. The opening is wide and rounded, with a convex row of teeth (Figs. 12C, 13B). In ventral view, the row of teeth of the distal region of the posterior margin invades the proximal region and becomes sparser until it reaches its wider part (Fig. 13C,D). In this species the carina in the ventral surface of the proximal region is absent (Fig. 13C,D). The *appendix masculina* is subcircular but less rounded than in *X. kroyeri* (Fig. 13E,F) and has no prominent apex, but its posterior margin is covered with spines. The rounded projection is the widest of all species. In ventral view there are several rows of spines which cover the central convex region completely (Fig. 13G,H).

Etymology. The new species is named in the honour of our colleague Dr. Raymond Bauer, a recognized carcinologist who has devoted his career to the study of the biology of caridean shrimps, especially from Gulf of Mexico, the type locality of the new species herein described.

Type locality. Tabasco, Mexico.

Distribution. Mexico (Tabasco), USA (Louisiana, Texas); Puerto Rico, Brazil (Amapá, Pará).

Remarks. The individuals of our clade A3 correspond to a new species, undetected in previous studies. The shape of the petasma is very similar to that of *Xiphopenaeus dincao* nov. sp. The main character that differentiates these two species is the ventral surface of the *appendix masculina* covered with spines in *Xiphopenaeus baueri* nov. sp. The two species seem to occur in sympatry, at least in the north of Brazil, which may hamper their differentiation. In the Gulf of Mexico, however, *Xiphopenaeus baueri* nov. sp. is the only known species of *Xiphopenaeus*. Despite the vast list of works in the literature that studied biology of *X. kroyeri*, it was not possible to identify in which of these studies were used specimens of the described new species and thus the synonymic list was not provided.

***Xiphopenaeus riveti* - P1.** **Material examined.** Costa Rica: Puntarenas, Sierpe, Terraba, GPS coordinates unknown, VI/2013, J.S. Vargas, 4♂, 1♀ (CCDB 5247).

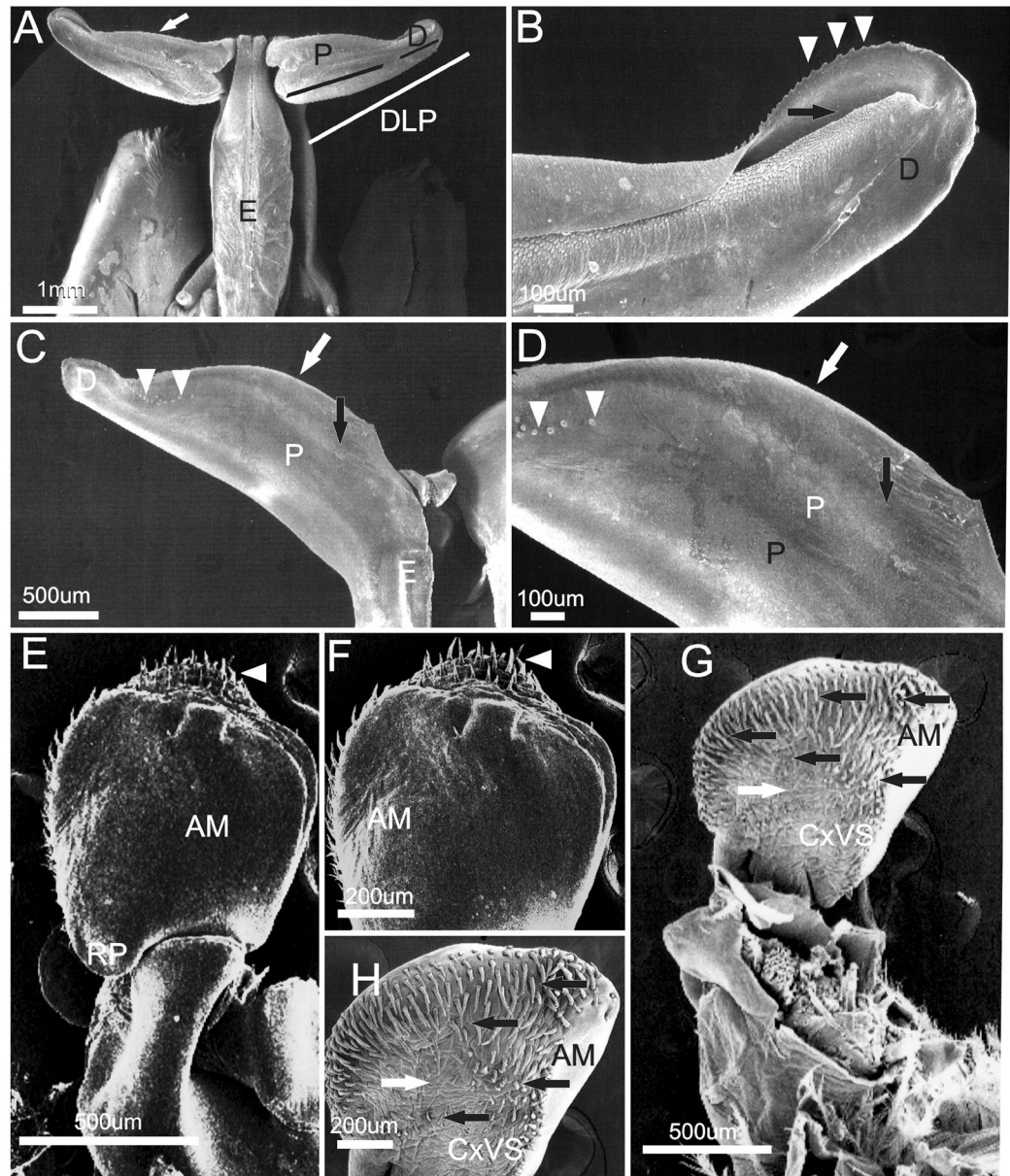


Figure 11. Scanning electron microscopy. Brazil: Alagoas, Maragogi, 3♂ (CCDB 6499), 1♂ (MZUSP 39350). Male secondary sexual characters of *Xiphopenaeus dincao* nov. sp. (A) petasma in dorsal view; the white arrow indicates the posterior margin of the distolateral projection; (B) distal region of the distolateral projection; white arrowheads indicate the teeth; black arrows indicate the petasma opening; (C) distolateral projection in ventral view; white arrowheads indicate the row of teeth of the distal region of the distolateral projection; the black arrow indicates that the carina of the proximal region of the distolateral projection is absent; (D). Detailed ventral view of distolateral projection; white arrowheads indicate the row of teeth of the distal region of the distolateral projection; the black arrow indicates the carina of the proximal region of the distolateral projection is absent; (E) – *Appendix masculina* in dorsal view; (F) *Appendix masculina* in dorsal view; white arrowheads indicate the spines; (G) *Appendix masculina* in ventral view; the black arrow indicates the row of spines of the posterior margin, white arrows indicate the central convex region; (H) – *Appendix masculina* in ventral view; the black arrow indicates the row of spines of the posterior margin, white arrows indicate the central convex region.

Description. Petasma: in dorsal view the proximal region occupies 2/3 of the distolateral projection length and the posterior margin is strongly rounded (Fig. 14A). Opening narrow and long with a row of teeth slightly rounded (Fig. 14B). In ventral view, the row of teeth of the posterior margin reaches 3/4 of the proximal region of the distolateral projection and goes through the margins of a well-defined carina that occupies the entire proximal region of the distolateral projection (Fig. 14C,D). *Appendix masculina* subcircular (Fig. 14E,F); the rounded projection is more elongated than in *X. kroyeri* but less than in *Xiphopenaeus baueri* nov. sp.; the posterior distal margin has few spines. In ventral view, the posterior margin is densely covered by long spines; the concave central region of the ventral surface lacks spines (Fig. 14G,H).

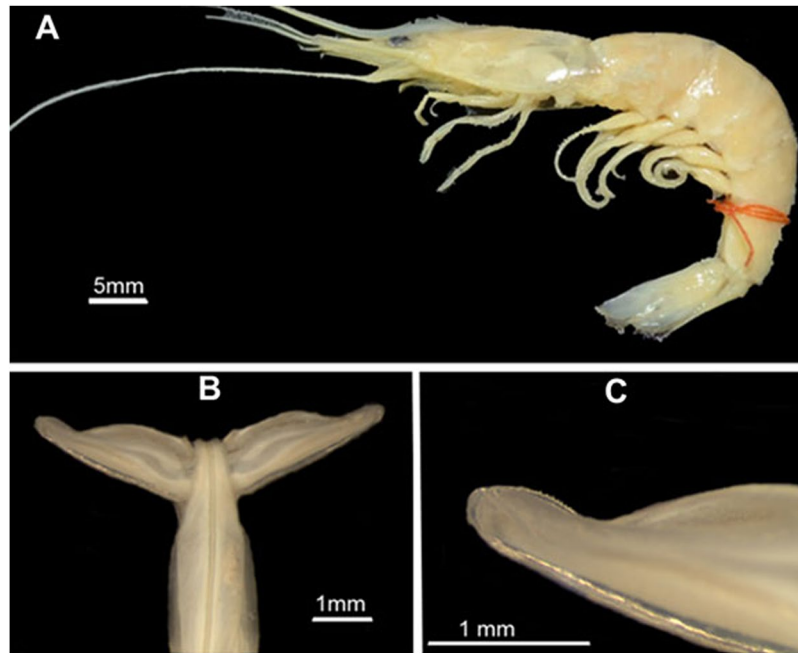


Figure 12. *Xiphopenaeus baueri* nov. sp.; (A) Lateral view of the holotype (MZUSP 39351), male, Tabasco, Mexico; (B) Petasma in dorsal view; (C) Detail of the right distolateral projection. Photo by Julia Fernandes Perroca.

Discussion

Our results revealed that the genus *Xiphopenaeus* is composed of at least five species, distributed along the American continental coasts. A division of the genus in three species, including *X. riveti* and a new species from the Atlantic, was suggested previously^{9,10}, without a formal taxonomic and nomenclatural record and a detailed description. However, these studies were restricted to the South American coast and one locality from the Pacific. Thus, besides supporting the revalidation of *X. riveti* and a species from the Atlantic (*Xiphopenaeus dincao* nov. sp.), our study also indicates the existence of a third species from the Atlantic (*Xiphopenaeus baueri* nov. sp.) and at least two entities from the Pacific. This last species (group P2) could not be described since only a female was available, and diagnostic morphological characters from the petasma are needed.

The use of molecular tools, in addition to the morphological ones, was extremely useful to strengthen and deepen our study, which confirms their usefulness in the taxonomic identification and to solve taxonomic and phylogenetic problems^{23,26–30}. The between-group distances resulting from the phylogenetic analyses of COI and 16S were in the range of interspecific distances expected in decapods. Moreover, the genetic groups were supported by morphological differences in the male secondary sexual characters. Within the order Decapoda, the highest intraspecific distances known for the COI gene (barcoding region) are ~2%, while the interspecific distances between congeneric species are usually higher than 5%, reaching 10% in many cases, and even more than 30%^{31,32}. For instance, in shrimps of the family Penaeidae from the coast of Egypt and in species of the genus *Farfantepenaes*, the interspecific distances varied from 3 to 20%^{33,34}. Thus, most interspecific distances detected here are above the threshold used to separate congeneric species based on the barcoding region.

The genetic distance between *Xiphopenaeus dincao* nov. sp. and *Xiphopenaeus baueri* nov. sp. for the COI gene are in between the intraspecific and interspecific thresholds of Decapoda. Even though intraspecific distances of up to 2.7% were reported for the penaeid shrimp *Artemesia longinaris* Spence Bate, 1888, it was less than 1% in other Atlantic Dendrobranchiata shrimps, such as *Pleoticus muelleri* (Spence Bate, 1888), *Farfantepenaes paulensis* (Pérez-Farfante, 1967), *Farfantepenaes brasiliensis* (Latreille, 1817), and *Farfantepenaes subtilis* (Pérez-Farfante, 1967)^{22,35–38}.

The intraspecific distances (0.0–0.2% in *Xiphopenaeus dincao* nov. sp.; 0.0–0.3% in *Xiphopenaeus baueri* nov. sp.) were much lower than the interspecific (2.7–3.3%), thus, there is a well-defined intraspecific gap. The DNA Barcoding technique uses this gap to identify the species^{39–43}, and prove to be effective in the case of *Xiphopenaeus*.

The 16S gene is more conserved than the COI and has a low, or none intraspecific variation in decapod crustaceans. Moreover, in penaeid shrimps, the known interspecific distances between congeneric species are ~1%^{44,45}. Nonetheless, our analysis of the 16S supported the genetic groups as distinct species, including the differentiation between *Xiphopenaeus dincao* nov. sp. and *Xiphopenaeus baueri* nov. sp.

The existence of a second species besides *X. riveti* in the Pacific (group P2) is an interesting and novel result since it has been undetected in previous studies. Unfortunately, we obtained DNA sequences only from a female from Tehuantepec, Mexico, warranting further descriptions. However, the genetic distances between P2 and the other Pacific specimens (P1), from Sierpe, Costa Rica, reinforce the idea that these two groups are indeed two distinct species. Further studies, with a more comprehensive sampling including more localities are needed to understand their geographic range in the Pacific. There is likely an overlap in the distribution range of these

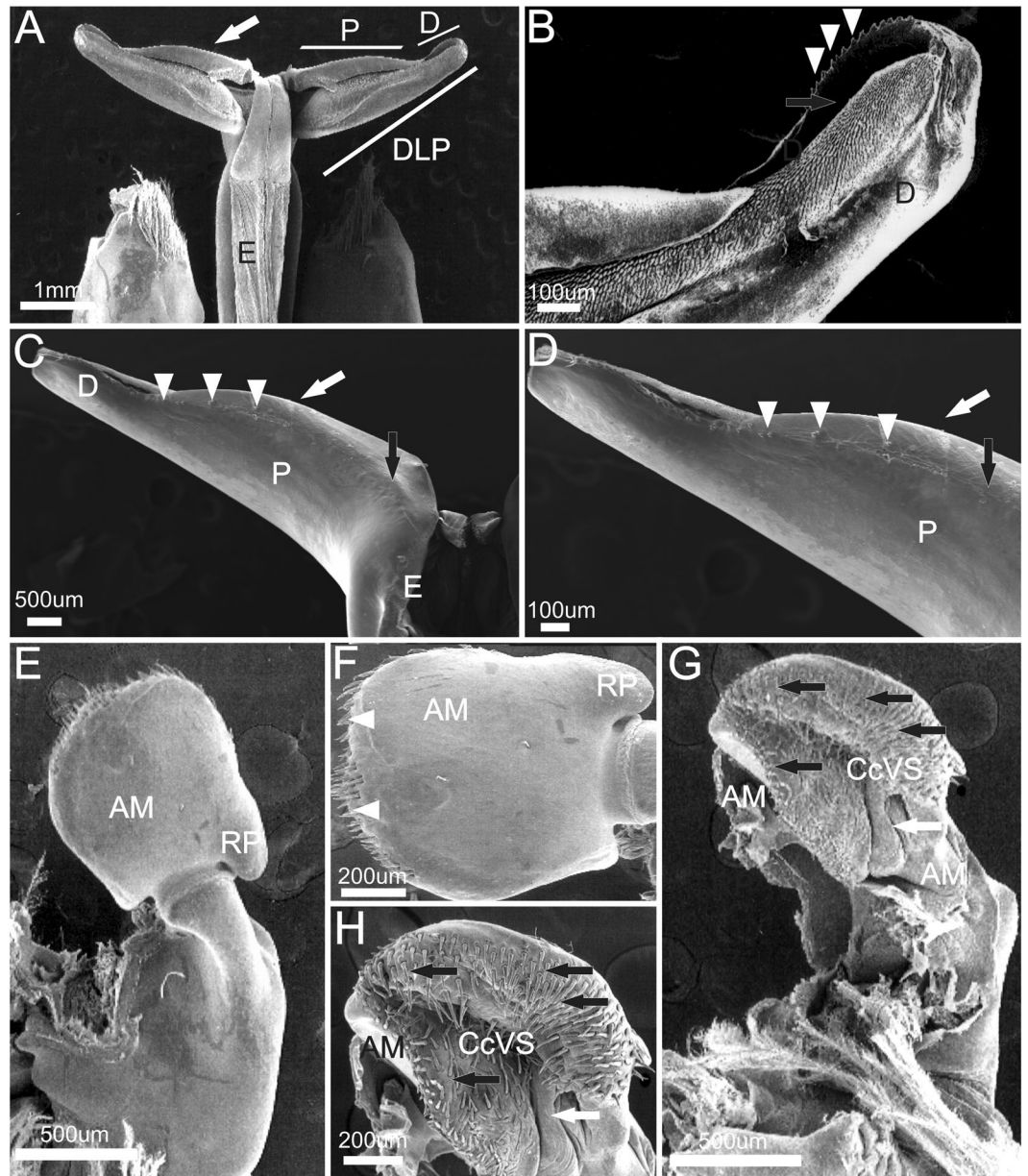


Figure 13. Scanning electron microscopy. Mexico: Tabasco, 3♂ (CCDB 5461), 1♂ (MZUSP39351). Male secondary sexual characters of *Xiphopenaeus baueri* nov. sp. (A) petasma in dorsal view; the white arrow indicates the posterior margin of the distolateral projection; (B) distal region of the distolateral projection; white arrowheads indicate the teeth; black arrows indicate the petasma opening; (C) distolateral projection in ventral view; white arrowheads indicate the row of teeth of the distal region of the distolateral projection; the black arrow indicates that the carina of the proximal region of the distolateral projection is absent; (D) – Detailed ventral view of distolateral projection; white arrowheads indicate the row of teeth of the distal region of the distolateral projection; the black arrow indicates the carina of the proximal region of the distolateral projection is absent; (E) *Appendix masculina* in dorsal view; (F) *Appendix masculina* in dorsal view; white arrowheads indicate the spines; (G): *Appendix masculina* in ventral view; the black arrow indicates the row of spines of the posterior margin, the white arrow indicates the central convex region; (H) – *Appendix masculina* in ventral view; the black arrow indicates the row of spines of the posterior margin, the white arrow indicates the central convex region

two species because the specimens from Panama, analysed by Gusmão *et al.*⁹, belong to our group P2, while the specimens from P1 came from Costa Rica, which is close to Panama. Since the holotype of *X. riveti* could not be located (it is probably lost), its comparison with specimens of these two groups was not possible.

An overlap between the geographical distribution of *X. kroyeri* and *Xiphopenaeus dincao* nov. sp. (as *Xiphopenaeus* sp. 1 and *Xiphopenaeus* sp. 2) along the Brazilian coast has been reported in Natal, Rio Grande do Norte and Ubatuba, São Paulo⁹, and later in Cananéia, São Paulo and in Caravelas, Bahia¹⁰. Here we show that they also overlap in Maragogi and Baía Formosa. *Xiphopenaeus dincao* nov. sp. and *Xiphopenaeus baueri*

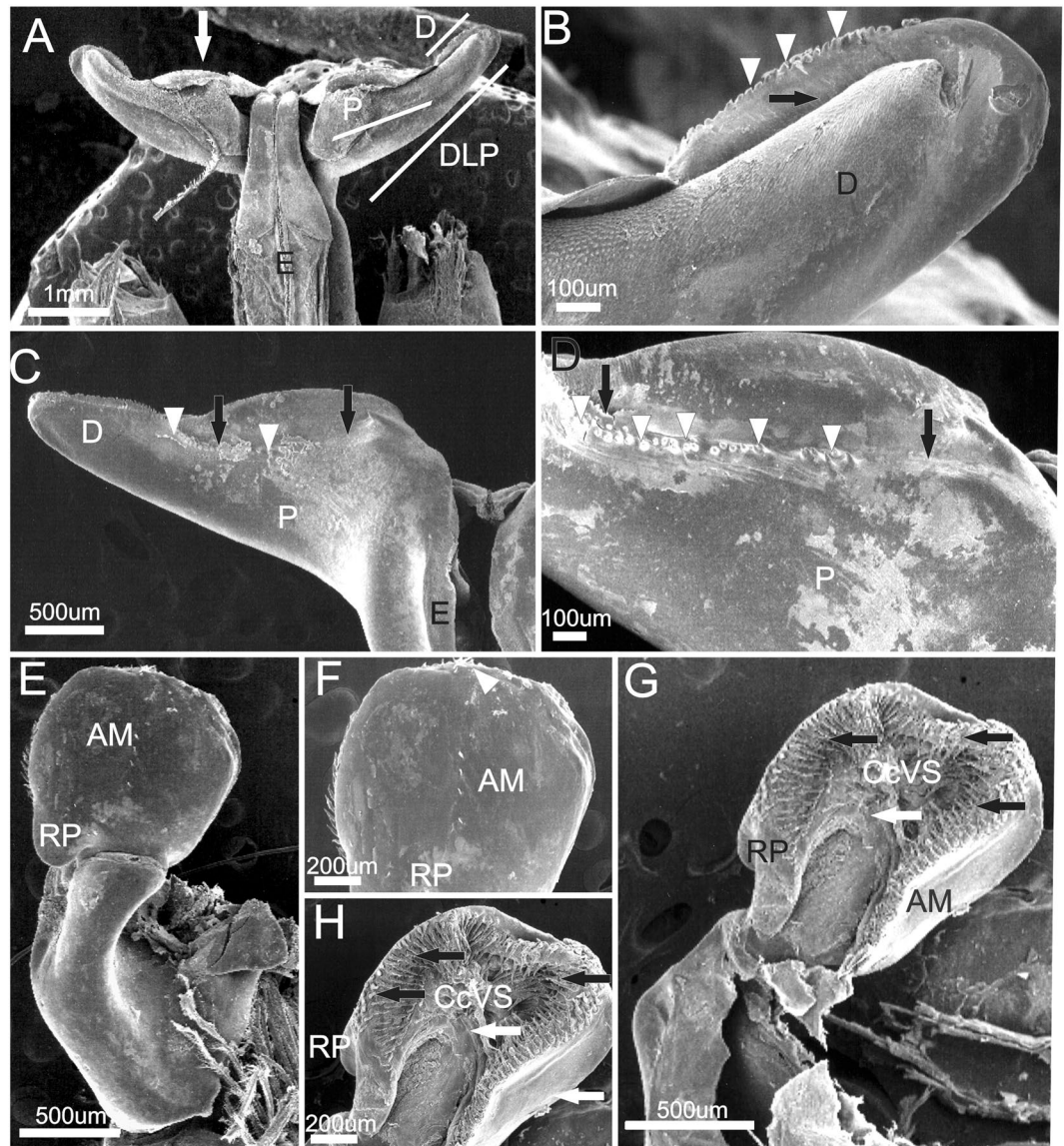


Figure 14. Scanning electron microscopy. Mexico: Tehuantepec, 4♂ (CCDB 5247). Male secondary sexual characters of *Xiphopenaeus riveti*. (A) petasma in dorsal view; the white arrow indicates the posterior margin of the distolateral projection; (B) distal region of the distolateral projection; white arrowheads indicate the teeth; black arrows indicate the petasma opening; (C) distolateral projection in ventral view; white arrowheads indicate the row of teeth of the distal region of the distolateral projection; the black arrow indicates the carina of the proximal region of the distolateral projection; (D) – detailed ventral view of distolateral projection; white arrowheads indicate the row of teeth of the distal region of the distolateral projection; the black arrow indicates the carina of the proximal region of the distolateral projection; (E) *Appendix masculina* in dorsal view; (F) *Appendix masculina* in dorsal view; (G) *Appendix masculina* in ventral view; the black arrow indicates the row of spines of the posterior margin, the white arrow indicates the central convex region; (H) – *Appendix masculina* in ventral view; the black arrow indicates the row of spines of the posterior margin, the white arrow indicates the central convex region.

nov. sp. occurs in sympatry in Vigia and Oiapoque (Fig. 15). Considering that *X. kroyeri* has been collected in Caracas (Venezuela)⁹ and in São Luís, Maranhão (Brazil)⁴⁶, the geographic distribution of these three species seem to overlap in the northern Atlantic coast of South America. In the present study, *Xiphopenaeus dincao* nov. sp. and *Xiphopenaeus baueri* nov. sp. were collected in the North of Brazil between Caracas and São Luís, Maranhão. Kerkhove *et al.*¹¹ found *X. kroyeri* and *Xiphopenaeus dincao* nov. sp. (as *Xiphopenaeus* sp. 2) in Colombia and Guianan Marine Ecoregion. Therefore, based on our data, and on Gusmão *et al.*^{9,46}, Piergiorgio *et al.*¹⁰ and Kerkhove *et al.*¹¹ the known geographical distribution of the species of the genus *Xiphopenaeus* is shown in Fig. 15.

It is likely that the successive openings and closures of the Panama Isthmus allowed the diversification of the genus *Xiphopenaeus* until its definitive closure circa 2.8 million years ago⁴⁷. The low genetic distances seen

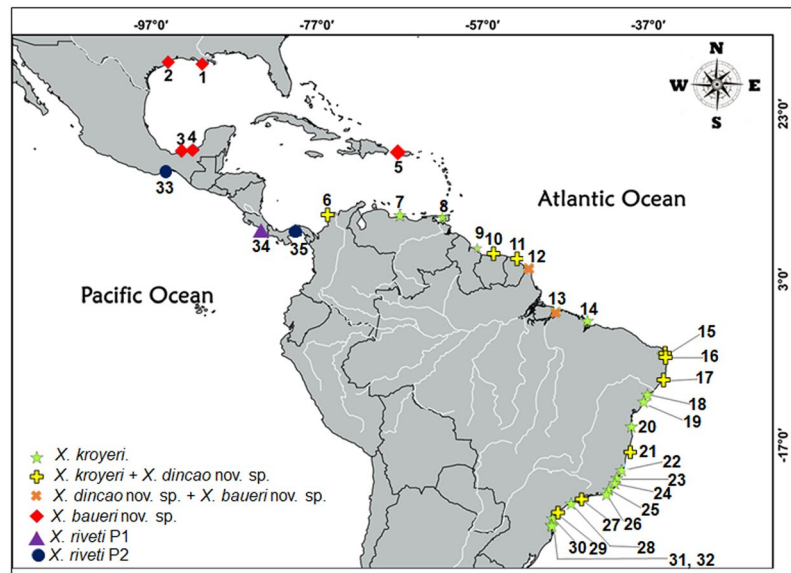


Figure 15. Geographical occurrence of the Atlantic *Xiphopenaeus* species. Locality numbers: 1- Isle Derniere (29°03'23.5"N; 90°48'58.6"W); 2- Galveston (29°11'49.3"N; 94°53'60.0"W); 3- Tabasco (18°31'40.25"N; 93°19'43.95); 4- Carmen (18°39'51.1"N; 91°51'17.7"W); 5- Mayaguez Bay (18°12'01.0"N; 67°09'37.0"W); 6- Colombia (); 7- Caracas (10°41'51.2"N; 66°56'41.2"W); 8- Trinidad and Tobago (10°24'28.8"N; 61°29'34.8"W); 9- Guyana (6°58'55.27"N; 57°54'31.07"W); 10- Suriname (5°56'35"N; 55°9'46"W); 11- French Guyana (4°54'44.698"N; 52°15'29.376"W); 12- Oiapoque (04°22'17.6"N; 51°24'26.4"W); 13- Vigia (00°51'45.00"S; 48°7'50.00"W); 14- São Luís (01° 59' 56.7816" S; 44° 19' 7.8528" W); 15- Natal (05°52'S; 35°10'W); 16- Baía Formosa (06°21'23.3"S; 35°00'24.7"W); 17- Maragogi (09°0'48.59"S; 35°13'14.46"W); 18- Aracaju (10°54'34" S; 37°04'29"W); 19- Poças (11°46'S; 37°32 W); 20- Ilhéus (14°46'S; 39°01'W); 21- Caravelas (17°44'S; 39°15'W); 22- Nova Almeida (20°03'S; 40°11'W); 23- Marataízes (20°59'S; 40°47'W) 24- Atafona (21°37'33.3"S; 41°00'47.2"W); 25- Macaé (22°23.44'S; 41°44.57"W); 26- Arraial do Cabo (22°58'S; 42°01'W); 27- Ubatuba (23°26'S; 45°04'W); 28- Santos (23°58'S; 46°19'W); 29- Cananéia (25°02'S; 47°55'W); 30- Guaratuba (25°52'44.3778" S; 48°31'35.7996" W); 31- Barra Velha (26°37'S; 48°40'); 32- Balneário Camboriú (26°59'07"S; 48°35'58"W); 33- Tehuantepec (16°08'56.6"N; 95°09'12.1"W); 34- Sierpe (8°58'26.2"N; 83°37'58.9"W); 35- Panama City (8°53'N; 79°35'W).

between *Xiphopenaeus dincao* nov. sp. and *Xiphopenaeus baueri* nov. sp. suggest that these species diverged more recently. *Xiphopenaeus baueri* nov. sp. was the only species found in the Gulf of Mexico and probably originated there. The Quaternary sea level changes created or strengthened the isolation between this region and the Caribbean, warranting the exchange of migrants^{48–51}. This isolation pattern has also been observed in other crustaceans such as the hermit crabs *Clibanarius vittatus* (Bosc, 1802) and *C. simetricus* (Randall, 1840), the first restricted to southeastern coast of the United States and Gulf of Mexico, and the second distributed along the Caribbean and South America⁵². Furthermore, in *Atya scabra* (Leach, 1816), individuals from the Gulf of Mexico are isolated from those from the Caribbean and Brazil, which share haplotypes among them although genetic divergences remain within the intraspecific level⁵³.

The external genitalia of Dendrobranchiata display important characters for the taxonomy of the group and is useful to separate morphologically highly similar congeneric species^{4,24,54}. Here, morphological differences supporting the separation of the groups identified in the molecular analyses were found in the male secondary sexual characters — petasma and *appendix masculina*. Previously, the petasma of *Xiphopenaeus* has been described without many details on the distolateral projections^{4,55,56}. Fransozo *et al.*⁵⁷, who studied the petasma development of *X. kroyeri* in Ubatuba, did not report morphological differences among the individuals. The photo provided by the authors corresponds to the shape described here to *Xiphopenaeus dincao* nov. sp. Burkenroad⁶ described a difference between individuals from Bahia (Brazil) and Louisiana (USA), concerning the “small tooth” of the distolateral projection, probably referring to the distal region of the distolateral projection. Considering the known geographical distribution of *Xiphopenaeus* (see Fig. 15), the species analysed by Burkenroad⁶ were probably *Xiphopenaeus kroyeri* stricto sensu and *Xiphopenaeus baueri* nov. sp.

We did not find any differences in the female external genitalia that could be used to separate the species of *Xiphopenaeus*. We expected that the same pattern revealed by the petasma would be seen in the thelycum, since the morphological differentiation of the reproductive structures contributes to the reproductive isolation and favours the formation of cryptic species²⁴. Therefore, it seems that the hypothesis that the male and female genitalia evolve in a “key and lock” model as a mechanism of reproductive isolation⁵⁸, does not apply to all Dendrobranchiata, as also reported in *Sicyonia* H. Milne Edwards, 1830⁵⁹. Future studies on the ultrastructure of the internal part of the thelycum, including a larger number of specimens, are needed to solve the taxonomic issue based on females.

Previous description of the *appendix masculina* of *Xiphopenaeus* have been little informative. Smith⁵⁶ described it as ovoid and flattened while Pérez-Farfante & Kensley⁴ described it as subcircular. Overall, the *appendix masculina* of *Xiphopenaeus* is similar to that of *Rimapenaeus fuscina*⁶⁰, and may reflect the phylogenetic closeness between these genera^{61,62}.

Microanatomic details may reveal crucial information to differentiate cryptic species⁶³, and indeed, the use of SEM to analyse the petasma and *appendix masculina* revealed unknown details and ornamentations. Nonetheless, the gross anatomy of the petasma also allowed the identification of a few characters that were important to differentiate the species, without the need of such equipment (SEM). Thus, this information could facilitate and pave the way for further studies on the population biology and ecology of these cryptic species. According to Dall *et al.*⁷ the morphology of these structures are unique in each species. Using the stereomicroscope, it is possible to see the interspecific differences in the spines of the ventral face of the *appendix masculina*, which can also be enhanced using dyes like methyl blue.

To conclude, we demonstrate that the genus *Xiphopenaeus* is composed of at least five species, by combining morphological and molecular tools. Four out of five species can be differentiated based on the morphology, and two of them are described herein (*Xiphopenaeus dincao* nov. sp. and *Xiphopenaeus baueri* nov. sp.). Further studies addressing the status of the species from the Pacific and investigating the existence of more cryptic species are strongly encouraged.

Methods

Molecular analysis. We obtained specimens of the genus *Xiphopenaeus* from 17 localities: 15 from the Atlantic Ocean and two from the Pacific (Supplementary table S1 and S2). Most specimens came from the Crustacean Collection of the Department of Biology, FFCLRP, University of São Paulo, Brazil (CCDB). Others were collected during the development of research projects by members of the Laboratory of Marine and Freshwater Shrimps (LABCAM) and Laboratory of Bioecology and Systematics of Crustaceans (LBSC). These specimens were stored in 80% ethanol and deposited in the collection mentioned above (CCDB) and Coleção de Crustáceos do Laboratório de Biologia de Camarões Marinhos e de Água Doce, Faculdade de Ciências, Universidade Estadual Paulista, Bauru, Brazil (CCLC). Additionally, we included specimens borrowed from the following scientific collections: Museu da Pontifícia Universidade Católica do Rio Grande do Sul (MCP); Instituto de Pesquisas Científicas e Tecnológicas do Estado do Amapá (IEPA), Colección Nacional de Crustáceos, Universidad Autónoma de México (CNCR). We also received donations of specimens and tissues from the following scientific institutions: Zoological Collection of the University of Louisiana, Lafayette, USA (ULLZ) and Museo de Zoología da Universidad de Costa Rica (MZ-UCR).

To extract DNA, muscle tissues were dissected from the abdomen and two common techniques were employed: the salting-out method⁶⁴ with some modifications proposed by Mantelatto *et al.*²⁶, and the Chelating Ion Exchange Resin (Chelex 100)⁶⁵. Two molecular markers from mitochondrial genes, cytochrome c oxidase subunit I (COI) barcoding region^{66–68} (N = 91) and 16S rDNA⁶⁷ (N = 15) were used. Additionally, the Palumbi region of COI²⁵ (N = 9) was used to allow the comparison of our specimens to those used by Gusmão *et al.*⁹ The amplification reactions contained bovine albumin 1% (Sigma), 10X Taq Buffer (Thermo Scientific), MgCl₂ (25 mM), betaine (5 M), dNTPs (1.25 mM each), primers (10 or 20 μM) (Supplementary table S3), *Thermus aquaticus* polymerase (5 U μl⁻¹) (Thermo Scientific), 1.0–5.5 μl of extracted DNA (50–100 ng ml⁻¹), and distilled and deionized water to complete 25 μl.

The thermal cycler settings used for the amplification for COI were: 4 min at 94 °C for initial denaturation; 35 cycles of 30 s at 94 °C, 30 s at 40–46 °C, 60 s at 72 °C; and final extension for 10 min at 72 °C. For the 16S they were: 4 min at 94 °C for initial denaturation; 40 cycles of 30 s at 48 °C; and final extension for 10 min at 72 °C. The results were checked in a 1.5% agarose gel stained with GelRed. Amplicons were purified with the SureClean Plus kit (Bioline USA Inc.) and sequenced using the BigDye Terminator Mix in an ABI 3730 XL DNA Analyzer (Applied Biosystems), following the manufacturer's instructions.

Forward and reverse sequences were aligned to obtain the consensus sequence using BioEdit v.7.0.5⁶⁹. Consensus sequences were aligned separately for each gene with the software MUSCLE (Multiple Sequence Comparison by Log-Expectation)⁷⁰ on the online platform EMBL-EBI (European Molecular Biology Laboratory — The European Bioinformatics Institute)⁷¹ with the default parameters. The presence of stop codons in the COI sequences, which could indicate the occurrence of pseudogenes, was ruled out using the online translation tool EMBOSS Sixpack available in the EMBL-EBI Portal^{72,73}.

Phylogenetic analyses. The substitution saturation of all sequences was previously tested with the saturation test of Xia *et al.*⁷⁴ using the software DAMBE. Highly variable regions were removed from the aligned sequences using Gblocks^{75,76} available online through the Castresana Lab, Animal Biodiversity and Evolution Program (<http://molevol.cmima.csic.es/castresana/index.html>).

The phylograms based on the Maximum Likelihood criterion were constructed in the program RAxML-HPC2 on X-SEDE⁷⁷ available in the Cyber Infrastructure for Phylogenetic Research (CIPRES) website⁷⁸. The default parameters of RAxML were used to perform the analysis for the GTR model. To measure the consistency of the topology we selected the option to automatically determine the number of bootstraps to be used in the RAxML⁷⁹. Consequently, 1000 bootstrap pseudo-replicates were run, and only the values > 50% were reported.

Genetic distances. Genetic distances were calculated with the Kimura 2-Parameter model⁸⁰ based on COI (barcoding region) and 16S rDNA sequences separately, using MEGA 6.06⁸¹. We also included five other sequences of Dendrobranchiata species in our alignments to serve as external groups to root the distance and phylogenetics analysis (Supplementary Table S4).

Morphological assessment. The adult specimens used in the molecular analyses, and those from the biological collections CCDB and CCLC available for morphological analyses were carefully examined under a stereomicroscope. We searched for details in the characters and for morphological differences between the genetic groups indicated by the molecular analysis.

For the scanning electron microscopy (SEM), the petasma and *appendix masculina* were dissected from 15 voucher specimens preserved in 80% alcohol. These structures were dehydrated in a graded ethanol series of, 80%, 90%, and then placed 3x in 100% ethanol for 30 min. Afterwards, they were dried in a critical point dryer with liquid CO₂ in an EMS 850 (Electron Microscopy Sciences) sputtering, properly placed on stubs with carbon adhesive tape and sputter-coated with gold (50 nm) in a Denton Vacuum Desk II sputtering. Micrographs were obtained in a Jeol JSM 5410 scanning electron microscope. Voucher specimens were deposited in CCDB (Catalog numbers — 5019, 5247) and in collection of Museu de Zoologia da Universidade de São Paulo (Catalog numbers — MZUSP 39350, MZUSP 39351). Ten samples containing two cryptic species were mixed and then checked using the morphological differences obtained from both stereomicroscopy and SEM. All samples were submitted again to the molecular protocol to validate the morphological characters.

Received: 30 May 2019; Accepted: 5 September 2019;

Published online: 25 October 2019

References

- Bickford, D. *et al.* Cryptic species as a window on diversity and conservation. *Trends Ecol. Evol.* **22**, 148–155 (2007).
- Pfenninger, M. & Schwenk, K. Cryptic species are homogeneously distributed among taxa and biogeographical regions. *BMC Evol. Biol.* **7**, 121, ISI:000248497600001 (2007).
- Trontelj, P. & Fiser, C. Cryptic species should not be trivialized. *Syst. Biodiv.* **7**, 1–23 (2009).
- Pérez-Farfante, I. & Kensley, B. Penaeoid and sergestoid shrimps and prawns of the world. Keys and diagnoses for the families and genera. *Bull. Mus. Nat. d'Hist. Natur.* **175**, 1–233 (1997).
- International Commission on Zoological Nomenclature - Opinion 864. Penaeid generic names (Crustacea, Decapoda): Addition of twenty-eight to the Official List. *Bull. Zool. Nomencl.* **25**(4/5), 138–147 (1969).
- Burkenroad, M. D. The Penaeidea of Louisiana with a discussion of their world relationships. *Bull. Amer. Mus. Nat. Hist.* **68**, 61–143 (1934).
- Dall, W., Hill, B. J., Rothlisberg, P. C. & Sharples, D. J. The biology of the Penaeidae. in *Advances in Marine Biology* (eds Blaxter, J. H. S. & Southward, A. J.) 1–489 (San Diego: Academic Press 1990).
- De Grave, S. & Fransen, C. H. J. M. Carideorum catalogus: the recent species of the dendrobranchiate, stenopodidean, procarididean and caridean shrimps. *Zool. Med.* **85**, 196–585 (2011).
- Gusmão, J., Lazoski, C., Monteiro, F. A. & Solé-Cava, A. M. Cryptic species and population structuring of the Atlantic and Pacific seabob shrimp species, *Xiphopenaeus kroyeri* and *Xiphopenaeus rivetii*. *Mar. Biol.* **149**, 491–502 (2006).
- Pierjorge, R. M., Pontes, M. N., Duarte, A. V. B. & Gusmão, J. Haplotype-specific singlelocus multiplex PCR assay for molecular identification of sea-bob shrimp, *Xiphopenaeus kroyeri* (Heller, 1862), cryptic species from the Southwest Atlantic using a DNA pooling strategy for simultaneous identification of multiple samples. *Bioch. Syst. Ecol.* **54**, 348–353 (2014).
- Kerkhove, T. R. H. *et al.* Multilocus data reveal cryptic species in the Atlantic seabob shrimp *Xiphopenaeus kroyeri* (Crustacea: Decapoda). *Biol. J. Linnean Soc.* **127**, 847–862 (2019).
- Instituto Brasileiro do Meio Ambiente e dos Recursos Naturais Renováveis (IBAMA). Estatística da Pesca 2007 (Brasil) – Grandes Regiões e Unidades da Federação Brasileira: Ministério do Meio Ambiente. Available at <https://www.ibama.gov.br/sophia/cnia/livros/estatisticadepescadigital.pdf>. (2007).
- Fransozo, A., Costa, R. C., Mantelatto, F. L., Pinheiro M. A. A. & Santos, S. Composition and abundance of shrimp species (Penaeidea and Caridea) in Fortaleza Bay, Ubatuba, São Paulo, Brazil in *Modern Approaches to the Study of Crustacea* (eds Briones, E.E. & Alvarez, F.) 117–125 (Kluwer Academic, 2002).
- Costa, R. C. *et al.* Carcinofauna acompanhante da pesca do camarão sete-barbas *Xiphopenaeus kroyeri* em Macaé, Rio de Janeiro, sudeste brasileiro. *Bolm. Inst. Pesca.* **42**, 611–624 (2016).
- Pantaleão, J. A. F., Carvalho-Batista, A., Fransozo, A. & Costa, R. C. The influence of upwelling on the diversity and distribution of marine shrimp (Penaeoidea and Caridea) in two tropical coastal areas of southeastern Brazil. *Hydrobiologia.* **763**, 381–395 (2016).
- D'Incao, F., Valentini, H. & Rodrigues, L. F. Avaliação da pesca de camarões nas regiões sudeste e sul do Brasil. 1965–1999. *Atlântica.* **24**, 103–116 (2002).
- Castro, R. H., Costa, R. C., Fransozo, A. & Mantelatto, F. L. Population structure of the seabob shrimp *Xiphopenaeus kroyeri* (Heller, 1862) (Crustacea: Penaeoidea) in the littoral of São Paulo, Brazil. *Sci. Mar.* **69**, 105–112 (2005).
- Instituto de Pesca de São Paulo. Programa de Monitoramento da Atividade Pesqueira Marinha e Estuarina do Instituto de Pesca (PMAP). Available at <http://www.propesq.pesca.sp.gov.br/relatorio/30>. Accessed on 30 July 2019.
- Ávila-da-Silva, A. O. *et al.* Produção pesqueira marinha e estuarina do estado de São Paulo dezembro 2018. *Informe Pesqueiro de São Paulo.* **104**, 1–4 (2019).
- Pérez-Farfante, I. Illustrated key to Penaeoid shrimps of commerce in the Americas. *NOAA Tech. Rep. NMFS.* **64**, 1–32 (1988).
- Bortolus, A. Error cascades in the biological sciences: the unwanted consequences of using bad taxonomy in ecology. *AMBIO: J. Human Environ.* **37**, 114–118 (2008).
- França, N. F. C. *et al.* *Farfantepenaeus subtilis* (Pérez-Farfante, 1967) and *F. brasiliensis* (Latreille, 1817) (Decapoda, Penaeidae): Ontogenetic comparison using the combined analysis of secondary sexual characters and molecular markers. *Fish. Res.* **216**, 89–95 (2019).
- Magalhães, T., Robles, R., Felder, D. L. & Mantelatto, F. L. Integrative taxonomic study of the purse crab genus *Persephona* Leach, 1817 (Brachyura: Leucosiidae): combining morphology and molecular data. *PLoS One.* **11**, e0152627 (2016).
- Tavares, C. & Gusmão, J. Description of a new Penaeidae (Decapoda: Dendrobranchiata) species, *Farfantepenaeus isabellae* sp. nov. *Zootaxa.* **4171**(3), 505–516 (2016).
- Palumbi, S. R. & Benzie, J. Large mitochondrial DNA differences between morphologically similar penaeid shrimp. *Mol. Mar. Biol. Biotechnol.* **1**(1), 27–34 (1991).
- Mantelatto, F. L., Robles, R. & Felder, D. L. Molecular phylogeny of the western Atlantic species of the genus *Portunus* (Crustacea: Brachyura, Portunidae). *Zool. J. Linn. Soc.* **150**(1), 211–220 (2007).
- Mantelatto, F. L. *et al.* DNA sequence database as a tool to identify decapod crustaceans on the São Paulo coastline. *Mitoch. DNA Part A.* **29**(5), 805–815 (2018).
- Bracken-Grissom, H. D., Felder, D. L., Vollmer, N. L., Martin, J. W. & Crandall, K. A. Phylogenetics links monster larva to deep-sea shrimp. *Ecol. Evol.* **2**(10), 2367–2373 (2012).

29. Negri, M., Pileggi, L. G. & Mantelatto, F. L. Molecular barcode and morphological analyses reveal the taxonomic and biogeographical status of the stripedlegged hermit crab species *Clibanarius scolopetarius* (Herbst, 1796) and *Clibanarius vittatus* (Bosc, 1802) (Decapoda: Diogenidae). *Invertebr. Syst.* **26**(5/6), 561–571 (2012).
30. Pileggi, L. G. & Mantelatto, F. L. Taxonomic revision of doubtful Brazilian freshwater shrimp species of genus *Macrobrachium* (Decapoda, Palaemonidae). *Iheringia, Sér. Zool.* **102**(4), 426–437 (2012).
31. Costa, F. O. *et al.* Biological identifications through DNA barcodes: the case of the Crustacea. *Can. J. Fish. Aquat. Sci.* **64**(2), 272–295 (2007).
32. Martzen da Silva, J. *et al.* Systematic and evolutionary insights derived from mtDNA COI barcode diversity in the Decapoda. *Plos One.* **6**(5), e19449 (2011).
33. Cheng, J., Sha, Z. & Liu, R. DNA barcoding of genus *Metapenaeopsis* (Decapoda: Penaeidae) and molecular phylogeny inferred from mitochondrial and nuclear sequences. *Bioch. Syst. Ecol.* **61**, 376–384 (2015).
34. Timm, L. *et al.* Tree money grows on: the first inclusive molecular phylogeny of the economically important pink shrimp (Decapoda: *Farfantepenaeus*) reveals cryptic diversity. *Invertebr. Syst.* **33**, 488–500 (2019).
35. Carvalho-Batista, A. *et al.* Inferring population connectivity across the range of distribution of the stiletto shrimp *Artemesia longinaris* Spence Bate, 1888 (Decapoda, Penaeidae) from DNA barcoding: implications for fishery management. *Zookeys.* **457**, 271–288 (2014).
36. Carvalho-Batista, A. *et al.* Genetic comparison of the red shrimp *Pleoticus muelleri* (Decapoda: Solenoceridae) using the barcode gene reveals the absence of cryptic speciation along its distribution. *Reg. Stud. Mar. Sci.* **24**, 392–399.
37. Teodoro, S. A., Terossi, M., Costa, R. C. & Mantelatto, F. L. Genetic homogeneity in the commercial pink shrimp *Farfantepenaeus paulensis* revealed by COI barcoding gene. *Estuar. Coast. Shelf Sci.* **166**, 124–130 (2015).
38. Teodoro, S. A., Terossi, M., Mantelatto, F. L. & Costa, R. C. Discordance in the Identification of Juvenile Pink Shrimp (*Farfantepenaeus brasiliensis* and *F. paulensis*): an integrative approach using morphology, morphometry and barcoding. *Fish. Res.* **183**, 244–253 (2016).
39. Hebert, P. D. N., Penton, E. H., Burns, J. M., Janzen, D. H. & Hallwachs, W. Ten species in one: DNA barcoding reveals cryptic species in the neotropical skipper butterfly *Astraptes fulgerator*. *PNAS.* **101**(41), 14812–14817 (2004).
40. Hebert, P. D. N., Stoeckle, M. Y., Zemlak, T. S. & Francis, C. M. Identification of birds through DNA barcodes. *PLoS Biol.* **2**(10), e312 (2004).
41. Waugh, J. DNA barcoding in animal species: progress, potential and pitfalls. *BioEssays.* **29**(2), 188–197 (2007).
42. Frézal, L. E. & Leblois, R. Four years of DNA barcoding: current advances and prospects. *Infect. Gen. Evol.* **8**, 727–736 (2008).
43. Ward, R. D. DNA barcode divergence among species and genera of birds and fishes. *Mol. Ecol. Res.* **9**, 1077–1085 (2009).
44. Quan, J., Zhuang, Z., Deng, J., Dai, J. & Zhang, Y. Phylogenetic relationships of 12 Penaeoidea shrimp species deduced from mitochondrial DNA sequences. *Bioch. Gen.* **42**(9–10), 331–345 (2004).
45. Francisco, A. K. & Galetti Junior, P. M. Genetic distance between broodstocks of the marine shrimp *Litopenaeus vannamei* (Decapoda, Penaeidae) by mtDNA analyses. *Gen. Mol. Biol.* **28**(2), 258–261 (2005).
46. Gusmão, J., Pierjorge, R. M. & Tavares, C. The contribution of genetics in the study of the sea-bob shrimp populations from the Brazilian coast. *Bolm. Inst. Pesca.* **39**(3), 323–338 (2013).
47. O’Dea, A. *et al.* Formation of the Isthmus of Panama. *Sci. Adv.* **2**, e1600883 (2016).
48. Avise, J. C. Phylogeography: retrospect and prospect. *J. Biogeogr.* **36**(1), 3–15 (2009).
49. Hewitt, G. The genetic legacy of the Quaternary ice ages. *Nature.* **405**, 907–913 (2000).
50. Hewitt, G. M. Genetic consequences of climatic oscillations in the Quaternary. *Phil. Trans. R. Soc. Lond., B. Biol. Sci.* **359**, 183–195 (2004).
51. Ludt, W. B. & Rocha, L. A. Shifting seas: the impacts of Pleistocene sea-level fluctuations on the evolution of tropical marine taxa. *J. Biogeogr.* **42**, 25–38 (2015).
52. Negri, M., Lamaitre, R. & Mantelatto, F. L. Molecular and morphological resurrection of *Clibanarius symmetricus* (Randall, 1840), a cryptic species hiding under the name for the thinstripe hermit crab *C. vittatus* (Bosc, 1802) (Decapoda: Anomura: Diogenidae). *J. Crustacean Biol.* **34**, 848–861 (2014).
53. Oliveira, C. M. C. A., Terossi, M. & Mantelatto, F. L. Phylogeographic structuring of the amphidromous shrimp *Atya scabra* (Crustacea, Decapoda, Atyidae) unveiled by range-wide mitochondrial DNA sampling. *Mar. Freshwater Res.* **70**(8), 1078–1093 (2019).
54. Pérez-Farfante, I. A new species and two new subspecies of shrimp of the genus *Penaeus* from the Western Atlantic. *Proc. Biol. Soc. Wash.* **80**, 83–100 (1967).
55. Heller, C. Beiträge zur näheren Kenntniss der Macrouren. *Sitzungsber. Kaiserl. Akad. Wiss.* **45**, 389–426 (1862).
56. Smith, S. I. Notice of the Crustacea collected by Prof. C.F. Hart on the coast of Brazil in 1867. *Trans. Connect. Acad. Arts Sci.* **2**, 1–41 (1869).
57. Fransozo, V., Santos, D. C., López-Greco, L. S. & Bolla, E. A. Jr. Development of secondary sexual characters in the seabob shrimp *Xiphopenaeus kroyeri* (Heller 1862) (Crustacea, Decapoda, Penaeidae): a scanning electron microscope study. *Invertebr. Reprod. Dev.* **55**(1), 6–15 (2011).
58. Eberhard, W. G. *Sexual Selection and Animal Genitalia*. 244pp. (Harvard University Press, 1985).
59. Bauer, R. T. Role of the petasma and appendices masculinae during copulation and insemination in the penaeoid shrimp, *Sicyonia dorsalis* (Crustacea: Decapoda: Dendrobranchiata). *Invertebr. Reprod. Dev.* **29**(3), 173–184 (1996).
60. Pérez-Farfante, I. A key to the American Pacific shrimps of the genus *Trachypenaeus* (Decapoda, Penaeidae), with the description of a new species. *Fish. Bull.* **69**(3), 635–646 (1971).
61. Tavares, C., Serejo, C. & Martin, J. W. A preliminary phylogenetic analysis of the Dendrobranchiata based on morphological characters in *Crustacean Issues 18: Decapod Crustacean Phylogenetics* (eds. Martin, J. W., Crandall, K. A. & Felder, D. F.) 261–279 (CRC Press, 2009).
62. Camargo, T. R. *et al.* Sperm ultrastructure of shrimp from family Penaeidae (Crustacea: Dendrobranchiata) in a phylogenetic context. *Arthropod Struct. Dev.* **46**, 588–600 (2017).
63. Jörgen, K. M. & Schrödl, M. How to describe a cryptic species? Practical challenges of molecular taxonomy. *Front. Zool.* **10**, 59 (2013).
64. Miller, S. A., Dykes, D. D. & Polesky, H. F. A simple salting out procedure for extracting DNA from human nucleated cells. *Nucleic Acids Res.* **16**, 1215 (1988).
65. Estoup, A., Lagiarder, C. R., Perrot, E. & Chourrout, D. Rapid one-tube DNA extraction for reliable PCR detection of fish polymorphic markers and transgenes. *Mol. Mar. Biol. Biotech.* **5**, 295–298 (1996).
66. Folmer, O., Black, M., Hoeh, W., Lutz, R. & Vrijenhoek, R. DNA primers for amplification of mitochondrial Cytochrome C Oxidase subunit I from diverse metazoan invertebrates. *Mol. Mar. Biol. Technol.* **3**(5), 294–299 (1994).
67. Schubart, C. D. & Huber, M. G. J. Genetic comparisons of german populations of the stone crayfish, *Austropotamobius torrentium* (Crustacea: Astacidae). *Bull. Fr. Peche Piscic.* **380**, 1019–1028 (2006).
68. Mantelatto, F. L. *et al.* New primers for amplification of cytochrome c oxidase subunit I barcode region designed for species of Decapoda (Crustacea). *Nauplius.* **24**, e2016030 (2016).
69. Hall, T. A. BioEdit: a user-friendly biological sequence alignment editor and analysis program for Windows 95/98/NT. *Nucleic Acids Symp. Ser.* **41**, 95–98 (1999).

70. Edgar, R. C. MUSCLE: multiple sequence alignment with high accuracy and high throughput. *Nucleic Acids Res.* **32**, 1792–1797 (2004).
71. McWilliam, H. *et al.* Analysis tool web services from the EMBL-EBI. *Nucleic Acids Res.* **41**, 597–600 (2013).
72. Rice, P., Longden, I. & Bleasby, A. EMBOSS: the European molecular biology open software suite. *Trends Genet.* **16**, 276–277 (2000).
73. Li, W. *et al.* The EMBL-EBI bioinformatics web and programmatic tools framework. *Nucleic Acids Res.* **43**, 580 (2015).
74. Xia, X., Xie, Z., Salemi, M., Chen, L. & Wang, Y. An index of substitution saturation and its application. *Mol. Phylogenet. Evol.* **26**(1), 1–7 (2003).
75. Castresana, J. Selection of conserved blocks from multiple alignments for their use in phylogenetic analysis. *Mol. Biol. Evol.* **17**(4), 540–552 (2000).
76. Talavera, G. & Castresana, J. Improvement of phylogenies after removing divergent and ambiguously aligned blocks from protein sequence alignments. *Syst. Biol.* **56**, 564–577 (2007).
77. Stamatakis, A. RAxML-VI-HPC: maximum likelihood-based phylogenetic analyses with thousands of taxa and mixed models. *Bioinformatics.* **22**(21), 2688–2690 (2006).
78. Miller, M. A., Pfeiffer, W. & Schwartz, T. “Creating the CIPRES Science Gateway for inference of large phylogenetic trees” in *Proceedings of the Gateway Computing Environments Workshop (GCE)* 1–8 (New Orleans, LA, 2010).
79. Stamatakis, A., Hoover, P. & Rougemont, J. A rapid bootstrap algorithm for the RAxML web servers. *Syst. Biol.* **57**(1), 758–771 (2008).
80. Kimura, M. A simple method for estimating evolutionary rates of base substitutions through comparative studies of nucleotide sequences. *J. Mol. Evol.* **16**(2), 111–120 (1980).
81. Tamura, K., Stecher, G., Peterson, D., Filipiński, A. & Kumar, S. MEGA6: Molecular Evolutionary Genetics Analysis version 6.0. *Mol. Biol. Evol.* **30**(12), 2725–2729 (2013).

Acknowledgements

The present study is part of the PhD thesis of ACB supported by a scholarship from the Conselho Nacional de Desenvolvimento Científico e Tecnológico – CNPq. The major support came from the multidisciplinary research project by the São Paulo Research Foundation – FAPESP, Brazil (Temático Biota 2010/50188–8, Coleções Científicas 2009/54931–0, PROTAX 2016/50376–5) and the Coordenação de Aperfeiçoamento de Nível Superior, Brazil – CAPES - Código de Financiamento 001 (Ciências do Mar II #2007/2014–23038.004310/2014–85, #2005/2014–23038.004308/2014–14 and #1989/2014–23038.004309/2014–51) granted to RCC, FLM and FJZ and CNPq (302748/2010–5, 471011/2011–8, 490314/2011–2, PROTAX 440417/2015–5, 406006/2012–1) to FLM. FJZ, FLM and RCC would like to thank CNPq for ongoing Research Scholarship (PQ 305919/2014–8, PQ 304968/2014–5, and 303314/2017–6, respectively). MT is grateful to FAPESP (PD 2011/11901–3). The authors would like to thank Dra. Claudia Fiorillo and to the FCAV Electron Microscopy and Invertebrate Morphology laboratories (UNESP – Jaboticabal) for technical support, and Isabel Soares for the map with the distribution of *Xiphopenaeus* species. Finally, the authors are grateful to many colleagues and friends (Darryl Felder, Fernando Alvarez, Ingo Wehrtmann, Jose L. Villalobos, Marcos Tavares, Peter Dworschak, Raymond Bauer, Wanderley Costa) for donating specimens, lending material from collections, allowing and helping with collection visits and fieldwork, for transporting some loans from and to the collections, and nomenclatural discussion.

Author contributions

A.C.B., R.C.C., and F.L.M. idealized and executed the project; R.C.C., F.L.M. and F.J.Z. provided all institution and laboratory facilities and coordinated the main grants that supported the project; A.C.B., M.T. and F.L.M. visited collections; A.C.B., M.T., F.J.Z. carried out the laboratory work and performed the analyses. All authors read, corrected, and approved the final version of the text.

Competing interests

The authors declare no competing interests.

Additional information

Supplementary information is available for this paper at <https://doi.org/10.1038/s41598-019-51484-3>.

Correspondence and requests for materials should be addressed to R.C.C.

Reprints and permissions information is available at www.nature.com/reprints.

Publisher’s note Springer Nature remains neutral with regard to jurisdictional claims in published maps and institutional affiliations.



Open Access This article is licensed under a Creative Commons Attribution 4.0 International License, which permits use, sharing, adaptation, distribution and reproduction in any medium or format, as long as you give appropriate credit to the original author(s) and the source, provide a link to the Creative Commons license, and indicate if changes were made. The images or other third party material in this article are included in the article’s Creative Commons license, unless indicated otherwise in a credit line to the material. If material is not included in the article’s Creative Commons license and your intended use is not permitted by statutory regulation or exceeds the permitted use, you will need to obtain permission directly from the copyright holder. To view a copy of this license, visit <http://creativecommons.org/licenses/by/4.0/>.

© The Author(s) 2019