


Is diffuse intracluster light a good tracer of the galaxy cluster matter distribution?

H. Sampaio-Santos,^{1,2} Y. Zhang,³ R. L. C. Ogando^{1,2,3}  ^{1,2}★ T. Shin,⁴ Jesse B. Golden-Marx,^{5,6} B. Yanny,³ K. Herner,³ M. Hilton,⁷ A. Choi,⁸ M. Gatti,⁹ D. Gruen,^{10,11,12} B. Hoyle,^{13,14} M. M. Rau,¹⁵ J. De Vicente,¹⁶ J. Zuntz,¹⁷ T. M. C. Abbott,¹⁸ M. Aguena,^{2,19} S. Allam,³ J. Annis,³ S. Avila,²⁰ E. Bertin,^{21,22} D. Brooks,²³ D. L. Burke,^{11,12} M. Carrasco Kind,^{24,25} J. Carretero,⁹ C. Chang,^{26,27} M. Costanzi,^{28,29} L. N. da Costa,^{1,2} H. T. Diehl,³ P. Doel,²³ S. Everett,³⁰ A. E. Evrard,^{6,31} B. Flaugher,³ P. Fosalba,^{32,33} J. Frieman,^{3,27} J. García-Bellido,²⁰ E. Gaztanaga,^{32,33} D. W. Gerdes,^{6,31} R. A. Gruendl,^{24,25} J. Gschwend,^{1,2} G. Gutierrez,³ S. R. Hinton,³⁴ D. L. Hollowood,³⁰ K. Honscheid,^{8,35} D. J. James,³⁶ M. Jarvis,⁴ T. Jeltema,³⁰ K. Kuehn,^{37,38} N. Kuropatkin,³ O. Lahav,²³ M. A. G. Maia,^{1,2} M. March,⁴ J. L. Marshall,³⁹ R. Miquel,^{9,40} A. Palmese,^{3,27} F. Paz-Chinchón,^{25,41} A. A. Plazas,⁴² E. Sanchez,¹⁶ B. Santiago,^{2,43} V. Scarpine,³ M. Schubnell,³¹ M. Smith,⁴⁴ E. Suchyta,⁴⁵ G. Tarle,³¹ D. L. Tucker,³ T. N. Varga,^{13,14} and R. H. Wechsler^{10,11,12} (DES Collaboration)

Affiliations are listed at the end of the paper

Accepted 2020 November 19. Received 2020 November 18; in original form 2020 May 23

ABSTRACT

We explore the relation between diffuse intracluster light (central galaxy included) and the galaxy cluster (baryonic and dark) matter distribution using a sample of 528 clusters at $0.2 \leq z \leq 0.35$ found in the Dark Energy Survey (DES) Year 1 data. The surface brightness of the diffuse light shows an increasing dependence on cluster total mass at larger radius, and appears to be self-similar with a universal radial dependence after scaling by cluster radius. We also compare the diffuse light radial profiles to the cluster (baryonic and dark) matter distribution measured through weak lensing and find them to be comparable. The IllustrisTNG galaxy formation simulation, TNG300, offers further insight into the connection between diffuse stellar mass and cluster matter distributions – the simulation radial profile of the diffuse stellar component does not have a similar slope with the total cluster matter content, although that of the cluster satellite galaxies does. Regardless of the radial trends, the amount of diffuse stellar mass has a low-scatter scaling relation with cluster’s total mass in the simulation, out-performing the total stellar mass of cluster satellite galaxies. We conclude that there is no consistent evidence yet on whether or not diffuse light is a faithful radial tracer of the cluster matter distribution. Nevertheless, both observational and simulation results reveal that diffuse light is an excellent indicator of the cluster’s total mass.

Key words: galaxies: clusters: general – galaxies: photometry – dark matter.

1 INTRODUCTION

Galaxy clusters are permeated by a diffuse component known as the intracluster light (ICL), composed of stars that do not appear to be bound to any of the galaxies in a cluster. The existence of ICL was first reported by Zwicky (1951) almost 70 yr ago, but, limited by its very low surface brightness (measured as ~ 30 mag arcsec⁻² in *r*-band; Zhang et al. 2019b), only in the 1990’s ICL started to receive wide attention due to technological advancements such as the CCD camera (Uson, Boughn & Kuhn 1991; Bernstein et al. 1995; Gonzalez et al. 2000; Feldmeier et al. 2003).

Given its low surface brightness level, diffuse ICL is difficult to observe, nevertheless, it is an important component of galaxy clusters. Observations, semi-analytical modelling, and simulation

studies report that the ICL and cluster central galaxies may make up 10–50 per cent of the total cluster stellar light (e.g. Feldmeier et al. 2004; Zibetti et al. 2005; Gonzalez, Zaritsky & Zabludoff 2007; Behroozi, Wechsler & Conroy 2013; Pillepich et al. 2014; Zhang et al. 2019b). An interesting new perspective on ICL is its connection to the cluster dark matter distribution. Montes & Trujillo (2019) observed a striking similarity between the shape of cluster dark matter distribution and diffuse ICL, even more than between dark matter and intracluster gas. A possible explanation is that both dark matter and diffuse ICL contain collision-less particles, while the intracluster gas has self-interaction and dissipation. Thus, diffuse ICL is potentially a better tracer of the cluster dark matter distribution and an alternative mass proxy for wide and deep surveys such as LSST (Ivezić et al. 2019).

Another evidence of the connection between dark matter and ICL was shown by Montes & Trujillo (2018), there, the 3D slope of diffuse light measured in six clusters in the Hubble Frontier Fields

* E-mail: ogando@on.br

follows the expected 3D slope of a dark matter halo in IllustrisTNG. Other works also find a correlation between cluster mass (including dark matter) and the total diffuse light luminosity or stellar mass, especially at large radius (e.g. Zibetti et al. 2005; Huang et al. 2018a,b; DeMaio et al. 2020; Kluge et al. 2020). Furthermore, Zhang et al. (2019b, hereafter Z19) discovered that the ratio between diffuse light surface brightness and a weak-lensing measurement-based cluster mass–density model appears to be flat at cluster radius greater than 100 kpc, and that diffuse ICL radial profiles are self-similar.

Recently, several groups started to analyse this elusive component in N -body simulations. Alonso Asensio et al. (2020) investigated 30 simulated galaxy clusters within a narrow range of mass ($10^{14} < M_{200}/M_{\odot} < 10^{15.4}$) in the Cluster-EAGLE suite and found that their stellar mass and total matter have similar distributions, even more than in Montes & Trujillo (2019). Probing a larger range of halo masses in the Horizon-AGN simulation, Cañas et al. (2019) found that the diffuse light stellar mass fraction increases with halo mass, while its scatter decreases with mass.

In this paper, we explore the connection between diffuse ICL and cluster dark matter distribution using data from the Dark Energy Survey (DES; Dark Energy Survey Collaboration 2016), a wide-field optical imaging survey in g, r, i, z, Y using the 4-m Blanco telescope and the Dark Energy Camera (DECam; Flaugher et al. 2015). The analysis of diffuse light in galaxy clusters greatly benefits from extremely wide-field surveys like SDSS (e.g. Zibetti et al. 2005, hereafter Z05) and DES (e.g. Z19) because of their statistical power. Z19 successfully detected the diffuse intracluster light using DES data out to a cluster radius range of 1–2 Mpc at redshift ~ 0.25 by averaging ~ 300 clusters. We use the Z19 methods and update their analysis with a larger sample (528 galaxy clusters) to examine the relation between diffuse light and galaxy cluster mass. Given the difficulties in separating ICL and the cluster central galaxy, we follow the convention in Pillepich et al. (2018) to analyse ICL and cluster central galaxy together as ‘diffuse light’, while ‘intracluster light’ or ICL is reserved to qualitatively describe the unbound light beyond a few tens of kiloparsecs around the galaxy cluster centre. Table 1 summarizes the definitions used in this paper.

This paper is organized as follows: in Section 2 we describe the DES data (e.g. images, source catalogues, and galaxy cluster catalogues) and our analysis methods. In Section 3 we explore how diffuse light profiles behave as a function of galaxy cluster mass. We also investigate if the profiles are self-similar, and its ratio to cluster total light. In Section 4 and 5, we explore the main question of this paper – whether or not diffuse light can be used as a tracer of the cluster matter distribution, first, by comparing the diffuse light radial distribution to that of cluster total matter measured with weak lensing in Section 4. Then, we analyse the diffuse light properties in the IllustrisTNG hydrodynamic simulations (Pillepich et al. 2018) in Section 5 and compare to our measurements. Finally, we discuss and summarize the results in Section 6. In agreement with Z19, cosmological distances are calculated with a flat Λ CDM model with $h = 0.7$ and $\Omega_m = 0.3$.

2 DATA AND METHODS

Our analysis is based on the observations collected and processed by the DES.¹ In this paper, we closely follow Z19 in terms of the adopted data products and diffuse light measurement methods. This section provides a brief review, and notes any differences from Z19.

¹<https://www.darkenergysurvey.org>

Table 1. Nomenclature used in this paper.

Name	Definition
Cluster Central Galaxy, Central Galaxy, CG	The cluster central galaxy identified by the REDMAPPER algorithm. Qualitatively, these names refer to the light/stellar mass contained within the inner ~ 30 kpc of the galaxy centre.
Cluster Satellite Galaxies	The light or stellar mass contained in the non-central cluster galaxies, each defined within a Kron aperture observationally, or within twice the stellar half-mass radius in the simulation.
Intracluster Light, Diffuse Intracluster Light, ICL	The diffuse light beyond the outskirts of the central cluster galaxy, but not associated with any cluster satellite galaxy. Qualitatively, these names refer to the light/stellar mass not already contained in the cluster central galaxy or the cluster satellite galaxies.
Diffuse Light, Diffuse Stellar Mass	The light or stellar mass combination of intracluster light and the cluster central galaxy.
Cluster Total Light, Total Cluster Light, Cluster Total Stellar Mass, Total Cluster Stellar Mass	Total light or stellar mass contained in the galaxy cluster within a cluster radial range specified in the context. This is the combination of diffuse light and cluster satellite galaxies.

2.1 The REDMAPPER cluster sample

As in Z19, we use the galaxy cluster sample identified by the red-sequence **M**atched-filter **P**robabilistic **P**ercolation (REDMAPPER) algorithm (Rykoff et al. 2014) in DES Year 1 data. Each identified cluster is assigned a richness value, denoted as λ , which has been shown to be an excellent low scatter indicator of cluster mass (e.g. Rozo & Rykoff 2014; Farahi et al. 2019). To minimize the need for applying redshift-related corrections, we only make use of the clusters in a narrow redshift range (e.g. $0.2 \leq z \leq 0.35$). The upper redshift limit is higher than Z19 to match the weak lensing studies performed on the same cluster sample in McClintock et al. (2019). We further split our sample into four richness bins: $20 \leq \lambda < 30$, $30 \leq \lambda < 45$, $45 \leq \lambda < 60$, and $60 \leq \lambda < 150$, again following the choice in McClintock et al. (2019). Our selection ends with 538 clusters in total, 305, 149, 52, and 32 clusters in each of the respective richness bins. We use the mass– λ relation from McClintock et al. (2019) to estimate cluster mass M_{200m} , defined as the mass inside a spherical radius within which the cluster has a 200 times overdensity with respect to the Universe mean matter density at the cluster’s redshift. The lowest richness value from our cluster sample corresponds to a M_{200m} value of $1.2 \times 10^{14} M_{\odot}$, while the highest richness value corresponds to a M_{200m} value of $1.8 \times 10^{15} M_{\odot}$. We further follow up the cluster images and note 10 bad images in our cluster sample (for instance, with unmasked objects and very bright regions caused by nearby stars). We remove them from our analysis, reducing the cluster sample size to 528 in total, 297, 148, 52, and 31 clusters at $20 \leq \lambda < 30$, $30 \leq \lambda < 45$, $45 \leq \lambda < 60$, and $60 \leq \lambda < 150$, respectively. Fig. 1 shows the redshift, richness, and mass distribution of those clusters.

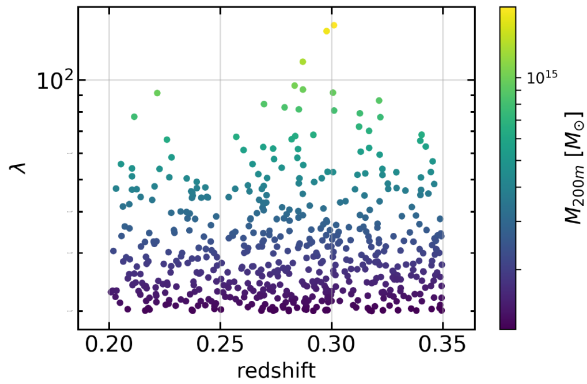


Figure 1. Richness as a function of redshift for 528 galaxy clusters. The colour represents the mean mass computed for the REDMAPPER clusters. We use the mass–richness relation and the best-fitting parameters reported in McClintock et al. (2019) to obtain the cluster masses from their richnesses.

2.2 Light profile measurement

We make diffuse light measurements around the REDMAPPER-selected central galaxies. The diffuse light in this analysis is derived from single-epoch images from the DES Year 3 processing campaign by the DES Data Management (DES DM) team (Abbott et al. 2018). For a given cluster image, all single-epoch images in the DES r -band which overlap with the central cluster galaxy (within 9 arcmin) are averaged to reduce variations in the sky background. The typical total exposure time for each cluster is 450 s, consisting of five 90 s single-epoch images from the first three years of DES observing. Because bright stars or nearby galaxies can affect diffuse light measurements, we remove clusters that are anywhere nearer than 526 arcsec (equivalent to 2000 pixels at DECam pixel scale) from these objects (using bad region mask > 2 described in Drlica-Wagner et al. 2018). The single-epoch images of each cluster are then coadded together using the SWARP software (Bertin 2010) to create one image for each cluster. The single-epoch images have been subtracted of sky background which are evaluated over the

whole DECam field of view using a Principal Component Analysis (PCA) method (Bernstein et al. 2017) for each exposure image, and the SWARP sky subtraction function is turned off during the coadding process.

To isolate diffuse light from galaxies and foreground or background objects in the cluster field, we use the DES coadded object catalogue to mask detected astronomical objects, but exclude the REDMAPPER selected cluster central galaxies. The masks are constructed as ellipses with inclination, major and minor axes provided by the DES DM coadd catalogue described in Abbott et al. (2018). Fig. 2 shows examples of three REDMAPPER clusters ($z \sim 0.27$) analysed in this paper before (top panel) and after masking (bottom panel). Unlike Z19, in which object brightness and detection significance cuts are applied before masking and then the faint galaxy contribution is estimated using the galaxy luminosity function constraints, we mask all objects to the DES Y3 catalogue limit with detection $S/N > 1.5$ ($\text{mag}_{\text{err_auto_i}} < 0.72$). To avoid the presence of spurious objects we also apply a cut of $\text{mag}_{\text{auto_i}} < 30.0$, which is beyond the limiting magnitude of the Y3 catalogue in r -band (24.08 mag for point-like sources at $S/N = 10$ within a 1.95 arcsec diameter aperture as in Abbott et al. 2018). The improved Y3 catalogue depth and our generous masking limit should eliminate any real objects detected in the images and we do not apply a faint galaxy contribution, as Z19 demonstrated this component to be insignificant at redshift ~ 0.25 in DES data.

For each masking object, the masking aperture is set to be 3.5 Kron radius of the object, 1.4 times as large in radius and 1.96 times as large in area as Z19. We hence avoid applying an unmasked residue light correction in the process – the enlarged masking aperture would reduce the cluster galaxy residue contribution by ~ 50 per cent compared to Z19. Calculation assuming Sérsic models states that a 3.5 Kron radius masking aperture only misses 0.8 per cent of the total light for a galaxy with Sérsic index $n = 1$ (comparing to 4.2 per cent with a 2.5 Kron radius masking aperture). For $n = 4$ and $n = 8$, masking with 3.5 (2.5) Kron radius misses 5.6 per cent (9.5 per cent) and 1.8 per cent (3.7 per cent) of the total light, respectively. These fractions have been reduced by about 50 per cent,

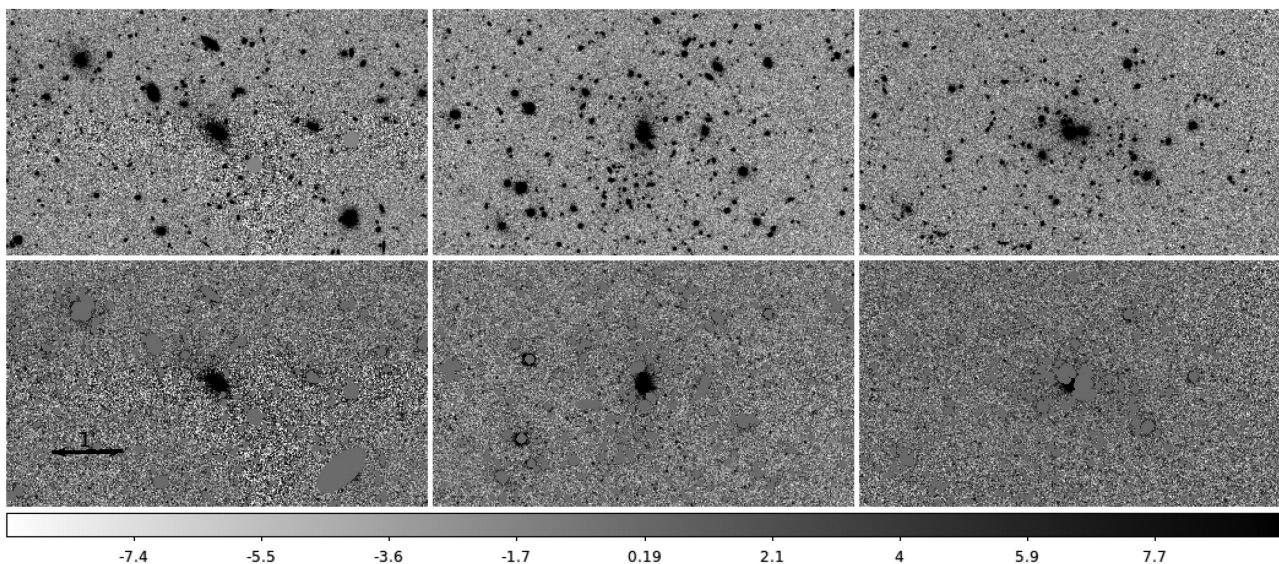


Figure 2. These figures show the r -band images of three galaxy clusters in our sample (top panels), and demonstrate the masking performed on each cluster (bottom panels), excluding the cluster central galaxies. Images are displayed with DS9 linear z -scale. On the bottom left-hand panel, we show a 1 arcmin scale for reference.

compared to using a 2.5 Kron radius masking aperture. In Z19, using a 2.5 Kron radius masking aperture and assuming a 9.6 per cent residue rate for all galaxies, the unmasked cluster galaxy light would make up ~ 14 per cent of the measured diffuse light. We expect the ratio to be around 7 per cent using the 3.5 Kron radius apertures, but likely smaller than 7 per cent.

After the masking process, as mentioned in Section 2.1, we further visually inspect all the clusters, and prune a total of 10 clusters that appear to be incompletely masked (because of image and catalogue mismatching), or appear to be badly affected by nearby stars.

The diffuse light profiles are then calculated as the average pixel values in the unmasked regions of the images in radial annuli, from which we then subtract residual background profiles to acquire the final measurements. The residual background profiles are measured around REDMAPPER random points, which uniformly sample the sky coverage of the REDMAPPER clusters in DES data. The same measurement process applied to the REDMAPPER central galaxies, including masking and averaging pixel values in circular annuli, are applied to the random points. Thus we expect the residual background measurements to contain fluxes of sky background residuals as well as fluxes from undetected foreground and background astronomical sources (Eckert et al. 2020). We do require the random points to be at least 5 arcmin away from the cluster centres to avoid over-subtraction and a total number of 3859 random points are used in our analysis.

In the further measurement process, the clusters and random points are assigned to 40 regions using the KMEANS code² (Steinhaus 1956), which uses a clustering algorithm to divide the sky coverage of the REDMAPPER clusters into regions with approximately the same area. We average the random point radial profiles in each region and use it as an estimation of the sky background of that region. This averaged random profile is subtracted from each of the measured cluster radial profiles in the same region. Each of the subtracted cluster profiles is then corrected to an observer frame at redshift $z = 0.275$ (median redshift of the sample), accounting for both distance dimming and angular-to-physical distance conversion. Finally, we sample the averaged cluster profiles using the jackknife method to estimate their uncertainties. Differently from Z19, we do not subtract the average flux value in the last radial bin of the image.

In Z19, this measurement process has been tested by stacking random points and simulated diffuse light profiles which shows that the random background subtraction and the averaging process produce bias-free measurements. Discussions have also been undertaken about the influence of sky background estimations and the effect of instrument point spread function (PSF) on diffuse light interpretations. We refer the readers to that paper for further details regarding the measurement methods and tests.

2.3 Surface brightness in luptitude

While it is traditional to quantify diffuse light surface brightness in the unit of mag/area, for sky subtracted low surface brightness measurements near the noise limit which can be negative in flux, this leads to extremely noisy figures which are hard to interpret. In this paper, we present the surface brightness measurements of diffuse light in terms of asinh magnitudes proposed by Lupton, Gunn & Szalay (1999), which is informally known as ‘luptitudes’ (and we use lup as a symbol for this unit). The luptitude system behaves very

closely to the traditional log-based magnitude in the high signal-to-noise (S/N) regime, but has the advantage of robustness in the low signal-to-noise (S/N) regime or even when the flux is negative.

We calculate luptitude and its uncertainty from diffuse light flux and uncertainty using the following equations,

$$\mu = m_0 - 2.5 \log_{10} b - a \times \sinh^{-1} \left(\frac{f}{2b} \right), \text{ and}$$

$$\sigma_\mu = \sqrt{\frac{a^2 \sigma_f^2}{4b^2 + f}}. \quad (1)$$

In these equations, $m_0 = 30$ is the zero-point magnitude; $a \equiv 2.5 \log_{10} e = 1.0857$ (Pogson ratio); σ_f is the flux (f) measurement uncertainty; b is the softening parameter, or knee of the luptitude function where standard magnitudes and luptitudes begin to significantly diverge, and is defined as $b \equiv \sqrt{a} \sigma_f \equiv 1.042 \sigma_f$, in which σ_f is fixed to be a flux uncertainty at 500 kpc which sets $b = 0.66571579$.

3 DIFFUSE LIGHT PROFILES

3.1 Flux profile and integrated flux

As mentioned in Section 2.1, we divide the clusters into four richness subsamples following McClintock et al. (2019), $20 \leq \lambda < 30$, $30 \leq \lambda < 45$, $45 \leq \lambda < 60$, and $60 \leq \lambda < 150$, which correspond to mean masses of 1.6×10^{14} , 2.7×10^{14} , 4.3×10^{14} , and $8.0 \times 10^{14} M_\odot$. We compute the diffuse light surface brightness profiles as described in Section 2, accounting for both distance dimming and angular-to-proper distance (at redshift 0.275, 1 arcsec ≈ 4.2 kpc) and convert the fluxes to luptitudes with a zero-point of 30 (see Section 2.3). These surface brightness profiles are also integrated to derive the total diffuse light luminosity as a function of radius, as in

$$F(R) = 2\pi \int_0^R r' L(r') dr', \quad (2)$$

where $L(r')$ is the flux profile. Figs 3 and 4 show, respectively, the surface brightness and integrated brightness profiles of cluster diffuse light in different richness ranges. We estimated the 1σ background fluctuations in the radial range of 0.8 to 1 Mpc to be 0.451, 0.450, 0.498, and 1.394 flux per arcsec² (magnitude zero point is 30) in the four cluster richness bins considered in our study, which correspond to surface brightness limits of 30.08, 30.08, 30.04, and 29.45 lup arcsec⁻².

Unsurprisingly, the surface brightness and integrated brightness of diffuse light in richer clusters is brighter, which can be explained given that richer and thus more massive clusters host more satellite galaxies (Gao et al. 2004), and tidal stripping as well as dwarf galaxy disruption have the opportunity to disperse more stars into the intracluster space. However, the surface brightness and integrated brightness of diffuse light in the cluster central region varies little with cluster richness. This effect is in agreement with the inside-out growth scenario, which assumes that galaxy centres form early in a single star-burst, and the accreted galaxy stellar content at later times are deposited on to the galaxy outskirts (e.g. Oser et al. 2010; van Dokkum et al. 2010; van der Burg et al. 2015). These effects have also been noted in Z05 and Z19.

We further investigate the mass dependence of the diffuse light integrated fluxes within five radii, 15, 50, 150, 300, and 500 kpc, which range from being dominated by the BCG, to being dominated by the diffuse light. We use the cluster mass estimations modelled from cluster weak lensing measurements in McClintock et al. (2019).

²https://github.com/esheldon/kmeans_radec

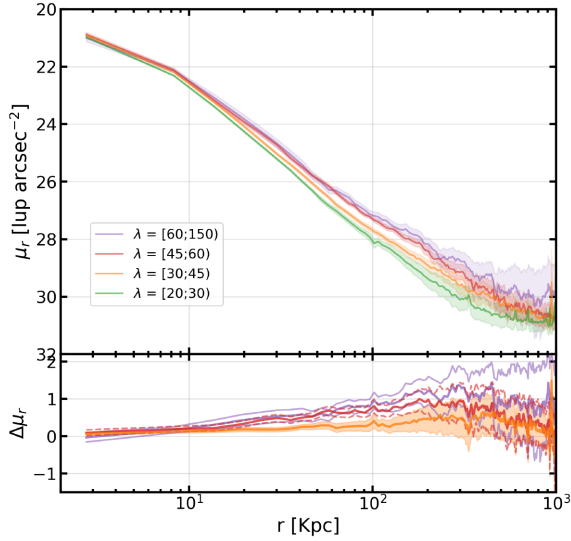


Figure 3. Top panel: Stacked surface brightness profiles of clusters in different richness bins. The shaded regions represent the uncertainties, which are computed through jackknife sampling. The diffuse light profiles show similar profiles in the centre regions, but more massive clusters have a higher level of surface brightness in the outskirts (mass dependence). Bottom panel: The difference between the lowest richness bin profile, used as a reference, and other richness bins profiles. For reference, at redshift 0.275, 1 arcsec \approx 4.2 kpc.

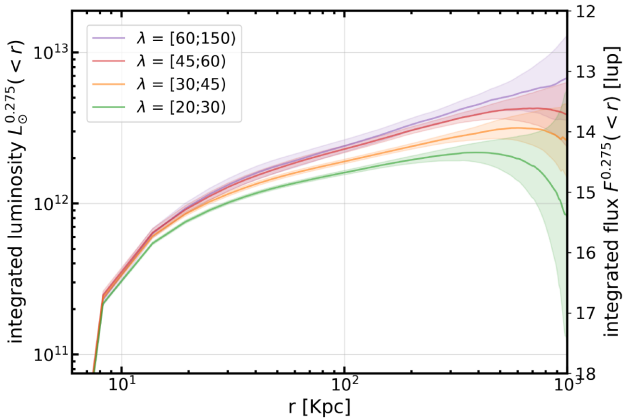


Figure 4. Integrated diffuse light profiles of clusters in different richness bins in luptitude (left y-axis) and solar luminosity unit (right y-axis). The shaded regions represent the uncertainties which are computed through jackknife sampling. The integrated diffuse light profiles show similar profiles in the centre regions, but more massive clusters have a higher level of integrated surface brightness in the outskirts (mass dependence). Note that because diffuse light flux may fluctuate to negative values because of sky subtraction, the integrated flux may show features that decrease with radius in low S/N regions.

Fig. 5 show the integrated fluxes in these radial ranges as a function of the cluster mass. To examine the steepness of the cluster mass dependence, we perform a linear fit to the logarithmic values of the integrated diffuse flux versus M_{200m} , as

$$\log_{10} F(R) = \alpha \log_{10} M_{200m} + \beta, \quad (3)$$

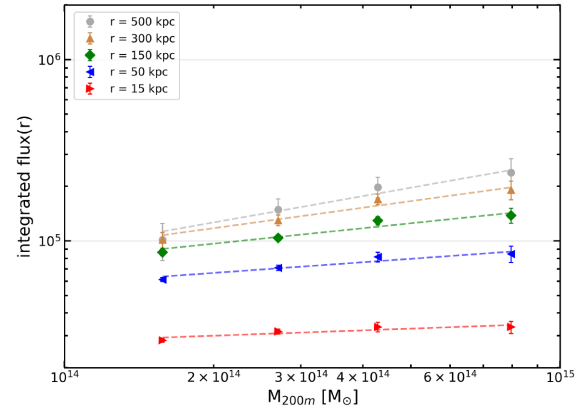


Figure 5. Cluster mass dependence of the integrated diffuse light flux. We compute the integrated fluxes within 5 radii (15, 50, 150, 300, and 500 kpc) and show them as a function of the cluster mass. The dotted lines show a best linear fitting to the logarithmic values of the flux and the cluster mass. The mass dependence slope becomes steeper with larger radii, indicating stronger correlation between diffuse light luminosity and cluster mass.

Table 2. Best linear-fitting parameters for integrated profiles.

Radius (kpc)	α	β	ρ_{cc}
Diffuse light			
15	0.103 ± 0.049	4.328 ± 0.084	0.719
50	0.209 ± 0.064	4.520 ± 0.112	0.847
150	0.300 ± 0.088	4.550 ± 0.155	0.870
300	0.397 ± 0.102	4.495 ± 0.183	0.900
500	0.507 ± 0.118	4.368 ± 0.215	0.922
Cluster total light			
15	0.133 ± 0.049	2.582 ± 0.721	0.727
50	0.247 ± 0.013	1.327 ± 0.186	0.948
150	0.203 ± 0.050	2.354 ± 0.724	0.864
300	0.349 ± 0.066	0.471 ± 0.972	0.918
500	0.442 ± 0.059	-0.709 ± 0.861	0.983

where α is the slope and β is the y-intercept. We also estimate the Pearson correlation coefficient (ρ_{cc}) as,

$$\rho_{cc} = \frac{\text{Cov}(\log_{10} M_{200m}, \log_{10} F(R))}{\sqrt{\text{Var}(\log_{10} M_{200m})\text{Var}(\log_{10} F(R))}}, \quad (4)$$

We report the best-fitting parameter values and the correlation coefficients in Table 2. The slope of the flux– M_{200m} dependence is insignificant at small radii (15 and 50 kpc), but becomes steeper with enlarging radius and is most pronounced at the largest radius. The correlation between total diffuse light luminosity and cluster mass is excellent at large radius beyond 50 kpc: the fitting slope indicating the diffuse light mass-dependence is steep and significant at 500 kpc; the correlation coefficient values is also significant, reaching $\rho_{cc} > 0.9$ outside of 300 kpc. We will return to this correlation and further explore the connection between diffuse light and cluster masses in the upcoming sections.

Note that the above measurements are made around the REDMAPPER-selected central galaxies, which aim to select the cluster galaxies closest to the peak of the cluster matter distribution. Studies have found these selections to be correct for $\sim 75 \pm 8$ per cent of the clusters (Zhang et al. 2019a), but the REDMAPPER algorithm may misidentify a cluster satellite galaxy, or a projected foreground/background galaxy as the centre (Hollowood et al. 2019). Here, we briefly estimate the effect of miscentring using a formula

often adopted in cluster weak lensing analyses (e.g. McClintock et al. 2019), where a well-centred cluster model is integrated over a miscentring offset distribution, weighted by the fraction of miscentred clusters. We model the diffuse light in well-centred clusters as the sum of two Sérsic components, one with a half-light radius R_c of 52.1 kpc and another with an R_c of 2.6 Mpc, as specified in Z19. In addition, the miscentred and well-centred clusters, all have a core central galaxy component with an R_c of 9.13 kpc, since REDMAPPER always pick a galaxy as the centre, even if not necessarily the right one. The miscentring offset shifts the measurement of diffuse light in the inner part of the clusters to outer parts. Overall, it increases the measured flux of diffuse light surface brightness by 10 to 20 per cent beyond 200 kpc radius, while reduces it within the radius range of 100 to 200 kpc.

However, miscentring should have minimal effects on the rest of our results when comparing diffuse light, total cluster light, and cluster weak lensing measurements, since those are measured around the same central galaxies.

3.2 Self-similarity

The distribution of dark matter, hot gas, and even member galaxies in galaxy clusters are known to exhibit a large degree of self-similarity, so that these cluster components follow a nearly universal radial profile after scaling by a characteristic radius related to the cluster’s mass and redshift (e.g. dark matter: Navarro, Frenk & White 1997; hot gas: Kaiser 1986; cluster galaxies: Budzynski et al. 2012). These extraordinary properties often mean a low scatter relation that relates the cluster’s dark matter, gaseous, or satellite galaxy observables to the cluster’s total mass.

In Z19, it was discovered that cluster diffuse light also appears to be self-similar, i.e. clusters of different masses appear to have a universal diffuse light profile at large radii beyond 100 kpc of the cluster centre, after scaling by the cluster’s R_{200m} , indicating a tight relation between diffuse light and cluster mass. In this section, we revisit the diffuse light self-similarity by scaling the surface brightness profiles by R_{200m} . For each cluster richness subsample, we estimate their $\langle R_{200m} \rangle$ using,

$$\langle R_{200m} \rangle = \sqrt[3]{\frac{3\langle M_{200m} \rangle}{800\pi\rho_m(z_m)}}, \quad (5)$$

where M_{200m} is the mean mass of each subsample estimated with the mass-richness relation from McClintock et al. (2019) and z_m is the mean cluster redshift, 0.275; $\rho_m(z_m) = \Omega_m \rho_{\text{crit}} (1+z_m)^3$ is the mean cosmic matter density in physical units for z_m . ρ_{crit} is the critical density at redshift zero. The $\langle R_{200m} \rangle$ values are estimated to be 1305.76, 1561.73, 1822.72, 2240.30 kpc at $20 \leq \lambda < 30$, $30 \leq \lambda < 45$, $45 \leq \lambda < 60$, and $60 \leq \lambda < 150$, respectively.

Fig. 6 shows the diffuse light profiles after scaling by $\langle R_{200m} \rangle$. We observe self-similarity between all the richness bins outside $0.05 r/R_{200m}$ and up to $0.8 r/R_{200m}$ within 1σ .

3.3 Cluster total light

We also derive the radial profiles from the cluster images without masking any objects (as shown in the top panels of Fig. 2). When none of the objects are masked, the cluster images not only contain the light from the diffuse light, but also the rest of the cluster galaxies. The images also contain light from the foreground and background structures, although these contributions are eliminated later by subtracting light profiles derived from random images.

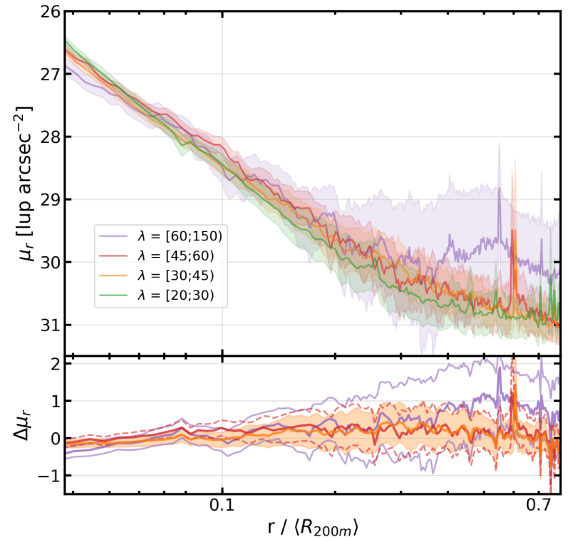


Figure 6. Scaled diffuse light profiles for different cluster richness bins. The smallest radii in this figure would correspond to 52.23, 62.47, 72.91, and 89.61 kpc before scaling the profiles by cluster $\langle R_{200m} \rangle$ for richnesses $20 \leq \lambda < 30$, $30 \leq \lambda < 45$, $45 \leq \lambda < 60$, and $60 \leq \lambda < 150$, respectively; while the largest radii would correspond to 1044.61, 1249.39, 1458.18, and 1792.24 kpc for richnesses $20 \leq \lambda < 30$, $30 \leq \lambda < 45$, $45 \leq \lambda < 60$, and $60 \leq \lambda < 150$, respectively. The profile uncertainties are represented by the shaded regions and estimated using jackknife sampling. All profiles show self-similarities up to $0.8 r/R_{200m}$ within 1σ . Bottom panel: The difference between the lowest richness bin profile, used as a reference, and other richness bins profiles.

Throughout this paper, we refer to the light profiles derived from the unmasked images as the cluster total light profiles.

For the computation of these cluster total light profiles, we follow the same procedure as described in Section 2.2, with the exception that we use the unmasked images for both clusters and random points. When computing the sky brightness level using the unmasked random images, the sky brightness level obtained is higher than that from the masked random images, because we are observing the contribution of all the components of the image. We apply the subtraction between the unmasked cluster images and the random images to derive the cluster total light profiles. We notice these radial profiles to be much noisier at radii larger than $r = 25$ kpc, compared to the diffuse light profiles. Thus, for the regions beyond 25 kpc, we use coarser radial bins to improve the signal to noise. We use 15 radial bins in logarithmic space beyond 25 kpc. The uncertainties of the cluster total light profiles are sampled with the jackknife method applied to the individual profiles.

Fig. 7 displays the cluster total light profiles in comparison to the diffuse light profiles. Both diffuse light and cluster total light profiles become fainter as the radius increases, with the total light surface brightness reaching ~ 28 lup arcsec $^{-2}$ at $r = 500$ kpc. Since the cluster total light is completely dominated by the BCG light within $r \sim 10$ kpc, the cluster total light and diffuse light profiles coincide in this radial range. The bottom panels of Fig. 7 further show the integrated radial profiles of the diffuse light and total light. The total light in the richest clusters reaches a brightness of $2.6 \times 10^{13} L_{\odot}$ at $r = 1$ Mpc, and the cluster total light deviates significantly from the diffuse light beyond ~ 100 kpc.

As in Section 3.1, we derive the integrated flux of cluster total light in five radial ranges, and study their mass dependence as shown in Fig. 8. A linear fit to the logarithmic values between the integrated flux and the cluster mass, M_{200m} , is performed and the best-fitting

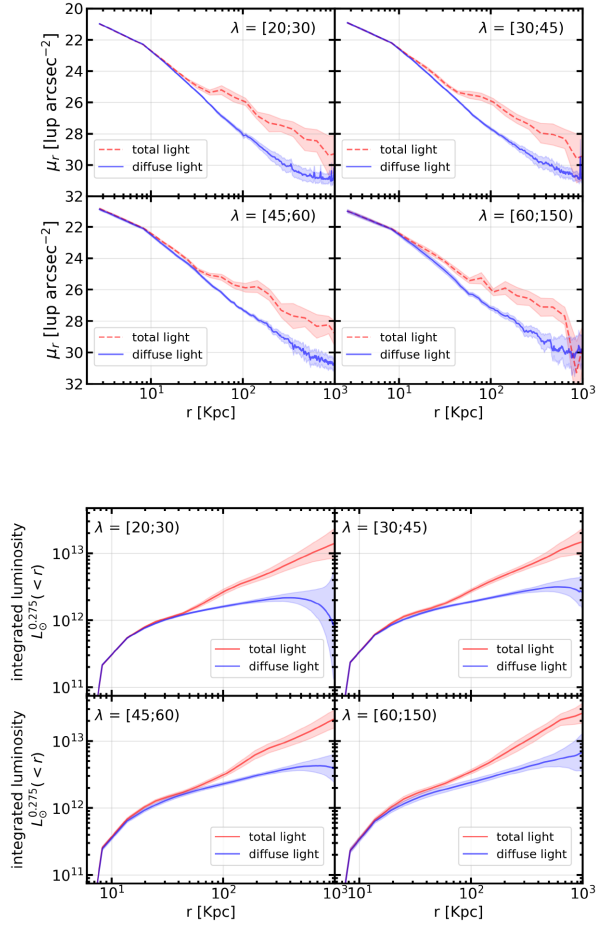


Figure 7. Cluster total light (red dashed line) and the diffuse light (blue solid line) profiles in different cluster richness bins, in terms of surface brightness (upper panels) and integrated fluxes (lower panels) measured in the observer frame at redshift 0.275. The profile uncertainties are represented by the shaded regions and estimated using jackknife sampling. For reference, at redshift 0.275, 1 arcsec \approx 4.2 kpc.

parameters are reported in the lower section of Table 2. The diffuse light and cluster total light flux show increasing mass dependence at larger radius and are well correlated with cluster total mass. At 500 kpc, the diffuse light and cluster total light flux both have significant correlation coefficient values with $\rho_{cc} > 0.9$, and steep mass dependence slopes of 0.507 ± 0.118 and 0.442 ± 0.059 , respectively.

3.4 Diffuse light to cluster total light fraction

A very important property of diffuse light is its fraction in total cluster light. We measure this property by dividing the surface brightness profiles and the integrated profiles of the diffuse light by the corresponding profiles of total cluster light,

$$f_{\text{frac}}(R) = \frac{L_{\text{diffuse}}(R)}{L_{\text{total}}(R)},$$

$$F_{\text{frac}}(R) = \frac{F_{\text{diffuse}}(R)}{F_{\text{total}}(R)}, \quad (6)$$

which is the diffuse light fraction and cumulative diffuse light fraction, respectively. Fig. 9 shows these fractions in different cluster radial and richness ranges. We report those fractions at 50, 300, 700, and 1000 kpc for $20 \leq \lambda < 30$, $30 \leq \lambda < 45$, $45 \leq \lambda < 60$, and

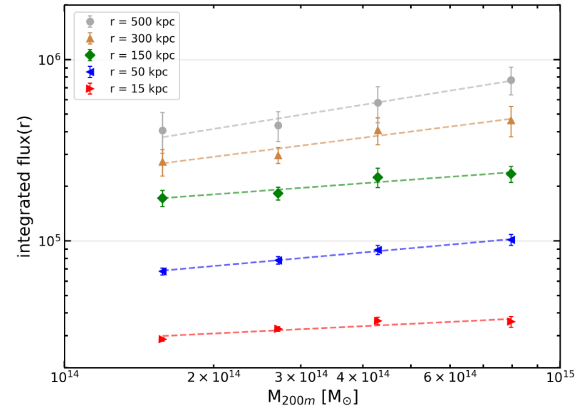


Figure 8. Cluster mass dependence of the integrated cluster total light flux. We compute the integrated fluxes within 5 radii (15, 50, 150, 300, and 500 kpc) and show them as a function of the cluster mass. The dotted lines show the best linear fitting results to the logarithmic values of the flux and the cluster mass. The slope of the linear fits become steeper with larger radii.

$60 \leq \lambda < 150$ in Table 3. Within 50 kpc, diffuse light makes up most of the cluster total light, and the cumulative fraction is above 80 per cent regardless of cluster richness. Beyond 50 kpc, given the faster increase of cluster total light with radius than diffuse light, the cumulative diffuse light fraction steadily decreases with increasing radius, which reaches around ~ 24 per cent at 700 kpc regardless of cluster richness. We do not notice obvious cluster richness/mass dependence of the diffuse light fractions, especially beyond 200 kpc.

Many previous studies have measured diffuse light fraction, but the results seem to be at tension possibly caused by different analysis choices. An important consideration is that the diffuse light fraction changes with the analysis radius, as our measurements demonstrate. Previously, Krick & Bernstein (2007) found that the diffuse light fraction is between 6 ± 5 per cent and 22 ± 12 per cent at one-quarter of the virial radius using r -band, while Montes & Trujillo (2018) found this fraction to be between 8.6 ± 5.6 per cent and 13.1 ± 2.8 per cent at R_{500} , and Z19 measured a diffuse light fraction of 44 ± 17 per cent at 1 Mpc. Our results of diffuse light fraction being ~ 24 per cent at 700 kpc agrees with the ranges reported in the previous work.

How the diffuse light fraction changes with cluster mass is another interesting topic in diffuse light studies. Efforts with semi-analytical studies have suggested an increasing diffuse light fraction with cluster mass, reaching around 50 per cent in clusters of $1.42 \times 10^{15} M_{\odot}$ mass (Lin & Mohr 2004). Observationally Zibetti et al. (2005) found no evidence of mass dependence of the diffuse light fraction. Fig. 9 shows our results demonstrating the mass (in)dependence of the diffuse light fraction in three radii. There is no outstanding difference in the diffuse light fractions between cluster richness subsets within 300 kpc, which is in agreement with Zibetti et al. (2005). However, since our results are derived in physical radius, the diffuse light fractions will likely change with cluster mass when derived in terms of the normalized cluster radius such R_{200m} . In addition, at large radius, we notice a low significance increase of the diffuse light fraction with mass, although higher signal-to-noise measurements will be needed to confirm this trend.

4 COMPARISON TO WEAK LENSING

Recent studies have presented significant evidence of a connection between diffuse light and the cluster dark matter (or total mass) distribution – diffuse light profiles have similar radial slopes with

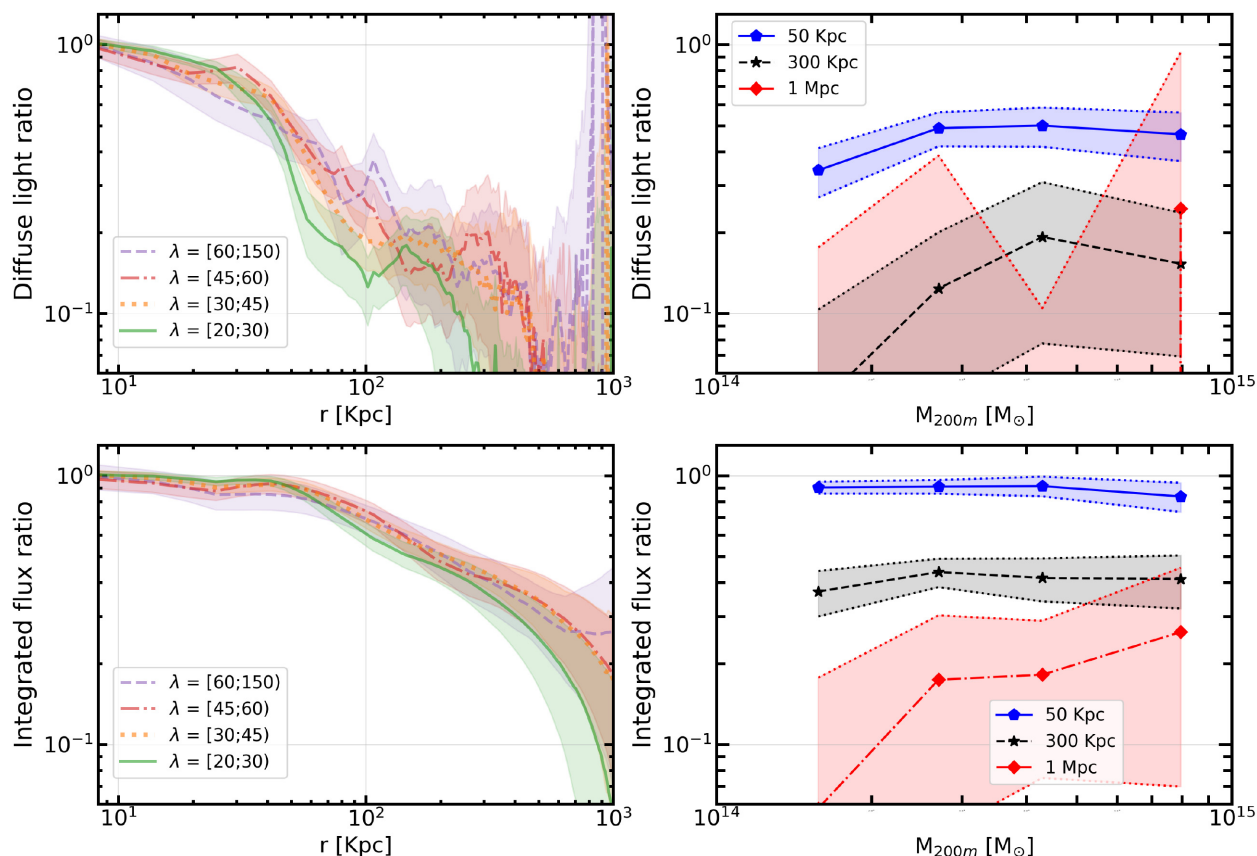


Figure 9. Upper panels: Diffuse light fraction in the cluster total light, as a function of radius (left-hand panel) and the cluster total mass measured. Lower panels: Cumulative diffuse light fraction in the cluster total light, as a function of radius (left-hand panel) and cluster total mass (right-hand panel). The mass dependence increases mildly with radius, whereas the diffuse light ratio at 50 kpc presents no trend with increasing of mass and a mild trend at 300 kpc; while integrated flux ratio presents no trend at 50 and 300 kpc and a mild trend at 1000 kpc.

Table 3. The diffuse light surface brightness fraction and cumulative flux fraction in cluster total light at various cluster radii.

λ	50 kpc	300 kpc	700 kpc	1 Mpc
Surface brightness fraction (per cent)				
20–30	34.1 ± 7.1	4.5 ± 5.8	–	–
30–45	48.9 ± 7.1	12.4 ± 7.7	–	–
45–60	50.0 ± 8.3	19.3 ± 11.5	–	–
60–150	46.3 ± 9.5	15.3 ± 8.4	–	–
Cumulative flux fraction (per cent)				
20–30	90.3 ± 4.6	37.0 ± 7.1	16.2 ± 9.9	5.8 ± 11.9
30–45	91.0 ± 5.3	43.8 ± 5.3	26.2 ± 9.9	17.4 ± 12.8
45–60	91.4 ± 7.7	41.6 ± 7.6	27.0 ± 9.6	18.2 ± 10.7
60–150	83.6 ± 10.4	41.3 ± 9.2	26.3 ± 10.7	26.2 ± 19.2

the total cluster dark matter density distribution (e.g. Pillepich et al. 2014; Montes & Trujillo 2018; Pillepich et al. 2018); The diffuse light surface brightness contours are highly similar to the cluster mass density contours (e.g. Montes & Trujillo 2019; Alonso Asensio et al. 2020). In Z19 and this paper (Fig. 6), we also note the diffuse light surface brightness to be self-similar, appearing to have a universal radial profile after scaling by cluster R_{200m} radius.

These analyses raise an interesting question – does diffuse light trace the cluster dark matter, and thus trace the cluster total matter distribution? In this section, we explicitly explore this question by

comparing the diffuse light radial dependence with that of the cluster total matter measured through weak lensing.

4.1 Weak-lensing measurements

The cluster total matter radial distributions are derived through the tangential shear measurements from weak lensing around the clusters of interest. The azimuthally averaged tangential shear is related to the 2D surface density as:

$$\gamma_T = \frac{\bar{\Sigma}(< R) - \bar{\Sigma}(R)}{\Sigma_{\text{crit}}} = \frac{\Delta \Sigma(R)}{\Sigma_{\text{crit}}}, \quad (7)$$

where $\bar{\Sigma}(< R)$ is the average cluster surface mass density inside the radius of R , $\bar{\Sigma}(R)$ is the surface mass density at the radius of R , and Σ_{crit} is given as,

$$\Sigma_{\text{crit}}(z_s, z_l) = \frac{c^2}{4\pi G} \frac{D_s}{D_l D_{ls}}, \quad (8)$$

where z and D denote the redshift and the distance to the object, respectively, and the subscripts s and l, the source and the lens. We use $\Delta \Sigma(R)$ for the following analyses, as described ahead.

The shape catalogue (Zuntz et al. 2018) used for the weak lensing measurements in this paper is produced by METACALIBRATION (Sheldon & Huff 2017). In contrast to other shear estimation algorithms, METACALIBRATION adopts galaxy images themselves to relate the measured ellipticity of galaxies to the true shear through the 2×2 response matrix, \mathbf{R} . The response matrix is calculated

by deconvolving the point spread function (PSF) from the image, injecting a small artificial shear and re-convolving the image with the representation of the PSF. The resultant representation of the mean true shear, $\langle \gamma \rangle$, can be written as,

$$\langle \gamma \rangle = \langle \mathbf{R} \rangle^{-1} \langle \mathbf{e} \rangle. \quad (9)$$

In practice, we define the average response as $\tilde{R} = (\mathbf{R}_{11} + \mathbf{R}_{22})/2$. We have checked that given the noise level in our data, using this approximation does not affect our measurement significantly.

In addition, there is a second component that contributes to the response matrix, which is due to the selection of the galaxies, R_{sel} . Since the selection response is only meaningful as ensembles of galaxies, we make use of the mean value $\langle R_{\text{sel}} \rangle$. For details of METACALIBRATION, we refer the readers to Sheldon & Huff (2017).

In McClintock et al. (2019), it is shown that the optimal estimator for $\Delta \Sigma(R)$, including the response is,

$$\widetilde{\Delta \Sigma}(R_k) = \mathcal{B}(R_k) \frac{\sum_{i,j} \omega_{i,j} e_{T,i,j}}{\sum_{i,j} \omega_{i,j} \Sigma_{\text{crit},i,j}^{-1} (\tilde{R}_i + \langle R_{\text{sel}} \rangle)} \Big|_{R_k < R \leq R_{k+1}}, \quad (10)$$

for the k -th radial bin, where $\mathcal{B}(R_k)$ is the correction factor for contamination from the cluster members and foreground galaxies (boost factor), which we describe in the next paragraph. The summation goes over all the lens (j) – source (i) pairs, and

$$\Sigma_{\text{crit},i,j}^{-1} = \Sigma_{\text{crit}}^{-1}(z_{l_j}, z_{s_i}^{\text{MC}}), \quad (11)$$

where $z_{s_i}^{\text{MC}}$ is a random Monte Carlo sample from the full photo- z probability distribution for the i -th source and

$$\omega_{i,j} = \Sigma_{\text{crit}}^{-1}(z_{l_j}, \langle z_{s_i} \rangle) \text{ if } \langle z_{s_i} \rangle > z_{l_j} + 0.1 \quad (12)$$

for which the photometric redshifts of galaxies are estimated with Directional Neighbourhood Fitting (DNF) algorithm (De Vicente, Sánchez & Sevilla-Noarbe 2016).

Even with a redshift cushion of 0.1 between the lens and the source, because of photometric redshift uncertainties and contamination from the cluster members, some of the source galaxies we use are in front of the lens clusters. These galaxies do not retain any gravitational shear due to the lens, therefore dilute the weak lensing signal. We correct for this effect following the procedure in Sheldon et al. (2004),

$$\mathcal{B}(R_k) = \frac{N_{\text{rand}} \sum_{i,j} \omega_{i,j}}{N_{\text{lens}} \sum_{k,l} \omega_{k,l}}, \quad (13)$$

where i and j represent the lens-source pairs, and k,l the random-source pairs.

In Fig. 10, we show the WL measured surface mass density profiles of the four cluster richness subsets used in this paper. These measurements will be used for direct comparison to the diffuse light radial profiles. The validation cross-component shear measurements around the same clusters, are also shown in Fig. 10, which is consistent with a null signal and indicates the shear measurements to be relatively bias-free. Multiplicative bias due to shear calibration or redshift calibration bias may still be present, but will not affect the conclusions of the paper as we do not compare the absolute amplitudes of the lensing and diffuse light luminosity measurements.

4.2 Conversion into annular surface differential density

We aim to directly compare the stacked diffuse light radial profiles to the stacked cluster mass profiles measured through weak lensing. However before we start, we need to carefully evaluate what observational quantities to use for such comparison.

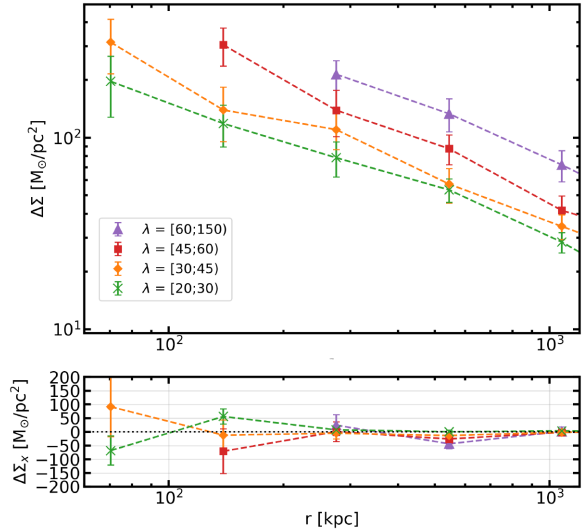


Figure 10. Upper panel shows the cluster mass profiles in four richness bins measured through WL tangential shear estimations. Lower panel shows the validation cross-component shear measurements around the same clusters, which is consistent with a null signal and indicates the shear measurements to be relatively bias-free. The cluster mass profiles measured through WL tangential shear estimations is compared to the diffuse light profiles in Section 4.

For the diffuse light profiles, we directly measure their surface brightness as a function of radius, which informs us about the diffuse light surface stellar mass density on the plane of the sky. Therefore, it would have been ideal to compare this quantity to the surface mass density of galaxy clusters, $\Sigma(r)$. However, in DES weak lensing measurements (Section 4.1), the direct observable is the cluster tangential shear profile, which probes the cluster’s differential surface mass density, $\Delta \Sigma(r)$, and is related to the surface mass density $\Sigma(r)$ as,

$$\Delta \Sigma(R) = \frac{2}{R^2} \int_0^R R' \Sigma(R') dR' - \Sigma(R). \quad (14)$$

Fig. 10 shows the cluster $\Delta \Sigma(r)$ profiles derived from weak lensing in each of the richness subsamples.

Although it is possible to derive $\Sigma(r)$ from the weak lensing-measured $\Delta \Sigma(r)$ as is done in Z19, these derivations rely on model assumptions of the cluster mass distribution. To avoid our diffuse light-weak lensing comparison being affected by model choices, we have decided instead to convert the diffuse light and cluster total light surface brightness into a differential surface brightness as

$$\Delta L(R) = \frac{2}{R^2} \int_0^R R' L(R') dR' - L(R). \quad (15)$$

Note though that cluster differential surface mass density $\Delta \Sigma(R)$ is inevitably affected by the $\Sigma(R)$ values at small radius, where the diffuse light profiles have been shown to have significantly different radial slopes than the cluster total mass distribution in Z19. To eliminate the small radial contributions, we further convert $\Delta \Sigma(R)$ into the Annular Differential Surface Density (ADSD: Mandelbaum et al. 2013), Υ , as

$$\Upsilon_{\text{WL}}(R; R_0) = \Delta \Sigma(R) - \left(\frac{R_0}{R}\right)^2 \Delta \Sigma(R_0). \quad (16)$$

In the above equation, R_0 is a chosen radius within which the cluster’s surface mass density will not affect the measurements of $\Upsilon(R; R_0)$. In this paper we use a R_0 value of 200 kpc. Similarly, we convert the

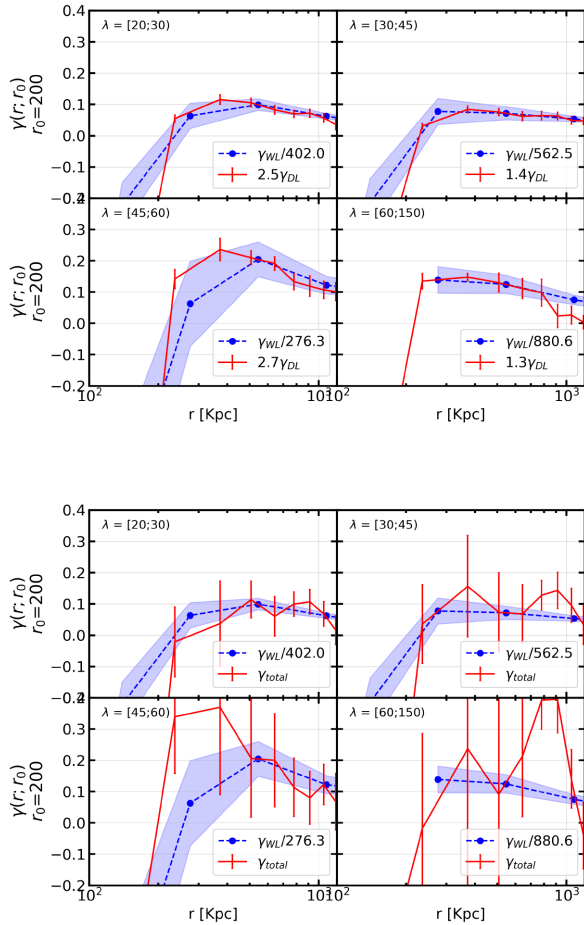


Figure 11. Comparison between the Υ_{DL} and Υ_{WL} profiles (upper panels) and the Υ_{total} and Υ_{WL} profiles (lower panels). The red solid lines represent the Υ_{DL} and Υ_{total} profiles while the blue dashed lines represent the Υ_{WL} profiles. The uncertainties of the profiles are derived with the jackknife sampling method. Resemblance between diffuse light ADSB, cluster total light ADSB, and cluster total mass ADSB profiles is seen in this plot, and diffuse light seems to trace the cluster total matter distribution beyond 300 kpc closer than cluster total light.

diffuse light and cluster total light differential surface brightness into Annular Differential Surface Brightness (ADSB) as

$$\Upsilon_{DL/total}(R; R_0) = \Delta L_{DL/total}(R) - \left(\frac{R_0}{R}\right)^2 \Delta L_{DL/total}(R_0), \quad (17)$$

where the subscript DL/total means that the equation applies to both diffuse (DL) and total light of the galaxy cluster.

4.3 Comparison result

In Fig. 11, we show the comparisons between the WL-derived cluster mass ADSD and the ADSB of diffuse light, as well as the comparison between the cluster total mass ADSD and the ADSB of cluster total light. Note that the values of the WL-derived cluster ADSD profiles are scaled by the average weak lensing and total-light ratio, ADSD/ADSB, between 550 and 1050 kpc, and the values of the diffuse light ADSB profiles are also scaled by the average diffuse/total-light ratio between 550 and 1050 kpc, so the cluster ADSD(B) profiles are in similar numerical ranges.

Overall, we find that the ADSB profiles of diffuse light and the ADSD profiles of cluster total mass have similar radial dependence

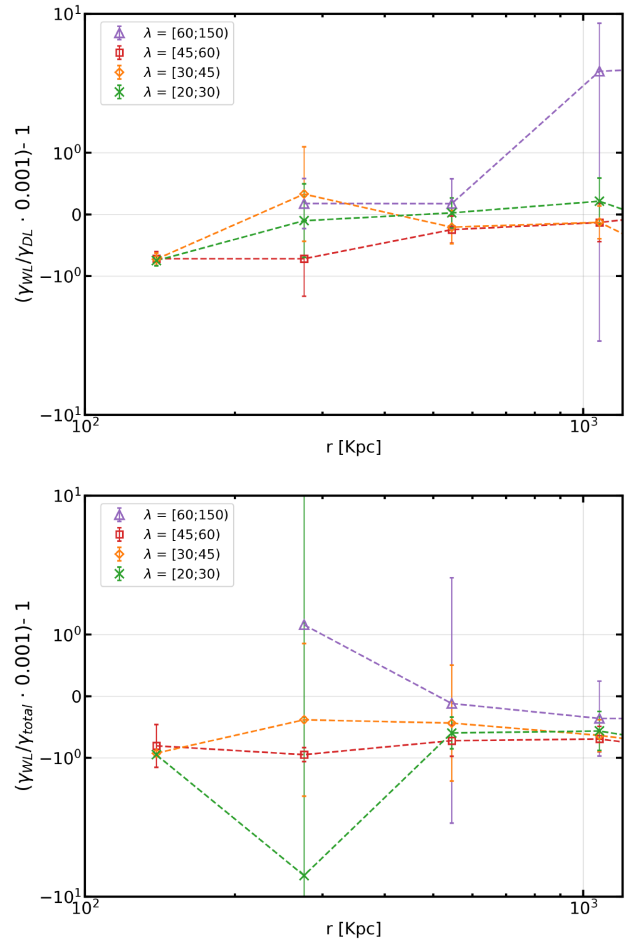


Figure 12. Upper panel: Ratios between Υ_{WL} and Υ_{DL} as a function of cluster radius. Lower panel: Ratios between the Υ_{WL} and Υ_{total} as a function of cluster radius. Note that the y-axes of the two panels use a combination of linear and log scales, linear within -1 to 1 , transitioning into log scales outside of 1 or -1 to show large deviations.

especially outside 200 kpc, consistent within their 1σ measurement uncertainty range. However, the ADSB or ADSD profiles, within 200 kpc, start to show some deviations, but the deviation is not significant, and the profiles are still consistent within 1σ . Interestingly, the ADSB or ADSD profiles of cluster total light and cluster mass are also consistent within their 1σ uncertainty ranges, although the ADSB profiles of cluster total light are measured to be much noisier than the ADSB profiles of cluster diffuse light. We further derive the ratios between Υ_{WL} profiles and Υ_{DL} as well as between Υ_{WL} and Υ_{total} , as shown in Fig. 12. Again, we note that the ADSB(D) profiles of diffuse light and cluster total mass have consistent radial dependence outside 200 kpc, but show deviations at a low S/N within 200 kpc. The ADSB(D) profiles of cluster total light and cluster total mass also appear to have consistent radial dependence, but the comparisons are much noisier.

Given these comparisons, we conclude that we see evidence of consistency between diffuse light and cluster total mass radial distributions from weak lensing measurements especially outside 200 kpc of the cluster centre. However, given the large uncertainties associated with the ADSD(B) observables, further high S/N measurements of both the cluster weak lensing signals and diffuse light surface brightness will be necessary to distinguish any subtle

differences. We will return to this topic of radial resemblance between cluster diffuse light and total mass distribution in Section 5.1.

5 DIFFUSE LIGHT PROPERTIES IN SIMULATION

In the previous section, we notice similarities between the diffuse light radial profiles and the cluster total mass radial profiles, but can not draw a conclusive statement about their consistency. Diffuse light simulations offer more insight into this aspect. In this section, we turn to the Illustris The Next Generation (IllustrisTNG) hydrodynamic simulation (Marinacci et al. 2018; Naiman et al. 2018; Nelson et al. 2018; Pillepich et al. 2018; Springel et al. 2018; Nelson et al. 2019) to investigate the similarity between the distributions of the diffuse light and the cluster total mass (Pillepich et al. 2018). The IllustrisTNG simulation is a powerful, high-resolution hydrodynamic cosmological simulation, which considers gravitational and hydrodynamic effects as well as sophisticated models for processes of radiation, diffuse gas, and magnetic field.

We use the IllustrisTNG 300-1 simulation and in particular, the snapshot at redshift 0.27, which matches the median redshift of our REDMAPPER cluster samples. We select haloes with masses $M_{200m} \gtrsim 7.5 \times 10^{13} M_{\odot} h^{-1}$, which roughly matches the mass range of the REDMAPPER clusters analysed in this paper, and eliminate haloes that are within 20 Mpc/h of the snapshot boundaries to avoid boundary effects. These selection criteria yield 110 haloes suitable for our analysis. We then derive the densities of the simulation stellar particles, dark matter particles, and gaseous particles as a function of 3D halo radius, and also 2D projected radius on the simulation x/y plane. Note though the stellar distribution in the IllustrisTNG 300-1 simulation has not fully converged, which is limited by the simulation resolution as studied in Pillepich et al. (2018). The simulation convergence issue affects the total stellar mass in haloes and the shape of the halo stellar mass radial profile within the central 2–4 kpc. Pillepich et al. (2018) has rescaled the TNG 300-1 stellar mass results using the smaller volume but higher resolution TNG 100-1 simulation, but we do not rescale our results based on TNG 300-1 given the small number of haloes in our interested mass range in the TNG 100-1 simulation.

5.1 Does diffuse light have the same radial dependence with cluster total mass?

To derive the radial density profiles of the diffuse light in the simulation, we first compute the radial density profiles of the stellar particles contained in subhaloes. The stellar mass of subhaloes within twice the stellar mass half-radius of the subhaloes are used to derive these profiles, although we limit the calculation to the subhaloes of stellar mass above $10^9 M_{\odot}$ (contained within the radius of V_{\max}). The subhalo radius and the subhalo mass thresholds are selected to roughly match the galaxy masking radius and depth limit of our measurements. This subhalo stellar profile is then subtracted from the radial density profiles of all the stellar particles around the haloes, and the subtracted result is considered the diffuse stellar radial distribution. These subtractions are done in both 3D and 2D to derive the 3D and projected 2D radial distributions of the diffuse light.

The upper and middle panels of Fig. 13 show those radial dark matter, gaseous and stellar profiles, averaged over all the selected haloes to reduce noise. In either the 3D radial profiles or the projected 2D radial profiles, the total halo stellar content appears to have the most concentrated radial distribution, while the halo gaseous

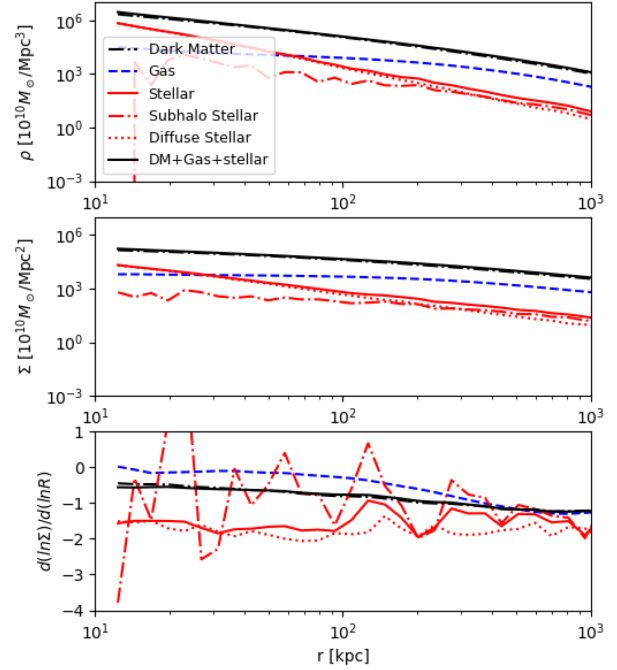


Figure 13. The radial density profiles in 3D (upper panel) and 2D projected distances (middle panel) of various cluster mass components in the IllustrisTNG 300-1 simulation – dark matter, gas, diffuse light, and subhalo stellar mass – as well as the total halo mass densities. Lower panel: The radial derivative of the radial densities in 2D projected space. Throughout the plots, we notice that the halo diffuse light appears to be the most concentrated, while the halo gaseous content appears to have the lowest radial concentration, which is consistent with diffuse light being produced from galaxy stripping/disruption towards the halo centre, while gaseous particles experience frequent interactions that flatten out their radial distribution. The most faithful radial tracer of the halo dark matter distribution appears to be the subhalo stellar mass.

component appears to have the least concentrated radial distribution due to the high interaction rate between the gaseous particles. Neither the stellar particles nor the gaseous particles appear to faithfully follow the radial dependence of dark matter (or halo total mass). However, after separating the total halo stellar content into the diffuse and the subhalo components, we notice that the subhalo stellar distribution remarkably well, while the diffuse stellar component deviates further from the halo dark matter radial distribution, and becomes the most radially concentrated halo component.

The lower panel of Fig. 13 shows the 2D radial density derivatives of the various halo components. As noted above, the most faithful radial tracer of the halo dark matter (or the halo total mass) distribution appears to be the subhalo stellar mass. The halo gaseous component has the mildest radial slope among all of the analysed components, while the halo diffuse stellar component has the steepest radial slope and thus is the most radially concentrated. Since diffuse light is expected to originate from galaxy stripping/disruption, which can only happen at small halo radii after the subhaloes’s outer dark matter component is completely destroyed, these simulation findings are not particularly surprising, if not limited by the relaxation time-scale of the diffuse light after their origin.

We further convert the simulation projected 2D radial densities into a Υ radial profile, so as to be more directly comparable to the measured cluster matter/diffuse light density profiles in Section 4.2. The conversion made it less obvious to directly spot the radial

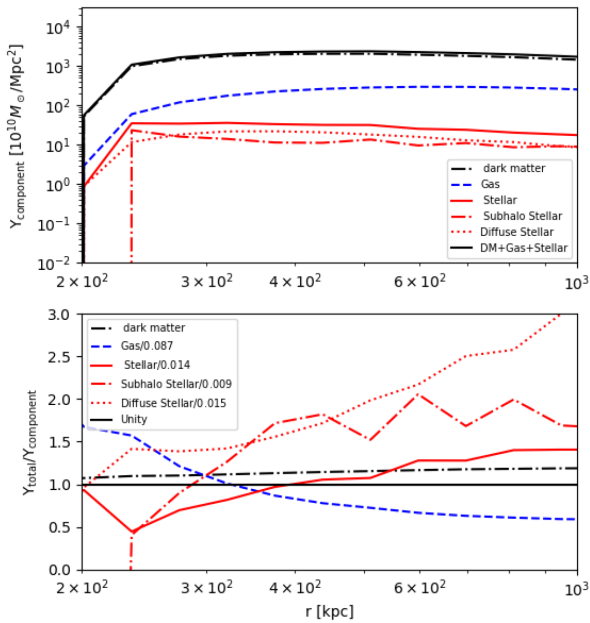


Figure 14. Upper panel: the Υ density profiles of various cluster mass components – dark matter, gas, diffuse light, and subhalo stellar mass – as well as the total halo mass densities, derived from the 2D projected radial density profiles in Fig. 13. Lower panel: the relative ratios between the Υ profiles of halo total mass and the various halo mass components – dark matter, gas, diffuse light, and subhalo stellar mass. The Υ profiles of the subhalo stellar mass appears to have the same radial trend with the total halo mass profile, while the Υ profile of the halo diffuse light appears to drop more rapidly with increasing radius than the total halo mass Υ profile. The least radially concentrated halo mass component, i.e. the halo gaseous mass, has a Υ profile that drops least rapidly with increasing radius.

concentration of the various halo components as shown in the upper panel of Fig. 14, thus we plot the ratios between the various component’s Υ profile to the Υ profile of the total halo mass. The Υ profile of halo diffuse light drops most quickly with halo radius, while the least concentrated halo gaseous component has a Υ profile that drops the least quickly with halo radius. The Υ profile of the subhalo stellar mass appears to have consistent radial trend with the total halo mass. We conclude that the simulation results do not support that diffuse light is a faithful radial tracer of the cluster total mass, although cluster satellite galaxy stellar content is.

We note that in this Υ profile comparison, the radial dependencies of the various halo components appear to be only distinguishable when the measurements are made with high S/N. Given that the Υ ratios between diffuse/total stellar and cluster mass change, at most, by a factor of ~ 3 from 200 to 1000 kpc, our observational-based measurements in Section 4.2 likely does not have enough signal to noise to distinguish dissimilarity of radial trends between diffuse light, cluster total light, and total mass – in the future, higher S/N measurements of cluster weak lensing signals as well as light distributions are necessary to confirm our findings in observations.

5.2 Is diffuse light a good indicator of cluster mass?

In Section 5.1, we find that simulation diffuse light is not a faithful radial tracer of the cluster matter distribution, but our analysis as well as previous studies have clearly noted a strong correlation between diffuse light and the cluster’s total mass (e.g. Pillepich et al. 2014; Montes & Trujillo 2018; Pillepich et al. 2018), such as the similar

shape in the radial density contour lines between diffuse light and cluster mass (e.g. Montes & Trujillo 2019; Alonso Asensio et al. 2020) and the self-similarity of the diffuse light radial profiles (Z19). It is possible that although diffuse light does not faithfully trace the cluster matter distribution, it simply follows a different radial distribution that still has a strong dependence on cluster total mass. Thus, even if the diffuse light profiles cannot be used to directly map out the dark matter distribution inside clusters, its total luminosity can still serve as a strong cluster mass indicator.

In this subsection, we examine the correlations between halo mass and the various halo baryonic mass components, including the diffuse light, the sub-halo stellar mass, and the gaseous mass. For each halo in the simulation that are at least $20 \text{ Mpc } h^{-1}$ away from the simulation boundaries (to avoid the results being affected by the boundary of the simulation), we derive their diffuse stellar masses, subhalo stellar masses, total stellar masses (diffuse + subhalo), and gaseous masses, integrated over 3D radial ranges. The relations between the masses of those components and the cluster’s total mass is shown in Fig. 15.

In the radial ranges above 50 kpc, all the cluster baryonic mass components show clear correlations with cluster mass. From 15 to 50 kpc, the cluster subhalo stellar mass do not show significant correlation with cluster mass; the diffuse and the gaseous mass still show correlations, but the mass dependence is milder than the other radial ranges as measured by the slope of the component-mass/halo-mass relations.

A particularly interesting quantity is the scatters of these component-masses at fixed halo mass. In the lower panel of Fig. 15, we show the mean scatter of the component-masses around their mean values in a fixed halo mass range. As well known (e.g. Voit 2005; Kravtsov, Vikhlinin & Nagai 2006) in previous studies, the halo gaseous mass is an excellent low-scatter indicator of halo mass, showing the lowest scatter in our examination – around 0.1 dex throughout the 15 kpc to the 500 kpc radial range. The diffuse stellar mass, appears to be the next best low-scatter mass indicator with a scatter around 0.2 to 0.25 dex in the radial range of 15 to 300 kpc. However, the scatter of the diffuse stellar mass does increase with radius caused by the rapid decrease of diffuse stellar density with radius. The halo total stellar mass has consistent scatter with the halo diffuse mass within 300 kpc, but this is likely due to the domination of halo diffuse light in the total halo stellar content within this radius range. The subhalo stellar mass has the highest scatter among all of the probed components, around 0.2 to 0.5 dex depending on the radial or halo-mass range. Outside of 300 kpc, subhalo stellar mass starts to have similar scatter with the diffuse mass, and meanwhile becomes a bigger contributor to the halo total stellar mass over the diffuse stellar mass.

Comparing those stellar mass components, we highly recommend using halo diffuse stellar mass, or halo total stellar mass within 500 kpc as a robust, low-scatter halo mass indicator. The halo total stellar mass estimation must include halo diffuse light to minimize the scatter within 300 kpc, which has not been studied in previous analyses (Anbajagane et al. 2020; Palmese et al. 2020). This simulation analysis conclusion is also in agreement with our observational result in Section 3.1, in which we find strong correlation between diffuse light luminosity and cluster total mass, which is even more evident than the correlation between cluster total light and mass (Section 3.3).

Note though, these simulation conclusions are derived with halo components mass enclosed within 3D radii, while observations are almost always measured in 2D projected radii, and thus affected by foreground and background structures. We find that using halo stellar mass enclosed within 2D projected radii increases its scatter, but it

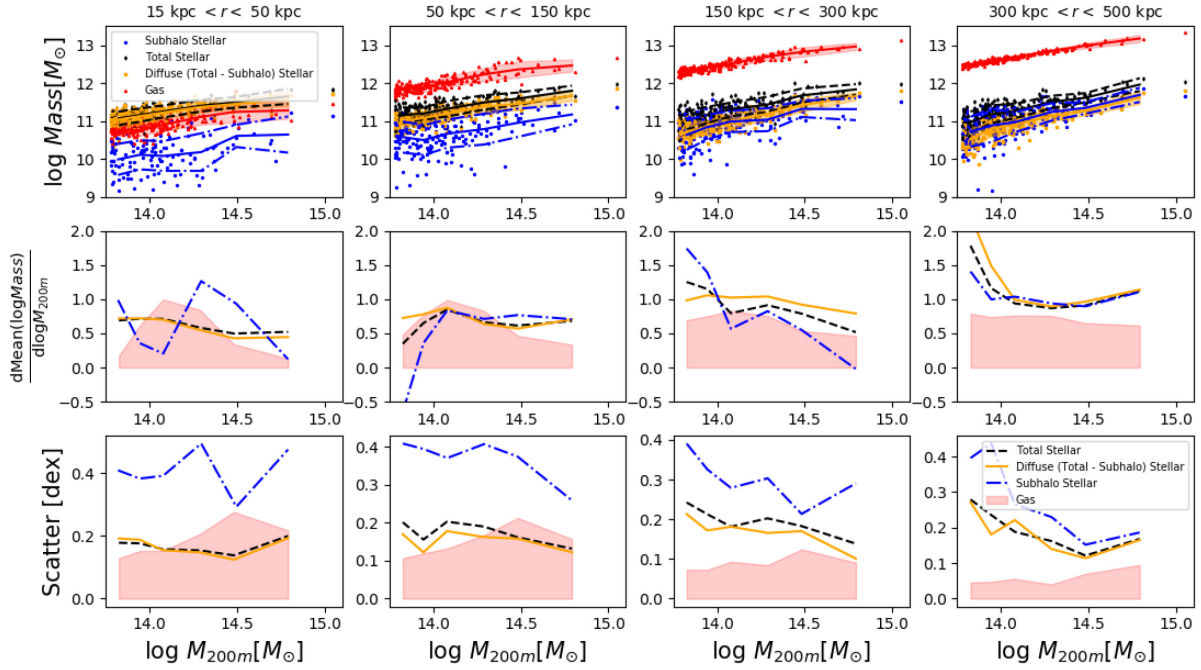


Figure 15. Upper panel: Halo mass components integrated in four radial ranges *VS* halo total mass M_{200m} in the IllustrisTNG 300-1 simulation. Middle panel: Slopes of the mean relations between the various halo mass components and cluster total mass. Lower panel: Scatter of the various halo mass components in fixed halo mass ranges, which shows that the halo gaseous component has the least scattered halo mass indicator, while the halo diffuse light also appears to be a reasonable halo mass indicator with relatively low scatter.

may be possible to reduce such a scatter in real observations with imaging colour information (we note that the satellite galaxies in massive haloes in the simulation display broader colour distributions than observations). Given the vital importance of developing low-scatter halo-mass indicators in cluster cosmological studies, it would be interesting to carry out observational studies of cluster total stellar mass or cluster diffuse stellar mass, especially using multiwavelength data that can observationally evaluate the scatter of cluster mass indicators (e.g. Farahi et al. 2019; Palmese et al. 2020).

5.3 Additional diffuse light properties

As a qualitative comparison to the observational results presented in Section 3, we derive additional diffuse stellar mass properties in the IllustrisTNG 300-1 simulation and show those in Fig. 16. We demonstrate the 2D-projected radial profiles of the diffuse stellar mass and the halo total stellar mass, in two halo mass ranges (limited by the small size of the IllustrisTNG cluster sample), and then derive the ratios between the two as the diffuse stellar fraction in the simulation.

These two results are qualitatively comparable to the observational results shown in Figs 3, 7, and 9. We find that diffuse stellar/light is more abundant in more massive clusters, and the diffuse stellar/light fractions do not appear to change with cluster mass. However, the diffuse stellar fractions appear to be significantly higher in the simulation than in observations, as high as ~ 40 per cent at 1 Mpc of the cluster centre, while the observational measurements are around ~ 30 per cent. It is possible that diffuse light has been overproduced in the simulation.

We also averaged the diffuse stellar mass profiles after scaling by cluster radius (R_{200m}). In good agreement with our observational finding (Section 3.2), the diffuse stellar mass profiles also display

self-similarity, that their radial profiles appear to be uniform after scaling by cluster radius R_{200m} .

6 CONCLUSIONS

In this paper, we present for the first time a direct comparison of the radial dependence of the diffuse light surface brightness and the weak-lensing measured cluster matter distribution, for a statistically large cluster sample with high S/N diffuse light measurements to a cluster radial range of 1 Mpc. We also present both observational and simulation evidence for a strong correlation of diffuse light luminosity with cluster mass. The findings can be summarized as the following.

(i) Strong correlation between diffuse light brightness and cluster mass at large radius: We observe that more massive clusters have more diffuse light in the regions outside 20 kpc of the cluster centre, and the mass dependence becomes steeper with increasing cluster radius. The total stellar luminosities contained within 15 kpc of the cluster centres are almost indistinguishable between clusters of different richnesses/masses, but the total stellar luminosities contained around ~ 300 kpc of the cluster radius show significant correlation with cluster total mass.

(ii) Self-similarity of the diffuse light radial profiles: the diffuse light surface brightness radial profiles appear to have a universal distribution at intermediate and large radius after scaling by cluster R_{200m} .

(iii) Mass (in)dependence of the diffuse light fraction: we derive the diffuse light fraction in total cluster stellar luminosity as a function of cluster radius and mass. The cumulative diffuse light fraction drops with enlarging cluster radius, reaching ~ 24 per cent at ~ 700 kpc. Interestingly, we do not find diffuse light fraction to be dependent on cluster mass within 1 Mpc of the cluster radius,

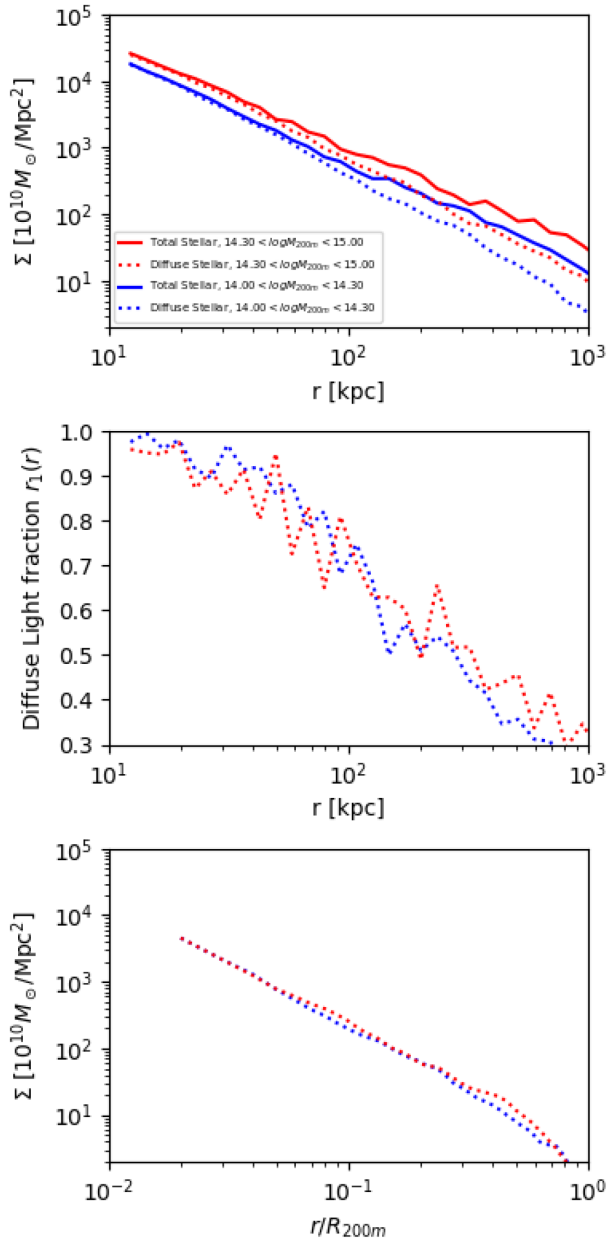


Figure 16. Diffuse stellar mass properties in the simulation: the diffuse stellar mass and cluster total stellar mass radial profiles (upper panel), the diffuse stellar fraction (middle panel) and the cluster R_{200m} -scaled diffuse stellar mass and cluster total stellar mass radial profiles (bottom panel). These diffuse stellar properties as well as the cluster total stellar properties are in qualitative agreement with the observational measurements in this paper.

possibly because the cluster growth is well correlated with diffuse light accretion within this radial range.

(iv) Comparison to weak lensing matter distribution: we directly compare the radial density distribution of diffuse light to that of the cluster total matter (including dark matter) measured through weak lensing. We find that the diffuse light radial distributions indeed show some level of resemblance with the cluster matter distributions. In addition, the radial distribution of cluster total stellar mass also appears to have a similar, but noisier similarity with cluster matter.

(v) Diffuse light properties in the IllustrisTNG simulation: In the IllustrisTNG simulation, the diffuse light radial distribution is more

concentrated towards the centre than the cluster mass (including dark matter mass) distribution, while the radial profile of the cluster subhalo stellar mass appears to well match that of the cluster mass. We do find that the total stellar mass of diffuse light at large radii scales remarkably well with the cluster mass with a low scatter, comparable to the scaling relation of cluster gaseous mass within 150 kpc, and outperforms the cluster subhalo stellar mass throughout the 0 to 500 kpc radial range. This result is consistent with our observation that diffuse light has an excellent scaling relation with cluster mass.

Given our results, is diffuse ICL a good tracer of the galaxy cluster matter distribution (including dark matter)? Our answer is maybe.

Observationally, we find that the diffuse light radial profile shows some resemblance with that of cluster matter measured through weak lensing, but simulation analysis suggests that they are not tracing each other faithfully which needs to be confirmed with more studies. However, the diffuse light luminosity at large radius scales extraordinarily well with cluster total mass with a power-law like relation in both observation and simulation. We hence recommend developing the diffuse light observable as a potential low scatter mass indicator for cluster astrophysics and cosmology studies. Such mass proxies can be particularly useful for low-mass clusters where multiwavelength data are scarce and accurate cluster mass estimation is challenging (e.g. see discussion in DES Collaboration 2020), but existing wide-field optical survey programs like DES offer deep enough data to acquire accurate measurements of diffuse light.

Moving forward, these interesting findings can enjoy a better understanding with higher S/N measurements. The next generation of wide-field survey programs such as the Legacy Survey of Space and Time³ (LSST) based at the Vera Rubin Observatory and the *Euclid* Wide Survey⁴ provide great opportunities to further investigate the properties of cluster diffuse light. Moreover, we have not explored the effect of cluster relaxation process on diffuse light production, or studied the correlation between cluster morphological parameters (smoothness, cuspsiness, asymmetry, and concentration) and diffuse light. Meanwhile, simulation studies still need to explain the origin of diffuse light and present evidence that matches diffuse light properties in observations. We advocate that continuing to study diffuse light with both observations and simulations will have much to contribute to understanding galaxy and galaxy cluster evolution.

ACKNOWLEDGEMENTS

We thank Amanda Pagul, Joe Mohr, and Chihway Chang for helpful discussions. Funding for the DES Projects has been provided by the U.S. Department of Energy, the U.S. National Science Foundation, the Ministry of Science and Education of Spain, the Science and Technology Facilities Council of the United Kingdom, the Higher Education Funding Council for England, the National Center for Supercomputing Applications at the University of Illinois at Urbana-Champaign, the Kavli Institute of Cosmological Physics at the University of Chicago, the Center for Cosmology and Astro-Particle Physics at the Ohio State University, the Mitchell Institute for Fundamental Physics and Astronomy at Texas A&M University, Financiadora de Estudos e Projetos, Fundação Carlos Chagas Filho de Amparo à Pesquisa do Estado do Rio de Janeiro, Conselho Nacional de Desenvolvimento Científico e Tecnológico and the Ministério da Ciência, Tecnologia e Inovação, the Deutsche

³<https://www.lsst.org>

⁴<https://www.euclid-ec.org>

Forschungsgemeinschaft and the Collaborating Institutions in the Dark Energy Survey.

The Collaborating Institutions are Argonne National Laboratory, the University of California at Santa Cruz, the University of Cambridge, Centro de Investigaciones Energéticas, Medioambientales y Tecnológicas-Madrid, the University of Chicago, University College London, the DES-Brazil Consortium, the University of Edinburgh, the Eidgenössische Technische Hochschule (ETH) Zürich, Fermi National Accelerator Laboratory, the University of Illinois at Urbana-Champaign, the Institut de Ciències de l'Espai (IEEC/CSIC), the Institut de Física d'Altes Energies, Lawrence Berkeley National Laboratory, the Ludwig-Maximilians Universität München and the associated Excellence Cluster Universe, the University of Michigan, the National Optical Astronomy Observatory, the University of Nottingham, The Ohio State University, the University of Pennsylvania, the University of Portsmouth, SLAC National Accelerator Laboratory, Stanford University, the University of Sussex, Texas A&M University, and the OzDES Membership Consortium.

Based in part on observations at Cerro Tololo Inter-American Observatory, National Optical Astronomy Observatory, which is operated by the Association of Universities for Research in Astronomy (AURA) under a cooperative agreement with the National Science Foundation.

The DES data management system is supported by the National Science Foundation under Grant Numbers AST-1138766 and AST-1536171. The DES participants from Spanish institutions are partially supported by MINECO under grants AYA2015-71825, ESP2015-66861, FPA2015-68048, SEV-2016-0588, SEV-2016-0597, and MDM-2015-0509, some of which include ERDF funds from the European Union. IFAE is partially funded by the CERCA program of the Generalitat de Catalunya. Research leading to these results has received funding from the European Research Council under the European Union's Seventh Framework Program (FP7/2007-2013) including ERC grant agreements 240672, 291329, and 306478. We acknowledge support from the Brazilian Instituto Nacional de Ciência e Tecnologia (INCT) e-Universe (CNPq grant 465376/2014-2).

This manuscript has been authored by Fermi Research Alliance, LLC under Contract No. DE-AC02-07CH11359 with the U.S. Department of Energy, Office of Science, Office of High Energy Physics.

DATA AVAILABILITY

The data underlying this article will be shared on reasonable request to the corresponding author.

REFERENCES

- Abbott T. M. C. et al., 2018, *ApJS*, 239, 18
 Alonso Asensio I., Dalla Vecchia C., Bahé Y. M., Barnes D. J., Kay S. T., 2020, *MNRAS*, 494, 1859
 Anbajagane D., Evrard A. E., Farahi A., Barnes D. J., Dolag K., McCarthy I. G., Nelson D., Pillepich A., 2020, *MNRAS*, 495, 686
 Behroozi P. S., Wechsler R. H., Conroy C., 2013, *ApJ*, 770, 57
 Bernstein G., Nichol R., Tyson J. et al., 1995, *AJ*, 110, 1507
 Bernstein G., Abbott T., Desai S. et al., 2017, *PASP*, 129, 114502
 Bertin E., 2010, SWarp: Resampling and Co-adding FITS Images Together, record ascl:1010.068
 Budzynski J. M., Kopusov S. E., McCarthy I. G., McGee S. L., Belokurov V., 2012, *MNRAS*, 423, 104
 Cañas R., Lagos C. d. P., Elahi P. J., Power C., Welker C., Dubois Y., Pichon C., 2020, *MNRAS*, 494, 4314

- Dark Energy Survey Collaboration, 2016, *MNRAS*, 460, 1270
 DeMaio T. et al., 2020, *MNRAS*, 491, 3751
 DES Collaboration, 2020, *Phys. Rev. D*, 102, 023509
 De Vicente J., Sánchez E., Sevilla-Noarbe I., 2016, *MNRAS*, 459, 3078
 Drlica-Wagner A. et al., 2018, *ApJS*, 235, 33
 Eckert K. et al., 2020, *MNRAS*, 497, 2529
 Farahi A. et al., 2019, *MNRAS*, 490, 3341
 Feldmeier J. J., Ciardullo R., Jacoby G. H., Durrell P. R., 2004, *ApJ*, 615, 196
 Feldmeier J. J., Mihos J. C., Morrison H. L., Harding P., Kaib N., 2003, preprint ([astro-ph/0303340](https://arxiv.org/abs/astro-ph/0303340))
 Flaugher B. et al., 2015, *AJ*, 150, 150
 Gao L., White S. D. M., Jenkins A., Stoehr F., Springel V., 2004, *MNRAS*, 355, 819
 Gonzalez A. H., Zabludoff A. I., Zaritsky D., Dalcanton J. J., 2000, *ApJ*, 536, 561
 Gonzalez A. H., Zaritsky D., Zabludoff A. I., 2007, *ApJ*, 666, 147
 Hollowood D. L. et al., 2019, *ApJS*, 244, 22
 Huang S. et al., 2018a, *PASJ*, 70, S6
 Huang S. et al., 2018b, *MNRAS*, 480, 521
 Ivezić Ž. et al., 2019, *ApJ*, 873, 111
 Kaiser N., 1986, *MNRAS*, 222, 323
 Kluge M. et al., 2020, *ApJS*, 247, 43
 Kravtsov A. V., Vikhlinin A., Nagai D., 2006, *ApJ*, 650, 128
 Krick J. E., Bernstein R. A., 2007, *AJ*, 134, 466
 Lin Y.-T., Mohr J. J., 2004, *ApJ*, 617, 879
 Lupton R. H., Gunn J. E., Szalay A. S., 1999, *AJ*, 118, 1406
 Mandelbaum R., Slosar A., Baldauf T., Seljak U., Hirata C. M., Nakajima R., Reyes R., Smith R. E., 2013, *MNRAS*, 432, 1544
 Marinacci F. et al., 2018, *MNRAS*, 480, 5113
 McClintock T. et al., 2019, *MNRAS*, 482, 1352
 Montes M., Trujillo I., 2018, *MNRAS*, 474, 917
 Montes M., Trujillo I., 2019, *MNRAS*, 482, 2838
 Naiman J. P. et al., 2018, *MNRAS*, 477, 1206
 Navarro J. F., Frenk C. S., White S. D. M., 1997, *ApJ*, 490, 493
 Nelson D. et al., 2018, *MNRAS*, 475, 624
 Nelson D. et al., 2019, *Comput. Astrophys. Cosmol.*, 6, 2
 Oser L., Ostriker J. P., Naab T., Johansson P. H., Burkert A., 2010, *ApJ*, 725, 2312
 Palmese A. et al., 2020, *MNRAS*, 493, 4591
 Pillepich A. et al., 2014, *MNRAS*, 444, 237
 Pillepich A. et al., 2018, *MNRAS*, 475, 648
 Rozo E., Rykoff E. S., 2014, *ApJ*, 783, 80
 Rykoff E. S. et al., 2014, *ApJ*, 785, 104
 Sheldon E. S., Huff E. M., 2017, *ApJ*, 841, 24
 Sheldon E. S. et al., 2004, *AJ*, 127, 2544
 Springel V. et al., 2018, *MNRAS*, 475, 676
 Steinhaus H., 1956, *Bull. Acad. Polon. Sci.*, 1, 801
 Uson J. M., Boughn S. P., Kuhn J. R., 1991, *ApJ*, 369, 46
 van der Burg R. F. J., Hoekstra H., Muzzin A., Sifón C., Balogh M. L., McGee S. L., 2015, *A&A*, 577, A19
 van Dokkum P. G. et al., 2010, *ApJ*, 709, 1018
 Voit G. M., 2005, *Rev. Mod. Phys.*, 77, 207
 Zhang Y. et al., 2019a, *MNRAS*, 487, 2578
 Zhang Y. et al., 2019b, *ApJ*, 874, 165 (Z19)
 Zibetti S., White S. D. M., Schneider D. P., Brinkmann J., 2005, *MNRAS*, 358, 949 (Z05)
 Zuntz J. et al., 2018, *MNRAS*, 481, 1149
 Zwicky F., 1951, *PASP*, 63, 61

¹Observatório Nacional, Rua Gal. José Cristino 77, Rio de Janeiro RJ - 20921-400, Brazil

²Laboratório Interinstitucional de e-Astronomia - LIneA, Rua Gal. José Cristino 77, Rio de Janeiro RJ - 20921-400, Brazil

³Fermi National Accelerator Laboratory, P. O. Box 500, Batavia, IL 60510, USA

⁴Department of Physics and Astronomy, University of Pennsylvania, Philadelphia, PA 19104, USA

⁵Department of Astronomy, Shanghai Jiao Tong University, Shanghai 200240, China

⁶Department of Astronomy, University of Michigan, Ann Arbor, MI 48109, USA

⁷Astrophysics and Cosmology Research Unit, School of Mathematics, Statistics and Computer Science, University of KwaZulu-Natal, Westville Campus, Private Bag X54001, Durban 4000, South Africa

⁸Center for Cosmology and Astro-Particle Physics, The Ohio State University, Columbus, OH 43210, USA

⁹Institut de Física d'Altes Energies (IFAE), The Barcelona Institute of Science and Technology, Campus UAB, E-08193 Bellaterra (Barcelona) Spain

¹⁰Department of Physics, Stanford University, 382 Via Pueblo Mall, Stanford, CA 94305, USA

¹¹Kavli Institute for Particle Astrophysics and Cosmology, P. O. Box 2450, Stanford University, Stanford, CA 94305, USA

¹²SLAC National Accelerator Laboratory, Menlo Park, CA 94025, USA

¹³Max Planck Institute for Extraterrestrial Physics, Giessenbachstrasse, D-85748 Garching, Germany

¹⁴Universitäts-Sternwarte, Fakultät für Physik, Ludwig-Maximilians Universität München, Scheinerstr. 1, D-81679 München, Germany

¹⁵McWilliams Center for Cosmology, Department of Physics, Carnegie Mellon University, Pittsburgh, PA 15312, USA

¹⁶Centro de Investigaciones Energéticas, Medioambientales y Tecnológicas (CIEMAT), E-28040 Madrid, Spain

¹⁷Institute for Astronomy, University of Edinburgh, Edinburgh EH9 3HJ, UK

¹⁸Cerro Tololo Inter-American Observatory, National Optical Astronomy Observatory, Casilla 603, La Serena, Chile

¹⁹Departamento de Física Matemática, Instituto de Física, Universidade de São Paulo, CP 66318, São Paulo, SP 05314-970, Brazil

²⁰Instituto de Física Teórica UAM/CSIC, Universidad Autónoma de Madrid, E-28049 Madrid, Spain

²¹CNRS UMR 7095, Institut d'Astrophysique de Paris, F-75014 Paris, France

²²Sorbonne Universités, UPMC Univ Paris 06, UMR 7095, Institut d'Astrophysique de Paris, F-75014 Paris, France

²³Department of Physics and Astronomy, University College London, Gower Street, London WC1E 6BT, UK

²⁴Department of Astronomy, University of Illinois at Urbana-Champaign, 1002 W. Green Street, Urbana, IL 61801, USA

²⁵National Center for Supercomputing Applications, 1205 West Clark St., Urbana, IL 61801, USA

²⁶Department of Astronomy and Astrophysics, University of Chicago, Chicago, IL 60637, USA

²⁷Kavli Institute for Cosmological Physics, University of Chicago, Chicago, IL 60637, USA

²⁸INAF-Osservatorio Astronomico di Trieste, via G. B. Tiepolo 11, I-34143 Trieste, Italy

²⁹Institute for Fundamental Physics of the Universe, Via Beirut 2, I-34014 Trieste, Italy

³⁰Santa Cruz Institute for Particle Physics, Santa Cruz, CA 95064, USA

³¹Department of Physics, University of Michigan, Ann Arbor, MI 48109, USA

³²Institut d'Estudis Espacials de Catalunya (IEEC), E-08034 Barcelona, Spain

³³Institute of Space Sciences (ICE, CSIC), Campus UAB, Carrer de Can Magrans, s/n, E-08193 Barcelona, Spain

³⁴School of Mathematics and Physics, University of Queensland, Brisbane, QLD 4072, Australia

³⁵Department of Physics, The Ohio State University, Columbus, OH 43210, USA

³⁶Center for Astrophysics | Harvard & Smithsonian, 60 Garden Street, Cambridge, MA 02138, USA

³⁷Australian Astronomical Optics, Macquarie University, North Ryde, NSW 2113, Australia

³⁸Lowell Observatory, 1400 Mars Hill Rd, Flagstaff, AZ 86001, USA

³⁹George P. and Cynthia Woods Mitchell Institute for Fundamental Physics and Astronomy, and Department of Physics and Astronomy, Texas A&M University, College Station, TX 77843, USA

⁴⁰Institució Catalana de Recerca i Estudis Avançats, E-08010 Barcelona, Spain

⁴¹Institute of Astronomy, University of Cambridge, Madingley Road, Cambridge CB3 0HA, UK

⁴²Department of Astrophysical Sciences, Princeton University, Peyton Hall, Princeton, NJ 08544, USA

⁴³Instituto de Física, UFRGS, Caixa Postal 15051, Porto Alegre RS - 91501-970, Brazil

⁴⁴School of Physics and Astronomy, University of Southampton, Southampton SO17 1BJ, UK

⁴⁵Computer Science and Mathematics Division, Oak Ridge National Laboratory, Oak Ridge, TN 37831, USA

This paper has been typeset from a \TeX/L\AA\TeX file prepared by the author.