

Imperfect Rationality and Inflationary Inertia: A New Estimation of the Phillips Curve For Brazil

Angelo Marsiglia Fasolo Research Department (DEPEP), Banco Central do Brasil
Marcelo Savino Portugal Professor of Economics at Federal University of Rio Grande
do Sul (UFRGS) and associate researcher of CNPq

RESUMO

O artigo estima uma nova relação entre emprego e inflação para o Brasil, tendo como pano de fundo hipóteses novo-keynesianas. Quatro hipóteses são testadas e sustentadas: i) os agentes não possuem racionalidade perfeita; ii) a imperfeição na formação das expectativas pode ser determinante no componente inercial da inflação brasileira; iii) a inflação possui componente inercial autônomo; e, iv) relações não-lineares entre inflação e desemprego fornecem melhores resultados para a economia nos últimos 12 anos. Enquanto as duas primeiras hipóteses são verificadas por meio de modelo com mudanças markovianas, as últimas são testadas por uma Curva de Phillips convexa, estimadas pelo Filtro de Kalman. O uso destas estimativas não prejudica as propriedades tradicionais estimadas de funções de resposta da política monetária para o Brasil.

PALAVRAS-CHAVE

curva de Phillips, expectativas, inflação, hiato do desemprego, modelos markovianos, filtro de Kalman, SUR

ABSTRACT

This paper presents some new estimates for the relationship between inflation and unemployment in Brazil based on a new Keynesian hypothesis about the behavior of the economy. Four main hypotheses are tested and sustained throughout the study: i) agents do not have perfect rationality; ii) the imperfection in the agents expectations generating process may be an important factor in explaining the high persistence (inertia) of Brazilian inflation; iii) inflation does have an autonomous inertial component, without linkage to shocks in individual markets; iv) a non-linear relationship between inflation and unemployment is able to provide better explanations for the inflation-unemployment relationship in the Brazilian economy in the last 12 years. While the first two hypotheses are tested using a Markov Switching based model of regime changes, the remaining two are tested in a context of a convex Phillips Curve estimated using the Kalman filter. Despite the methodological and estimation improvements provided in the paper, the impulse-response functions for the monetary policy presented the same properties shown in the literature that uses Brazilian data.

KEY WORDS

Phillips curve, expectations, inflation, NAIRU-gap, Markov switching models, Kalman filter, SUR

JEL Classification

E310

INTRODUCTION

The relationship between aggregate demand and inflation has been the object of extensive research and discussion in economics. Since the seminal work of Phillips (1958), several formulations have attempted to establish a relationship between the oscillations in price and employment levels, by using a consolidated economic theory consistent with the microfoundations. A consensus seemed to be emerging with the “New Keynesian Phillips Curve”, referred to by McCallum (1997) as “*the closest thing there is to a standard formulation.*” Although discussions date back to the mid-90s, the “New Keynesian Phillips Curve” originates from Taylor (1980) models. More than conveniently, staggered contracts also contribute to the New Keynesian theory construction, as their existence does not allow rejecting the optimization hypothesis for the individual behavior of agents.¹

Nonetheless, some questions are raised about the consistency of such a theory. Roberts (1997), especially, argues that the Phillips Curve, generated by the sticky-inflation model and rational expectations, exhibits lesser data adjustment than a sticky-price model, due to the supposedly imperfect rationality of the agents as to their expectations formation. Therefore, the issue now is whether there is inflation inertia in function of the contracted values or whether, in fact, it is the price level that shows persistence as a result of imperfect expectations. Another aspect that should not be overlooked is the relationship with supply shocks. Some authors, especially Ball and Mankiw (1995), are not satisfied with the microfoundation of supply shocks and their spread in aggregate price levels led to formulations and tests with quite peculiar control variables, in which higher-order statistical moments of price level components were associated with the menu cost theory.

This article gives an estimate of the Phillips Curve for Brazil based on the notion of expectations with imperfect rationality. For this purpose, a measure of inflation expectations is derived from interest rates, and the properties of inflation are then assessed. Based on the latter, we analyze the interaction

1 Another study that supported the New Keynesian framework was that of CALVO (1983). His hypotheses formalized econometric tests for the speed of price adjustments in firms. However, his greatest contribution might have been to alternatively support a set of hypotheses that produce equivalence with TAYLOR (1980) model.

between inflation and expectations through Markov models and the estimation of the Phillips Curve then includes New Keynesian issues. Finally, monetary policy reaction functions are estimated by a system of equations whose core is the estimated relationship between inflation and unemployment. In section 1, the literature is reviewed, with a brief discussion on how to extract expectations from the agents; afterwards, results follow, as well as the methodology of other studies. Section 2 describes the theory of current formulations for the Phillips Curve, focusing on empirical inconsistencies, as well as on the econometric procedure adopted. Section 3 develops the proposed topics, while last section concludes.

1. INFLATION EXPECTATIONS AND THE PHILLIPS CURVE

This section presents empirical results regarding the analysis of expectations, their measure and their narrow and quite recently investigated relationship with the Phillips Curve. After this relationship is established, some results obtained as to the dynamics between inflation and unemployment are presented, with special emphasis on the econometric method used and the measure of the adopted expectation.

1.1 *Composition and Analysis of Expectations*

The most common procedures for the extraction of inflation expectations are three: direct surveys, arbitrage of stochastic processes and use of interest rates negotiated in the market. The surveys are organized with the aim of capturing the perception of agents as to the expected inflation rate. An obvious criticism is the reliability of the data. In theory, the interviewees are not encouraged to strictly tell the truth, hampering the final result. In the United States, the three most widely used surveys are: the *Livingston Survey of Economists*, with the participation of fifty five economists, organized by Philadelphia's FED; the University of Michigan survey, which analyzes the attitudes of sampled families (around five hundred, today); also organized by Philadelphia's FED, the *Survey of Professional Forecasters* interviews researchers from organizations in charge of the estimation of expected inflation rates. In Europe, the European Commission conducts a qualitative survey,

while, in England, one is conducted by the Gallup Organization with over one thousand employees.²

The estimation of stochastic processes for inflation takes for granted that agents bear an “econometric model” in mind, opening up a world of infinite possibilities, such as univariate or multivariate models, long or short lags, etc (see BALL, 2000). For Brazil, there is a problem with the determination of the behavior of agents due to structural breaks. The most common arbitrage strategies when estimating Phillips Curves use past inflation as proxy for inflation expectations. As Ball (2000) interestingly puts it, quoting Sargent (1999), agents do not know *a priori* about inflation behavior; instead, they go through a constant learning process, implying the necessity of models that mimic human learning skills. In some way, this is the procedure adopted when working with artificial neural networks.³

Bonds traded on financial markets are largely used to measure inflation expectations. Apparently, this method has fewer limitations and may be used without further hypotheses about the behavior of agents.⁴ The use of the term structure is justified by Fisher’s identity, where the nominal rate on a bond corresponds to the real rate plus the expected inflation rate at the end of the bond’s term. Nevertheless, its use involves some important assumptions: i) functioning of the Expectations Hypothesis;⁵ ii) nonexistence of monetary policy shifts during the maturity of the considered bonds; iii) same default risk component and liquidity, regardless of maturity dates, in bonds of the same country.

Thus, consider a pre-fixed interest rate bond for the first working day of month t and a post-fixed interest rate one for the last working day of t , both with the same maturity. For the pre-fixed interest rate bond, Fisher’s identity proposes that:

2 In Brazil, the Central Bank has started conducting a survey in April 1999. Therefore, the sample size is not sufficient for reliable inferences. The data are collected from financial institutions.

3 About the use of models that presume limited rationality of the agents, see the classic work of SARGENT (1993.)

4 In the empirical section, developed in section 3, the measure of expectation is based on this method.

5 For Brazil, the Expectations Hypothesis is rejected in long-term bonds, but not rejected in the case of short-term bonds. See TABAK and ANDRADE (2001).

$$i_t^{pre} = (1 + r_t) * (1 + \pi_t^e) \quad (1)$$

The post-fixed interest rate bond can be decomposed in the expectations about monetary policy (real interest rates) plus the correction of an inflation rate:

$$i_t^{post} = (1 + E(r_t)) * (1 + \pi_t) \quad (2)$$

Supposing that the monetary policy does not change along the maturity term ($E(r_t) = r_t$), we have:

$$\frac{i_t^{post}}{i_t^{pre}} = \frac{(1 + E(r_t)) * (1 + \pi_t)}{(1 + r_t) * (1 + \pi_t^e)} - 1 \approx \pi_t - \pi_t^e \quad (3)$$

In the analysis of the interaction between inflation and expectations, the literature points out the difference to what was expected by perfect rationality assumptions, consequence of the persistence of expectations. However, data contain more information about future inflation than the simple extrapolation of past values.⁶ Some justifications are based on assumptions about Markov processes for inflation, as in Dahl and Hansen (2001), or on the absence of credibility to the monetary authority, as stated by Ragan (1995) and Gagnon (1996).

1.2 The Applications of Phillips Curve

Perhaps the most practical result of the Phillips Curve estimation concerns the measure of the natural rate of unemployment, or the non-accelerating rate of unemployment (*NAIRU*, for linear curves). The validity of such a representation is still in discussion. The constant shifts of the curve in the 1970s raised questions about the relationship between inflation and unemployment. It made Staiger, Stock and Watson (2001) divide economists in two groups: “theories in which ‘the Phillips Curve is alive and well, but?... and those that proclaim that ‘the Phillips Curve is dead’.” (p. 2). As it will be shown, the statements made by the first group make more sense: the Curve is

6 See, for instance, RAGAN (1995), GAGNON (1996), ROBERTS (1997), BROUWER and ELLIS (1998).

well established as theoretical representation, although it should incorporate properties considered by modern macroeconomics.

Another important distinction is between two inexplicably exclusive objectives in the Curve's applications. Some authors⁷ are concerned with the estimation of the NAIRU itself, measuring the excess demand and laying aside assessments of the monetary policy. Other authors⁸ are only concerned with the theory of monetary policy, trying to verify the consistency of the Phillips Curve as theoretical construct, using different measures of activity in an attempt to check the empirical robustness of results.

Estimations of New Keynesian models are presented in Roberts (1995, 2001). The Phillips Curve is tested with different measures of expectations and economic activity. To the former, the author used the University of Michigan survey, the *Livingston Survey* and the observed future inflation. To the latter, he used unemployment, capacity utilization and detrended output. The estimation is made with instrumental variables, with oil price fluctuations and government spending as instruments, in addition to a dummy variable with unit value when the US president was a democrat one. The inclusion of additional inflation lags to correct specification problems raises some doubt on the perfect rationality assumption.

In an attempt to incorporate short-term NAIRU properties, some authors use techniques that can identify changes to the excess of demand over the time. Gordon (1996) estimates the traditional Phillips Curve, allowing NAIRU to follow a random walk. The estimated model is as follows:

$$\pi_t = a(L)\pi_t + b(L)(U_t - U^*) + c(L)z_t + u_t \quad (4)$$

$$U^*_t = U^*_{t-1} + \varepsilon_t,$$

7 In line with this group we have GORDON (1996), STAIGER, STOCK and WATSON (1996, 2001), DEBELLE and LAXTON (1997), PORTUGAL and MADALOZZO (2000), TEJADA and PORTUGAL (2001) and LIMA (2000).

8 See ROBERTS (1995, 1997, 2001), GALÍ and GERTLER (1999).

where U^*_t is the natural rate at instant t , z_t is a vector of control variables, U_t is the rate of unemployment and $x(L)$ is a lag polynomial. Note that if the variance of the second equation is equal to zero, the model converges to the traditional analysis, with a non-time-varying NAIRU, a hypothesis that is rejected in the present study. The estimation is made by way of Gaussian maximum likelihood (see HAMILTON, 1994). The measurements are stable in subsamples and have very narrow confidence intervals. The concavity hypothesis is rejected in favor of the linear formulation.

Gordon (1996) is a response to Staiger, Stock and Watson (1996), who presented high confidence intervals (the NAIRU for 1990 would oscillate between 5.16% and 7.24%). Their estimation used the random walk hypothesis for inflation, where expected inflation corresponds to the past one and did not allow the NAIRU to vary, which could be the source of inaccuracy. In spite of this, the authors make it clear that unemployment has considerable power to forecast the inflation rate.

The concavity of the curve is considered fundamental in Debelle and Laxton (1997). By using an expectation measure based on interest rates negotiated in each country and using estimations generated by Kalman filter, they reject the linear formulation for the US, Canada, and United Kingdom.

Gali and Gertler (1999) change the model to a combined form of expectations, criticizing the usual measures of activity, due to the inaccuracy in the determination of the equilibrium. A proxy for real marginal cost would be more valid for its correlation with economic activity and no implicit components that need to be estimated. The estimations use the Generalized Moments Method, instruments being the labor income share, deviation of output from trend and spread of short and long-term interests rates. The parameters are decomposed to obtain the structure in Calvo (1983), but the exercise was sensitive to the instruments. The results point to the enhanced importance of rational expectations. However, the weight of adaptive formation should not be neglected in function of the accuracy of the estimation.

Staiger, Stock and Watson (2001) conducted a new study, with time-varying intercept estimated by the Kalman Filter, in an attempt to estimate NAIRU

changes. The model is the same as in Gordon (1996), but it is the constant that varies, not the measure of economic activity. The results accept the validity of the Curve. Yet, it is stressed that movements of wages, prices and unemployment should focus on understanding the univariate trends, because of the instability of parameters over time.

For Brazil, three studies are of note due to their econometric methodology. Portugal and Madalozzo (2000) use two processes for calculating the NAIRU. The first one is based on the transfer from a Phillips Curve. Assuming that, in periods of high inflation, mistakes are highly costly, the authors use an ARIMA model forecasting as expectations. The second method is the estimation of structural components of unemployment. The main idea is to eliminate short-term determinants, having the remaining forecast as measure of the NAIRU. The authors reject this methodology, since it did not allow the existence of a residual for economic activity that explains the dynamics of inflation.

Tejada and Portugal (2001), through a time-varying parameter model, allow the convexity of the curve, similarly to Debelle and Laxton (1997). The estimations seem to be more consistent than those in Portugal and Madalozzo (2000), since they allow lower variance of the NAIRU over time, which seems to be consistent with the notions of structural unemployment.

Lima (2000) is, technically, the most complex study. The sophistication is justified by the instability of Brazil's economy in the last years. Two models are estimated: one uses ARCH residuals in the mean equation and the other adds Markov switching to the variance. The author takes past inflation as expectation, using the variation of inflation rate as an endogenous variable. Notably, even using advanced procedures, the statistics on forecast errors and the confidence intervals do not yield satisfactory results.

2. THE PHILLIPS CURVE THEORY AND ECONOMETRIC METHODOLOGY

The modern version of the Phillips Curve combines the foundation of individual behavior and the relationships between the economic aggregates into the same theoretical framework, attempting to justify the presence of nominal price rigidity and inflation inertia in the agents' choices. Assuming models based on staggered contracts (TAYLOR, 1980), where contracts become the origin of short-term price rigidity, we derive the Phillips Curve based on Roberts (1997).⁹ Afterwards, we show the compatibility of the sticky inflation model with rational expectations (FUHRER and MOORE, 1995), with the sticky price model, in addition to the relaxation of the expectations hypothesis, as proposed by Roberts (1997).

Taylor (1980) assumes two-period contracts. Then, the mean wage paid by the firms is:

$$w_t = (x_t + x_{t-1})/2 \quad (5)$$

where x_t is the contract wage chosen in t for periods t and $t+1$. Considering that workers are concerned with a measure of demand (e.g. unemployment, U_t) and that p_t is the price level at t , we have as job offer (k is a constant):

$$x_t - \frac{(p_t + p_{t+1}^e)}{2} = k - \alpha U_t + \varepsilon_t \quad (6)$$

Assuming firms in monopolistic competition, a normalized wage markup to zero is supposed ($p_t = w_t$). Combining this with (5) and (6) and defining $\pi_t = p_t - p_{t-1}$, inflation rate at t is:

$$\pi_t - \pi_{t+1}^e = 4k - 2\alpha(U_t + U_{t-1}) + 2(\varepsilon_t + \varepsilon_{t-1}) - \text{Error}(t) \quad (7)$$

⁹ It is possible to prove that the model developed by CALVO (1983) produces the same set of equations as a result. For demonstrations, see WALSH (2000, pages 218-220).

where $Error(t) = \pi_t - \pi_t^e$ defines an expectation error for the current inflation.¹⁰ Except for $Error(t)$, this is the Curve equivalent to the traditional formulation. Hereinafter, $Error(t)$ will be defined as *ex-post bias*, as in Dahl and Hansen (2001), to distinguish it from statistical forecast error. The ex-post bias reflects the attributed probability to the regime switch of inflation between $t-1$ and t , assuming that it follows a Markov process. For the authors, the agents know the current regime only during the transition period. Therefore, attributing a probability other than zero for regime switch causes a bias in expectations.

Fuhrer and Moore (1995) change equation (6), by supposing that workers do not perceive the real wage levels, but the variations of real wages obtained in the previous period. The equation, with k_t as a constant, becomes,

$$(x_t - p_t) = \frac{(x_{t-1} - p_{t-1}) + (x_{t+1} - p_{t+1})^e}{2} + k' - \alpha' U_t + \varepsilon_t \quad (8)$$

Note that real wage is the mean between real wages in the previous period and the expectations for the end of the contract, adjusted according to the economic activity. Therefore, the authors rewrite (8) as:

$$\Delta x_t - \frac{(\pi_t + \pi_{t+1}^e)}{2} = k' - \alpha' U_t + \varepsilon_t \quad (9)$$

where $\Delta x_t = x_t - x_{t-1}$. Considering the price markup and combining equations (8) with (5):

$$\Delta \pi_t - \Delta \pi_{t+1}^e = 4k' - 2\alpha'(U_t + U_{t-1}) + 2(\varepsilon_t + \varepsilon_{t-1}) - Error(t) \quad (10)$$

which is the same equation (7) above, but with variation of inflation and expectations as endogenous variable. Roberts (1997) rewrites equation (10) as follows:

10 Apparently, the error would be in the price level. However, by adding and subtracting the price level at t , we obtain the rate of inflation subtracted from the expected rate – hence, the forecast error.

$$\pi_t - \frac{(\pi_{t-1} + \pi_{t+1}^e)}{2} = \frac{k'}{2} - \alpha' \frac{(U_t + U_{t-1})}{2} + (\varepsilon_t + \varepsilon_{t-1}) - \frac{\text{Error}(t)}{2} \quad (11)$$

The left-hand side is modified to provide an error in inflation forecast, so that part of the equation consists of rational expectations and the remaining of past extrapolation. Thus, Fuhrer and Moore (1995) include in their model both the sticky inflation, with rational expectations, and the sticky price formulation, with agents of different expectation formations. Interestingly, the endogenous variable in (11) does not express a “forecast error”, as Roberts (1997) suggests. Its best definition may be the difference between inflation and state of expectations, as “average expectation” is actually formed by past values and the future expectation. Even considering agents with different expectation formations, nothing assures the same proportion. The sense ascribed by the author may be more appropriate as ex-post bias.

Despite the consensus, some topics are unclear in empirical investigation and in theory implied by the Phillips Curve. Two aspects criticized are inflation inertia and the economy’s behavior in disinflation. According to Fuhrer and Moore (1995), the inertia in Taylor (1980) is restricted to the adjustment period of output to equilibrium, which is lower than verified.¹¹ Ball (1994, 1995) shows the chance of economic growth as result of credible deflations. The issue relates to the adjustment of expectations: if they have the necessary speed, excess demand does not influence the prices. Mankiw and Reis (2001) cite the “flexibility of expectations” to justify their result. Galí and Gertler (1999) show that the model assumes positive correlation between the variation of contemporaneous inflation and the output gap in the future. However, empirical data show an inverse pattern.

Fuhrer and Moore (1995) is one of the variations that tries to correct original problems. Others (ROBERTS, 1997 and 1998, BALL, 2000) make inferences about expectations, in line with Bonomo, Carrasco and Moreira (2000), which include notions of evolutionary games. In cases of disinflations, regardless of credibility, agents choose between adjusting prices and ke-

¹¹ ERCEG and LEVIN (2001) cite studies where inflation persistence coincides with unstable policies. GORDON (1996) concludes that the American inflation is “dominated” by inertia. CATI, GARCIA and PERRON (1995) find a random walk of the Brazilian inflation in the period that preceded the Real Plan.

eping the old strategy. Occasional “myopia” causes losses proportional to the length of the adaptive strategy. Mankiw and Reis (2001) justify “myopia” by the amount of information the agents receive, since there are costs for obtaining them to improve estimation of future inflation. Carroll (2001) questions this model, as most agents obtain information at low cost from newspapers. He develops a model based on epidemiological studies, where the sluggish adjustment of expectations is justified by the exposure to the news. For Brazil, Almeida, Moreira and Pinheiro (2002) replicate Roberts (1997) with a sample from 1990 to 1999, finding evidence in favor of Fuhrer and Moore (1995). One could criticize their sample, since the two-stage estimator (2SLS) has only asymptotic consistency. Besides, there is no inference about expectations at all, imposing the future value as the agents’ expectations.

2.1 Asymmetry of Prices and Supply Shocks:

Controlling exogenous supply shocks is left as a complement imposed by the researcher. The classical approach uses a set of relatively inelastic supply products. After choosing the set, two options are available: to remove the products from the price index (forming a “core”), or to include the variations as explanation for the model. Criticisms about the use of disaggregated indices lie in the incapacity to eliminate the spread of shock from a sector to the whole economy. Adding lags to the equation avoids this problem. Examples of series used are changes in oil price, imported goods’ price (see GORDON, 1996) and changes in the price of some types of foods (see STAIGER *et alii*, 1996 and MIO, 2001).

The classical control is still criticized since it assumes that few sectors have sharp variations in their price level. On the other hand, the use of series that contain most of price index components forms quite a narrow core of variation. Thus, Ball and Mankiw (1995) suggest the use of higher statistical moments of cross-sectional inflation distribution. Asymmetry is justified in models where firms with menu costs only update their prices contemporaneously to the shocks if their increase in income is higher than the costs. They confirm the presence of enhanced asymmetry component in the US

inflation, with loss of significance of the basket of products when the asymmetry and kurtosis variables are added.

Mio (2001) uses the asymmetry of Japanese data and confirms the hypothesis above about the efficiency of this control. The author relates inflation inertia to the asymmetry of the distribution, affirming that the persistent price fluctuations are only due to the spread of shocks on economic sectors, without an “autonomous” inertial component. If the shocks are fully responsible for inflation inertia, their spread corresponds to the remaining asymmetries. The author’s measure of asymmetry has interesting properties, as it consists of the difference between the headline and the trimmed inflation:

$$SKEW_t = \pi_t - \pi_t^{30\%} = \sum_{i=1}^N \omega_{it} \pi_{it} - \frac{\sum_{j=1}^M \omega_{jt} \pi_{jt}}{\sum_{j=1}^M \omega_{jt}} \quad (12)$$

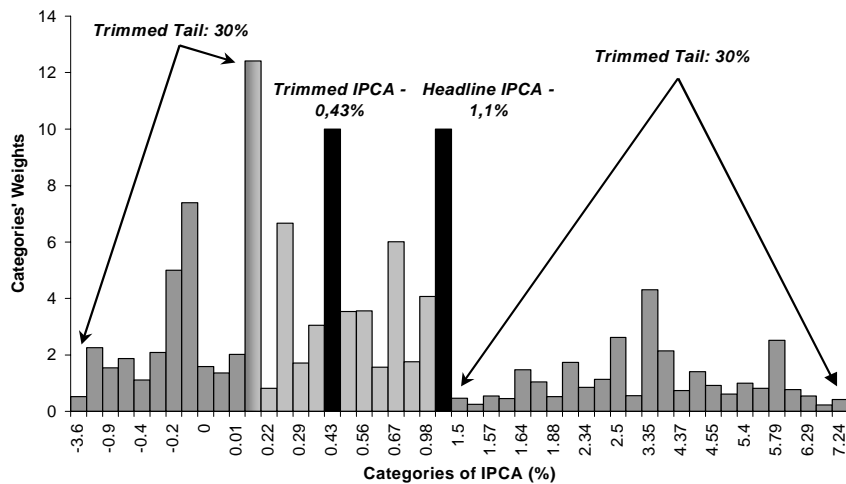
where $\pi_t^{30\%}$ is the inflation rate trimmed at 30% on each tail, ω_{it} is the weight of item i in period t , N is the number of items that form the total price index and M is the number that remains after exclusion.¹² The result is the sum of the extreme components of the distribution, thus representing a measure of asymmetry. We observe two aspects regarding supply shocks captured by this measure: the measure of the shock itself (the more asymmetric the distribution, the more sectors will be in extreme situations), and shock persistence. It is also underscored that the variable strongly controls the components of IPCA (extended CPI) on a regular basis, such as seasonality. In fact, Ball and Mankiw (1995) and Mio (2001) use full-price indexes and do not control the regressions made with seasonal factors. The measures of elevated statistical moments accomplish this task.

Abrupt changes in relative prices, a special kind of supply shock, can be controlled by the *SKEW* variable. Figure A shows the distribution of 47 items of IPCA in March 1999. The black bars show the headline IPCA (1.1%) and the 30% trimmed mean (0.43%). The large difference between these two values is due to the distribution of the extreme price variations. It is

12 The choice of the mean with 40% of the core of IPCA is based on FIGUEIREDO (2001). The author points out that this cut tends to value the effects of asymmetry, which is the measure desired as control variable for Brazil.

worth noting that, in March 1999, Brazil experienced the worst moment of the currency crises started in January that year. The exchange rate devaluation had a more significant impact on prices of tradable goods, therefore introducing a large asymmetry in the inflation index.

FIGURE A - CROSS-SECTIONAL INFLATION DISTRIBUTION - MARCH 1999



2.2 Methodology and Test Equations:

Section 3 consists of three parts. In the first part, we assess the relationship between inflation and expectations by means of regime switching models. The second part estimates the New Keynesian Phillips Curve, using the Kalman filter. In the third part, the curve is the center of a system that allows for impulse-response functions. Before these parts, issues about the stationarity of data are evaluated by ADF and Phillips-Perron tests, in addition to the comparison of the results with other studies. The comparisons are necessary in view of the small sample available and the low power of tests adopted.

The rationality test improves the procedure of Bakhshi and Yates (1998) and Grant and Thomas (1999) which verifies whether, on average, the expected inflation is an unbiased and efficient estimation of the observed inflation, through a cointegration vector with the following format:

$$\pi_t = \alpha + \beta\pi_t^e + u_t \quad (13)$$

where π_t^e is the expected inflation for t with information of $t-1$ and u_t is a white noise. Rational expectations suppose that α and β should respectively value 0 and 1. Note that (13) can also be written as:

$$Error(t) = \pi_t - \pi_t^e = \alpha + u_t \quad (14)$$

supposing that β is equal to the unit. Thus, the ex-post bias can be viewed as a white noise with a constant, where α expresses the probability attributed to the regime switch between $t-1$ and t . This format is more interesting, once a stationary AR representation indicates the long-term behavior of the bias. The presence of rational expectations where the ex-post bias is systematized may seem contradictory, as the classic hypothesis characterizes it as a white noise with zero mean and constant variance. However, the AR estimation implies convergence to the mean of the process, plus a white noise. So, the bias in the present may be autocorrelated with the past, in some lags. However, in the long run, parameter α , discounted from short-term effects, represents the mean of the ex-post bias.

The ex-post bias equation with Markov switching assumes a single format, where the mean, the autoregressive terms and the variance of the process are liable to changes around three regimes:¹³

$$\begin{aligned} Error(t) &= \mu_{S_t} + \sum_{i=0}^k \theta_{i,S_t} Error(t-i) + u_{S_t} \\ \mu_{S_t} &= \mu_1 S_{1t} + \mu_2 S_{2t} + \mu_3 S_{3t} \\ \theta_{S_t} &= \theta_1 S_{1t} + \theta_2 S_{2t} + \theta_3 S_{3t} \\ S_{jt} &= 1 \Leftrightarrow S_t = j \\ S_{jt} &= 0, c.c. \\ j &= 1, 2, 3 \end{aligned} \quad (15)$$

$$\begin{pmatrix} u_{1t} \\ u_{2t} \\ u_{3t} \end{pmatrix} \sim N \left(0, \begin{bmatrix} \sigma_1^2 & 0 & 0 \\ 0 & \sigma_2^2 & 0 \\ 0 & 0 & \sigma_3^2 \end{bmatrix} \right)$$

13 Models with changes to only some components (mean or variance) were unsuccessfully tested. Probably, changes to the AR terms are the reason for rejection of alternatives due to the problem with residual autocorrelation.

The estimation of the Markov process allows the correction of discrepant events. The use of dummy variables for shocks is mostly a restricted activity since it is not possible to reach all the components of the model (e.g. the variance of the regression). The use of Markov models reduces the restriction, allowing the estimation of different components in different regimes. Another advantage is the tendency for more parsimony than its linear counterpart, as shown by Clemens and Krolzig (2001).

MS-VAR estimation includes discrete Markov chains separating different and unobservable M regimes. Consider the joint density of an Y_t series and of S_t and S_{t-1} regimes as the product of marginal and conditional densities of the processes:

$$f(Y_t, S_t, S_{t-1} | Y_{t-1}, S_{t-1}) = f(Y_t | S_t, Y_{t-1}, S_{t-1}) * f(S_t, S_{t-1} | Y_{t-1}, S_{t-1}) \quad (16)$$

Integrating the density functions for all possible current and past regimes, the likelihood function assumes the following format for the whole sample:

$$\ln L = \sum_{t=1}^T \ln \left\{ \sum_{S_t=0}^M \sum_{S_{t-1}=0}^M f(Y_t | S_t, S_{t-1}, Y_{t-1}) \Pr[S_t, S_{t-1} | Y_{t-1}, S_{t-1}] \right\} \quad (17)$$

According to Kim and Nelson (2000), the function is the mean of conditional densities, with transition probabilities as weights. For an AR(p) process, the transition probability of the regime is defined as conditional to the information set and the previous period regime. It distinguishes MS-VAR from other threshold models, where the threshold which determines whether the process is in a certain regime is constant in the sample. In the MS-VAR model, it changes as information set increases. Hence:

$$\Pr(S_t | \{S_{t-j}\}_{j=1}^{\infty}, \{Y_{t-j}\}_{j=1}^{\infty}) = \Pr(S_t | S_{t-1}, \beta) \quad (18)$$

For estimation of the joint probability of S_t and S_{t-1} , EM algorithm, used in Hamilton (1990) for unobservable regimes, is similar to the Kalman filter, and consists of two steps. In the *forecast*, the algorithm derives the transition probability given the set of information on the past:

$$\Pr[S_t = j, S_{t-1} = i | Y_{t-1}, S_{t-1}] = \Pr[S_t = j | S_{t-1} = i] \cdot \Pr[S_{t-1} = i | Y_{t-1}, S_{t-1}] \quad (19)$$

The first term on the right-hand side is the transition probability, whereas the second is the transition probability in the previous period. In *updating* process, the probabilities' forecast error is incorporated for future steps. So, the filter obtains two types of probability: the smoothed one, containing all information on the sample, and the filtered one, using the available information up to the time of estimation.

The estimation of the Phillips Curve is carried out according to Debelle and Laxton (1997), with a model based in equation (11). Developing (11) together with the control variables, we have:

$$\pi_t = \alpha \pi_t^e + \alpha * \pi_{t-1} + \frac{(\gamma^*_{t-1} NAIRU_{t-1} - \gamma u_t)}{u_t} + \beta_1 SKEW_{t-1} + \varepsilon_t \quad (20)$$

$$\pi_t = \alpha \pi_t^e + \alpha * \pi_{t-1} + \frac{(\gamma^*_{t-1} NAIRU_{t-1})}{u_t} - \frac{\gamma u_t}{u_t} + \beta_1 SKEW_{t-1} + \varepsilon_t \quad (21)$$

$$\pi_t = \alpha \pi_t^e + \alpha * \pi_{t-1} + (\gamma^*_{t-1} NAIRU_{t-1}) \cdot \frac{1}{u_t} - \gamma + \beta_1 SKEW_{t-1} + \varepsilon_t \quad (22)$$

Therefore, the constant represents the fixed γ parameter that weights the unobservable component γ^* . The variable used to measure economic activity is therefore the inverse of the unemployment, while the NAIRU is the result of the ratio between the negative of γ^* and γ . This equation's format assumes strict convexity in the inflation-unemployment plane.

The assignment of initial values to the filter requires some care, due to the need of convergence of the algorithm with the necessary flexibility to obtain better values. Here, the estimation by OLS is adopted as initial values. The method has good rate of convergence, even though the presence of regime switching may lead to the use of inappropriate values. The correction is made with the use of the first k observations only, where k corresponds to the number of parameters in the observation equation.¹⁴

14 The availability of data from 1990 onwards makes the initial variance increase due to Collor I Plan. Thus, the sample itself behaves like the use of a diffuse Bayesian prior for initial values.

The system estimated in the last part of section 3 uses Zellner's method, estimated by *Full-Information Maximum Likelihood* (FIML), for correction of the elevated correlation between the residuals of different equations. VAR estimation, which is traditional in the area, was abandoned because of this problem and of the use of a different set of variables in inflation equation.

3. A NEW KEYNESIAN PHILLIPS CURVE FOR BRAZIL

3.1 Preliminary Considerations: Stationarity

In Brazil, the analysis of stationarity is important in view of the presence of structural breaks in the economy and their influence on the behavior of variables. Thus, unit root tests should take into consideration its low power, in addition to information obtained from other articles in the field. The presence of a significant break in July 1994 (Real Plan) leads us to adopt the Phillips-Perron (PP) test, since the Dickey-Fuller (ADF) test has lower statistical power.¹⁵ The reduced power of the unit root tests also made us avoid their use in sample partitions, given the compromise of the assessed results, except when testing the unemployment rate.

Seven variables are used in the study: IPCA of IBGE, basic index for the inflation targeting system; the expectations derived from interest rates (*EXPEC*); the ex-post bias, formed by the difference between these two variables; the changes of primary rate (*DSELIC*); the measure of skewness proposed by Mio (2001), *SKEW*; the open seasonally adjusted unemployment rate, 30 days, of IBGE (*U30-Census*); and the growth rate of monetary stock M1 seasonally adjusted by Census-X11 (*MI-Census*).

We verify that, differently from Cati, Garcia and Perron (1995), the *IPCA* and *EXPEC* variables have unit roots in the ADF test. The response given

15 Alternative tests, as in CATI, GARCIA and PERRON (1995), were not performed as they were not the aim of this study. However, their conclusions, from other articles, are essential to characterize the dynamics of the variables. The main structural break, defined as important here, is derived from changes in the variance of the series. We must stress that structural changes in the mean of the series cause bias to both ADF and PP tests. However, the correction for heteroskedastic residuals is the main reason to adopt the PP test as the preferential result.

by the test is possibly a consequence of the small sample. Estimating the Phillips Curve, the absence of stationarity would cause damage if there were no cointegration between the variables. However, tests point to the existence of more than one cointegration vector.¹⁶ In case of the system of equations, consider the observation of Hamilton (1994) about systems with nonstationary series, where the use of series in difference would throw away long-term information of the data.¹⁷

TABLE A – UNIT ROOT TEST

	Phillips-Perron		Augmented Dickey-Fuller	
	Statistics	Lag	Statistics	Lag
IPCA	-4.509759*(t)	4	-2.666528 (t)	3
Δ IPCA	-11.94200*	4	-11.63112*	2
EXPEC	-4.289080* (t)	4	-2.691923 (t)	4
Δ EXPEC	-11.19376*	4	-8.588965*	3
Error	-14.0051* (t)	4	-4.3255*	13
U30-Census	-3.190934 (t)	4	-2.833521 (t)	11
Δ U30-Census	-12.45257*	4	-3.447476*	10
Skew	-12.37264* (t)	4	-3.267694 (t)	9
Δ Skew	-26.76453*	4	-9.241024*	8
SELIC	-4.541840* (t)	4	-2.806695 (t)	3
Δ SELIC	-10.29747*	4	-9.646973*	3
M1-Census	-12.20901* (t)	4	-2.782187 (t)	12
Δ M1-Census	-34.23335*	4	-3.531824*	11

Note: (*) indicates rejection of the null hypothesis at 1%. “Lag” indicates the number of lags used in the test statistics. (t) indicates the use of deterministic trend and intercept in the test equation.

Results in Table A leave no doubt about the ex-post bias, even though stationarity occurs around a trend according to the PP test. *SKEW*, *MI-Census* and *SELIC* variables have the same behavior as that of inflation and expecta-

¹⁶ Result available from authors.

¹⁷ About the use of systems in difference, the author states: “The drawback to this approach is that the true process may not be a VAR in differences. Some of the series may in fact have been stationary, or perhaps some linear combinations of the series are stationary, as in a cointegrated VAR. In such circumstances a VAR in differenced form is misspecified” (page 652).

tions. The ADF test accepts the unit root hypothesis, whereas the PP test points to stationarity. However, the variable for control of the monetary policy is the first difference of the SELIC rate. Hence, as *DSELIC* was stationary, we do not have problems with the estimation. In contrast, the PP test shows that there are high chances of stationarity of the *SKEW* variable and M1 growth. Moreover, the ADF test points to stationarity at 10% of the asymmetry. Thus, the hypotheses of stationarity for SELIC variations and for asymmetry are not a strong restriction to estimation. The evidence of Pastore (1995) regarding the cointegration between rate of inflation and money stock growth sets argument.

The test on unemployment does not reject the unit root hypothesis. This result is not usual in the empirical literature (see PORTUGAL and MADALOZZO, 2000), even when the *logit* transformation is applied to limited variables.¹⁸ Using partitions of the sample does not solve the problem, since ADF and PP tests still reject the stationarity hypothesis concerning the post-Real Plan period.¹⁹ Probably, this result represents small samples, since tests with significantly larger samples do not endorse the result.

3.2 Analysis of Expectations

The data on the “expected inflation” variable are available at the site of the Central Bank of Brazil. The observations consist of nominal yield of pre-fixed CDB (bank deposit certificate) and the post-fixed yield negotiated, respectively, on the first and on the last day of each month, for the number of working days in the month. Information covers the periods from January 1990 to August 2002. The data on the post-fixed CDB consist only of the real interest rate. Thus, the spread between the pre-fixed and post-fixed rates expresses the expected inflation rate. In equation (3), it is equivalent to the inverse of the difference, without the term $(1 + \pi_t)$.²⁰ The inflation used to form the ex-post bias is the IPCA, of IBGE.

18 For details about unemployment in Brazil and the data transformations used, see PORTUGAL and MADALOZZO (2000).

19 Two periods were tested: 1990:01 - 1994:06 and 1995:01 - 2002:08. The choice of the starting date for the second sample tries to avoid bias in the tests due to adjustment to a new regime. In the first sample, PP: -3,2250* and ADF: -1,9457 (test statistics to the series in levels). In the second sample, PP: -1,8046 and ADF: -1,5516. Thus, at least in the second sample, unit root hypothesis can not be rejected for de unemployment series.

This composition has implications for the events of each month. Therefore, we have: i) beginning of period t : agents have information about $t-1$; ii) agents form expectations about t from the available information; iii) information on t is made available; iv) the agents adapt to information; v) beginning of $t+1$. Note that the agents form their expectations within the same period. The assumptions are not very strong, given the lag between collection and dissemination of economic data.

The estimation of a cointegration vector that relates inflation and expectations, in line with Bakhshi and Yates (1998) and Grant and Thomas (1999), does not reject the hypothesis that the angular coefficient is equal to one. Thus, we may assume that the ex-post bias is a stationary representation. Some procedures are traditional when assessing the existence of alternative regimes. One of them is the distribution of the variable: a bimodal, or even a fat tail, distribution (see HAMILTON, 1994, p. 687), shows signs of more than one regime. According to Table B, the Jarque-Bera test is far from configuring a normal distribution for the data. The asymmetry coefficient justifies this behavior.

TABLE B – DESCRIPTIVE STATISTICS – EX-POST BIAS

Mean	0.460734	Median	-0.022393	Jarque-Bera	33393.68
Standard deviation	3.827322	Asymmetry	7.312726	Prob.	0.000000
Variance	14.64839	Kurtosis	74.12512		

The evaluation also includes the estimation of the best univariate model representing the stochastic process of the analyzed series. The selection of an AR(1) is due to the adjustment in terms of information criteria and serial autocorrelation. Stability tests are used to check the presence of regimes. Chow test points to the existence of a structural break in July 1994. The RESET test points to misspecification of the model at 10% with one nonlinear term. The recursive estimation shows large variance of the constant,

20 Similar applications in BONOMO and GARCIA (1997) and SCHOR, BONOMO and PEREIRA (1998).

implying that the confidence interval, depending on the period of analysis, is quite wide.²¹

The “J” test of Davidson and MacKinnon (1981) was used for determination of the number of regimes. The models were selected with the aim of checking three components: autoregressive dynamics, regimes and dummy variables for economic plans. The justification for the use of dummy variables in some models is the violation of the maintenance of monetary policies in the period covered by CDBs. It is plausible to support the existence of an inflation forecast error in view of abrupt disinflation processes. Two variables were adopted: one to cover the price-freeze period of Collor II Plan (February to June 1991) and another one in the months after the switch to the Real Plan (July 1994). Both have unit value for the time comprised by the event.

TABLE C - “J” TEST - NUMBER OF REGIMES

Test	Estimated value	t statistics	Choice
Linear X MS(2)AR(1)-d1	0.636933	3.869482	MS(2)AR(1)-d1
Linear X MS(3)AR(5)-d1	1.016563	17.03038	MS(3)AR(5)-d1
MS(2)AR(1)-d1 X MS(2)AR(5)-d1	0.975699	10.78761	MS(2)AR(5)-d1
MS(2)AR(1)-d1 X MS(3)AR(5)-d1	0.994653	16.22412	MS(3)AR(5)-d1
MS(2)AR(5) X MS(3)AR(5)	1.078637	18.15003	MS(3)AR(5)
MS(2)AR(5) X MS(3)AR(5)-d1	1.017146	14.79181	MS(3)AR(5)-d1
MS(3)AR(5) X MS(3)AR(5)-d1	0.514212*	8.719056*	MS(3)AR(5)

Note: “Test” reports confronted models, the first of which is a null hypothesis, while the second is the alternative. “Estimated Value” shows the estimation of the alternative model in the test. “t statistics” informs the significance of the parameter.

21 Assuming a 95% interval, the constant varies from -5.77 to 4.90. This interval is unrealistic, especially after the Real Plan.

The information criteria point to diverse results: while the SIC points to the MS(2)AR(5)²² model, the Akaike criterion converges to MS(3)AR(5)-d1. It is important to emphasize the rejection of a low number of lags, besides the need of better control of the dummy variables, since, in most tests, the Real Plan variable was not significant at 5%. Possibly, this is consequence of anticipation of the measures by policymakers. This way, agents showed no “surprise” when implementing the new currency. Table C reports the results of “J” tests, where those models with simpler specifications are rejected in favor of more complex ones. An interesting result was obtained with MS(3)AR(5), as it excelled its equivalent with a dummy variable for Collor II plan. Nevertheless, this is inconsistent with the information criteria.

The estimation of the model with Markov switching and one control variable (price-freeze in Collor II Plan) yielded the results in table D.²³ The test of Davies (1977), standard to confirm the presence of more than one regime, shows the acceptance of the Markov model. The information criteria also point to the superiority of the model over the linear one. The residuals do not show autocorrelation. The sensitivity test, however, captures problems, for instance, in the elimination of ARCH-type residuals at 5%. The test is performed with smoothed residuals, trying, as Garcia and Perron (1996) did, to capture the presence of regime-dependent changes to the variance. In contrast, according to Kim and Nelson (2000), ARCH-type residuals were not found with the test on standardized residuals.

22 The nomenclature follows KROLZIG (1998): “MS(x)AR(y)” points to the model with “x” regimes and AR structure of “y” lags. “d” shows dummy variables in Collor II and Real Plans, “d1” shows dummy variables only in Collor II Plan.

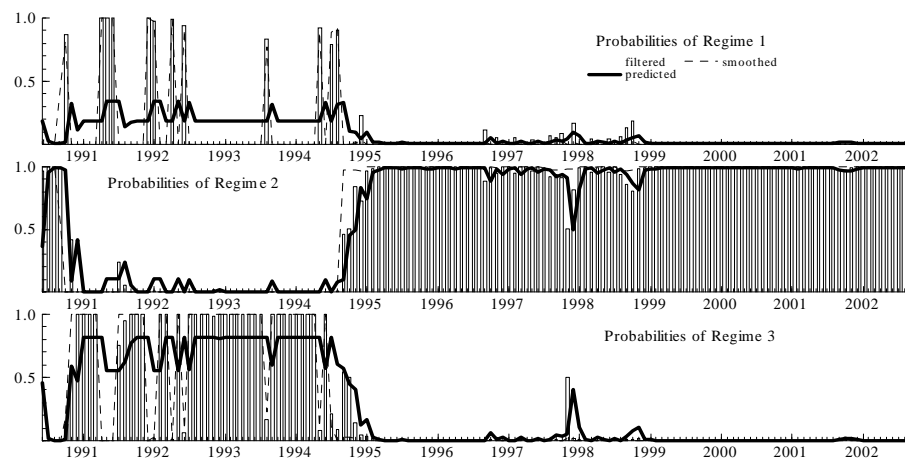
23 All models with Markov switches were estimated by the MS-VAR 1.30 package, written by Hans-Martin Krolzig for use as mentioned in Ox 3.00 software, developed by Jurgen Doornik.

TABLE D – ESTIMATION OF THE REGIME SWITCHING MODEL –
MS(3)AR(5)-DI

Variable	Coefficient	Std. Error	t-Statistic
Regime 1 – Standard Error: 0.13019			
C (Regime 1)	-0.6891	0.0507	-13.5952
AR(1)	0.6424	0.0150	42.8139
AR(2)	-0.5132	0.0136	-37.7882
AR(3)	0.0168	0.0169	0.9939
AR(4)	-0.1302	0.0134	-9.7302
AR(5)	0.0359	0.0191	1.8803
Collor II	-0.6891	0.0507	-13.5952
Regime 2 – Standard Error: 0.48182			
C (Regime 2)	-0.0185	0.0495	-0.3745
AR(1)	0.5845	0.0861	6.7882
AR(2)	-0.0248	0.0818	-0.3026
AR(3)	0.0897	0.0198	4.5379
AR(4)	-0.0540	0.0167	-3.2403
AR(5)	0.1194	0.0151	7.9072
Collor II	-4.3723	94.9852	-0.0460
Regime 3 – Standard Error: 2.1882			
C (Regime 3)	1.5081	0.4551	3.3136
AR(1)	-0.4969	0.1424	-3.4896
AR(2)	-0.0990	0.1790	-0.5532
AR(3)	-0.2933	0.1541	-1.9037
AR(4)	-0.1276	0.1615	-0.7898
AR(5)	-0.1270	0.1213	-1.0462
Collor II	10.5075	1.8273	5.7504
Comparison with the Linear Model:			
log-likelihood:	-171.2123	linear system :	-292.5500
AIC criterion:	2.7376	linear system :	4.0891
SC criterion:	3.3479	linear system :	4.2519
LR linearity test:	242.6753	Chi(16)=[0.0000] **	Chi(22)=[0.0000] **
DAVIES =	[0.0000] **		

The characterization of the processes is important for the analysis. As shown in Graph 1, regimes 2 and 3 determine low and high inflation regimes, respectively. Regime 2 presents low variance, nonexistence of systematic errors (constant indifferent from zero) and high persistence of ex-post bias. Regime 3 is characterized by underestimation of inflation and high persistence of ex-post bias just as in regime 2. Regime 1 captured two peaks between April and June 1991 and July and August 1994. In both cases, the periods coincide with expectations that are higher than inflation, either due to the hope for the end of the price-freeze at the first peak or due to the credibility regarding the July 1994 plan.

GRAPH 1 - ESTIMATED PROBABILITIES - MS(3)AR(5)-d1

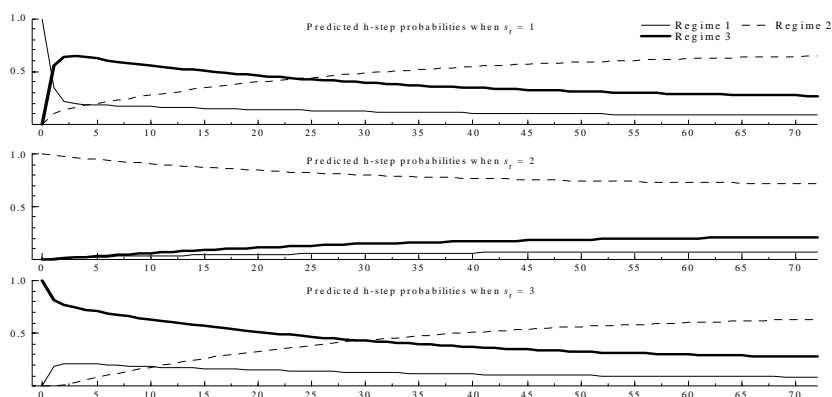


Durability is one more aspect of regime 1. The transition matrix of regimes is given by:

$$P = \begin{bmatrix} 0.3463 & 0.1042 & 0.5496 \\ 0.01159 & 0.9884 & 9.540 E - 11 \\ 0.1846 & 2.062 E - 5 & 0.8154 \end{bmatrix}$$

As we may observe, the largest probability, from the moment we enter regime 1, is that agents tend towards the regime with higher variance and high forecast error. It is hard to speculate about learning process during crises, as the agents try to compensate for the error made with another error in the opposite direction. We verify that there is a minimally calculated probability of being in regime 1 and remaining in it, with duration of approximately one month and a half, as against a probability of 86 months in period 2. This is directly related to the time interval at which regimes occur: regime 1 was always followed by high inflation periods. The sole exception is the period between July and August 1994, when the economy entered a permanent phase of low inflation.

GRAPH 2 - CONDITIONAL DURATION'S PROBABILITIES -
MS(3)AR(5)-d1



The conditional duration's probability, which conveys the notion of trajectory between regimes over time, is shown in Graph 2. It confirms that when economy enters regime 1, it tends to cause high inflation. However, in the long run, the permanence in high inflation is not supported, thus causing the economy to switch to a regime with lower volatility. According to the maxim of chronic cases of inflation, it is confirmed that "every hyperinflation has an end in itself."

Therefore, three aspects should be considered in estimations of the Phillips Curve for Brazil. The first concerns the fact that the perception about the Brazilian economy by the agents moves between well-defined regimes, characterized by the volatility of inflation and by the persistence of the agents' behavior. Secondly, the transition between regimes also has characteristics that relate to the economic policy environment. Thus, the way the economic policy is exposed by the government is important to expectation formations. Finally, the estimation of functions such as the Phillips Curve should consider some type of nonlinearity. Ferri, Greenberg and Day (2001) observe that these forms may interfere with the estimation in either three ways: by changing the relationship between expectations and inflation, the relationship between inflation and excess demand, and the relationship between inflation and exogenous factors. Here, the relationship will be exogenously imposed on the model, by the selection of the strictly convex form in the inflation-unemployment tradeoff. Nevertheless, as will be discussed, this format has a close link with the Markov model presented.

3.3 Estimate: a Short-term NAIRU for Brazil

The results of the estimation are presented in Table E. The convex format assumes increasing costs in terms of unemployment so that lower inflation rates can be obtained. Comparatively, there are increasing costs in terms of inflation, which correspond to lower rates of unemployment. All coefficients are significant and the LR statistics for the sum of expectation coefficients does not reject the hypothesis of a sum equal to the unit.²⁴ The high value of R^2 statistics is satisfactory when the variance matrix is estimated at each time point.²⁵ There are no signs of residual autocorrelation.

By assessing the variance of the state equation, it is noted that the NAIRU changes over time, with a significance of 5%. The greatest variation corresponded to almost one percentage point, registered right after the implementation of Collor II Plan (February 1991). Conversely, the largest unemployment gap ("NAIRU gap") was registered during December 1992.

24 $LR = 3.06$, compared with a chi-squared distribution with one degree of freedom.

25 Equivalent estimations that did not allow changes to the variance matrix presented problems with serial autocorrelation, despite the higher stability of the estimated NAIRU, both in the filtered and smoothed series.

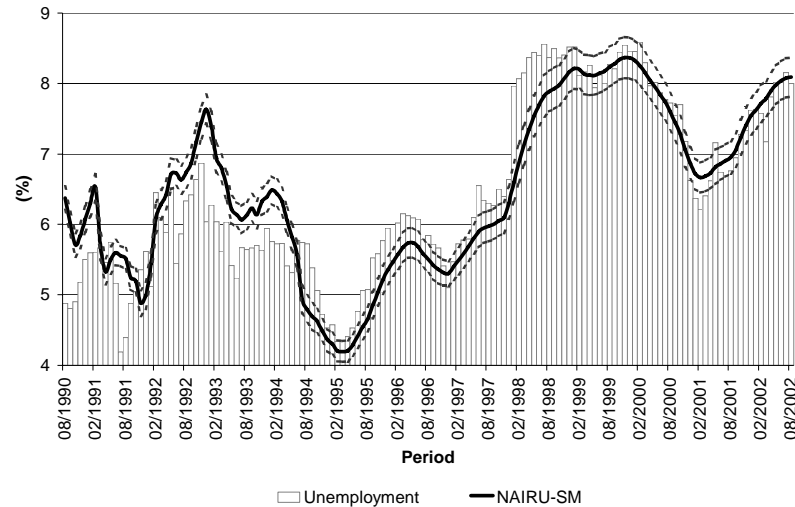
The behavior of the natural rate does not imply inaccuracy of estimations. Graph 3 shows unemployment, the smoothed NAIRU and the 95% confidence intervals for the estimation.²⁶ Comparing with results for the US, where Staiger, Stock and Watson (1996) obtained a 1.8% interval, the maximum interval (close to 0.8%, with a 95%CI) indicates a good NAIRU estimation.

TABLE E – PHILLIPS CURVE ESTIMATION – JANUARY/1990 TO AUGUST/2002

	Coefficient	Std. error	t statistics	Prob.
γ	-9.172741	1.015074	-9.036525	0.0000
α	0.828865	0.013803	60.04925	0.0000
α^*	0.138980	0.036436	3.814407	0.0002
β_1	1.030250	0.135166	7.622115	0.0000
Final γ^*	74.23850	7.444224	9.972631	0.0000
Variance of Measurement Equation	2.341133	0.215455	10.86598	0.0000
Variance of State Equation	14.94487	6.627610	2.254942	0.0257
Maximum [abs(Δu^*):	-0.842 (March/1991)	Maximum [$\nu^*_t - u_t$]:	1.599 (December/1992)	
Log Likelihood	-298.3996			
$\pi_t = \alpha \pi_t^e + \alpha^* \pi_{t-1} + \frac{(\gamma^*_t \text{ NAIRU}_t - \mu_t)}{u_t} + \beta_1 \text{SKEW}_t + \varepsilon_t$				
$\gamma^*_t = \gamma^*_{t-1} + \nu_t$				
R-squared	0.988309	Mean dependent var		8.701754
Adjusted R-squared	0.988062	S.D. dependent var		12.69984
S.E. of regression	1.387618	Sum squared resid		273.4187
Durbin-Watson stat	2.227588			

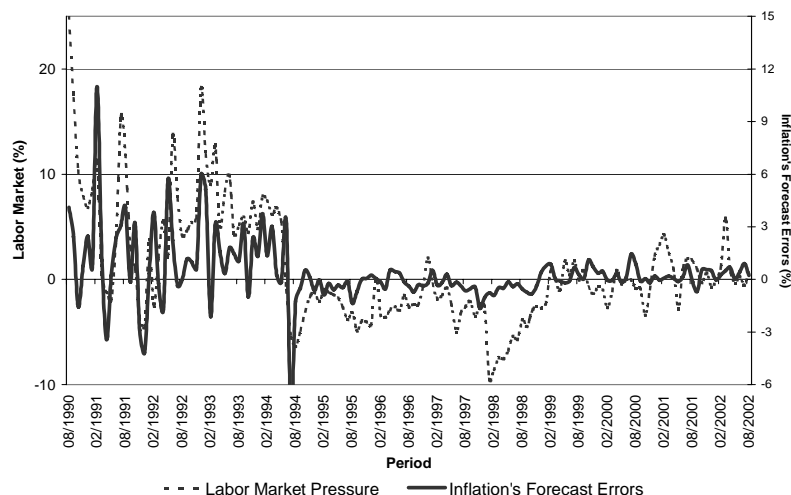
26 The standard deviation of the estimation was calculated by imposing restrictions on the fixed coefficients of the equation. Thus, the standard deviation for the variable coefficient only indicates the inaccuracy of the NAIRU estimation.

GRAPH 3 - UNEMPLOYMENT AND SMOOTHED NAIRU - AUG/90 TO AUG/02



We can assess the capacity of the model to adjust the excess demand to variations in inflation. Graph 4 relates the deviations of inflation from the expectation component ($\pi_t - \alpha\pi_t^e - (1-\alpha)\pi_{t-1}$) with excess demand ($(\chi u_t^* - u_t)/u_t$). It is possible to divide the period into three different phases: pre-Real Plan, first phase of the Real Plan and the post-1999 period. In the high inflation period, there was strong demand, which systematically made unemployment fall below the NAIRU, dissociated from inflation expectations, whose value was less than the observed. Exceptions are found after the implementation of Collor II Plan and between last quarter of 1991 and the end of first quarter of 1992, which characterizes the economic slowdown during the term of Mr. Marcílio Marques Moreira as Minister of Finance.

GRAPH 4 - HISTORICAL PERFORMANCE - NON-LINEAR PHILLIPS CURVE - AUG/90 TO AUG/02



During the first phase of the Real plan, unemployment was always above the NAIRU, as a result of measures that aimed at holding back the aggregate demand. The use of high real interest rates combined with a series of external shocks (namely, Mexico, 95, Asia, 97, Russia, 98) retracted the economic activity, cushioning a new rise in inflation. Graph 4 shows frequent overestimations of the inflation rate and the pressure for deflation observed in the market. After the depreciation of Real, in January 1999, the measure of excess demand takes on some kind of threshold between inflation control and economic growth. Between 1999 and 2001, the negative inflation surprises are corroborated by the higher pressure for aggregate demand on the prices. It is possible to observe two points of pressure for demand on the rates of inflation, seen in the first semester of 2001 and in the first semester of 2002.

The skewness variable proposed by Mio (2001) is significant in the model. The estimation implies that an one-percentage-point increase in the spread between headline and core produces a variation of 1.03 percentage points in inflation. To test for inertia, Mio (2001) proposes that by removing the skewness from both sides of the function, the Curve may be modeled in an equivalent form by “core inflation.” For that, it is necessary that: i) the

asymmetry coefficient in t be indifferent from the unit; and, ii) skewness lagged coefficients be symmetric to those of the lagged inflation. The LR test performed²⁷ rejects this set of hypotheses (LR = 22.46, for a chi-squared distribution with two degrees of freedom), and allows us to state that the supply shocks to the Brazilian economy are not responsible for the totality of the inertial component in the analyzed period, with an autonomous response of inflation to shocks.

It may seem surprising to argue that the rise in inflation after the devaluation of the Real, in 1999, was caused by a fall in the NAIRU gap, once there was a strong cost pressure on prices. However, Figure A shows that the *SKEW* variable captures relative price changes (price asymmetry) caused by a temporary shock over a few sectors of the economy (tradable goods). Thus, at least part of the exchange rate variation was removed from the estimated implicit component. The fall in the NAIRU gap could therefore not be caused by a model's misspecification that excluded the exchange rate.

Three robustness tests were performed with the estimated model. The first consists of the comparison of the values for the expectations coefficients in formulations with different measures of activity. The results showed coefficients with fewer oscillations, even when seasonal components are included.²⁸ The greater discrepancies were related to equations that used the unemployment of the metropolitan region of São Paulo (DIEESE) and the industrial production of IBGE. In general, tests reject the hypothesis that the sum of expectations coefficients is equal to the unit.

The second test is the application of the "J" test aiming to verify control variables, the seasonal factor of the unemployment and the convexity of the Curve. In the first two cases, the standard model has clear advantage over the alternative, including a model estimated with only adaptive expectations. Conversely, the comparison with the linear model led to inconclusive results. In fact, the latter has good data adjustment, almost equivalent to the standard model, if observed through the R^2 of both regressions. What shar-

27 Models used here are available from authors. Note that comparison in this test should not be made on the standard model, as this type of model does not employ lags of the *SKEW* variable.

28 Alternative estimations available from authors.

ply distinguishes it is the estimated NAIUR's confidence interval, shown in Graph 5 together with the standard NAIUR.

TABLE F - "J" TEST- COMPONENTS OF THE MODEL - "ENCOMPASSING"

Test	Estimated value	t statistics	Choice
Model without control variables X Standard Model	0.926420	4.517390	Standard Model
Model without the "EXPEC" variable X Standard Model	1.005652	24.17325	Standard Model
Model with unemployment seasonality X Standard Model	1.090562	4.030054	Standard Model
Linear Model X Standard Model	-0.497429	-0.991702	-

Note: "Test" reports confronted models, of which the first is a null hypothesis, and the second the alternative. "Estimated Value" shows the estimation of the alternative model on the test. "t statistics" informs the significance of the parameter.

GRAPH 5 - COMPARISON OF ESTIMATES - CONVEX AND LINEAR NAIUR

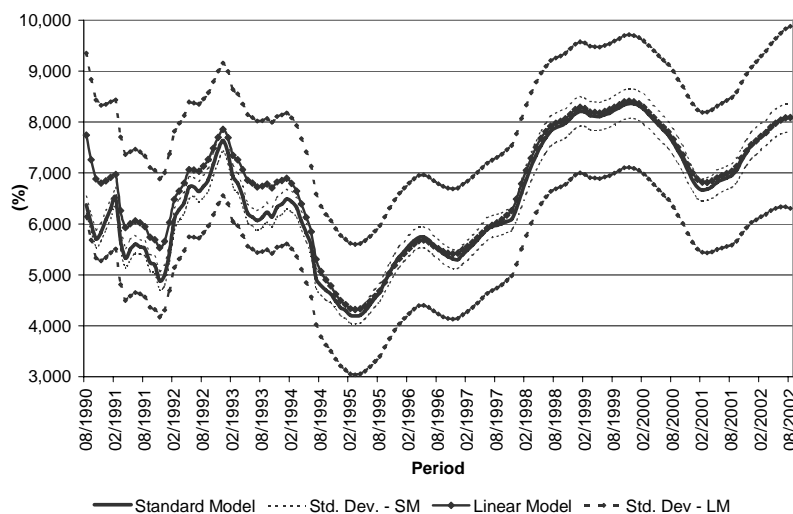


Table G compares two estimations in partial samples, assuming a structural break in July 1994. To improve accuracy, the sampling of the post-Real Plan period began in January 1995. Evidence shows strong sensitivity of the model. The expectations formation changes in comparison with the basic model and between periods. Results of the *SKEW* variables are also reported.

This sensitivity, however, does not seem to cause problems since the R^2 statistics remains very high in every estimation.

TABLE G – ESTIMATION IN PARTIAL SAMPLES

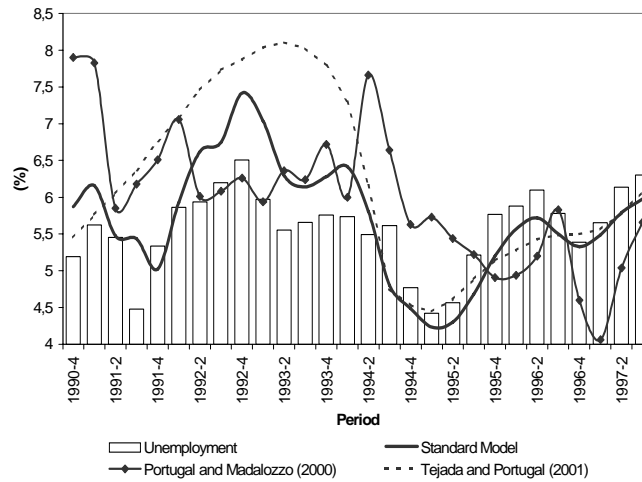
Model	"Expec"	"IPCA(-1)"	"SKEW"	R^2
Standard	0.828865 (60.04925*)	0.138980 (3.814407*)	1.00250 (7.622115*)	0.988309
Jan/1990 to Jun/1994	0.444102 (3.006142*)	0.305771 (1.745699)	0.380556 (1.046739)	0.956018
Jan/1995 to Aug/2002	-0.045805 (-0.840722)	0.104464 (2.173805*)	1.315169 (35.53174*)	0.999999

Note: (*) indicates the significance of parameters estimated at 5%.

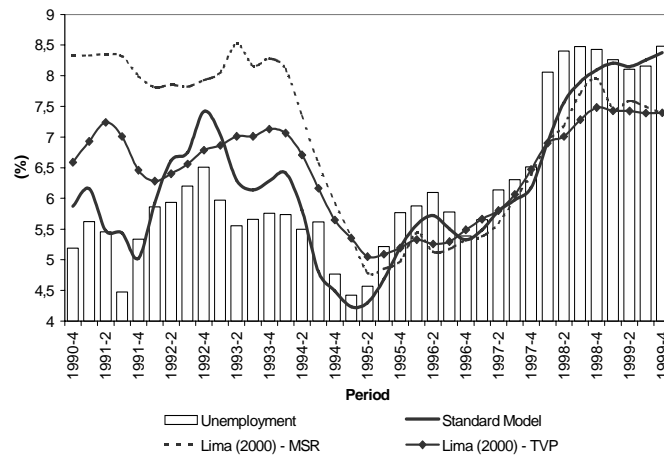
Finally, Graph 6 compares the NAIRU with results obtained by Portugal and Madalozzo (2000) and Tejada and Portugal (2001), whereas Graph 7 reports the results of Lima (2000).²⁹ While studies that used filters for the unobservable components revealed an uptrend in the period between the fourth quarter of 1991 and the second quarter of 1993, Portugal and Madalozzo (2000) show undefined behavior that lasts until the first half of 1994. When all estimates reach a valley in the first semester of 1995, characterizing the implementation of the Real Plan, the NAIRU generated by transfer function shows a new increase only in 1996. Another difference is the NAIRU gap value presented by the estimates of Tejada and Portugal (2001) and Lima (2000), in the MSR model, in the period that preceded the Real Plan. This result was also obtained in the standard model, however it is not such large as the authors point out. Finally, we should highlight the gap difference after the first quarter of 1999, since Lima (2000) points to output loss, as a result of a NAIRU gap larger than the standard model.

²⁹ The data were brought to the quarterly frequency so that they could be compatible with the first one, whereas the use of the smoothed series aims at comparison with the latter two studies.

GRAPH 6 - COMPARING RESULTS - NAIRU IN OTHER STUDIES



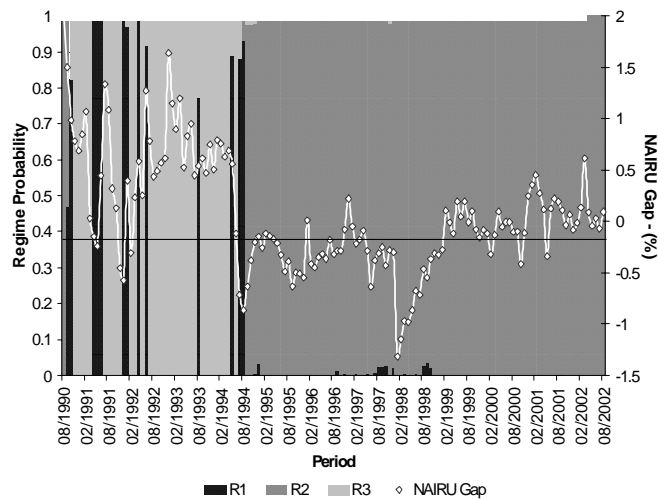
GRAPH 7 - COMPARING RESULTS - NAIRU IN OTHER STUDIES - 1990 TO 1999



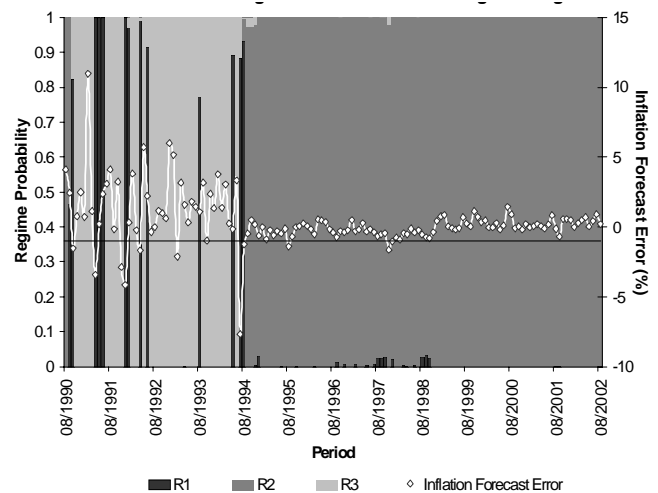
We analyze now the relationship between Markov regimes and the estimated NAIRU. Graphs 8 and 9 combine the smoothed probabilities of the regimes with the fundamental characteristics of the Phillips Curve: NAIRU gap and the spread between inflation and expectations. Apparently, there are two different behaviors in the high-inflation period and a third one after the Real Plan. In the months following the Real Plan, the NAIRU gap does not

seem to contain important information about the expectations. In fact, in regime 2, there is no systematic error process in the formation of inflation expectations. Therefore, the determination of regimes did not pass through the two stages of demand pressure on inflation. The result should be ascribed to the transparency of the government towards the monetary policy, since the correction of the ex-post bias is slow-paced. Thus, the predictability of monetary policy reduced the “punishment” on agents for maintaining their expectations far from rational.

GRAPH 8 - MARKOVIAN REGIMES AND NAIRU GAP - AUG/90 TO AUG/02



GRAPH 9 - MARKOVIAN REGIMES AND INFLATION ERROR - AUG/90 TO AUG/02



On the other hand, the dynamics of hyperinflation has remarkable characteristics, as it comprises two different regimes. While, during most of the period, there was a significant demand gap, expectations remained below the observed inflation. This is the behavior of regime 3, where shocks over the ex-post bias spread almost like a random walk and where inflation is underestimated. However, when the gap in activity decreased, its minimum was characterized by regime 1: overestimation of inflation and low persistence of the ex-post bias. So, expectations seemingly anticipated the point where aggregate demand started to pressure inflation again.

In fact, by analyzing the periods where regime 1 coincides with pressures produced by the NAIRU gap we find a correlation with three major events. In mid-1990, the Collor I Plan already showed operational problems, compelling the government to unfreeze prices. Worth of note is the permission for the employment contracts to be renegotiated outside the base date, the pressure on the prices of agricultural products, as a result of the harvest yield, and the increase in the manufactured products' prices, correcting price-freeze distortions. The second period (April to June 1991) stands for replacement of the Minister of Finance and generalized disbelief in Collor II Plan. The third phase (November 1991 to January 1992) indicates orthodox policies by minister Moreira, who, despite the rise in real interests, shocks on public tariffs and exchange rate depreciation, attempted to reorganize public finances and international reserves, respectively. Thus, the effects on the expected inflation rate could not be neglected.

This way, the dynamics proposed by Markov regimes focuses on the future perception of agents about the economy. In the three outlined regimes, it is the future of the economy that determines the perception about inflation. While in regime 2 this perception involved the maintenance of evident monetary policies, in regimes 1 and 3, the short-term relationship with the excess aggregate demand determined the reaction of agents to surprises in the economy.

We must analyze the role of the NAIRU as a guide of the monetary policy. When considering its changes and the absence of short-term effects of the monetary policy, Estrella and Mishkin (1998) regard the NAIRU not as a

long-term guide, but as a short and medium term indicator that reflects supply shocks on the economy. The estimation here considers these factors including a variable that measures the agents' behavior on the expectations formation and one that encompasses the effects of short-term shocks on the rate of inflation, in addition to monetary policy corrections. Thus, the uncertainty over the NAIRU should not be seen as a hindrance to the determination of economic policy objectives. As we can observe, the agents assess two major points: monetary policy transparency and demand pressures on inflation.

3.4 Monetary Policy Responses Under Partially Rational Expectations

The aim of this section is to test the monetary policy responses in an environment that presupposes the results heretofore developed and tested. The two hypotheses supporting the formulation are the division of agents through the expectations formation process; and the incorporation of the Phillips Curve as the kernel of the estimated system. These restrictions are a differential from literature.³⁰ For Brazil, there are few systems' estimations with the same goal. Noteworthy is Minella (2001), who estimates a system with four endogenous variables (prices, output, interest rates and monetary aggregate) between 1975 and 2000. Despite the inclusion of dummy variables, the author's stratification of sample into three phases was crucial to get consistent results. This section will try to answer the author's propositions: i) whether monetary policy shocks affect inflation; ii) whether monetary policy shocks affect the economic activity; iii) the response of authorities to shocks on inflation and unemployment; iv) the persistence of the inflation; and v) the relationship between money stock and interest rates (MINELLA, 2001, page 5).

The addition of M1 stock growth rate aims at discriminating the behavior of variables in relation to different monetary policy instruments. This is consistent with other studies (see PASTORE, 1995, ROCHA, 1997, and MINELLA, 2001). Although the variable that controls monetary policy is the primary interest rate, the simulation included M1 to make it similar to Mi-

³⁰ See, for instance, the classic work by SIMS (1992) and KIM (1999), with a review for G7 countries.

nella (2001). The system uses five endogenous variables: *IPCA*, *EXPEC*, *DSELIC*, *MI-Census* and the *GAP* variable (difference between smoothed NAIRU and unemployment). *SKEW* is the exogenous variable. The inclusion of the measure of expectations seeks to eliminate the price puzzle from the system, where the positive shock on interest rates increases the price level. This is a common result for US and OECD countries, also reported by Minella (2001) for Brazil. According to Sims (1992), it stems from the inexistence of variables that capture expectations, which makes anticipated shocks produce an increase in price level.

VAR estimation was sensitive to regime switches. The use of variables to mark economic plans does not cause convergence of impulse-response functions, in addition to problems with the residuals. The absence of convergence is a greater problem, since there is cointegration between the involved variables. The residual correlation matrix also has simultaneity problems, involving the *EXPEC*, *IPCA* and Δ *SELIC* variables. The problem was recurrent in all VAR estimations, both through OLS and SUR.³¹ Thus, the problem is corrected by imposing an equation with its own dynamics relating at least two of the variables involved. The natural option is for the estimated Phillips Curve.³²

The estimation comprises the period between January 1995 and August 2002, trying to establish comparison with Minella (2001) in the greatest number of characteristics. The model presents two lags in equations in which *IPCA* is not an endogenous variable. The LR test points to the model with one lag. However, tests over residuals favored the alternative choice, as shown in Table H. The R^2 test, in Table J, shows reasonable adjustment, especially with equations whose endogenous variables are monetary policy instruments. Table I shows the correlation of the system's residuals, where the bad result refers to the relationship between *SELIC* rate and expectations. The result might probably originate from the proxy's construction, since changes to the primary rate may cause contemporaneous changes to the measure.

31 Results of alternative systems, including the full sample, available from authors.

32 We used a slightly different estimation of the curve, incorporating Δ *SELIC* in the equation, in order to add the direct impact of the interest rates over inflation.

TABLE H – TESTS ON THE SYSTEM’S RESIDUALS – JANUARY/95 TO AUGUST/02

Test	GAP	IPCA	EXPEC	M1-Census	Δ SELIC
Autocorrelation – LM(1)	0.930157	0.000000	0.999999	0.999999	0.999999
Autocorrelation – LM(6)	0.933872	0.000001	0.938100	0.998573	0.998839
ARCH	0.508244	0.000000	0.654700	0.363733	0.688501
Heteroskedasticity	0.001586	0.000000	0.972803	0.958078	0.996947
Normality	0.001899	0.000000	0.000000	0.000000	0.000000

The estimation has few coefficients with significance at 5%. Therefore, the good adjustment of the residuals to the specification tests is surprising. There are problems with the signs, but results should be analyzed through the short and long-term multipliers of the system. Interestingly enough, few equations come close to a random walk process. However, the “t” test in the equation with the endogenous *EXPEC* variable does not reject the hypothesis that the sum of coefficients of *EXPEC(-1)* and *DSELIC(-1)* is equal to one ($t_c = 0.12249$). Again, the observation about the variable construction is worth of note.

TABLE I – RESIDUAL CORRELATION MATRIX OF THE SYSTEM

	IPCA	EXPEC	GAP	Δ SELIC	M1-Census
IPCA	1.000000	0.245331	0.164145	0.168265	-0.098971
EXPEC		1.000000	0.037941	0.642242	-0.156519
GAP			1.000000	0.005397	-0.130831
Δ SELIC				1.000000	-0.240745
M1-Census					1.000000

TABLE J – ESTIMATION OF THE SYSTEM – JANUARY/95 TO AUGUST/2002

	EXPEC	GAP	ΔSELIC	M1-Census
IPCA(-1)	0.064179 (0.109640)	0.038028 (0.061531)	-0.007979 (0.091041)	-0.002969 (0.011474)
IPCA(-2)	-0.013347 (0.103994)	-0.003573 (0.058363)	-0.091949 (0.086353)	-0.009600 (0.010883)
EXPEC(-1)	0.65003* (0.136144)	-0.000207 (0.076406)	0.123943 (0.113049)	-0.001862 (0.014248)
EXPEC(-2)	0.209054 (0.129766)	-0.085236 (0.072827)	-0.134156 (0.107753)	0.011755 (0.013580)
HIATO(-1)	-0.111628 (0.198461)	0.636478* (0.111379)	0.256128 (0.164795)	0.004454 (0.020769)
HIATO(-2)	0.128640 (0.196248)	0.090788 (0.110137)	-0.196291 (0.162958)	0.021010 (0.020538)
ΔSELIC(-1)	0.367480* (0.163797)	-0.053534 (0.091925)	-0.147413 (0.136012)	-0.025049 (0.017142)
ΔSELIC(-2)	-0.063570 (0.138390)	-0.136296 (0.077666)	-0.123646 (0.114914)	-0.023527 (0.014483)
M1-Census(-1)	-0.820007 (1.043388)	-0.131048 (0.585564)	0.513323 (0.866395)	-0.028156 (0.109192)
M1-Census(-2)	1.100051 (1.025017)	-0.026447 (0.575254)	0.547023 (0.851141)	0.181397 (0.107269)
SKEW	0.078763 (0.157619)	-0.072506 (0.088458)	-0.053648 (0.130882)	0.004718 (0.016495)
C	0.038258 (0.076525)	0.008289 (0.042947)	0.055223 (0.063544)	0.017708* (0.008008)
Determinant residual covariance			2.92E-08	
Equation 1: $IPCA = -0.0838189883157 - 0.0495242130537 * EXPEC + 0.215993147999 * IPCA(-1) + 2.102155 * INVU + 0.01776961316 * \Delta SELIC + 1.24440668664 * SKEW$				
R-squared	0.654021		Sum squared resid	10.99682
Adjusted R-squared	0.657782		Durbin-Watson stat	0.402076
S.E. of regression	0.345732		Observations:	92
Equation 2: EXPEC				
R-squared	0.804012		Sum squared resid	11.03561
Adjusted R-squared	0.777063		Durbin-Watson stat	1.996776
S.E. of regression	0.371410		Observations:	92
Equation 3: HIATO				
R-squared	0.648905		Sum squared resid	3.475795
Adjusted R-squared	0.600630		Durbin-Watson stat	2.113468
S.E. of regression	0.208440		Observations:	92
Equation 4: ΔSELIC				
R-squared	0.126544		Sum squared resid	7.609168
Adjusted R-squared	0.006444		Durbin-Watson stat	2.041001
S.E. of regression	0.308407		Observations:	92
Equation 5: M1-Census				
R-squared	0.129785		Sum squared resid	0.120861
Adjusted R-squared	0.010131		Durbin-Watson stat	1.934754
S.E. of regression	0.038868		Observations:	92

Note: (*) shows the significance of the estimation at 5%. Standard deviation is shown in parentheses.

Indeed, the *EXPEC* variable seems to be correlated with inflation expectations, since the impulse-response function of an interest rate shock, shown in Graph 10, yields expected results: the stagnation of expectations at a high level and the correction of the price-puzzle, with reduction of inflation after the increase in interests. Minella (2001) only obtained equivalent results when a variable that controls international crises was included. By observing the impact of interests on the real side of the economy in Graph 11, it is possible to perceive the influencing power of monetary policy over the NAIRU gap after the Real Plan. The accumulated effect of an interest rate shock on the gap stabilizes at around 0.35 points (absolute value, since a positive shock decreases the gap, expressed as the difference between NAIRU and unemployment). The result is considerable, given that the average NAIRU gap during the period was of -0.21 percentage points.

The assessment of monetary policy should be based on instrument changes caused by the shocks on the variables found in the objective function of the monetary authority. Besides the traditional variables (inflation and NAIRU gap), it is important to check the reactions to the changes in agents' expectations, once Bernanke *et alii* (1999) claim that inflation targeting systems are best seen as a way to control expectations. The effects on M1 growth produced by the shocks are negligible, even when accumulated.³³ On the other hand, interest rates seem to react better to expectations than to inflation. As most shocks were mainly related to supply during the period,³⁴ we should expect what is shown in Graph 13. The reaction of the government to shocks on the real side of the economy, characterized by fluctuations in interest rates, seems to be offset when it is accumulated, although it is quite strong over time. Since the effect on M1 growth is negligible, it is not plausible to affirm that the objective of the government's monetary policy is the stabilization of the economic cycle.

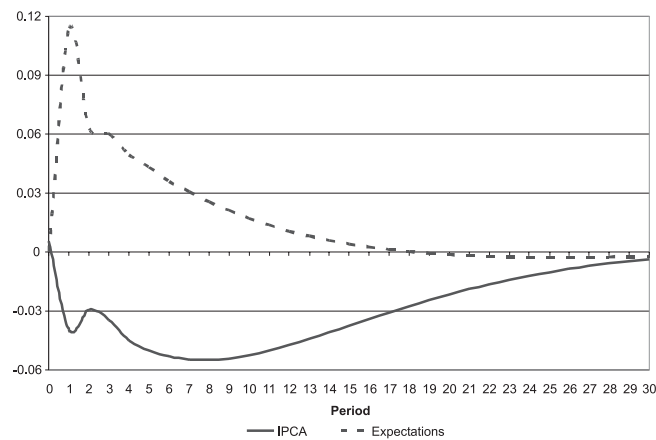
The existence of instrument sterilization is essential for confirming any analysis of the objective function of the monetary policy. The hypothesis is

33 Graphs 12 and 13 are on the same vertical scale so that we can have the precise dimension of the effects.

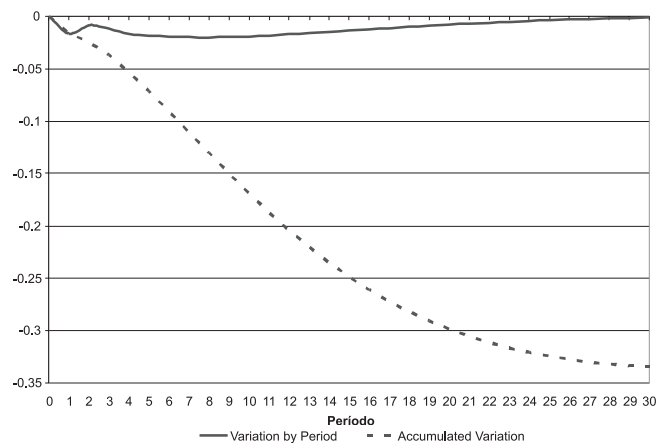
34 Namely, exchange rate depreciations of 1999 and 2001, in addition to the electric power rationing during 2001.

tested out by the functions of shock on the SELIC rate and the effects on M1, and vice versa. As shown in Graph 14, the effects of an increase in M1 are evident, despite their small magnitude. On the other hand, positive shocks to the interest rate have their effects enhanced by a reduction in the growth rate of the monetary aggregate. Thus, the monetary authority apparently fine-tunes the interest rates when they alter M1, but uses monetary policy with all instruments when the intention is to reduce the aggregate demand.

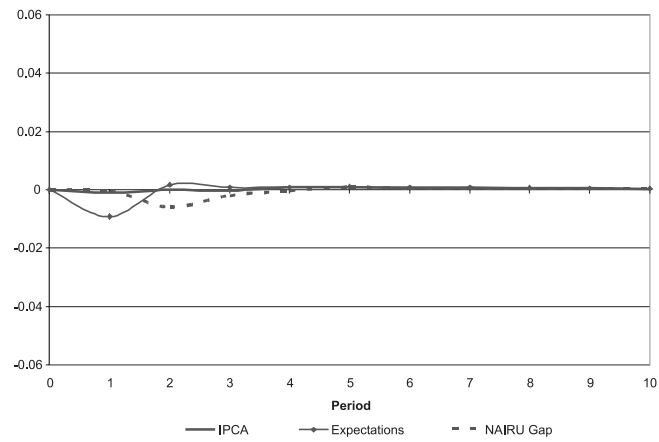
GRAPH 10 - IMPACT OF "ΔSELIC" OVER IPCA AND EXPECTATIONS



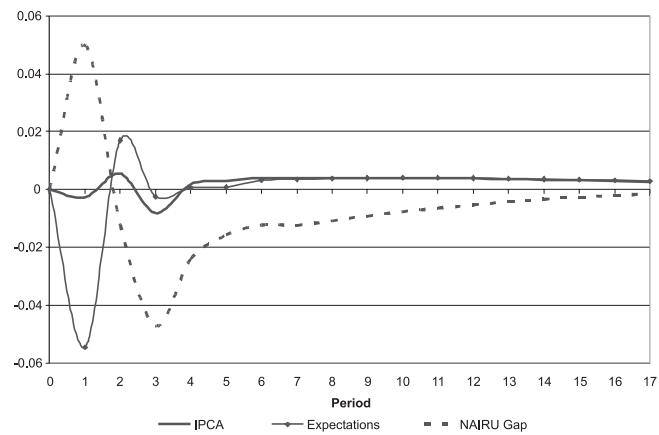
GRAPH 11 - IMPACT OF "ΔSELIC" OVER NAIRU GAP



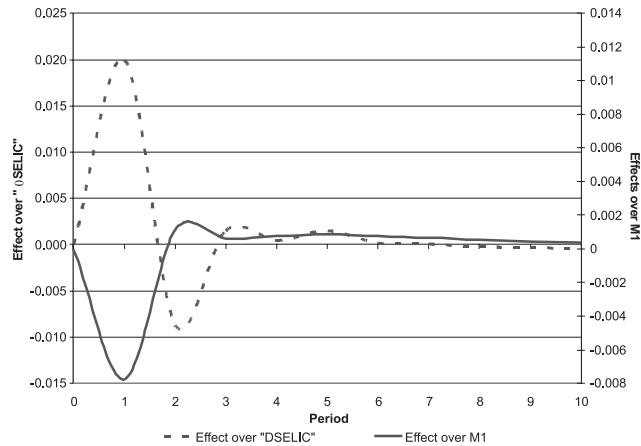
GRAPH 12 - EFFECTS OVER MI FROM SHOCKS ON MONETARY POLICY OBJECTIVES



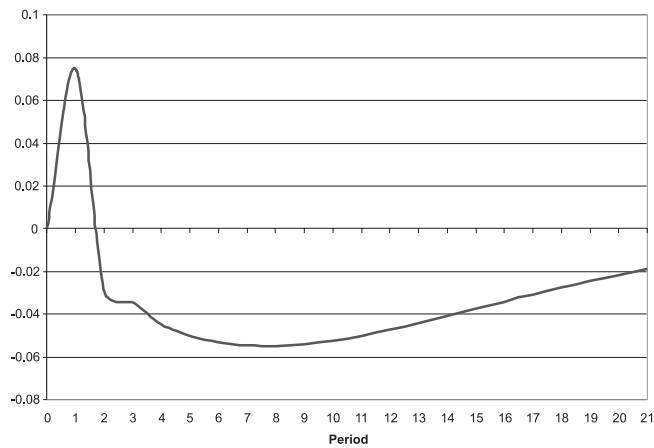
GRAPH 13 - EFFECTS OVER "ΔSELIC" FROM SHOCKS ON MONETARY POLICY OBJECTIVES



GRAPH 14 - EFFECTS FROM SHOCKS ON M1 OVER "ΔSELIC" AND FROM "ΔSELIC" OVER M1



GRAPH 15 - INFLATIONARY PERSISTENCE



Finally, we analyze inflation persistence. According to Graph 15, inertia has a minor role, with shocks that result in persistent deflation, but with no relevant magnitude. This way, the break of the inertial factor seems to have played a truly major role in the stabilization of Brazilian economy as from July 1994.

The estimation of equation systems produced interesting responses, seen both as quantitative method and macroeconomics and monetary policy. The method of estimation and specification of the dynamics of inflation by the Phillips Curve should be underscored, as VAR by OLS deteriorates residual correlation between equations and causes specification problems for the period. By way of analysis of the monetary policy, the systems confirm the hypothesis of the power of monetary authority in low-inflation periods, due to the influence on the economic activity, characterized by the effects of interest rate shocks on the NAIRU gap, and on the monetary side, by the authority's response to shocks on inflation and expectations. Among possible improvements, the specification of an equation on the unemployment gap (such as an "Okun equation," for instance) might provide other approaches to the problem.

CONCLUSIONS

The present study aimed at broadening the empirical literature on the Phillips Curve in Brazil through a consistent relationship with three objectives: expectations formation, dynamics between inflation and economic activity and relationship between the Phillips Curve and monetary policy instruments. The text gathered these highly complementary topics together, which the literature usually presents in an incoherent manner. We presented the separation of the adaptive component into results that are robust to alternatives. The rate of 27% of agents with adaptive expectations remained basically constant on the tests. Alternatively, the agents are said to use a 0.27 weight on past inflation when forming their expectations. We should highlight that the objective is not to contrast the formulations made by Fuhrer and Moore (1995) and Roberts (1997), the latter of which is used as the basis for our analysis, but justify studies that could relax the hypotheses of Almeida, Moreira and Pinheiro (2002) about expectations so that better conclusions can be reached.

Another innovation consisted in establishing a relationship between the agents' perception and the observed inflation characterizing distinct regimes, marked out by inflation's variance and its persistence in response to

shocks. On these grounds, indicative signs underpin the relationship between the NAIRU gap and expectations. Periods in which the policy was predictable resulted in few demand pressures. In addition, in anticipation of economic changes, the excess demand was reduced. A suggestion may be to elucidate the channel through which the anticipation of the agents occurs, checking if there are other absorbed signs, besides the Nairu-gap, which allow changes in such perception.

With regard to the NAIRU, the obtained results are consistent with the Brazilian literature. The NAIRU has an appropriate behavior in the Brazilian context and allows an outlook on the period that follows the depreciation of the Real, in 1999. Whereas Lima (2000) points to the existence of output loss, observed in the unemployment gap, the results show a certain balance in the labor market. The fact that the year 1999 ended with a slight increase in GDP (0.79%, according to the IBGE) corroborates the analysis. The accuracy of the estimation, when compared with other studies, is remarkable. The confidence intervals obtained by Lima (2000), for example, are too large, being equivalent to studies that used the linear relationship between unemployment and inflation. Thus, it is important to further assess tests for the validity of nonlinear models in the Phillips Curve, as performed herein.

Microfoundation yielded good results for the macroeconomic hypotheses. The use of the measure of asymmetry allowed the formalization of another test on the presence of an autonomous inertial component in Brazilian inflation. The rejected hypothesis about the equivalence between Phillips Curves with core inflation and models controlled by skewness supports the inertial analyses that arose in the 1980s, as shocks do not justify all the variation in inflation during that period.

The system of equations brought on the traditionally expected results. The power of the monetary policy instruments in a stable environment is the most robust obtained. The influence of expectations about the price puzzle is also of note. On top of that, the dynamics of the Phillips Curve may correct problems between equations, which compromise VAR estimations. The increment of the explanation is a crucial task for the analysis of the moneta-

ry policy. Also, to consider the best appraisal of expectations is a good strategy for the study. Another relevant aspect for Brazil is to establish a relationship equivalent to the Phillips Curve with output measures, such as industrial production, instead of unemployment.

As far as normative assessments of the economic policy are concerned, the most relevant result may already have a common agreement in the literature: the necessity for transparency in policymakers' actions, aiming at price stability. If Debelle and Laxton (1997) are correct about the implications of a convex relationship between inflation and unemployment, i.e. inflation variance is a function of unemployment variance, forward-looking actions that are able to reduce the latter one take on an added importance, supposing that a smaller inflation variability is better than a larger one. On the other hand, the convex shape implies preference for a gradualist approach inside the curve's tradeoff,³⁵ since an accelerated increase in unemployment, with the aim of controlling inflation, will have limited success with higher real costs, due to the absence of perfectly rational expectations.

For Brazil, after the currency depreciation in 1999, the labor market found some balance, albeit above its historical average. As the inflation between 1999 and 2002 was also higher than the average rate of the Real Plan, it seems that the Phillips Curve "shifted outwards", where, for the same inflation level, only higher rates of unemployment are compatible (Graph 3 shows the equilibrium of the labor market). Separating between the structure of the labor market and demand pressure is a challenge to the authorities. Note that inflation has had exogenous determinants in the last few years. Even if inflation tends to decrease, the labor market is unlikely to show changes in its level, resulting in high real costs that prevent inflation rates from dropping and reaching levels that resemble those between 1995 and 1998. Gradualist policies are once again important, since they are capable to indicate the behavior of monetary authorities towards shocks.

Last but not least, a comment about Staiger *et alii* (2001) classification of economists into two groups accordingly to their view on the Phillips Curve.

35 The same cannot be argued if a shift in the inflation-unemployment plane is inferred. This requires a general equilibrium analysis.

Apparently, even with successive shocks to the Brazilian economy, the Phillips Curve is still vigorous and may serve to guide the economic policy. Its robustness leads us to believe that, by incorporating certain properties, the Phillips Curve can have a great power of explanation for the economic phenomena in generations yet to come.

REFERENCES

- ALMEIDA, C. L.; MOREIRA, T. B. S.; PINHEIRO, F. J. Q. Modelos novo-keynesianos de rigidez de preços e de inflação: evidência empírica para o Brasil. *Revista Economia Aplicada*, São Paulo, v. 6, n. 1, p. 49-65, jan.-mar. 2002.
- BAKSHSHI, H.; YATES, A. *Are U.K. inflation expectations rational?* Bank of England Discussion Papers, London, 1998.
- BALL, L. Credible disinflation with staggered price setting. *American Economic Review*, v. 84, p. 282-289, March 1994.
- BALL, L. Disinflation with imperfect credibility. *Journal of Monetary Economics*, v. 35, p. 5-23, 1995.
- _____. Near rationality and inflation in two monetary regimes. *NBER Working Paper*, n. 7988. October 2000.
- BALL, L.; MANKIW, N. G. Relative-price changes as aggregate supply shocks. *Quarterly Journal of Economics*, v. 110, n. 1, p. 161-193, 1995.
- BARR, D. G.; CAMPBELL, J. Y. Inflation, real interest rates, and the bond market: a study of U.K. Nominal and index-linked government bond prices. *NBER Working Paper*, n. 5821. November 1996.
- BERK, J. M. Consumers' inflation expectations and monetary policy in Europe. *Research Memoranda* n. 2000-20, Faculteit der Economische Wetenschappen en Econometric. Holland, June 2000.
- BERNANKE, B. S.; LAUBACH, T.; MISHKIN, F. S.; POSEN, A. S. *Inflation targeting – Lessons from the international experience*. First edition. New Jersey: Princeton University Press, 1999.
- BONOMO, M. A.; GARCIA, R. *Tests of conditional asset pricing models in the Brazilian stock market*. Textos para discussão do Centre de Recherche et Développement en Économie da Université de Montréal. Canada, 1997.
- BONOMO, M. A.; CARRASCO, V.; MOREIRA, H. *Aprendizado evolucionário, inércia inflacionária e recessão em desinflações monetárias*. Rio

- de Janeiro: Departamento de Economia da Pontifícia Universidade Católica do Rio de Janeiro, 2000. (Texto para discussão n. 437).
- BRYAN, M. F.; CECCHETTI, S. G. Inflation and the distribution of price changes. *Review of Economics and Statistics*, v. 81, n. 2, p. 188-196, 1999.
- CALVO, G. A. Staggered prices in a utility-maximizing framework. *Journal of Monetary Economics*, v. 12, n. 3, p. 983-998, Set. 1983.
- CARROLL, C. D. The epidemiology of macroeconomic expectations. *NBER Working Paper*, n. 8695. December 2001.
- CATI, R. C.; GARCIA, M. G. P.; PERRON, P. *Unit roots in the presence of abrupt governmental interventions with an application to Brazilian data*. Rio de Janeiro: Departamento de Economia da Pontifícia Universidade Católica do Rio de Janeiro, dez. 1995. (Texto para discussão n. 349).
- CLEMENS, M. P.; KROLZIG, H-M. Modeling business cycles features using switching regime models. *Discussion Paper* n. 58, University of Oxford, 2001.
- DAHL, C. M.; HANSEN, N. L. The Formation of Inflation Expectations under changing inflation regimes. *Studies of Nonlinear Dynamics and Econometrics*, The MIT Press, v. 4, n. 4, 2001.
- DAVIDSON, R.; MACKINNON, J. Several tests for model specification in the presence of alternative hypotheses. *Econometrica*, v. 49, p. 781-793, 1981.
- DAVIES, R. B. Hypothesis testing when a nuisance parameter is present only under the alternative. *Biometrika*, v. 64, p. 247-254, 1977.
- DEBELLE, G.; LAXTON, D. Is the Phillips curve really a curve? Some evidence for Canada, the United Kingdom and the United States. *IMF Staff Papers*, v. 44, Jun. 1997.
- ERCEG, C. J.; LEVIN, A. T. Imperfect credibility and inflation persistence. *Working Papers*, Board of Governors of the Federal Reserve, n. 2001-45, Oct. 2001.
- ESTRELLA, A.; MISHKIN, F. S. Rethinking the role of NAIRU in monetary policy: implications of model formulation and uncertainty. *NBER Working Paper*, n. 6518, April 1998.
- FERRI, P.; GREENBERG, E.; DAY, R. H. The Phillips curve, regime Switching, and the NAIRU. *Journal of Economic Behavior & Organization*, v. 46, p. 23-37, 2001.
- FIGUEIREDO, F. M. R. *Evaluating core inflation measures for Brazil*. Banco Central do Brasil, March 2001. (Discussion Paper 14)

- FUHRER, J.; MOORE, G. Inflation persistence. *Quarterly Journal of Economics*, v. 110, p. 127-159, 1995.
- GAGNON, J. E. Long memory in inflation expectations: evidence from international financial markets. Board of Governors of the Federal Reserve, *International Finance Discussion Papers* n. 538. February 1996.
- GALÍ, J.; GERTLER, M. Inflation dynamics: a structural econometric analysis. *Journal of Monetary Economics*, v. 44, p. 195-222, 1999.
- GARCIA, R.; PERRON, P. An analysis of the real interest rate under regime shifts. *Review of Economics and Statistics*, v. 78, p. 111-125, 1996.
- GORDON, R. The time-varying NAIRU and its implications for economic policy. *NBER Working Paper*, n. 5735. August 1996.
- GRANT, A. P.; THOMAS, L. B. Inflationary expectations and rationality revisited. *Economic Letters*, v. 62, p. 331-338, 1999.
- GREENE, W. H. *Econometric analysis*. Fourth edition. New Jersey: Prentice Hall, 2000.
- HAMILTON, J. D. Analysis of time series subject to changes in regime. *Journal of Econometrics*, v. 45, p. 39-70, 1990.
- _____. *Time series analysis*. Princeton University Press, 1994.
- JOHANSEN, S. *Likelihood-based inference in cointegrated vector autoregressive models*. Oxford University Press, 1995.
- KIM, S. Do monetary policy shocks matter in G-7 countries? Using common identifying assumptions about monetary policy across countries. *Journal of International Economics*, v. 48, p. 387-412, 1999.
- KIM, C.-J.; NELSON, C. R. *State-space models with regime switching – Classical and Gibbs-sampling approaches with applications*. Cambridge: The MIT Press, 2000.
- KROLZIG, H.-M. *Econometric modelling of Markov-switching vector autoregressions using MSVAR for Ox*. Oxford: Nuffield College, 1998.
- LIMA, E. C. R. *The NAIRU, unemployment and the rate of inflation in Brazil*. Rio de Janeiro: Instituto Pesquisa Econômica Aplicada – IPEA, August 2000. (Discussion Paper n. 753).
- LOURENCO, R. A.; GRUEN, D. *Price stickiness and inflation*. Reserve Bank of Australia. March 1995. (Research Discussion Paper n. 9502).
- MANKIW, N. G.; REIS, R. *Sticky information versus sticky prices: a proposal to replace the new keynesian Phillips curve*. Harvard Institute of Economic Research. May 2001 (Discussion Paper n. 1922).

- MCCALLUM, B. *Comment*. NBER Macroeconomics Annual, p. 355-359, 1997.
- MINELLA, A. *Monetary policy and inflation in Brazil (1975-2000): a VAR estimation*. Banco Central do Brasil, November 2001 (Discussion Paper n. 33).
- MIO, H. The Phillips curve and underlying inflation. *Monetary and Economic Studies*, p. 85-107, May 2001.
- PASTORE, A. C. Déficit público, a sustentabilidade do crescimento das dívidas interna e externa, senhoriagem e inflação: uma análise do regime monetário brasileiro. *Revista de Econometria*, v. 14, n. 2, p. 177-234, Nov. 1994 – Mar. 1995.
- PHILLIPS, A. W. The relation between unemployment and the rate of change of money wage rates in the United Kingdom, 1861-1957. *Economica*, v. 25, November 1958.
- PORTUGAL, M. S.; MADALOZZO, R. C. Um modelo de NAIRU para o Brasil. *Revista de Economia Política*, v. 20, n. 4 (80), p. 26-47, out./dez., 2000.
- RAGAN, C. *Deriving agents' inflation forecasts from the term structure of interest rates*. Bank of Canada. January 1995 (Working Paper n. 95-1).
- ROBERTS, J. M. New keynesian economics and the Phillips curve. *Journal of Money, Credit and Banking*, v. 27, n. 4, parte I, p. 975-984, November 1995.
- _____. Is inflation sticky?. *Journal of Monetary Economics*, v. 39, p. 173-196, 1997.
- _____. Inflation expectations and the transmission of monetary policy. Board of Governors of the Federal Reserve, *Finance and Economics Discussion Series Paper n. 1998-43*, 1998.
- _____. How well does the new-keynesian sticky-price model fit the data. Board of Governors of the Federal Reserve, *Finance and Economics Discussion Series Paper n. 2001-13*, 2001.
- ROCHA, F. Long run limits on the Brazilian government debt. *Revista Brasileira de Economia*, n. 4, 1997.
- SARGENT, T. J. *Bounded rationality in macroeconomics*. Oxford University Press, 1993.
- _____. *The conquest of American inflation*. Princeton University Press, 1999.
- SCHOR, A.; BONOMO, M. A.; PEREIRA, P. L. V. *Arbitrage pricing theory (Apt) e variáveis macroeconômicas: um estudo empírico sobre o mercado acionário brasileiro*. Rio de Janeiro: Departamento de

- Economia da Pontifícia Universidade Católica do Rio de Janeiro, dez. 1998 (Textos para Discussão n° 391).
- SIMS, C. A. Interpreting the macroeconomic time series facts: the effects of monetary policy. *European Economic Review*, v. 36, p. 975-1000, 1992.
- SÖDERLIND, P. *Forward interest rates as indicators of inflation expectations*. Working Paper of the Institute for International Studies of the Stockholm University. May 1995.
- STAIGER, D.; STOCK, J. H.; WATSON, M. W. How precise are the estimates of the natural rate of unemployment? *NBER Working Paper*, n. 5477, March 1996.
- _____. Prices, wages and the U.S. NAIRU in the 1990s. *NBER Working Paper*, n. 8320, June 2001.
- TABAK, B. M.; ANDRADE, S. C. *Testing the expectation hypothesis in the Brazilian term structure of interest rates*. Banco Central do Brasil, November 2001 (Discussion Paper n. 30).
- TAYLOR, J. B. Aggregate dynamics and staggered contracts. *Journal of Political Economy*, v. 88, n. 1, p. 1-24, 1980.
- _____. Staggered wage and price setting in macroeconomics. In: TAYLOR, J. B.; WOODFORD, M. *Handbook of macroeconomics*. New York: North-Holland, 1999, cap. 15.
- TEJADA, C. A. O.; PORTUGAL, M. S. Credibility and reputation: an application of the “external circumstances” model for the Real Plan. In: XXVIII Encontro Brasileiro de Econometria, 18. Salvador, 2001. *Anais do XXVIII Encontro Brasileiro de Econometria*, v. II.
- WALSH, C. E. *Monetary theory and policy*. Massachusetts: MIT Press, 2000.

The views expressed here are solely the responsibility of the authors and do not reflect those of the Central Bank of Brazil or its members.

(Recebido em junho de 2003. Aceito para publicação em março de 2004).