

Understanding the two-dimensional ionization structure in luminous infrared galaxies

A near-IR integral field spectroscopy perspective[★]

Luis Colina^{1,2}, Javier Piqueras López^{1,2}, Santiago Arribas^{1,2}, Rogério Riffel³, Rogemar A. Riffel⁴, Alberto Rodríguez-Ardila⁵, Miriani Pastoriza³, Thaisa Storchi-Bergmann³, Almudena Alonso-Herrero⁶, and Dinalva Sales³

¹ Centro de Astrobiología (CAB, CSIC-INTA), Carretera de Ajalvir, 28850 Torrejón de Ardoz, Madrid, Spain
e-mail: colina@cab.inta-csic.es

² ASTRO-UAM, UAM, Unidad Asociada CSIC, Spain

³ Universidade Federal Rio Grande do Sul (UFRGS), 21941-901 Rio de Janeiro, Brazil

⁴ Departamento de Física, Centro de Ciências Naturais e Exatas, Universidade Federal de Santa Maria (UFSM), 97105-900 Santa Maria, RS, Brazil

⁵ Laboratorio Nacional de Astrofísica, 37530.000 Itajubá, Brazil

⁶ Instituto de Física de Cantabria, 39005 Santander, Spain

Received 22 December 2014 / Accepted 9 March 2015

ABSTRACT

We investigate the two-dimensional excitation structure of the interstellar medium (ISM) in a sample of luminous infrared galaxies (LIRGs) and Seyferts using near-IR integral field spectroscopy. This study extends to the near infrared the well-known optical and mid-IR emission line diagnostics used to classify activity in galaxies. Based on the spatially resolved spectroscopy of prototypes, we identify in the $[\text{FeII}]1.64 \mu\text{m}/\text{Br}\gamma - \text{H}_22.12 \mu\text{m}/\text{Br}\gamma$ plane regions dominated by the different heating sources, i.e. active galactic nuclei (AGNs), young main-sequence massive stars, and evolved stars i.e. supernovae. The ISM in LIRGs occupy a wide region in the near-IR diagnostic plane from -0.6 to $+1.5$ and from -1.2 to $+0.8$ (in log units) for the $[\text{FeII}]/\text{Br}\gamma$ and $\text{H}_2/\text{Br}\gamma$ line ratios, respectively. The corresponding median(mode) ratios are $+0.18(0.16)$ and $+0.02(-0.04)$. Seyferts show on average larger values by factors ~ 2.5 and ~ 1.4 for the $[\text{FeII}]/\text{Br}\gamma$ and $\text{H}_2/\text{Br}\gamma$ ratios, respectively. New areas and relations in the near-IR diagnostic plane are defined for the compact, high surface brightness regions dominated by AGN, young ionizing stars, and supernovae explosions, respectively. In addition to these high surface brightness regions, the diffuse regions affected by the AGN radiation field cover an area similar to that of Seyferts, but with high values in $[\text{FeII}]/\text{Br}\gamma$ that are not as extreme. The extended, non-AGN diffuse regions cover a wide area in the near-IR diagnostic diagram that overlaps that of individual excitation mechanisms (i.e. AGN, young stars, and supernovae), but with its mode value to that of the young star-forming clumps. This indicates that the excitation conditions of the extended, diffuse ISM are likely due to a mixture of the different ionization sources, weighted by their spatial distribution and relative flux contribution. The integrated line ratios in LIRGs show higher excitation conditions i.e. towards AGNs, than those measured by the spatially resolved spectroscopy. If this behaviour is representative, it would have clear consequences when classifying high- z , star-forming galaxies based on their near-infrared integrated spectra.

Key words. galaxies: general – galaxies: evolution – galaxies: starburst – galaxies: structure – galaxies: Seyfert – infrared: galaxies

1. Introduction

The characterization of the excitation and ionization conditions of the interstellar medium (ISM) plays a central role in our understanding of galaxy formation and evolution across the history of the Universe. Galaxies are known to have different excitation/heating sources ranging from luminous accretion disks around nuclear massive black holes (AGNs), to powerful, spatially distributed starbursts. In general, galaxies show a complex excitation/ionization, two-dimensional structure due to their different radiation field (stars versus AGNs), the presence of local (radio jets, stellar and supernovae winds) or galaxy-wide (tidally-induced) shocks, internal dust clumpiness, and metallicity effects (radial gradients, overall abundances). Thus, the use of

strong emission lines for the detection and quantification of the ionization sources in galaxies was identified early on as an important tool. The pioneering methodology of Baldwin, Phillips, and Terlevich (BPT; Baldwin et al. 1981), based on the use of the strongest optical emission lines, has been commonly used ever since to identify and separate active galactic nucleus (AGN) from star formation (Veilleux & Osterbrock 1987; Kewley et al. 2001; Yuan et al. 2010) to define empirical limits based on large samples of galaxies (Kauffmann et al. 2003) or theoretical limits based on detailed models (Kewley et al. 2006, 2013). The advent of infrared satellites like ISO and *Spitzer* has also made it possible to define BPT-like diagnostics (Genzel et al. 1998; Spoon et al. 2007; Groves et al. 2008; Bernard-Salas et al. 2009; Dale et al. 2009; Pereira-Santaella et al. 2011; Petric et al. 2011; Alonso-Herrero et al. 2012) based on strong mid-IR lines that are tracers of AGNs (i.e. high excitation lines like $[\text{NeV}]14.32 \mu\text{m}$

[★] Appendix A is available in electronic form at <http://www.aanda.org>

or [OIV]25.89 μm) and star formation (polycyclic aromatic hydrocarbons at 6.2, 7.7 and 11.3 μm).

The study of the excitation and ionization of ISM in active galaxies using near-IR emission lines has been more limited. A BPT-like near-IR diagram involving the [FeII]1.26 $\mu\text{m}/\text{Pa}\beta$ and the H_2 2.12 $\mu\text{m}/\text{Br}\gamma$ line ratios was originally proposed by Larkin et al. (1998) in a study of LINERs based on low spectral resolution ($R \sim 1000$) near-IR long-slit spectroscopy. Larkin and coworkers reported a strong linear relation in the (log–log) [FeII]1.26 $\mu\text{m}/\text{Pa}\beta$ – H_2 2.12 $\mu\text{m}/\text{Br}\gamma$ plane, with star-forming galaxies showing the lowest ratios, Seyferts with intermediate ratios, and LINERs with the highest ratios. Later studies of Seyfert 1 and Seyfert 2 galaxies (Rodríguez-Ardila et al. 2004, 2005; Riffel et al. 2006) confirmed the trend first reported by Larkin and coworkers. A more recent analysis on a larger compilation of Seyfert 1 and 2 galaxies, including star-forming galaxies and a few LINERs (Riffel et al. 2013a), have shown that activity in galaxies seems to follow a unique linear relation $\log([\text{FeII}]1.26 \mu\text{m}/\text{Pa}\beta) = 0.749 \times \log(\text{H}_22.12 \mu\text{m}/\text{Br}\gamma) - 0.207$, with star-forming galaxies showing the lowest ratios and LINERs apparently the largest.

The ionization of the ISM in luminous and ultraluminous infrared galaxies (LIRGs and ULIRGs, respectively) shows a complex behaviour in the optical with the largest fraction of galaxies classified as star forming, a large fraction (30% to 40%) as LINERs, and a few as AGNs (Veilleux et al. 1995, 1999). The nature of LINERs in U/LIRGs has been explained as the consequence of galaxy-wide merger-driven shocks (Monreal-Ibero et al. 2006, 2010; Rich et al. 2011, 2013), but other alternatives like a mixture of starbursts and AGN have also been invoked (Kewley et al. 2001; Yuan et al. 2010; Kewley et al. 2013). The study of U/LIRGs in the optical includes additional complications derived by the amount and clumpy nature of their dust distribution, and by the presence of additional heating mechanisms due to the tidal forces associated with the interactions and mergers involved mostly in ULIRGs.

A more appropriate methodology for the study of the ionization/excitation conditions of the ISM in U/LIRGs could be the use of near-infrared spatially resolved spectroscopy, i.e. near-IR integral field spectroscopy (IFS). This allows the investigation of the low- A_V , transparent ionized regions (as in the optical) and the more dust-enshrouded star-forming regions and/or obscured AGNs. These type of studies will set the ground for future studies with the near-IR (NIRSpec) and mid-IR (MIRI) integral field spectrographs onboard the *James Webb* Space Telescope (JWST). Future observatories such as JWST will allow us to spatially resolve the high-redshift, infrared-luminous, star-forming galaxies (main sequence and above), establishing and quantifying the nature of their heating/ionizing sources.

This paper presents the first spatially resolved near-infrared spectroscopic study of the excitation conditions of the ISM in a sample of low-redshift LIRGs complemented with similar data from a sample of nearby Seyfert galaxies. Section 2 introduces the samples and near-IR integral field spectroscopic data. The two-dimensional distribution of the ISM in LIRGs according to their [FeII]/Br γ and $\text{H}_2/\text{Br}\gamma$ ratios is given in Sects. 3.1, 3.2 and 3.3.1. The location of compact young star-forming regions, supernovae- and AGN-dominated, and composite starbursts+AGN in the [FeII]/Br γ – $\text{H}_2/\text{Br}\gamma$ plane are based on galaxies identified as prototypes, and is presented in Sects. 3.3.2 to 3.3.5. A discussion about possible aperture effects in the classification of galaxies when comparing flux-weighted one-dimensional with two-dimensional spatially distributed classifications is given (Sect. 3.3.6). Finally, new limits and relations

Table 1. LIRG sample.

ID1 common (1)	ID2 IRAS (2)	z (3)	D_L (Mpc) (4)	Scale (pc'') (5)	$\log(L_{\text{IR}}/L_{\odot})$ (6)
NGC 2369	IRAS 07160-6215	0.010807	48.6	230	11.17
NGC 3110	IRAS 10015-0614	0.016858	78.4	367	11.34
NGC 3256	IRAS 10257-4338	0.009354	44.6	212	11.74
ESO 320-G030	IRAS 11506-3851	0.010781	51.1	242	11.35
IRAS F 12115-4656	IRAS 12115-4657	0.018489	84.4	394	11.10
NGC 5135	IRAS 13229-2934	0.013693	63.5	299	11.33
IRAS F 17138-1017	IRAS 17138-1017	0.017335	75.3	353	11.42
IC 4687	IRAS 18093-5744	0.017345	75.1	352	11.44
NGC 7130	IRAS 21453-3511	0.016151	66.3	312	11.34
IC 5179	IRAS 22132-3705	0.011415	45.6	216	11.12

Notes. Column (3): redshift from the NASA Extragalactic Database (NED). Columns (4) and (5): luminosity distance and scale derived using Ned Wright’s Cosmology Calculator (Wright 2006) given $h_0 = 0.70$, $\Omega_M = 0.7$, $\Omega_{\Lambda} = 0.3$. Column (6): $L_{\text{IR}}(8\text{--}1000 \mu\text{m})$ calculated from the IRAS flux densities f_{12} , f_{25} , f_{60} and f_{100} (Sanders et al. 2003), using the expression given in Sanders & Mirabel (1996). A complete version of this table can be found in Piqueras López et al. (2012).

in the (log–log) [FeII]/Br γ versus $\text{H}_2/\text{Br}\gamma$ plane are proposed to discriminate the different excitation associated with young and aged stars, AGNs, and composite objects (Sect. 3.3.7).

2. Samples of galaxies and observations

2.1. Luminous infrared galaxies

The sample of galaxies (see Table 1) consists of ten low- z LIRGs located at distances of ~ 45 to 85 Mpc, and covering the IR-luminosity range of 11.1 to 11.7 L_{\odot} ($\log L_{\text{IR}}$). Most galaxies are classified as pure star forming, while only two (NGC 5135 & NGC 7130) are identified as hosting an AGN in their nucleus in addition. We obtained spectra for all galaxies with the near-infrared integral field spectrograph SINFONI on the VLT, using the seeing-limited mode, and a resolving power of about 3000 and 4000 for the H and K bands, respectively. For each galaxy, we generated absolute calibrated maps for the H_2 2.12 μm , Br γ , and [FeII] 1.64 μm emission lines, tracing the distribution of the hot molecular, warm ionized, and partially ionized gas, respectively. The overall field-of-view ($\sim 8 \times 8 \text{ arcsec}^2$) covers distances of 1 to 1.5 kpc radius around the nucleus of the galaxy with a sampling of about 30 to 50 parsec (0.125 arcsec/spaxel), and a physical resolution of about 200 parsec ($FWHM \sim 0.6 \text{ arcsec}$). Full details of the sample observations, basic reduction, and calibration can be found in Piqueras López et al. (2012).

We included some improvements in the reduction and calibration process of our SINFONI data, as explained in detail elsewhere (Piqueras López et al., in prep.). We implemented different techniques to reduce the spectral and spatial noise of the individual observations, and to match the background of the individual cubes before coadding the final data cube. After the new calibration of the data set, we obtained new emission line maps, following the same procedure as described in Piqueras López et al. (2012). As a consequence of the new reduction process, the relative calibration between H - and K -band data cubes might be slightly different when compared with previous published measurements. In the worst case scenario, the differences between the 2012 absolute calibration and the calibration that we present could be as high as 20% on each band. However, on average, the uncertainty of the absolute flux calibration lies below $\leq 15\%$ on both bands. Therefore, we assumed a conservative 15%

systematic error for all flux measurements, added in quadrature to the statistical error.

To obtain extinction-corrected flux maps, we applied the spatially resolved internal A_V measurements from Piqueras López et al. (2013). These measurements are derived from the $\text{Br}\gamma/\text{Br}\delta$ line ratio and the extinction law from Calzetti et al. (2000), and are available on a spaxel-by-spaxel basis for those spaxels where the $\text{Br}\delta$ line is detected beyond a signal-to-noise ratio (S/N) threshold of 4 (see Piqueras López et al. 2013, for further details). In those spaxels where the correction is not available, the median value of the A_V distribution is used for each individual galaxy. Strictly speaking, the use of Calzetti’s law has to be applied by deriving the A_V for the stellar continuum first and then the extinction towards the ionized gas using the empirically (UV-optical) derived ratio $A_V(\text{continuum})/A_V(\text{ionized gas}) = 0.44$. However, while extinction laws differ in the ultraviolet and optical, there are similar extinction laws in the near infrared. For example, the differences (in magnitudes) between Cardelli et al. (1989) and Calzetti’s laws for the wavelengths of the $\text{Pa}\alpha$, $\text{Br}\delta$, and $\text{Br}\gamma$ emission lines correspond to 0.00193, 0.00658, and $0.02037 \times A_V$ respectively.

We obtained integrated measurements of the line ratios on different regions of interest, i.e. the peaks of the emission lines, $[\text{FeII}]1.64 \mu\text{m}$, H_2 1-0S(1) and $\text{Br}\gamma$, the main nucleus of the objects, and integrated measurements over the field of view (FoV). The peak of each line is defined as the brightest spaxel on the corresponding emission line map. For consistency with our previous work, we consider the nucleus of the galaxy as the brightest spaxel of the K -band continuum map. Centred on the peaks, we defined a circular aperture of 200 pc radius to obtain an integrated spectrum of each region. The spaxel-by-spaxel spectra within the aperture are de-rotated i.e. shifted to the same reference frame in the spectral axis before staking (Piqueras López et al., in prep.). This procedure increases the S/N of the lines by de-correlating the noise in the spectral dimension, since possible residuals from the sky line subtraction are no longer aligned. It also corrects from the artificial line broadening due to the intrinsic velocity field that arises from staking over wide apertures. After the spectra are extracted, we individually fitted the different emission lines (i.e. $[\text{FeII}]$, H_2 , $\text{Br}\gamma$ and $\text{Br}\delta$) using a Gaussian profile on a spaxel-by-spaxel basis (see Piqueras López et al. 2012, for details), and obtained the corresponding line fluxes and A_V measurements using the $\text{Br}\gamma/\text{Br}\delta$ line ratio. Examples of spectra can be found in Piqueras López et al. (2012). The $[\text{FeII}]1.644 \mu\text{m}$ emission line flux could potentially be affected by the $\text{Br}12$ $1.641 \mu\text{m}$ line in absorption. However, these two lines are well resolved in our $R \sim 4000$ spectra and therefore no major impact on the strong $[\text{FeII}]$ emission is expected (see Bedregal et al. 2009, for examples of the H -band spectra for NGC 5135).

The final uncertainties on the line fluxes and extinction measurements are calculated using a bootstrap method of typically ~ 500 simulations of each spectrum. This method consists of constructing a set of spectra that are statistically equivalent in terms of noise to the observed spectrum. We measured the noise of each observed spectrum as the rms of the residuals after subtraction of the Gaussian profile at each line position. Taking this estimation of the noise into account, we constructed a total of ~ 500 simulated spectra where the lines are fitted again. We then obtained distributions of each parameter of the fitting (e.g. flux, line position/velocity, and σ), and calculated their corresponding uncertainties as the standard deviation of each distribution. The main advantage of this technique is that it not only takes the photon noise into account, but also uncertainties due

Table 2. Seyfert and star-forming galaxy samples.

ID1 Common (1)	ID2 IRAS (2)	z (3)	D_L (Mpc) (4)	Scale (pc'') (5)
Mrk 1157	IRAS 01306+3524	0.015167	61.8	291
Mrk 1066	IRAS 02568+3637	0.012025	49.2	233
ESO 428-G014	IRAS 07145-2914	0.005664	27.1	130
Mrk 79	IRAS 07388+4955	0.022189	98.3	456
NGC 4151	IRAS Z12080+3940	0.003319	17.8	86
NGC 693	IRAS 01479+0553	0.005227	18.3	88
UGC 2855	IRAS 03431+6958	0.004003	15.9	77
NGC 1569W	IRAS 04260+6444	-0.000347	1.45	7
M82	IRAS 09517+6954	0.000677	4.03	19
NGC 4303	IRAS 12194+0444	0.005224	27.5	131
Mrk 59	IRAS 12566+3507	0.002616	14.7	71
NGC 7771	IRAS 23488+1949	0.014267	56.6	267

Notes. Column (3): redshift from the NASA Extragalactic Database (NED). Columns (4) and (5): Luminosity distance and scale derived using Ned Wright’s Cosmology Calculator (Wright 2006) given $h_0 = 0.70$, $\Omega_M = 0.7$, $\Omega_M = 0.3$.

to an inaccurate continuum estimation or poor line fitting in low S/N spectra.

2.2. Nearby Seyfert galaxies

The LIRG sample has been complemented with a small sample of nearby Seyfert galaxies (see Table 2) for which high spectral resolution ($R \sim 5000$) near-IR IFS data obtained with NIFS/Gemini are already available. The sample consists of three Seyfert 2 galaxies (Mrk 1066 & Mrk 1157; Riffel & Storchi-Bergmann 2011a,b; ESO428-G014, Riffel et al. 2006), one Seyfert 1.5 galaxy (NGC 4151, Storchi-Bergmann et al. 2009), and one Seyfert 1 galaxy (Mrk 79, Riffel et al. 2013b). These data cover regions of 300 to 700 parsec (radius) around the AGN with an angular resolution from about 10 parsec (ESO428-G014 and NGC 4151) up to about 100 parsec (Mrk 79). One of the Seyferts (Mrk 1066), while dominated by the AGN in the central regions, also has circumnuclear star-forming knots within the central 400 pc around the nucleus (Riffel & Storchi-Bergmann 2011a; Ramos Almeida et al. 2014).

The $[\text{FeII}]1.64 \mu\text{m}/\text{Br}\gamma$ line ratios for the Seyfert sample are derived from the original $[\text{FeII}]\lambda 1.26 \mu\text{m}$ and $\text{Pa}\beta$ line emission maps. To calculate the $[\text{FeII}]\lambda 1.64 \mu\text{m}/\text{Br}\gamma$ line ratio from the $[\text{FeII}]\lambda 1.26 \mu\text{m}/\text{Pa}\alpha\beta$, we assumed the theoretical ratio $[\text{FeII}]\lambda 1.64 \mu\text{m}/[\text{FeII}]\lambda 1.26 \mu\text{m} = 0.7646$ (see e.g. Colina 1993), and the case B recombination factors at $T = 10000$ K and $n_e = 10^4 \text{cm}^{-3}$ (Osterbrock & Ferland 2006). Therefore, $[\text{FeII}]1.64 \mu\text{m}/\text{Br}\gamma = 4.4974 \times [\text{FeII}]1.26 \mu\text{m}/\text{Pa}\beta$. Since the emission lines used in the original line ratios lie very closed in wavelength, no correction for internal extinction effects has been applied to the Seyferts.

2.3. Nearby star-forming galaxies

There are a few nearby star-forming galaxies with published near-IR IFS. These are included in the analysis for a direct comparison of the excitation properties of the brightest compact emitting regions in LIRGs with the nucleus and star-forming clumps in pure star-forming galaxies. The sample (see Table 2) includes the nucleus, two off-nucleus regions (35×35 parsec, each), and the central (260×160 parsec) region in M82

Table 3. [FeII]1.64 μm /Bry line ratio for all LIRGS. Statistical results from SINFONI/IFS measurements.

Object	Median		Mode		Mean		σ		P_5		P_{95}		N_{spaxel}
	Obs	Corr	Obs	Corr	Obs	Corr	Obs	Corr	Obs	Corr	Obs	Corr	
NGC 2369	0.61	3.58	0.80	4.02	0.63	3.99	0.23	2.36	0.31	1.40	1.04	7.92	1583
NGC 3110	0.72	1.59	0.69	1.73	0.77	1.66	0.23	0.51	0.49	0.96	1.18	2.60	2719
NGC 3256	1.06	1.69	0.96	1.82	1.13	2.05	0.39	1.46	0.61	0.79	1.85	4.64	5553
ESO320-G030	0.89	1.37	0.91	1.32	0.91	1.46	0.22	0.52	0.57	0.84	1.30	2.32	4011
IRASF 12115-4656
NGC 5135 (all)	0.95	1.89	1.07	1.44	1.21	2.59	0.99	2.25	0.49	1.02	3.24	7.43	1610
NGC 5135 ([SiVI]) ^a	1.06	2.29	1.07	1.96	1.40	3.03	1.13	2.40	0.48	1.06	4.09	8.32	898
NGC 5135 (no [SiVI]) ^b	0.80	1.53	0.67	1.37	0.98	2.03	0.71	1.92	0.50	0.97	2.32	4.93	712
IRASF 17138-1017	1.05	2.00	1.14	2.08	1.07	2.08	0.36	0.90	0.53	0.83	1.68	3.81	2327
IC 4687	0.95	1.60	1.05	1.76	0.97	1.82	0.36	1.01	0.49	0.69	1.55	3.87	4212
NGC 7130 (all)	1.18	1.96	0.93	2.01	1.42	3.27	0.85	4.12	0.50	0.75	3.17	10.36	1857
NGC 7130 ([SiVI]) ^a	2.08	4.60	2.03	4.60	2.20	6.83	0.87	6.29	0.89	1.82	3.86	21.49	498
NGC 7130 (no [SiVI]) ^b	0.96	1.51	0.94	1.24	1.13	1.96	0.63	1.53	0.49	0.71	2.44	4.77	1359
IC 5179	0.55	0.82	0.54	0.85	0.58	0.94	0.18	0.63	0.36	0.42	0.92	1.72	4490
LIRGs	0.87	1.53	0.95	1.46	0.94	1.94	0.49	1.75	0.43	0.62	1.72	4.53	28362

Notes. Columns indicate statistical results for the distribution of the observed ratios (obs), and of the extinction corrected values (corr). Last column (N_{spaxels}) gives the number of spaxels for each galaxy. ^(a) Statistics using only the spaxels where [SiVI]1.96 μm emission line has been detected. ^(b) Statistics using all the spaxels within the field-of-view with no [SiVI]1.96 μm emission line detected.

Table 4. H₂ 2.12 μm /Bry line ratio for all LIRGS. Statistical results from SINFONI/IFS measurements.

Object	Median		Mode		Mean		σ		P_5		P_{95}		N_{spaxel}
	Obs	Corr	Obs	Corr	Obs	Corr	Obs	Corr	Obs	Corr	Obs	Corr	
NGC 2369	1.08	1.21	1.18	1.32	1.19	1.33	0.59	0.66	0.55	0.60	2.30	2.57	1583
NGC 3110	0.80	0.84	0.80	0.80	0.85	0.89	0.33	0.34	0.43	0.46	1.46	1.53	2719
NGC 3256	1.00	1.04	1.09	1.28	1.20	1.24	0.82	0.84	0.33	0.34	2.90	2.96	5553
ESO320-G030	0.74	0.76	0.69	0.69	0.99	1.02	0.84	0.86	0.35	0.36	2.46	2.53	4011
IRASF 12115-4656	0.69	0.73	0.74	0.74	0.73	0.77	0.25	0.26	0.39	0.41	1.20	1.25	3526
NGC 5135 (all)	1.31	1.37	1.88	1.88	1.45	1.52	0.84	0.87	0.48	0.50	2.89	3.01	1610
NGC 5135 ([SiVI]) ^a	1.46	1.53	1.99	1.98	1.54	1.61	0.76	0.79	0.55	0.58	2.82	2.91	898
NGC 5135 (no [SiVI]) ^b	1.09	1.14	0.68	0.80	1.34	1.40	0.92	0.95	0.44	0.46	2.93	3.06	712
IRASF 17138-1017	0.65	0.68	0.58	0.93	0.76	0.79	0.45	0.47	0.22	0.23	1.61	1.68	2327
IC 4687	0.540	0.56	0.61	0.61	0.57	0.59	0.29	0.31	0.17	0.18	1.13	1.17	4212
NGC 7130 (all)	1.05	1.10	1.11	1.11	1.42	1.47	1.24	1.28	0.26	0.27	4.20	4.33	1857
NGC 7130 ([SiVI]) ^a	1.79	1.88	1.23	1.22	2.31	2.42	1.42	1.44	0.95	1.06	5.15	5.31	498
NGC 7130 (no [SiVI]) ^b	0.76	0.79	0.61	1.11	1.09	1.12	0.98	1.01	0.23	0.24	3.12	3.21	1359
IC 5179	0.71	0.73	0.84	0.84	0.78	0.80	0.37	0.38	0.32	0.33	1.46	1.49	4490
LIRGs	0.77	0.80	0.79	0.67	0.97	1.01	0.73	0.75	0.29	0.30	2.30	2.38	31888

Notes. Columns indicate statistical results for the distribution of the observed ratios (obs) and of the extinction corrected values (corr). Last column (N_{spaxels}) gives the number of spaxels for each galaxy. ^(a) Statistics using only the spaxels where [SiVI]1.96 μm emission line has been detected. ^(b) Statistics using all the spaxels within the field-of-view with no [SiVI]1.96 μm emission line detected.

(Förster Schreiber et al. 2001), as well as one low-metallicity blue compact dwarf galaxy (Mrk 59, Izotov et al. 2009) and a small sample of nearby star-forming galaxies (NGC 1569W, NGC 693, UGC 2855, and NGC 7771; Dale et al. 2004), covering several morphologies and metallicities. For all these galaxies, we obtained the [FeII]/Bry and H₂/Bry line ratios from the published line fluxes for the different regions corrected by the specific internal extinction given in these works.

In addition to these galaxies from the literature, the line ratios for the nucleus and a circumnuclear UV-luminous star cluster (cluster G in Colina et al. 2002) in the galaxy NGC 4303, located in the Virgo cluster, are also included. The nucleus of this galaxy, optically classified as LINER – low-luminosity Seyfert 2 (Colina & Arribas 1999), contains a massive ($10^5 M_{\odot}$),

UV-luminous, 4 Myr old star cluster (Colina et al. 2002), and a hard X-ray emitting low-luminosity AGN (Jiménez-Bailón et al. 2003).

3. Results

We generated maps for the observed Bry, H₂2.12 μm , and [FeII]1.64 μm emission for each individual LIRG. Spatial information is typically available for a few to several thousands of spaxels per galaxy with a total number of over 28 000 spaxels for all LIRGs in the sample. Since internal extinction is very clumpy in LIRGs and shows a wide range of values (Piqueras López et al. 2013), we performed subsequent analysis of the line ratios after applying an internal extinction correction on a per-spaxel

Table 5. [FeII]1.64 $\mu\text{m}/\text{Br}\gamma$ line ratio for Seyferts. Statistical results from NIFS/IFS measurements.

Object	Median	Mode	Mean	σ	P_5	P_{95}	N_{spaxel}
Mrk 1157	5.43	4.99	7.05	5.67	1.43	18.63	868
Mrk 1066	3.61	3.49	3.70	1.16	1.97	5.81	1092
ESO 428-G014	4.15	4.62	4.34	1.21	2.83	6.91	60
Mrk 79	2.80	3.46	4.48	5.53	0.73	15.47	1395
NGC 4151	4.30	4.43	4.56	2.15	1.68	8.50	421
Seyferts	3.67	3.98	4.85	4.57	1.00	13.24	3836

Notes. Derived from the original [FeII]1.26 μm and Pa β ratios without further correction for internal extinction (see Sect. 2.1).

Table 6. H₂ 2.12 $\mu\text{m}/\text{Br}\gamma$ line ratio for Seyferts. Statistical results from NIFS/IFS measurements.

Object	Median	Mode	Mean	σ	P_5	P_{95}	N_{spaxel}
Mrk 1157	1.71	1.58	2.25	2.07	0.50	5.62	868
Mrk 1066	1.07	1.32	1.13	0.47	0.46	1.98	1092
ESO 428-G014	1.07	1.12	1.16	0.40	0.66	2.16	60
Mrk 79	1.96	2.04	2.14	1.10	0.76	4.37	1395
NGC 4151	0.52	0.38	0.78	0.69	0.23	1.99	421
Seyferts	1.41	1.54	1.71	1.36	0.40	4.00	3836

basis for a large fraction of spaxels (64%) with a good determination of the A_V based on the Br $\delta/\text{Br}\gamma$ ratio. For the rest of spaxels in each galaxy, the median value of the corresponding distribution is applied. The results for each LIRG as well as for the entire sample are given in Tables 3 and 4 for the [FeII]1.64 $\mu\text{m}/\text{Br}\gamma$ and H₂2.12 $\mu\text{m}/\text{Br}\gamma$ ratios, respectively.

In addition to the maps, we also calculated the [FeII]1.64 $\mu\text{m}/\text{Br}\gamma$ and H₂2.12 $\mu\text{m}/\text{Br}\gamma$ line ratios in each galaxy for a few high surface brightness regions, mainly the nucleus of the galaxy identified as the photometric peak in the SINFONI K-band line-free continuum, and the emission peaks of the ionized, partially-ionized, and hot molecular gas components as traced by the Br γ , the [FeII]1.64 μm , and the H₂ 2.12 μm lines respectively (see Tables 7 and 8). Finally, the flux-weighted line ratios over the entire FOV are also given for a direct comparison with one-dimensional ratios for large sample of galaxies.

We obtained the corresponding emission line ratios for the sample of Seyfert galaxies from the original NIFS emission line maps (see Sect. 2.2), following the [FeII]1.26 $\mu\text{m}/\text{Pa}\beta$ to [FeII]1.64 $\mu\text{m}/\text{Br}\gamma$ as explained in Sect. 2.2 (see Tables 5 and 6 for results).

3.1. The characterization of the ISM in LIRGs according to [FeII]1.64 $\mu\text{m}/\text{Br}\gamma$ ratio

The two-dimensional distribution of the ISM in LIRGs are characterized by an observed (median) [FeII]1.64 $\mu\text{m}/\text{Br}\gamma$ ratio of about 0.9 that translates into an (spaxel-by-spaxel) extinction corrected ratio of about 1.5. Except for a galaxy (NGC 2369) that appears to be edge-on and heavily absorbed, the extinction-corrected 2D distributions appear as quasi-universal, i.e. has no dependence with galaxy, showing a narrow range of values with most regions clustering within factors less than 2 from the median. There are four galaxies where only for specific regions, the extinction corrected [FeII]1.64 $\mu\text{m}/\text{Br}\gamma$ ratio is above 5 (see Table 7). These correspond to the nuclei of NGC 7130 (Seyfert 2) and NGC 3110, to the luminous circumnuclear

[FeII] clump in NGC 5135 (Colina et al. 2012), and to the overall circumnuclear emission in the edge-on galaxy NGC 2369.

Starburst models, based purely on the number of ionizing photons and the [FeII] emission associated with the expected supernova rate, predict [FeII]1.64 $\mu\text{m}/\text{Br}\gamma$ ratios between 0.1 and 1.4 for a continuous star formation characterized by different IMFs (Colina 1993). According to these models, only star formation with relative steep IMFs (Salpeter or steeper) and low upper-mass limit ($\sim 25\text{--}30 M_\odot$), would be able to produce [FeII]1.64 $\mu\text{m}/\text{Br}\gamma$ ratios of about 1. This situation is unlikely and other effects not taken into account in these models like supernova-induced shocks and X-ray emission in aging instantaneous bursts, or contamination by the radiation & shocks from an AGN, could be playing a relevant role. In fact, our Seyfert galaxies have typical ratios (median and mode) that are 2.6 times larger than those of LIRGs, indicating that the additional excitation mechanisms associated with AGNs, i.e. X-rays and shocks, could enhance the emission of [FeII] with respect to the Br γ even in the highly ionized environments around the AGN.

3.2. The characterization of the ISM in LIRGs according to the H₂/Br γ ratio

The ISM in LIRGs is characterized by a (median) H₂/Br γ ratio of about 0.8 (see Table 4 for details). This ratio is typically a factor $\sim 1.8\text{--}2$ lower than the corresponding ratios for Seyferts (see Table 6). In addition, while Seyferts cover a wide range of H₂/Br γ values from about 0.4 to 4.0, LIRGs share similar lower limits (0.3 for LIRGs) but have an upper limit of about 2.4 (95% of spaxels are below this value, see Table 4). This suggests that the excitation mechanism is such that it transitions from LIRGs to Seyferts, i.e. from star-forming dominated galaxies (seven out of nine LIRGs) to AGN-dominated galaxies. In fact, the H₂/Br γ values are consistent with those of Seyferts for the coronal [SiVI] emitting regions in the two LIRGs (NGC 5135 and NGC 1730) where this high-excitation AGN tracer has been detected (see Table 4). For these two galaxies, the H₂/Br γ ratio in the [SiVI] emitting regions is about 1.5–2 times higher than in the [SiVI] non-emitting regions.

Table 7. [FeII]1.64 μm /Bry line ratios for LIRGs. Values for emission line peaks and integrated measurements.

Object	Integrated		Nucleus		HII peak		H ₂ peak		[FeII] peak	
	Obs.	Corr	Obs.	Corr	Obs.	Corr	Obs.	Corr	Obs.	Corr
NGC 2369 ^{a,b}	1.26 ± 0.22	5.33 ± 5.27	0.81 ± 0.06	2.49 ± 0.98	0.83 ± 0.06	2.42 ± 0.89	0.84 ± 0.06	2.49 ± 0.93	1.16 ± 0.10	4.72 ± 2.35
NGC 3110 ^{b,c}	0.76 ± 0.09	3.44 ± 1.38	0.76 ± 0.09	5.90 ± 5.97	0.56 ± 0.05	0.99 ± 0.31	0.76 ± 0.09	6.14 ± 6.21	0.75 ± 0.09	4.76 ± 13.03
NGC 3256
ESO 320-G030	0.95 ± 0.11	2.36 ± 1.11	1.34 ± 0.60	3.32 ± 2.12	0.74 ± 0.06	1.57 ± 0.53	1.31 ± 0.68	1.96 ± 2.20	1.30 ± 0.54	3.21 ± 1.98
IRASF 12115-4656 ^{a,b}
NGC 5135 ^b	1.10 ± 0.10	2.79 ± 1.27	1.03 ± 0.06	1.86 ± 0.67	0.74 ± 0.03	1.43 ± 0.34	1.03 ± 0.06	1.86 ± 0.67	3.74 ± 0.15	7.71 ± 3.09
IRASF 17138-1017 ^b	0.92 ± 0.04	1.58 ± 0.42	1.03 ± 0.03	1.92 ± 0.85	0.55 ± 0.01	0.69 ± 0.11	1.03 ± 0.03	1.92 ± 0.85	0.61 ± 0.01	0.98 ± 0.16
IC 4687 ^d	0.85 ± 0.04	1.23 ± 0.18	0.93 ± 0.06	2.07 ± 0.63	0.43 ± 0.02	0.61 ± 0.07	1.05 ± 0.08	2.08 ± 0.72	0.47 ± 0.02	0.66 ± 0.08
NGC 7130 ^{a,b,c}	1.31 ± 0.09	3.77 ± 3.65	2.44 ± 0.11	5.14 ± 3.90	2.40 ± 0.11	5.11 ± 3.87	2.48 ± 0.11	5.20 ± 4.01	2.44 ± 0.11	5.14 ± 3.90
IC 5179 ^{a,b,c}	0.62 ± 0.06	0.97 ± 0.38	0.70 ± 0.05	1.20 ± 0.23	0.68 ± 0.05	1.10 ± 0.21	0.70 ± 0.05	1.14 ± 0.22	0.68 ± 0.05	1.08 ± 0.20

Notes. [FeII]/Bry integrated measurements of regions of interest. Observed (obs) and extinction corrected (corr) values are given. ^(a) Nucleus and HII peak are coincident. ^(b) Nucleus and H₂ peak are coincident. ^(c) Nucleus and [FeII] peak are coincident. ^(d) HII and [FeII] peaks are coincident.

Table 8. H₂ 2.12 μm /Bry line ratios for LIRGs. Values for emission line peaks and integrated measurements.

Object	Integrated		Nucleus		HII peak		H ₂ peak		[FeII] peak	
	Obs.	Corr	Obs.	Corr	Obs.	Corr	Obs.	Corr	Obs.	Corr
NGC 2369 ^{a,b}	1.10 ± 0.14	1.21 ± 0.78	0.72 ± 0.04	0.77 ± 0.20	0.72 ± 0.04	0.77 ± 0.18	0.73 ± 0.04	0.78 ± 0.19	0.95 ± 0.04	1.04 ± 0.33
NGC 3110 ^{b,c}	0.82 ± 0.04	0.90 ± 0.23	0.72 ± 0.04	0.82 ± 0.53	0.62 ± 0.02	0.65 ± 0.13	0.71 ± 0.04	0.82 ± 0.53	0.70 ± 0.04	0.79 ± 1.39
NGC 3256
ESO 320-G030	0.88 ± 0.05	0.93 ± 0.28	5.47 ± 0.46	5.81 ± 1.77	0.46 ± 0.03	0.49 ± 0.11	5.90 ± 0.55	6.26 ± 1.92	4.74 ± 0.36	5.03 ± 1.52
IRASF 12115-4656 ^{a,b}	0.84 ± 0.08	0.95 ± 0.84	1.69 ± 0.19	1.92 ± 1.70	1.66 ± 0.19	1.88 ± 1.67	1.69 ± 0.19	1.92 ± 1.70
NGC 5135 ^b	1.29 ± 0.07	1.37 ± 0.40	1.70 ± 0.06	1.76 ± 0.41	0.60 ± 0.02	0.62 ± 0.10	1.70 ± 0.06	1.76 ± 0.41	1.62 ± 0.08	1.70 ± 0.44
IRASF 17138-1017 ^b	0.47 ± 0.02	0.49 ± 0.08	0.49 ± 0.02	0.52 ± 0.15	0.16 ± 0.01	0.17 ± 0.02	0.49 ± 0.02	0.52 ± 0.15	0.26 ± 0.01	0.27 ± 0.03
IC 4687 ^d	0.38 ± 0.01	0.39 ± 0.04	0.56 ± 0.02	0.59 ± 0.12	0.13 ± 0.01	0.14 ± 0.01	0.68 ± 0.03	0.71 ± 0.16	0.14 ± 0.01	0.15 ± 0.01
NGC 7130 ^{a,b,c}	1.41 ± 0.07	1.51 ± 0.94	1.35 ± 0.04	1.42 ± 0.69	1.34 ± 0.04	1.40 ± 0.68	1.37 ± 0.04	1.44 ± 0.72	1.35 ± 0.04	1.42 ± 0.69
IC 5179 ^{a,b,c}	0.66 ± 0.03	0.68 ± 0.17	0.49 ± 0.02	0.51 ± 0.06	0.47 ± 0.02	0.49 ± 0.06	0.49 ± 0.02	0.50 ± 0.06	0.47 ± 0.02	0.48 ± 0.06

Notes. H₂ 2.12 μm /Bry integrated measurements of regions of interest. Observed (obs) and extinction corrected (corr) values are given. ^(a) Nucleus and HII peak are coincident. ^(b) Nucleus and H₂ peak are coincident. ^(c) Nucleus and [FeII] peak are coincident. ^(d) HII and [FeII] peaks are coincident.

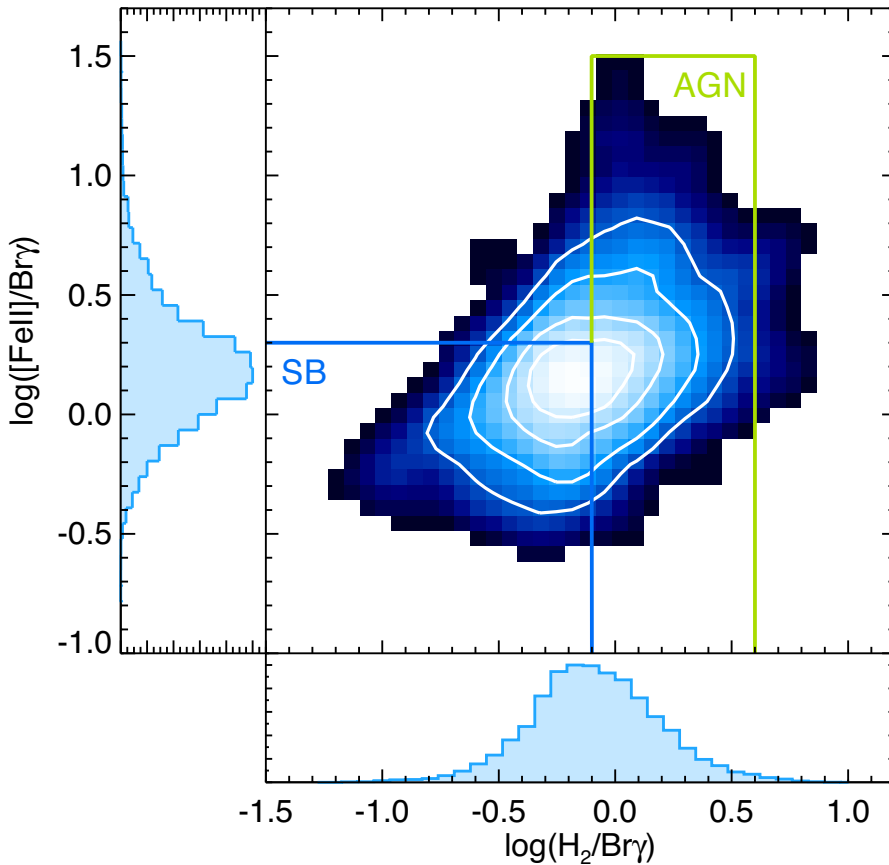


Fig. 1. Distribution of the spatially resolved regions (spaxel-by-spaxel) in the $\log([\text{FeII}]1.64 \mu\text{m}/\text{Bry}) - \log(\text{H}_2/2.12 \mu\text{m}/\text{Bry})$ plane for the sample of LIRGs. Contours encircle the areas where 25%, 50%, 75%, and 90% of the spaxels are contained. The histograms represent the distribution for the $[\text{FeII}]1.64 \mu\text{m}/\text{Bry}$ and H_2/Bry ratios with mode (log) values of +0.16 and -0.17, respectively. The blue and green lines indicate the upper limits for the young star-forming regions and AGNs as derived from our spatially resolved two-dimensional spectroscopy on the high surface brightness compact regions of the prototype LIRGs (see Sect. 3.3 for details).

Detailed studies of the near-IR H_2 line ratios in Seyferts, star-forming galaxies (Riffel et al. 2013a), LIRGs (Bedregal et al. 2009; Emonts et al. 2014), and nearby spirals (Mazzalay et al. 2013) indicate that the hot molecular gas is close to thermally excited because of a combination of X-ray radiation and shocks. On the other hand, the Bry line is a direct tracer of the UV-ionizing radiation and therefore the H_2/Bry ratio gives an empirical first indication of the relative importance of each mechanism (UV radiation versus X-ray radiation or shocks). This will be discussed further in Sects. 3.3.2 to 3.3.4 when presenting the line ratios for the galaxies selected as prototypes.

3.3. Understanding the near-IR emission line diagnostic diagram for star-forming galaxies and AGNs

3.3.1. LIRGs in the $[\text{FeII}]1.64 \mu\text{m}/\text{Bry} - \text{H}_2/2.12 \mu\text{m}/\text{Bry}$ plane

The distribution of all spatially resolved regions in our sample of LIRGs ($\sim 28\,000$ spaxels in nine LIRGs) covers a well-defined region in the $[\text{FeII}]/\text{Bry} - \text{H}_2/\text{Bry}$ plane (see Fig. 1), ranging from pure star-forming regions to AGNs (Seyferts), according to our empirical classification derived from the spatially resolved spectroscopy of bright AGN, compact young and aged star-forming clumps in three of our LIRGs, respectively (see Sects. 3.3.2 to 3.3.4).

In addition no regions simultaneously show line ratios $\log([\text{FeII}]/\text{Bry}) \geq 1.0$ and $\log(\text{H}_2/\text{Bry}) \geq 0.8$, i.e. LINERs according to the classification scheme proposed by Riffel and collaborators (Riffel et al. 2013a). These results come as a surprise as all LIRGs but two (NGC 5135 and NGC 7130) in the sample are classified as star forming and do not show evidence

of a luminous AGN, according to the mid-IR (Alonso-Herrero et al. 2012) and X-ray emission (Pereira-Santaella et al. 2011). In addition, according to the optical emission line diagnostics, the excitation of the extended emission is characteristic of star formation and LINERs (Monreal-Ibero et al. 2006, 2010). This extended LINER emission in LIRGs is explained by the presence of large scale shocks (Monreal-Ibero et al. 2010) and composite AGN-starbursts (Kewley et al. 2001; Yuan et al. 2010), and likely not due to the existence of a weak AGN. In the following, we further investigate these apparent inconsistencies by studying in more detail two LIRGs that are identified as prototypes of excitation dominated by star formation (IC 4687), by a Seyfert 2 nucleus (NGC 7130), and a third LIRG (NGC 5135) classified as composite (AGN, and star-forming clumps of different ages and masses). In this galaxy, the different excitation mechanisms (i.e. AGN and star-forming clumps of different ages) are at play. This will help first to spatially resolve and identify the dominant ionization mechanism in each region, and secondly define new limits and relations in the near-IR plane for AGNs, pure star-forming regions (young and evolved), and composite objects. In our small sample of LIRGs, all galaxies but NGC 5135 and NGC 7130 belong to the class of star-forming galaxies with no evidence of a luminous AGN. However, it is known that a fraction of LIRGs have AGNs (Veilleux et al. 1995), and therefore any given LIRG will belong to one of the categories represented by the prototypes.

Based on our capability of spatially resolving the distribution of the emitting gas with our integral field spectroscopy, we differentiate five types of regions: i) bright compact Bry emitting regions that are identified with young (≤ 6 Myr), massive star-forming clumps dominated by the radiation from

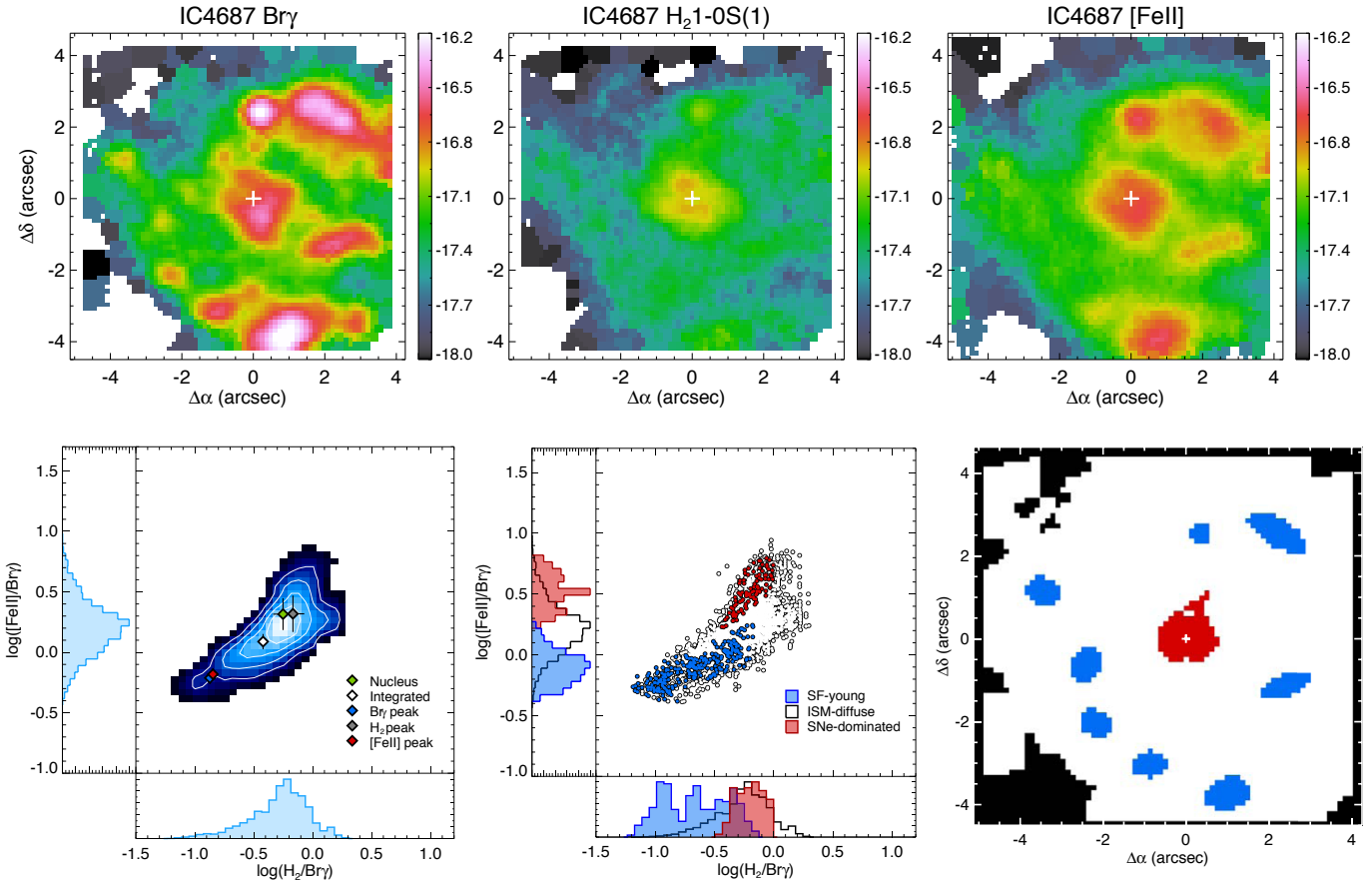


Fig. 2. Maps (*top panels*) of the ionized Br γ , warm molecular (H_2 2.12 μm) and partially ionized ([FeII] 1.64 μm) gas for IC 4687, prototype star-forming LIRG, obtained from the SINFONI data cubes. Based on the emission line maps, the high surface brightness regions identified as young star-forming (in blue), aged, SNe-dominated (in red), and extended diffuse (in white) are shown for reference (*lower right panel*). The distribution of these regions in the $\log([\text{FeII}]/\text{Br}\gamma) - \log(H_2/\text{Br}\gamma)$ plane (*lower central panel*) occupy different areas indicating differences in the excitation conditions. The overall (spaxel-by-spaxel) distribution over the entire SINFONI FoV, as well as the line ratios for the nucleus and brightest emission line peaks are also shown (*lower left panel*).

main-sequence massive stars; ii) bright compact [FeII] regions identified as aged ($\sim 8\text{--}40$ Myr) star-forming clumps dominated by supernovae (SNe); iii) bright compact [SiVI] regions identified with nuclear AGNs; iv) diffuse extended [SiVI] emitting regions where the AGN radiation field is still detected; and v) diffuse extended non-[SiVI] emitting regions covering most of the galaxy. In the following we identify these different emitting regions in the prototypes to more accurately constrain the line ratios produced by different ionization sources.

3.3.2. IC 4687: prototype of LIRG dominated by star formation

IC 4687 can be considered as the prototype of star-forming LIRG with its Br γ emission (Fig. 2 left upper panel) dominated by several circumnuclear star-forming clumps, and a weak Br γ nucleus, which is also identified as weak Pa α emitter on HST imaging (Alonso-Herrero et al. 2006). The H_2 emission (Fig. 2 central upper panel) appears very diffuse and distributed over the entire circumnuclear region, with an above-average nucleus, and presenting the highest surface brightness. Finally, the [FeII] emission (Fig. 2 right upper panel) follows that of the Br γ clumpy light distribution. The overall distribution of the line ratios in the [FeII]1.64 $\mu\text{m}/\text{Br}\gamma - H_2$ 2.12 $\mu\text{m}/\text{Br}\gamma$ plane (Fig. 2, lower left panel) is such that the mode of the line ratios is outside the previously identified region for star-forming galaxies (Riffel et al. 2013a) but with a long tail towards low

[FeII]1.64 $\mu\text{m}/\text{Br}\gamma$ (0.6) $H_2/\text{Br}\gamma$ ratios (down to 0.15), characteristic of star-forming regions dominated by young, ionizing stars as in M82 (Förster Schreiber et al. 2001; see also Fig. 5).

The bright circumnuclear Br γ regions (blue points/regions in Fig. 2) identify young star-forming regions with [FeII]/Br γ and $H_2/\text{Br}\gamma$ values well below 1. The nuclear region (red points/regions in Fig. 2) appears as a weak and resolved ionizing source (as traced by the Pa α and Br γ lines), with no evidence of an AGN (Alonso-Herrero et al. 2006, 2012; Pereira-Santaella et al. 2011), and is identified with evolved, supernova dominated, star-forming regions (Pereira-Santaella et al., in prep.). The line ratios are well separated from that of the young star-forming regions with [FeII]/Br γ and $H_2/\text{Br}\gamma$ ratios about six times higher than that of young star-forming clumps, respectively. The diffuse, line-emitting gas (white points/region in Fig. 2) has [FeII]/Br γ ratios in between those of young and supernovae dominated star-forming regions, while the $H_2/\text{Br}\gamma$ ratio is more consistent with that of supernovae dominated regions.

3.3.3. NGC 7130: prototype of a LIRG dominated by a Seyfert 2 nucleus

The light distribution of all emission lines in this galaxy is dominated by the nucleus and its surrounding regions while a few star-forming clumps appear along a spiral arm at distances of

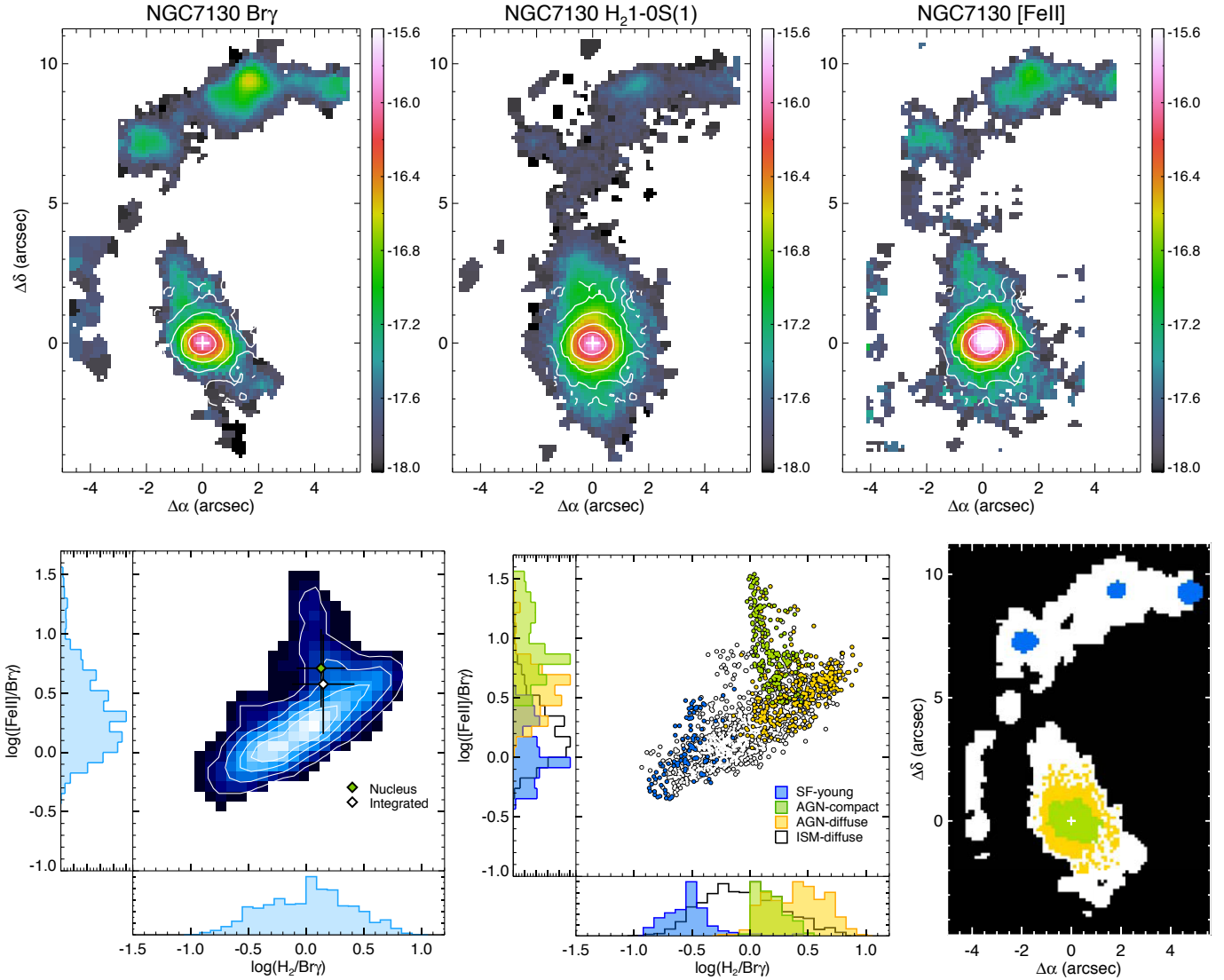


Fig. 3. Same as Fig. 2, except for the AGN prototype LIRG NGC 7130. Note that the coronal $[\text{SiVI}]1.96 \mu\text{m}$ emission line is detected in the spectra of this galaxy (contours in *top panels*) and therefore two new regions, AGN compact (green points) and AGN diffuse (yellow points) in the nucleus, and around it have been identified and occupy a region in the $\log([\text{FeII}]1.64 \mu\text{m}/\text{Br}\gamma) - \log(\text{H}_2 2.12 \mu\text{m}/\text{Br}\gamma)$ plane very different from that of young star-forming clumps. Also note that for NGC 7130, the nucleus coincides with the peak emission for all lines.

about 2.4 to 3 kpc from the nucleus (see Fig. 3). The nucleus itself contains a known Seyfert 2-type AGN (Levenson et al. 2005; Alonso-Herrero et al. 2012), also identified in our spectra by the presence of coronal $[\text{SiVI}]1.96 \mu\text{m}$ emission line (Piqueras López et al. 2012). In this galaxy, there are two well-identified distributions in the near-IR diagnostic plane (Fig. 3 lower left panel). While a large fraction of the spatially resolved regions are distributed between the upper right corner of the star-forming region and the low AGN line ratios, there is a non-negligible fraction of spaxels showing very high $[\text{FeII}]/\text{Br}\gamma$ values (≥ 5), as well as $\text{H}_2/\text{Br}\gamma$ values similar to those of Seyferts (i.e. $\sim 1-2$). Note that previous optical and ultraviolet studies of the nucleus of this galaxy have identified it as an AGN plus star-forming region. Optical emission line ratios show a smooth transition from AGN-dominated in the centre to star-forming activity in the external regions (Davies et al. 2014, and references), while the observed UV and mid-IR spectrum of the nucleus indicates the presence of young star clusters (González Delgado et al. 1998) and polycyclic aromatic hydrocarbon emission

characteristic of star formation (Díaz-Santos et al. 2010; Esquej et al. 2014), respectively.

In this galaxy, we identify four regions (Fig. 3 bottom panels): i) the compact $[\text{SiVI}]$ emitting region (green points/region) as the AGN-dominated nucleus; ii) the compact and bright $\text{Br}\gamma$ regions (blue points/regions) as the young star-forming clumps in the spiral arm; and iii) the diffuse AGN ionized region (yellow points/region) where weak $[\text{SiVI}]$ emission around the nucleus is still detected; and finally iv) the diffuse ionized ISM (white points/regions) in the extranuclear regions where no $[\text{SiVI}]$ is detected, and along the spiral arm.

The AGN-dominated nucleus clearly separates from the bright, compact $\text{Br}\gamma$ regions and from the diffuse ionized medium, covering exclusively the highest (i.e. ≥ 5) $[\text{FeII}]/\text{Br}\gamma$ values. On the other hand, the bright, $\text{Br}\gamma$ circumnuclear regions, cover a range of values similar to that of the regions dominated by young stars in the prototype of star-forming LIRG IC 4687 (Sect. 3.3.2). The AGN-diffuse medium clearly separates from the AGN- and young-star-dominated regions,

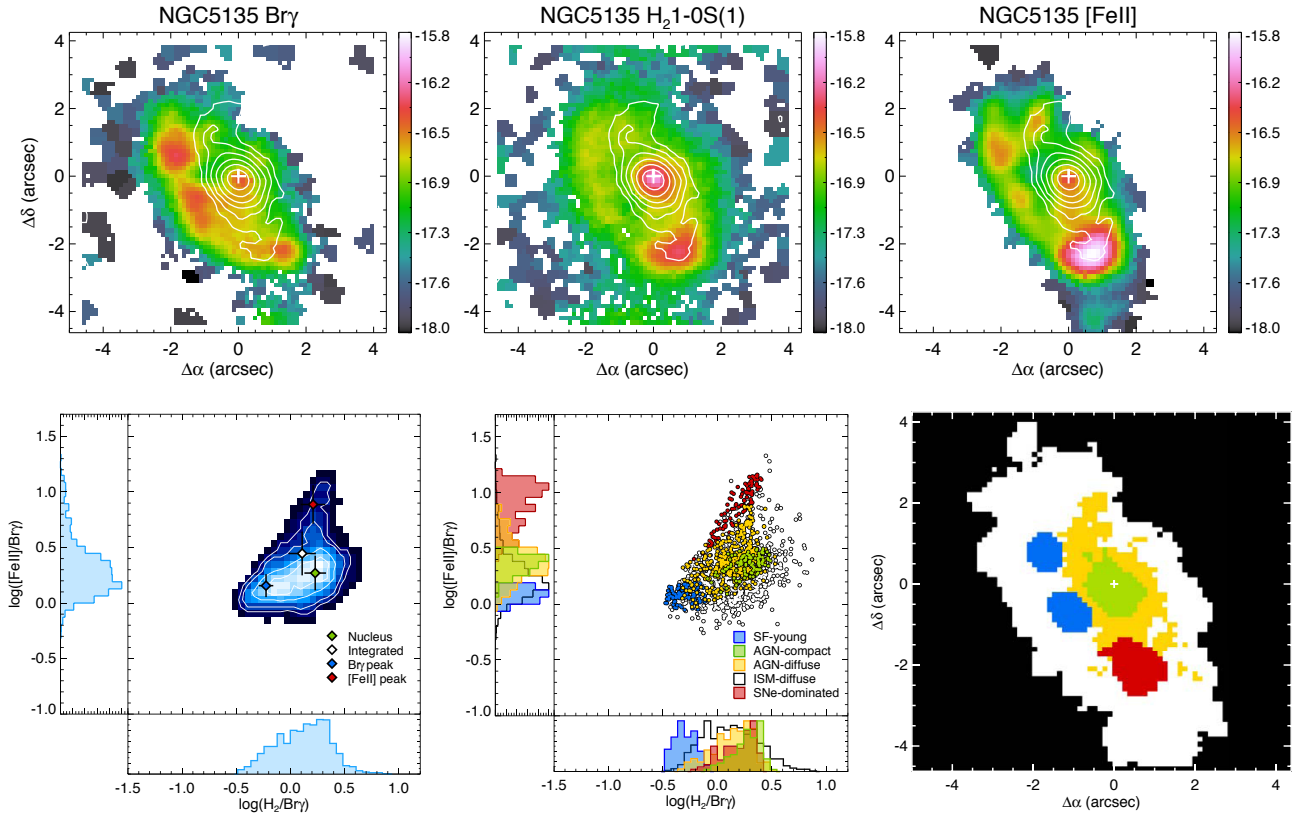


Fig. 4. Same as Fig. 2, except for the composite prototype LIRG NGC 5135. This galaxy is the only example where all different types of regions are identified: circumnuclear young, and SNe-dominated, star-forming clumps, compact and extended AGN regions (traced by the [SiVI]1.96 μ m emission line and shown by contours in *top panels*), and general diffuse ISM. All these different regions, i.e. excitation mechanisms, occupy different and well-separated areas in the $\log([\text{FeII}]/\text{Br}\gamma) - \log(\text{H}_2/\text{Br}\gamma)$ plane (*lower middle panel*).

covering the highest end of the H $_2$ /Br γ ratio while presenting intermediate [FeII]/Br γ values. Lastly, the diffuse non-[SiVI] emitting medium covers a very wide range of H $_2$ /Br γ values from those of compact young star-forming clumps to AGN-dominated nucleus, and with [FeII]/Br γ values slightly above that for young star-forming regions.

3.3.4. NGC 5135: prototype of composite LIRG

Out of our sample of LIRGs, NGC 5135 is the only galaxy where clear evidence for spatially resolved and well-separated regions, dominated by either a Seyfert 2 nucleus, young massive stars, or supernovae, is well established (Bedregal et al. 2009; Colina et al. 2012). Imaging of the different emission lines for the entire emitting region of about 1.5 kpc across, for the regions dominated by the AGN, young stars, supernovae, and diffuse ISM, and the specific integrated values for these regions are presented in Fig. 4. All the regions are within a radius of 600 parsecs from the nucleus, and are traced by the brightest circumnuclear Br γ (i.e. young star-forming clumps), circumnuclear [FeII] (i.e. aged, SNe dominated star-forming clump), and compact [SiVI] (i.e. AGN, shown as contours in Fig. 4 upper panels) emitting regions. In addition, the diffuse surrounding medium is traced by the lower surface brightness areas outside these compact regions. As for NGC 7130, we can distinguish the diffuse AGN-contaminated medium traced by the presence of extended, low surface brightness [SiVI], and the general diffuse ionized medium where no trace of coronal gas is detected. NGC 5135 represents therefore a prototype of the so-called

composite galaxies where AGN, young stars, and supernovae clumps, as well as AGN-contaminated and general diffuse ionized medium, are all within about 1–2 kpc, therefore unresolved (even with AO) in intermediate and high-redshift galaxies. As for IC 4687 and NGC 7130, the comparison of the distributions of the emission line ratios for different, spatially resolved regions (Fig. 4) give very important clues:

- i) The young (≤ 6 Myr) star-forming clumps dominated by massive, ionizing stars (blue points/regions) appear to have [FeII]/Br γ and H $_2$ /Br γ ratios factors of about six and three lower than that of the aged, SNe-dominated, star-forming clump (red points/region), respectively. These young clumps occupied a region similar to that of the young stars dominated IC 4687 galaxy and the star-forming clumps in the NGC 7130 spiral.
- ii) The aged (~ 8 –40 Myr), SNe-dominated circumnuclear star-forming clump (red points/region) occupies a region with very high [FeII]/Br γ ratios (~ 3 to 16). The lower range is similar to the ratios measured in the brightest radio supernovae remnants of M82 (Greenhouse et al. 1997). The upper values are close to those detected in supernovae remnants, such as the Crab nebula (Graham et al. 1990) and IC 443 (Graham et al. 1987), where FeII/Br γ ratios well above 10 and up to 50 have been measured.
- iii) The AGN-dominated nuclear region (green points/region) has an H $_2$ /Br γ ratio similar to that of the SNe-dominated clump while having a [FeII]/Br γ ratio ~ 3.5 lower than that of the SNe-dominated region, i.e. close to a factor 2 higher than that of the young star-forming clumps.

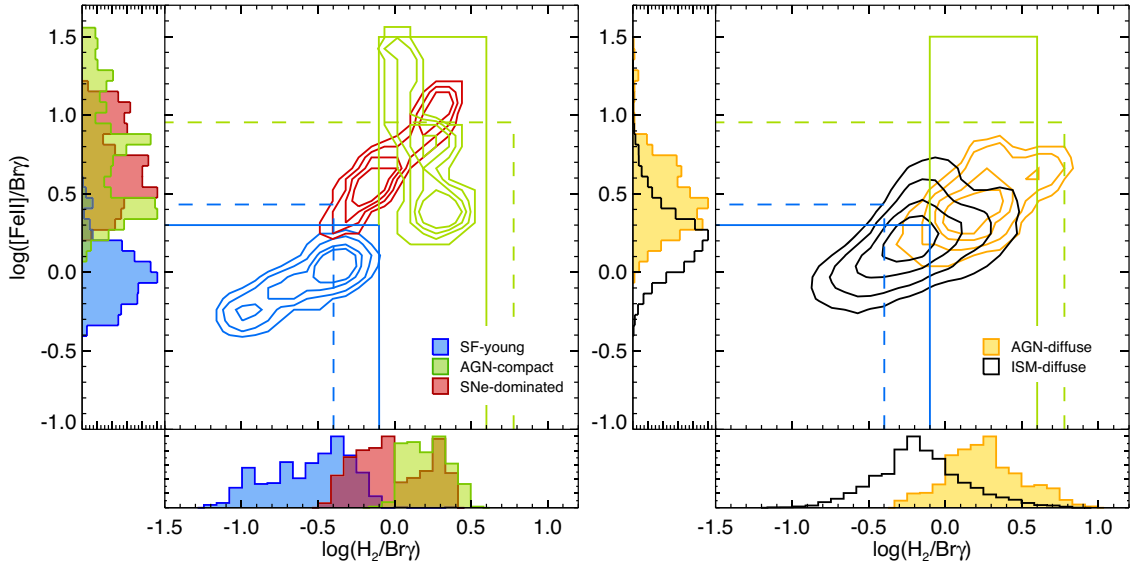


Fig. 5. Distribution of the line ratios in the $\log([\text{FeII}]1.64 \mu\text{m}/\text{Bry}) - \log(\text{H}_2.12 \mu\text{m}/\text{Bry})$ plane for the various types of regions identified in the three prototypes (IC 4687, NGC 7130, and NGC 5135). *Left panel:* compact high surface brightness young star-forming clumps (blue), aged, SNe-dominated clumps (red), compact nuclear AGN (green). *Right panel:* diffuse AGN (yellow), and general diffuse medium (white). The blue and green lines indicate the new upper limits for the young star-forming regions and Seyferts as derived from our spatially resolved two-dimensional spectroscopy on the high surface brightness compact regions. For comparison, the two broken lines represent the upper limits of the line ratios for the starbursts and Seyferts previously identified by Riffel and coworkers (Riffel et al. 2013a) based on 1D spectroscopy. Contours contain 25%, 50%, 75%, and 90% of the points for each class.

- iv) The AGN diffuse region (yellow points/region) traced by the low surface brightness [SiVI] emitting gas occupies mostly the region of AGN-dominated ionized gas, with some overlap with the SNe-dominated and well disentangled from the young star-forming clumps.
- v) The diffuse ionized ISM in the external regions (white points/region) has an $[\text{FeII}]/\text{Bry}$ ratio distribution in between that of AGN and young star-forming clumps, and an H_2/Bry distribution wider than any of the other regions but covering mostly the range of values characteristic of AGN- and SNe-dominated star-forming clumps.

All these characteristics can be understood as variations on the properties of the radiation field, presence of shocks, and iron abundances on scales of hundred of parsecs or less. The differences between the aged ($\sim 8\text{--}40$ Myr) SNe-dominated and the young (≤ 6 Myr) star-forming clumps can be understood as the combination of three different effects: i) enhancement of the iron abundance and emission due to supernovae (i.e. increased $[\text{FeII}]$); ii) a larger relative amount of ionizing photons in young clumps (i.e. increased Bry); and iii) a larger relative importance of shocks and X-ray emission associated with supernovae (i.e. increased H_2). On the other hand, the differences between the AGN-dominated region and the young star-forming clumps can be understood as due to a larger amount of X-rays with respect to UV-ionizing radiation in the AGN than in young, massive star-forming clumps. An excess of X-rays penetrate more deeply in the surrounding medium, producing a larger partially ionized region where $[\text{FeII}]$ and H_2 emission is enhanced. Detailed studies of the X-ray emission in NGC 5135 (Colina et al. 2012) established the presence of hard X-ray emitting regions associated with the Seyfert 2 nucleus and the bright SNe-dominated $[\text{FeII}]$ emission peak, with a diffuse soft X-ray component covering the entire circumnuclear region. Moreover, the K -band H_2 emission line ratios for the nucleus and the SNe-dominated

region are consistent with the predicted thermal ratios due to X-rays heating, while the ratios for young star-forming clumps depart from thermal (Bedregal et al. 2009).

The excitation properties of the diffuse gas, on the other hand, can be understood qualitatively as a consequence of the leaking of different radiation fields associated with different, spatially distributed ionization sources. In fact, the H_2/Bry ratio appears to be more likely associated with the leaking of X-rays from the AGN and SNe-dominated clump, while the $[\text{FeII}]/\text{Bry}$ seems to be more associated with the UV-radiation field, assuming the same iron abundances for the nucleus, young star-forming clumps and diffuse medium. While there is no evidence for radio jets in this galaxy, shocks associated with jets can also enhance the $[\text{FeII}]$ emission as in NGC 4151 (Storchi-Bergmann et al. 2009), and therefore this mechanism should also be considered in AGNs with energetic radio jets.

4. Discussion

4.1. LIRGs and Seyferts. Defining new near-IR line ratio limits and relations to discriminate activity in galaxies

Based on long-slit, near-IR spectra of a sample of star-forming galaxies and LINERs combined with previous similar data for Seyferts (Rodríguez-Ardila et al. 2005; Riffel et al. 2013a) identified some areas in the $[\text{FeII}]1.26 \mu\text{m}/\text{Pa}\beta$ and $\text{H}_2.12 \mu\text{m}/\text{Bry}$ plane that discriminate among the different classes of nuclear activity in galaxies from star formation to Seyferts and LINERs. Following this study, we have transformed the original $[\text{FeII}]1.26 \mu\text{m}/\text{Pa}\beta$ limits to $[\text{FeII}]1.64 \mu\text{m}/\text{Bry}$ applying the corresponding atomic and recombination parameters and correcting for internal extinction as explained in Sect. 2. These regions, identified with broken lines in Figs. 5 and 6, are defined as i) star-forming galaxies characterized by $\log([\text{FeII}]1.64 \mu\text{m}/\text{Bry}) \leq +0.42$ and

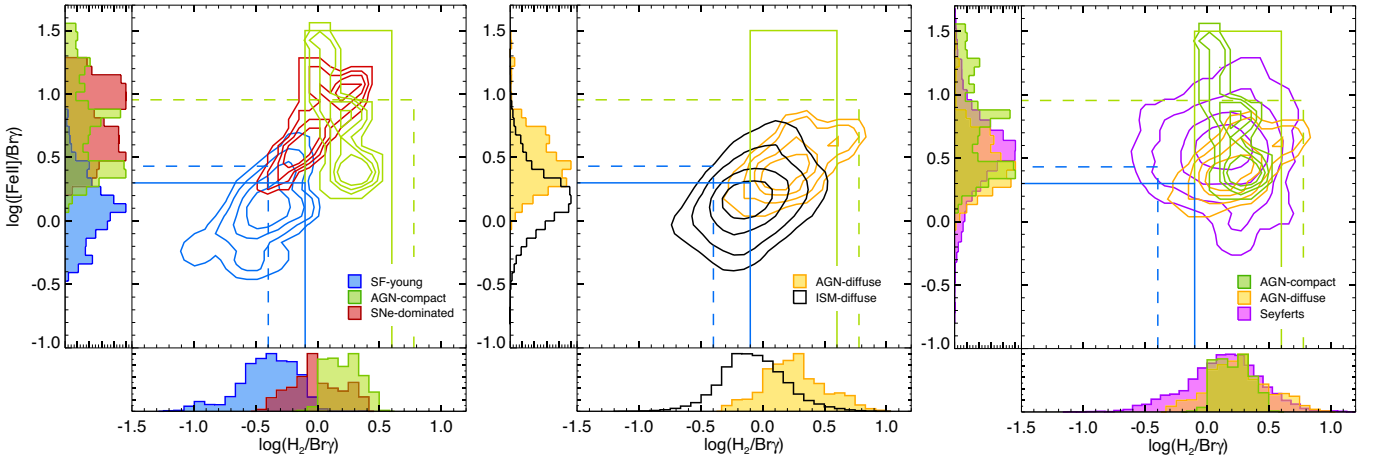


Fig. 6. Distribution of the line ratios for all LIRGs in the $\log([\text{FeII}]/\text{Bry}) - \log(\text{H}_2/\text{Bry})$ plane for different types of regions: high surface brightness clumps and nucleus (*left panel*), for the diffuse, AGN and non-AGN, extended regions (*central panel*), and for the compact and diffuse AGN medium in LIRGs and low- z Seyferts (*right panel*). The blue and green lines indicate new upper limits for young star-forming regions and Seyferts as derived from the compact, high surface brightness regions in our LIRG prototypes (see Fig. 5). For comparison, the two broken lines represent the limits for the starbursts and Seyferts previously identified by Riffel and coworkers (Riffel et al. 2013a) based on 1D spectroscopy. Contours contain 25%, 50%, 75%, and 90% of the points for each class.

$\log(\text{H}_2/2.12 \mu\text{m}/\text{Bry}) \leq -0.4$; ii) Seyfert galaxies characterized by $+0.42 < \log([\text{FeII}]/1.64 \mu\text{m}/\text{Bry}) \leq +0.95$ and $-0.4 < \log(\text{H}_2/2.12 \mu\text{m}/\text{Bry}) \leq +0.78$; and iii) LINERs characterized by $\log([\text{FeII}]/1.64 \mu\text{m}/\text{Bry}) > +0.95$ and $\log(\text{H}_2/2.12 \mu\text{m}/\text{Bry}) > +0.78$.

While previous work (Riffel et al. 2013a and references therein) gave the flux-weighted emission line ratios and corresponding limits for Seyferts, starbursts, and LINERs as above, we identify new limits and relations for the different excitation mechanism as a function of location within the galaxy (Fig. 5 for the prototypes, and Fig. 6 for all LIRGs in the sample). These include those either associated with the compact AGN (green contours), (circum)nuclear young and aged, SNe-dominated star-forming clumps (blue and red contours, respectively), the extended AGN-diffuse medium around the nucleus (yellow contours), and the general diffuse ISM, not directly associated with any of the previous regions (black contours). This new approach, 2D distribution versus integrated light, is important because many active galaxies, including high-redshift galaxies, do actually have an AGN and (circum)nuclear star-forming clumps of different ages. This coexistence produces a mixture of ionizing and excitation conditions in the ISM due to the relative contribution of the different radiation fields, to the presence of shocks induced by the AGN, radio jets, stellar winds and supernovae, and to the spatial distribution of the ionizing sources.

We identify the new areas in the $[\text{FeII}]/1.64 \mu\text{m}/\text{Bry} - \text{H}_2/2.12 \mu\text{m}/\text{Bry}$ plane (Fig. 5) occupied by the spatially separated and well-resolved high surface brightness regions that we associate with different dominant ionization/excitation sources in our prototypes (see Sects. 3.3.2 to 3.3.4):

- SF-young (i.e. ≤ 6 Myr, star-forming clumps): $\log([\text{FeII}]/\text{Bry}) = 0.238 + 0.476 \times \log(\text{H}_2/\text{Bry})$ in the region limited by $-0.4 \leq \log([\text{FeII}]/\text{Bry}) \leq +0.4$ and $-1.2 \leq \log(\text{H}_2/\text{Bry}) \leq -0.1$;
- SNe-dominated (i.e. $\sim 8-40$ Myr, star-forming clumps): $\log([\text{FeII}]/\text{Bry}) = 0.705 + 1.000 \times \log(\text{H}_2/\text{Bry})$ in the region limited by $+0.2 \leq \log([\text{FeII}]/\text{Bry}) \leq +1.2$ and $-0.4 \leq \log(\text{H}_2/\text{Bry}) \leq +0.4$;

- AGN-compact: $\log([\text{FeII}]/\text{Bry}) = 1.009 - 1.312 \times \log(\text{H}_2/\text{Bry})$ within the region limited by $-0.3 \leq \log([\text{FeII}]/\text{Bry}) \leq +1.5$ and $-0.3 \leq \log(\text{H}_2/\text{Bry}) \leq +0.9$.

In addition to the classification based on the compact, high surface brightness regions, limits and relations for the diffuse medium can also be established. The AGN-diffuse region identified in NGC 5135 and NGC 7130 (yellow points in Figs. 5 and 6) are all within the AGN area as defined by Riffel et al. (2013a), cover an area similar to that of the AGN-compact regions identified above but with high values that are less extreme in $[\text{FeII}]/\text{Bry}$ (no values above 10 are detected), and are characterized by a linear relation $\log([\text{FeII}]/\text{Bry}) = 0.353 + 0.458 \times \log(\text{H}_2/\text{Bry})$. The slope of this relation is very close to that found for the young star-forming clumps but clearly departs from that derived for a sample of star-forming galaxies, Seyferts, and LINERs ($\log([\text{FeII}]/\text{Bry}) = 0.446 + 0.749 \times \log(\text{H}_2/\text{Bry})$, obtained from the integrated $[\text{FeII}]/1.26 \mu\text{m}/\text{Pa}\beta$ and H_2/Bry ratios (Riffel et al. 2013a). A possible cause for this discrepancy could be produced by the galaxies identified as LINERs in Riffel's sample that appear showing the highest $[\text{FeII}]/\text{Bry}$ and H_2/Bry line ratios. LINERs are known to have very weak emission lines in the near-IR and therefore the subtraction of the stellar (hydrogen) absorption lines and continuum is essential to obtain an accurate measurement of the emission line fluxes as already pointed out previously (Larkin et al. 1998; Alonso-Herrero et al. 2000; Riffel et al. 2013a). The net effect would be an increase in the flux of the $\text{Pa}\beta$ and Bry lines therefore bringing down the corresponding line ratios, and therefore decreasing the slope of the linear relation. The regions identified as AGN compact and AGN diffuse agree very well with the distribution observed in Seyferts, with the mode values of their distributions in the near-IR diagnostic plane in agreement within 0.2 dex (see Fig. 6 right panel).

Finally, the diffuse ISM (black contours in Fig. 6) has a very wide range of values covering those corresponding to all different excitation mechanisms. This suggests that the general heating and radiation field in these extended regions is a mixture of that of the individual heating sources (i.e. young stars,

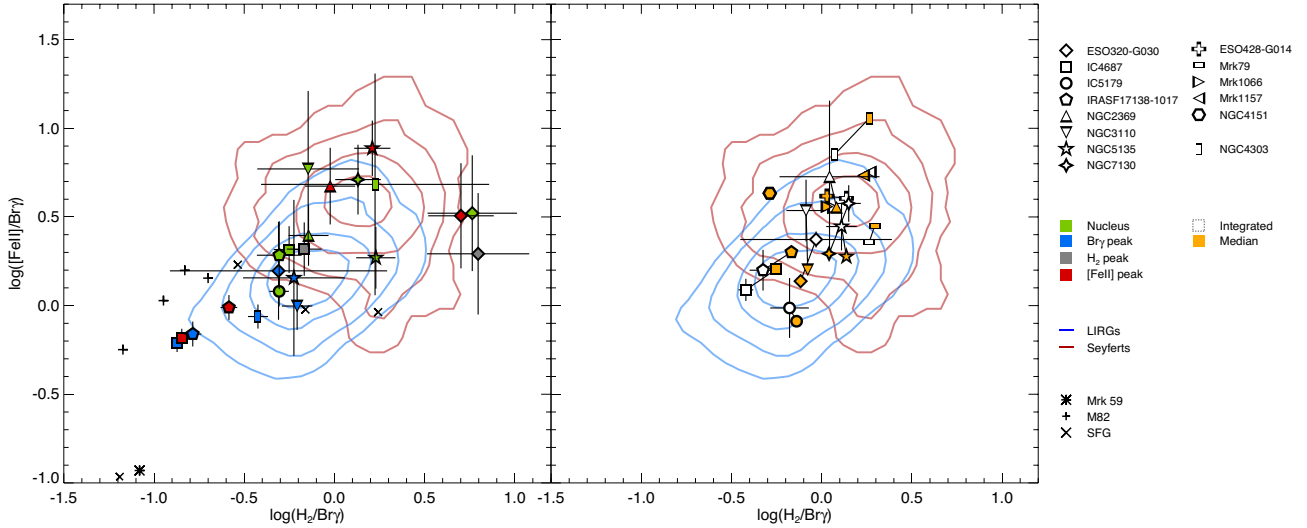


Fig. 7. Near-IR emission line ratios for the nucleus and brightest Bry, H₂, and [FeII] emitting regions in LIRGs (*left panel*). Note that in some LIRGs these regions coincide (see Tables 7 and 8 for details). The distribution of spatially resolved regions (spaxel-by-spaxel) are represented by contours for both LIRGs (blue) and Seyferts (red). Contours for LIRGs and Seyferts contain 25%, 50%, 75%, and 90% of the points. Examples of nearby star-forming galaxies like M82, Mrk 59, composite AGN+stars (NGC 4303), and other low-*z* SFG are also indicated. The emission line ratios for the sample of LIRGs and Seyferts as derived from the integrated values (i.e. 1D flux-weighted), and median of the 2D distribution (i.e. spaxel-by-spaxel) of values is also presented (*right panel*).

supernovae, AGN, shocks, etc.) weighted by their relative flux contribution and spatial distribution.

This new classification scheme allows us not only to discriminate empirically the excitation/ionization dominated by young stars from that dominated by AGN but also adds a new class, the SNe-dominated (i.e. aged) star-forming regions. In addition it establishes that the excitation/ionization conditions of the extended, diffuse medium is a complex mixture of all the different mechanisms at work, weighted by their relative contribution to the total energy output and also weighted by their spatial distribution.

4.2. Excitation mechanisms: bright, compact line-emitting regions

The line ratios for the nucleus, and the brightest Bry, [FeII], and H₂ regions for each LIRG in the sample have also been computed (Fig. 7 left) and compared with the 2D distributions for LIRGs and Seyferts (blue and red contours, respectively). Note that for some of the galaxies, the regions emitting the brightest lines are spatially coincident within the available angular resolution. In these cases, only one of the regions is represented, typically the nucleus, which is also in most cases the H₂ peak region (see Tables 7 and 8 for the specific values and details about the spatial coincidence of the emitting regions). In addition, line ratios for the nucleus and star-forming regions in nearby galaxies covering different metallicities and morphologies (see Sect. 2.3 for details) are also included in this analysis for a direct comparison.

Most of the brightest emitting regions are located either close to the mode of the 2D distribution of the emission line ratios for LIRGs (blue contours), or towards lower [FeII]/Bry and H₂/Bry ratios. These agree with the range of values observed in the nucleus and off-nuclear regions of M82, in the circumnuclear young star cluster in NGC 4303, and in the nucleus of star-forming galaxies with metallicities around solar, and are located well above the values derived in low-metallicity ($Z_{\odot}/3$ or less), star-forming galaxies (Mrk 59 and NGC 1569W). A

small fraction of regions are located in the area previously identified as SNe-dominated (nucleus of NGC 3110, [FeII] peaks in NGC 5135 and IC 4687) and AGN-dominated (NGC 7130). The two galaxies with Seyfert 2 nucleus show a very different behaviour. While the Seyfert 2 nucleus of NGC 7130 lies close to the locus of the nearby Seyferts (red contours) and close to the nucleus of the NGC 4303 (low-luminosity AGN plus nuclear young cluster, see references in Sect. 2.3), the nucleus of NGC 5135 shows a significantly lower [FeII]/Bry ratio. In addition to an AGN, NGC 7130, and NGC 5135 have strong starbursts in their central 100 pc region (González Delgado et al. 1998; Diaz-Santos et al. 2010; Esquej et al. 2014). Therefore changes in the emission line ratios could be expected if the nuclear radiation field is a mixture of AGN and young stars with different relative contributions, and/or due to aging effects in the nuclear star clusters. Finally, only the nuclear regions in ESO320–G030 appear as outliers with very high values (~ 6) for the H₂/Bry ratio, and intermediate [FeII]/Bry (Fig. 7, see also Fig. A.4). We identified this region as H₂-dominated requiring detailed investigation.

In summary, most compact bright regions in LIRGs appear to be similar to solar-metallicity, star-forming clumps in nearby galaxies, and well separated from low-metallicity, star-forming clumps. A smaller fraction of regions appear to be consistent with Seyfert nuclei, although the contribution of young stars and SNe appears to play a relevant role. The nucleus of ESO320–G030 is identified as an outlier to the general behaviour because of its strong H₂ emission relative to that of Bry.

4.3. Spatially resolved versus integrated line ratios. Implications for the classification of high-*z* star-forming galaxies

While all the analysis we performed so far is based on the two-dimensional distribution of the line ratios, most studies of the excitation mechanisms in large galaxy surveys have been based on the nuclear/integrated line ratios. The main differences between these two measurements is that, while the integrated

values represent a flux-weighted measurement and therefore it is dominated by the brightest observed regions, the median of the distribution of the spatially resolved regions gives a value more representative of the general excitation and ionization conditions of the extended diffuse medium in galaxies. This is particularly important for LIRGs, where different ionizing sources coexists, and where the clumpy structure of the dust extinction can play a relevant role.

A comparison of the flux-weighted (i.e. integrated) and the 2D distribution (median) values for the LIRGs and Seyferts is presented (Figs. 7, right panel). For the Seyferts in the sample, the integrated and median values for the line ratios agree within less than 0.1 dex, and therefore occupy the same location in the $[\text{FeII}]/\text{Bry}-\text{H}_2/\text{Bry}$ plane, near the locus of the 2D distribution. On the other hand, clear differences appear for LIRGs. While IC 5179 shows integrated and median values within 0.1 dex, IC 4687 and IRASF 17138–1017 show integrated values slightly lower (factors 0.5 to 0.6) than their median ratios. The rest of the LIRGs show larger differences in the $[\text{FeII}]/\text{Bry}$ ratio with integrated over median values ~ 1.5 – 2.2 times higher. The net effect for these galaxies is that they appear with higher excitation, i.e. moving towards the locus of the AGNs, when the flux-weighted integrated values are considered instead of the median. Whether this is a general behaviour in LIRGs or galaxies in general (similar changes in the line ratios when comparing nuclear and off-nuclear regions in star-forming galaxies have been reported recently by Martins et al. 2013), needs further exploration with a larger volume of galaxies with available integral field spectroscopy. This would have obvious implications when classifying high- z galaxies for which the linear resolution would be in general very limited (~ 1.5 – 2 kpc), even with sub-arcsec angular resolution with current and future facilities like the JWST.

5. Conclusions

We investigated the two-dimensional excitation structure of the ISM in a sample of low- z LIRGs and Seyferts, using near-IR integral field spectroscopy. Based on the spatially resolved spectroscopy of three (selected) LIRG prototypes, we identified in the $[\text{FeII}] 1.64 \mu\text{m}/\text{Bry}-\text{H}_2 2.12 \mu\text{m}/\text{Bry}$ plane the regions dominated by the different heating sources, including young main-sequence massive stars, supernovae, and AGNs. This extends to the near infrared the well-known optical emission line diagnostics used to classify the activity in galaxies. The main conclusions are:

1. The two-dimensional (i.e. spaxel-by-spaxel) distribution of the excitation conditions of the ISM in LIRGs occupy a wide region in the near-IR diagnostic plane from -0.6 to $+1.5$ and from -1.2 to $+0.8$ (in log units) for the $[\text{FeII}]/\text{Bry}$ and H_2/Bry line ratios, respectively. The corresponding median(mode) ratios are $+0.18(0.16)$ and $+0.02(-0.04)$, respectively.
2. The two-dimensional distributions of the line ratios of LIRGs and nearby Seyferts partially overlap, with Seyferts showing on average larger values by factors ~ 2.5 and ~ 1.7 for the $[\text{FeII}]/\text{Bry}$ (4.9 vs. 1.9) and H_2/Bry (1.7 vs. 1.0) ratios, respectively.
3. We identified a range of line ratios for the different ionization/heating sources thanks to our integral field spectroscopy of well-resolved and spatially separated, high surface brightness, line emitting clumps: i) AGN dominated, ii) young stars dominated; and iii) supernovae dominated. These three heating mechanisms occupy mostly well-separated regions in the $\log([\text{FeII}]/\text{Bry}) - \log(\text{H}_2/\text{Bry})$ plane.
4. New areas in the near-IR diagnostic emission line plane are defined for different heating sources with the following limits in the $\log([\text{FeII}]/\text{Bry})$ and $\log(\text{H}_2/\text{Bry})$ ratios, respectively: AGN-dominated: $[-0.3, +1.5]$ and $[-0.3, +0.9]$; young stars-dominated: $[-0.4, +0.4]$ and $[-1.2, -0.1]$; and SNe-dominated: $[+0.2, +1.2]$ and $[-0.4, +0.4]$. Within these limits, the 2D distribution of the regions dominated by each of the mechanisms appears to cluster around linear relations given by: i) AGN-dominated: $\log([\text{FeII}]/\text{Bry}) = 1.009 - 1.312 \times \log(\text{H}_2/\text{Bry})$; ii) young stars-dominated: $\log([\text{FeII}]/\text{Bry}) = 0.238 + 0.476 \times \log(\text{H}_2/\text{Bry})$; and iii) SNe-dominated: $\log([\text{FeII}]/\text{Bry}) = 0.705 + 1.000 \times \log(\text{H}_2/\text{Bry})$.
5. We also identified the excitation conditions of the diffuse, extended ISM outside the bright clumps. The diffuse ISM occupies a large region that completely overlaps with that of the individual excitation mechanisms (i.e. AGN, young stars, and supernovae), indicating that its radiation/heating field is due to a mixture of the different ionization sources, weighted by their relative flux contribution and spatial distribution.
6. Compared with the median of the two-dimensional distribution, the integrated line ratios in LIRGs appear compatible with higher excitation conditions, i.e. towards AGNs. If this behaviour is general, it would have clear consequences when classifying high- z , star-forming galaxies based on their near-infrared integrated spectra. A similar situation could also happen with the optical emission line ratios that would deserve detailed exploration with current and future observatories like the *James Webb* Space Telescope.

Acknowledgements. L.C. acknowledge support from CNPq special visitor fellowship PVE 313945/2013-6 under the Brazilian program Science without Borders. L.C., J.P., and S.A. are supported by grants AYA2012-32295 and AYA2012-39408 from the Ministerio de Economía y Competitividad of Spain. ARA thanks CNPq for partial support through grant 307403/2012-2. AAH was partially supported by grant AYA2012-31447 from the Ministerio de Economía y Competitividad of Spain.

References

- Alonso-Herrero, A., Rieke, M. J., Rieke, G. H., & Shields, J. C. 2000, *ApJ*, **530**, 688
- Alonso-Herrero, A., Rieke, G. H., Rieke, M. J., et al. 2006, *ApJ*, **650**, 835
- Alonso-Herrero, A., Pereira-Santaella, M., Rieke, G. H., & Rigopoulou, D. 2012, *ApJ*, **744**, 2
- Baldwin, J. A., Phillips, M. M., & Terlevich, R. 1981, *PASP*, **93**, 5
- Bedregal, A. G., Colina, L., Alonso-Herrero, A., & Arribas, S. 2009, *ApJ*, **698**, 1852
- Bernard-Salas, J., Spoon, H. W. W., Charmandaris, V., et al. 2009, *ApJS*, **184**, 230
- Cardelli, J. A., Clayton, G. C., & Mathis, J. S. 1989, *ApJ*, **345**, 245
- Calzetti, D., Armus, L., Bohlin, R. C., et al. 2000, *ApJ*, **533**, 682
- Colina, L. 1993, *ApJ*, **411**, 565
- Colina, L., & Arribas, S. 1999, *ApJ*, **514**, 637
- Colina, L., Gonzalez Delgado, R., Mas-Hesse, J. M., & Leitherer, C. 2002, *ApJ*, **579**, 545
- Colina, L., Pereira-Santaella, M., Alonso-Herrero, A., Bedregal, A. G., & Arribas, S. 2012, *ApJ*, **749**, 116
- Dale, D. A., Roussel, H., Contursi, A., et al. 2004, *ApJ*, **601**, 813
- Dale, D. A., Cohen, S. A., Johnson, L. C., et al. 2009, *ApJ*, **703**, 517
- Davies, R. L., Kewley, L. J., Ho, I. T., & Dopita, M. A. 2014, *MNRAS*, **444**, 3961
- Diaz-Santos, T., Charmandaris, V., Armus, L., et al. 2010, *ApJ*, **723**, 993
- Emonts, B. H. C., Piqueras López, J., Colina, L., et al. 2014, *A&A*, **572**, A40
- Esquej, P., Alonso-Herrero, A., González-Martín, O., et al. 2014, *ApJ*, **780**, 86
- Förster Schreiber, N. M., Genzel, R., Lutz, D., Kunze, D., & Sternberg, A. 2001, *ApJ*, **552**, 544
- Genzel, R., Lutz, D., Sturm, E., et al. 1998, *ApJ*, **498**, 579
- González Delgado, R. M., Heckman, T., Leitherer, C., et al. 1998, *ApJ*, **505**, 174

- Graham, J. R., Wright, G. S., & Longmore, A. J. 1987, *ApJ*, **313**, 847
 Graham, J. R., Wright, G. S., & Longmore, A. J. 1990, *ApJ*, **352**, 172
 Greenhouse, M. A., Satyapal, S., Woodward, C. E., et al. 1997, *ApJ*, **476**, 105
 Groves, B., Nefs, B., & Brandl, B. 2008, *MNRAS*, **391**, L113
 Izotov, Y. I., Thuan, T. X., & Wilson, J. C. 2009, *ApJ*, **703**, 1984
 Jiménez-Bailón, E., Santos-Lleo, M., Mas-Hesse, J. M., et al. 2003, *ApJ*, **593**, 127
 Kauffmann, G., Heckman, T. M., Tremonti, C., et al. 2003, *MNRAS*, **346**, 1055
 Kewley, L. J., Dopita, M. A., Sutherland, R. S., Heisler, C. A., & Trevena, J. 2001, *ApJ*, **556**, 121
 Kewley, L. J., Groves, B., Kauffmann, G., & Heckman, T. 2006, *MNRAS*, **372**, 961
 Kewley, L. J., Maier, C., Yabe, K., et al. 2013, *ApJ*, **774**, L10
 Larkin, J. E., Armus, L., Knop, R. A., Soifer, B. T., & Matthews, K. 1998, *ApJS*, **114**, 59
 Levenson, N. A., Weaver, K. A., Heckman, T. M., Awaki, H., & Terashima, Y. 2005, *ApJ*, **618**, 167
 Martins, L. P., Rodríguez-Ardila, A., Diniz, S., Gruenwald, R., & de Souza, R. 2013, *MNRAS*, **431**, 1823
 Mazzalay, X., Saglia, R. P., Erwin, P., et al. 2013, *MNRAS*, **428**, 2389
 Monreal-Ibero, A., Arribas, S., & Colina, L. 2006, *ApJ*, **637**, 138
 Monreal-Ibero, A., Arribas, S., Colina, L., et al. 2010, *A&A*, **517**, A28
 Osterbrock, D. E., & Ferland, G. J. 2006, *Astrophysics of gaseous nebulae and active galactic nuclei*, 2nd. edn. (Sausalito, CA: University Science Books)
 Pereira-Santaella, M., Alonso-Herrero, A., Santos-Lleo, M., et al. 2011, *A&A*, **535**, A93
 Petric, A. O., Armus, L., Howell, J., et al. 2011, *ApJ*, **730**, 28
 Piqueras López, J., Colina, L., Arribas, S., Alonso-Herrero, A., & Bedregal, A. G. 2012, *A&A*, **546**, A64
 Piqueras López, J., Colina, L., Arribas, S., & Alonso-Herrero, A. 2013, *A&A*, **553**, A85
 Ramos Almeida, C., Alonso-Herrero, A., Esquej, P., et al. 2014, *MNRAS*, **445**, 1130
 Rich, J. A., Kewley, L. J., & Dopita, M. A. 2011, *ApJ*, **734**, 87
 Rich, J. A., Kewley, L. J., & Dopita, M. A. 2013, *Galaxy Mergers in an Evolving Universe*, **477**, 231
 Riffel, R., Rodríguez-Ardila, A., & Pastoriza, M. G. 2006, *A&A*, **457**, 61
 Riffel, R. A., & Storchi-Bergmann, T. 2011a, *MNRAS*, **411**, 469
 Riffel, R. A., & Storchi-Bergmann, T. 2011b, *MNRAS*, **417**, 2752
 Riffel, R. A., Storchi-Bergmann, T., Riffel, R., et al. 2013a, *MNRAS*, **429**, 2587
 Riffel, R. A., Storchi-Bergmann, T., & Winge, C. 2013b, *MNRAS*, **430**, 2249
 Rodríguez-Ardila, A., Pastoriza, M. G., Viegas, S., Sigut, T. A. A., & Pradhan, A. K. 2004, *A&A*, **425**, 457
 Rodríguez-Ardila, A., Riffel, R., & Pastoriza, M. G. 2005, *MNRAS*, **364**, 1041
 Sanders, D. B., & Mirabel, I. F. 1996, *ARA&A*, **34**, 749
 Sanders, D. B., Mazzarella, J. M., Kim, D.-C., Surace, J. A., & Soifer, B. T. 2003, *AJ*, **126**, 1607
 Spoon, H. W. W., Marshall, J. A., Houck, J. R., et al. 2007, *ApJ*, **654**, L49
 Storchi-Bergmann, T., McGregor, P. J., Riffel, R. A., et al. 2009, *MNRAS*, **394**, 1148
 Veilleux, S., & Osterbrock, D. E. 1987, *ApJS*, **63**, 295
 Veilleux, S., Kim, D.-C., Sanders, D. B., Mazzarella, J. M., & Soifer, B. T. 1995, *ApJS*, **98**, 171
 Veilleux, S., Kim, D.-C., & Sanders, D. B. 1999, *ApJ*, **522**, 113
 Wright, E. L. 2006, *PASP*, **118**, 1711
 Yuan, T. T., Kewley, L. J., & Sanders, D. B. 2010, *ApJ*, **709**, 884

Appendix A

The appendix presents in graphical form (Figs. A.1 to A.6), the emission line maps and distribution of the emission line ratios

in the $\log(\text{FeII}1.64 \mu\text{m}/\text{Br}\gamma) - \log(\text{H}_22.12 \mu\text{m}/\text{Br}\gamma)$ plane for the sample of LIRGs, excluding the prototypes that have already been discussed (Figs. 2 to 4). Notes on individual galaxies can be found elsewhere (Piqueras López et al. 2012).

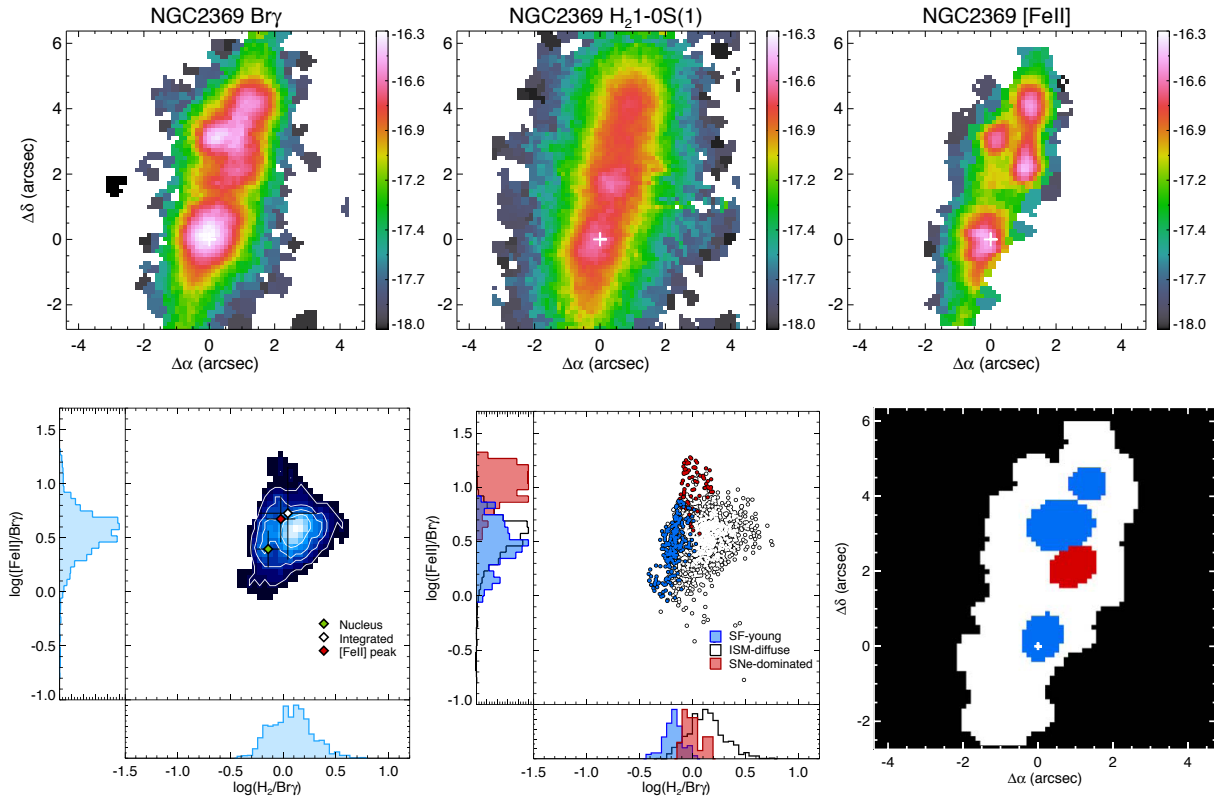


Fig. A.1. Emission line maps and near-IR diagnostic planes for NGC 2369. Colour-coded symbols as in Fig. 2.

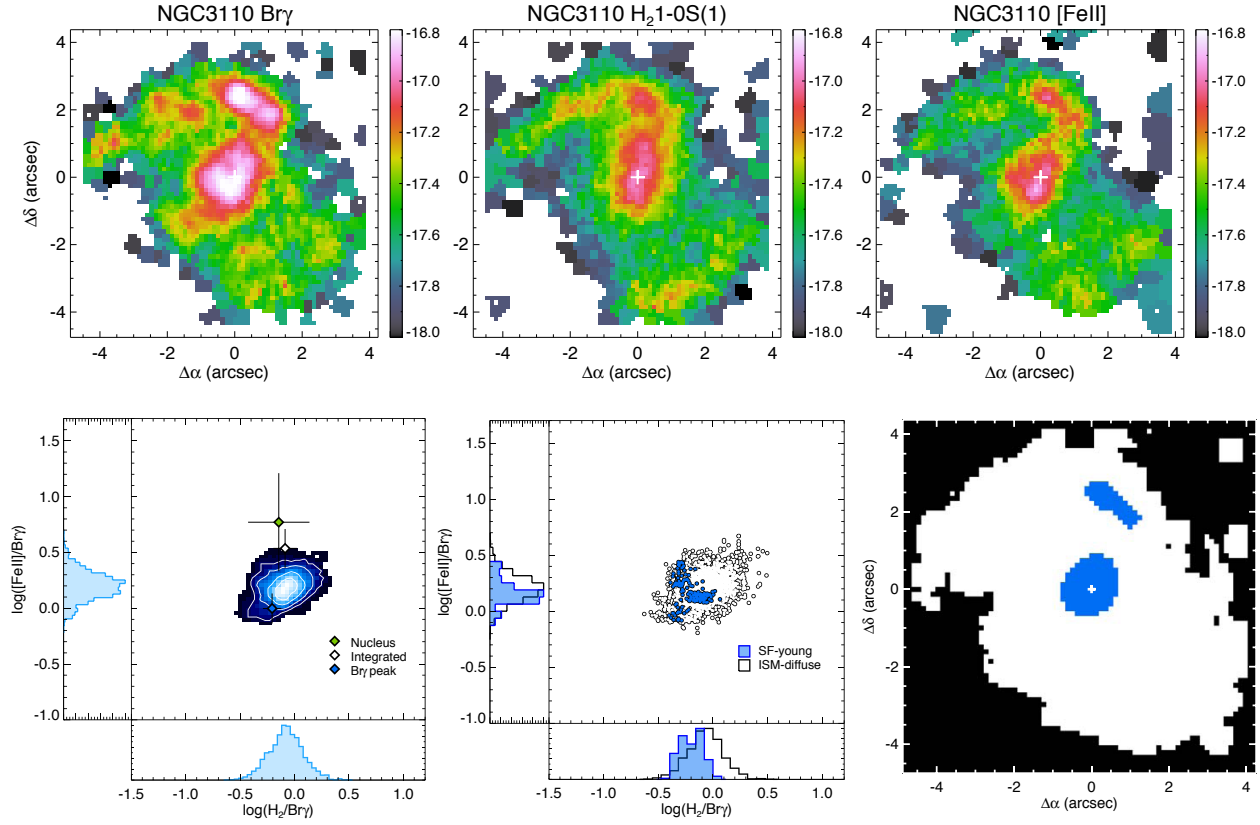


Fig. A.2. Emission line maps and near-IR diagnostic planes for NGC 3110. Colour-coded symbols as in Fig. 2.

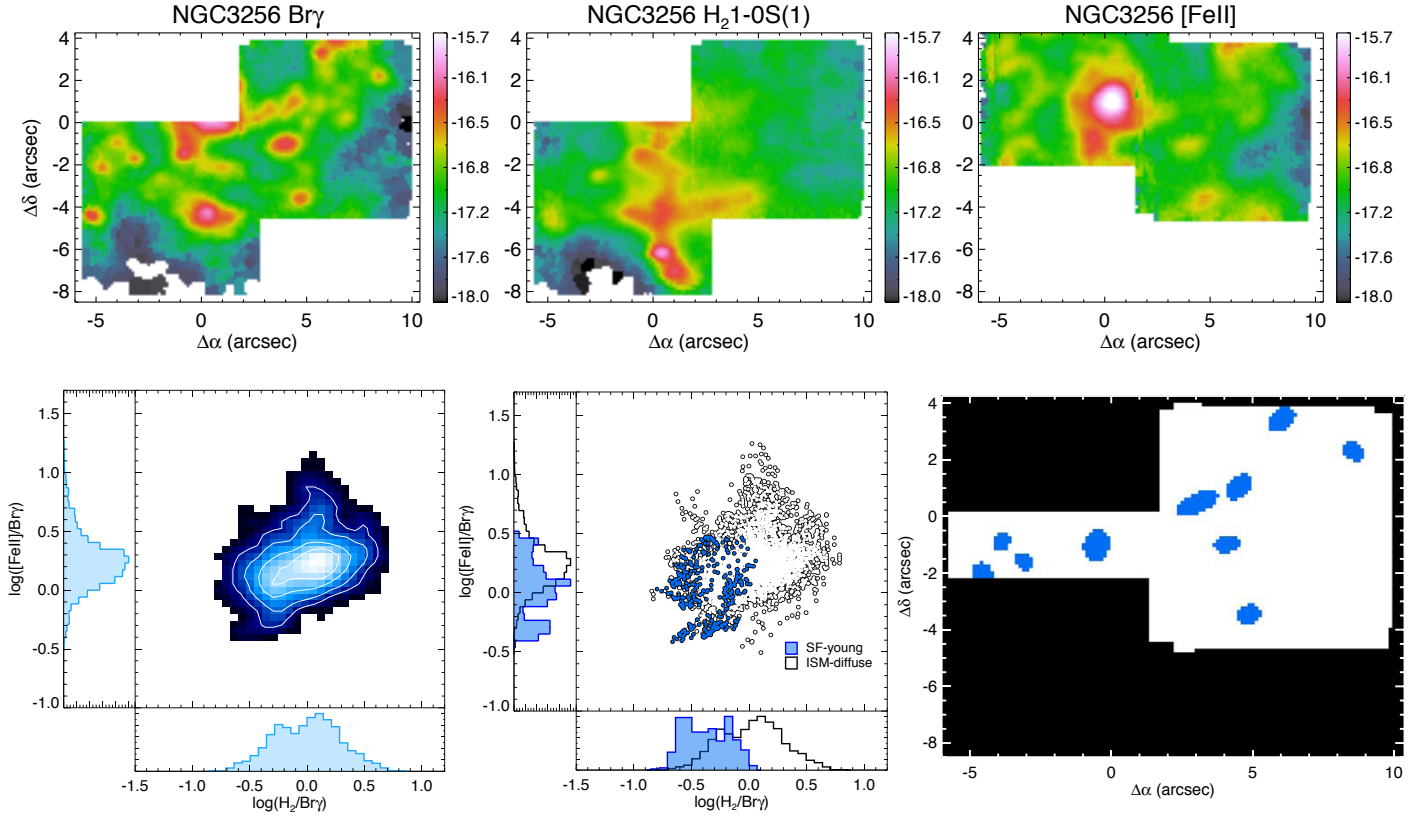


Fig. A.3. Emission line maps and near-IR diagnostic planes for NGC 3256. Colour-coded symbols as in Fig. 2.

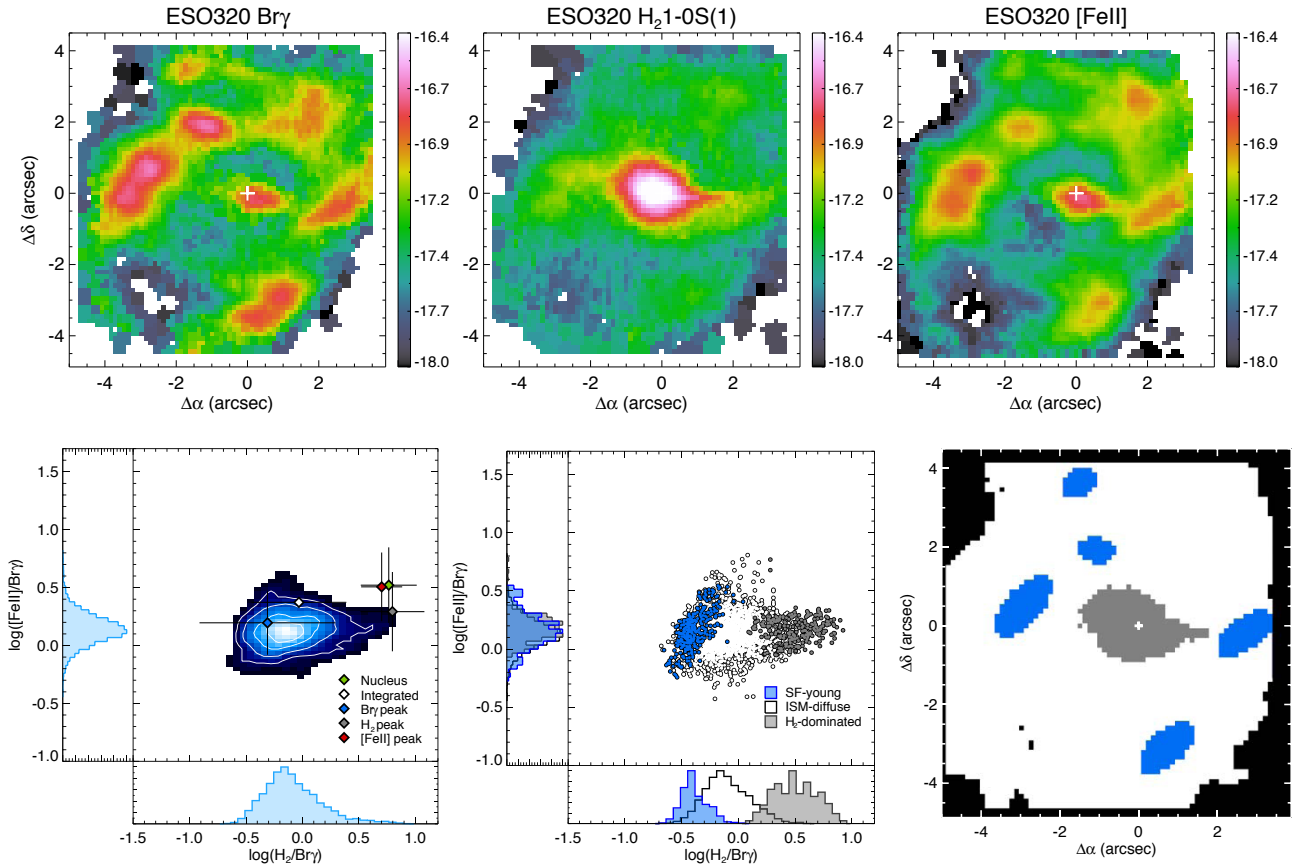


Fig. A.4. Emission line maps and near-IR diagnostic planes for ESO320–G030. Colour-coded symbols as in Fig. 2.

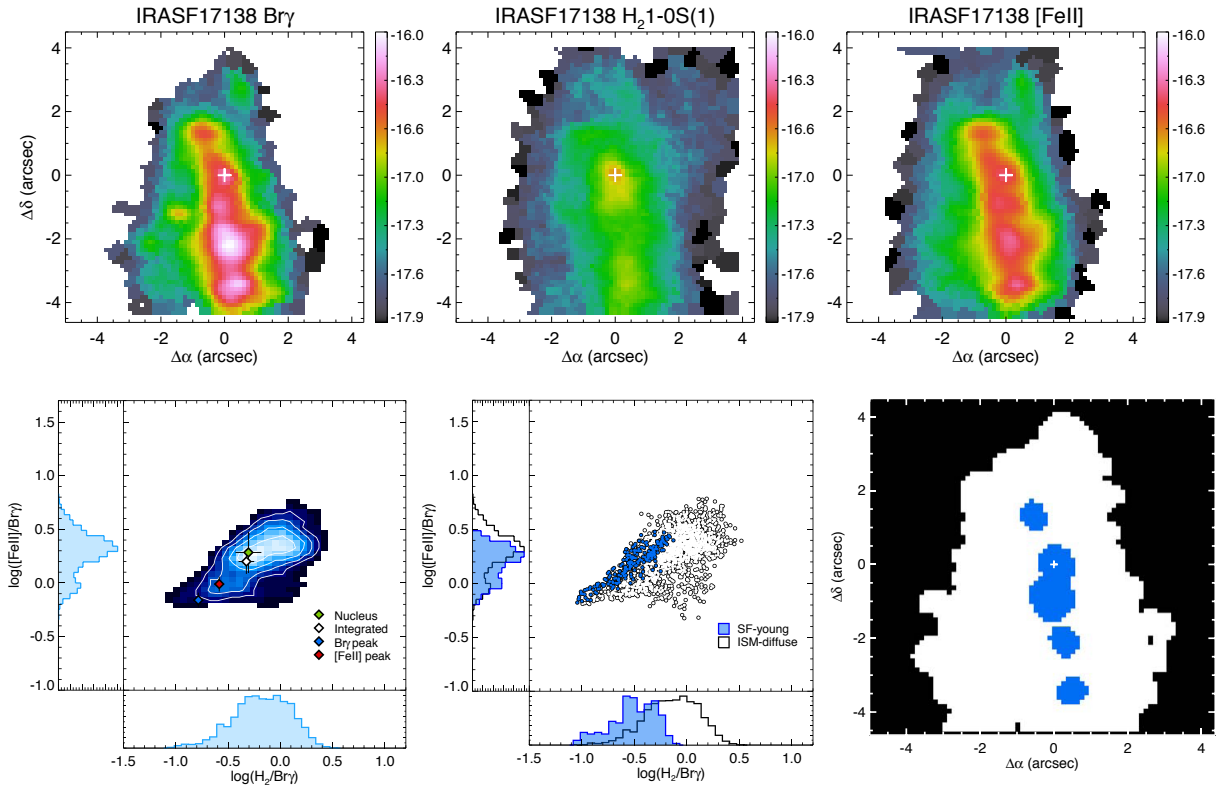


Fig. A.5. Emission line maps and near-IR diagnostic planes for IRASF 17138–1017. Colour-coded symbols as in Fig. 2.

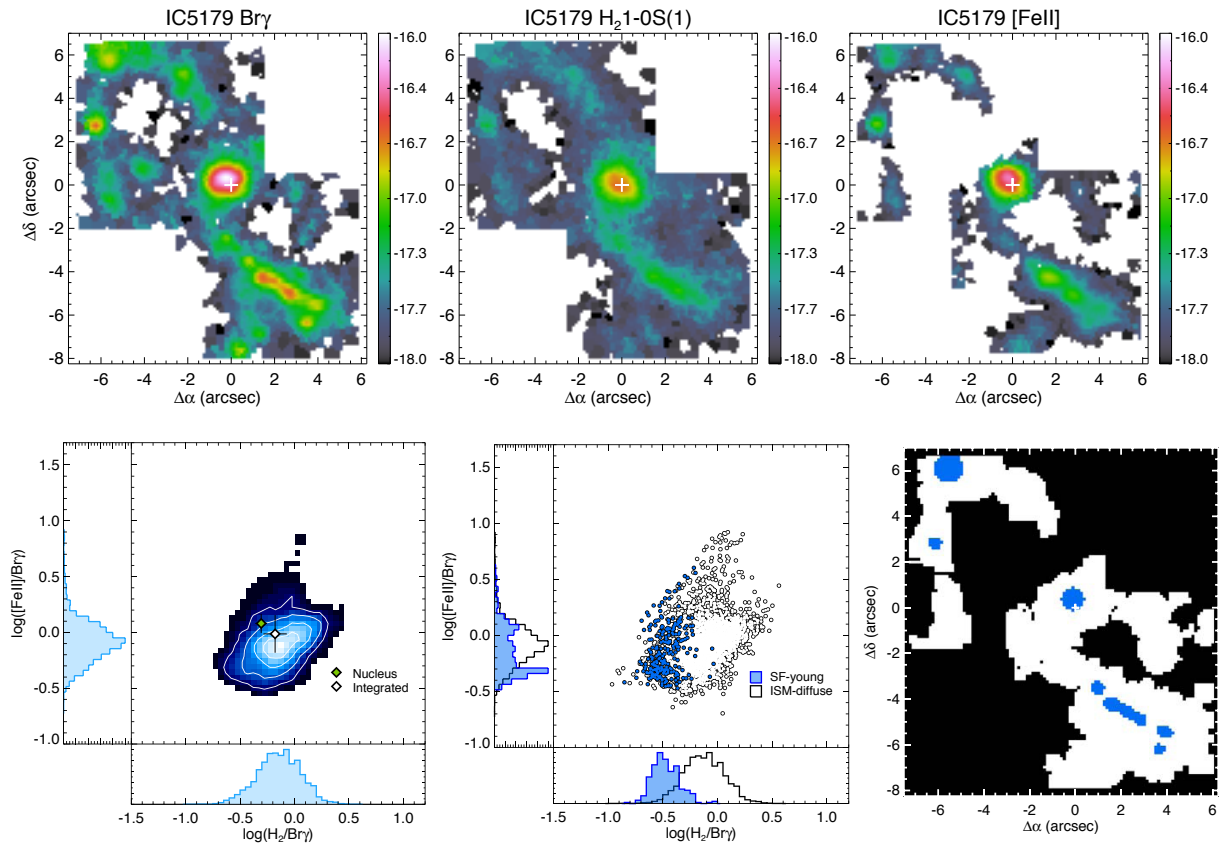


Fig. A.6. Emission line maps and near-IR diagnostic planes for IC 5179. Colour-coded symbols as in Fig. 2.