

Division - Soil Use and Management | Commission - Soil and Water Management and Conservation

# Daycent Simulation of Methane Emissions, Grain Yield, and Soil Organic Carbon in a Subtropical Paddy Rice System

**Douglas Adams Weiler<sup>(1)\*</sup>, Carlos Gustavo Tornquist<sup>(1)</sup>, Tiago Zschornack<sup>(1)</sup>, Stephen Michael Ogle<sup>(2)</sup>, Filipe Selau Carlos<sup>(3)</sup> and Cimélio Bayer<sup>(1)</sup>**

<sup>(1)</sup> Universidade Federal do Rio Grande do Sul, Faculdade de Agronomia, Departamento de Solos, Porto Alegre, Rio Grande do Sul, Brasil.

<sup>(2)</sup> Colorado State University, Natural Resource Ecology Laboratory, Fort Collins, Colorado, United States.

<sup>(3)</sup> Instituto Rio Grandense do Arroz, Cachoeirinha, Rio Grande do Sul, Brasil.

**ABSTRACT:** The DayCent ecosystem model, widely tested in upland agroecosystems, was recently updated to simulate waterlogged soils. We evaluated the new version in a paddy rice experiment in Southern Brazil. DayCent was used to simulate rice yield, soil organic carbon (SOC), and soil CH<sub>4</sub> fluxes. Model calibration was conducted with a multiple-year dataset from the conventional tillage treatment, followed by a validation phase with data from the no-tillage treatment. Model performance was assessed with statistics commonly used in modeling studies: root mean square error (RMSE), model efficiency (EF), and mean difference (M). In general, DayCent slightly underestimated rice yields under no-tillage (by 0.07 Mg ha<sup>-1</sup>, or 9.2 %) and slightly overestimated soil C stocks, especially in the first years of the experiment. A comparison of observed and simulated CH<sub>4</sub> daily fluxes showed that DayCent could simulate the general patterns of soil CH<sub>4</sub> fluxes with slight discrepancies. Daily soil CH<sub>4</sub> fluxes were overestimated by 0.43 kg ha<sup>-1</sup> day<sup>-1</sup> (12 %). Growth-season CH<sub>4</sub> emissions under no-tillage were also somewhat overestimated (11 % or 45.29 kg ha<sup>-1</sup>). We conclude that DayCent simulated SOC, rice yield, and CH<sub>4</sub> with some inaccuracies, but the overall performance was considered adequate. However, the model failed to represent the observed potential of no-tillage to mitigate CH<sub>4</sub> emissions, possibly because model algorithms could not capture the actual field conditions derived from no-tillage management, such as soil redox potential, plant senescence, and surface placement of plant residue.

**Keywords:** modeling, soil potential redox, flooded soil, greenhouse gas, soil tillage.

\* Corresponding author:

E-mail: douglasweiler@yahoo.com.br

**Received:** August 2, 2017

**Approved:** January 23, 2018

**How to cite:** Weiler DA, Tornquist CG, Zschornack T, Ogle SM, Carlos FS, Bayer C. Daycent simulation of methane emissions, grain yield, and soil organic carbon in a subtropical paddy rice system. Rev Bras Cienc Solo. 2018;42:e0170251.

<https://doi.org/10.1590/18069657rbc20170251>

**Copyright:** This is an open-access article distributed under the terms of the Creative Commons Attribution License, which permits unrestricted use, distribution, and reproduction in any medium, provided that the original author and source are credited.



## INTRODUCTION

Rice is a major crop in southern Brazil, where the state of Rio Grande do Sul leads the country in cropped area (approximately 1.1 million ha) and yields (Conab, 2017). For many years, soil management for flooded rice production included deep tillage with moldboard or disc plows followed by multiple harrow operations to obtain a level seeding surface. More recently, however, research and technical assistance have helped to develop and introduce the no-tillage system in southern Brazil rice fields with a view to increasing soil quality, reducing operating costs, and optimizing seeding schedules (Sosbai, 2016).

Soil organic matter (SOM) dynamics in flooded production systems, which is associated with  $\text{CH}_4$  fluxes, is a crucial factor for sustainable flooded rice production. In this anoxic soil environment, physical protection of SOM in soil aggregates is less effective in stabilizing SOM than in aerobic soils, possibly by the effect of water decreasing aggregate stability during the flooded rice growing season (Nascimento et al., 2009). Consequently, SOC is increased to a very small extent, if any, by the adoption of no-tillage in irrigated rice fields (Nascimento et al., 2009; Rosa et al., 2011; Ghimire et al., 2012; Das et al., 2014; Huang et al., 2016).

Flooded rice boosts  $\text{CH}_4$  production and paddy rice fields are among the major sources of anthropogenic  $\text{CH}_4$  released to the atmosphere (Le Mer and Roger, 2001). The global warming potential of  $\text{CH}_4$  is roughly 28 times greater than that of  $\text{CO}_2$ ; also, atmospheric  $\text{CH}_4$  levels have risen by 150 % since 1750 (IPCC, 2013), with approximately 60 % of the global soil-to-atmosphere  $\text{CH}_4$  emissions coming from anthropogenic sources (WMO, 2016).

Research conducted to assess soil  $\text{CH}_4$  fluxes in southern Brazil has identified some strategies to mitigate soil  $\text{CH}_4$  emissions in irrigated rice fields. Such strategies include no-tillage (Bayer et al., 2014), anticipated tillage (Bayer et al., 2015), and intermittent irrigation (Moterle et al., 2013; Zschornack et al., 2016), none of which decrease rice yields relative to traditional soil and water management practices. However, the high variability of soils, climate, and production systems encompassed by the 1.3 million ha of cropland in southern Brazil would make on-site quantification of  $\text{CH}_4$  to assess site-specific variables a costly, labor-intensive task. In this context, simulation models provide useful research tools for expanding and integrating soil  $\text{CH}_4$  emission estimation.

DayCent is a daily-step simulation model developed from the core algorithms of the well-known Century Soil Organic Matter model (Metherell et al., 1993). The model has been widely tested in upland soils (Plaza-Bonilla et al., 2014; Scheer et al., 2014; Congreves et al., 2015; Migliorati et al., 2015; Weiler et al., 2017). The model includes submodels for plant yield, crop residues and organic matter, soil water and temperature dynamics, and C and N gas fluxes. Plant yield is a function of genetic potential of the crop, nutrient availability, and soil moisture and temperature. Carbon and N are allocated to leaves, stems, and roots, and soil inflows are assumed to be controlled by the lignin-to-N ratio and by soil moisture, texture, and temperature. Organic carbon and nutrients in soil are divided into pools based on residence time, namely: active (0.5-1.0 yr), slow (10-50 yr), and passive (1,000-5,000 yr). Recently, a methanogenesis submodel was included in the original algorithms. Soil  $\text{CH}_4$  fluxes in flooded rice paddies are assumed to be controlled by carbon substrate availability, plant growth, and soil redox potential and temperature. Early studies testing this expanded version showed adequate model performance in simulating trends in SOC content and  $\text{CH}_4$  fluxes in agricultural regions of China (Cheng et al., 2013, 2014).

In this study, we assessed the ability of DayCent to simulate SOC, grain yield, and daily and seasonal soil  $\text{CH}_4$  emissions in a subtropical rice cropping system in southern Brazil using data from a long-term field experiment.

## MATERIALS AND METHODS

### Experimental site

This study was conducted using data from a long-term field experiment established at the Rice Research Station of the *Instituto Riograndense do Arroz* - IRGA (Rice Institute of Rio Grande do Sul) in the municipality of Cachoeirinha (29.9° S; 51.1° W), Rio Grande do Sul, Brazil in 1994. The soils at this site are Gleysols (*Gleissolo Háplico*). The climate is humid subtropical (*Cfa*) according to the updated Köppen-Geiger classification system (Peel et al., 2007), characterized by warm summers (mean temperature 25 °C), cool winters (average 15 °C), and mean annual rainfall of 1,350 mm evenly distributed throughout the year.

### Field experiment

The experiment was set up to investigate rice yields under contrasting soil tillage systems - conventional tillage and no-tillage - arranged in a randomized block design with three replicates. The cropping system was paddy rice as a summer crop and self-seeding ryegrass (*Lolium multiflorum* L.) as a cover crop without irrigation during the winter months. The conventional tillage treatment involved disking and two disk harrow operations in the spring prior to rice planting. In the no-tillage treatment, the ryegrass cover crop was desiccated with a glyphosate-based herbicide in the spring. After that, the standing biomass was chopped and rice was planted through the crop residues by using a no-till seed drill. In the rice season, experimental plots (28 × 40 m) were flooded approximately 20 days after planting and kept flooded under a 0.10-m water layer until about ten days before harvest. The soil and crop management schedules used are presented in table 1. Additional details regarding this experiment can be found in Bayer et al. (2014).

**Table 1.** Management practices in the rice growing seasons

Management	Season								
	2002/03 <sup>(1)</sup>	2003/04 <sup>(1)</sup>	2004/05	2005/06	2006/07	2007/08 <sup>(1)</sup>	2008/09	2009/10 <sup>(1)</sup>	2011/12 <sup>(1)</sup>
Ryegrass biomass	Oct 18	Sep 30		Sep 22	Sep 27	Sep 12	Sep 16	Aug 31	Oct 15
Baseline N (kg ha <sup>-1</sup> )	Dec 10 (10) <sup>(2)</sup>	Nov 8 (15)	Nov 20 (15)	Nov 3 (15)	Oct 10 (20)	Oct 25	Nov 23 (20)	Oct 24 (15)	Oct 15
Rice seeding	Dec 10	Nov 8	Nov 20	Nov 3	Oct 10	Oct 25 (20)	Nov 23	Oct 24	Oct 15 (20)
Soil flooding	Dec 30	Dec 2	Dec 14	Nov 29	Nov 9	Nov 16	Dec 14	Nov 18	Nov 11
N fertilization (kg ha <sup>-1</sup> )	Dec 30 (50)	Dec 2 (55)	Dec 14 (80)	Nov 29 (80)	Nov 9 (80)	Nov 16 (67)	Dec 14 (100)	Nov 18 (100)	Nov 11 (100)
N fertilization (kg ha <sup>-1</sup> )	Jan 31 (40)	Dec 29 (25)	Jan 14 (40)	Jan 6 (40)	Dec 12 (40)	Dec 19 (33)	Jan 14 (50)	Dec 21 (40)	Dec 7 (50)
N fertilization (kg ha <sup>-1</sup> )	Feb 19 (30)	Jan 5 (50)	-	-	-	-	-	-	-
Soil drainage	Apr 1	Mar 8	Feb 21	Feb 21	Jan 30	Feb 18	Feb 22	Feb 19	Feb 6
Harvest	Apr 5	Mar 23	Mar 28	Mar 10	Feb 14	Mar 5	Mar 27	Mar 1	Feb 16

<sup>(1)</sup> Rice growing systems reported by Bayer et al. (2014). <sup>(2)</sup> The values in brackets mean applied nitrogen rates. - = no fertilizer-N application.

## Experimental dataset

Plant, soil, and greenhouse data were obtained from previous studies conducted in the same experiment (Bayer et al., 2014). Grain yield was determined with a plot harvester in the nine rice-growing seasons from 2002 to 2012 (9th to 19th year of the experiment). Yields for 2002/2003, 2003/2004, 2007/2008, 2009/2010, and 2011/2012 have already been reported by Bayer et al. (2014). Baseline SOC data were obtained from Costa (2005) and Nascimento et al. (2009). Additionally, a soil sampling survey was conducted in 2015 to expand the SOC dataset under both tillage systems. Soil samples were obtained from the 0.00-0.20 m soil layer, and soil carbon content was determined by dry combustion on a Shimadzu TOC-VCSH analyzer. Carbon stocks were estimated as equivalent soil mass, taking the soil under conventional tillage as a reference. Additional input data for the DayCent model, such as soil hydrological and physical properties for this soil class (Gleysol), were obtained from Uhde (2009).

Daily meteorological data for the 1964-1999 period were obtained from a weather station in Porto Alegre, 13 km from the experimental site, and data since 2000 from an automatic weather station at the research station.

Daily soil CH<sub>4</sub> fluxes, measured in five rice-growing seasons (2002/2003, 2003/2004, 2007/2008, 2009/2010, and 2011/2012), were evaluated by the static closed chamber method. Briefly, the chambers consisted of a 0.60 × 0.60 × 0.20 m aluminum top and an aluminum base of the same size. Chamber bases were driven 0.05 m depth into the soil before permanent flooding and remained in it throughout the growing season. Each base had an open bottom and sealable channels on the sides to allow irrigation water to flow freely, the channels being sealed during air sampling events. Each base covered three rice plant rows. Additional, 0.20 or 0.30 m aluminum extensions were stacked on the bases as the rice plants grew taller, and the expanded chamber volume was used in greenhouse gas emission calculations. Air was drawn with polypropylene syringes, transferred to the Biogeochemistry Laboratory at UFRGS and analyzed for CH<sub>4</sub> concentration in a Shimadzu gas chromatograph. Daily CH<sub>4</sub> fluxes were calculated according to Bayer et al. (2014) and seasonal emissions by trapezoidal integration of daily fluxes throughout the growing seasons. Details regarding air sampling, analysis, and calculation of CH<sub>4</sub> fluxes and seasonal emissions are available in Bayer et al. (2014) and Zschornack et al. (2016).

## Model initialization, calibration, and validation

A model spin-up simulation of 6,000 years using natural grassland under moderate grazing was conducted to initialize DayCent (Parton et al., 1987; Del Grosso et al., 2011). This initial step was followed by a baseline simulation of paddy rice cropping for 50 years, consistent with site historical records from the Rice Research Station.

Model calibration was conducted with SOC, rice grain yield, and soil CH<sub>4</sub> flux data from the conventional tillage treatments, and data from the no-tillage system were used to validate the model. The calibration step involved multiple model runs, inspecting output, and iterative modification of the default biomass production parameter PRDX(1) of rice and ryegrass in the CROP.100 file until SOMSC (SOC output variable) matched measured SOC stocks. Additional parameterization consisted of changes in the root parameter (FREXUD) that determine root C exudates, from default 0.45 to 0.60 (Cao et al., 1995).

## Statistical tests

This modeling exercise was evaluated (both calibration and validation steps) using statistics commonly applied in this context (Smith et al., 1997): root mean square error (RMSE, Equation 1), model efficiency (EF, Equation 2), and mean difference (M, Equation 3), with a t-test used to assess significant differences in M (Equation 4). The equations used to calculate these statistics are the following:

$$RMSE = \sqrt{\frac{\sum_{i=1}^n (Si - Oi)^2}{n}} \quad \text{Eq. 1}$$

$$EF = \frac{\sum_{i=1}^n (Oi - Si)^2}{\sum_{i=1}^n (Oi - \bar{O})^2} \quad \text{Eq. 2}$$

$$M = \sum_{i=1}^n \frac{(Si - Oi)}{n} \quad \text{Eq. 3}$$

$$t = \frac{M \times \sqrt{n}}{\sqrt{\sum_{i=1}^n [(Oi - Si) - M]^2 / (n-1)}} \quad \text{Eq. 4}$$

in which  $O_i$  denotes the observed and  $S_i$  simulated values;  $\bar{O}$  is the mean of the observed data; and  $n$  is the number of measurements. Positive  $M$  values indicate that the model underestimated the observed values, whereas negative  $M$  values indicate overestimation. If the  $t$ -value is greater than the critical two-tailed 2.5 %  $t$ -value, the simulations have a significant positive or negative bias (depending on the  $M$  calculated). In addition, observed and simulated data from conventional tillage and no-tillage were visually compared in plots highlighting 1:1 lines.

## RESULTS AND DISCUSSION

### Calibration

The iterative calibration procedure improved DayCent performance in this southern Brazilian paddy rice system, assessed by statistical tests on simulated and measured rice yield, SOC, and  $CH_4$  fluxes (Table 2), in comparison to initial runs with the default parameters.

### Validation

In the following section we present and discuss simulation of the no-tillage treatment that was used to validate application of the model in paddy rice systems in southern Brazil.

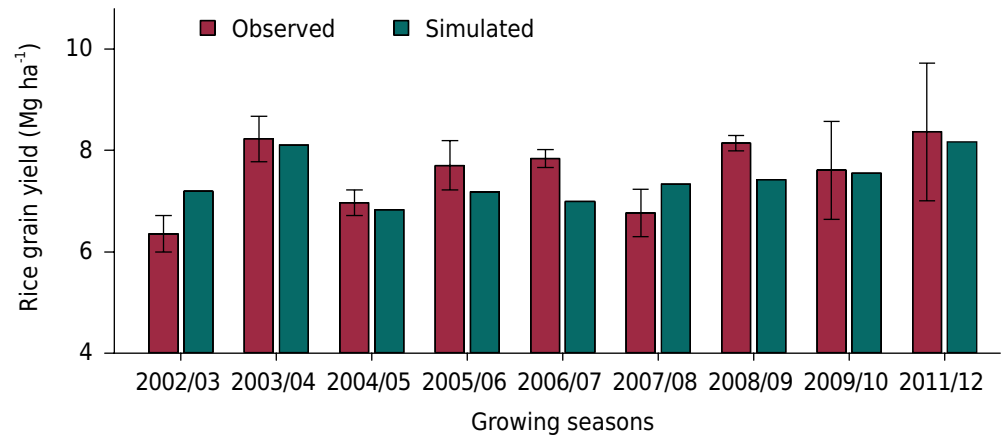
### Rice yields

Simulated rice yields under no-tillage were compared with observed data (Figures 1 and 2). DayCent slightly underestimated rice yields, by  $0.07 \text{ Mg ha}^{-1} \text{ yr}^{-1}$  (9.2 %) on average, without significant bias (Table 3). Similar studies in China were also able to simulate yield adequately (Stehfest et al., 2007; Cheng et al., 2013). As the efficiency statistics indicated acceptable performance, the results suggest that DayCent can accurately estimate rice yield in flooded soils in southern Brazil. Accurate simulation of plant biomass is crucial to estimate soil  $CH_4$  emissions because carbohydrate exudation from roots, the major labile C source driving  $CH_4$  emissions, is closely related to rice biomass (Cao et al., 1995; Cheng et al., 2013).

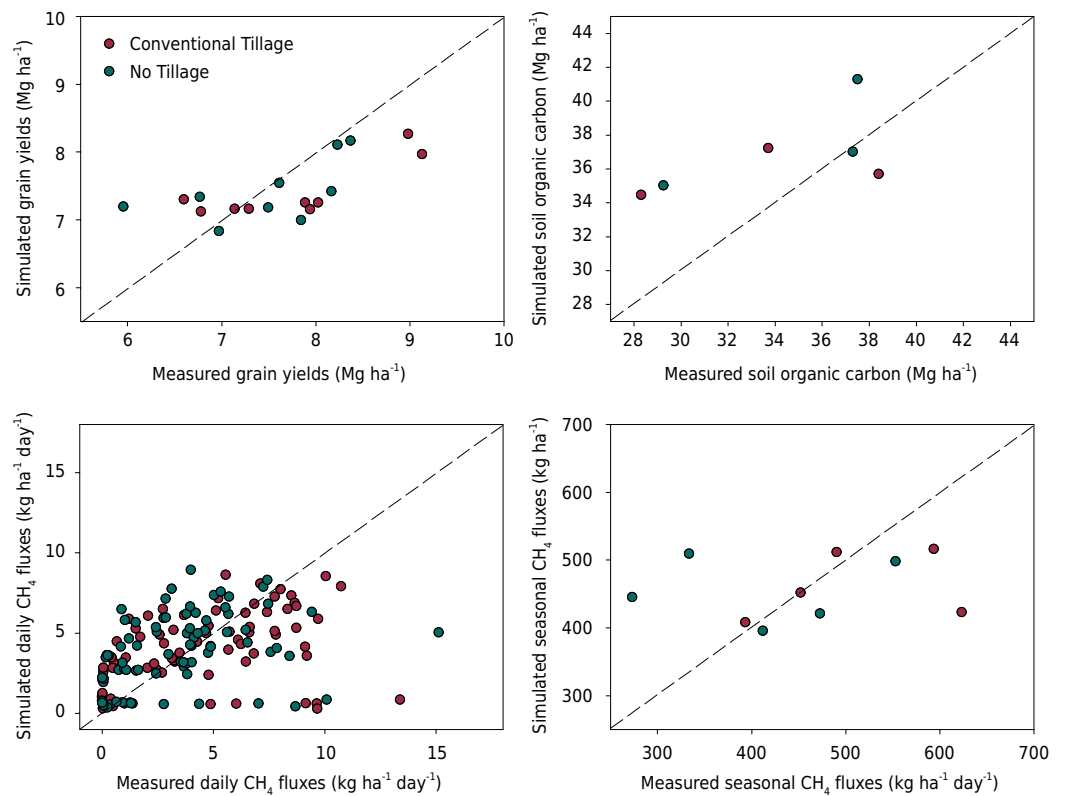
**Table 2.** Statistical analysis of simulated and observed parameters under conventional tillage treatment (model calibration) in a long-term experiment at the Rice Research Station in southern Brazil

Statistics	Calibration parameters			
	Rice yield	SOC	Daily $CH_4$ flux	Seasonal $CH_4$ flux
	Mg ha <sup>-1</sup>		kg ha <sup>-1</sup>	
RMSE	0.67	4.38	3.21	96.59
M	0.35	-2.34	0.47	48.13
$t$ -test	ns	ns	ns	ns
		(-∞ to 1)		
EF	0.37	-0.13	0.09	-0.25

ns = non-significant ( $p < 0.05$ ). RMSE = root mean square error; M = mean difference; EF = model efficiency.



**Figure 1.** Observed and simulated rice grain yields under a no-tillage system in a long-term experiment in southern Brazil. Error bars represent standard deviations.



**Figure 2.** Comparison of observed and simulated rice grain yields, soil carbon, daily CH<sub>4</sub> fluxes, and seasonal CH<sub>4</sub> emissions under conventional and no-tillage.

**Table 3.** Statistical analysis of simulated and observed parameters under no-tillage treatment (model validation) in a long-term experiment at the Rice Research Station in southern Brazil

Statistics	Validation parameters			
	Rice Yield	Soil Carbon	Daily CH <sub>4</sub> flux	Seasonal CH <sub>4</sub> flux
	Mg ha <sup>-1</sup>		kg ha <sup>-1</sup>	
RMSE	0.60	3.99	3.00	115.45
M	0.07	-3.10	-0.43	-45.29
t-test	ns	ns	ns	ns
	(-∞ to 1)			
EF	0.35	-0.08	-0.06	-0.34

ns = non-significant ( $p < 0.05$ ). RMSE = root mean square error; M = mean difference; EF = model efficiency.

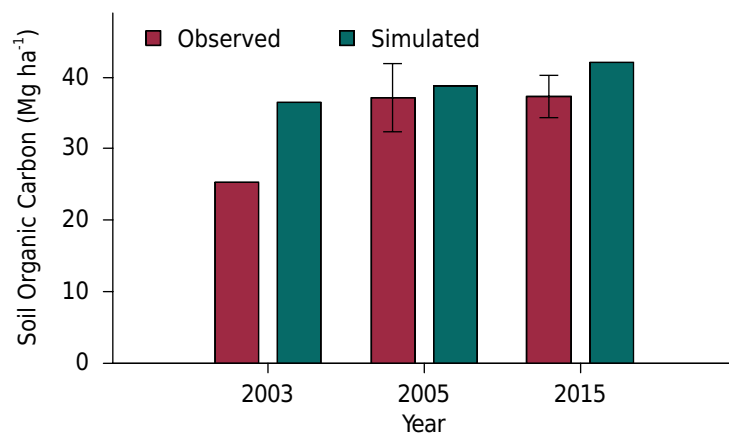
### Soil organic carbon

Soil organic carbon stocks measured under the no-tillage treatment increased from 24 to 36 Mg ha<sup>-1</sup> in 12 years, whereas the simulated SOC stocks increased from 36.7 to 42.2 Mg ha<sup>-1</sup> (Figure 3). DayCent overestimated soil C stocks especially in the first years of the experiment (Table 3). The current SOC stocks observed (2015) corroborate what has been observed in previous studies on tillage systems in paddy rice: an increase in SOC in the topsoil, without significant differences across tillage systems (Nascimento et al., 2009; Cheng-Fang et al., 2012; Huang et al., 2016). Excess water in rice paddies may decrease physical protection of organic matter in soil aggregates in no-tilled flooded soils (Nascimento et al., 2009).

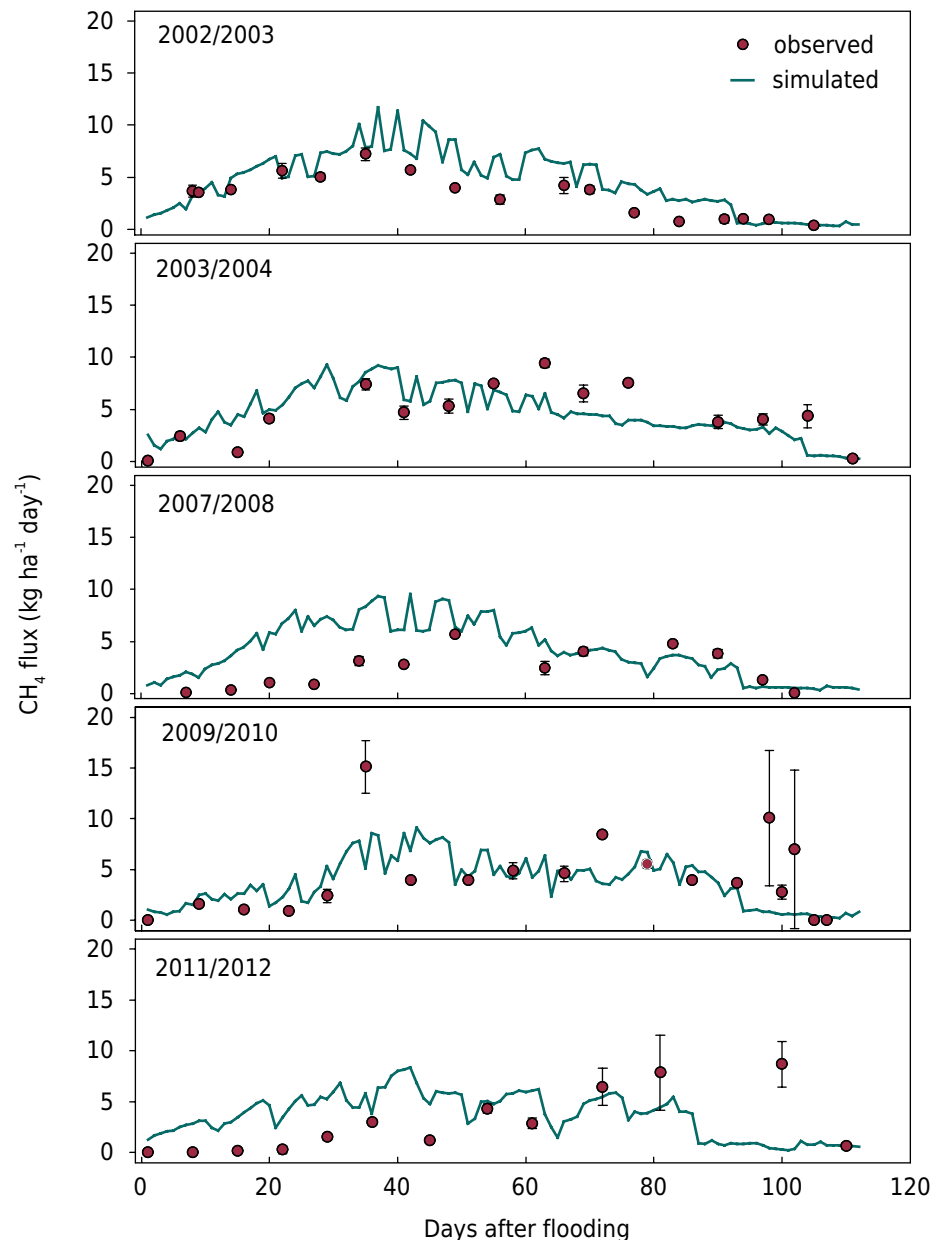
Earlier studies have shown that Century and DayCent were able to successfully model SOC in flooded environments (Chimner et al., 2002; Cheng et al., 2014). Cheng et al. (2014) was not able to adequately simulate SOC changes in Chinese rice paddies, most likely due to uncertainties in the experimental dataset (e.g., incomplete management history). This difficulty also applies to our study: model calibration could be much improved with detailed soil use and management information predating the 1990s. In any case, DayCent is more sensitive to recent management, so the absence of longer-term historical data on land use and management at the experiment site is not critical to model crop yield (as shown above) and soil CH<sub>4</sub> emissions (Del Grosso et al., 2011), which is the most important objective of this research effort.

### Methane fluxes

A comparison of observed and simulated soil CH<sub>4</sub> daily fluxes showed DayCent to effectively simulate the general patterns of soil CH<sub>4</sub> fluxes, with only slight discrepancies (Figure 4). The model overestimated soil CH<sub>4</sub> daily fluxes by 0.43 kg ha<sup>-1</sup> day<sup>-1</sup> (12 %) under no-tillage, without significant bias (Table 3). It is noteworthy that the simulated soil CH<sub>4</sub> fluxes under no-tillage followed almost identical trajectories in comparison with simulated soil CH<sub>4</sub> fluxes under conventional tillage (data not shown). It has been reported that flooded rice systems under no-tillage have lower CH<sub>4</sub> emissions (Bayer et al., 2014). The differences between observed and simulated daily soil CH<sub>4</sub> fluxes were especially marked in three of the five rice growing seasons (2007/2008, 2009/2010, and 2011/2012), when the model failed to capture the observed increase in soil CH<sub>4</sub> emissions (Figure 4). This underperformance of the model in reproducing expected lower soil CH<sub>4</sub> fluxes under no-tillage might be explained by a combination of effects related to plant senescence, and soil redox potential which might have impaired DayCent performance at the end of the growing season, as we discuss below.



**Figure 3.** Observed and simulated soil organic carbon (SOC) from flood irrigated rice under a no-tillage system in a long-term experiment in southern Brazil. Error bars represent standard deviations.



**Figure 4.** Simulated and observed daily soil methane ( $\text{CH}_4$ ) fluxes in paddy fields under a no-tillage system in a long-term experiment in southern Brazil. Error bars represent standard deviations.

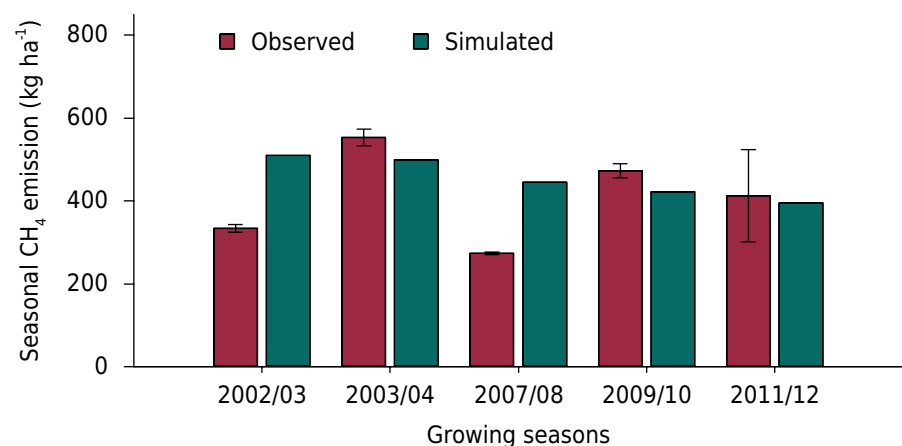
According to Bayer et al. (2014), increased C inputs from root exfoliation and plant senescence may cause  $\text{CH}_4$  emissions to peak at the end of the growing season. DayCent includes parameters to determine root death rate under water stress conditions and shoot fractions dying during plant senescence; however, it does not allow one to assess C-root additions at the end of the rice life cycle. Also, soil redox potential at the end of the growing season may have been inaccurately represented by the model. Thus, the function used to simulate irrigation suppression and establish soil saturation controlled by rainfall and irrigation (FLOD 1) estimated an immediate change in redox potential from -250 to -20 mV. However, rainfall events at the end of the rice growing season in the above-mentioned years may have caused soil redox potential to remain in the negative region and enhanced  $\text{CH}_4$  production in combination with greater root C exudation. Also, as suggested by Bayer et al. (2014), the high soil  $\text{CH}_4$  fluxes observed after soil drainage may have resulted from the release of gas previously trapped in inundated soil, which was not accurately simulated by DayCent.



When growing-season  $\text{CH}_4$  emissions were evaluated (Figures 5 and 2), the model also overestimated emissions (11.0 %, or  $45.29 \text{ kg ha}^{-1}$ ), with no significant bias (Table 3), mostly due to large mismatches of  $\text{CH}_4$  emissions in two growing seasons (2002/2003 and 2007/2008). In the other three seasons, the simulations were quite accurate in comparison with the observed values. Thus, DayCent was unable to represent the 21 % reduction in soil  $\text{CH}_4$  emissions under no-tillage previously reported by Bayer et al. (2014) in the same experiment. Only a 2 % mitigation of  $\text{CH}_4$  emissions from no-tillage in this 5-year period was simulated. In a meta-analysis of  $\text{CH}_4$  emissions in Chinese rice fields, Feng et al. (2013) also reported that no-tillage could reduce  $\text{CH}_4$  emissions by 26 % in comparison to conventional tillage. Li et al. (2011) attributed the lower  $\text{CH}_4$  emissions in no-tillage system to higher soil bulk density and lower dissolved organic carbon content, which could restrict substrate availability for methanogenesis. We analyzed DayCent output and noted that it correctly simulated higher readily-decomposable C (METABC output variable) in conventional tillage treatments but only small differences in  $\text{CH}_4$  emissions between soil tillage systems. This suggests that another mechanism that could reduce  $\text{CH}_4$  emissions under no-tillage may not be accurately represented by the model, and the inaccuracy may have resulted from the inability of the model to capture the influence of tillage systems on soil redox potential and of the location of labile C input by crop residues under no-tillage.

In general, DayCent estimated a more negative soil redox potential under no-tillage (output variables not shown), owing to the increase in SOC content associated with this system. However, Bayer et al. (2014) showed in a greenhouse study that the soil redox potential was lower when crop residues were mixed with soil than when they were left at the soil surface. Thus, incorporating crop residues into anaerobic subsurface soil layers under conventional tillage potentially increases methanogenic activity and leads to higher soil  $\text{CH}_4$  emissions. With no-tillage, however, crop residues are kept on the soil surface, where  $\text{O}_2$  diffusion from the atmosphere and rice aerenchym facilitates the formation of layers with an increased redox potential. Also, some field studies have exposed a depth gradient in soil redox potential (Liesack et al., 2000; Reddy and DeLaune, 2008; Zschornack et al., 2011) that is currently not simulated by DayCent. Further development of the redox potential algorithm of the model may lead to a better ability to capture these relationships.

Although the primary soil  $\text{CH}_4$  mechanisms are well studied and quantified, only a few modeling studies have reported these processes in depth, and experimental measurements rarely distinguish between methanogenesis and methanotrophy (Xu et al., 2016). Thus, it is not always possible to identify the impact of a single factor on  $\text{CH}_4$  fluxes. For instance, the redox status of soil affects both methanogenesis and methanotrophy, and field measurements of soil  $\text{CH}_4$  fluxes reflect a dynamic equilibrium between these two



**Figure 5.** Observed and simulated seasonal soil methane ( $\text{CH}_4$ ) emissions under a no-tillage system in a long-term experiment in southern Brazil. Error bars represent standard deviations.

processes. It is therefore impossible to ascertain whether DayCent tends to overestimate soil methanogenesis or underestimate methanotrophy under no-tillage.

## CONCLUSIONS

The DayCent ecosystem simulated SOC, rice yield, and methane emissions in a southern Brazilian paddy rice field with some inaccuracies. The overall performance was considered adequate, as the CH<sub>4</sub> flux trajectories were adequately simulated. However, the model failed to represent the observed potential of no-tillage to mitigate soil CH<sub>4</sub> emissions, possibly because model algorithms were not able to capture the actual field conditions derived from no-tillage management, such as soil redox potential, plant senescence, and surface placement of plant residue.

## ACKNOWLEDGMENTS

This project was funded by the Brazilian Agricultural Research Corporation - Embrapa through the project "Greenhouse gas dynamics and carbon balance in grain production systems in Brazil". We are also grateful to the Brazilian Council for Scientific and Technological Development (CNPq) and the Research Support Foundation of the state of Rio Grande do Sul (Fapergs).

## REFERENCES

- Bayer C, Costa FS, Pedroso GM, Zschornack T, Camargo ES, Lima MA, Frigheto RTS, Gomes J, Marcolin E, Macedo VRM. Yield-scaled greenhouse gas emissions from flood irrigated rice under long-term conventional tillage and no-till systems in a Humid Subtropical climate. *Field Crop Res.* 2014;162:60-9. <https://doi.org/10.1016/j.fcr.2014.03.015>
- Bayer C, Zschornack T, Pedroso GM, Rosa CM, Camargo ES, Boeni M, Marcolin E, Reis CES, Santos DC. A seven-year study on the effects of fall soil tillage on yield-scaled greenhouse gas emission from flood irrigated rice in a humid subtropical climate. *Soil Till Res.* 2015;145:118-25. <https://doi.org/10.1016/j.still.2014.09.001>
- Cao M, Dent JB, Heal OW. Modeling methane emissions from rice paddies. *Global Biogeochem Cy.* 1995;9:183-95. <https://doi.org/10.1029/94GB03231>
- Cheng-Fang L, Dan-Na Z, Zhi-Kui K, Zhi-Sheng Z, Jin-Ping W, Ming-Li C, Cou-Gui C. Effects of tillage and nitrogen fertilizers on CH<sub>4</sub> and CO<sub>2</sub> emissions and soil organic carbon in paddy fields of central China. *PLoS ONE.* 2012;7:e34642. <https://doi.org/10.1371/journal.pone.0034642>
- Cheng K, Ogle SM, Parton WJ, Pan G. Simulating greenhouse gas mitigation potentials for Chinese Croplands using the DAYCENT ecosystem model. *Glob Change Biol.* 2014;20:948-62. <https://doi.org/10.1111/gcb.12368>
- Cheng K, Ogle SM, Parton WJ, Pan G. Predicting methanogenesis from rice paddies using the DAYCENT ecosystem model. *Ecol Model.* 2013;261-262:19-31. <https://doi.org/10.1016/j.ecolmodel.2013.04.003>
- Chimner RA, Cooper DJ, Parton WJ. Modeling carbon accumulation in Rocky Mountain fens. *Wetlands.* 2002;22:100-10. [https://doi.org/10.1672/0277-5212\(2002\)022\[0100:mcairm\]2.0.co;2](https://doi.org/10.1672/0277-5212(2002)022[0100:mcairm]2.0.co;2)
- Companhia Nacional de Abastecimento - Conab. Acompanhamento da safra brasileira: grãos. Safra 2016/2017, Décimo segundo levantamento. Brasília, DF: 2017 [acesso em 08 mai 2018]. Disponível em: [www.conab.gov.br/index.php/info-agro/safra/graos/boletim-da-safra-de-graos?limitstart=0](http://www.conab.gov.br/index.php/info-agro/safra/graos/boletim-da-safra-de-graos?limitstart=0)
- Congreves KA, Grant BB, Campbell CA, Smith WN, VandenBygaart AJ, Kröbel R, Lemke RL, Desjardins RL. Measuring and modeling the long-term impact of crop management on soil carbon sequestration in the semiarid Canadian prairies. *Agron J.* 2015;107:1141-54. <https://doi.org/10.2134/agronj15.0009>
- Costa FS. Estoques de carbono orgânico e efluxos de dióxido de carbono e metano de solos em preparo convencional e plantio direto no subtropical brasileiro [tese]. Porto Alegre: Universidade Federal do Rio Grande do Sul; 2005.

- Das A, Lal R, Patel DP, Idapuganti RG, Layek J, Ngachan SV, Ghosh PK, Bordoloi J, Kumar M. Effects of tillage and biomass on soil quality and productivity of lowland rice cultivation by small scale farmers in North Eastern India. *Soil Till Res.* 2014;143:50-8. <https://doi.org/10.1016/j.still.2014.05.012>
- Del Grosso SJ, Parton WJ, Keough CA, Reyes-Fox M. Special features of the DayCent modeling package and additional procedures for parameterization, calibration, validation, and applications. In: Ahuja LR, Ma L, editors. *Methods of introducing system models into agricultural research*. Madison: ASA, CSSA, SSSA; 2011. p. 155-76.
- Feng J, Chen C, Zhang Y, Song Z, Deng A, Zheng C, Zhang W. Impacts of cropping practices on yield-scaled greenhouse gas emissions from rice fields in China: a meta-analysis. *Agr Ecosyst Environ.* 2013;164:220-8. <https://doi.org/10.1016/j.agee.2012.10.009>
- Ghimire R, Adhikari KR, Chen Z-S, Shah SC, Dahal KR. Soil organic carbon sequestration as affected by tillage, crop residue, and nitrogen application in rice-wheat rotation system. *Paddy Water Environ.* 2012;10:95-102. <https://doi.org/10.1007/s10333-011-0268-0>
- Huang M, Zhou X, Cao F, Zou Y. Long-term effect of no-tillage on soil organic carbon and nitrogen in an irrigated rice-based cropping system. *Paddy Water Environ.* 2016;14:367-71. <https://doi.org/10.1007/s10333-015-0506-y>
- Intergovernmental Panel on Climate Change - IPCC. *Climate change 2013: the physical science basis. Contribution of working group I to the fifth assessment report of the Intergovernmental Panel on Climate Change*. Cambridge: Cambridge University Press; 2013 [accessed on May 8, 2018]. Available at: <http://www.ipcc.ch/report/ar5/wg1/>
- Le Mer J, Roger P. Production, oxidation, emission and consumption of methane by soils: a review. *Eur J Soil Biol.* 2001;37:25-50. [https://doi.org/10.1016/S1164-5563\(01\)01067-6](https://doi.org/10.1016/S1164-5563(01)01067-6)
- Li D, Liu M, Cheng Y, Wang D, Qin J, Jiao J, Li H, Hu F. Methane emissions from double-rice cropping system under conventional and no tillage in southeast China. *Soil Till Res.* 2011;113:77-81. <https://doi.org/10.1016/j.still.2011.02.006>
- Liesack W, Schnell S, Revsbech NP. Microbiology of flooded rice paddies. *FEMS Microbiol Rev.* 2000;24:625-45. <https://doi.org/10.1111/j.1574-6976.2000.tb00563.x>
- Metherell AK, Harding LA, Cole CV, Parton WJ. *Century soil organic matter model environment. Agroecosystem version 4.0*. Fort Collins: USDA-ARS; 1993. (Technical Report No. 4).
- Migliorati MA, Parton WJ, Del Grosso SJ, Grace PR, Bell MJ, Strazzabosco A, Rowlings DW, Scheer C, Harch G. Legumes or nitrification inhibitors to reduce N<sub>2</sub>O emissions from subtropical cereal cropping systems in Oxisols? *Agr Ecosyst Environ.* 2015;213:228-40. <https://doi.org/10.1016/j.agee.2015.08.010>
- Moterle DF, Silva LS, Moro VJ, Bayer C, Zschornack T, Avila LA, Bundt AC. Methane efflux in rice paddy field under different irrigation managements. *Rev Bras Cienc Solo.* 2013;37:431-7. <https://doi.org/10.1590/S0100-06832013000200014>
- Nascimento PC, Bayer C, Silva Netto LF, Vian AC, Vieiro F, Macedo VRM, Marcolin E. Sistemas de manejo e a matéria orgânica de solo de várzea com cultivo de arroz. *Rev Bras Cienc Solo.* 2009;33:1821-7. <https://doi.org/10.1590/S0100-06832009000600030>
- Parton WJ, Schimel DS, Cole CV, Ojima DS. Analysis of factors controlling soil organic matter levels in Great Plains grasslands. *Soil Sci Soc Am J.* 1987;51:1173-9. <https://doi.org/10.2136/sssaj1987.03615995005100050015x>
- Peel MC, Finlayson BL, McMahon TA. Updated world map of the Köppen-Geiger climate classification. *Hydrol Earth Syst Sci.* 2007;11:1633-44. <https://doi.org/10.5194/hess-11-1633-2007>
- Plaza-Bonilla D, Álvaro-Fuentes J, Arrúe JL, Cantero-Martínez C. Tillage and nitrogen fertilization effects on nitrous oxide yield-scaled emissions in a rainfed Mediterranean area. *Agr Ecosyst Environ.* 2014;189:43-52. <https://doi.org/10.1016/j.agee.2014.03.023>
- Reddy KR, DeLaune RD. *Biogeochemistry of wetlands: science and applications*. Boca Raton: CRC Press; 2008.

- Rosa CM, Castilhos RMV, Pauletto EA, Pillon CN, Leal OA. Conteúdo de carbono orgânico em Planossolo Háplico sob sistemas de manejo do arroz irrigado. *Rev Bras Cienc Solo*. 2011;35:1769-76. <https://doi.org/10.1590/S0100-06832011000500031>
- Scheer C, Del Grosso SJ, Parton WJ, Rowlings DW, Grace PR. Modeling nitrous oxide emissions from irrigated agriculture: testing DayCent with high-frequency measurements. *Ecol Appl*. 2014;24:528-38. <https://doi.org/10.1890/13-0570.1>
- Smith P, Smith JU, Powlson DS, McGill WB, Arah JRM, Chertov OG, Coleman K, Franko U, Frolking S, Jenkinson DS, Jensen LS, Kelly RH, Klein-Gunnewiek H, Komarov AS, Li C, Molina JAE, Mueller T, Parton WJ, Thornley JHM, Whitmore AP. A comparison of the performance of nine soil organic matter models using datasets from seven long-term experiments. *Geoderma*. 1997;81:153-225. [https://doi.org/10.1016/S0016-7061\(97\)00087-6](https://doi.org/10.1016/S0016-7061(97)00087-6)
- Sociedade Sul-Brasileira de Arroz Irrigado - Sosbai. Arroz irrigado: recomendações técnicas da pesquisa para o sul do Brasil - XXXI Reunião técnica da cultura do arroz irrigado. Pelotas: Sosbai; 2016 [accessed on May 8, 2018]. Available from: [http://www.sosbai.com.br/docs/Boletim\\_RT\\_2016.pdf](http://www.sosbai.com.br/docs/Boletim_RT_2016.pdf)
- Stehfest E, Heistermann M, Priess JA, Ojima DS, Alcamo J. Simulation of global crop production with the ecosystem model DayCent. *Ecol Model*. 2007;209:203-19. <https://doi.org/10.1016/j.ecolmodel.2007.06.028>
- Uhde LT. Sistema pedológico em um ambiente antropizado da Depressão Central do RS [tese]. Santa Maria: Universidade Federal de Santa Maria; 2009.
- Weiler DA, Tornquist CG, Parton W, Santos HP, Santi A, Bayer C. Crop biomass, soil carbon and nitrous oxide as affected by management and climate: a DayCent application in Brazil. *Soil Sci Soc Am J*. 2017;81:945-55. <https://doi.org/10.2136/sssaj2017.01.0024>
- World Meteorological Organization - WMO. The state of greenhouse gases in the atmosphere based on observations through; 2015 [accessed on May 8, 2018]. Geneva: Greenhouse Gas Bulletin; 2016. (Bulletin No. 12). Available at: [http://library.wmo.int/opac/doc\\_num.php?explnum\\_id=3084](http://library.wmo.int/opac/doc_num.php?explnum_id=3084)
- Xu X, Yuan F, Hanson PJ, Wullschleger SD, Thornton PE, Riley WJ, Song X, Graham DE, Song C, Tian H. Reviews and syntheses: four decades of modeling methane cycling in terrestrial ecosystems. *Biogeosciences*. 2016;13:3735-55. <https://doi.org/10.5194/bg-13-3735-2016>
- Zschornack T, Bayer C, Zanatta JA, Vieira FCB, Anghinoni I. Mitigation of methane and nitrous oxide emissions from flood-irrigated rice by no incorporation of winter crop residues into the soil. *Rev Bras Cienc Solo*. 2011;35:623-34. <https://doi.org/10.1590/S0100-06832011000200031>
- Zschornack T, Rosa CM, Pedroso GM, Marcolin E, Silva PRF, Bayer C. Mitigation of yield-scaled greenhouse gas emissions in subtropical paddy rice under alternative irrigation systems. *Nutr Cycl Agroecosyst*. 2016;105:61-73. <https://doi.org/10.1007/s10705-016-9775-0>