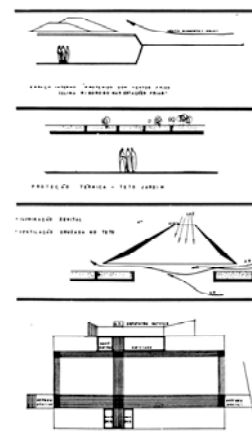
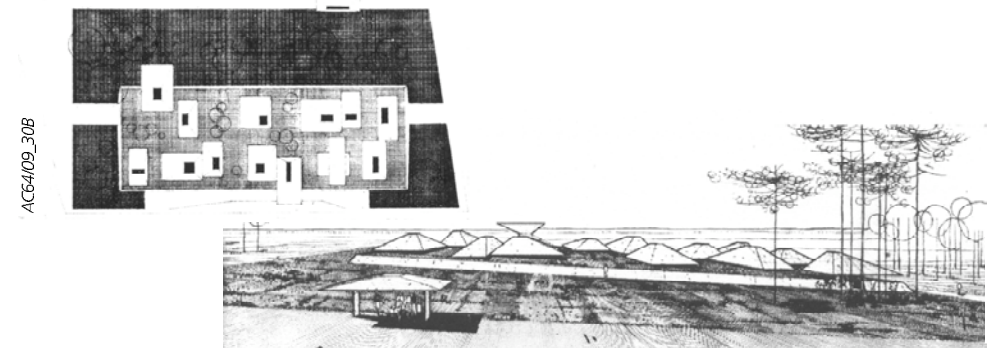
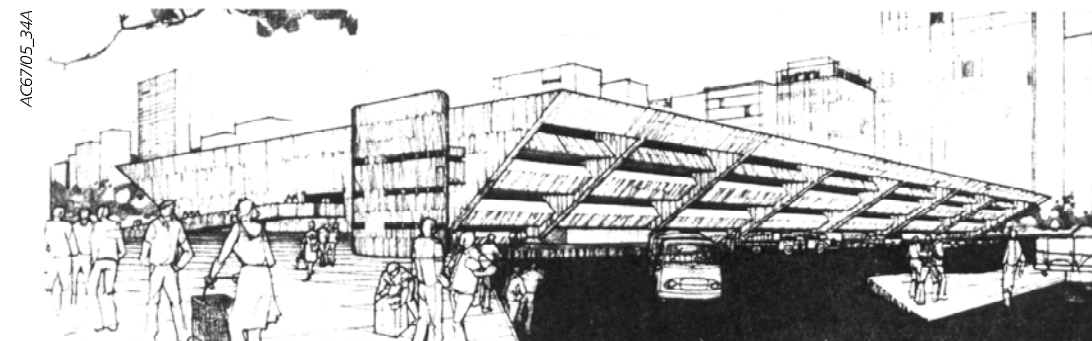
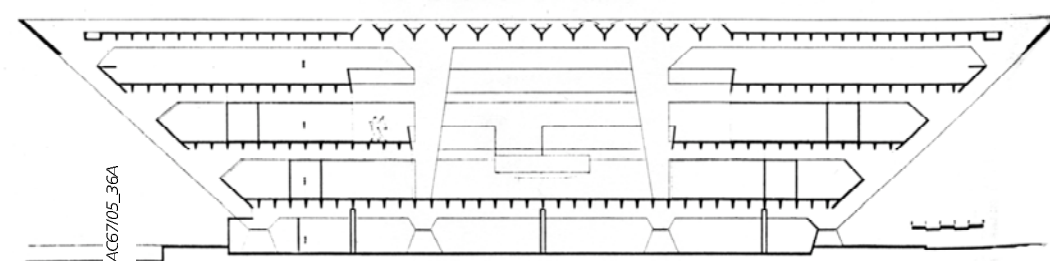
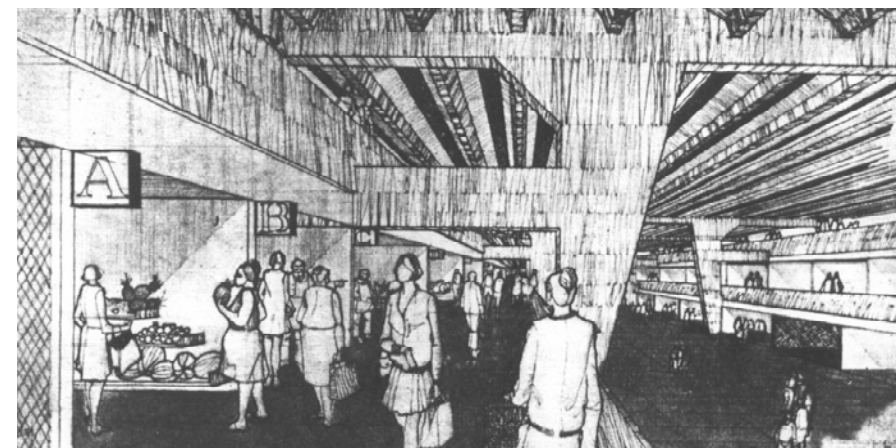


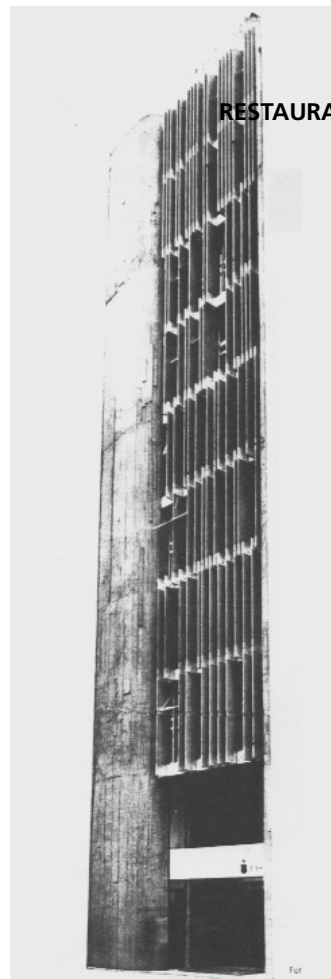
7.4.8 EDIFÍCIOS PARA USOS COMERCIAIS: DEFININDO CORTES

CONCURSO DO CENTRO COMERCIAL DO PORTÃO, CURITIBA, 1964,
MANOEL ROBERTO SIQUEIRA DE FIGUEIREDO, NOEMIO XAVIER DA SILVEIRA FILHO



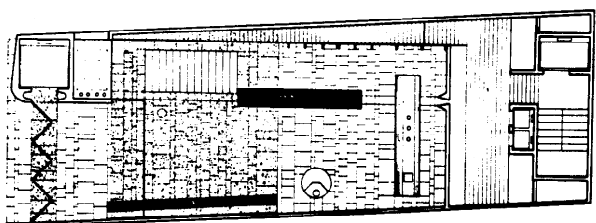
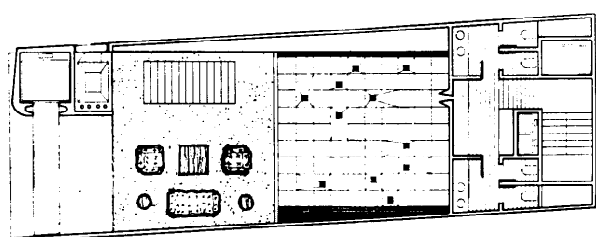
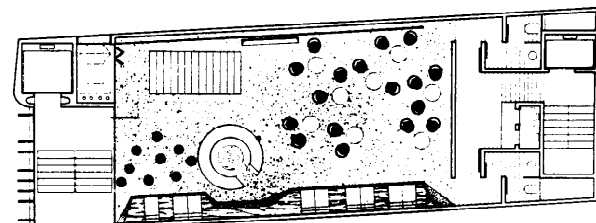
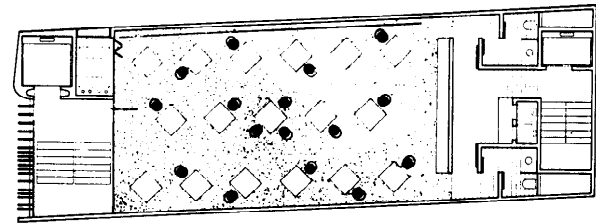
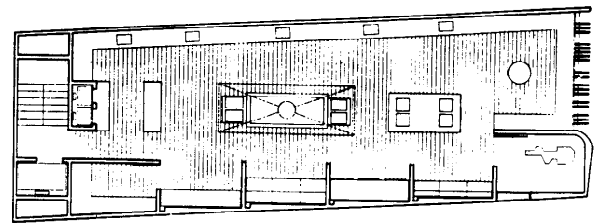
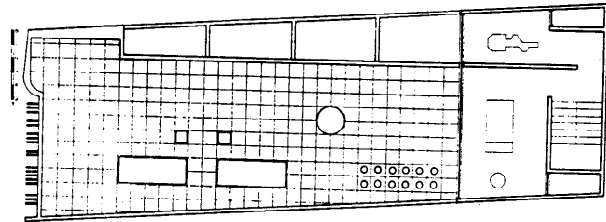
CONCURSO PARA MERCADO MUNICIPAL, PORTO ALEGRE, 1967, MASSIMO FIOCCHI E JOSÉ MAGALHÃES





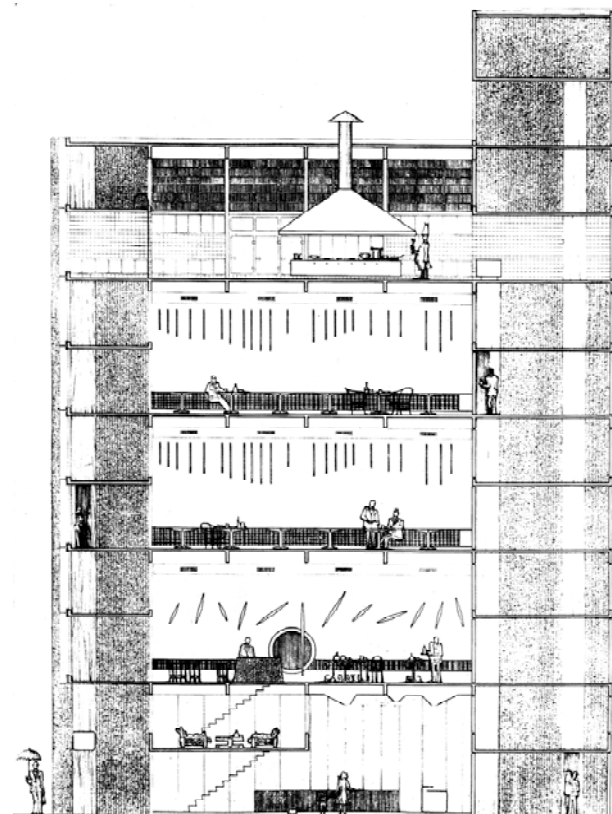
AC65/09_30

RESTAURANTE VERTICAL FASANO, 1964-5, TELÉSFORO CRISTOFANI

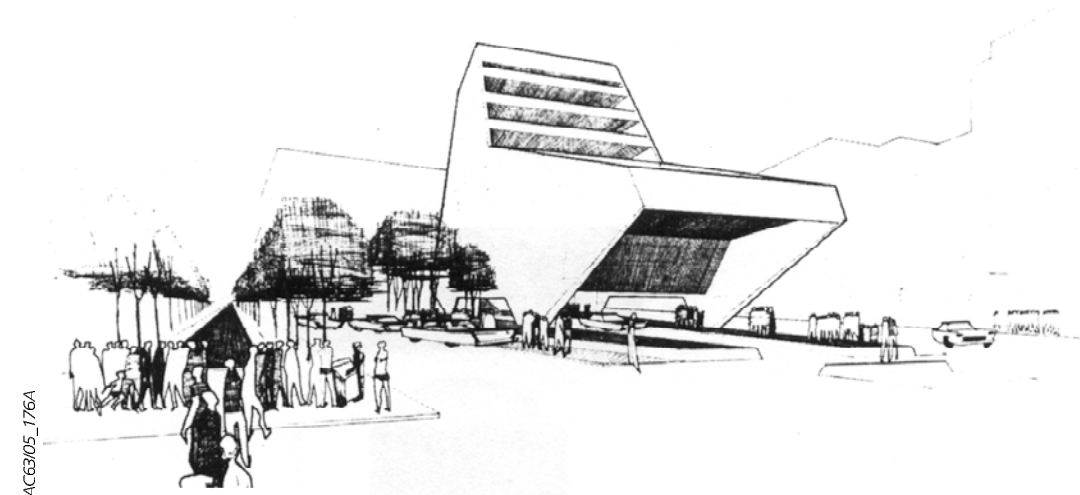


AC65/09_32

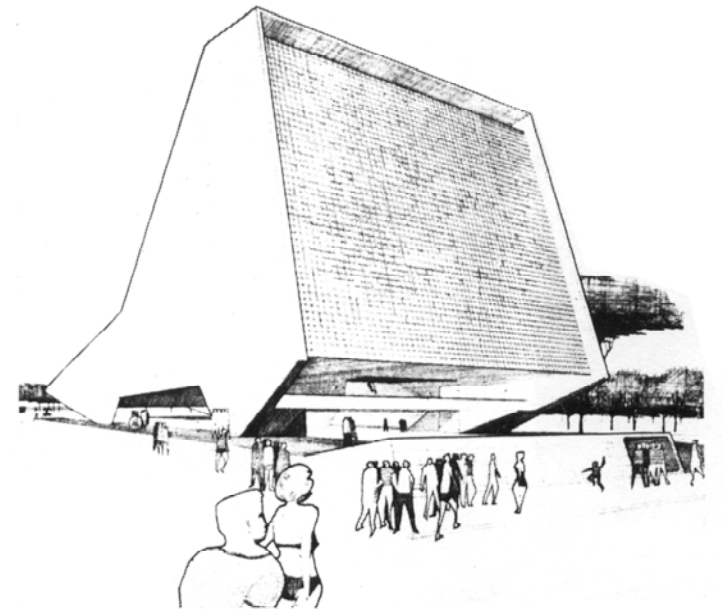
AC65/09_33



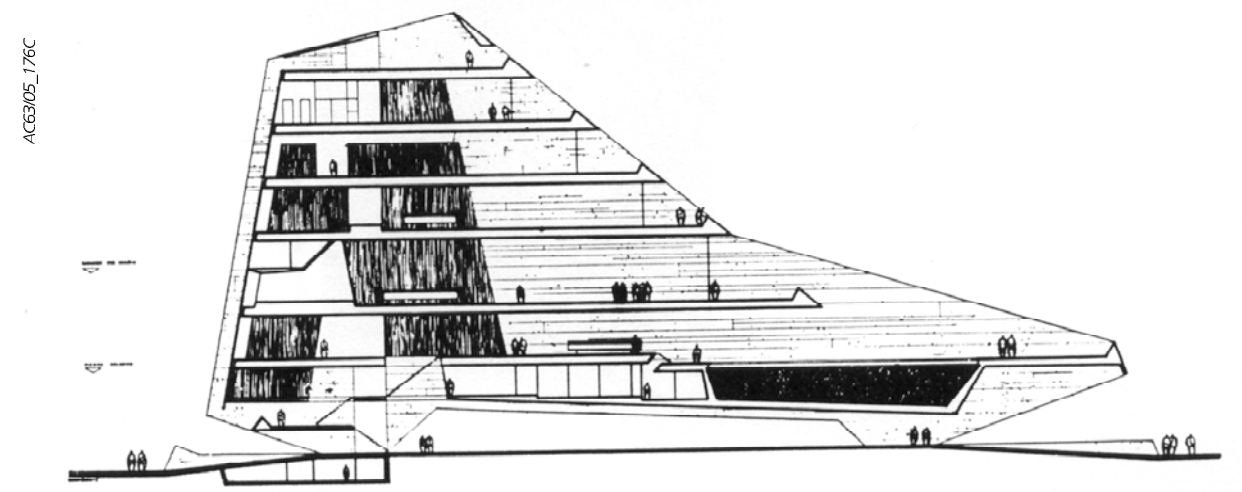
CLUBE XV, SANTOS, 1963, TELÉSFORO CRISTOFANI [CONCURSO, 5º LUGAR]



AC63/05_176A

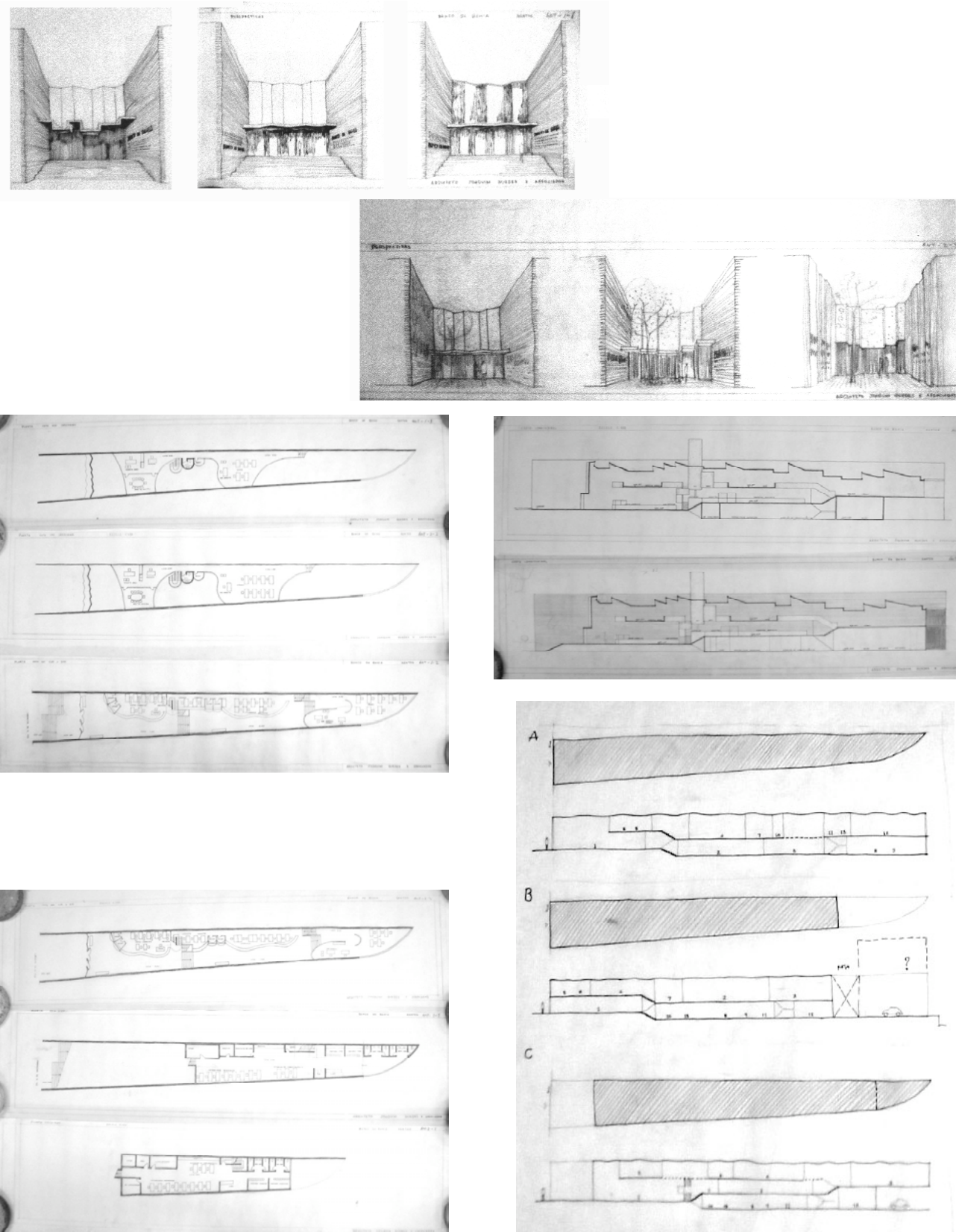


AC63/05_176B



AC63/05_176C

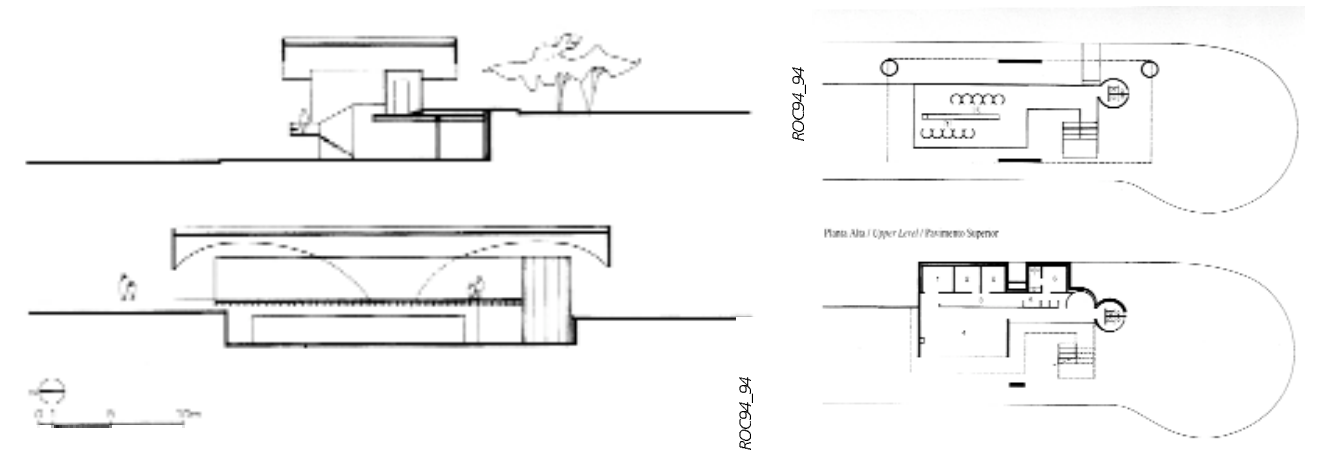
BANCO DA BAHIA, SANTOS, 1967, JOAQUIM GUEDES



CENTRAL TELEFONICA - COTESP, 1973, CAMPO DO JORDÃO, RUY OHTAKE



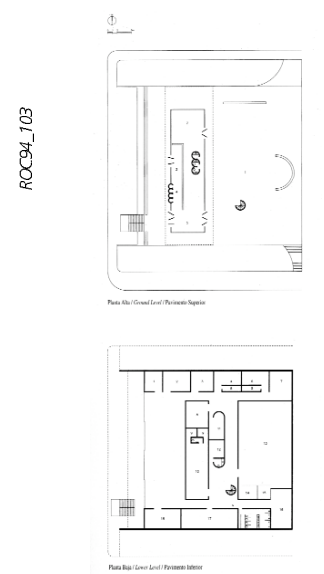
ROCC94_98A



CENTRAL TELEFONICA - COTESP, 1973, IBIUNA, RUY OHTAKE

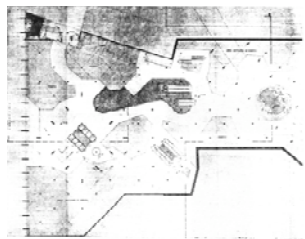


ROCC94_103B

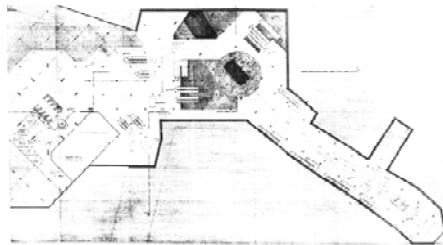
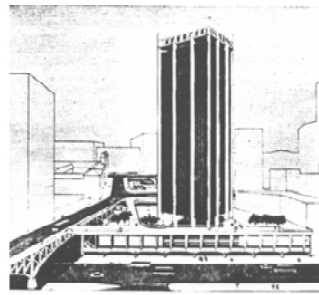
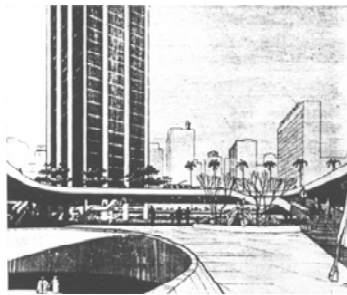


7.4.9 EQUIPAMENTOS URBANOS: ARQUITETURA PÚBLICA

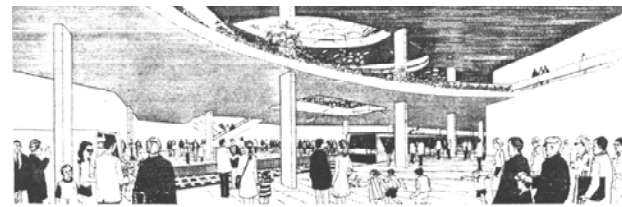
ESTAÇÃO SÃO BENTO DO METRÔ, MARCELLO FRAGELLI



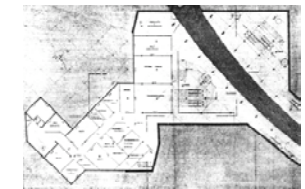
AC69/03_33A



AC69/03_32

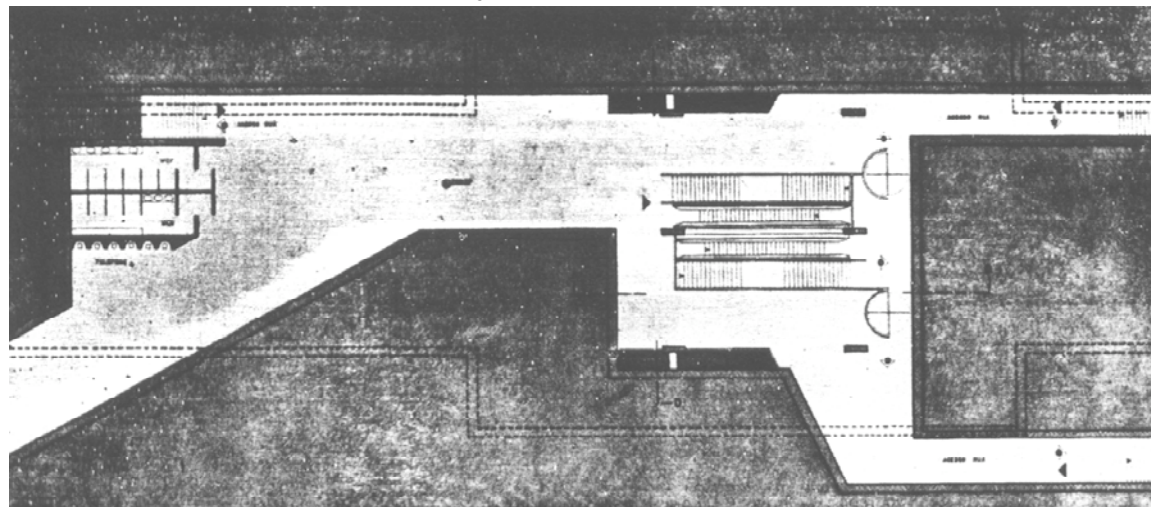


AC69/03_31BC

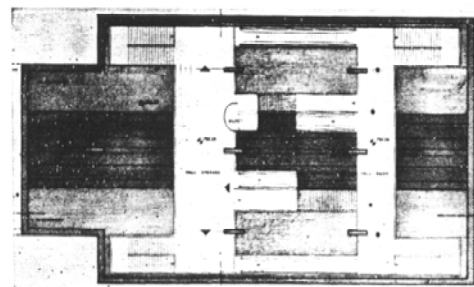


AC69/03_33B

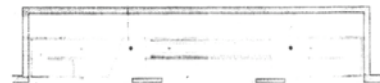
ESTAÇÃO LIBERDADE DO METRÔ, 1968, MARCELLO FRAGELLI



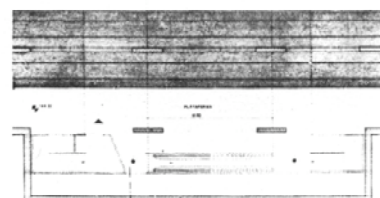
AC69/03_34A



Planta do nível da plataforma



Planta do hall de distribuição

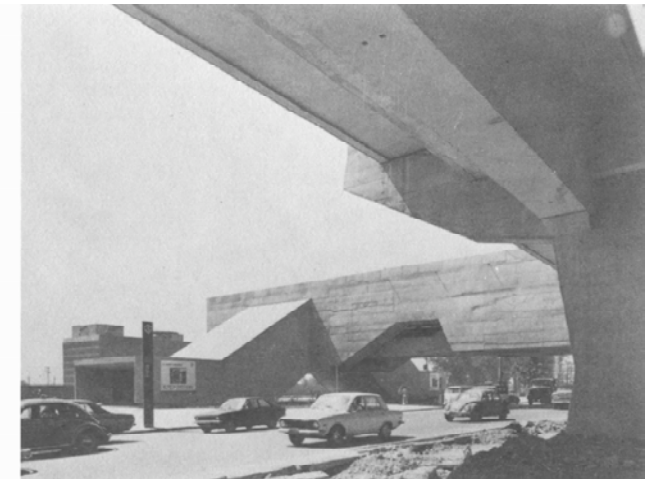
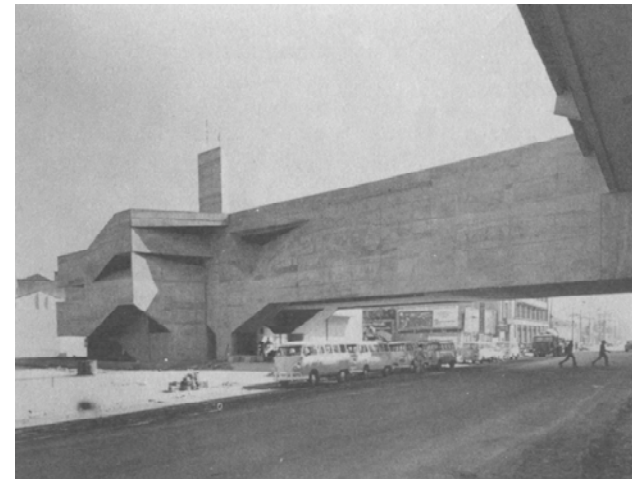


AC69/03_34BC



AMP77_104C

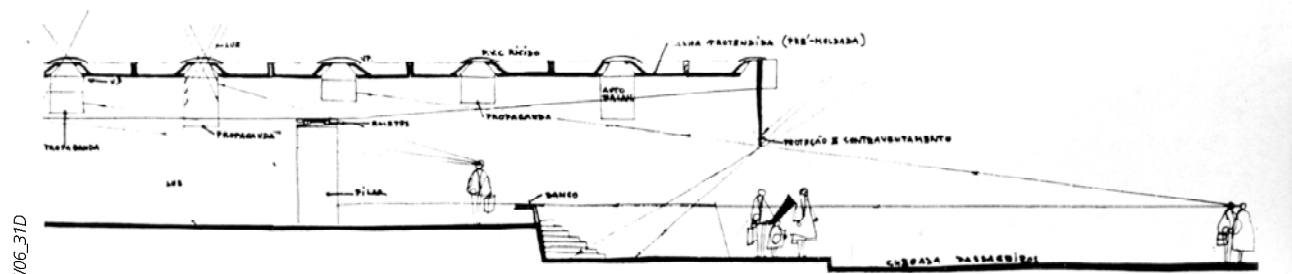
ESTAÇÃO TIETÊ DO METRÔ, 1968, MARCELLO FRAGELLI



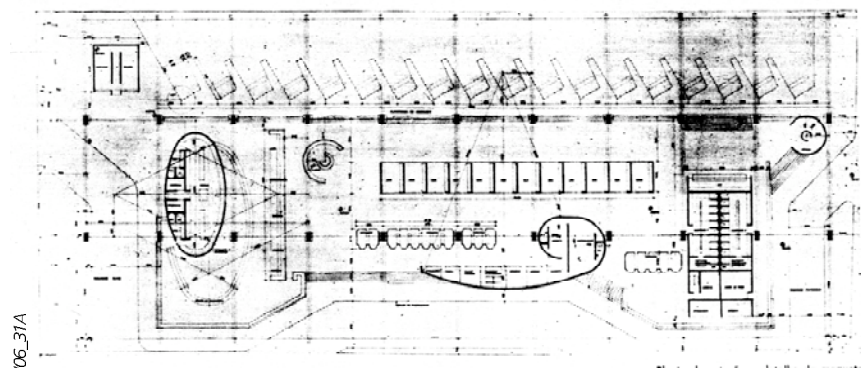
ESTAÇÃO PONTE PEQUENA [ARMENIA] DO METRÔ, 1968, MARCELLO FRAGELLI



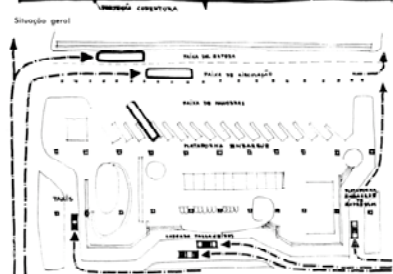
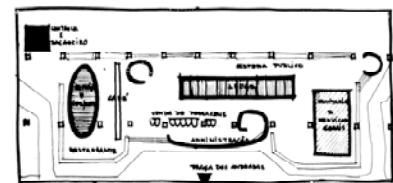
ESTAÇÃO RODOVIÁRIA DE SANTOS, 1967, FLÁVIO PASTORE E LUGI VILLAVECHIA



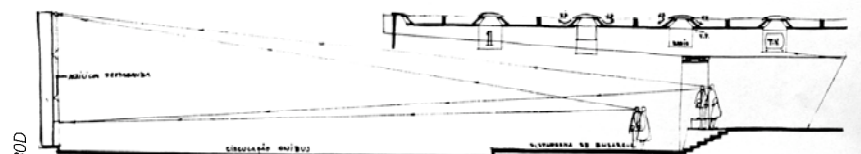
AC67/06_31D



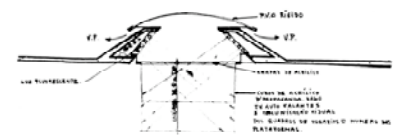
AC67/06_31A



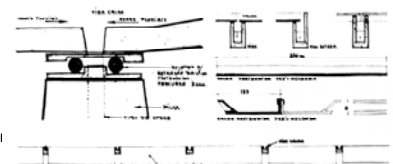
Condições



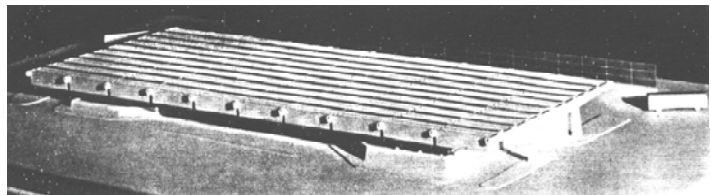
AC67/06_30D



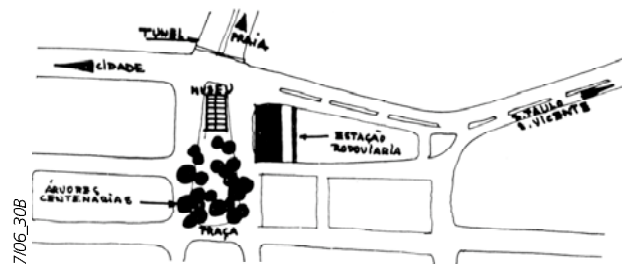
Detalhes de iluminação e estrutura de cobertura



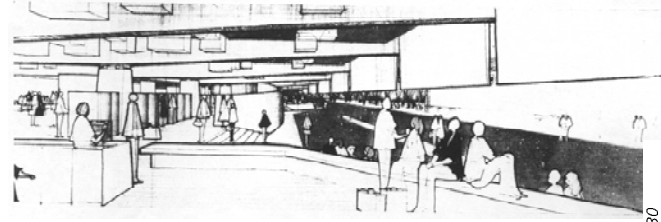
AC67/06_32



AC67/06_30A

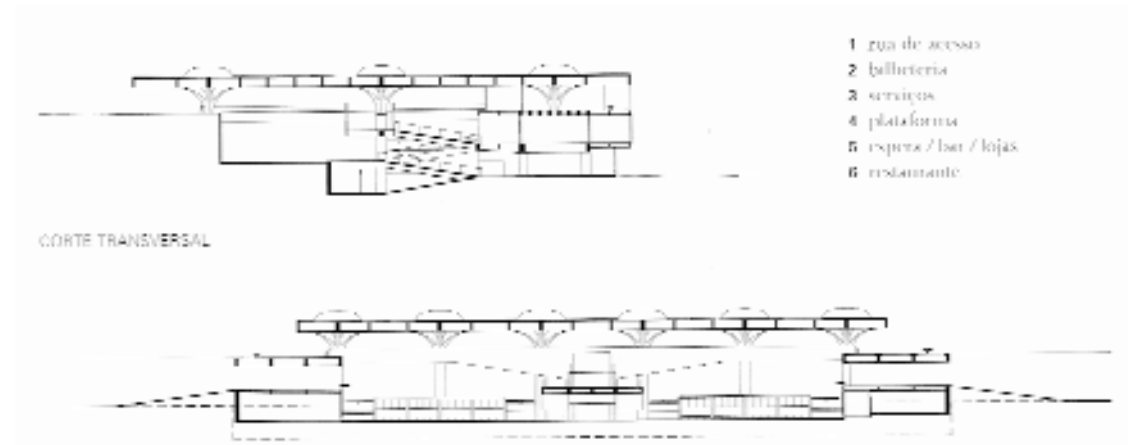


AC67/06_30B

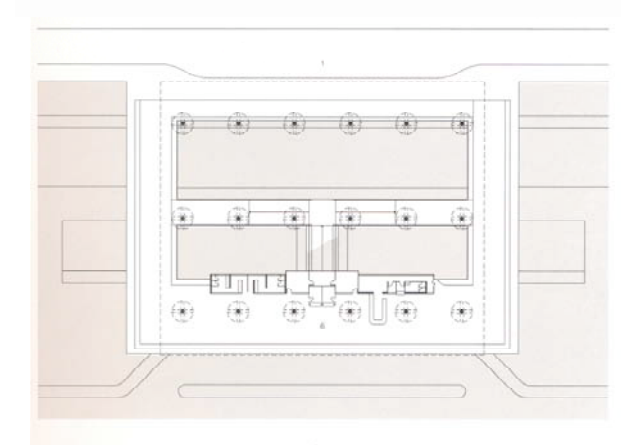


AC67/06_30

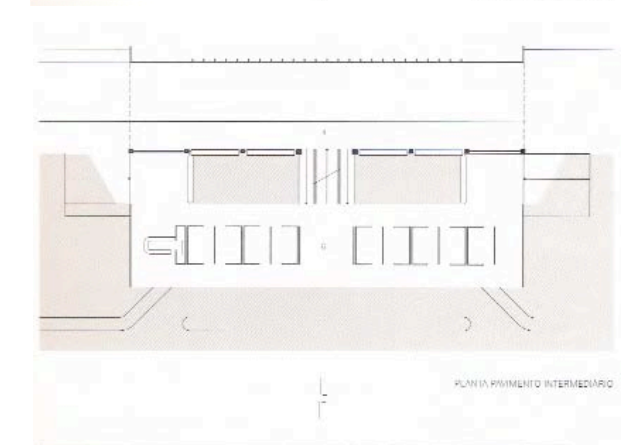
ESTAÇÃO RODOVIÁRIA DE JAHU, 1973, VILANOVA ARTIGAS



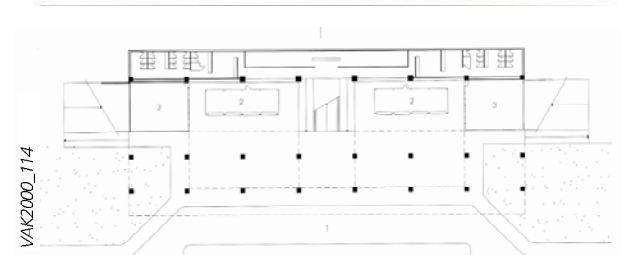
CORTE TRANSVERSAL



PLANTA PAVIMENTO SUPERIOR



PLANTA PAVIMENTO INTERMEDIÁRIO



VAK2000_114



VAK2000_170



VAK2000_183



VAK2000_112



VAK2000_109



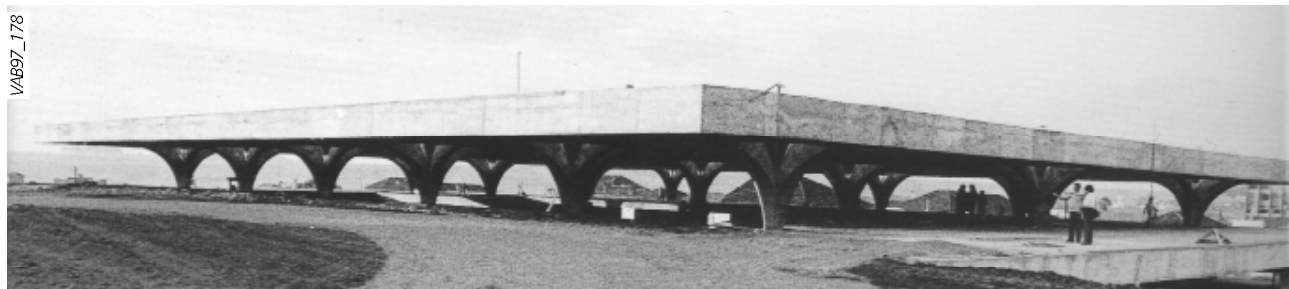
VAK2000_109



VAK2000_113



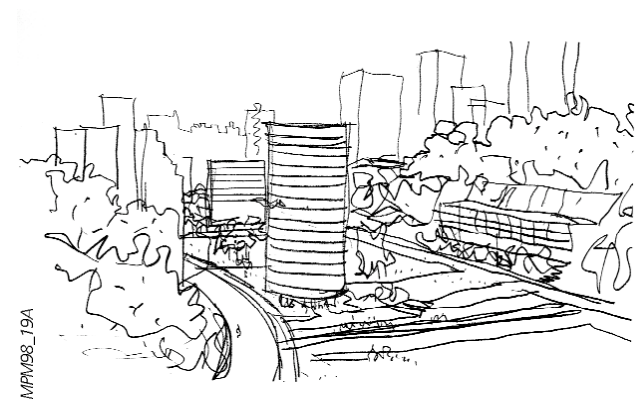
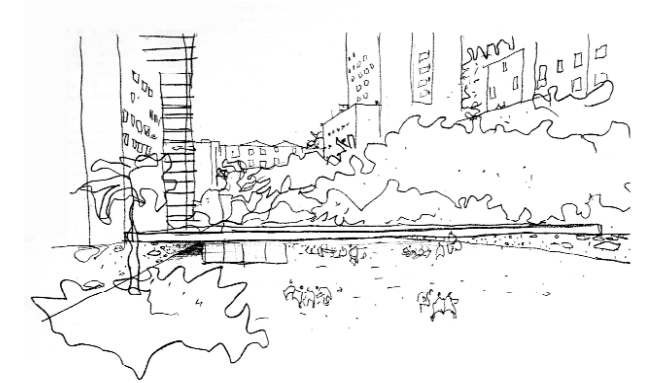
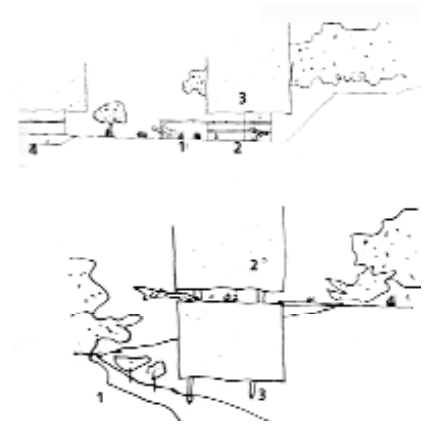
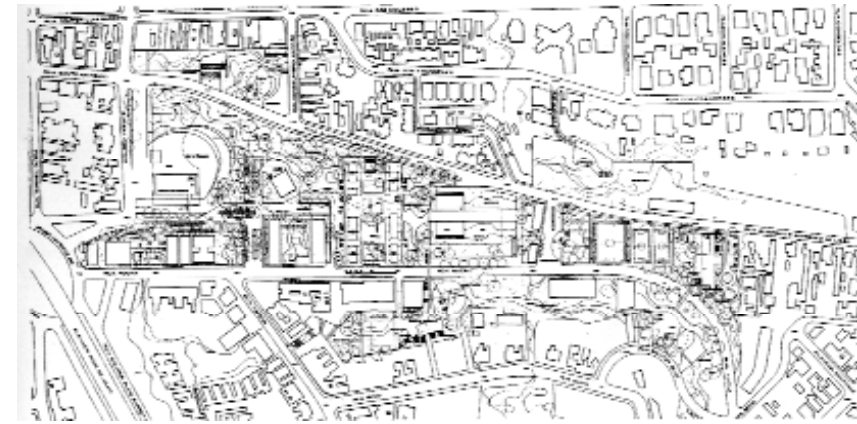
VAK2000_108



V1997_178

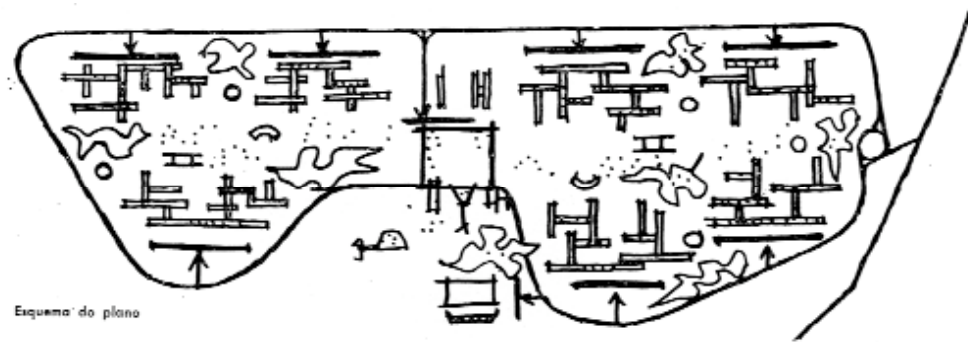
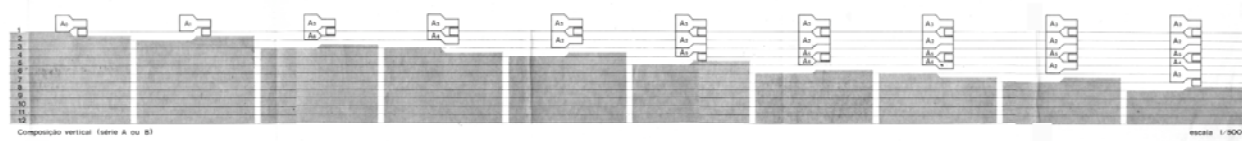
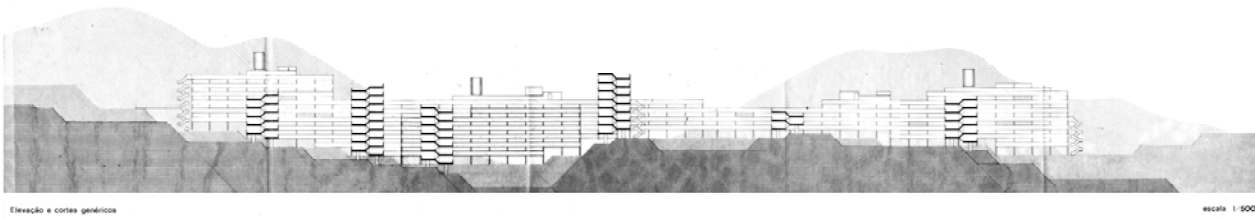
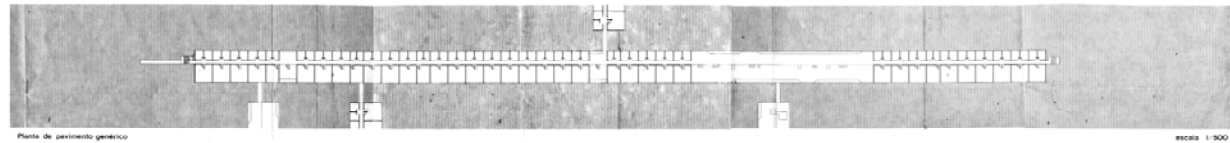
7.4.10 CONJUNTOS HABITACIONAIS: UTOPIAS TECNOLÓGICAS E URBANÍSTICAS

PARQUE DA GROTA, 1974, PAULO MENDES DA ROCHA

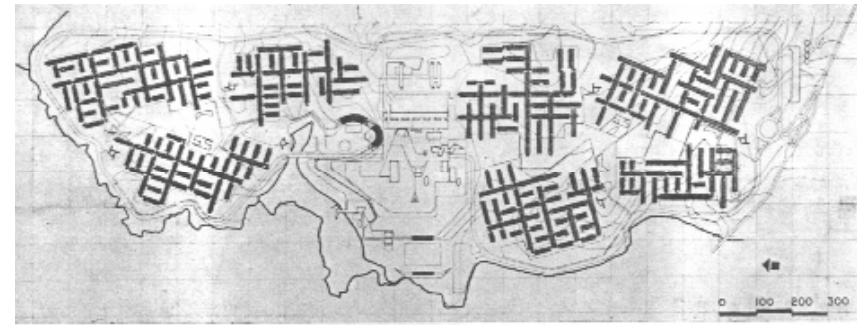
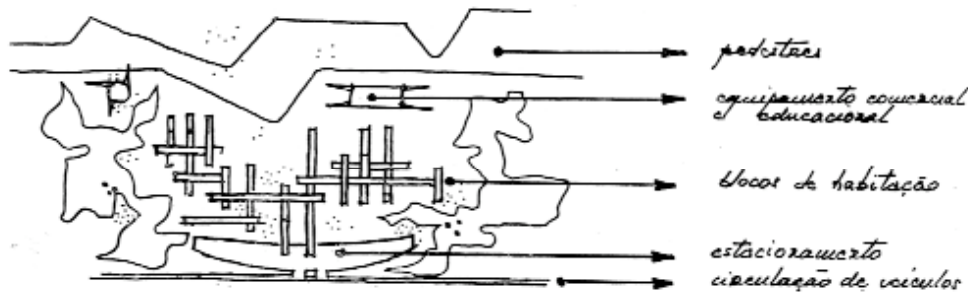


MPV198_19A

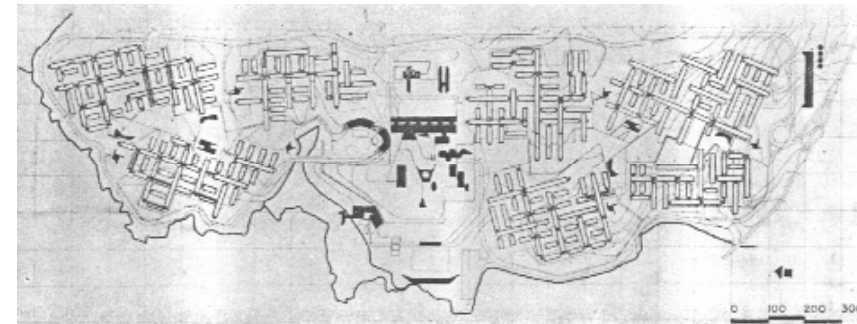
PLANO PARA UMA CIDADE SATELITE, 1965, A.S. BERGAMIM, ARNALDO A MARTINO, JENY KAUFFMAN, J., GUILHERME S. DE CASTRO, JULIO T. YAMAZAKI, LUIZ FIESBERG, LUIZ KUPFER, MATHEUS GOROVITZ, RODRIGO LEFEVRE, SERGIO FERRO WALTER HERMAN



Esquema de planta de um núcleo residencial

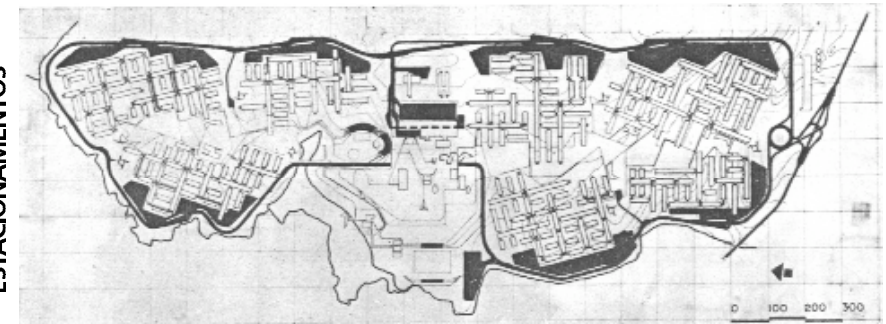


NÚCLEOS RESIDENCIAIS

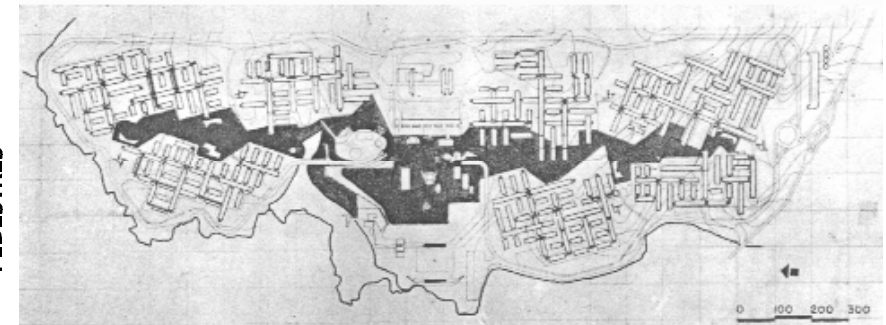


EQUIPAMENTOS

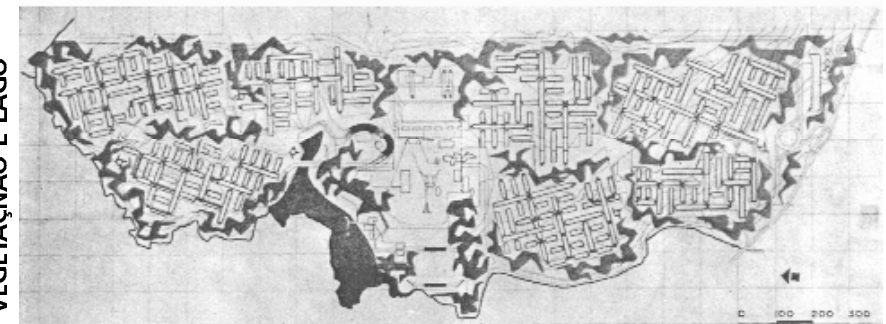
SISTEMA VIÁRIO E ESTACIONAMENTOS



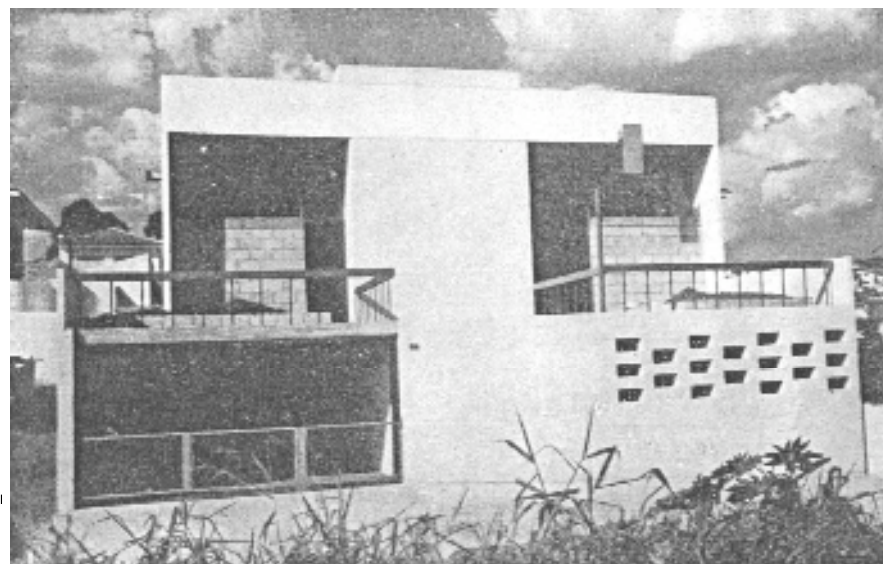
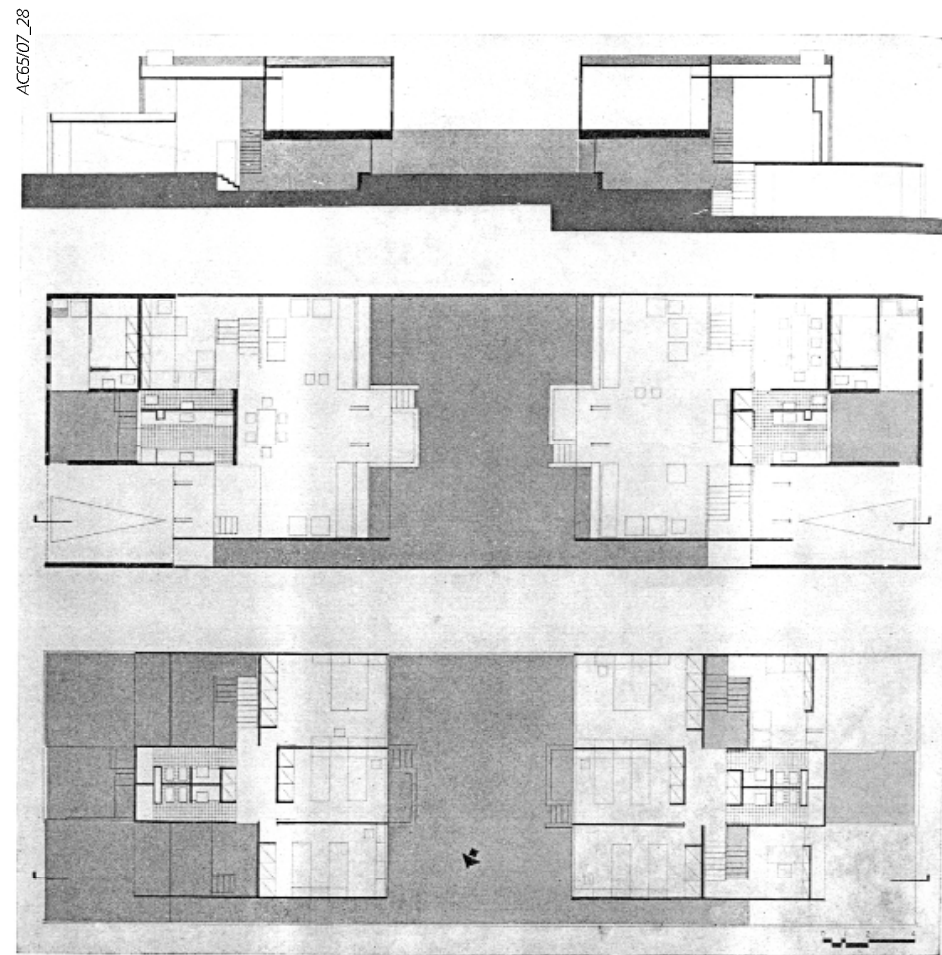
CIRCULAÇÃO DE PEDESTRES



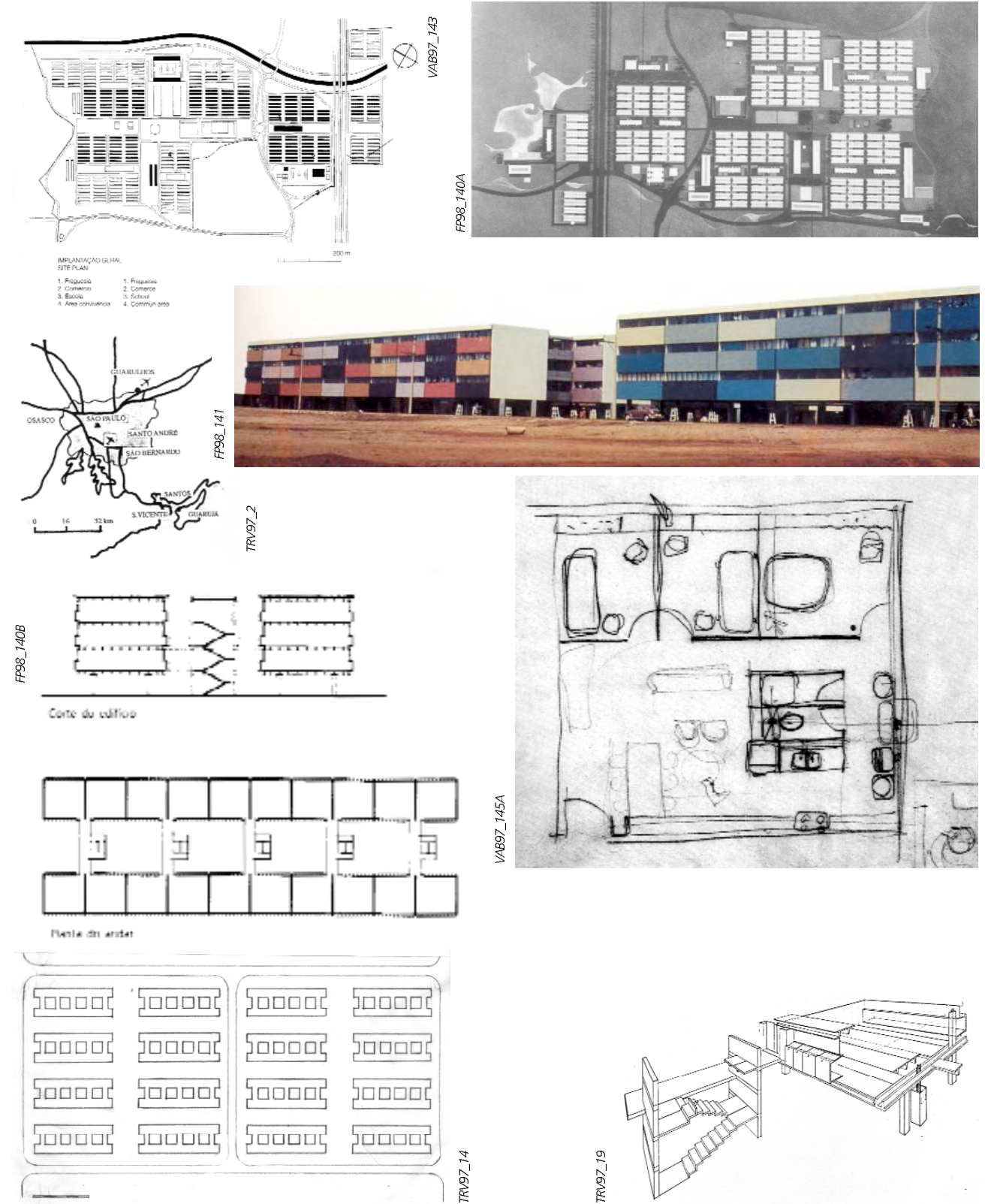
VEGETAÇÃO E LAGO



RESIDÊNCIA MARIETTA VAMPRE, 1962, RODRIGO LEFEVRE E SERGIO FERRO



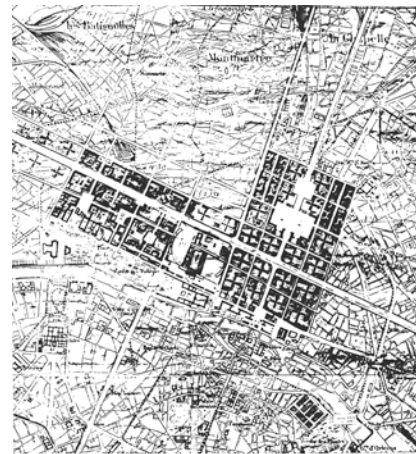
CECAP CUMBICA, CONJUNTO ZEZINHO MAGALHÃES, GUARULHOS, 1967, VILANOVA ARTIGAS, FABIO PENTEADO E PAULO MENDES DA ROCHA



PLAIN VOISIN, LE CORBUSIER

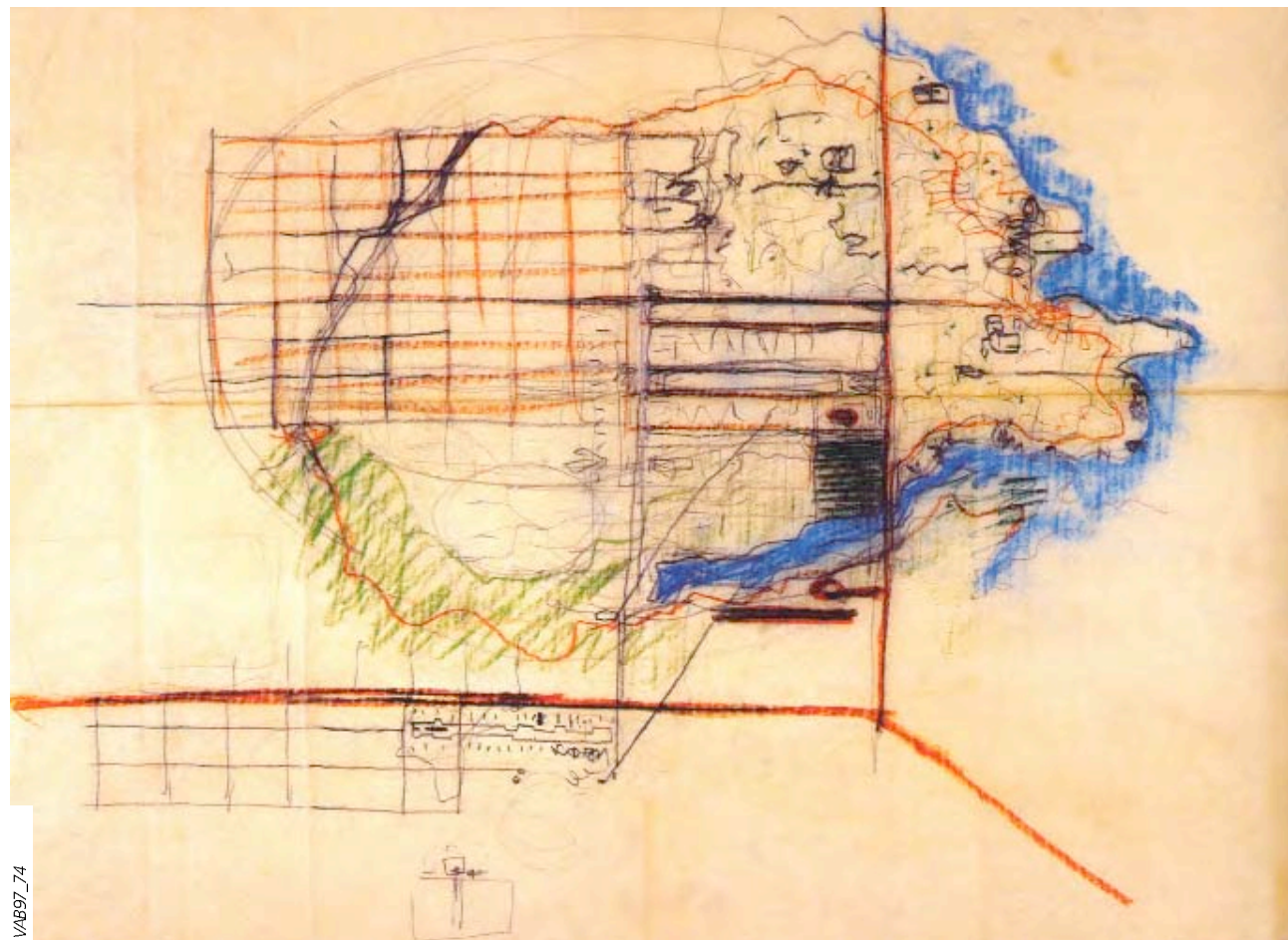


CKF2001_53



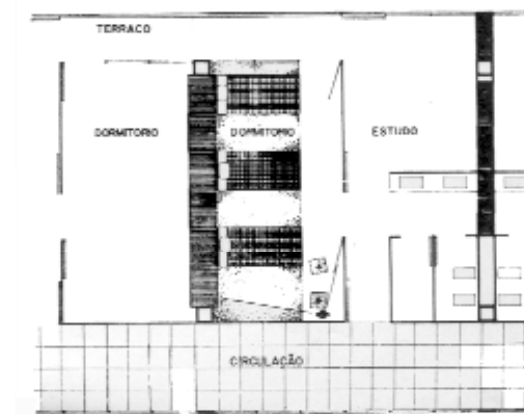
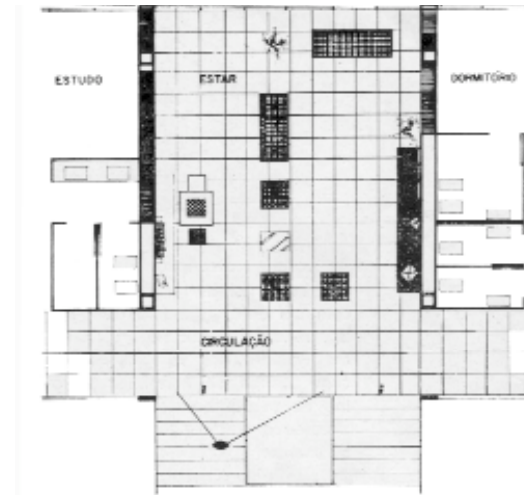
«PLAN VOISIN» DE PARIS 1925

CONCURSO PARA BRASÍLIA, 1956, VILANOVA ARTIGAS, 5º LUGAR



VAB97_74

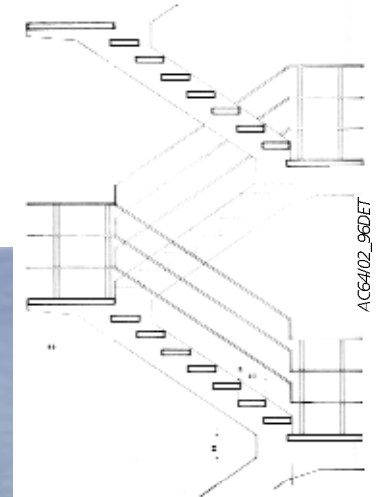
ALOJAMENTO ESTUDANTIL, CRUSP, 1961, EDUARDO KNEESE DE MELLO, JOEL RAMALHO JR. E SIDNEY DE OLIVEIRA



Planta geral de situação da Cidade Universitária, com os Edifícios Residenciais dentro do circuito. Ao lado planta de situação das edíficos.



AC64/02_93C



AC64/02_96DET



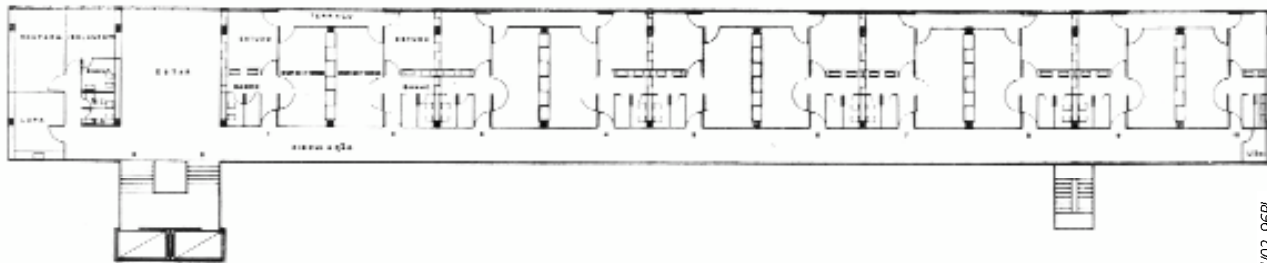
AC64/02_96A



AC64102_93A



AC64102_95



AC64102_96FL