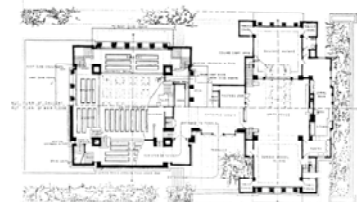


7.4.7 IGREJAS: VALORES SIMBÓLICOS, ABSTRAÇÃO E TRADIÇÃO

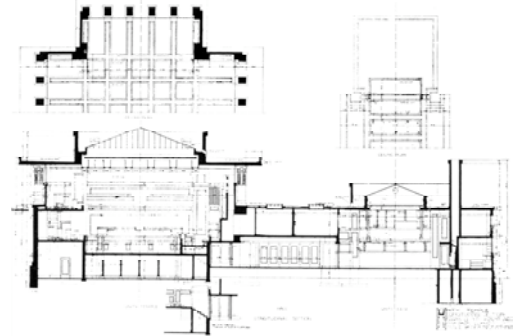
IGREJA DA SAGRADA FAMÍLIA, 1883- 1926, ANTONI GAUDI



G85_43



TEMPLO DA IGREJA UNTÁRIA, 1904-06, FRANK LLOYD WRIGHT

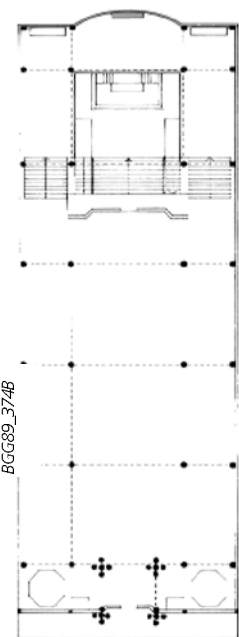


FLG85_75B

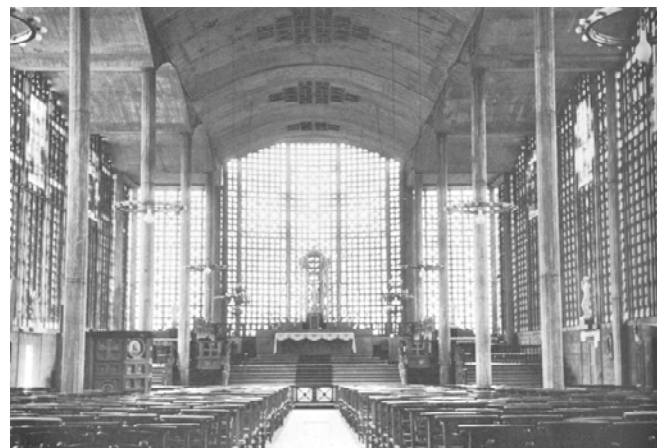
FLG85_74



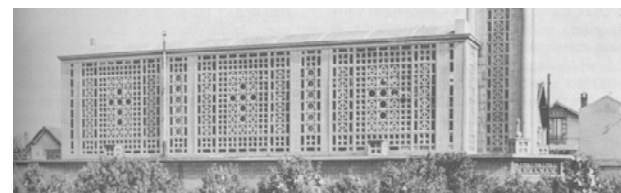
IGREJA DE NOTRE DAME DE RAINCY, PARIS, 1922-23, AUGUSTE PERRET



BGG89_374B

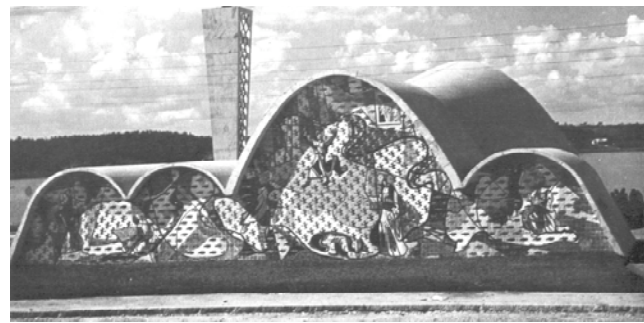


BGG89_374A

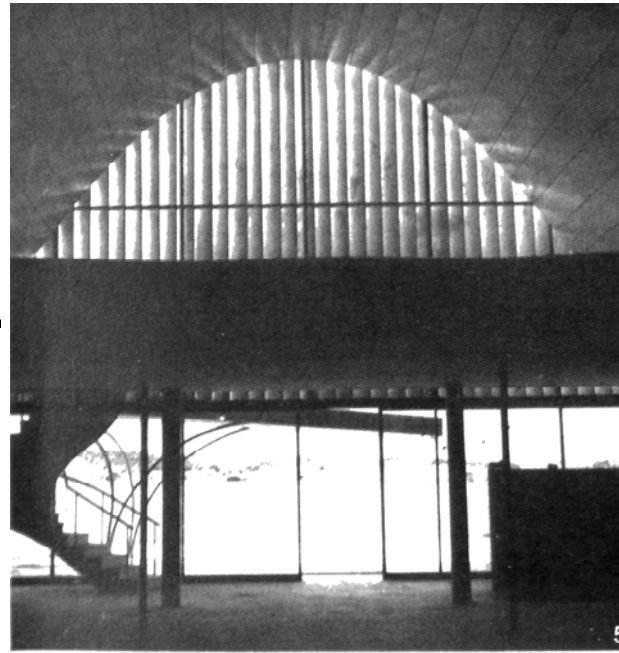


BGG89_375B

CAPELA DE SÃO FRANCISCO, PAMPULHA, BELO HORIZONTE, 1940-3, OSCAR NIEMEYER



NEA77_44A



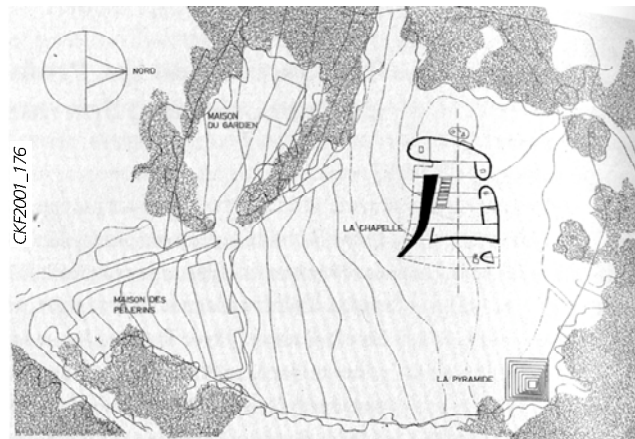
NEA77_45CE

CAPELA DO PALÁCIO DA ALVORADA, BRASÍLIA, 1957-60, OSCAR NIEMEYER



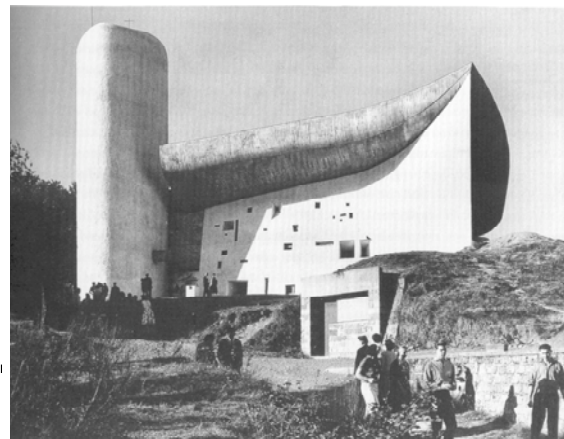
DUN2002_90

CAPELA DE RONCHAMP, 1950-55, LE CORBUSIER



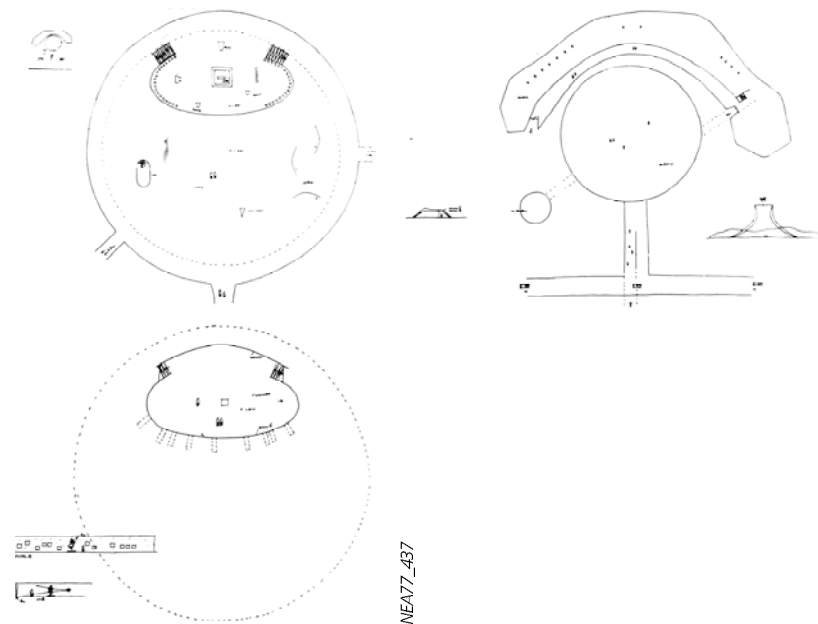
CKF2001_176

CKF2001_168



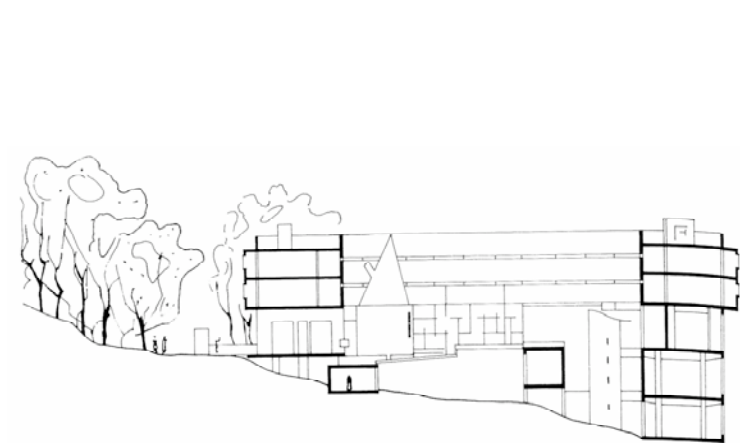
CKF2001_169

CATEDRAL DE BRASÍLIA, 1959, OSCAR NIEMEYER

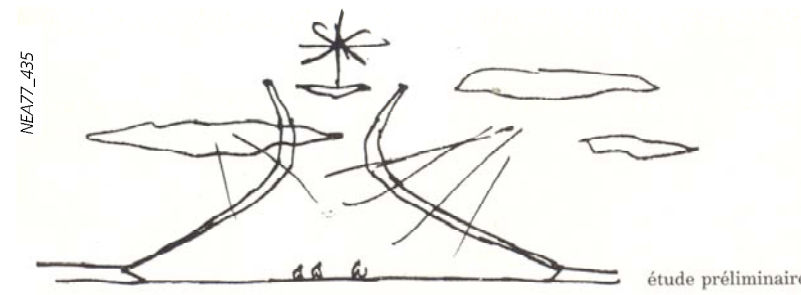
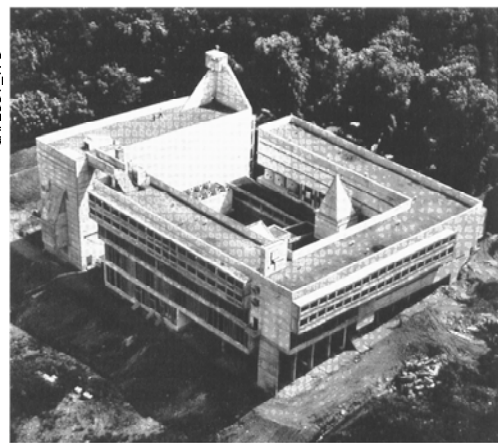


NEA77_437

CONVENTO DE LA TOURETTE, 1953-60, LE CORBUSIER

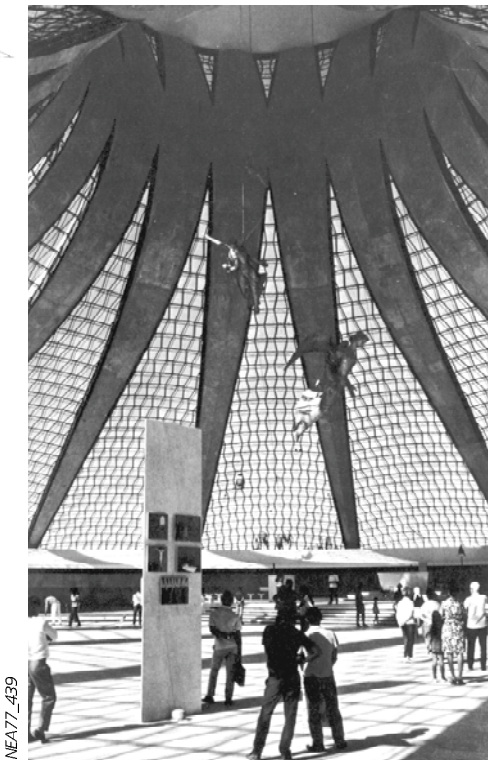


CKF2001_175



NEA77_435

étude préliminaire



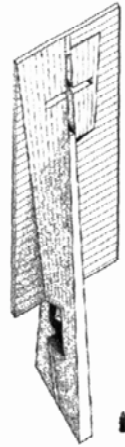
NEA77_439



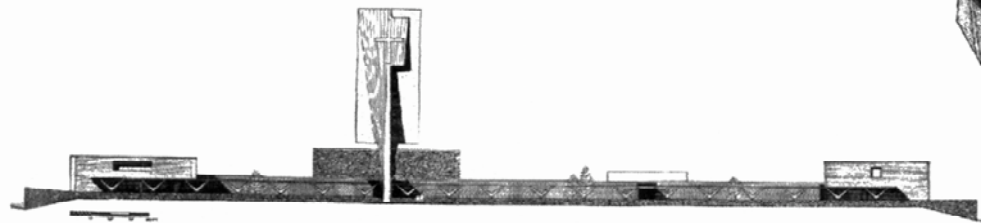
IGREJA DE FÁTIMA, BRASÍLIA, 1958, OSCAR NIEMEYER



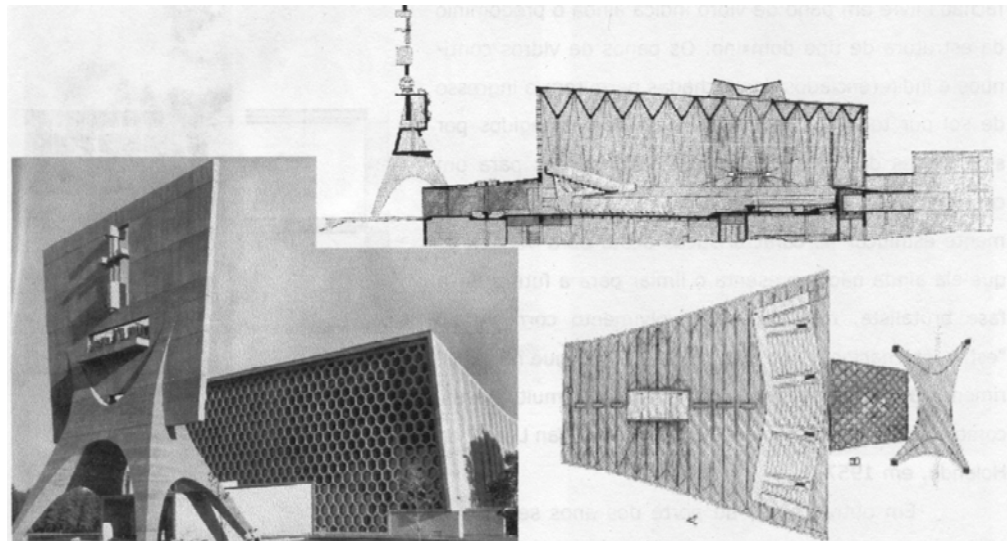
CONVENTO DA ANUNCIÇÃO, 1954-62, MARCEL BREUER



BREG2_106

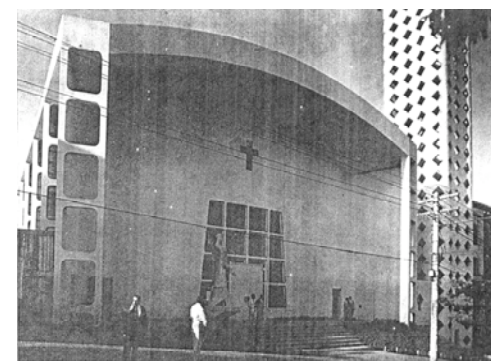
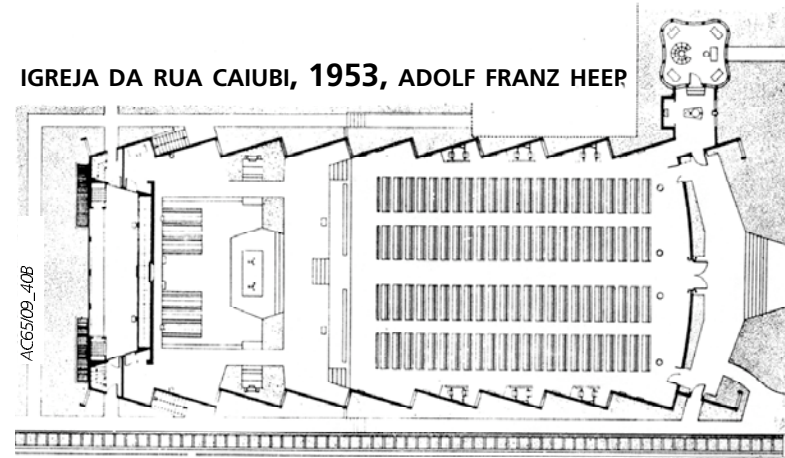


ABADIA DA UNIVERSIDADE DE SI. JOHN, 1953-61, MARCEL BREUER

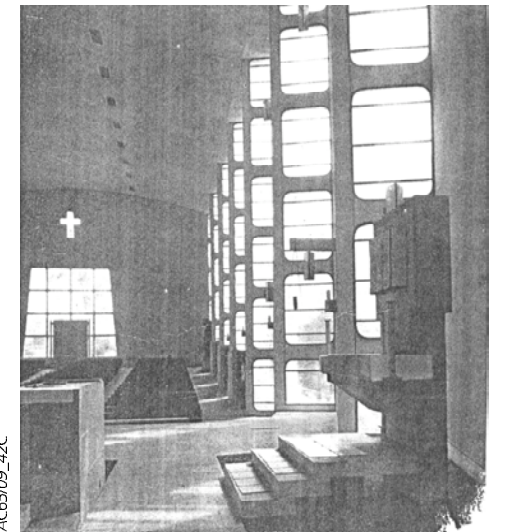


BREG2_36

IGREJA DA RUA CAIUBI, 1953, ADOLF FRANZ HEER

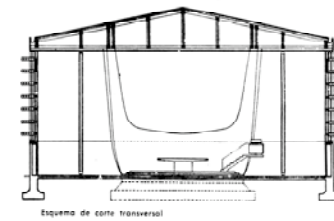


AC65/09_40A



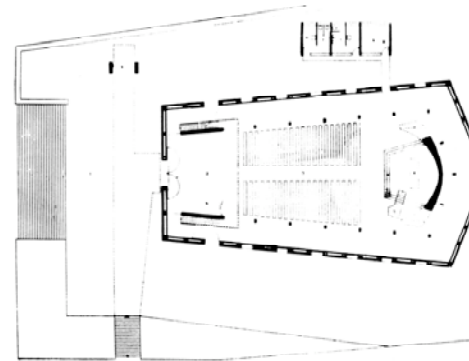
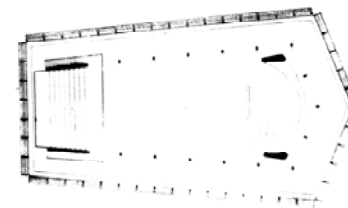
AC65/09_42C

IGREJA EM ITROUPAVA SECA, 1958, HANS BROOS

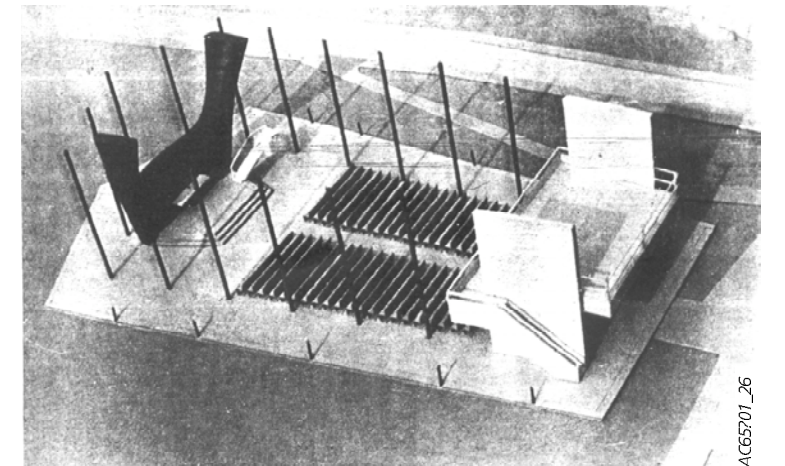


Esquema de corte transversal

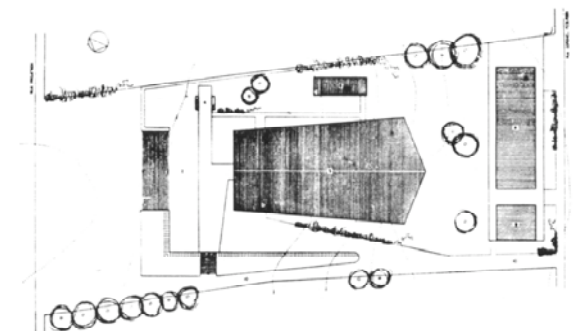
- Planta superior
- 1 Claustro
- 2 Vazio da nave



AC65/01_27C



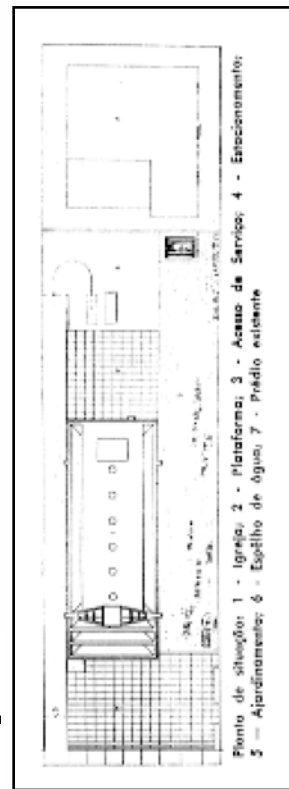
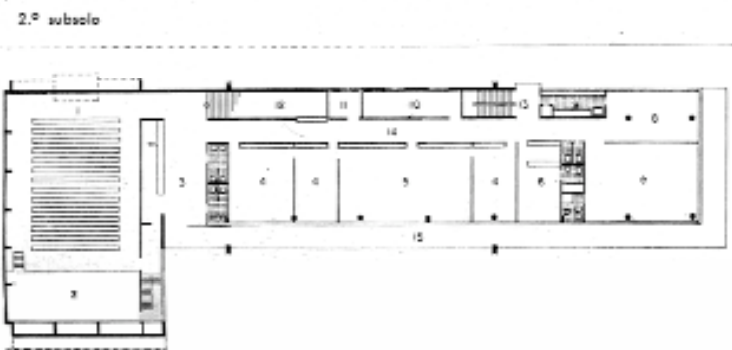
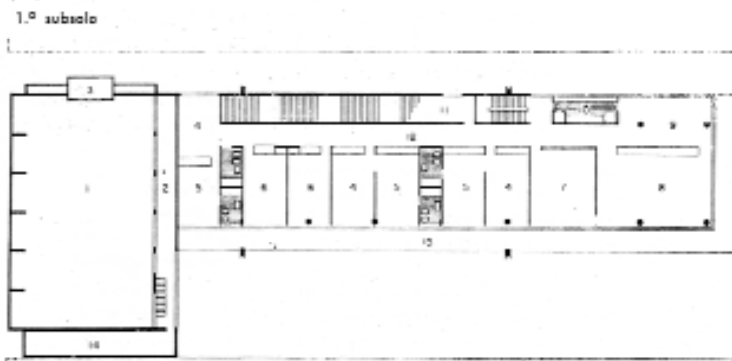
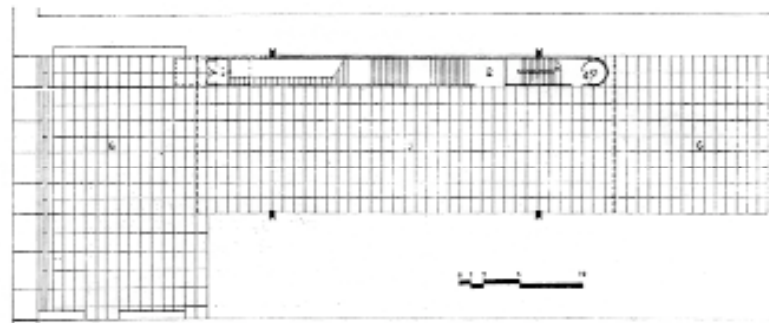
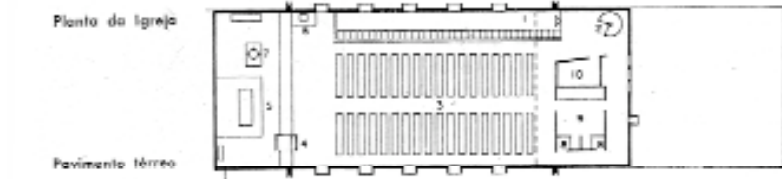
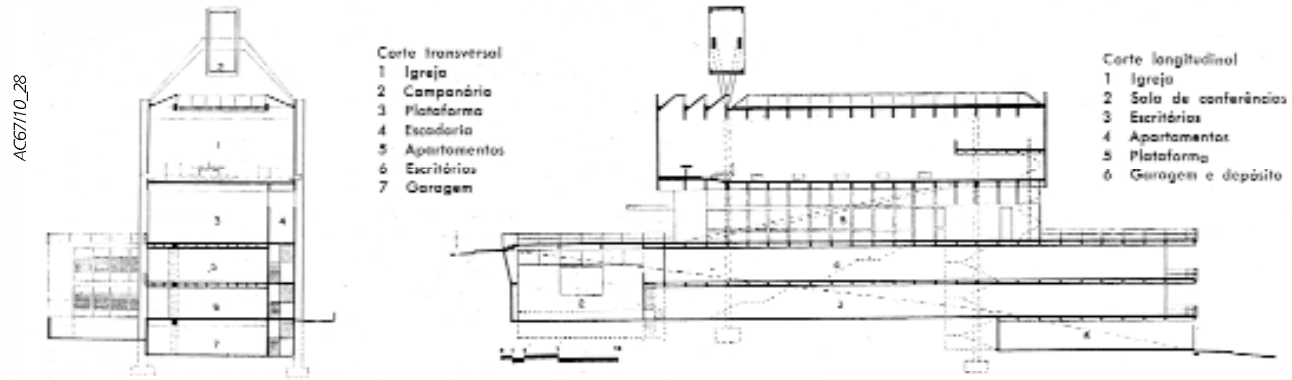
AC65/01_26



- Planta de situação
- 1 Estacionamento
- 2 Praça
- 3 Marquise
- 4 Torre
- 5 Capela
- 6 Sacristia
- 7 Parque
- 8 Residência do Pastor
- 9 Jardim de infância
- 10 Acesso lateral

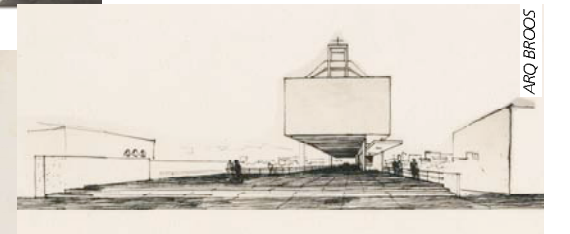
AC65/01_28

CENTRO PAROQUIAL SÃO BONIFÁCIO, 1964, HANS BROOS



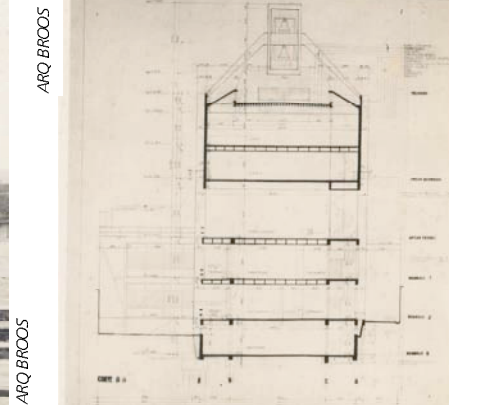
AC6710_28

AC6710_28



ARQ BROOS

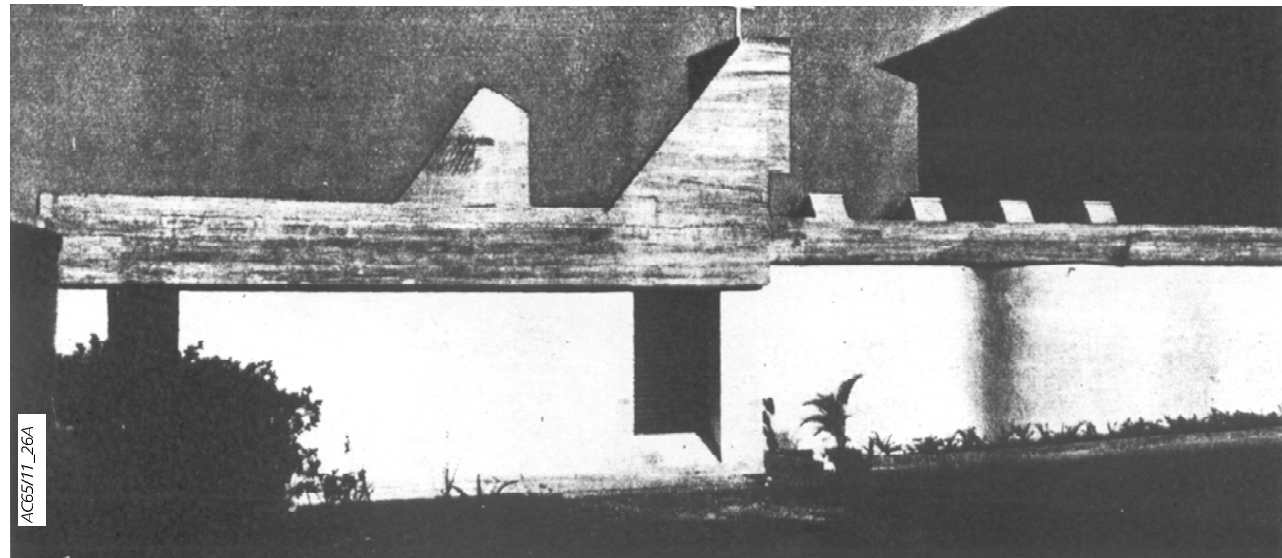
ARQ BROOS



ARQ BROOS

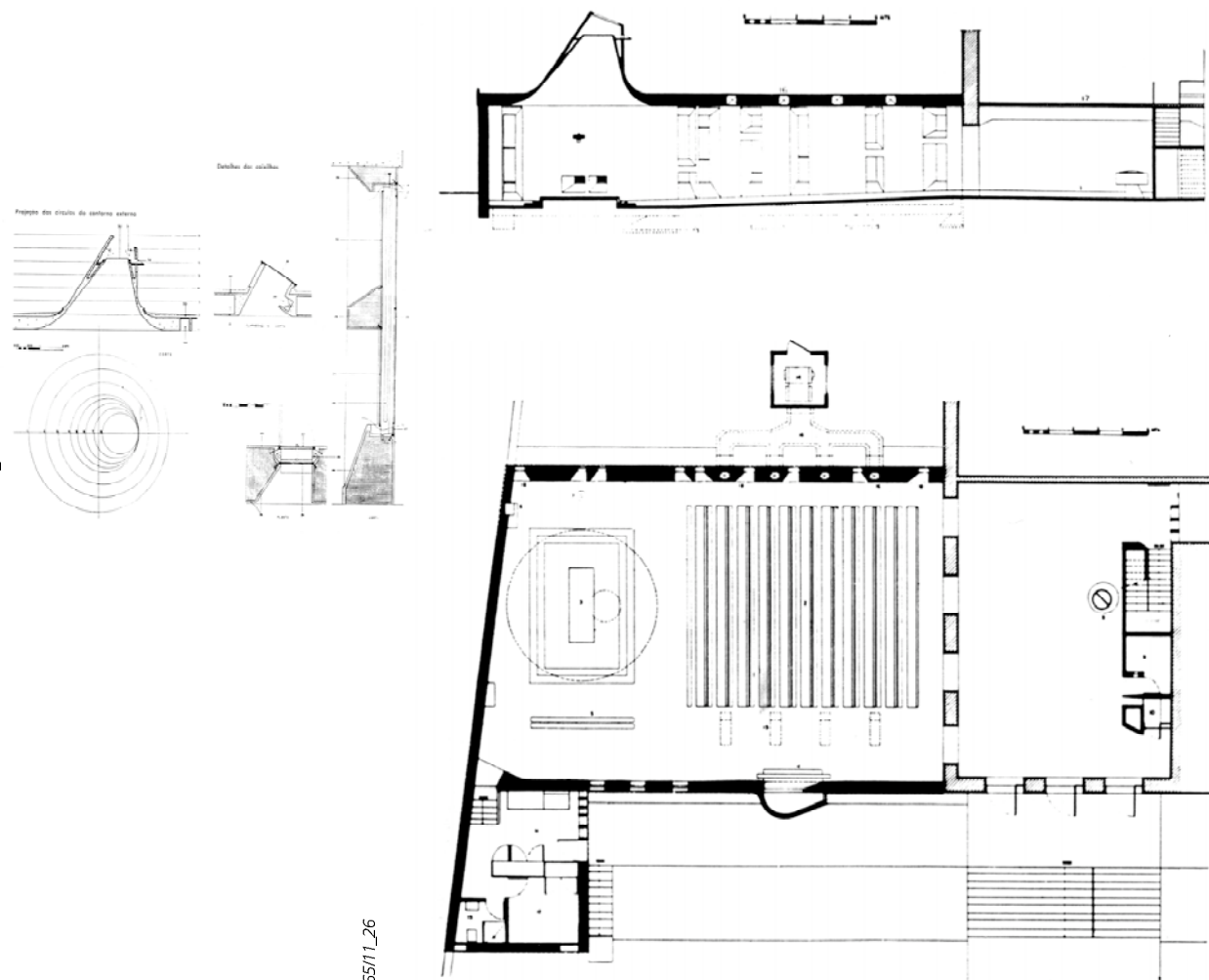
ARQ BROOS

CAPELA DA COLONIA FRANCESA, ANEXO AO LICEU PASTEUR, 1965,
JERONIMO BONILHA ESTEVES E ISRAEL SANCOVSKI



AC65/11_26A

AC65/11_27

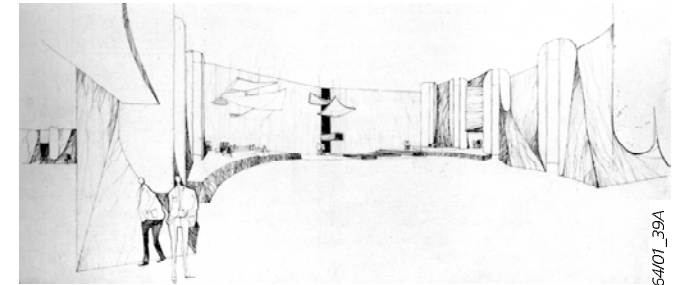
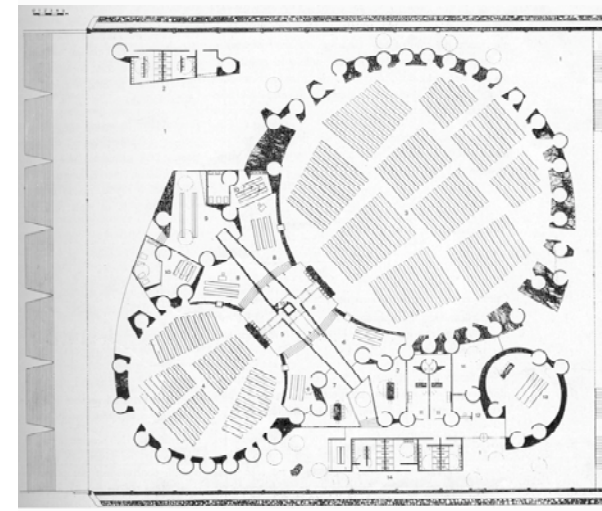


AC65/11_26

IGREJA PRESBITERIANA NACIONAL, 1964, UBIRAJARA RIBEIRO [CONCURSO, 1º LUGAR]



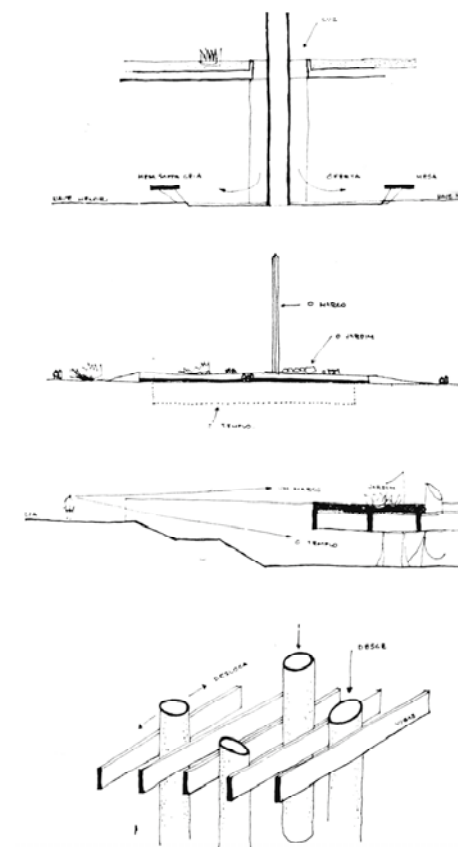
AC64/01_38A



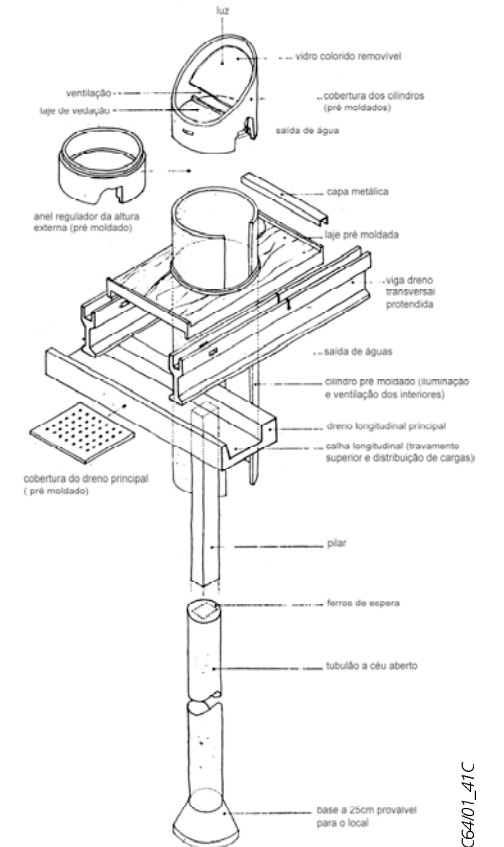
AC64/01_39A



AC64/01_41AB

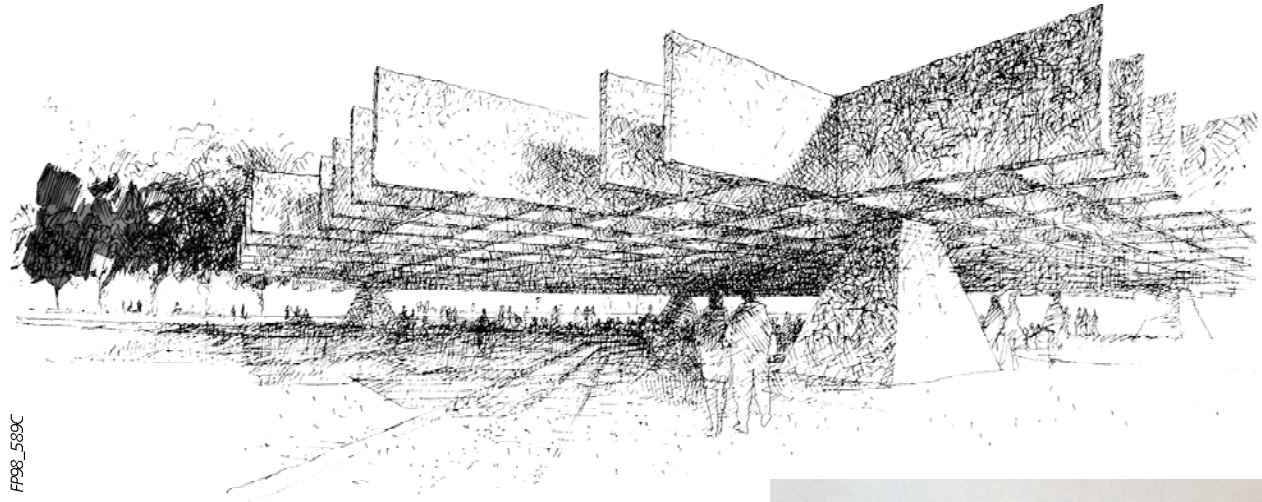


AC64/01_39B

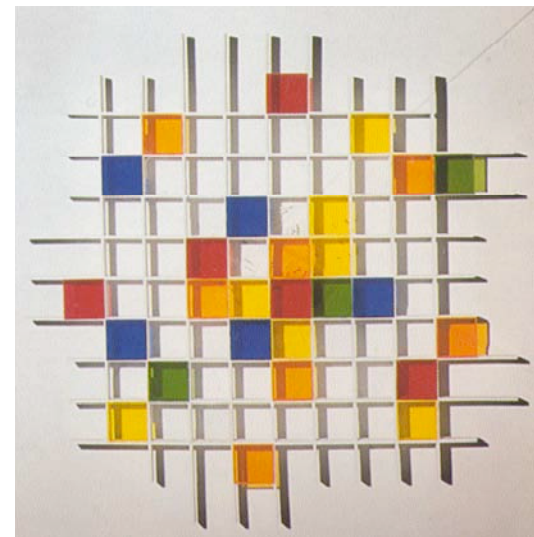


AC64/01_41C

IGREJA PRESBITERIANA NACIONAL, BRASÍLIA, 1965, FABIO PENTEADO [CONCURSO, NÃO PREMIADO]

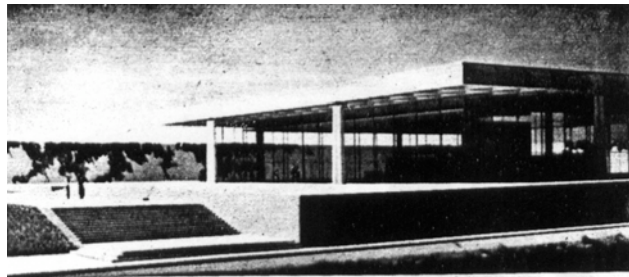


FP98_589C



FP98_58A

EDIFÍCIO BACARDI, CUBA, 1957, MIES VAN DER ROHE



NOVA GALERIA NACIONAL, BERLIN, 1962-8, MIES VAN DER ROHE



MAL2001_369