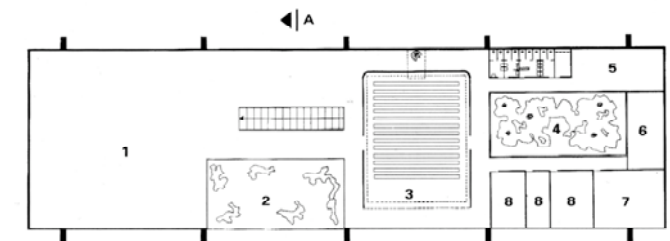
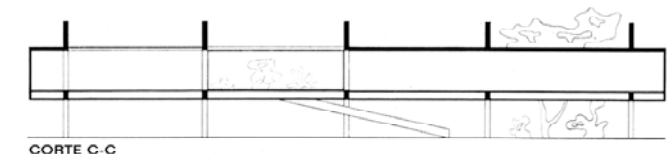
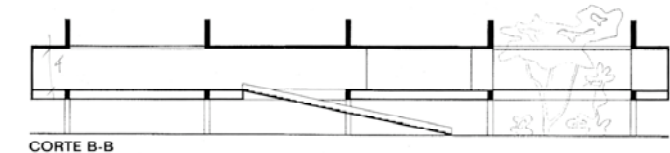
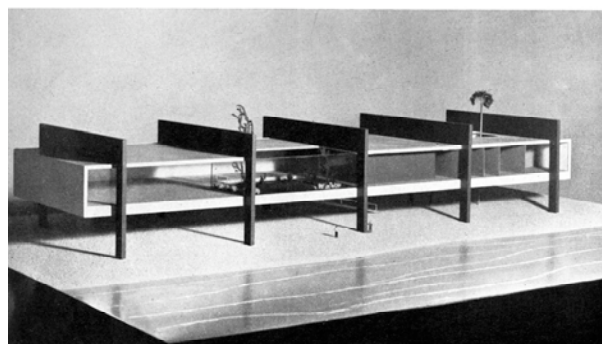
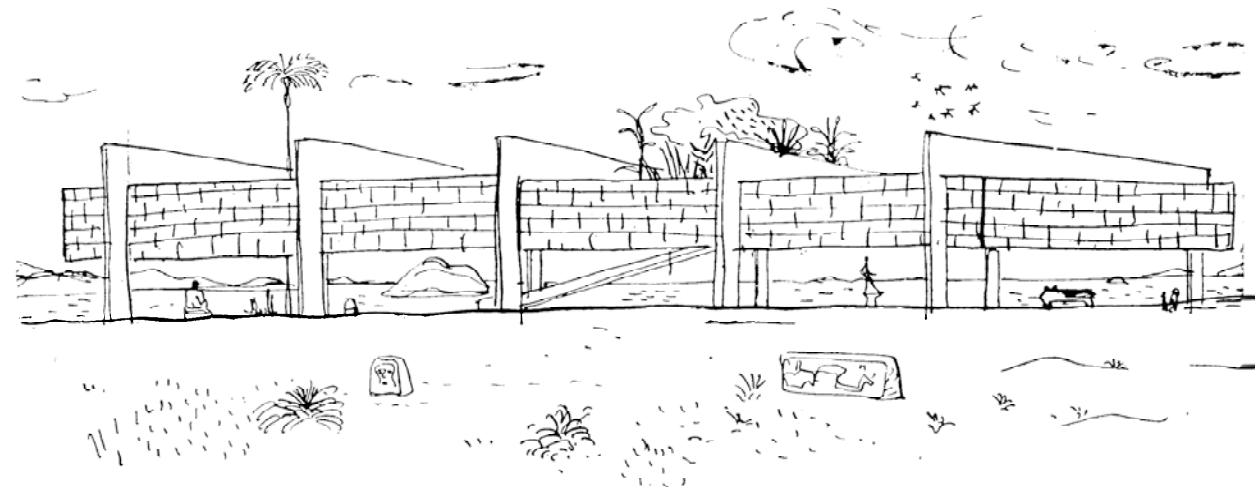
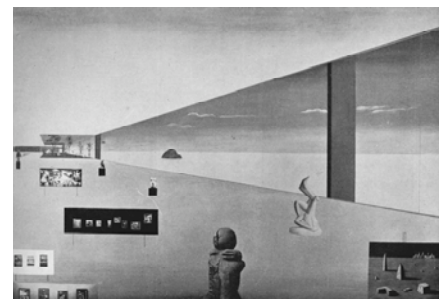


7.4.6 EDIFÍCIOS CULTURAIS E MUSEUS: CULTURA COMO REPRESENTAÇÃO

MUSEU EM SÃO VICENTE, 1951, LINA BO BARDI



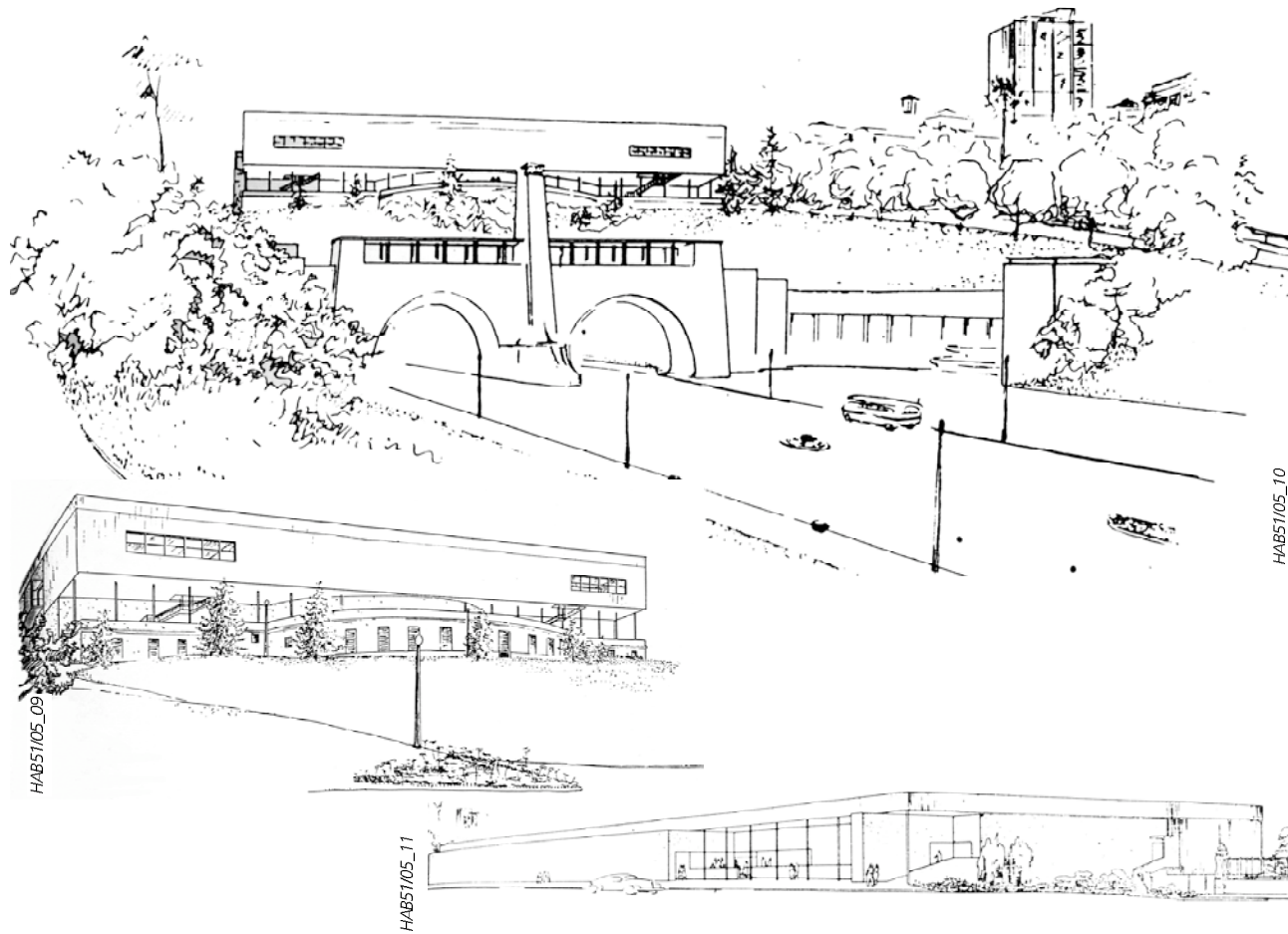
- 1 Pinacoteca
- 2 Exposições ao ar livre
- 3 Auditório
- 4 Pátio
- 5 Manutenção
- 6 Administração
- 7 Biblioteca
- 8 Sala de aula



LBO96_90

LBO96_93

PAVILHÃO DE EXPOSIÇÕES DA 1ª BIENAL INTERNACIONAL DE ARTE DE SÃO PAULO, 1951, LUIS SAIA



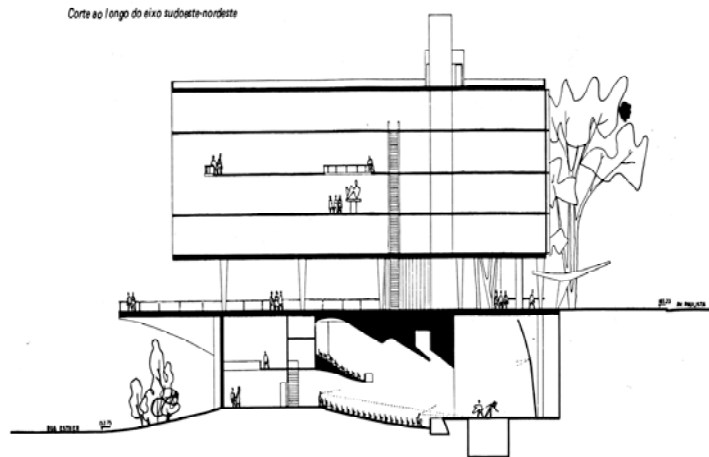
HAB51/05_10

HAB51/05_09

HAB51/05_11

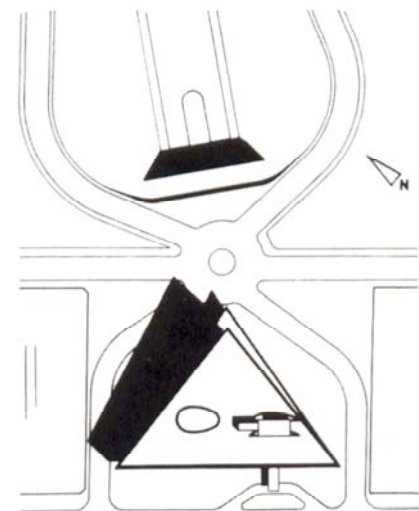
MUSEU DE ARTES VISUAIS, 1952, AFFONSO EDURADO REIDY

Corte ao longo do eixo sudoeste-nordeste



Museu de Artes Visuais de São Paulo – projeto
 Av. Paulista – São Paulo
 São Paulo, SP
 projeto solicitado por Francisco Matarazzo Sobrinho

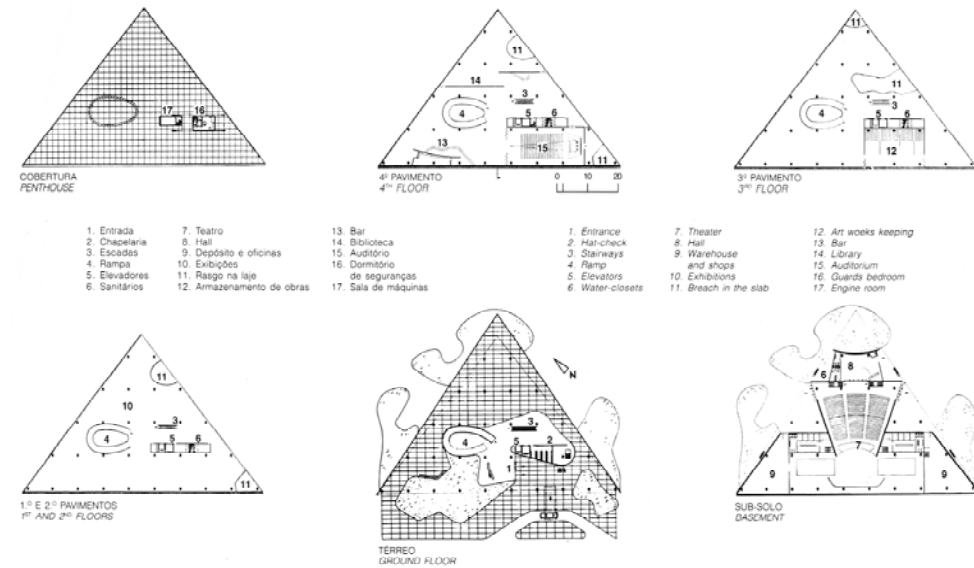
REIDY99_154



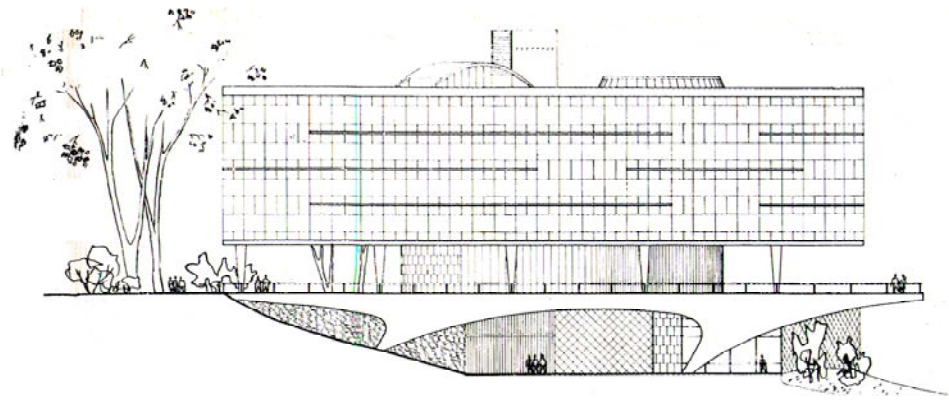
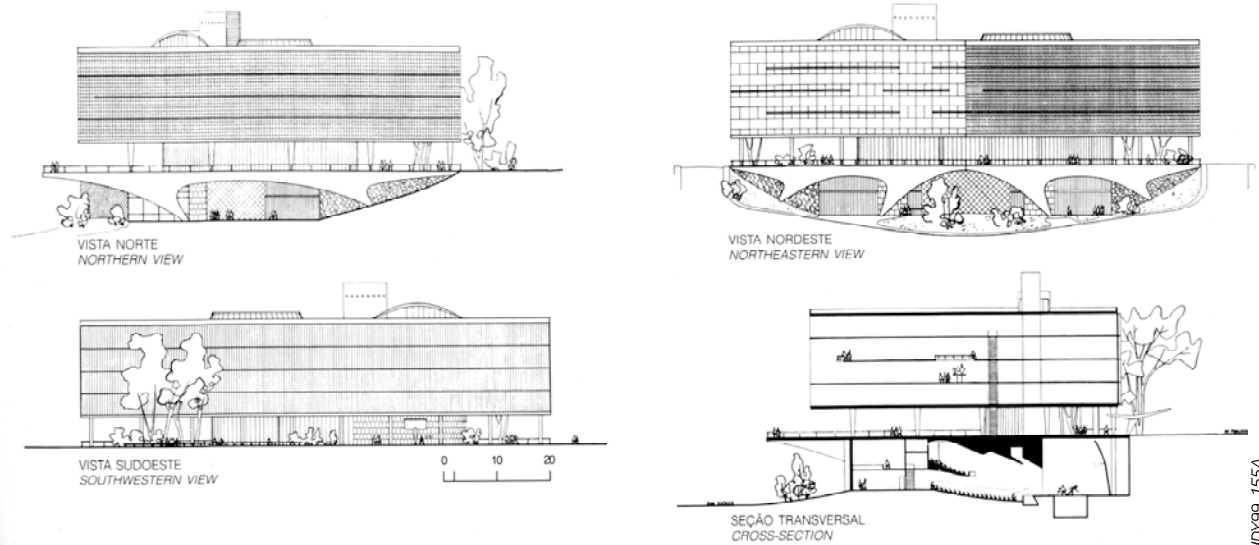
IMPLANTAÇÃO
IMPLANTATION

REIDY99_155A

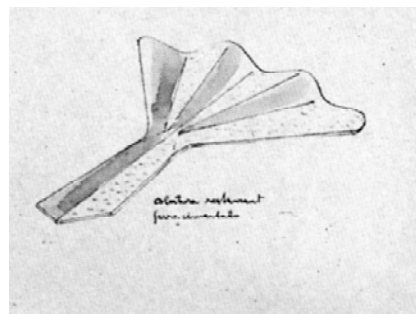
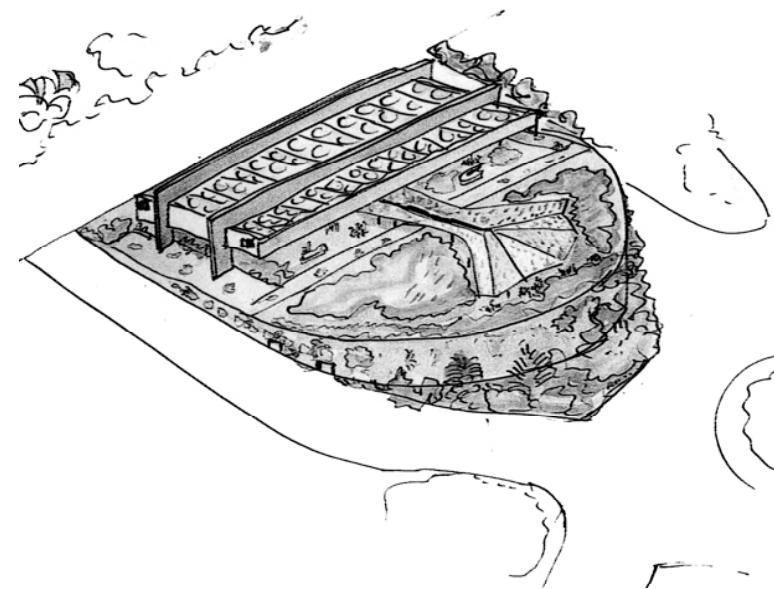
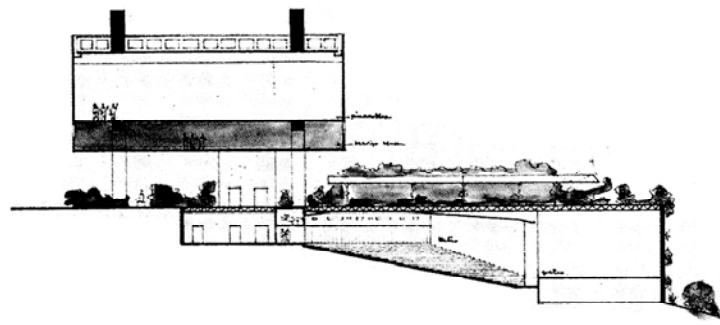
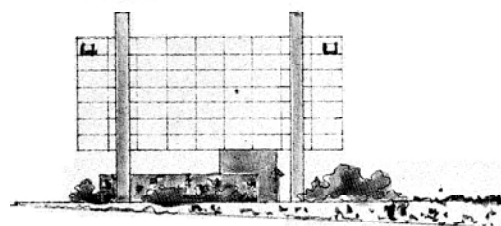
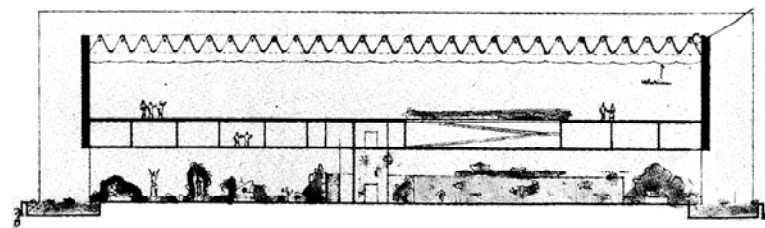
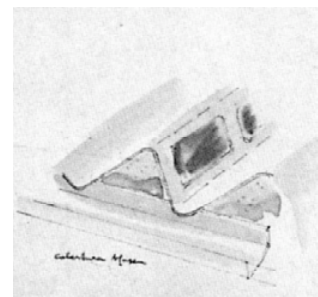
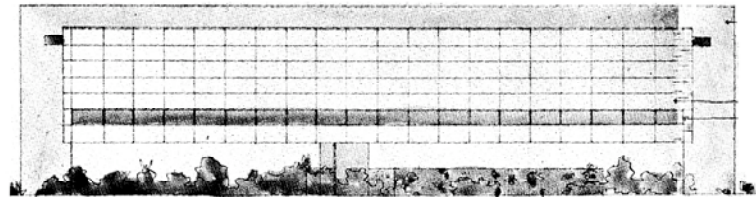
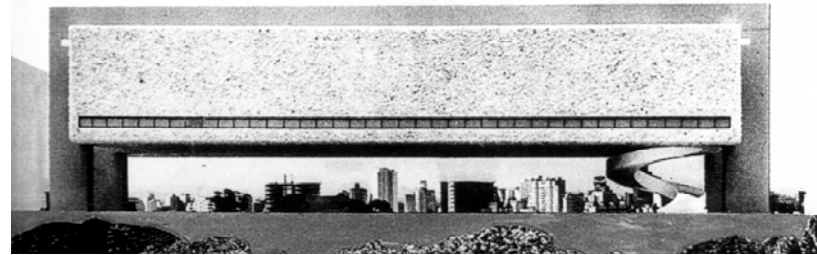
REIDY99_155B



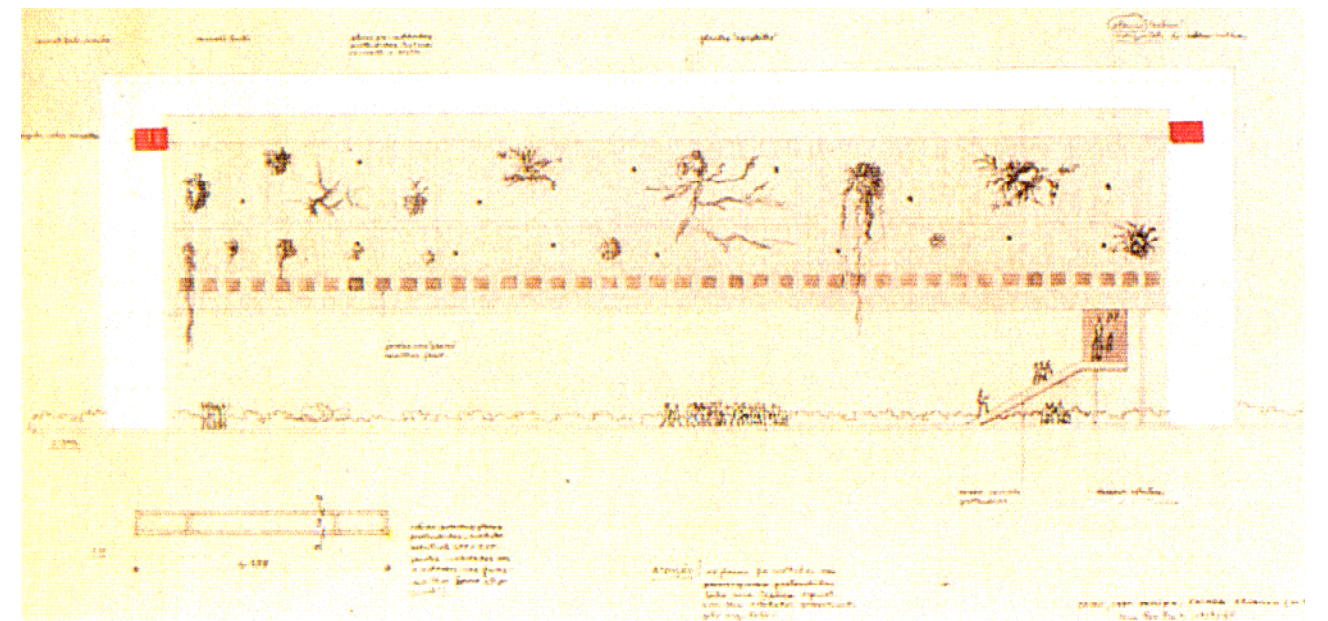
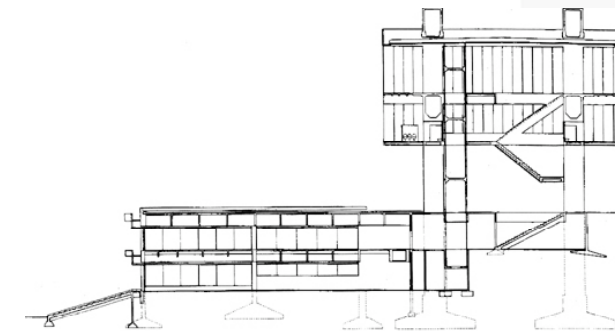
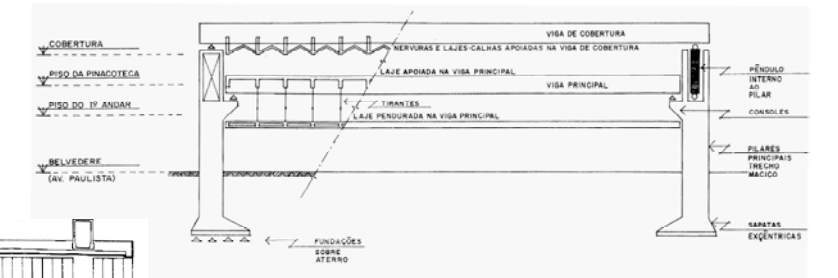
- | | | | | | |
|---------------|----------------------------|-----------------------------|------------------|------------------------|-----------------------|
| 1. Entrada | 7. Teatro | 13. Bar | 1. Entrance | 7. Theater | 12. Art works keeping |
| 2. Chaparia | 8. Hall | 14. Biblioteca | 2. Hair-check | 8. Hall | 13. Bar |
| 3. Escadas | 9. Depósito e oficinas | 15. Auditório | 3. Stairways | 9. Warehouse and shops | 14. Library |
| 4. Rampas | 10. Exibições | 16. Dormitório de segurança | 4. Ramp | 10. Exhibitions | 15. Auditorium |
| 5. Elevadores | 11. Rasojo na laje | 17. Sala de máquinas | 5. Elevators | 11. Breach in the slab | 16. Guards bedroom |
| 6. Sanitários | 12. Armazenamento de obras | | 6. Water-closets | | 17. Engine room |

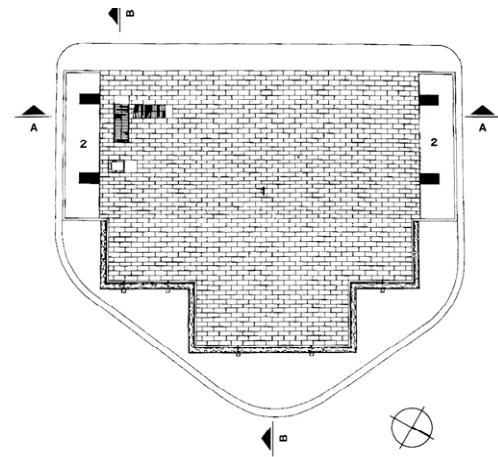
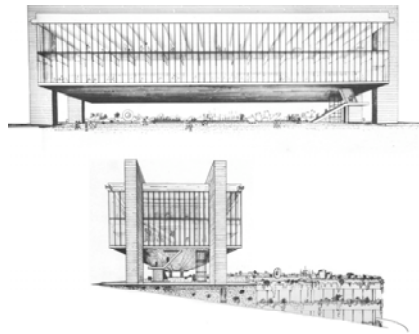


MUSEU DE ARTE DE SÃO PAULO, 1º PROJETO, 1958, LINA BO BARDI



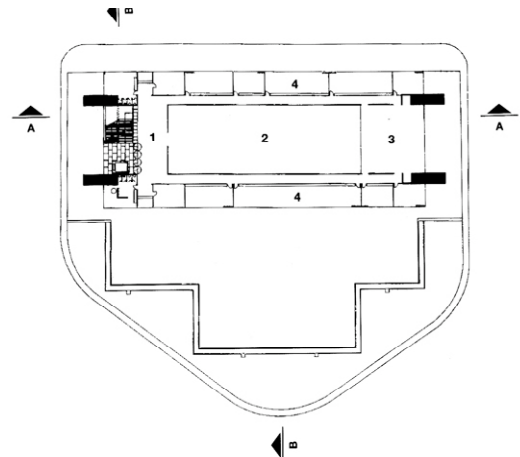
MUSEU DE ARTE DE SÃO PAULO, 2º PROJETO, 1961, LINA BO BARDI





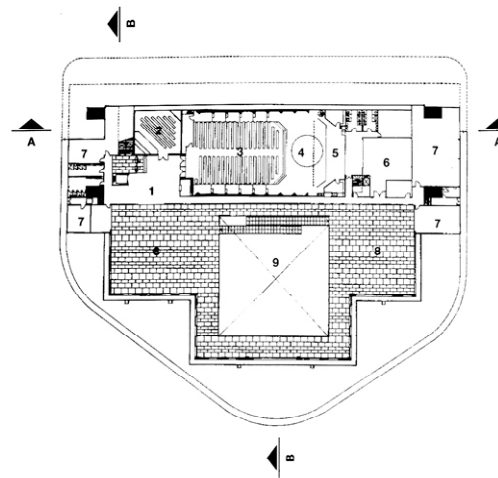
PLANTA NÍVEL 0.00
FLOOR PLAN, LEVEL 0.00

- 1. Belvedere
- 2. Espelho d'água



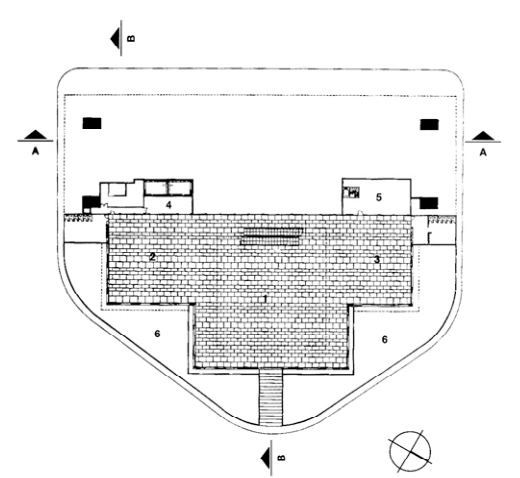
PLANTA NÍVEL + 8.40
FLOOR PLAN, LEVEL + 8.40

- 1. Hall
- 2. Exposições Temporárias
- 3. Acervo
- 4. Administração



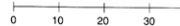
PLANTA NÍVEL - 4.50
FLOOR PLAN, LEVEL - 4.50

- 1. Foyer
- 2. Pequeno auditório
- 3. Teatro
- 4. Palco
- 5. Bastidores
- 6. Manutenção
- 7. Depósito
- 8. Exposições
- 9. Vazio do hall

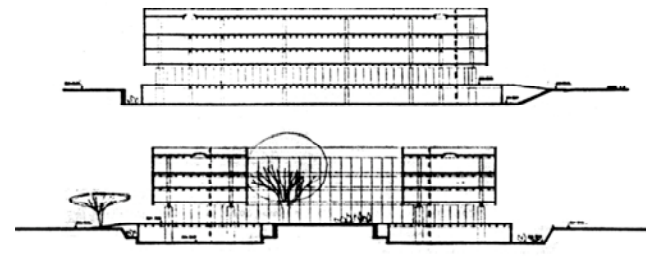


PLANTA NÍVEL - 9.50
FLOOR PLAN, LEVEL - 9.50

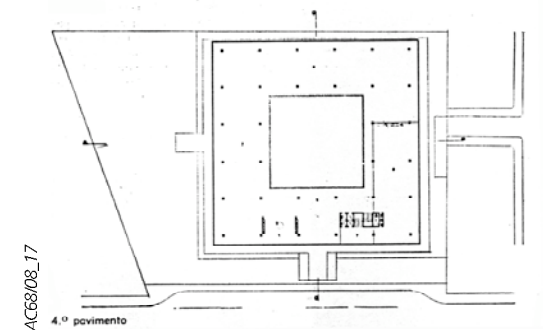
- 1. Hall cívico
- 2. Biblioteca
- 3. Restaurante
- 4. Serviços
- 5. Cozinha
- 6. Espelho d'água



CONCURSO PARA BIBLIOTECA DE SALVADOR, 1968, 1º LUGAR, ENRIQUE ALVAREZ, RODRIGO PONTUAL, ULRICO ZURCHER

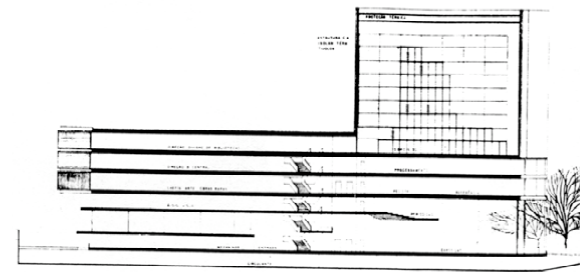


AC68/08_17

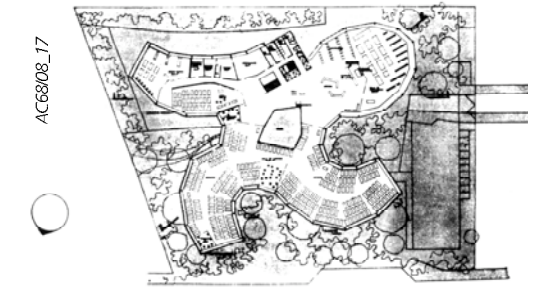


AC68/08_17
4.º pavimento

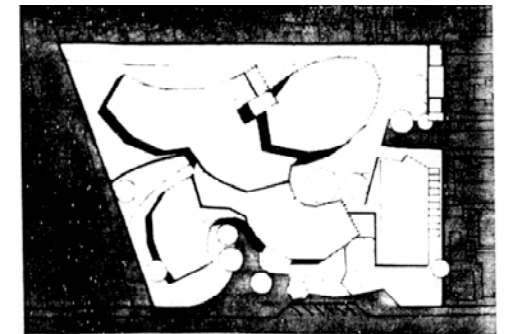
CONCURSO PARA BIBLIOTECA DE SALVADOR, 1968, 2º LUGAR, JOAQUIM GUEDES



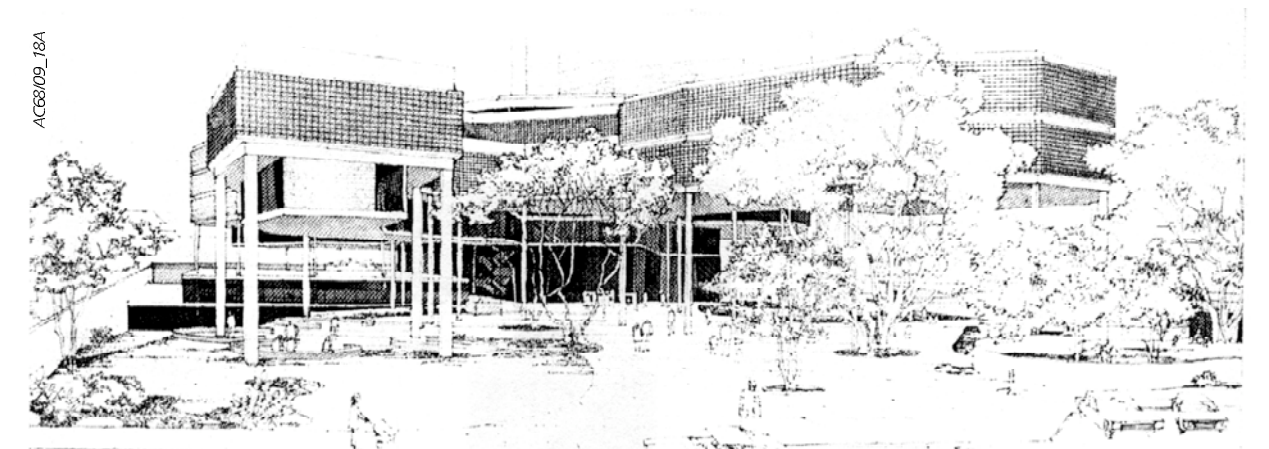
AC68/09_18



AC68/08_17



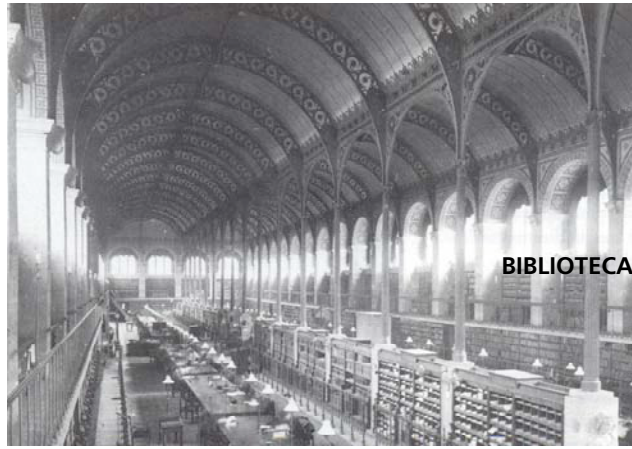
AC68/09_18A





BIBLIOTECA NACIONAL DE PARIS, ETIENNE-LOUIS BOULLÉ

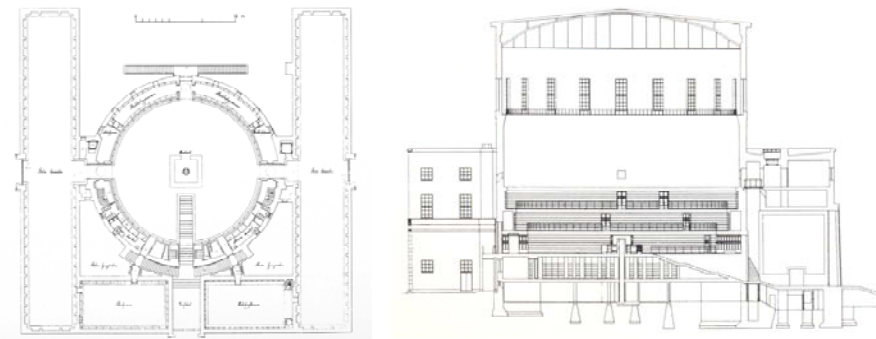
KG889_107



BIBLIOTECA DE SAINT GENEVIEVE, PARIS, 1843, HENRI LABROUSTE

MAC96_38

BIBLIOTECA DE ESTOLCOMO, 1918-27, ERIK GUNNAR ASPLUND



ASP85_93A

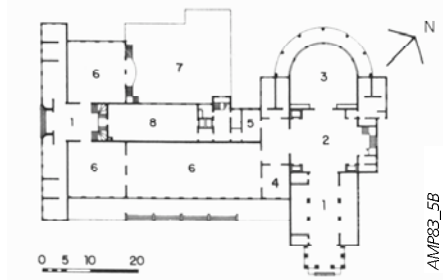
BIBLIOTECA MUNICIPAL DE SÃO PAULO, 1935, JACQUES PILON



AMP83_5A

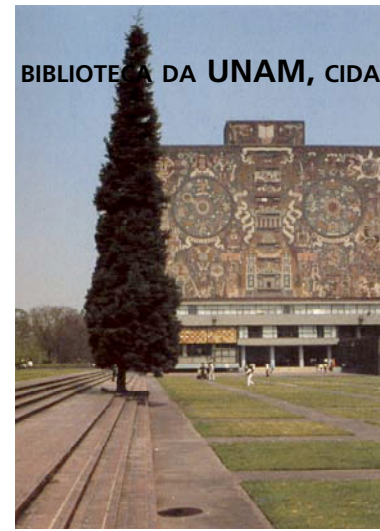


AMP83_5C



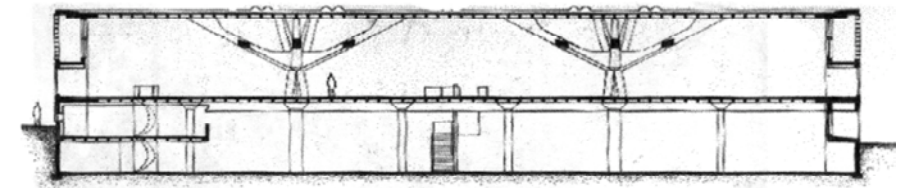
AMP83_5B

0 5 10 20

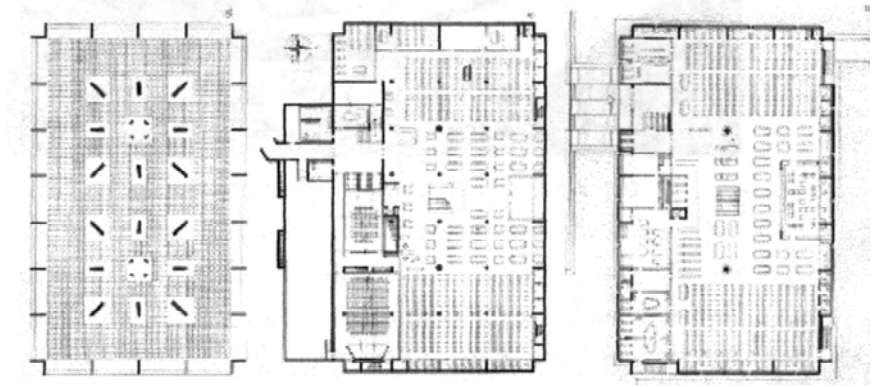


BIBLIOTECA DA UNAM, CIDADE DO MÉXICO, 1953, JUAN O' GORMAN

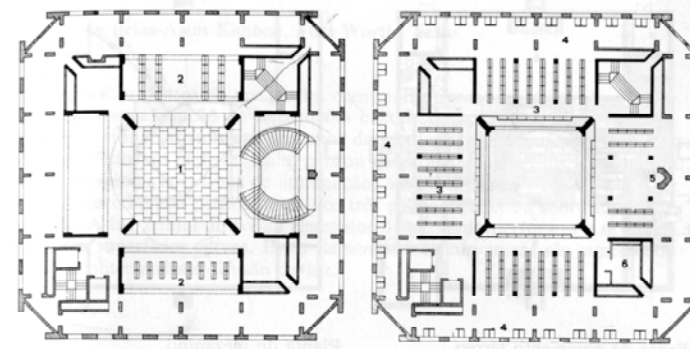
BIBLIOTECA DA UNIOVERSIDADE ST. JOHN, 1961, MARCEL BREUER



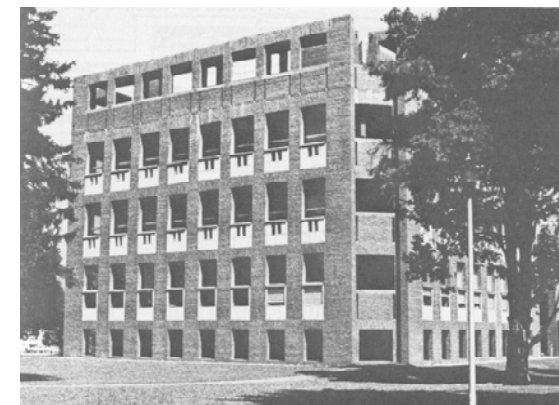
BRE62_23



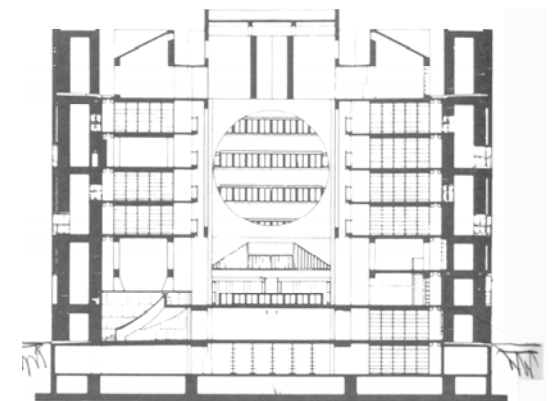
BIBLIOTECA DE EXETER, NEW HAMPSHIRE, 1967-72, LOUIS KAHN



KGIM94_81A



KGIM94_81B

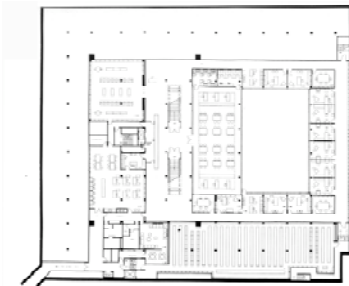


KGIM94_80B

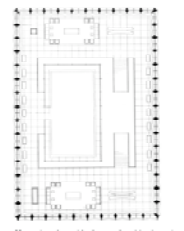
BIBLIOTECA DE LIVROS RAROS DE BEINECKE, UNIVERSIDADE DE YALE, 1963, GORDON BUNSHAFT



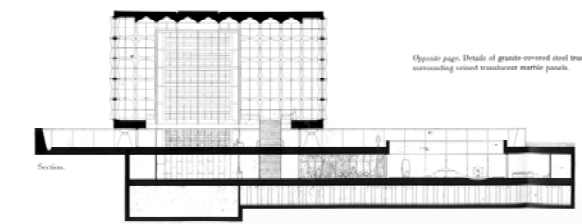
GBS88_190



Center level, with central desk, reading room, and offices around center.

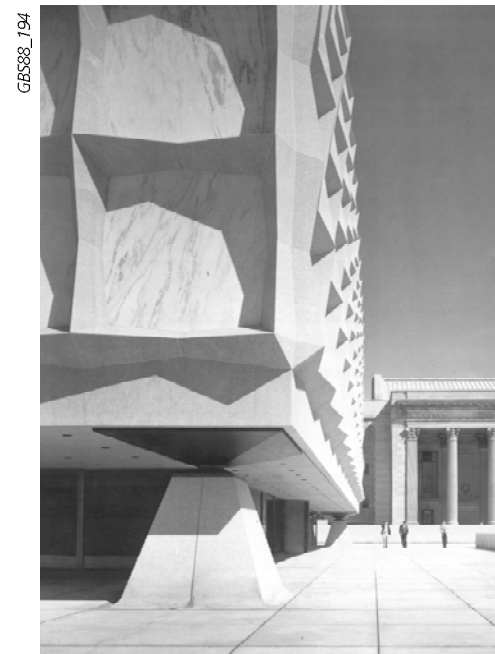


Mezzanine plan, with glass-enclosed book stacks rising from center.



GBS88_192

Opposite page: Details of granite-covered steel truss surrounding central transverse marble panels.



GBS88_194



GBS88_191



GBS88_196

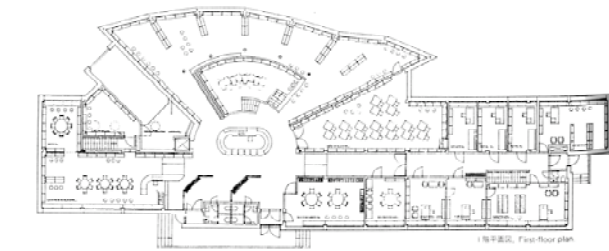
BIBLIOTECA MUNICIPAL DE SEINÄJOKI, FINLANDIA, 1963-5, ALVAR AALTO



AUA83_121B

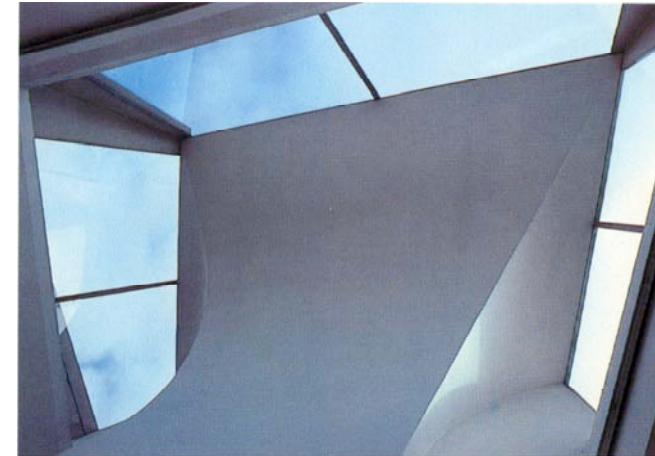


AUA83_122B

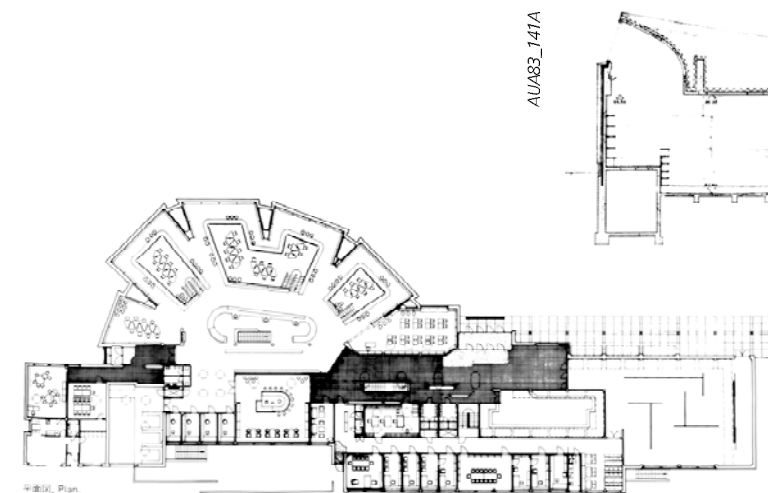


AUA83_120C

BIBLIOTECA ROVANIEMI, FINLANDIA, 1965-8, ALVAR AALTO

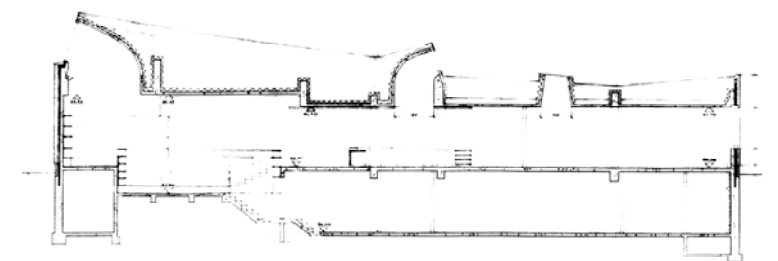


AUA83_139AB

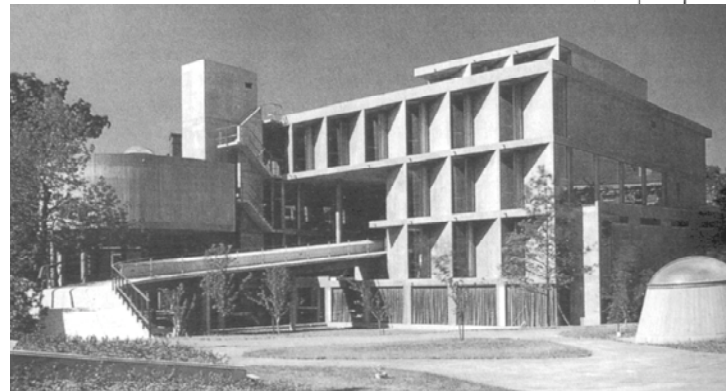
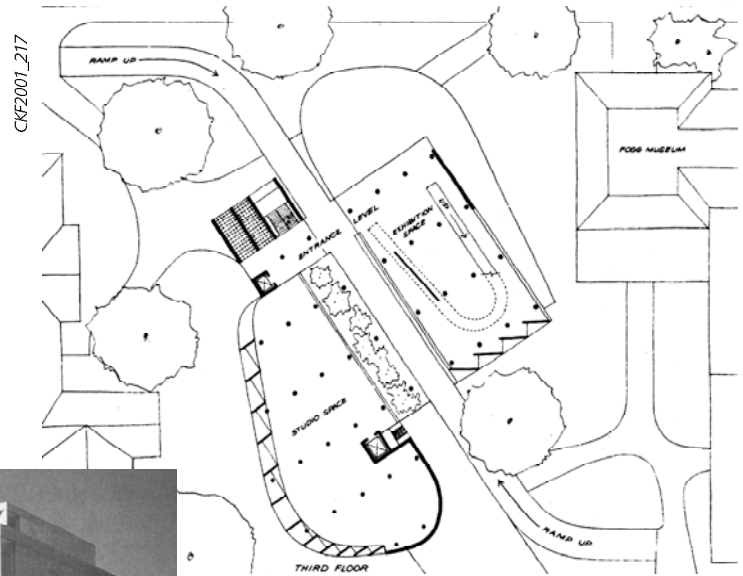


AUA83_141A

AUA83_139C



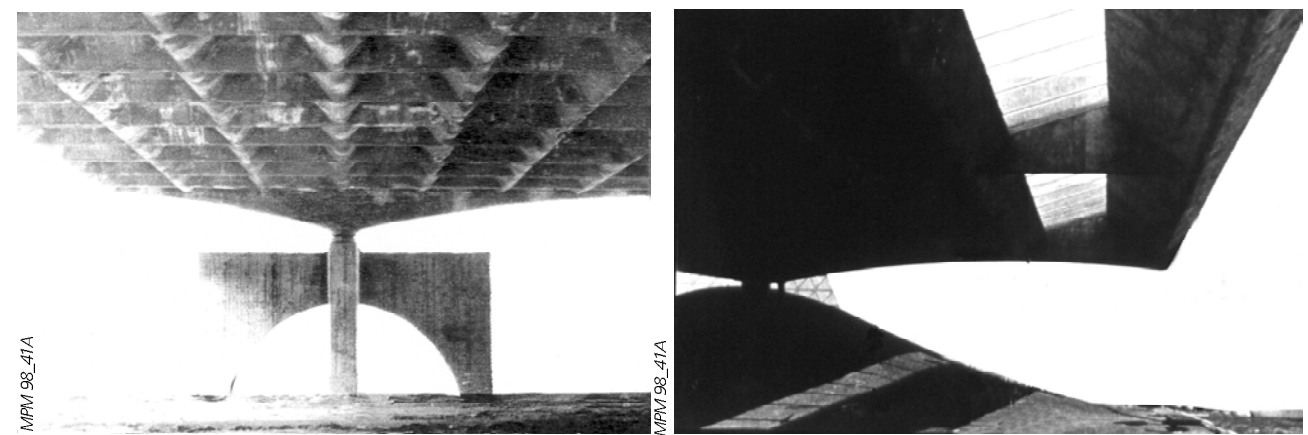
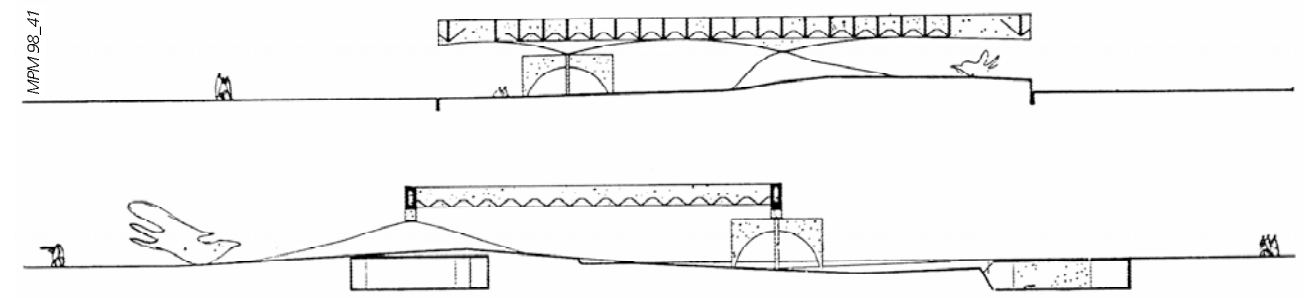
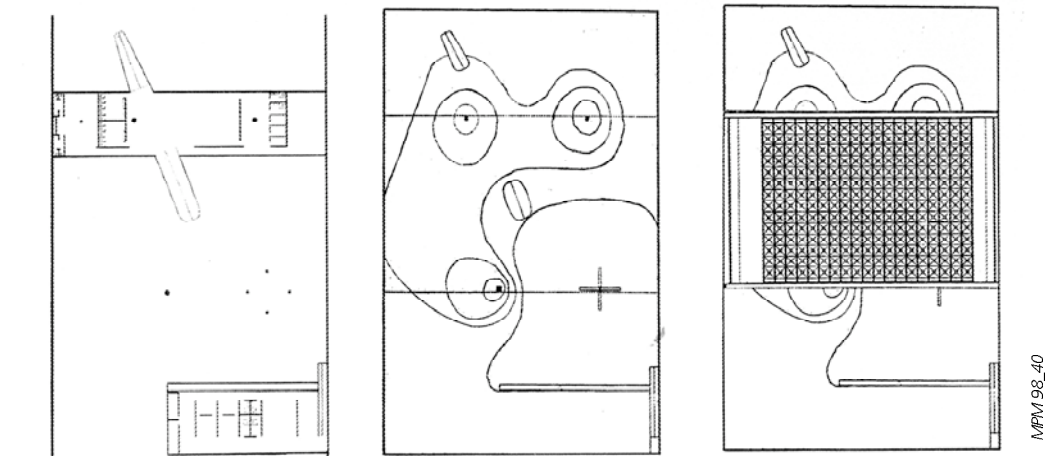
CARPENTER CENTER, CAMBRIDGE, 1961-4, LE CORBUSIER



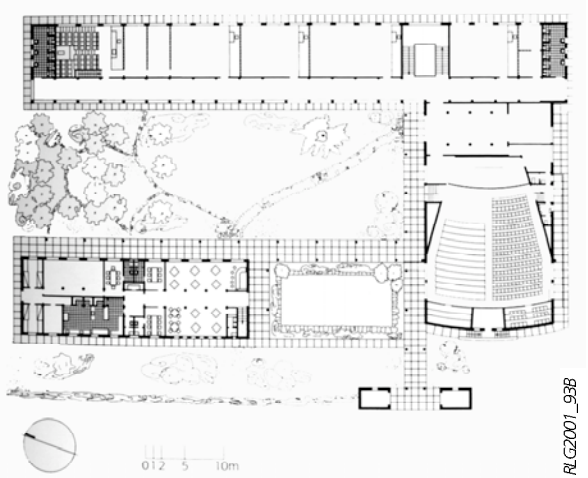
CKF2001_216

CKF2001_217

PAVILHÃO DE OSAKA NA EXPO 70, JAPÃO, 1969, PAULO MENDES DA ROCHA, JORGE CARON, JULIO KATINSKY E RUY OHTAKE



INSTITUTO SEDES SAPIENTIAE, 1940-2, RINO LEVI



RLG2001_83

RLG2001_93B

MPM 98_41

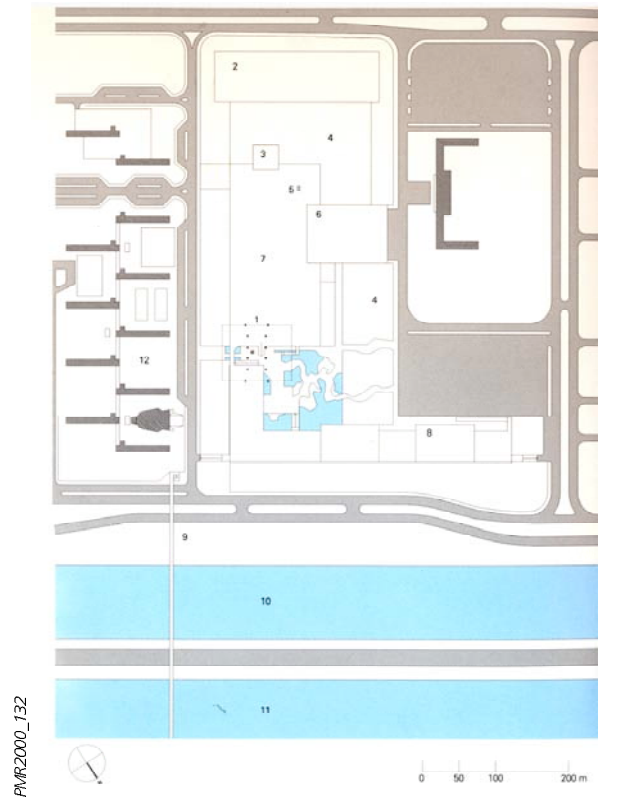
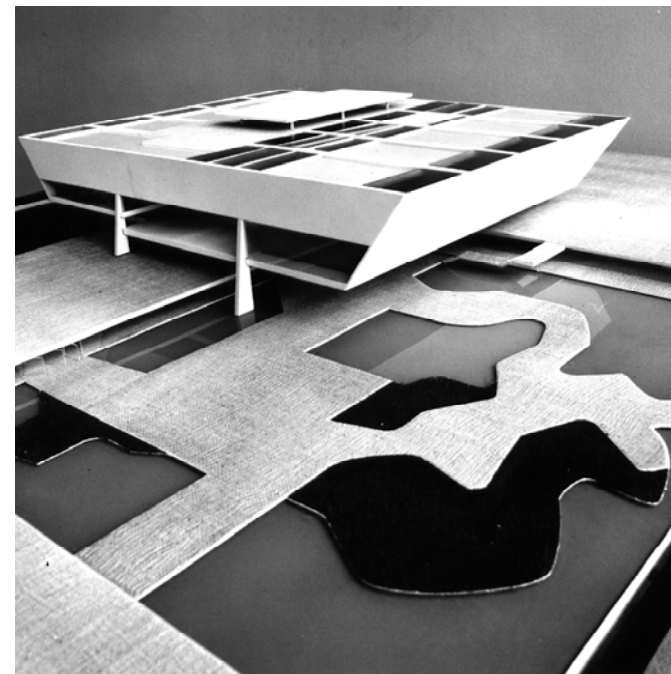
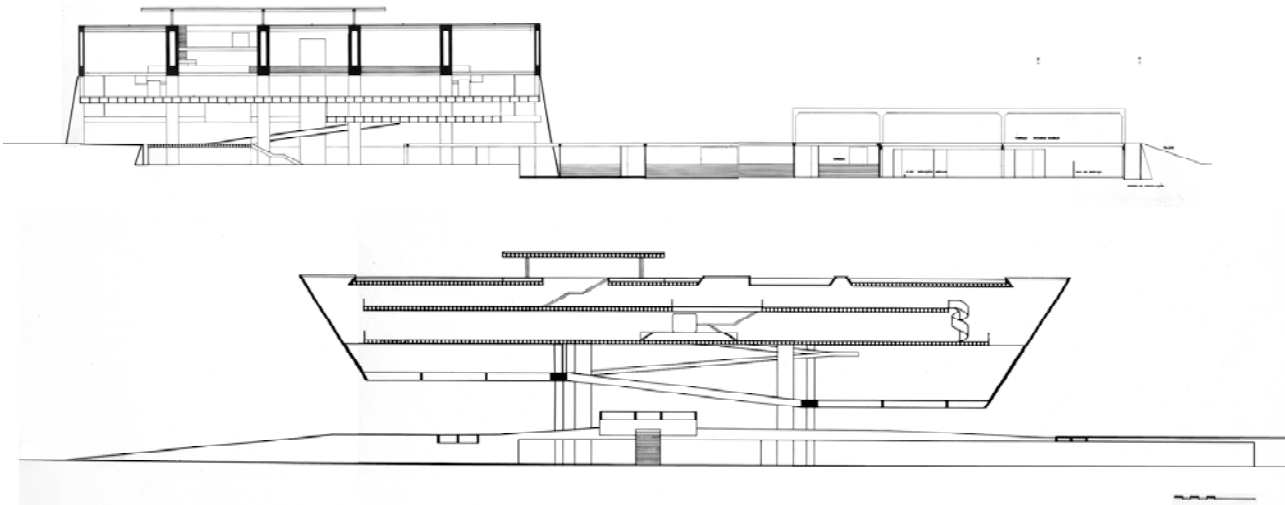
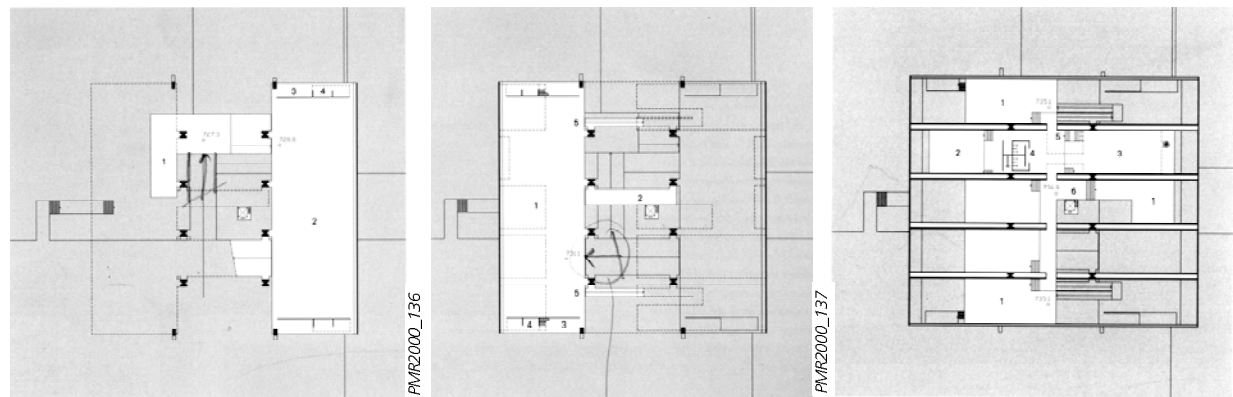
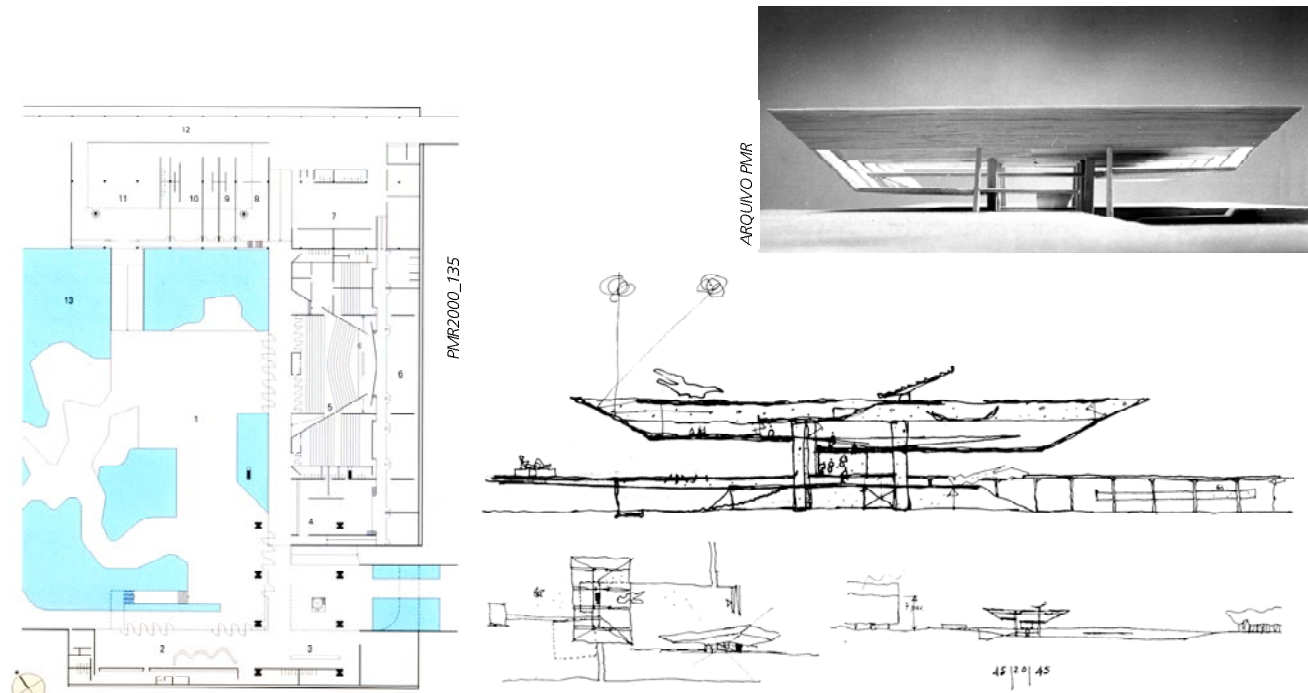
MPM 98_40

MPM 98_41A

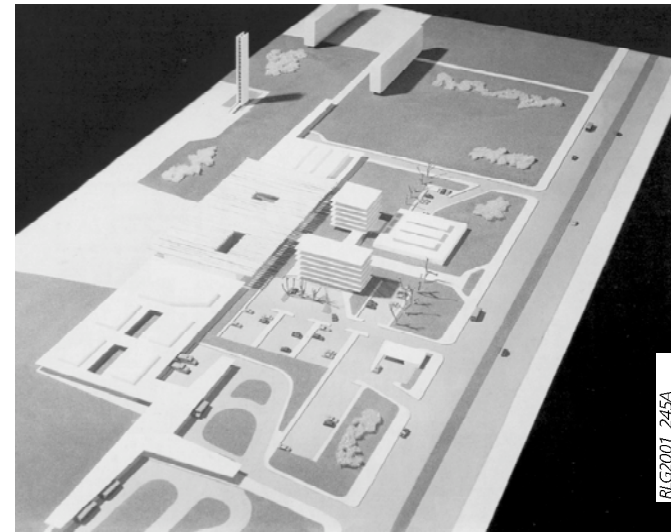
MPM 98_41A

MPM 98_41A

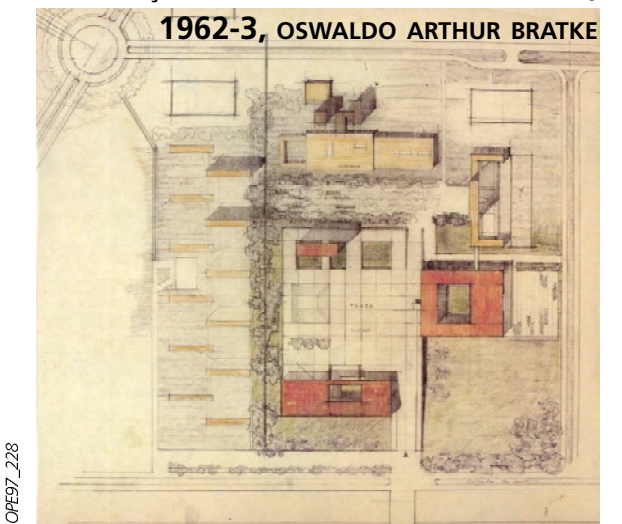
MUSEU DE ARTE CONTEMPORÂNEA DA USP (MAC-USP), 1975,
PAULO MENDES DA ROCHA, JORGE WILHEIM, LEO TOMCHINSKY



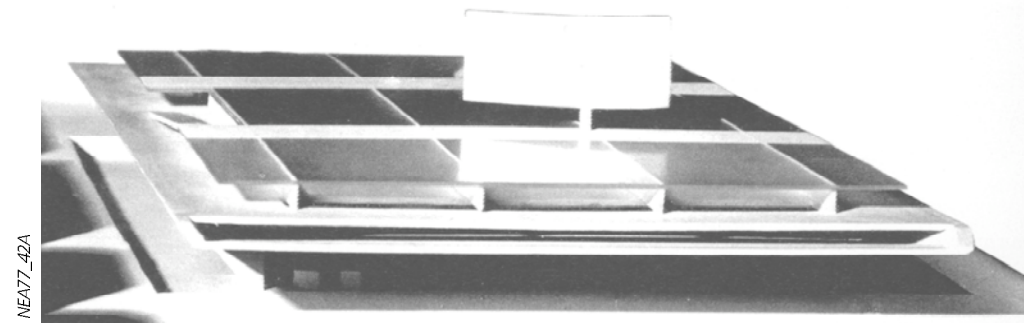
PRAÇA MAIOR DO CAMPUS BUTANTÃ USP, 1962, RINO LEVI



PRAÇA MAIOR DO CAMPUS BUTANTÃ USP,
1962-3, OSWALDO ARTHUR BRATKE

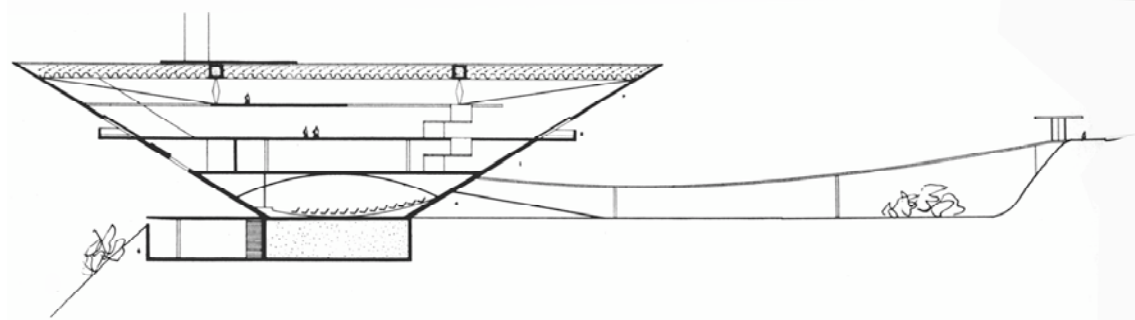


CONCURSO PARA MUSEU BEAUBOURG, PARIS, 1971, PAULO MENDES DA ROCHA

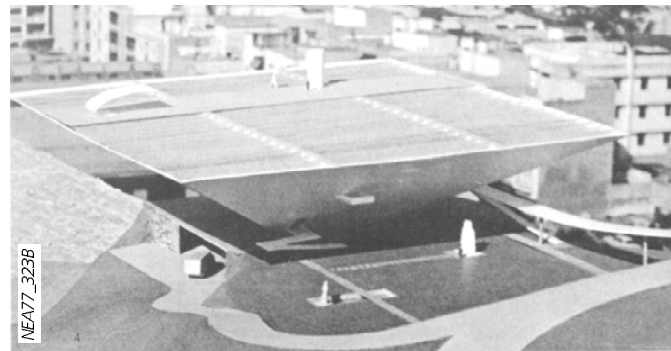


NEA77_42A

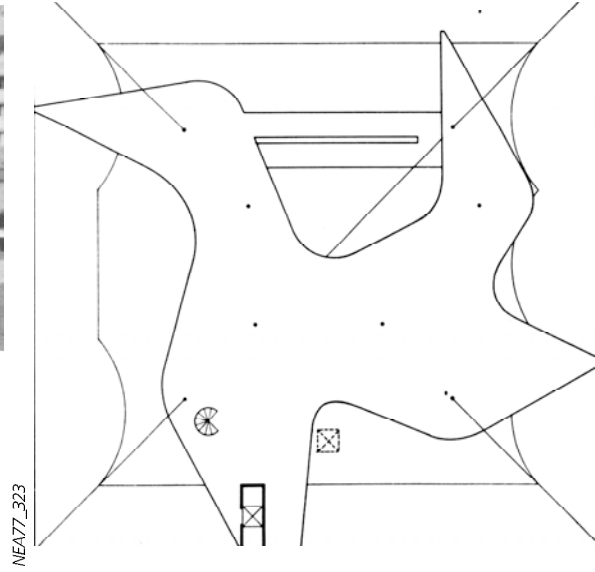
MUSEU DE CARACAS, 1954, OSCAR NIEMEYER,



NEA77_322



NEA77_323B



NEA77_323