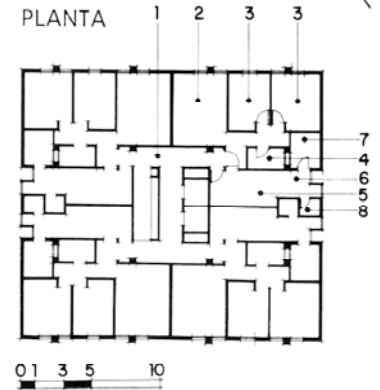
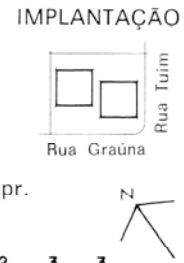


EDIFÍCIOS GEMINI I e II, 1968, EDUARDO DE ALMEIDA

- 1. Hall
- 2. Sala
- 3. Quarto
- 4. Banho
- 5. Cozinha
- 6. Serviço
- 7. Quarto de empr.
- 8. WC de empr.



AMP83_98PL

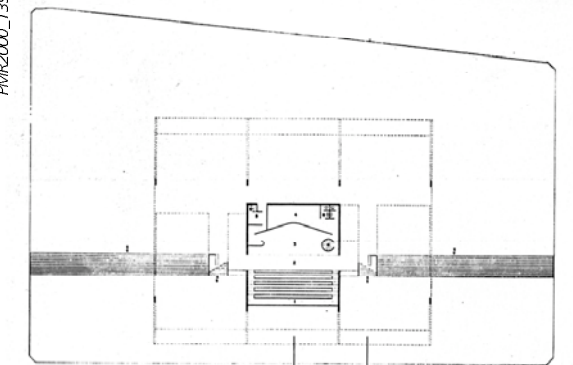
AMP83_98

7.4.5 EDIFÍCIOS INSTITUCIONAIS: ACERCA DA MONUMENTALIDADE

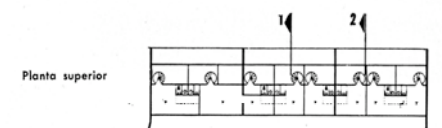
FÓRUM DE AVARÉ, 1962, PAULO MENDES DA ROCHA E JOÃO DE GENNARO



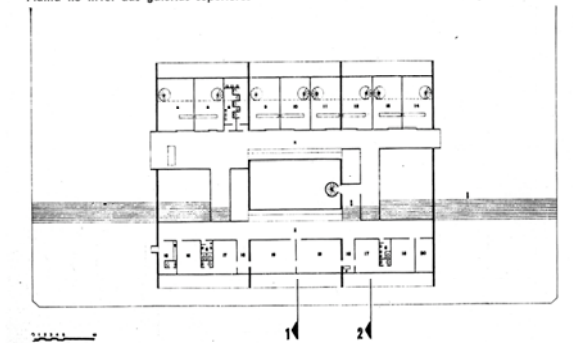
PMR2000_139A



Planta no nível da Praça; Salão do Júri



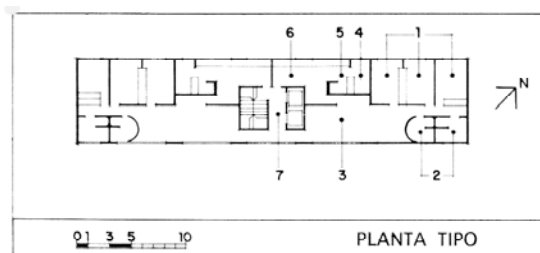
Planta no nível das galerias superiores



AC67108_26

EDIFÍCIO MODULAR BETA, 1970, ABRAHÃO SANOVICZ

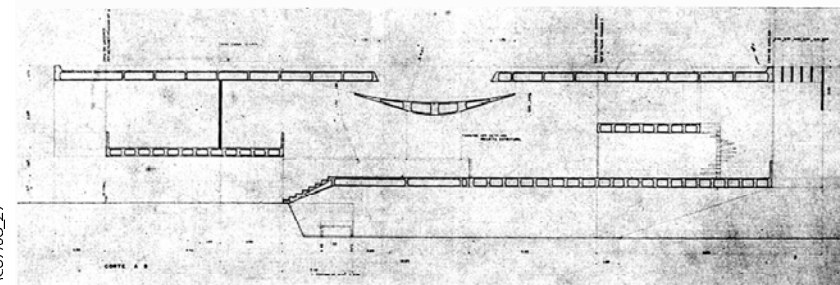
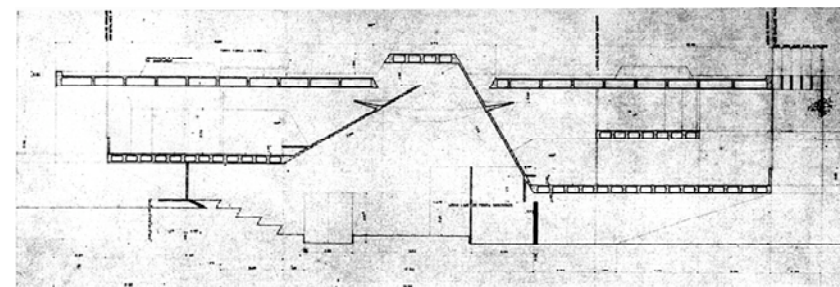
- 1. Quarto
- 2. Banho
- 3. Sala
- 4. Q. empregada
- 5. Lavanderia
- 6. Cozinha
- 7. Hall



AMP83_123PL

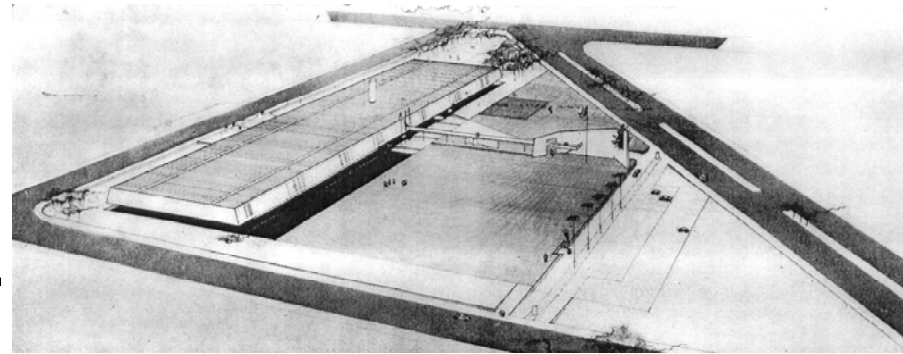


AMP83_123

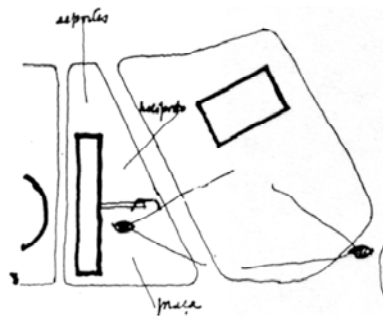


AC67108_27

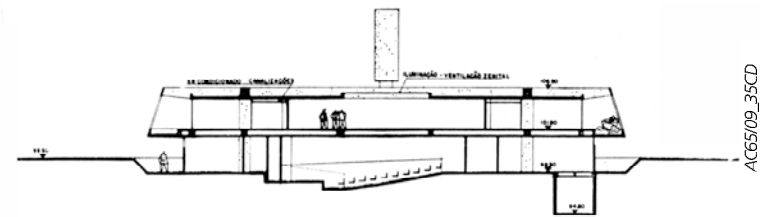
QUARTÉIS GENERAIS DO II EXÉRCITO, 1965, PAULO DE MELLO BASTOS LÉO BONFIM JR. E OSCAR ARIZZA



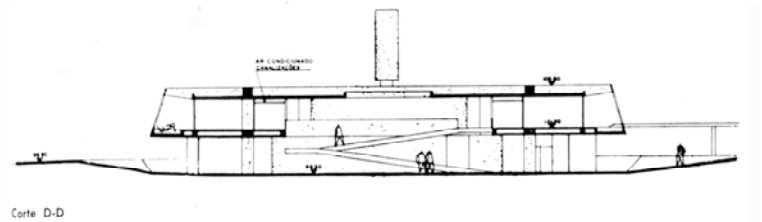
AC65/09_34



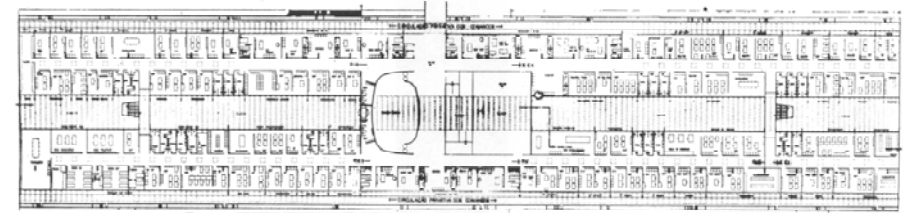
AC65/09_35A



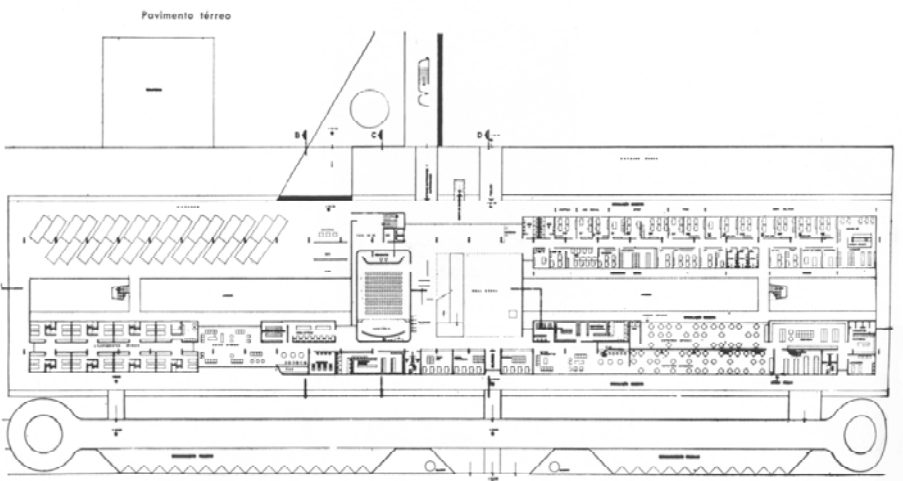
AC65/09_35CD



Corte D-D



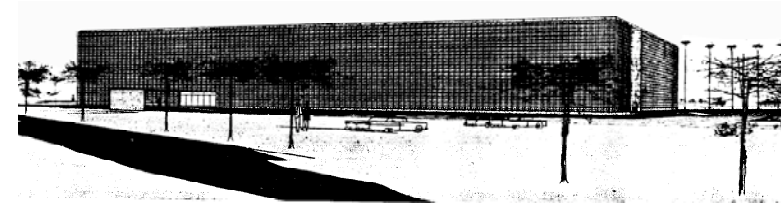
Pavimento superior



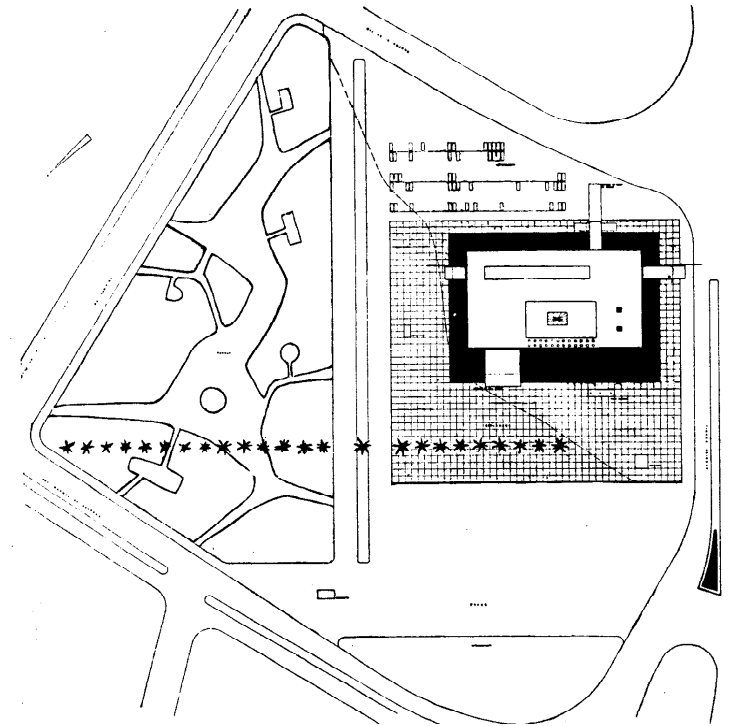
Pavimento térreo

AC65/09_36BC

ASSEMBLÉIA LEGISLATIVA DE SÃO PAULO, ADOLPHO RUBIO MORALES, RICARDO SIEVERS, RUBENS CARNEIRO VIANA

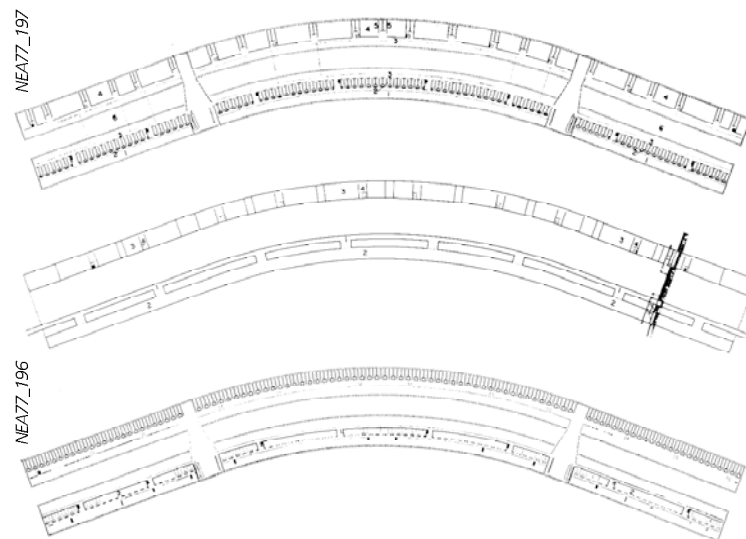


AC67/08305B



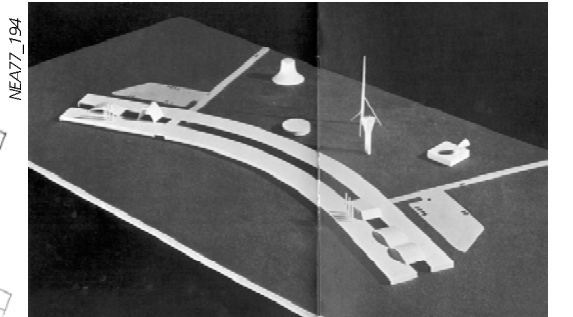
AC67/08305

INSTITUTO CENTRAL DE CIÊNCIAS DA UNIVERSIDADE DE BRASÍLIA, 1960, OSCAR NIEMEYER

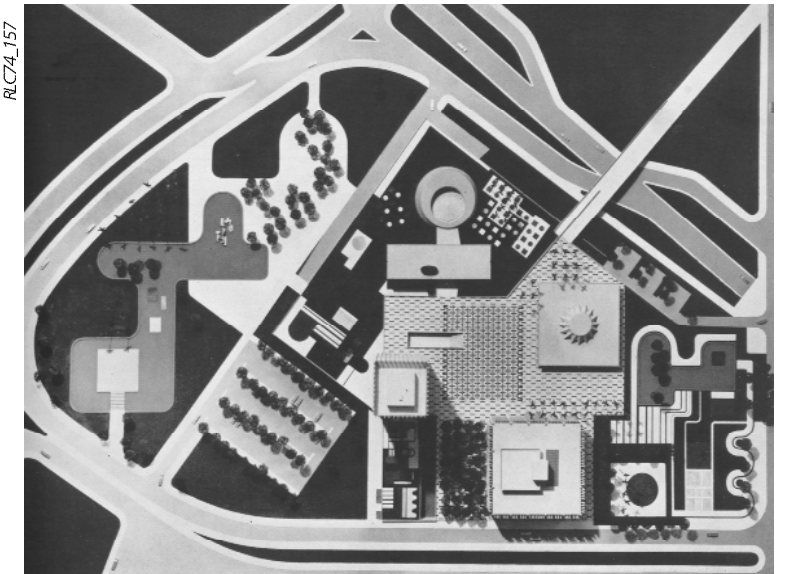
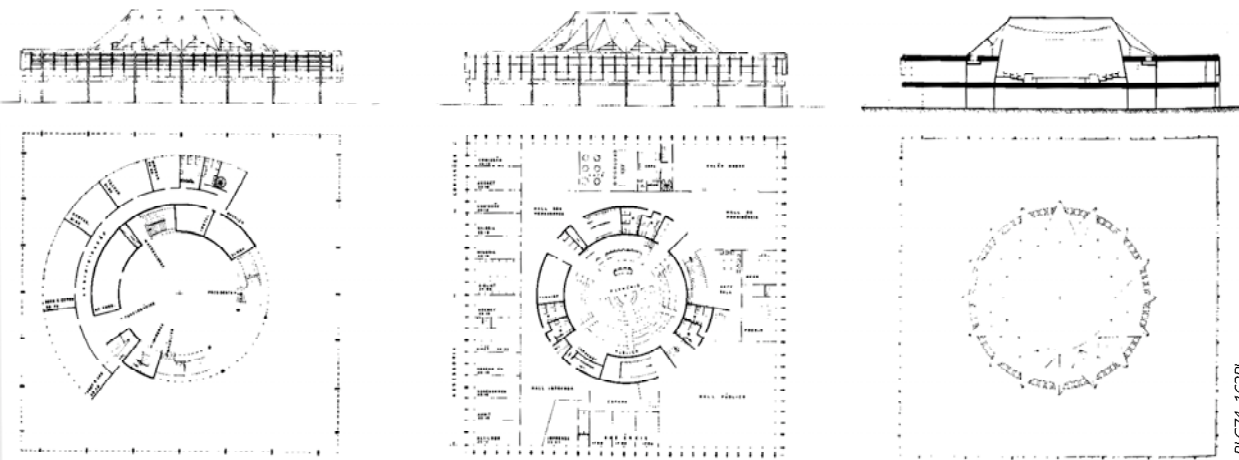
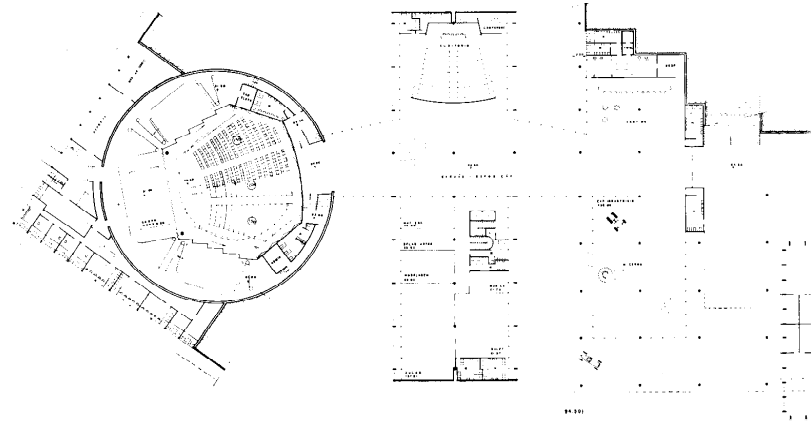
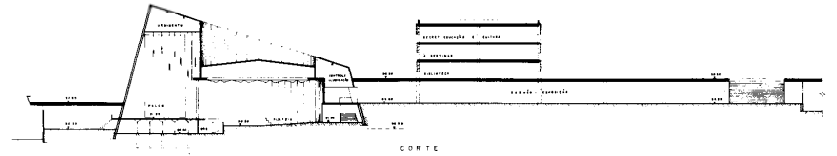


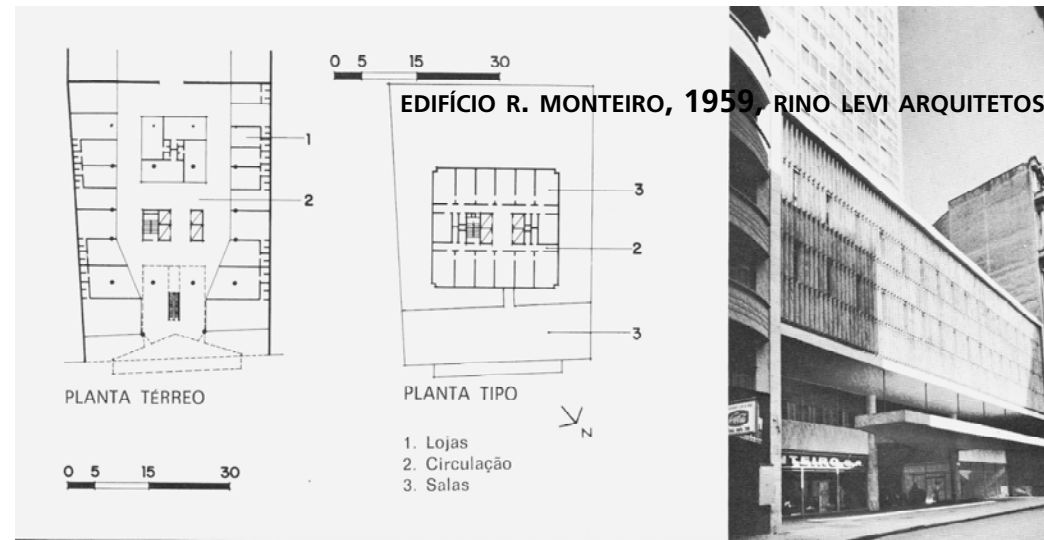
NEA77_197

NEA77_196



NEA77_194



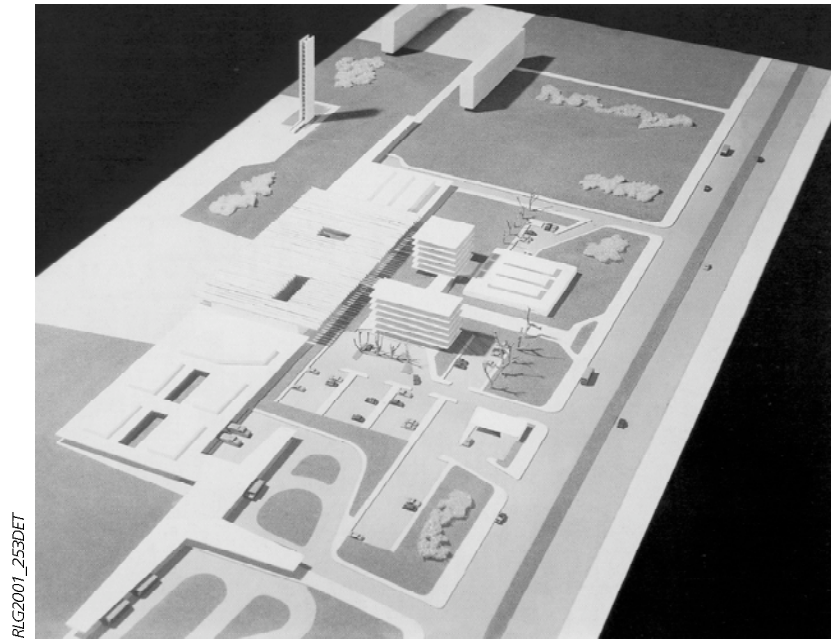


EDIFÍCIO SUL AMERICANO, AVENIDA PAULISTA, 1960, RINO LEVI ARQUITETOS



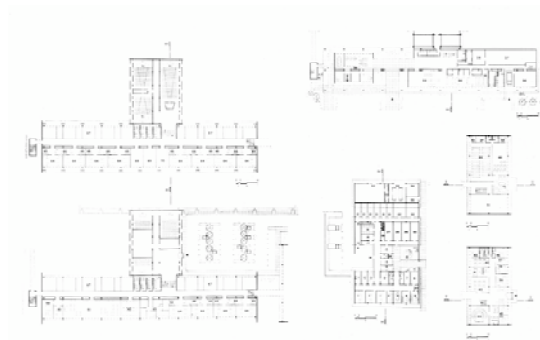
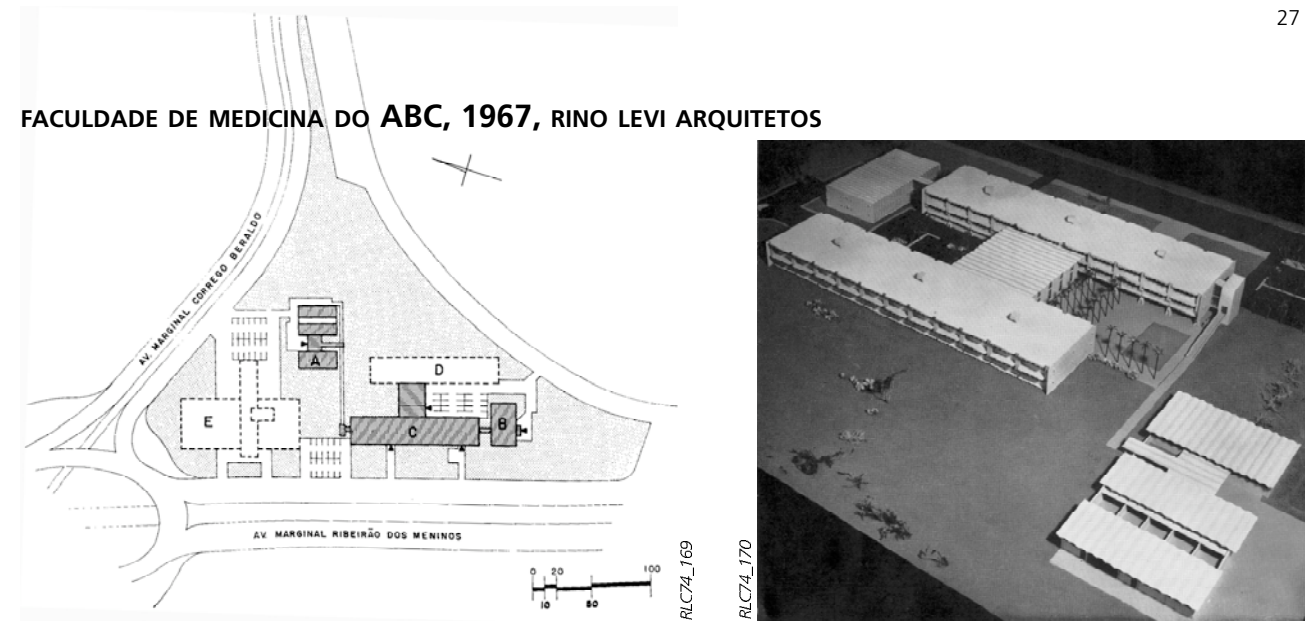
RLG2001_170

CENTRO SOCIAL DA CIDADE UNIVERSITÁRIA DA USP, 1962, RINO LEVI ARQUITETOS



RLG2001_253DET

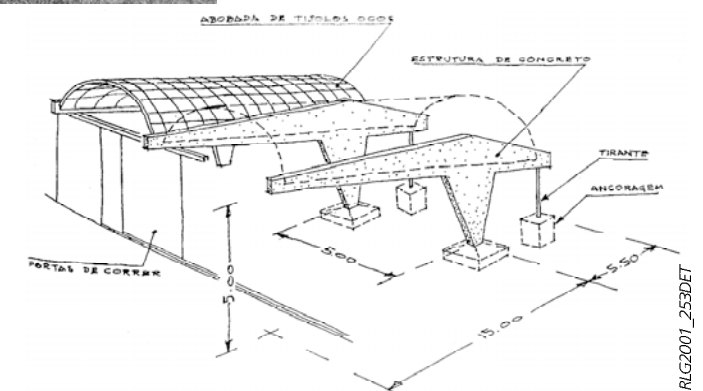
FACULDADE DE MEDICINA DO ABC, 1967, RINO LEVI ARQUITETOS



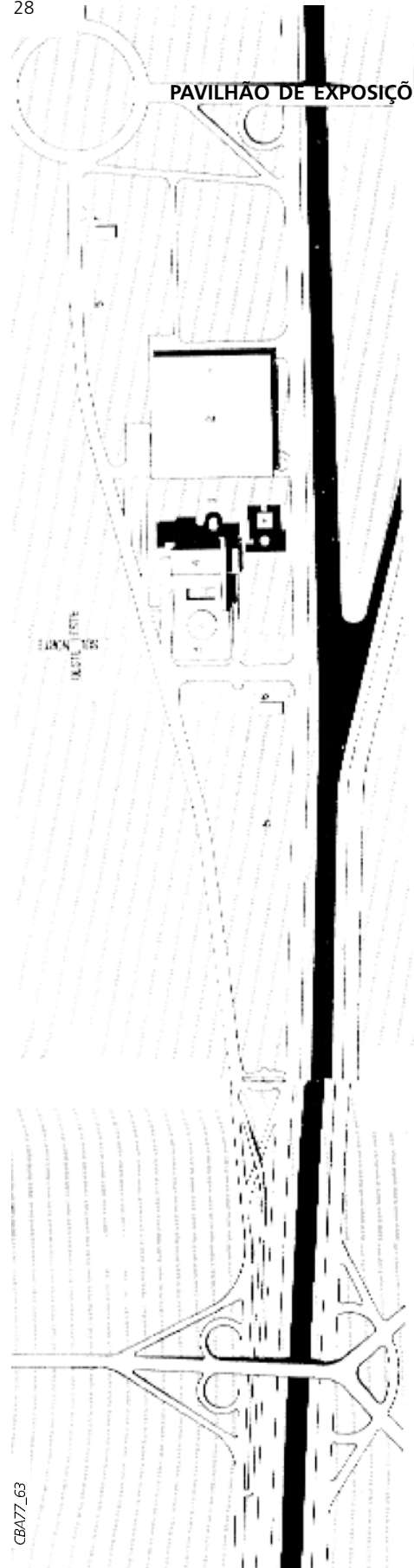
HANGAR DA TECELAGEM PARAÍBA S.A., 1965, RINO LEVI ARQUITETOS



RLG2001_252A



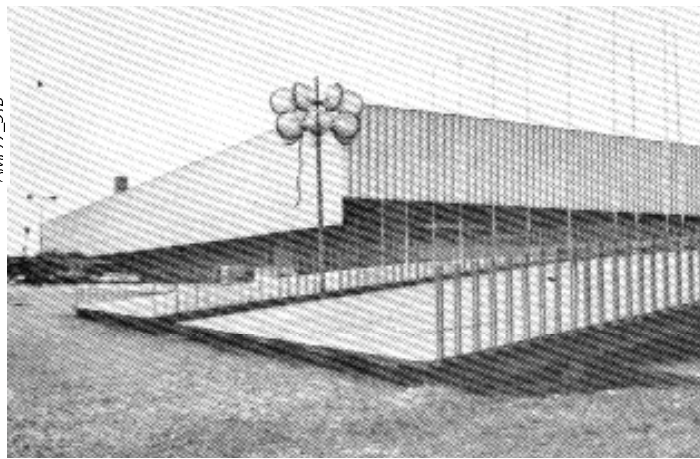
PAVILHÃO DE EXPOSIÇÕES NO PARQUE ANHEMBI, 1967, MIGUEL JULIANO E JORGE WILHEIM



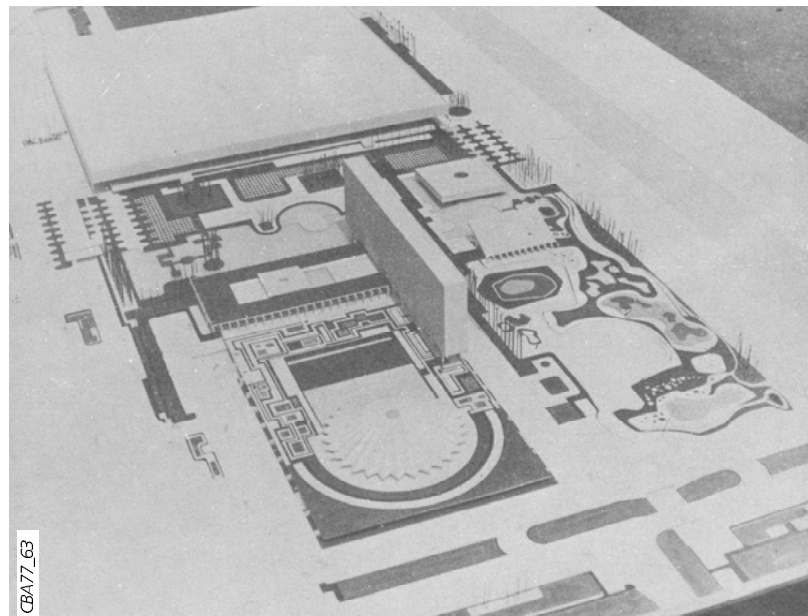
CB77_63



AMP77_91A



AMP77_91B

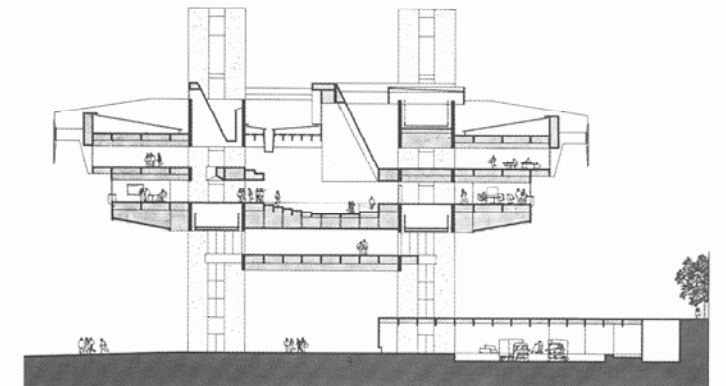


CB77_63

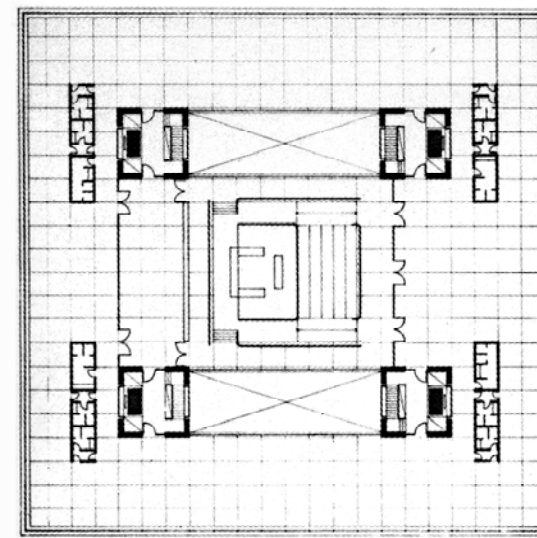
TRIBUNAL DE CONTAS DE SÃO PAULO, 1971, PLÍNIO CROCE, ROBERTO AFLALO E GIANCARLO GASPERINI



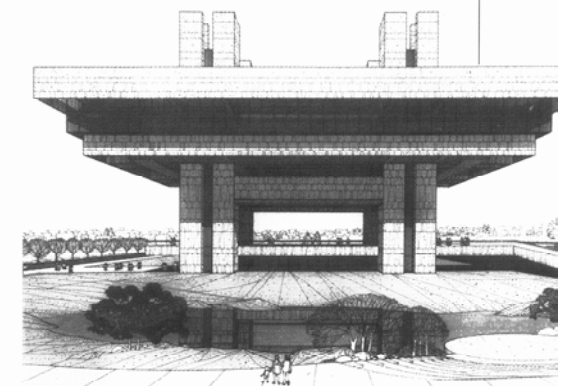
CB199_26



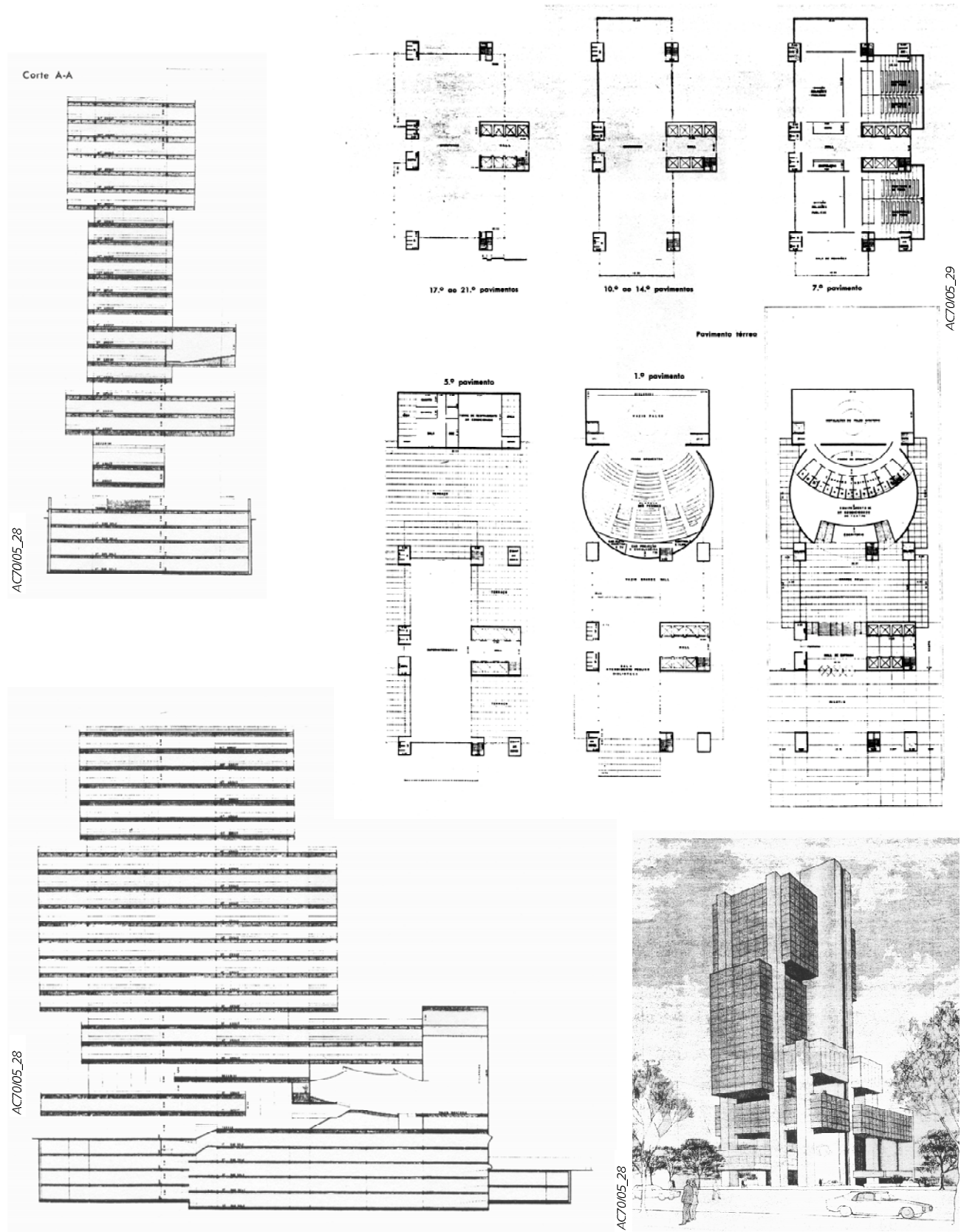
CB199_27



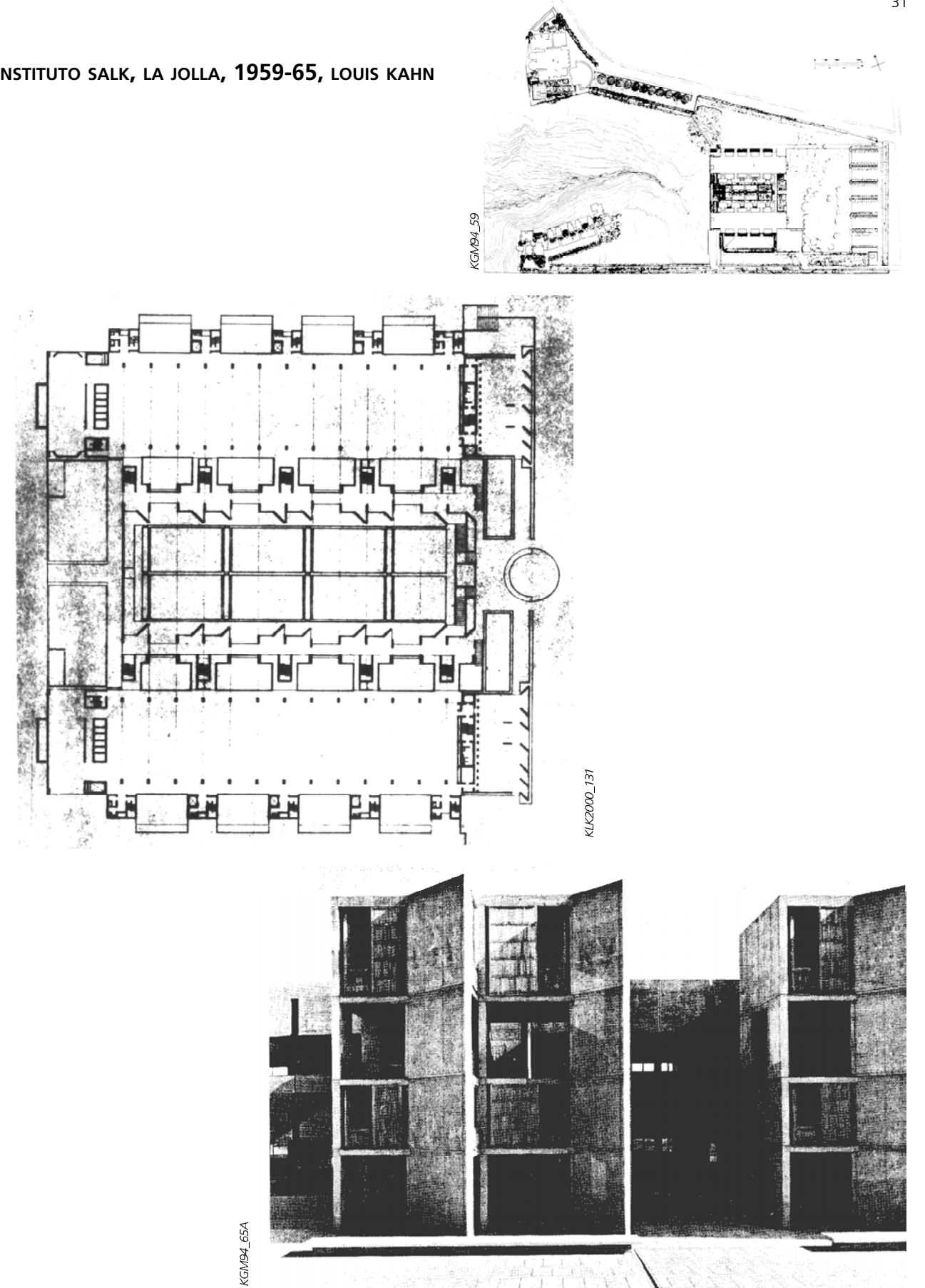
CB199_26B



CONCURSO DO EDIFÍCIO SEDE SESI-CIESP, 1968, CROCE, AFLALO E GASPERINI



INSTITUTO SALK, LA JOLLA, 1959-65, LOUIS KAHN



YAMANASHI PRESS & RADIO CENTER, KOFU, 1961-7, KENZO TANGE



SHIZUOKA PRESS & BROADCASTING CENTER, TOQUIO, 1965-70, KENZO TANGE



BIBLIOTECA PÚBLICA DE BUENOS AIRES, 1962, CLORINDO TESTA E FRANCISCO BULLRICH

