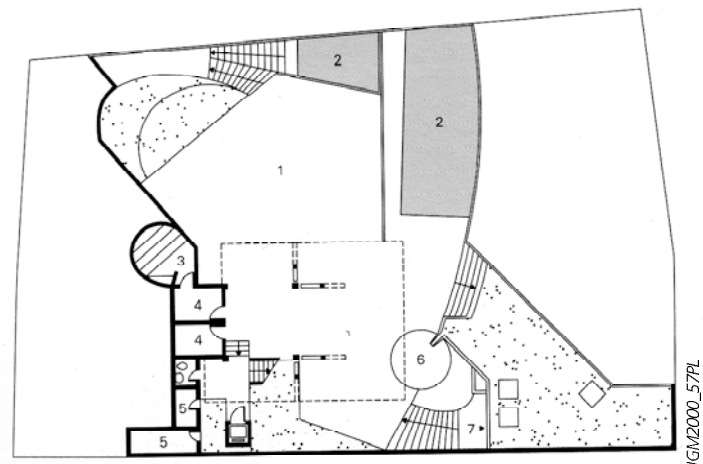
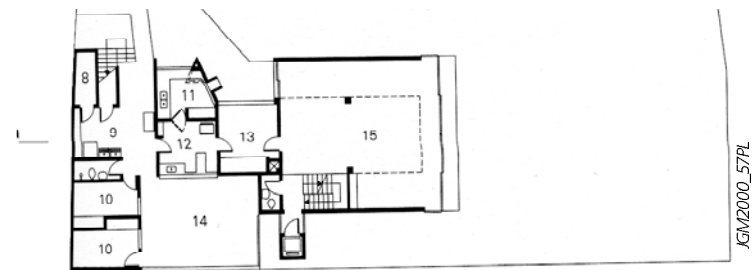
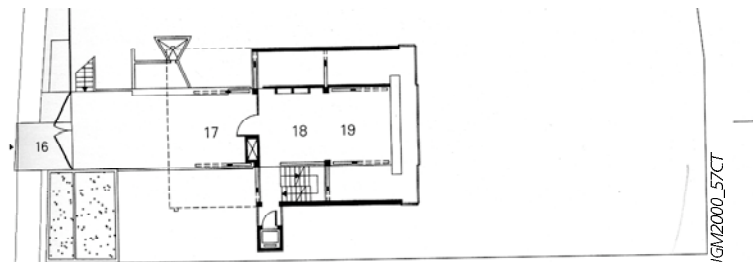
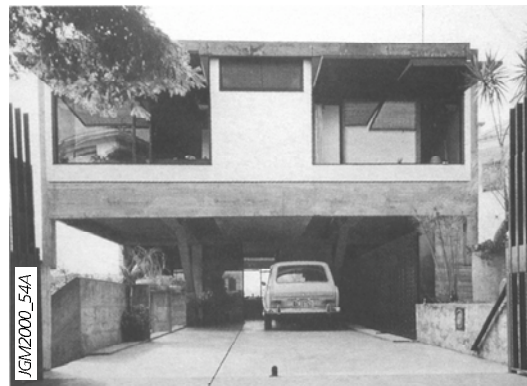


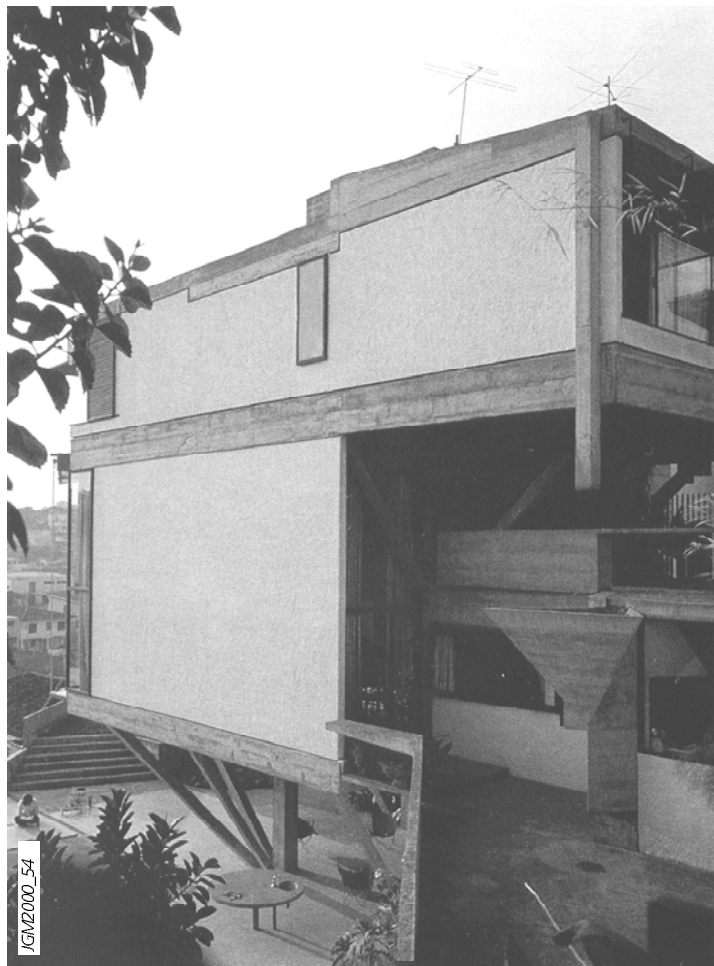
### 7.3.6. MANEIRA DE PENSAR A ARQUITETURA EM CONCRETO

#### CASA CUNHA LIMA, 1958, JOAQUIM GUEDES





IGM2000\_56B



IGM2000\_54



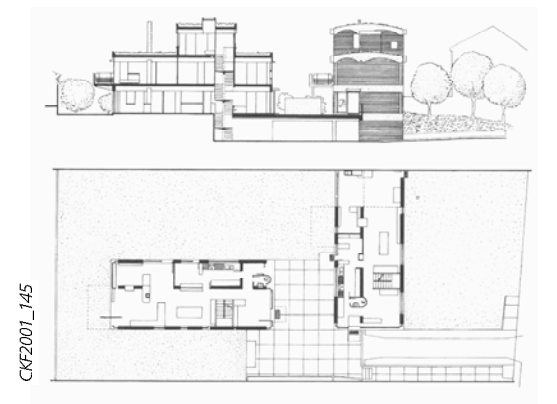
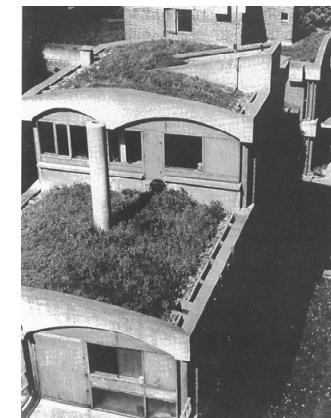
IGM2000\_55

APARTAMENTOS EM HAM COMMON, LONDRES, 1957, STIRLING & GOWAN



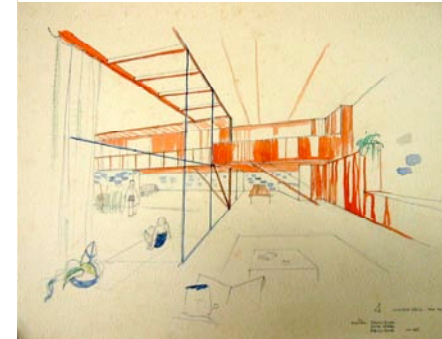
TNB96\_103

CASAS JAOU, NEULLY, PARIS, 1952-4, LE CORBUSIER



CKF2001\_145

CASA DE PRAIA NO GUARUJÁ, 1956, JOAQUIM GUEDES

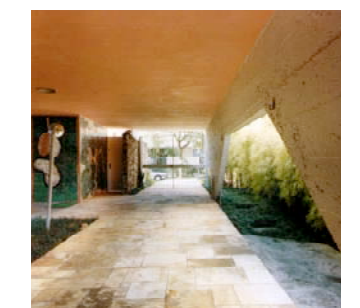


AF65\_GUEDES\_GUARUJA

CASA MARIO TAQUES BITTENCOURT, 1958, VILANOVA ARTIGAS

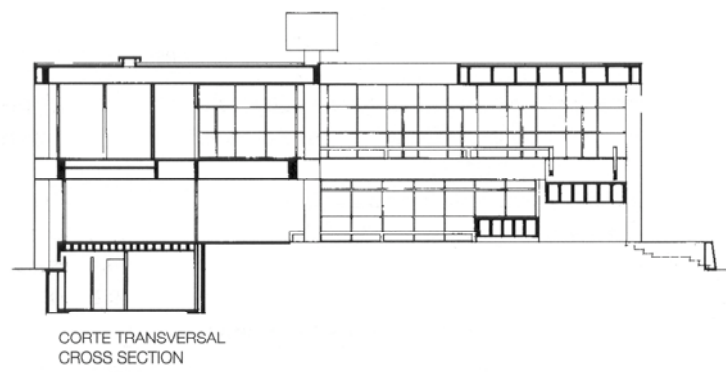


VAC2000\_171F



### 7.3.7 VOLUMES SIMPLES E SOLUÇÕES COMPLEXAS

#### FÓRUM DE PROMISSÃO, 1959, VILANOVA ARTIGAS E CARLOS CASCALDI



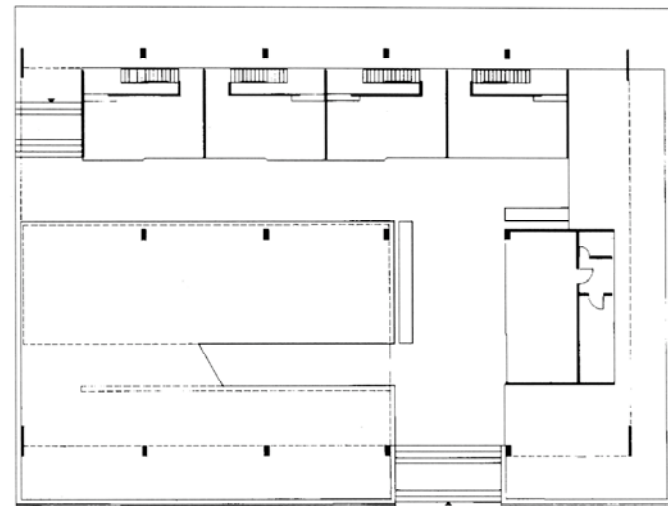
VA97\_P8ACT



VA97\_P84F3

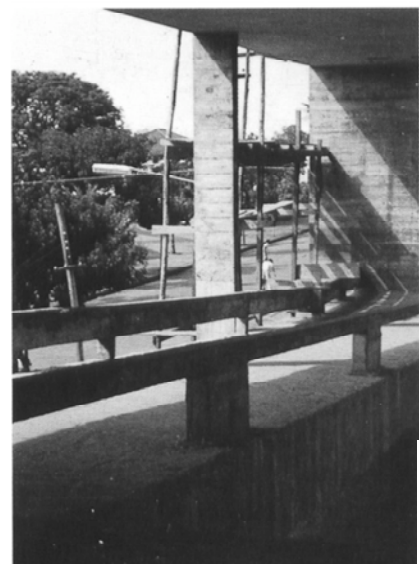


VA97\_P84F1

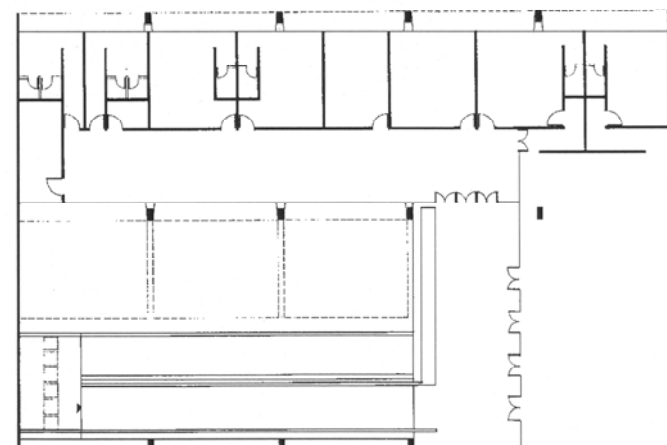


VA97\_P84F1

IMPLANTAÇÃO /TÉRREO: CARTÓRIOS/ REGITRO CIVIL/ JARDIM / RAMPAS  
GROUND LEVEL: OFFICE / REGISTRY OFFICE / GARDEN / RAMPAS



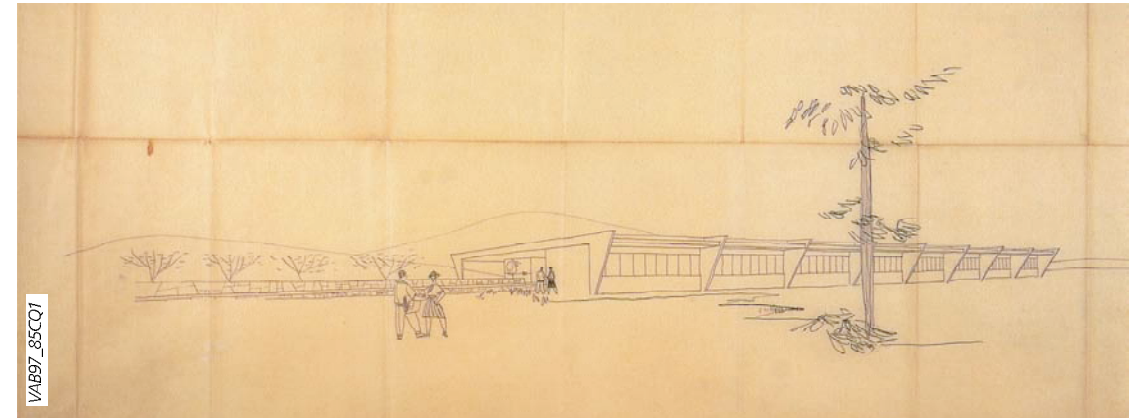
VA97\_P84F1



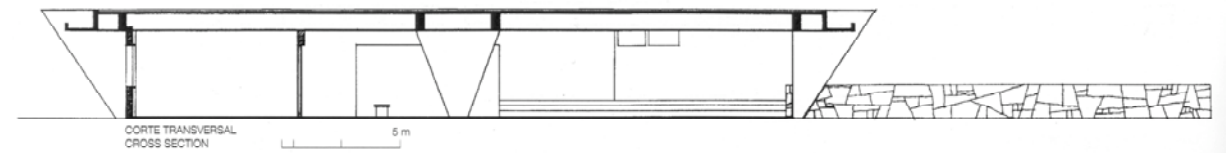
VA97\_P84F3

PAVIMENTO SUPERIOR: TRIBUNAL/JUIZES/PROMOTORIA  
UPPER LEVEL PLAN : JURY / JUSTICE OFFICE / MINORS

#### GINÁSIO DE ITANHAÉM, 1959, VILANOVA ARTIGAS E CARLOS CASCALDI



VA897\_85CQ1



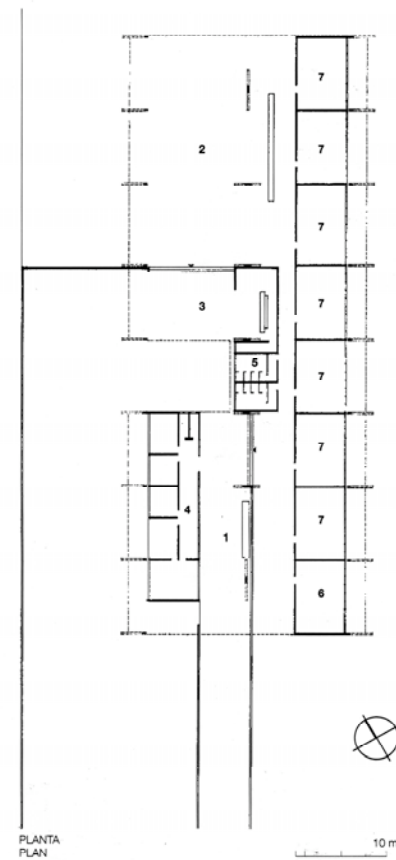
VA897\_85CT



VA897\_86A



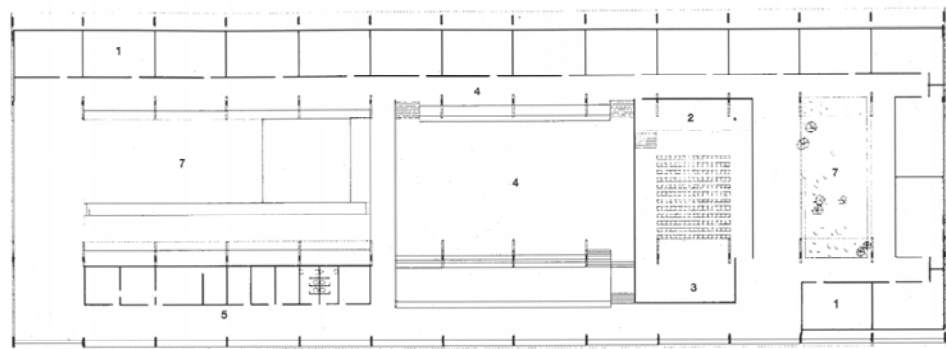
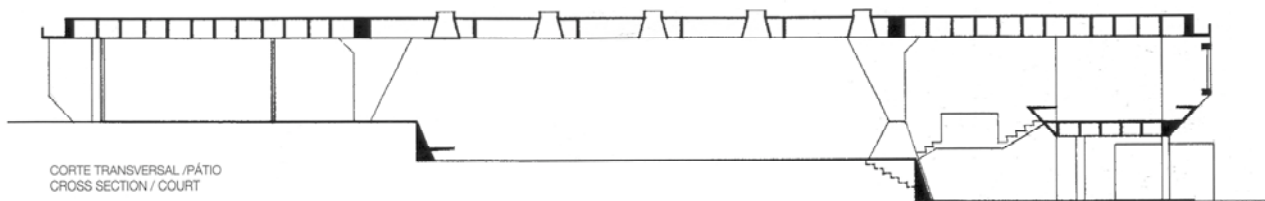
VA897\_90C



VA897\_856PL

- |                           |                                |
|---------------------------|--------------------------------|
| 1. Vestibulo              | 1. Hall                        |
| 2. Pátio                  | 2. Stage                       |
| 3. Cantina                | 3. Canteen                     |
| 4. Secretaria / Diretoria | 4. Secretary / Director office |
| 5. Sanitário              | 5. Public toilets              |
| 6. Biblioteca             | 6. Library                     |
| 7. Sala de aula           | 7. Classroom                   |

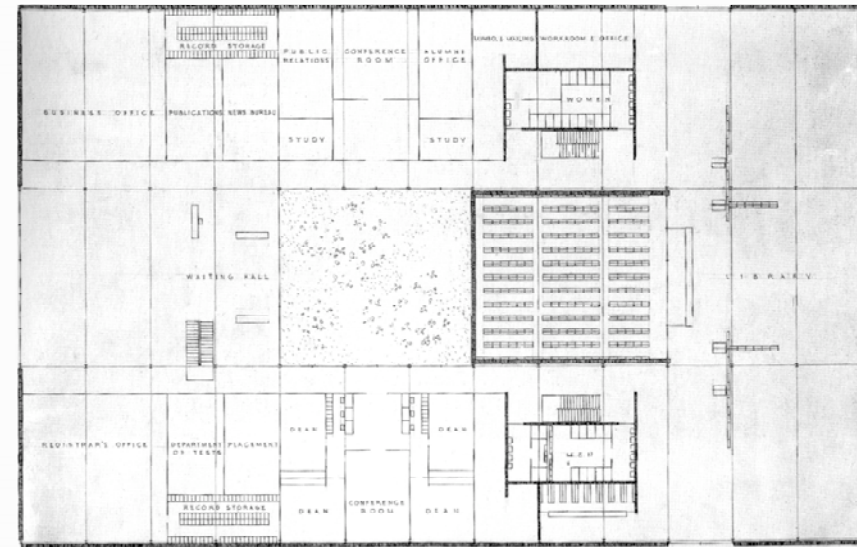
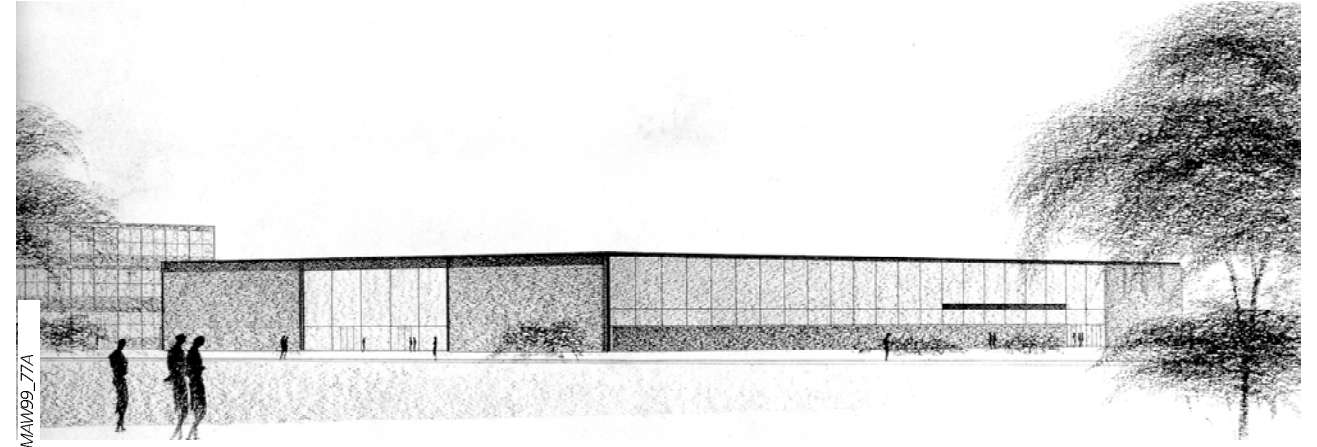
### GINÁSIO DE GUARULHOS, 1960, VILANOVA ARTIGAS E CARLOS CASCALDI



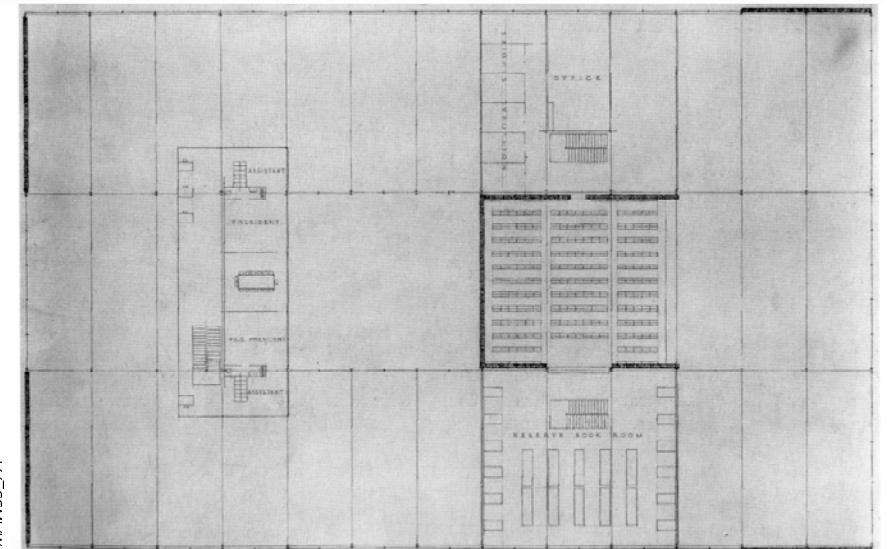
- 1. Sala de aula                    1. Classroom
- 2. Auditório                    2. Auditorium
- 3. Biblioteca                    3. Library
- 4. Pátio central                4. Court
- 5. Secretaria / Diretoria      5. Secretary / Director
- 6. Cantina / Acesso            6. Canteen / Entrance
- 7. Jardim                        7. Garden

VAB97\_89FL

### BIBLIOTECA DO IIT, CHICAGO, 1944, MIES VAN DER ROHE



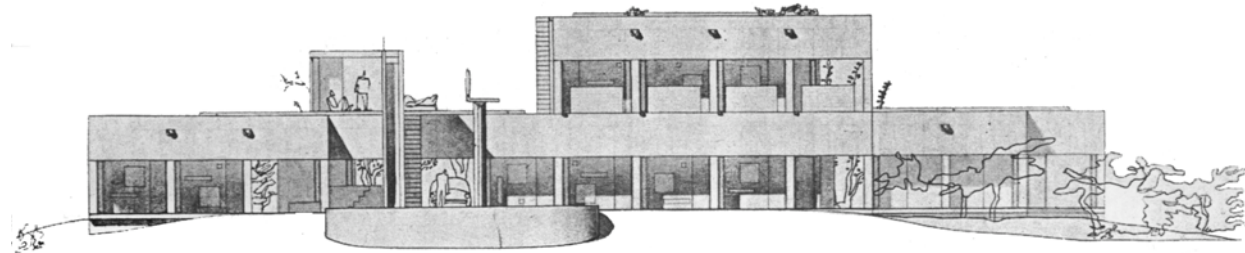
MAW99\_77E



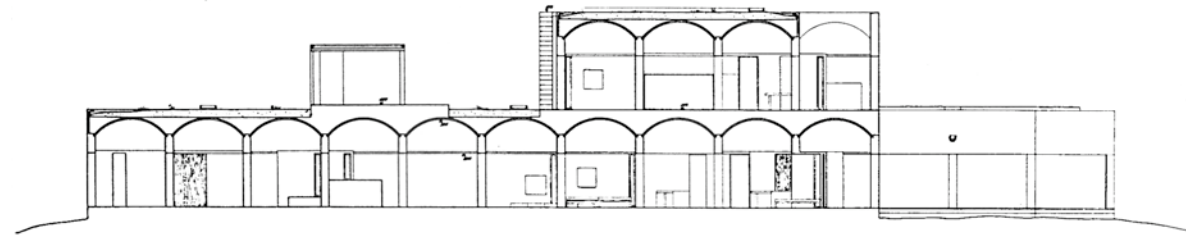
MAW99\_77F

### 7.3.8 REFINAMENTO ARQUITETÔNICO E AUSÊNCIA DE RETÓRICA

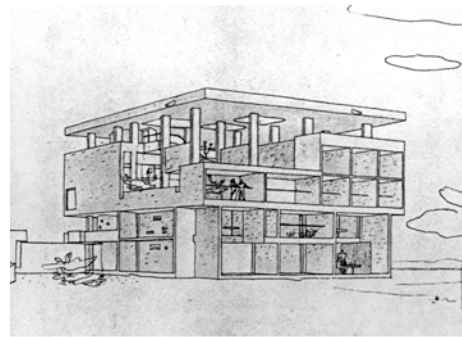
#### CASAS INDIANAS, LE CORBUSIER



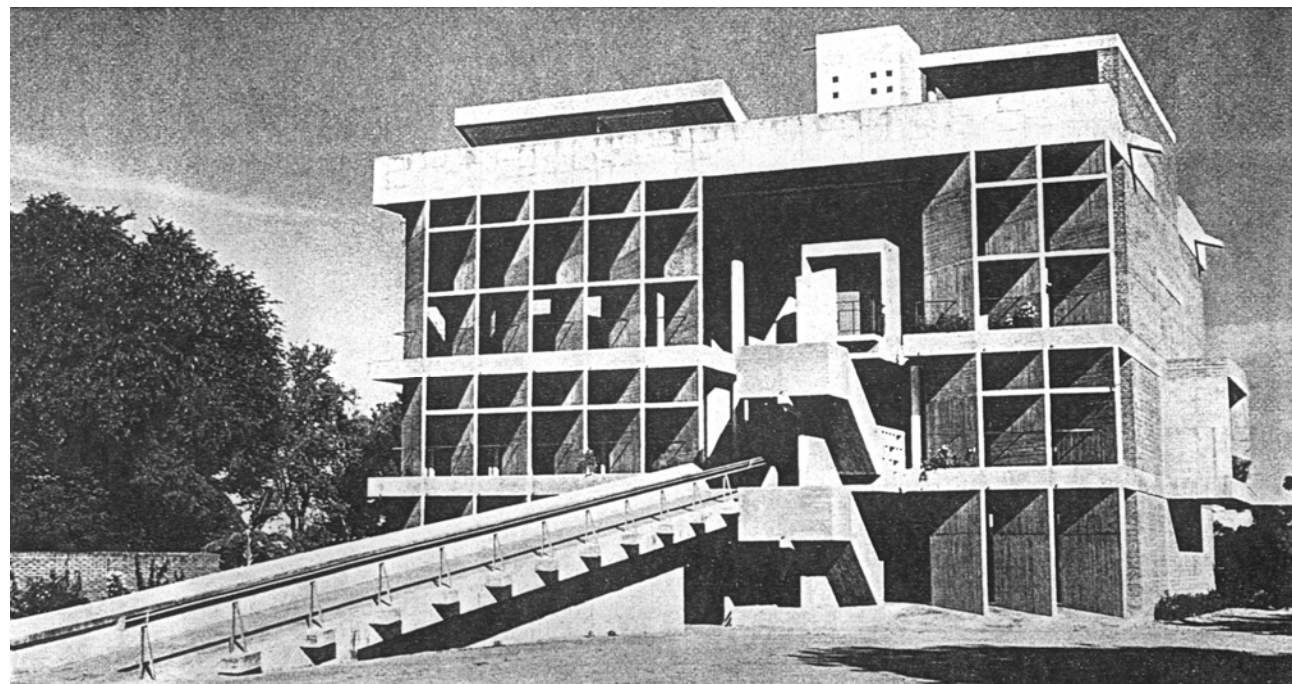
Élévation de la façade sud



Coupe longitudinale



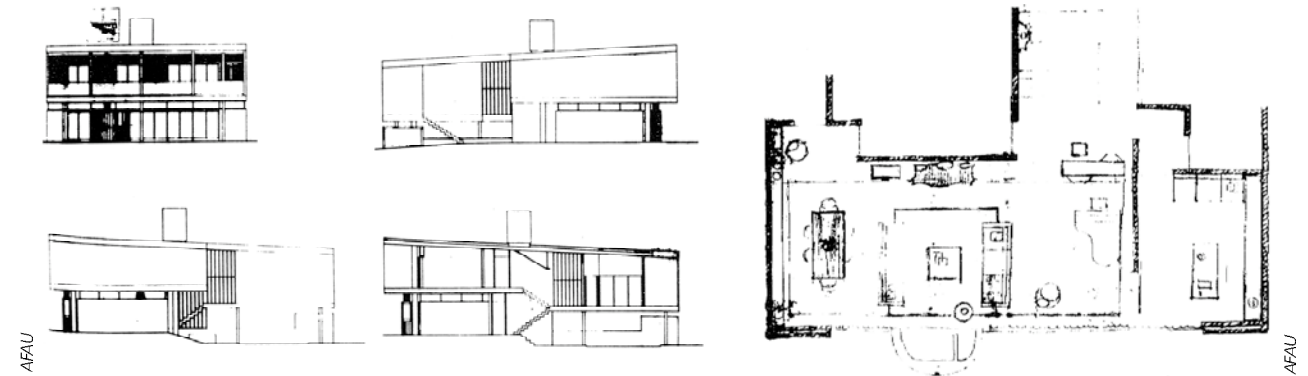
Villa Shodhan



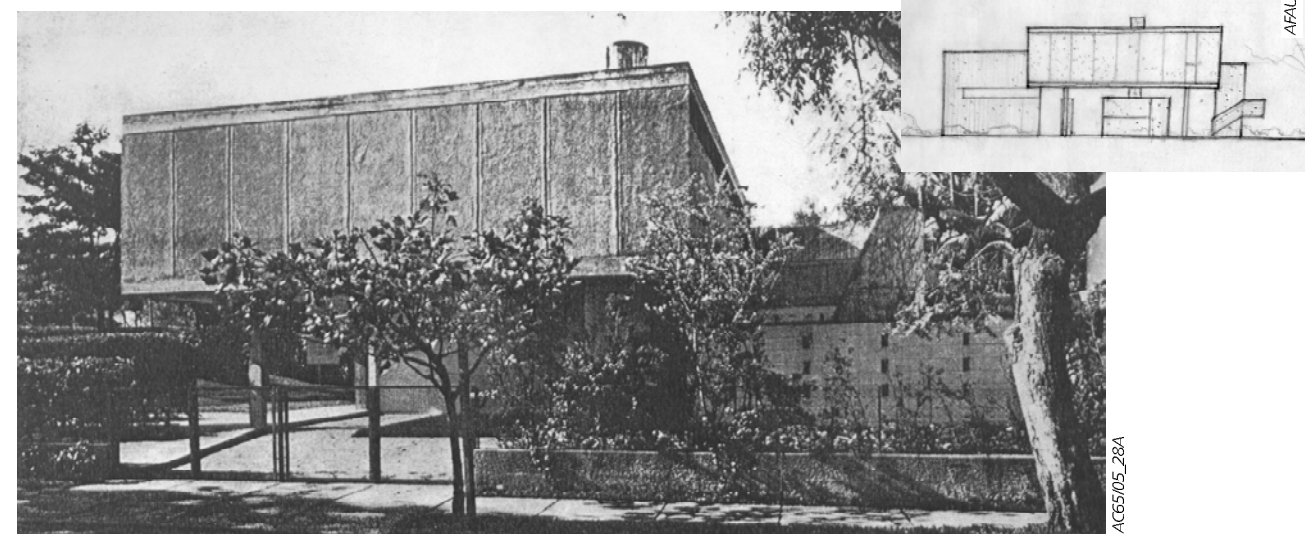
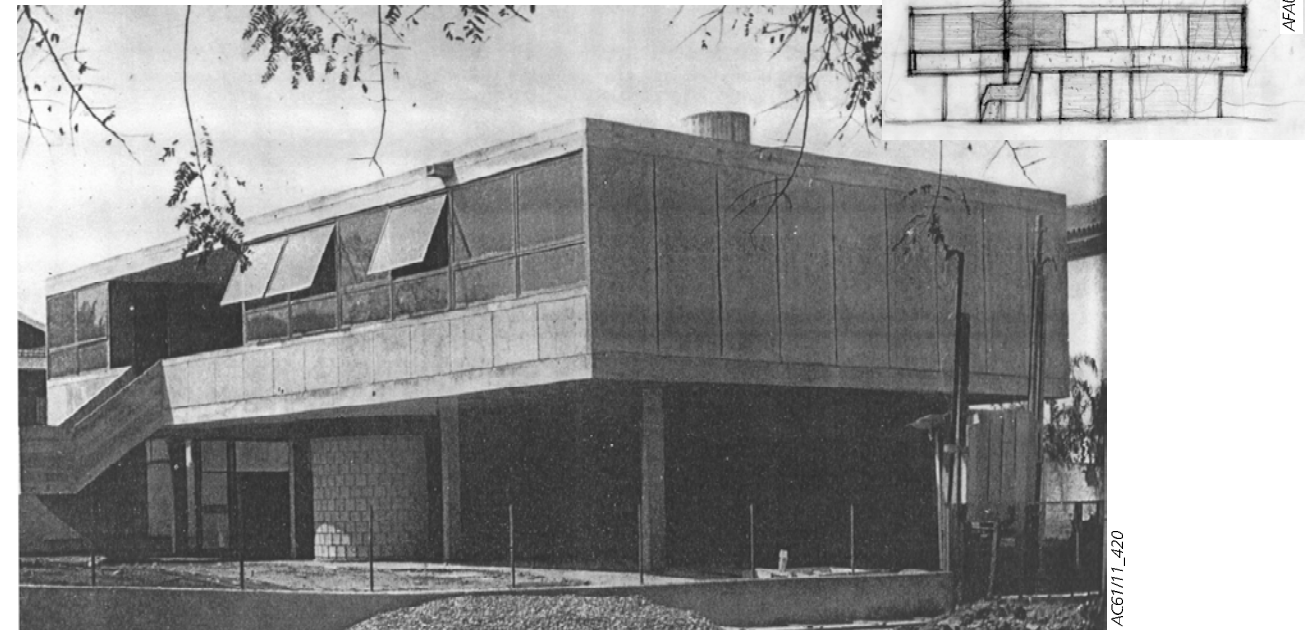
La façade ouest avec son brise-soleil. Une longue rampe d'accès pour piétons relie le niveau de la direction au premier arrêt des automobiles

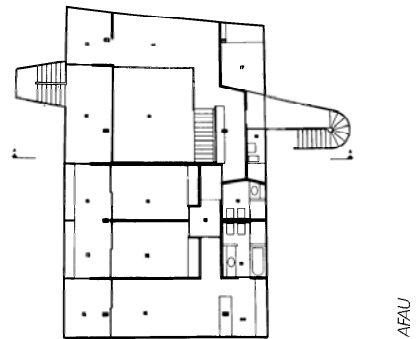
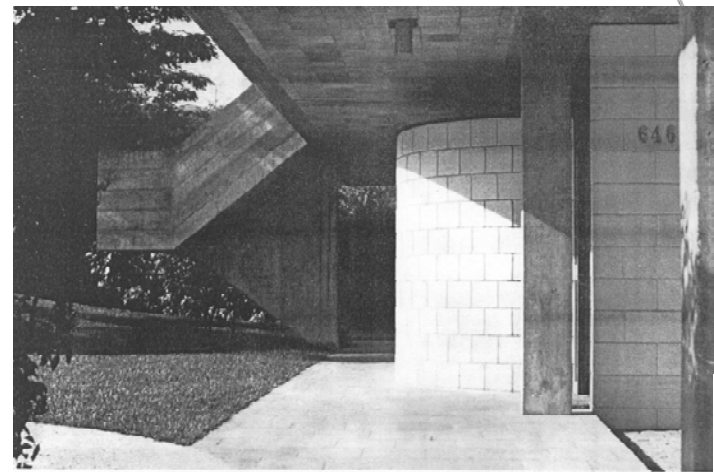
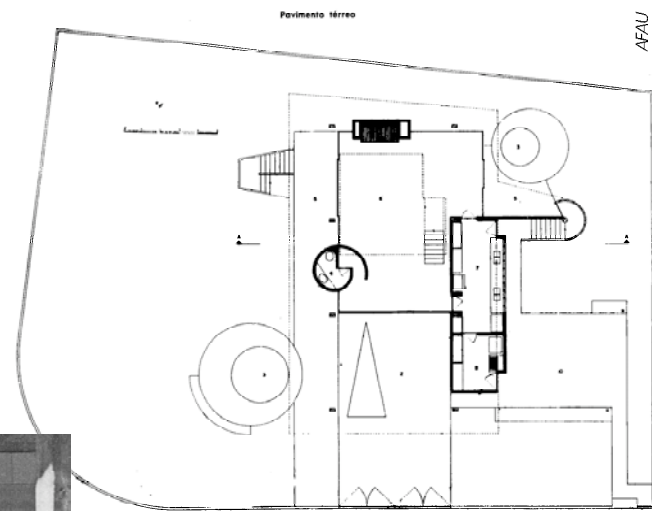
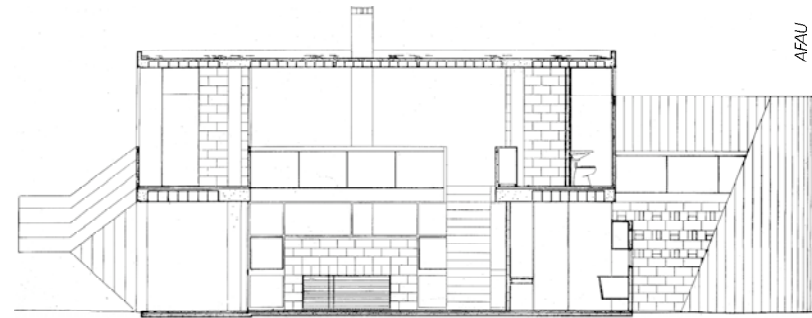
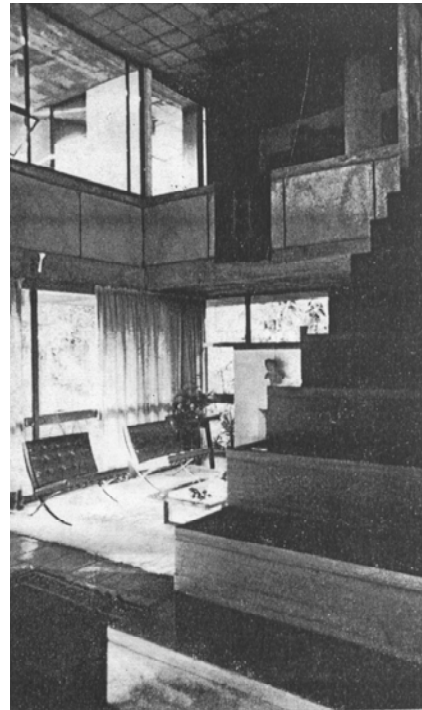
Millowners' Association Building

#### CASA AÉCIO AROUCHE DE TOLEDO, 1960, CARLOS MILLAN

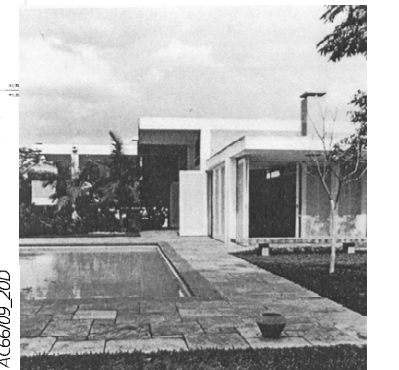
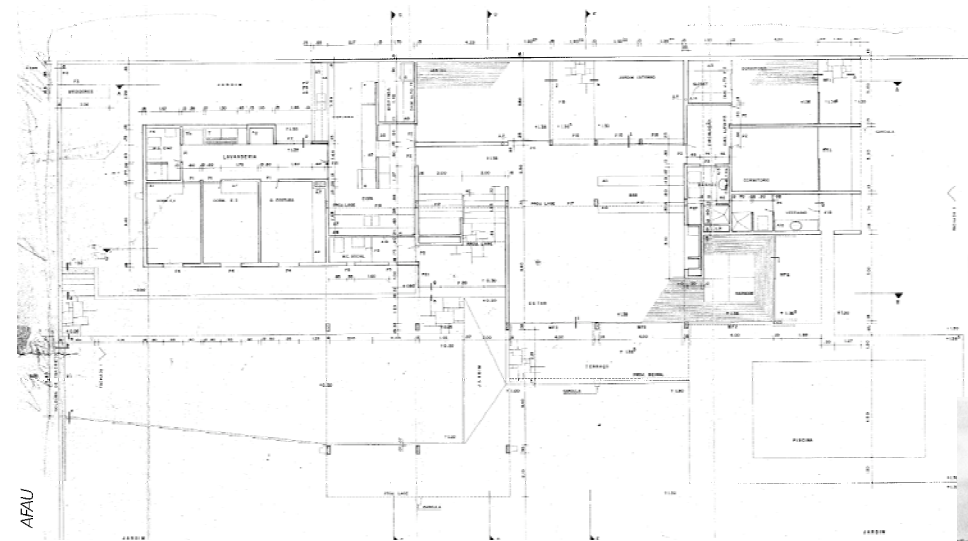
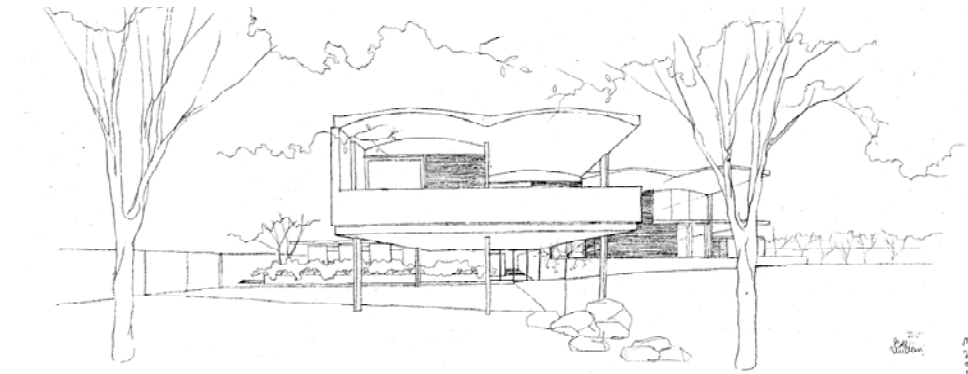
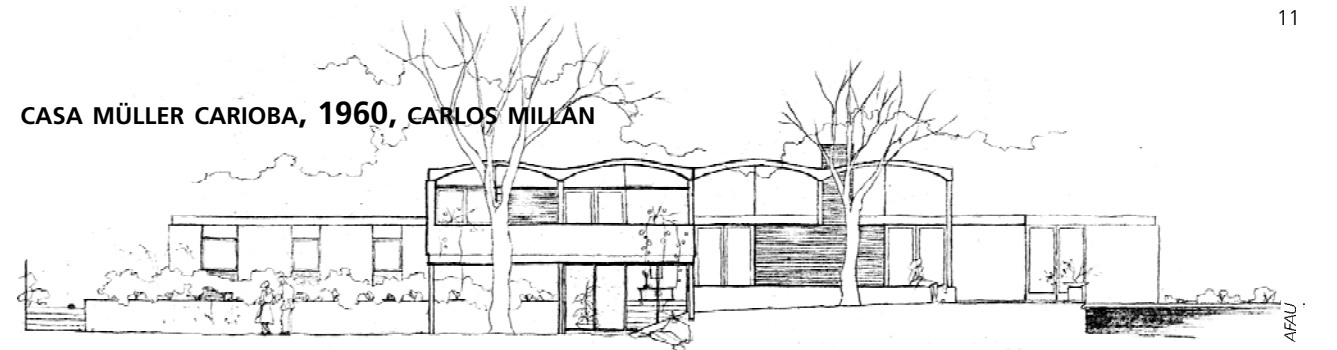


#### CASA ROBERTO MILLAN, 1960, CARLOS MILLAN





CASA MÜLLER CARIOBA, 1960, CARLOS MILLAN



CASA DALTON TOLEDO, PIRACICABA, 1962, JOAQUIM GUEDES

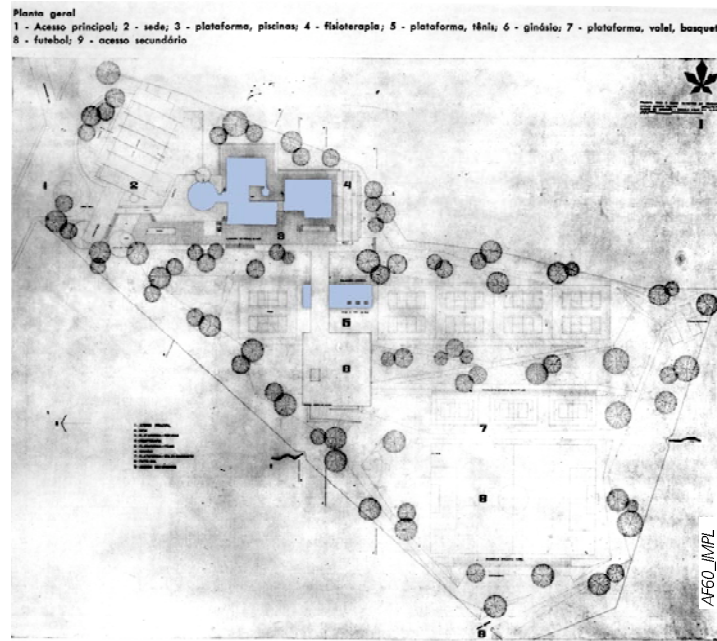


IGM2000\_64

CLUBE PAINEIRAS, 1960, CARLOS MILLAN



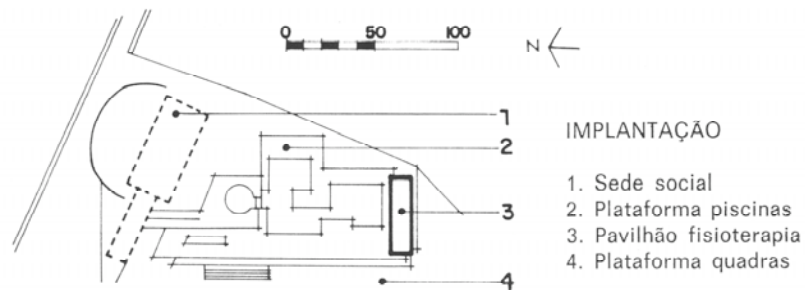
AC66/09\_26A



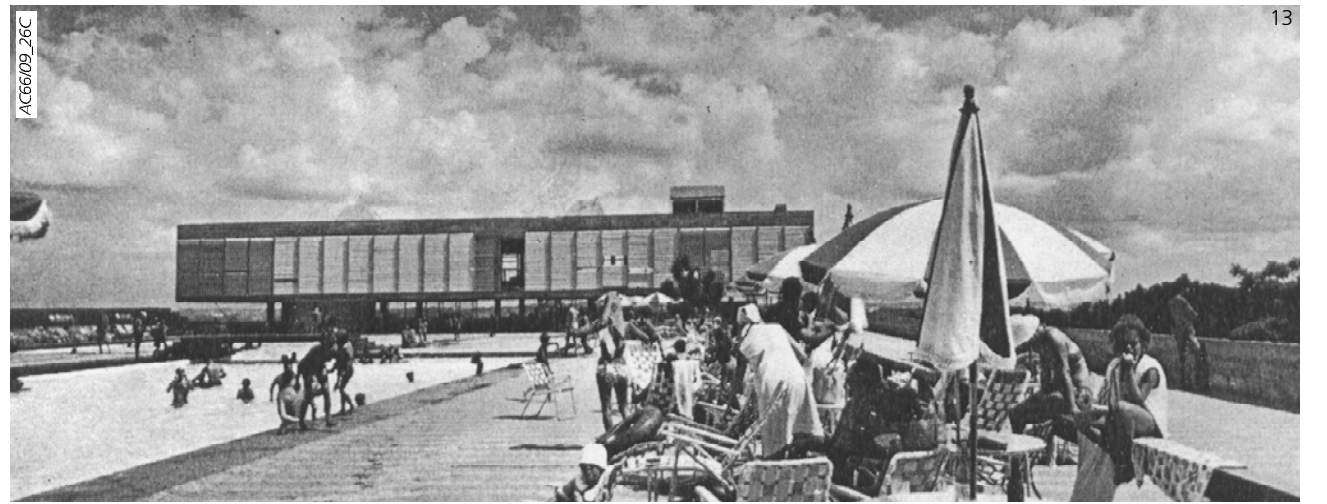
AF60\_IMPL



AC66/09\_26B



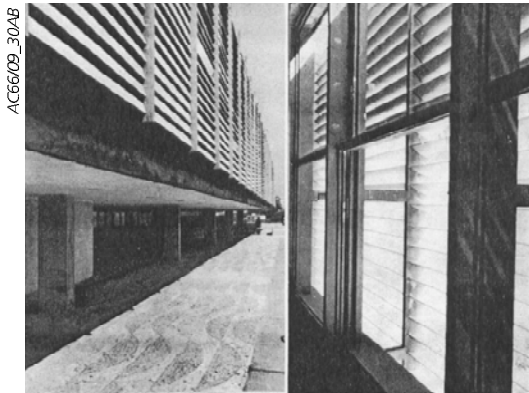
AMR83\_57PL



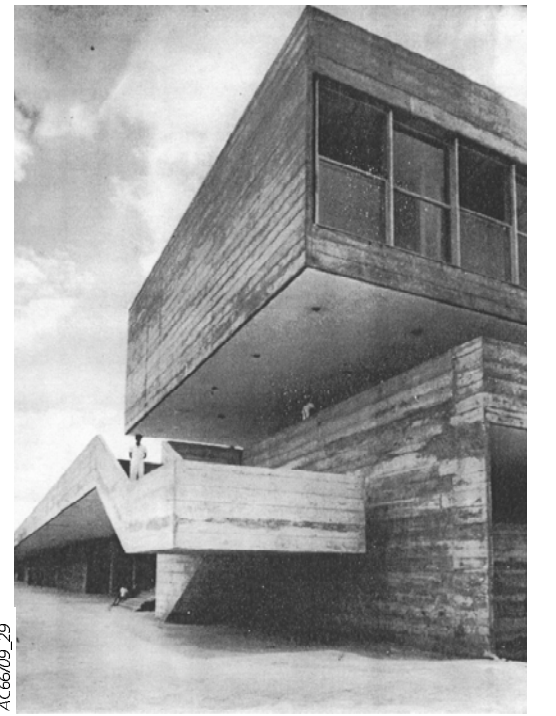
AC66/09\_26C



AC66/09\_28



AC66/09\_30AB



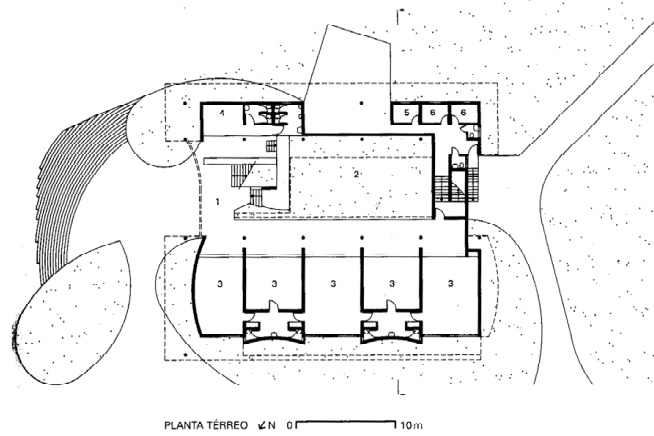
AC66/09\_29



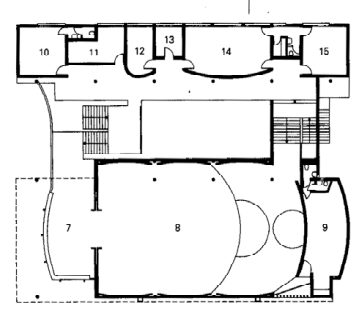
AC66/09\_27

### 7.3.9 ASSIMILANDO OUTRAS REFERÊNCIAS EM GEOMETRIAS COMPLEXAS

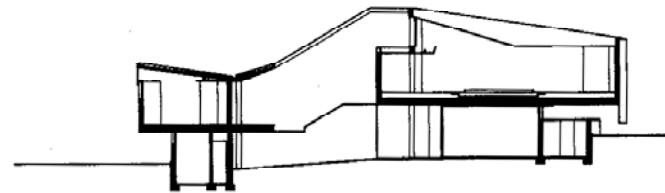
#### FÓRUM DE ITAPIRA, 1960, JOAQUIM GUEDES



PLANTA TÉRREO



PLANTA PAVIMENTO SUPERIOR



CORTE TRANSVERSAL



LGM2000\_59

LGM2000\_61

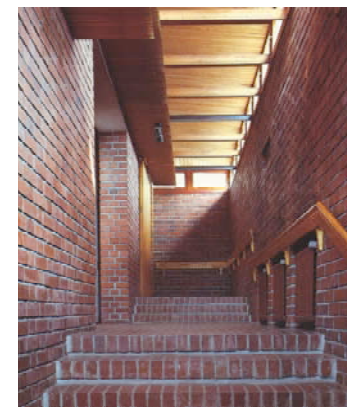
#### CENTRO CÍVICO DE SÄYNÄTSALO, FINLÂNDIA, 1952, ALVAR AALTO



AUA83\_57B



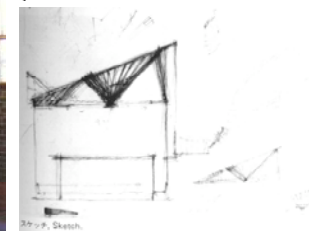
AUA83\_57C



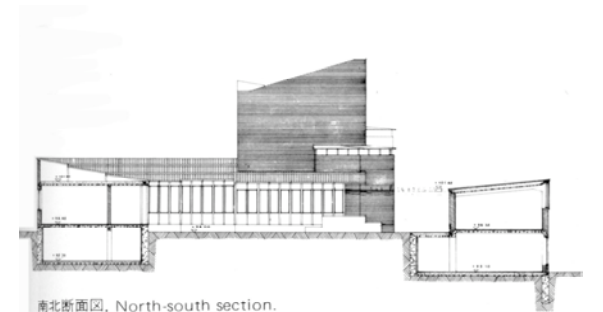
AUA83\_58B



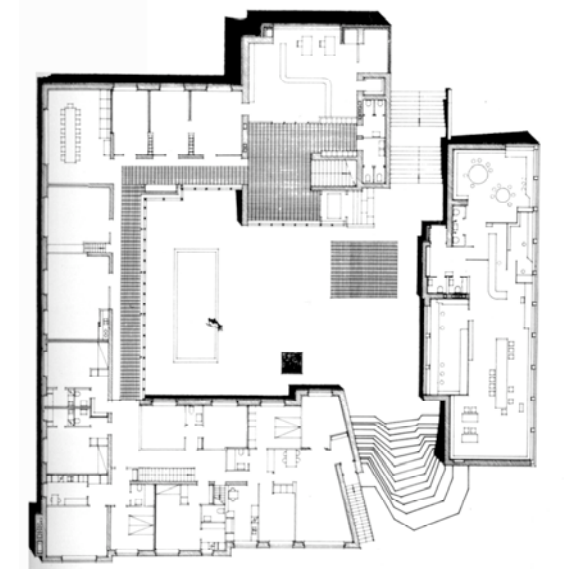
AUA83\_59C



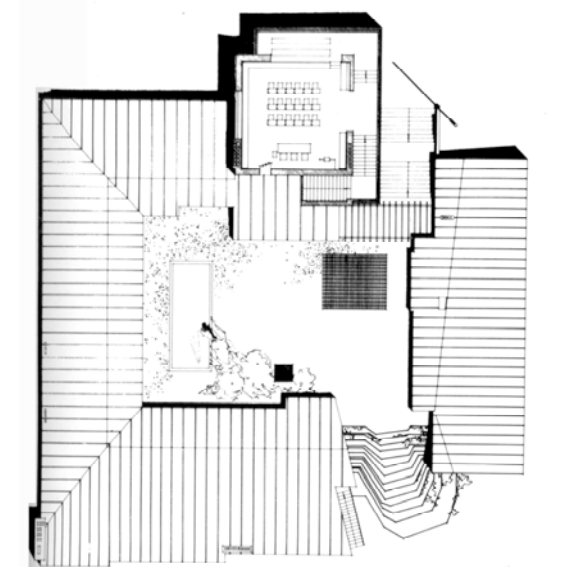
AUA83\_59DET



南北断面图, North-south section.



2层平面图, Second-floor plan.

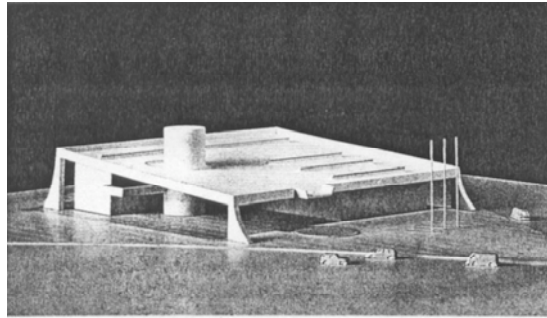


3层平面图, Third-floor plan.

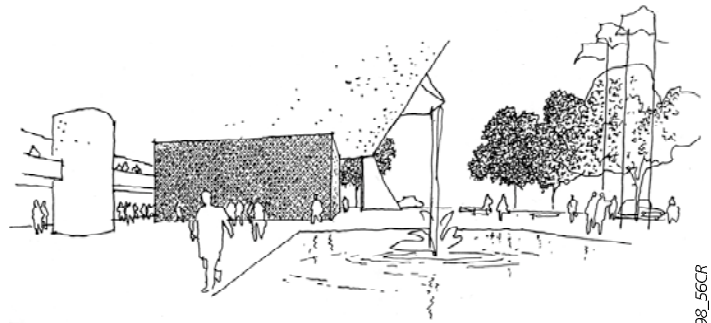
AUA83\_57L



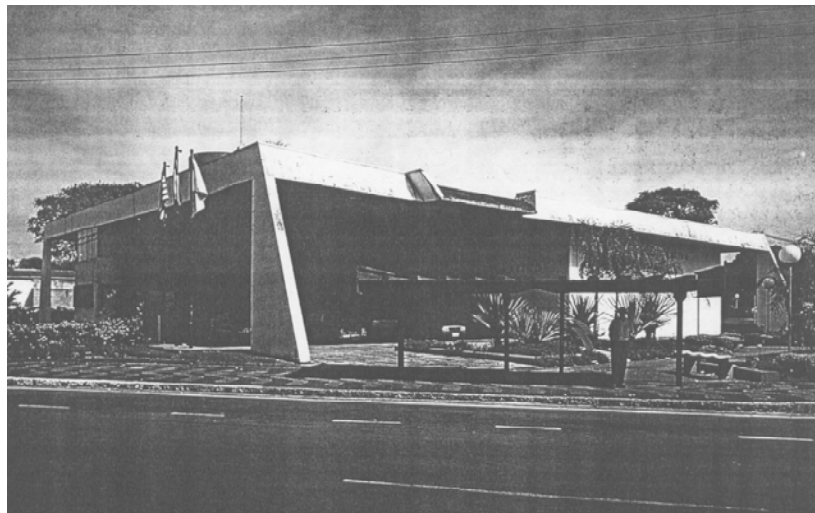
FORUM DE ARARAS, 1960, FABIO PENTEADO



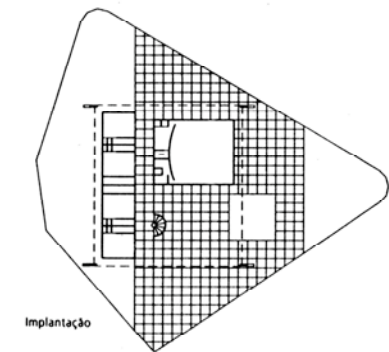
FP98\_56A



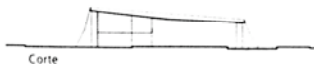
FP98\_56CR



FP98\_57A



Implantação



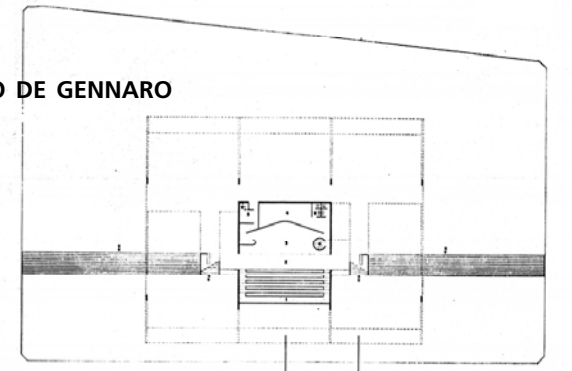
Corte

FP98\_57DES

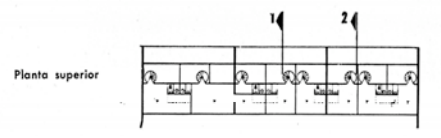
FORUM DE AVARÉ, 1961, PAULO MENDES DA ROCHA E JOÃO DE GENNARO



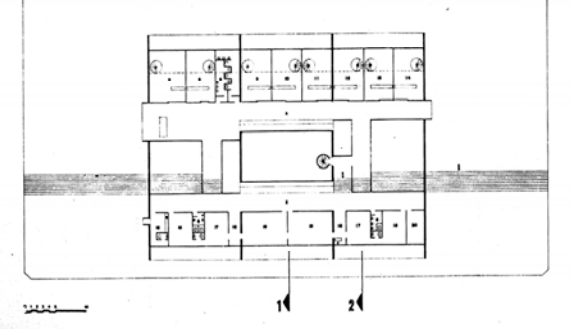
PVR2000\_139A



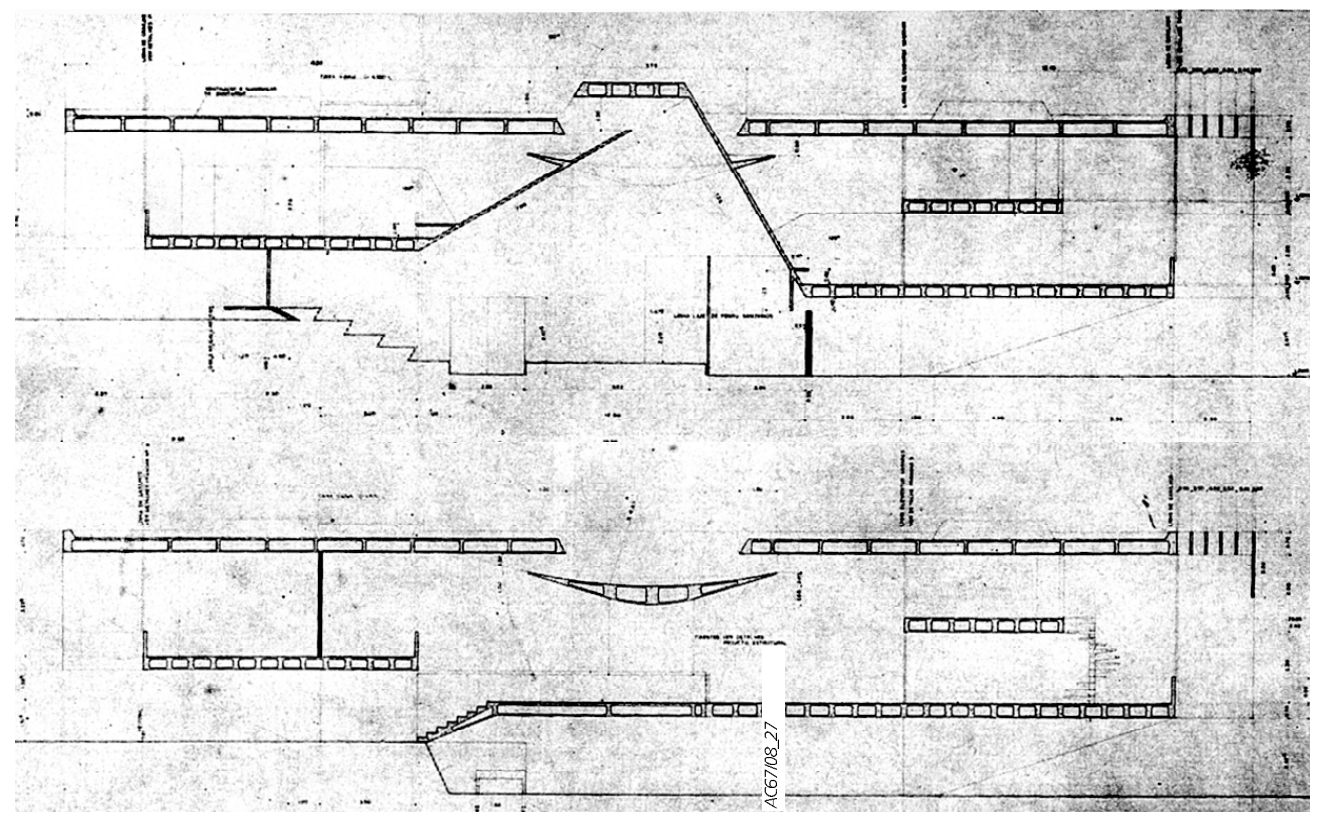
Planta no nível da Praça; Salão do Júri



Planta superior

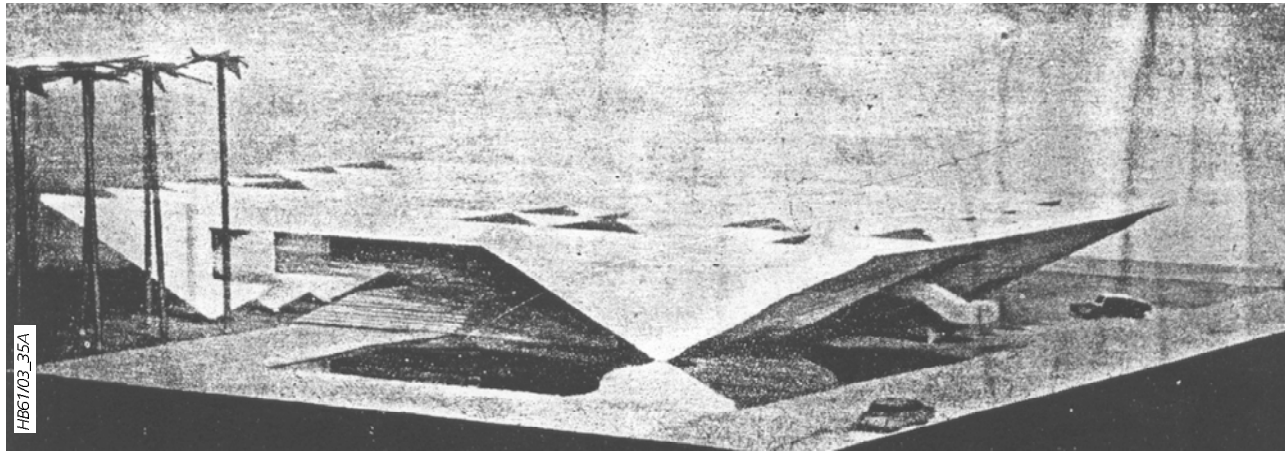


Planta no nível das galerias superiores

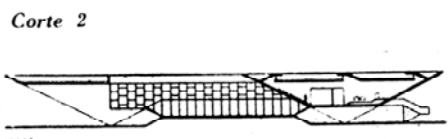


AC67108\_27

FORUM DE SÃO JOSÉ DOS CAMPOS, 1961, PAULO SERGIO SOUZA E SILVA

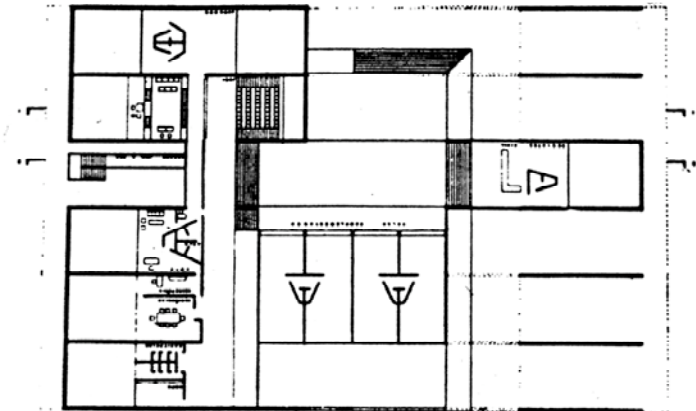


Corte 1

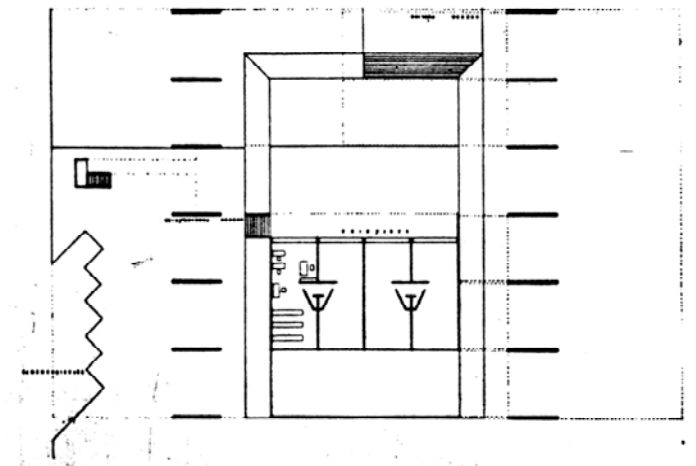


Corte 2

HB61/03\_36



Plantas.



HB61/03\_36