


# In Vitro Fertilization and Vasa Previa: A Report of Two Cases

## *Fertilização in vitro e vasa previa: relato de dois casos*

Ana Lúcia Isotton<sup>1,2</sup>  Cristiano Caetano Salazar<sup>2,3</sup> Cleisson Fábio Andrioli Peralta<sup>4</sup>  
Juliana Moysés Leite Abdalla<sup>4</sup> Janete Vettorazzi<sup>1,2,3,5</sup>

<sup>1</sup> Service of Fetal Medicine, Medicina Fetal Porto Alegre, Porto Alegre, RS, Brazil

<sup>2</sup> Service of Gynecology and Obstetrics, Hospital Moinhos de Vento, Porto Alegre, RS, Brazil

<sup>3</sup> Service of Gynecology and Obstetrics, Hospital de Clínicas de Porto Alegre, Porto Alegre, RS, Brazil

<sup>4</sup> Service of Fetal Medicine, Gestar Centro de Medicina Fetal, São Paulo, SP, Brazil

<sup>5</sup> Postgraduation Program in Health Sciences, Gynecology and Obstetrics, Universidade Federal do Rio Grande do Sul, Porto Alegre, Brazil

Address for correspondence Ana Lúcia Isotton, MD, Av. Cristóvão Colombo, 2948/908, 90560-002, Porto Alegre, RS, Brazil  
(e-mail: anaisotton@terra.com.br).

Rev Bras Ginecol Obstet 2019;41:348–351.

### Abstract


Vasa previa (VP) is a dangerous obstetric condition associated with perinatal mortality and morbidity. In vitro fertilization (IVF) is a risk factor for VP due to the high incidence of abnormal placentation. The diagnosis should be made prenatally, because fetal mortality can be extremely high. We report two cases to demonstrate the accuracy of transvaginal ultrasound in the prenatal diagnosis of VP. A 40-year-old primiparous Caucasian woman with IVF pregnancy was diagnosed with VP at 29 weeks of gestation and was hospitalized for observation at 31 weeks of gestation. She delivered a male newborn weighing 2,380 g, with an Apgar score of 10 at 5 minutes, by elective cesarean section at 34 weeks + 4 days of gestation, without complications. A 36-year-old primiparous Caucasian woman with IVF pregnancy was diagnosed with placenta previa, bilobed placenta increta and VP. The cord insertion was velamentous. She was hospitalized for observation at 26 weeks of gestation. She delivered a female newborn weighing 2,140 g, with an Apgar score of 9 at 5 minutes, by emergency cesarean section at 33 weeks + 4 days of gestation due to vaginal bleeding. The prenatal diagnosis of VP was associated with a favorable outcome in the two cases, supporting previous observations that IVF is a risk factor for VP and that all IVF pregnancies should be screened by transvaginal ultrasound.

### Keywords

- ▶ vasa previa
- ▶ in vitro fertilization
- ▶ placenta previa

### Resumo

Vasa previa (VP) é uma condição obstétrica perigosa associada a mortalidade e morbidade perinatais. Fertilização in vitro (FIV) é um fator de risco para VP devido à alta incidência de placentação anormal. O diagnóstico deve ser realizado no período

 Ana Lúcia Isotton's ORCID is <https://orcid.org/0000-0003-3466-043X>.

received  
September 25, 2018  
accepted  
January 28, 2019

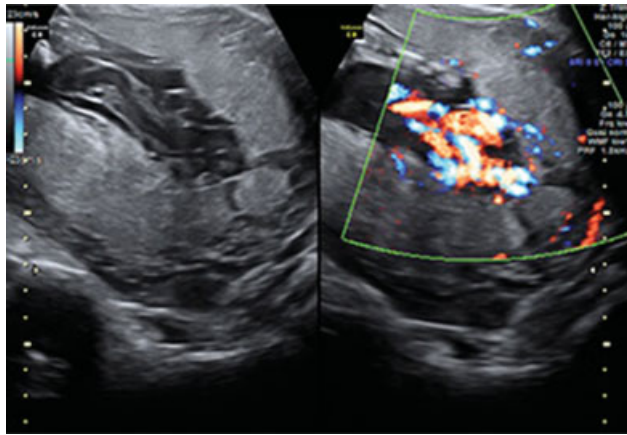
DOI <https://doi.org/10.1055/s-0039-1683354>.  
ISSN 0100-7203.

Copyright © 2019 by Thieme Revinter  
Publicações Ltda, Rio de Janeiro, Brazil

License terms







**Fig. 3** High-definition color-flow Doppler imaging showing bilobed placenta previa and velamentous insertion of the umbilical cord.



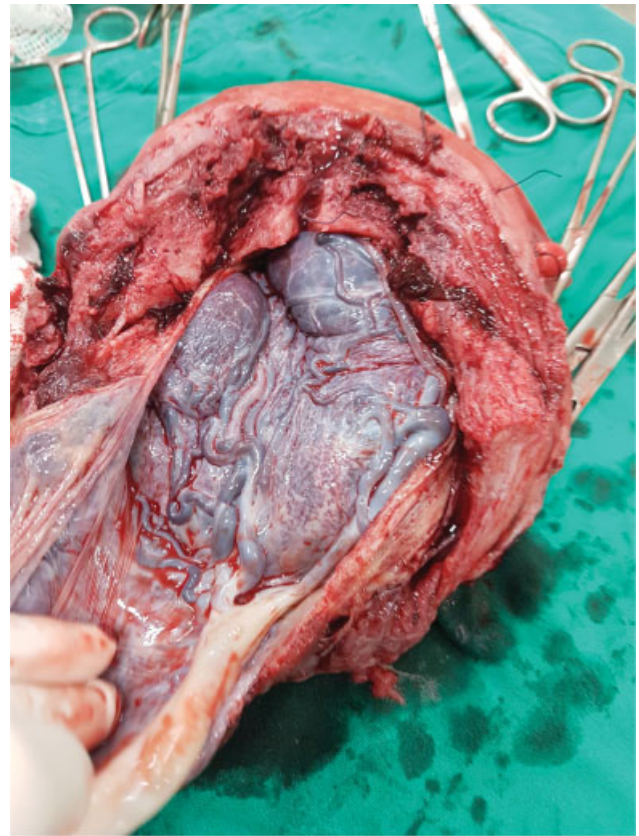
**Fig. 4** Transvaginal ultrasound with high-definition color-flow Doppler imaging of vasa previa (VP).

weighing 2,140 g, with an Apgar score of 9 at 5 minutes, by emergency cesarean section at 33 weeks + 4 days of gestation due to vaginal bleeding. After delivery, a hysterectomy was performed without removing the placenta. The newborn was referred to the neonatal ICU and remained there for 16 days on CPAP. The newborn progressed well with exclusive breastfeeding.

## Discussion

Vasa previa is a complication of pregnancy in which fetal blood vessels lie outside the chorionic plate, in close proximity to the internal cervical os. These vessels may rupture with resultant fetal hemorrhage, exsanguination, or even death.<sup>1</sup>

Approximately 1 per 2,500 deliveries are complicated by VP, and the major risk factors are velamentous cord insertion and succenturiate placental lobe or bilobed placenta.<sup>2,3</sup> Approximately 60% of the women with VP at delivery had a placenta previa or a low-lying placenta identified during the second trimester ultrasound examination.<sup>4</sup> Another risk factor is IVF, which may increase the risk of VP to ~ 1 per 250 deliveries.<sup>5,6</sup>



**Fig. 5** Macroscopic image of the uterus and placenta with a velamentous insertion of the umbilical cord.

The present report supports previous observations that IVF is a risk factor for VP, and transvaginal ultrasound screening for VP appears to be most cost-effective when performed among IVF pregnancies.<sup>7</sup> Jauniaux et al<sup>8</sup> found an incidence of bilobed and succenturiate-lobed placenta of 22% in the IVF group compared with 6% in the control group. Abnormal umbilical cord insertion with normal placental morphology has been associated with IVF. Englert et al<sup>9</sup> found a marginal insertion of the umbilical cord in 15% of the cases, and velamentous insertion in 14% of the cases, more frequently than in the general obstetric population. Romundstad et al<sup>10</sup> reported that the risk of placenta previa was 3-fold higher in pregnancies following assisted fertilization (odds ratio [OR] = 2.9; 95% confidence interval [CI]: 1.4–6.1) compared with naturally conceived pregnancies.

High estradiol concentrations at the time of implantation may impair the endometrial response to trophoblast invasion, leading to abnormal placentation.<sup>11–13</sup> Farhi et al<sup>11</sup> found that a concentration > 10,000 pmol/L led to significantly more complications related to abnormal placentation.

The diagnosis of VP by ultrasound combined with color Doppler imaging can be made during the routine examination of the placenta and of the lower uterine segment, with a detection rate of 93% and a specificity of 99%.<sup>14</sup> Transvaginal ultrasound is extremely important for an accurate diagnosis, and cases that are not diagnosed prenatally are often associated with serious complications, such as fetal death, low Apgar scores, and severe anemia.<sup>14,15</sup>

## Conclusion

Vasa previa is strongly associated with abnormal placentation in the second trimester and can be accurately diagnosed by ultrasound. In the two cases reported here, the prenatal diagnosis of VP was associated with a favorable outcome.

### Conflicts of Interest

The authors have no conflicts of interest to declare.

## References

- 1 Society of Maternal-Fetal (SMFM) Publications Committee. Sinkey RG, Odibo AO, Dashe JS. #37: Diagnosis and management of vasa previa. *Am J Obstet Gynecol* 2015;213:615–619. Doi: 10.1016/j.ajog.2015.08.031
- 2 Catanzarite V, Maida C, Thomas W, Mendoza A, Stanco L, Piacquadio KM. Prenatal sonographic diagnosis of vasa previa: ultrasound findings and obstetric outcome in ten cases. *Ultrasound Obstet Gynecol* 2001;18(02):109–115. Doi: 10.1046/j.1469-0705.2001.00448.x
- 3 Hasegawa J, Farina A, Nakamura M, et al. Analysis of the ultrasonographic findings predictive of vasa previa. *Prenat Diagn* 2010;30(12-13):1121–1125. Doi: 10.1002/pd.2618
- 4 Bronsteen R, Whitten A, Balasubramanian M, et al. Vasa previa: clinical presentations, outcomes, and implications for management. *Obstet Gynecol* 2013;122(2 Pt 1):352–357. Doi: 10.1097/AOG.0b013e31829cac58
- 5 Baulies S, Maiz N, Muñoz A, Torrents M, Echevarría M, Serra B. Prenatal ultrasound diagnosis of vasa praevia and analysis of risk factors. *Prenat Diagn* 2007;27(07):595–599. Doi: 10.1002/pd.1753
- 6 Pirtea LC, Grigoraş D, Sas I, et al. In vitro fertilization represents a risk factor for vasa praevia. *Rom J Morphol Embryol* 2016;57(2, Suppl):627–632
- 7 Sinkey RG, Odibo AO. Vasa previa screening strategies: decision and cost-effectiveness analysis. *Ultrasound Obstet Gynecol* 2018; 52(04):522–529. Doi: 10.1002/uog.19098
- 8 Jauniaux E, Englert Y, Vanesse M, Hiden M, Wilkin P. Pathologic features of placentas from singleton pregnancies obtained by in vitro fertilization and embryo transfer. *Obstet Gynecol* 1990; 76(01):61–64
- 9 Englert Y, Imbert MC, Van Rosendaal E, et al. Morphological anomalies in the placentae of IVF pregnancies: preliminary report of a multicentric study. *Hum Reprod* 1987;2(02):155–157. Doi: 10.1093/oxfordjournals.humrep.a136500
- 10 Romundstad LB, Romundstad PR, Sunde A, von Düring V, Skjaerven R, Vatten LJ. Increased risk of placenta previa in pregnancies following IVF/ICSI; a comparison of ART and non-ART pregnancies in the same mother. *Hum Reprod* 2006;21(09):2353–2358. Doi: 10.1093/humrep/del153
- 11 Farhi J, Ben-Haroush A, Andrawus N, et al. High serum oestradiol concentrations in IVF cycles increase the risk of pregnancy complications related to abnormal placentation. *Reprod Biomed Online* 2010;21(03):331–337. Doi: 10.1016/j.rbmo.2010.04.022
- 12 Simón C, Cano F, Valbuena D, Remohí J, Pellicer A. Clinical evidence for a detrimental effect on uterine receptivity of high serum oestradiol concentrations in high and normal responder patients. *Hum Reprod* 1995;10(09):2432–2437. Doi: 10.1093/oxfordjournals.humrep.a136313
- 13 Healy DL, Breheny S, Halliday J, et al. Prevalence and risk factors for obstetric haemorrhage in 6730 singleton births after assisted reproductive technology in Victoria Australia. *Hum Reprod* 2010; 25(01):265–274. Doi: 10.1093/humrep/dep376
- 14 Ruiters L, Kok N, Limpens J, et al. Systematic review of accuracy of ultrasound in the diagnosis of vasa previa. *Ultrasound Obstet Gynecol* 2015;45(05):516–522. Doi: 10.1002/uog.14752
- 15 Sullivan EA, Javid N, Duncombe G, et al. Vasa previa diagnosis, clinical practice, and outcomes in Australia. *Obstet Gynecol* 2017; 130(03):591–598. Doi: 10.1097/AOG.0000000000002198