





Formation of S0s in extreme environments I: clues from kinematics and stellar populations

Lodovico Coccato ¹★, Yara L. Jaffé ², Arianna Cortesi^{3,4}, Michael Merrifield⁵, Evelyn Johnston ⁶, Bruno Rodríguez del Pino⁷, Boris Haeussler⁸, Ana L. Chies-Santos ⁹, Claudia L. Mendes de Oliveira³, Yun-Kyeong Sheen¹⁰ and Karín Menéndez-Delmestre⁴

¹European Southern Observatory, Karl-Schwarzschild-str., 2, D-85748 Garching b. München, Germany

²Facultad de Ciencias, Instituto de Física y Astronomía, Universidad de Valparaíso, Gran Bretaña 1111, 5030 Casilla, Valparaíso, Chile

³Instituto de Astronomia, Geofísica e Ciências Atmosféricas (IAG), Universidade de São Paulo (USP), R. do Matão 1226, 05508-090 São Paulo, Brazil

⁴Observatorio de Valongo, Universidade Federal do Rio de Janeiro, Ladeira do Pedro Antônio, 43, Centro, Rio de Janeiro - RJ 20080-090, Brazil

⁵School of Physics and Astronomy, University of Nottingham, University Park, Nottingham NG7 2RD, UK

⁶Instituto de Astrofísica, Pontificia Universidad Católica de Chile, Av. Vicuña Mackenna 4860, 7820436 Macul, Santiago, Chile

⁷Centro de Astrobiología (CSIC-INTA), Torrejón de Ardoz, E-28850 Madrid, Spain

⁸European Southern Observatory, Alonso de Cordova 3107 Vitacura Casilla 7630355 Santiago, Chile

⁹Departamento de Astronomia, Universidade Federal do Rio Grande do Sul, Av. Bento Gonçalves 9500, 91501-970 Porto Alegre, RS, Brazil

¹⁰Korea Astronomy and Space Science Institute, 776, Daedeokdae-ro, Yuseong-gu, Daejeon 34055, Korea

Accepted 2019 December 16. Received 2019 December 13; in original form 2019 June 14

ABSTRACT

Despite numerous efforts, it is still unclear whether lenticular galaxies (S0s) evolve from spirals whose star formation was suppressed, or formed through mergers or disc instabilities. In this paper we present a pilot study of 21 S0 galaxies in extreme environments (field and cluster), and compare their spatially resolved kinematics and global stellar populations. Our aim is to identify whether there are different mechanisms that form S0s in different environments. Our results show that the kinematics of S0 galaxies in field and cluster are, indeed, different. Lenticulars in the cluster are more rotationally supported, suggesting that they are formed through processes that involve the rapid consumption or removal of gas (e.g. starvation, ram pressure stripping). In contrast, S0s in the field are more pressure supported, suggesting that minor mergers served mostly to shape their kinematic properties. These results are independent of total mass, luminosity, or disc-to-bulge ratio. On the other hand, the mass-weighted age, metallicity, and star formation time-scale of the galaxies correlate more with mass than with environment, in agreement with known relations from previous work, such as the one between mass and metallicity. Overall, our results re-enforce the idea that there are multiple mechanisms that produce S0s, and that both mass *and* environment play key roles. A larger sample is highly desirable to confirm or refute the results and the interpretation of this pilot study.

Key words: galaxies: elliptical and lenticular, cD – galaxies: formation – galaxies: kinematics and dynamics.

1 INTRODUCTION

Lenticular galaxies (S0s) outnumber galaxies of other morphological types in the local Universe (Bernardi et al. 2010), and their number density has increased with time in clusters and groups since $z \sim 1$ at the expenses of spirals (e.g. Dressler 1980; Poggianti et al.

2009). Therefore, understanding their formation is a key element in understanding galaxy evolution.

S0s have long been thought of as quenched spirals since they share the discy morphology of spirals, but have the redder colours of older stellar populations. Evidence for this evolutionary scenario comes from studies such as Dressler (1980), Dressler et al. (1997), Cappellari et al. (2011b), which show that the fraction of S0s increases towards higher density environments and lower redshift, while spirals show the opposite trend. A popular explanation is that spiral galaxies falling into clusters lose their gas via ram pressure

* E-mail: lcoccato@gmail.com

stripping (e.g. Gunn & Gott 1972; Steinhauser et al. 2012) or tidal interactions (e.g. Merluzzi et al. 2016), thus enhancing the population of lenticulars. Quenching of star formation in spiral galaxies is also a possible mechanism: among spiral galaxies hosting a classical bulge, the fraction of quenched galaxies increases with denser environments, which then lead to an increase in the fraction of S0s (Mishra, Wadadekar & Barway 2018). However, observations of nearby isolated S0s (van den Berg, Hong & Grindlay 2009) have suggested that there must be alternative evolutionary pathways to form S0s. One possibility is that isolated S0 galaxies are the end product of past minor mergers that used up the gas in the disc, concentrating it to the central parts of the galaxy to form a classical bulge, analogous to ‘fossil groups’ (Ponman et al. 1994; Arnold et al. 2011). Similarly, mergers could induce the formation of a bar in the disc that can, in turn, build up a pseudo-bulge. *N*-body simulations (Bournaud, Jog & Combes 2005; Eliche-Moral et al. 2012) have indeed suggested that dry intermediate (mass ratios of 1:4 – 1:7) and minor (<1:7) mergers can induce global structural evolution resulting in S0 systems. Alternatively, S0s could simply be faded field spiral galaxies that exhausted their gas reservoirs and lost their spiral structures through disc instabilities (starvation, Eliche-Moral et al. 2013). Finally, low-mass S0s could also have originated from primordial galaxies formed at redshift ~ 2 through violent disc instability and fragmentation (Saha & Cortesi 2018).

Much observational effort has been made to distinguish between these scenarios. For instance studies, of nearby S0s (either isolated or in groups) have revealed that their discs are dynamically hotter than those in spirals of similar luminosity (Cortesi et al. 2013), and that their blue globular cluster population has a wide range of ages (Chies-Santos et al. 2011; Lee, Chung & Yoon 2019), suggesting past interaction with other galaxies, and therefore favouring minor-merger scenarios for the formation of S0s. In contrast, other recent studies on globular cluster kinematics (Bellstedt et al. 2017) do not favour mergers as formation mechanism for lenticular galaxies, although they cannot entirely rule them out. Moreover, using 3D spectroscopy, Katkov, Sil’chenko & Afanasiev (2014) found that the number of field S0s with counter-rotating gas kinematics is higher than in denser environments, implying that this gas could have been accreted from dwarf satellites. However, the S0 Tully–Fisher relation (Tully & Fisher 1977) has been found to be systematically fainter at fixed rotational velocity than the spiral relation (Williams, Bureau & Cappellari 2010; Cortesi et al. 2013; Jaffé et al. 2014), suggesting that S0s are faded spirals that consumed their gas reservoirs. Other studies have further shown that the luminosity of bulges in S0s, relative to their associated discs, are brighter than expected from a simple cessation of star formation in the disc (Christlein & Zabludoff 2004). In addition, Johnston et al. (2012), Johnston, Aragón-Salamanca & Merrifield (2014) found evidence of younger stellar populations in the bulge regions of Fornax and Virgo S0s, triggered by residual disc gas that was channelled into the centre of the galaxy, inducing star formation, and thus increasing the luminosity of the bulge relative to the disc. Similar behaviour is observed in 13 post-starburst spiral galaxies in the Abell Cluster S1077 (AC114), which had their last episode of star formation towards the central parts of the galaxies (Rodríguez Del Pino et al. 2014), suggesting indeed a link between S0s and spirals.

Broadly speaking, the main formation mechanisms of lenticular galaxies discussed above relate either to mass accretions (e.g. merger) or gas-related effects (e.g. ram pressure stripping, gas accretion, quenching of star formation). Undoubtedly, different

environments can contribute in different ways to these mechanisms (see for example Aguerrí 2012 and Vollmer 2013 for reviews). It is therefore fair to ask whether or not S0s in the field have different properties from S0s in clusters. The best way to characterize the global properties of galaxies is to combine morphological and kinematic information, with a spatially resolved analysis of their stellar kinematics and populations out to large radii. To this end, we have embarked on a project aimed at studying the properties of lenticular galaxies in extreme environments. Recent attempts (e.g. Fraser-McKelvie et al. 2018; Rizzo, Fraternali & Iorio 2018) found no significant dependency with the environment; in particular, Fraser-McKelvie et al. (2018) indicates mass as the main driver for S0 formation. However, their sample did not contain galaxies in cluster, whereas in this study, we seek to optimize any signal by select disc galaxies from the extremes of environments, field, and cluster. The main scientific drivers of our study are (i) investigate whether or not S0s living in extreme environments have different properties. Then, if differences are indeed present, (ii) establish a link between these differences and the formation mechanisms, and hence (iii) identify the dominant formation mechanism that acts in a given environment.

This paper presents the first results of the project, based on tailored pilot MUSE (The Multi-Unit Spectroscopic Explorer Bacon et al. 2010) observations of a small sample of galaxies and complementary integral-field data from the literature. Here, we concentrate mainly on the spatially resolved kinematic analysis (stellar v/σ and specific angular momentum), presence of ionized gas, and on the average properties of the stellar population (mass-weighted age, metallicity and star formation time-scale). Future works will present a detailed analysis of the stellar populations of the galaxy structural components (such as bulge and disc). The sample of galaxies studied in this paper is described in Section 2. Data reduction and analysis of new galaxies are discussed in Section 2.1. The measurement of global properties both for new and literature data and the results of their comparison is discussed in Section 3. Finally, Section 4 presents the initial conclusions from this study.

2 THE SAMPLE OF GALAXIES

Galaxies in our sample were chosen from a pilot MUSE program that includes dedicated observations of eight S0s in extreme environments (i.e. field and cluster),¹ plus 13 galaxies from publicly available data of the ATLAS3D survey (Cappellari et al. 2011a) to augment the sample.

One part of the sample comprises isolated galaxies, drawn from the 2MASS Isolated Galaxies Catalogue (2MIG; Karachentseva et al. 2010). For the MUSE campaign, we selected four 2MIG targets that were visually classified as S0s by the team, and that were observable from Paranal. To these were added the eight S0 galaxies studied by the ATLAS 3D survey that are present in the 2MIG catalogue or that are in an environment with galaxy 3D density² lower than $\log \rho_{10}/[\text{Mpc}^{-3}] \leq -2.5$.

The rest of the sample galaxies belong to dense galaxy clusters. For the MUSE campaign, we selected four S0s in the Centaurus cluster, from the sample of Jerjen & Dressler (1997). To these were added the five galaxies in the ATLAS 3D survey that live in an

¹Prog ID: 096.B-0325, PI. Jaffé.

²Cappellari et al. (2011b) defines ρ_{10} as the mean density of galaxies inside a sphere centred on the galaxy and containing the 10 nearest neighbours.

environment with a galaxy 3D density greater than $\log \rho_{10}/[\text{Mpc}^{-3}] \geq 1$.³

All the galaxies in this study have morphological Hubble type $-3.5 < T < -5$, from LEDA and do not show clear evidence of strong bars or tidal interactions in their visual appearance. These morphological criteria were the same as those used in the ATLAS 3D survey to disentangle S0s from ellipticals. However, because the classification of S0s in the past was very much influenced by the limited dynamic range of photographic plates, we have also visually inspected the sample galaxies. In addition, for the MUSE sample, the presence of a disc-like rotating stellar structure is also reflected in the kinematics (see Appendix A). For the ATLAS 3D sample, their S0 nature was also confirmed by Krajnović et al. (2013), with the exception of eight galaxies (marked with asterisks in the last column of Table 2). The morphological structure of these eight galaxies was uncertain to Krajnović et al. (2013), and therefore these galaxies were classified as ‘single Sersic component objects’ (although some of them, for example NGC 6548, are clearly dominated by a disc component). We therefore performed an independent image decomposition on archival images (VLT-VIMOS or 2MASS archives) to verify the presence of a disc component in the photometric profile.⁴ The inclusion or exclusion of these eight objects and their impact on our results will be discussed in Section 4.1.1.

The total number of lenticular galaxies considered in this study is 21 – 12 isolated and 9 in cluster (although not the densest environments in the Universe, the Virgo and Centaurus Clusters from which these objects were selected are very much cluster environments, and have the key benefit of observability and plentiful data from the literature). Table 1 and Fig. 1 summarize their main properties. One can immediately see from Fig. 1 that the sample in this pilot study is not homogeneous: massive and luminous galaxies are underrepresented in the cluster sample. The effects of selection biases will be discussed in Section 4.1. The scatter on the relations shown in Fig. 1 is mainly dominated by measurement errors (uncertainty on galaxy distance has been included in the luminosity error computation) and by the degeneracy between baryonic matter and dark matter that is present in the dynamical models.

In the following we describe the MUSE observations and data reduction.

2.1 The MUSE observations and data reduction

Observations were executed with the MUSE mounted on Unit Telescope 4 as the ESO La Silla Paranal observatory (Chile). MUSE was configured in WFM-NOAO-N mode (wide field of view, no adaptive optics, nominal wavelength coverage) that ensured a spatial sampling of 0.2 arcsec per spaxel and a spectral coverage of 4750–9350 Å with a nominal resolving power of $R \sim 2000$.

Observations were executed in service mode between 2015 October and 2016 February (Period 96) and organized in a series of observing blocks. Each observing block contains several exposures on target that were slightly dithered and rotated by 90° with respect to each other to minimize the signature of the IFU geometry in the

final reduced product. For the targets that had a size comparable to the field of view, dedicated offset sky exposures were included in each observing block.

Data reduction was performed with the MUSE pipeline (Weilbacher et al. 2012) version 2.2 executed under the ESOREFLEX environment (Freudling et al. 2013). Depending on the projected size of each target, the contribution of the sky background was computed either from dedicated exposures executed close in time to the science observations (within the same observing block) or from the edges of the field of view, where the contribution of the galaxy was negligible. After removing the sky background, the exposures were then aligned and co-added using bright sources as reference. Whenever available, the cubes of dedicated sky exposures were also sky subtracted and co-added following the same dither pattern as the science observations, creating ‘master cubes’ of sky residuals. Sky residuals were further reduced using the ZAP algorithm (Soto et al. 2016); this method models the sky residuals with a series of principal components and then it fits and subtracts them from the science cubes. The sky-residual components were evaluated on the master sky residual cubes or on the border of the field of view, depending on the dimension of the target.

Adjacent spaxels in the datacube were co-added using Voronoi tessellation as implemented by Cappellari & Copin (2003), seeking a target signal-to-noise ratio of 50 per pixel. Spectra in each spatial bin were fitted using the PPF (Cappellari & Emsellem 2004) and GANDALF (Sarzi et al. 2006) spectral fitting procedures to extract stellar and ionized-gas kinematics. Stellar templates from the MIUSCAT spectral library (Vazdekis et al. 2012) at the nominal MUSE spectral resolution of $FWHM = 2.51 \text{ \AA}$ were used in the fit. The spectral range running from 4750 to 7000 Å was used, with regions affected by high residuals from sky or telluric lines masked and excluded from the fit. The 2D maps of velocity, velocity dispersion, and higher Gauss-Hermite moments are shown in Figs A1 and A2.

3 ANALYSIS

In this section we define the global galaxy properties we use to study the differences between cluster and field S0s, and the analysis carried out to measure them. In particular, we will focus our attention on V_{rot}/σ and the proxy for specific angular momentum λ . Then, we compute the Tully–Fisher relation between the circular velocity and the total luminosity in *K*-band, *B*-band, and W1 (3.4 μm) band. Finally, we derived the mass-weighted values of age, metallicity, and star formation time-scale within $1R_e$.

3.1 V_{rot}/σ radial profiles

The V_{rot}/σ radial profile is computed as the ratio of the stellar rotation velocity and velocity dispersion calculated along the kinematic semimajor axis. We performed a harmonic first-term expansion of the observed 2D velocity and velocity dispersion maps using the KINEMETRY code by Krajnović et al. (2006). At each radius a , we fit the amplitude of rotation $V_{\text{rot}}(a)$ (corrected for inclination), the kinematic position angle $PA(a)$, and the projected axial ratio $q(a)$. Errors are directly computed by the Levenberg–Marquardt least-squares minimization algorithm used by the KINEMETRY code. The systemic velocity (V_{sys}) is assumed constant with radius. For each galaxy we then define the median kinematic position angle $\langle PA_{\text{KIN}} \rangle$ and axial ratio $\langle q \rangle$. Their errors are computed as standard deviation of the computed values, divided by the square root of the number of radial bins. Values for each galaxy are reported in Table 2. The

³The adopted thresholds on ρ_{10} (1 and -2.5) represent the densest and less dense environment bins of the ATLAS3D survey (e.g. fig. 8 in Cappellari et al. 2011b).

⁴The reduced images used by Krajnović et al. (2013) are not publicly available.

Table 1. Main properties of the sample galaxies.

GALAXY	Alt. nAME	Survey	Type	Distance [Mpc]	M_K [mag]	M_B [mag]	W1 [mag]	$\log \left(\frac{R_e}{\text{arcsec}} \right)$	$\frac{V_{\text{rot}}}{\sigma(R_e)}$	$\lambda(R_e)$	Gas	Exposure [s]
(1)	(2)	(3)	(4)	(5)	(6)	(7)	(8)	(9)	(10)	(11)	(12)	(13)
field												
PGC 004187	2MIG 131	MUSE	-2.9	106.5 ± 7.5	-24.67 ± 0.16	-	-22.17 ± 0.15	1.508	0.93	0.36	n	670 × 3 (O)
IC 1989	2MIG 445	MUSE	-2.9	157.1 ± 11.1	-25.36 ± 0.16	-21.59 ± 0.26	-22.75 ± 0.15	1.340	0.73	0.28	i	990 × 9 (O) + 90 × 5 (S)
NGC 3546	2MIG 1546	MUSE	-2.5	64.0 ± 4.5	-24.25 ± 0.16	-	-21.58 ± 0.15	1.369	2.43	0.60	y	670 × 4 (O)
PGC 045474	2MIG 1814	MUSE	-3.4	93.8 ± 7.2	-24.60 ± 0.17	-	-22.01 ± 0.17	1.218	0.41	0.19	y	550 × 4 (O) + 60 × 2 (S)
NGC 2880	2MIG 1275	ATLAS ^{3D}	-2.6	21.3 ± 1.9	-22.98 ± 0.20	-19.23 ± 0.26	-20.01 ± 0.19	1.312	2.03	0.55	y	-
NGC 3098	2MIG 1374	ATLAS ^{3D}	-1.5	23.0 ± 1.8	-22.72 ± 0.18	-18.98 ± 0.21	-19.91 ± 0.17	1.013	1.27	0.35	y	-
NGC 6149	UGC 10391	ATLAS ^{3D}	-2.0	37.2 ± 3.0	-22.60 ± 0.18	-	-19.91 ± 0.18	1.039	1.52	0.52	y	-
NGC 6278	UGC 10656	ATLAS ^{3D}	-1.8	42.9 ± 3.4	-24.49 ± 0.17	-20.00 ± 0.24	-21.28 ± 0.17	1.149	2.01	0.38	y	-
NGC 6548	NGC4549	ATLAS ^{3D}	-1.9	22.4 ± 7.2	-23.19 ± 0.72	-19.62 ± 0.75	-19.21 ± 0.72	1.554	2.18	0.36	y	-
NGC 6703	UGC 11356	ATLAS ^{3D}	-2.8	25.9 ± 2.8	-23.85 ± 0.24	-20.10 ± 0.28	-20.86 ± 0.24	1.485	0.05	0.06	i	-
NGC 6798	2MIG 2649	ATLAS ^{3D}	-1.9	37.5 ± 2.7	-23.52 ± 0.16	-	-20.68 ± 0.16	1.093	0.75	0.31	y	-
PGC 056772	NSA 073372	ATLAS ^{3D}	-1.0	39.5 ± 3.2	-22.06 ± 0.18	-	-19.60 ± 0.18	0.982	0.47	0.33	y	-
cluster												
NGC 4696D	CCC 43	MUSE	-2.1	48.7 ± 4.4	-23.91 ± 0.20	-19.99 ± 0.29	-21.41 ± 0.20	1.344	2.37	0.46	n	520 × 4 (O) + 90 × 2 (S)
NGC 4706	CCC 122	MUSE	-1.9	48.7 ± 4.3	-24.08 ± 0.19	-20.05 ± 0.25	-21.32 ± 0.19	1.264	2.71	0.62	i	850 × 6 (O) + 80 × 3 (S)
PGC 043435	CCC 137	MUSE	-2.1	48.7 ± 4.3	-23.92 ± 0.19	-19.95 ± 0.28	-21.29 ± 0.19	1.179	1.84	0.40	n	520 × 4 (O)
PGC 043466	CCC 158	MUSE	-2.1	48.7 ± 4.3	-23.20 ± 0.20	-19.42 ± 0.28	-20.49 ± 0.19	1.191	1.35	0.42	i	890 × 6 (O)
NGC 4425	VCC 0984	ATLAS ^{3D}	-0.6	16.5 ± 1.0	-22.09 ± 0.13	-18.50 ± 0.15	-19.02 ± 0.13	1.349	0.98	0.38	n	-
NGC 4429	VCC 1003	ATLAS ^{3D}	-0.8	16.5 ± 1.0	-24.32 ± 0.13	-20.12 ± 0.14	-19.03 ± 0.13	1.690	1.29	0.40	y	-
NGC 4435	VCC 1030	ATLAS ^{3D}	-2.1	16.7 ± 1.0	-23.83 ± 0.13	-19.50 ± 0.14	-20.39 ± 0.13	1.371	1.45	0.54	y	-
NGC 4461	VCC 1158	ATLAS ^{3D}	-0.7	16.5 ± 1.0	-23.08 ± 0.13	-19.14 ± 0.14	-19.95 ± 0.13	1.356	1.65	0.49	n	-
NGC 4503	VCC 1412	ATLAS ^{3D}	-1.7	16.5 ± 1.0	-23.22 ± 0.13	-19.04 ± 0.15	-19.99 ± 0.13	1.449	2.12	0.45	n	-

Columns 1–2: name of the galaxy. Column 3: data set the galaxy belongs to. Column 4: morphological type code according to LEDA (<http://leda.univ-lyon1.fr>). Columns 5–6: distance and total M_k luminosity. For galaxies in the MUSE sample, magnitudes are from the 2MASS extended source image server (Cluster sample) and from Karachentseva et al. (2010, field sample), distances from NED (NASA/IPAC Extragalactic Data base), assuming $H_0 = 70 \text{ km s}^{-1} \text{ Mpc}^{-1}$, $\Omega_\Lambda = 0.3$, $\Omega_M = 0.7$. For galaxies in the ATLAS 3D sample, magnitudes and distances are as reported in Cappellari et al. (2011a). Error on magnitude includes the contribution from the error on the distance. Column 7: total apparent ‘face-on’ magnitude corrected for galactic and internal extinction, and for redshift (from de Vaucouleurs et al. 1991). Error on magnitude includes the contribution from the error on the distance. Column 8: WISE (Wright et al. 2010) W1 magnitudes at 3.4μ , corrected for internal and galactic extinction, and with aperture and k corrections (Sorce, Courtois & Tully 2012). Error on magnitude includes the contribution from the error on the distance. Column 9: \log_{10} of the effective radius. For galaxies in the MUSE sample, the value is fitted with GALFIT (Peng et al. 2002) on the reconstructed image obtained from the datacubes its associated error is ~ 10 per cent. For the ATLAS 3D sample the value of R_e is as reported by Cappellari et al. (2013), its associated error is ≈ 22 per cent, according to Section 4.1 of Cappellari et al. (2013). Columns 10 and 11: values of V_{rot}/σ and the λ parameter within 1 effective radius, as computed in Sections 3.1 and 3.2. Column 12: flag indicating the presence of ionized-gas in the spectra (y=yes, n=no, i=only in the innermost regions). Column 13 (for MUSE sample only): observational set-up, indicating the exposure time in seconds for each exposure, the number of exposures on target (O), and on sky offset (S, if acquired).

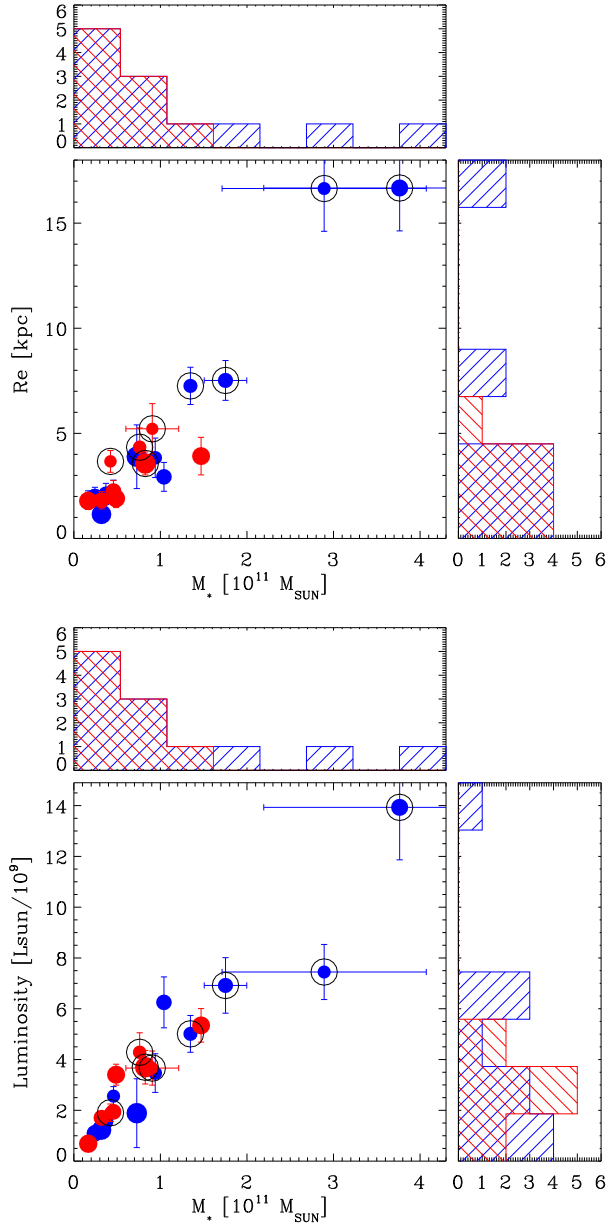


Figure 1. Distribution of the basic properties of the sample galaxies. The plots show the total mass versus the effective radius (upper plot) and the total luminosity (lower plot), the histogram of their distribution on the sides of the axis. Blue indicates field galaxies, whereas red indicates cluster galaxies. The size of the symbols is proportional to the disc-to-total light ratio, discy galaxies are represented by bigger symbols. Galaxies in the MUSE sample are highlighted by a black circle.

velocity dispersion profile $\sigma(a)$ is obtained as weighted average of the measured velocity dispersion computed on concentric ellipses with constant position angle and ellipticity (from $\langle PA_{\text{KIN}} \rangle$ and $\langle q \rangle$), as determined by the fit to the velocity 2D field.

Fig. 2 shows the radial profiles of V_{rot}/σ as function of distance along the semimajor axis expressed in units of effective radii, and the distribution of V_{rot}/σ interpolated at fiducial radii. The figure shows differences in the distributions of V_{rot}/σ radial profiles of the two families of galaxies; in particular, there is indication that lenticulars in the field reach lower values of V_{rot}/σ . If we use $1R_e$ as reference radius, the mean V_{rot}/σ for field galaxies is 1.2 ± 0.2 ,

whereas for cluster galaxies is 1.8 ± 0.2 . The mean values differ by $\sim 3\sigma$; if we consider the error bars, the null-hypothesis that the difference of mean values is consistent with 0 is discarded at $\sim 1.5\sigma$ level (i.e. the error bars touch each other if multiplied by ~ 1.5). If we use $1.5R_e$ as reference radius, the separation of V_{rot}/σ is more evident, but error bars get slightly larger because the number of galaxies for which we obtain kinematics out to that radius is smaller. While the V_{rot}/σ of cluster lenticular galaxies increases from 1 to $1.5R_e$, it decreases for field lenticulars. The difference in the V_{rot}/σ profiles of cluster and field S0s suggests that cluster S0s are more rotationally supported than field ones, which could in turn indicate different formation mechanisms (see discussion in Section 4).

3.2 λ radial profiles

We compare the radial profile of the λ parameter, which is a proxy for the specific angular momentum as defined in Emsellem et al. (2007). The λ profile is computed as function of semimajor axis a of concentric ellipses that have the same flattening and orientation as those used for the computation of V/σ in Section 3.1. Note that λ is a cumulative and luminosity-weighted quantity, whereas V/σ is a ‘local’ kinematic measurement.

Fig. 3 shows the $\lambda(a/R_e)$ profiles for the sample galaxies and the distribution of values at fiducial radii. The distributions of λ profiles of the two families of galaxies look different, suggesting that lenticulars in the field tend to reach lower values of λ . Indeed, if we use $1R_e$ as reference radius, the mean λ of field galaxies is 0.36 ± 0.04 , whereas it is 0.46 ± 0.03 for cluster galaxies. The mean values differ by $\sim 3\sigma$; if we consider the error bars, the null-hypothesis that the difference of mean values is consistent with 0 is discarded at $\sim 1.43\sigma$ level (i.e. the error bars touch each other if multiplied by ~ 1.43). If we consider $1.5R_e$ as reference radius, the separation between field and cluster is $\sim 1\sigma$ (i.e. the error bars of the two measurements touch). Both field and cluster population show an increase of λ if computed at 1 or $1.5R_e$. As in Section 3.1, the different radial profiles of the angular momentum parameter λ found in this section indicate that the field S0s tend to be less dominated by rotation than their cluster counterparts. From inspection of the values of $\lambda(R_e)$ available in the literature for ellipticals and spirals, we note that our field S0s have specific angular momentum closer to the typical values of ellipticals. By contrast, our cluster S0s have angular momenta closer to, although not as high as, the typical values of spirals (see Fig. 3). This suggests that field S0s have formation processes more similar to those of elliptical galaxies (e.g. Bournaud et al. 2005), and that cluster S0s have formation processes more similar to those of spirals (e.g. Eliche-Moral et al. 2013).

3.3 Tully–Fisher relation

The Tully–Fisher relation between the circular velocity and the luminosity of disc galaxies is known to be a very tight correlation for spirals, especially at near-infrared wavelengths (e.g. Sorce et al. 2013). It has been successfully used not only as an extragalactic distance indicator (e.g. Tully, Shaya & Pierce 1992; Courtois, Tully & Héraudeau 2011), but also to study morphological transformation of disc galaxies (e.g. Williams et al. 2010; Cortesi et al. 2013) and environmental effects on such transformations (e.g. Jaffé et al. 2011, 2014).

In this section we derive the Tully–Fisher relation of field and cluster S0 galaxies in our sample, and compare it to that of other

Table 2. Best-fitting parameters of the kinemetry and Jeans axisymmetric models.

GALAXY	$\langle PA_{\text{KIN}} \rangle$	$\langle q \rangle$	V_{circ} [km s ⁻¹]	M_{star} [M _⊙ /10 ¹⁰]	M/L_{star}	Incl [degree]	β	M_{DM} [M _⊙ /10 ¹⁰]	r_s [pc]	D/T
(1)	(2)	(3)	(4)	(5)	(6)	(7)	(8)	(9)	(10)	(11)
field										
PGC 004187	121.7 ± 0.4	0.44 ± 0.05	–	28.92 ± 11.8	7.14 ± 0.04	90	0.09 ± 0.01	–	–	0.49
IC 1989	136.5 ± 0.4	0.59 ± 0.07	–	37.64 ± 15.70	5.53 ± 0.42	90	0.13 ± 0.03	6.00 ± 1.28	2009 ± 11	0.76
NGC 3546	100.0 ± 0.4	0.73 ± 0.11	262 ± 26	13.47 ± 0.40	5.34 ± 0.03	90	0.09 ± 0.01	81.39 ± 0.76	20007 ± 40	0.56
PGC 045474	141.9 ± 0.9	0.62 ± 0.08	271 ± 27	17.52 ± 2.46	5.00 ± 0.14	90	0.16 ± 0.03	10.42 ± 1.28	2000 ± 13	0.63
NGC 2880	142.8 ± 0.6	0.71 ± 0.10	201 ± 20	3.70 ± 0.12	4.28 ± 0.03	51	−0.09 ± 0.03	–	–	0.62 ^(**)
NGC 3098	269.9 ± 1.0	0.50 ± 0.06	193 ± 19	3.19 ± 0.11	4.89 ± 0.03	90	0.18 ± 0.01	–	–	0.94
NGC 6149	200.2 ± 0.5	0.71 ± 0.10	147 ± 15	2.43 ± 0.06	4.11 ± 0.03	66	0.01 ± 0.02	–	–	0.73
NGC 6278	306.5 ± 0.2	0.56 ± 0.07	268 ± 27	10.41 ± 0.29	5.43 ± 0.03	66	0.13 ± 0.01	–	–	0.66
NGC 6548	63.1 ± 0.5	0.47 ± 0.05	234 ± 23	7.27 ± 0.44	7.25 ± 0.06	19	−0.96 ± 0.39	–	–	1.00 ^(***)
NGC 6703	125.7 ± 25.6	0.38 ± 0.04	263 ± 26	9.40 ± 0.07	5.92 ± 0.01	19	−0.08 ± 0.02	–	–	0.53 ^(***)
NGC 6798	138.5 ± 1.1	0.28 ± 0.03	191 ± 19	4.58 ± 0.12	4.29 ± 0.03	84	0.09 ± 0.01	–	–	0.50
PGC 056772	190.9 ± 26.6	0.40 ± 0.04	129 ± 13	1.64 ± 0.04	3.91 ± 0.03	64	0.46 ± 0.01	–	–	0.37 ^(***)
cluster										
NGC 4696D	318.4 ± 0.4	0.44 ± 0.05	–	9.06 ± 0.38	5.37 ± 0.04	90	0.07 ± 0.01	–	–	0.44
NGC 4706	27.7 ± 0.2	0.48 ± 0.06	205 ± 21	7.60 ± 0.25	4.81 ± 0.03	90	−0.03 ± 0.01	–	–	0.52
PGC 043435	13.2 ± 0.3	0.52 ± 0.06	–	8.25 ± 0.47	6.93 ± 0.06	90	0.05 ± 0.01	–	–	1.00
PGC 043466	325.7 ± 0.4	0.43 ± 0.05	–	4.23 ± 0.60	5.00 ± 0.14	90	0.00 ± 0.02	–	–	0.45
NGC 4425	207.0 ± 0.3	0.38 ± 0.04	117 ± 12	1.66 ± 0.01	4.05 ± 0.01	90	0.30 ± 0.00	–	–	0.85 ^(**)
NGC 4429	85.3 ± 1.3	0.68 ± 0.09	283 ± 28	14.70 ± 3.05	6.14 ± 0.21	70	0.00 ± 0.01	–	–	0.82 ^(*)
NGC 4435	192.8 ± 0.6	0.45 ± 0.05	237 ± 24	4.88 ± 0.27	3.91 ± 0.06	68	0.00 ± 0.02	–	–	0.83
NGC 4461	12.1 ± 0.5	0.57 ± 0.07	190 ± 19	3.20 ± 0.08	3.93 ± 0.02	71	0.12 ± 0.01	–	–	0.69 ^(***)
NGC 4503	182.5 ± 0.8	0.70 ± 0.10	208 ± 21	4.57 ± 0.13	5.07 ± 0.03	67	0.24 ± 0.01	–	–	0.68 ^(***)

Columns 1: name of the galaxy. Columns 2 and 3: median values of the kinematic position angle and flattening computed by the kinemetry analysis. Column 4: Circular velocity computed as mean of the values in the last 75 per cent of the radial extend of the V_{circ} curve. Columns 5–10: best-fitting parameters of the Jeans axisymmetric model. Column 11: dist-to-total luminosity in the R -band. Values of the MUSE sample are from our photometric bulge-disc decomposition of MUSE observations. Values for the ATLAS3D sample are from Krajnović et al. (2013), except for ^(*) for which we applied photometric decomposition with GALFIT on reduced ESO archive data (P.I. Puzia, Prog. ID: 090.B-0498(A), Data set ID: ADP.2018-03-26T11.15.10.464), and for ^(**), for which we applied photometric decomposition with GALFIT on 2MASS images (Skrutskie et al. 2006).

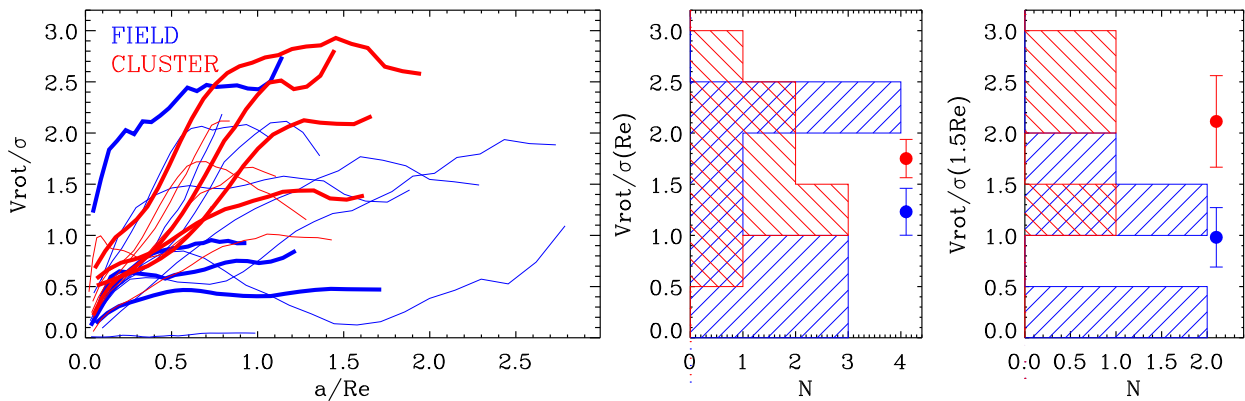


Figure 2. Comparison between the V_{rot}/σ radial profiles of field (blue) and cluster (red) galaxies in our sample. Thick lines identify the MUSE sample, thin lines the ATLAS3D sample. The right-hand side of the figure shows the histograms of the value of V_{rot}/σ at $1 R_e$ and $1.5 R_e$.

S0s and spirals from the literature. To construct the Tully–Fisher relation, we first had to derive the circular velocity in our galaxy sample. For this we constructed axisymmetric models by fitting the second moment Jeans equations (e.g. Binney & Tremaine 2008) to the data. To do that, we adopted the procedures set out in the Multi-Gaussian Expansion (MGE; Cappellari 2002) and Jeans Axisymmetric Model (JAM; Cappellari 2008) packages. Details of the procedure are outlined in Section 3.3.1. Only those galaxies for which we reached a relatively flat regime in the circular velocity curve are included in the analysis (see end of Section 3.3.1). The error on V_{circ} accounts for errors in the JAM best-fitting

parameter plus a 10 per cent uncertainty due to differences in various methods of evaluating V_{circ} (via Jeans or Schwarzschild models, asymmetric drift, or CO rotation curves), as advocated by Leung et al. (2018).

Fig. 4 shows the Tully–Fisher relations obtained for field (blue) and cluster (red) S0 galaxies in K, B, and $3.4 \mu\text{m}$ bands. B -band is more sensitive to star formation, while M_k and $W1$ are better tracers for the underlying older stellar populations. Overall, there is a good agreement within error bars with the relation determined for S0s by other authors (Williams et al. 2010). Lenticular galaxies lie below the Tully–Fisher relation found for spiral galaxies at all bands: at

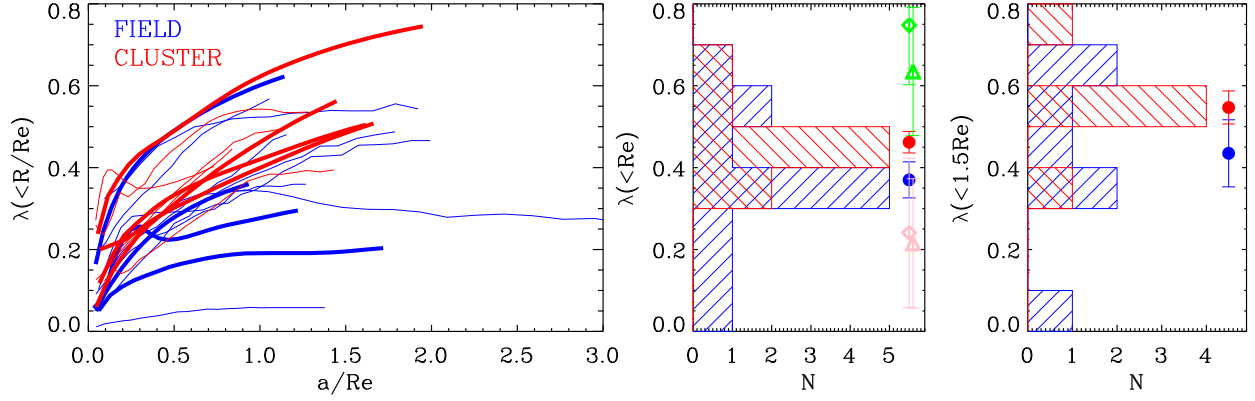


Figure 3. Comparison between the radial profiles of the proxy for specific angular momentum (λ) in field galaxies (blue) and cluster galaxies (red) in our sample. Thick lines identify the MUSE sample, thin lines the ATLAS3D sample. The right-hand side of the figure shows the histograms of the value of λ at 1 and $1.5 R_e$. The green symbol shows the mean value for spiral galaxies at $1 R_e$ (diamonds: Graham et al. 2018, triangles: Falcón-Barroso et al. 2019), the error bar is the standard deviation of the values. The pink symbol shows the mean value of ellipticals (diamonds: galaxies in table B1 of Emsellem et al. 2011 with morphological type $T \leq -3.5$; triangles: Falcón-Barroso et al. 2019), the error bar is the standard deviation of the values.

similar V_{circ} , S0s are less luminous than their spiral counterparts. In the figure, we fit the data by fixing the slope of the Tully–Fisher relation to that determined for spiral galaxies. The scatter on V_{circ} , which is mostly dominated by the uncertainties in the model, does not allow us to determine any significant difference in the relations obtained for field and cluster environments. Also, the measured scatter is different at different bands; however, not all the same galaxies are used in different bands, therefore a direct comparison of the scatter is not straightforward. A number of outliers are observed in the B -band relation (NGC 4425 and NGC 4706 are overluminous with respect to the rest of S0s of similar V_{circ}) and the $3.4 \mu\text{m}$ -band relation (NGC 6548 and NGC 4429 are underluminous with respect to the rest of the S0 of similar V_{circ}). Uncertainties in photometry and distance alone do not explain these outliers; the most plausible explanation for the discrepancies is an additional source of error in their catalogue magnitudes. These outliers are excluded from the fit.

3.3.1 Calculation of circular velocity

We constructed axisymmetric 2D maps of $V_{\text{rms}} = \sqrt{V^2 + \sigma^2}$ by folding observed kinematic quantities. For the calculation of V_{rms} , we repeated the PPF analysis by fitting only velocity and velocity dispersion, not the higher moments, in order to align our analysis of the MUSE observations with the one for the ATLAS3D data. The 2D maps were rotated to align the kinematic major axis (determined in 3.1 and listed in Table 2) along the x -axis. The fit to the folded V_{rms} maps was performed using the JAM software following the same methodology adopted in Williams, Bureau & Cappellari (2009), which we summarize here.

Two different JAM models are considered. One in which the potential of the dark matter follows the light distribution (model A), and one in which the dark matter has a spherical distribution (model B). In both models, the mass density distribution is parametrized by a sum of 2D Gaussians aligned along the galaxy photometric major axis. Each Gaussian has a given surface density (in $M_{\odot} \text{pc}^{-2}$), dispersion along the major axis (in arcsec) and axial ratio.

In model A, light traces the total mass; we applied the MGE procedure on the reconstructed images obtained by integrating the MUSE datacubes over the SDSS- r bandpass; these images are

deeper than other images available in the literature for the same band. Foreground and background sources were masked to avoid biasing the fit. The light profiles of non-saturated foreground stars were used for the determination of the point-spread functions. For the galaxies in the ATLAS3D sample, we used the MGE parameters as determined by Scott et al. (2013) in the same band. In model B, we added the contribution of a dark matter halo, which was assumed spherical and following the Navarro, Frenk & White (1997) profile. We refer to Williams et al. (2009) for further details on the equations used.

The total number of free parameters in the fit is five: stellar mass-to-light ratio (M/L , which represents the total mass-to-light ratio in model A, including both luminous and dark matter), inclination (Inc), orbital anisotropy (β), total dark matter content (M_{DM} , untied from the light distribution, which is set to 0 for model A), and scale radius r_s (not considered in model A). The influence of a central supermassive black hole is negligible given the spatial resolution of the data.

For the majority of the sample galaxies, the data quality was not sufficient to separate the degeneracy between stellar and dark matter distribution. We therefore adopted best model A for the galaxies in which the M_{DM} and r_s are consistent with 0, and best model B for the remaining systems. For the ATLAS3D sample, in which model A has been chosen, we fixed the inclination as in table 1 of Cappellari et al. (2013), which lists values for the same model A.

Once the best-fitting models parameters are determined, we computed the radial profile of the circular velocity using the MGE_CIRCULAR_VELOCITY tool in the JAM software distribution.

We report in Table 2 the best-fitting parameters related to the chosen model (A or B), and the ‘flat’ value of V_{circ} , which we then use to construct the Tully–Fisher relation. We classify a circular velocity curve as ‘flat’ if the variation in the last half part of the curve is less than 15 per cent. We then compute $\langle V_{\text{circ}} \rangle$ as the average of the values of $V_{\text{circ}}(R)$ in the outermost 75 per cent of the radial range.

3.4 Mass-weighted stellar populations

We inferred the mass-weighted ages and metallicities ($[Z/H]$) of the stellar population in the sample galaxies within $1R_e$. For the

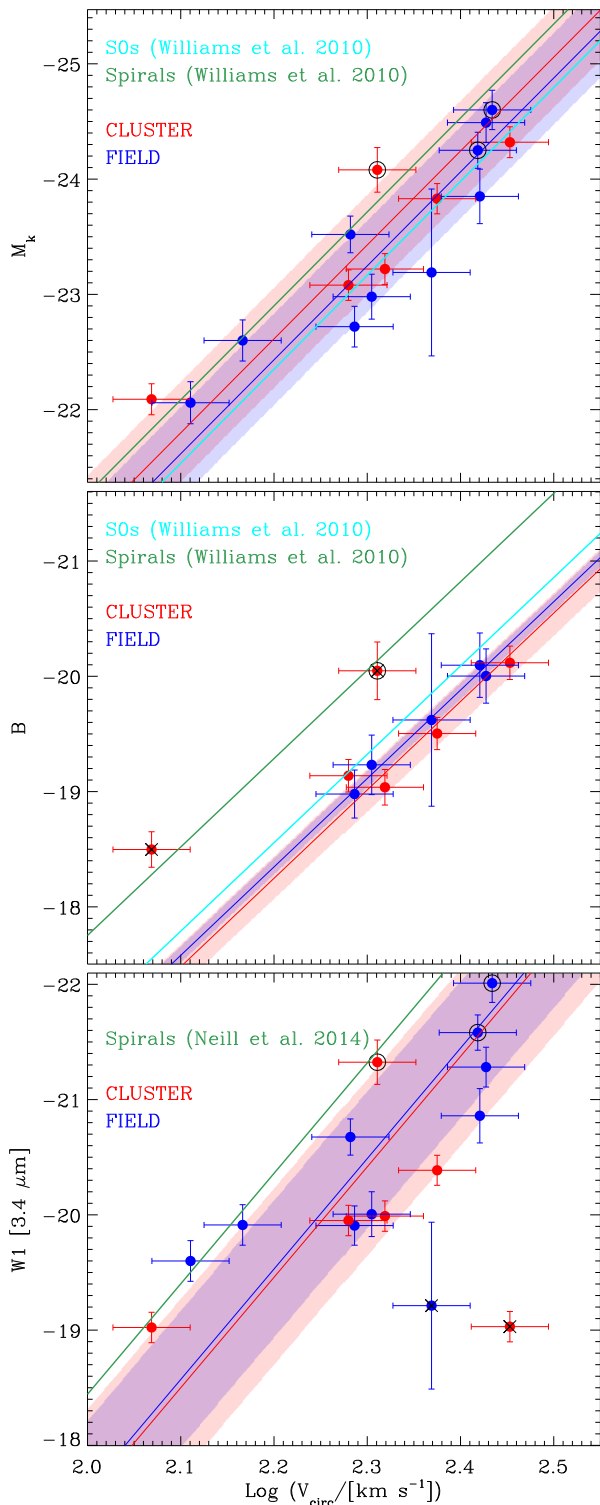


Figure 4. Tully–Fisher relation between circular velocity as determined by Jeans axisymmetric models and K -band (upper panel), B -band (middle panel), and $3.6 \mu\text{m}$ (lower panel) for field (blue) and cluster (red) galaxies. The thick blue and red lines show the linear fit to the data; shaded area indicate the 1σ error of the fit. The slope of the S0 Tully–Fisher relation is fixed to the one determined for the Spirals, whose reference is given in each panel. MUSE data are identified by a black circle. As comparison, the Tully–Fisher relations for spirals (green) and S0s (cyan) from Williams et al. (2010) and Neill et al. (2014) are shown. Outliers are identified with crosses in the plots and removed from the fit.

Table 3. Mass weighted values of age, $[Z/H]$, and t_{50} within $1 R_e$ of the sample galaxies.

GALAXY	Age	$[Z/H]$	t_{50}
(1)	[Gyr]	$[\log_{10}(Z/Z_{\odot})]$	[Gyr]
field			
PGC 004187	13.61 ± 0.54	0.02 ± 0.02	1.70 ± 0.54
IC 1989	7.04 ± 0.31	0.12 ± 0.02	4.51 ± 0.31
NGC 3546	12.35 ± 0.49	-0.11 ± 0.03	2.02 ± 0.49
PGC 045474	13.57 ± 0.21	-0.00 ± 0.03	1.72 ± 0.21
NGC 2880	11.37 ± 0.68	-0.21 ± 0.03	2.59 ± 0.68
NGC 3098	9.46 ± 0.54	-0.34 ± 0.02	4.51 ± 0.54
NGC 6149	10.50 ± 0.78	-0.40 ± 0.02	3.56 ± 0.78
NGC 6278	11.29 ± 0.80	0.03 ± 0.05	2.58 ± 0.80
NGC 6548	9.99 ± 0.91	-0.04 ± 0.02	3.50 ± 0.91
NGC 6703	12.50 ± 0.75	-0.17 ± 0.03	1.61 ± 0.76
NGC 6798	10.58 ± 0.76	-0.22 ± 0.02	3.37 ± 0.76
PGC 056772	6.39 ± 1.31	-0.48 ± 0.08	6.81 ± 1.31
cluster			
NGC 4696D	9.82 ± 0.56	-0.16 ± 0.04	4.59 ± 0.76
NGC 4706	13.06 ± 0.15	-0.20 ± 0.01	0.77 ± 0.72
PGC 043435	10.51 ± 0.39	0.06 ± 0.04	1.75 ± 0.71
PGC 043466	7.12 ± 0.46	-0.26 ± 0.03	2.06 ± 0.71
NGC 4425	8.97 ± 0.76	-0.18 ± 0.03	1.00 ± 0.70
NGC 4429	13.60 ± 0.72	-0.04 ± 0.02	2.82 ± 0.56
NGC 4435	12.36 ± 0.71	-0.18 ± 0.03	2.01 ± 0.14
NGC 4461	11.96 ± 0.71	-0.10 ± 0.02	1.96 ± 0.40
NGC 4503	13.28 ± 0.70	-0.11 ± 0.01	5.44 ± 0.46

Values in Columns 2–4 for the ATLAS3D sample are from McDermid et al. (2015).

ATLAS3D sample we used the ages and metallicities determined by McDermid et al. (2015), which were obtained by integrating the spectra within $1R_e$ and fitting them with stellar templates from the MILES library (Vazdekis et al. 2012). The mass-weighted values of age and metallicity were determined as weighted sum of the age and metallicity of the templates used (equations 1 and 2 in their paper). The weights were determined by the fitting routine PPF executed with regularization. Emission lines were fitted and removed from the spectra using GANDALF (Sarzi et al. 2006). Errors were computed by means of Monte Carlo simulations. For the MUSE sample, we adopted the same strategy as in McDermid et al. (2015), and limited our spectral interval to theirs (4750–5400 Å) to avoid systematic differences in the analysis between the two data sets. From the mass weights of the individual templates, we determined also t_{50} , the time in Gyr needed to form 50 per cent of the current-day stellar mass within $1 R_e$, following the prescriptions of section 5.1 in McDermid et al. (2015). The quantity t_{50} offers a useful proxy for the star formation time-scale.

The inferred mass-weighted values of age, $[Z/H]$, and t_{50} are listed in Table 3 and shown in Fig. 5. There is no apparent difference between the properties of field and cluster S0s. However, there is a tendency for more massive galaxies to have higher ages and metallicities, and lower t_{50} . The stronger dependency of stellar population parameters on mass suggested by Fig. 5 is not new, and is particularly evident in larger samples from the literature. McDermid et al. (2015; their fig. 13) showed that the mass-weighted stellar populations in early-type galaxies strongly depend on mass, whereas the correlation with galaxy density is weak though present (galaxies in less dense environments are younger, more metal-poor, and have a longer star formation time-scale). In Fraser-McKelvie et al. (2018) only the dependency of stellar populations with mass

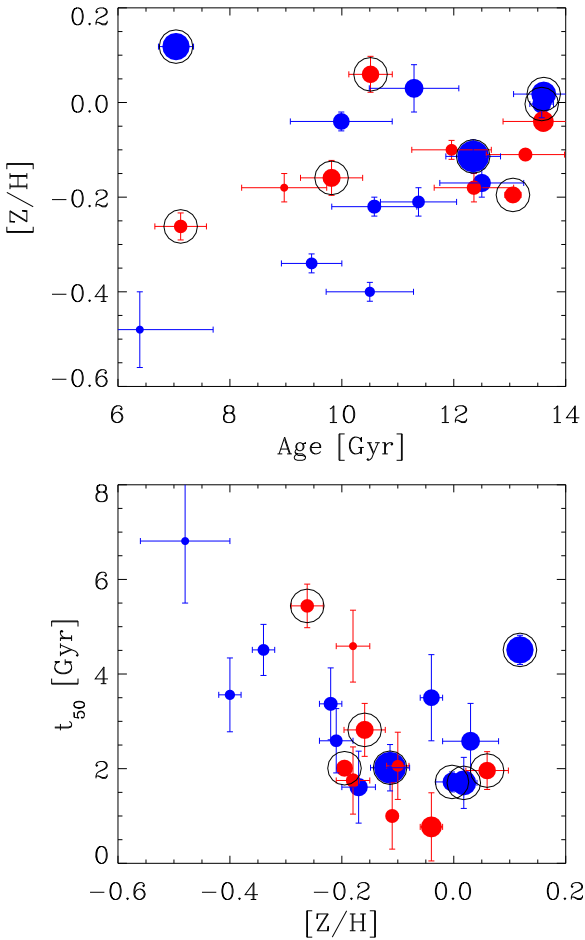


Figure 5. Mass-weighted values of age, metallicity, and t_{50} within $1R_e$. Colours indicate the field (blue) and cluster (red) galaxies; the size of the symbol is proportional to the total mass indicated in Table 2. Circles identify galaxies from the MUSE sample.

is evident (their fig. 5), and no dependency on environment is seen (their fig. 9, although they show only the results for the bulge-dominated region).

In a forthcoming paper (Johnston et al, in preparation), we will investigate the 2D maps of the stellar populations, exploiting the full wavelength range of the MUSE sample, and separating the contribution of young and old components, and of the disc and the bulge by means of spectral decomposition analysis (e.g. Coccato et al. 2011, 2018; Johnston et al. 2012, 2017), to determine if there are any subtler dependencies on environment.

4 DISCUSSION AND CONCLUSIONS

We have investigated the kinematics and stellar population properties in a sample of 21 lenticular galaxies that reside in two extremely different environments (field and cluster) with the aim of detecting any dependence on environment in their formation and evolution. In particular, we compared the radial profile of the ratio between stellar rotation and velocity dispersion (V_{rot}/σ), and the λ parameter (a proxy for the specific angular momentum), the M_k , B , and $3.4 \mu\text{m}$ Tully–Fisher relations, and the integrated mass-weighted age, metallicity, and half-mass formation time-scale t_{50} at $1 R_e$ in 12 field and 9 cluster S0s.

The kinematic analysis revealed (at a $\sim 1.5\sigma$ level) that S0s in the field tend to have lower $V/\sigma(R_e)$ and $\lambda(R_e)$ than their cluster counterpart. In the Tully–Fisher relations, however, we do not find any quantifiable difference with environment.

4.1 Effects of observational biases

Before embarking on the interpretation of these results, we investigate the effects of observational biases in our sample selection.

4.1.1 Morphological mis-classification

The morphological distinction between elliptical and lenticular galaxies could be ambiguous, especially if the object is nearly face-on. As discussed in Section 2, eight galaxies in the ATLAS3D sample, classified as S0 according to LEDA, were indicated as ‘pure’ Sersic objects by Krajnović et al. (2013). They are marked with an asterisk in the last column of Table 2. However, our photometric decomposition of their 2MASS images revealed the presence of a prominent disc component in all cases. In order to test our results against this possible contamination, we repeated the kinematic analysis after removing these eight galaxies from the sample. We found that this test does not substantially change the results: the largest distinction between the kinematics is still observed when splitting the sample into field and cluster, although the significance moderately decreases due to the smaller sample statistics (see Figs 7 and 8). Regarding the Tully–Fisher relation, the removal of these eight galaxies would leave in only two galaxies with a flat V_{circ} profile in the field sample, so a sensible comparison with cluster galaxies is not possible. We also explored the extreme and unlikely case of 100 per cent contamination, in which *all* the sample galaxies are either spirals or ellipticals. From the measured values of $\lambda(< R_e)$ of spirals and ellipticals in Graham et al. (2018) and Emsellem et al. (2011), we created 1000 mock random catalogues with 12 randomly selected galaxies to represent the field population and 9 randomly selected galaxies to represent the cluster population. We made sure not to have duplicates in each mock catalogue, and that all the mock catalogues are unique. We selected only galaxies with $\lambda(< R_e) < 0.7$ as in our observations. We then computed the mean $\lambda(< R_e)$ and its error for each of the field and cluster mock catalogues and check the significance in the difference between λ of field and cluster galaxies. We found that in only $\lesssim 10$ per cent of the simulations the difference between the average values of λ_{FIELD} and λ_{CLUSTER} is at least as significant as our results (i.e. at 1.43σ level, in the sense that the 1σ error bars associated to λ_{FIELD} and λ_{CLUSTER} touch each other if multiplied by 1.43). This fraction is small, but not insignificant; therefore, a larger sample is desirable to confirm the results of this pilot study.

4.1.2 Other parameters

As evident from Fig. 1, there is not a fully homogeneous mass distribution, luminosity, or bulge-to-total light ratio between field and cluster galaxies. In addition, galaxy properties may depend on inclination and distance from the cluster centre, which would require a much larger sample to marginalize out. Therefore, we might be seeing the effects of the contamination from other parameters rather than the environment.

For example, a mass dependency would be indeed consistent with the recent results of Fraser-McKelvie et al. (2018), in which they clearly show a bimodal dependency of stellar population properties

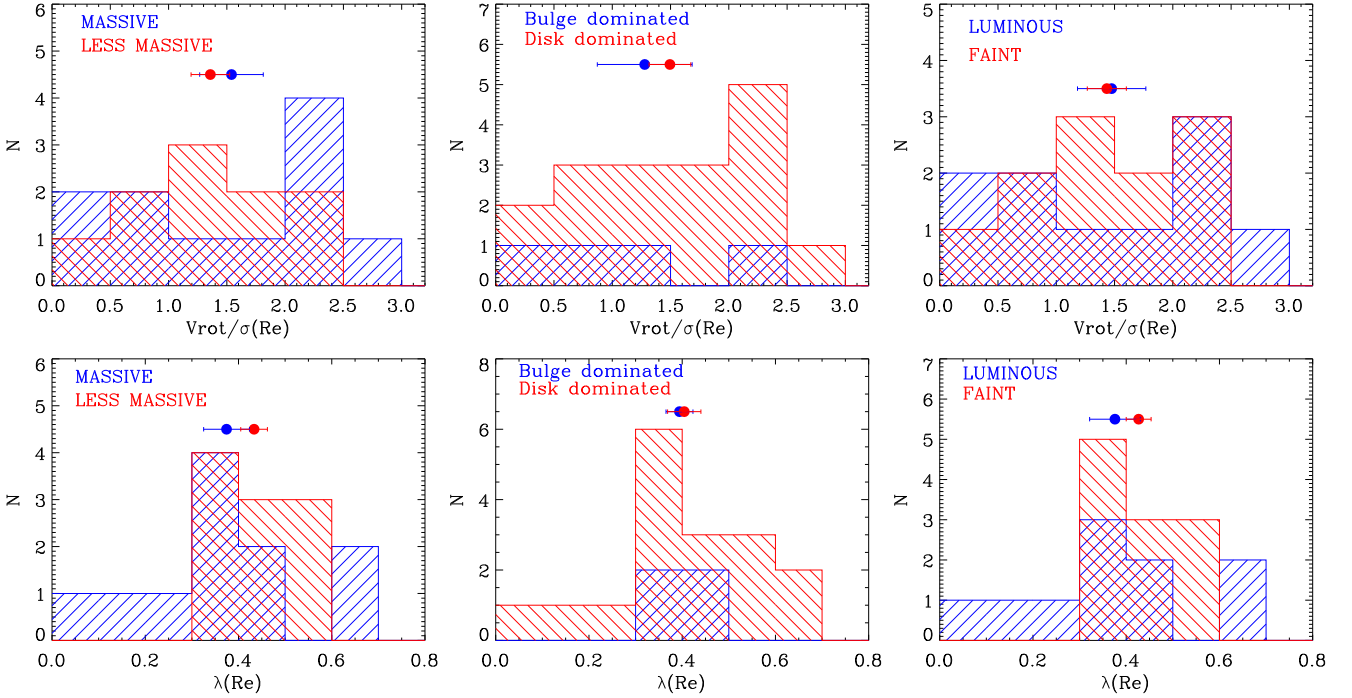


Figure 6. Comparison between the values of profiles of V/σ (upper panel) and the proxy for specific angular momentum λ (lower panel) at 1 effective radius of the sample galaxies. Galaxies are divided into massive and less massive (left-hand panels), bulge dominated and disc dominated (central panels), and luminous and faint (right-hand panels). The threshold values used to separate the sample are total mass = $6 \times 10^{10} M_{\odot}$, bulge-to-total ratio = 0.5, $M_k = -23.68$ mag, i.e. the median of the M_k magnitudes. Same results are obtained using $W1 = -20.48$, i.e. the median of the $W1$ magnitudes.

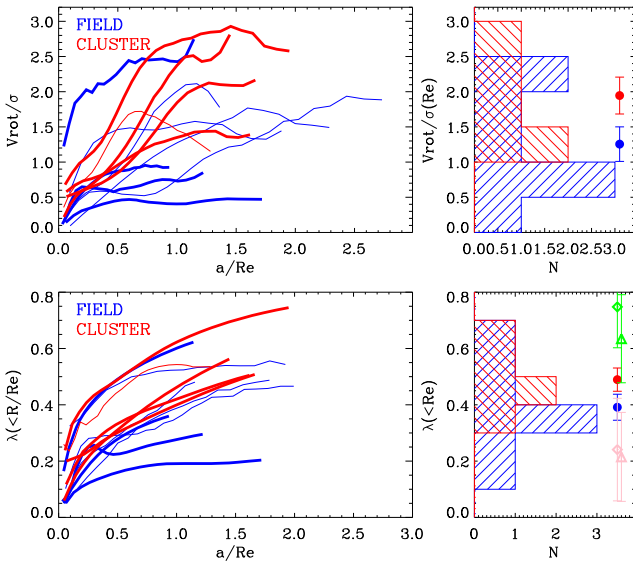


Figure 7. As Figs 2 (upper panels) and 3 (lower panels) but after having removed the eight galaxies marked with asterisks in Table 2, which have uncertain morphological classification. Green and pink symbols represent the mean values of spirals and ellipticals, respectively, as in Figs 2 and 3.

with mass. Their results indicate that mass is the main driver for the formation of lenticular galaxies. According to their interpretation, massive lenticulars mostly form by morphological or inside-out quenching (stellar mass higher than $6 \times 10^{10} M_{\odot}$), whereas less massive lenticulars mostly form by the fading of a progenitor spiral galaxy.

In order to evaluate possible selection biases in our results, we repeated the analysis of Sections 3.2 and 3.1 splitting the sample into massive versus less massive (with the division placed at $6 \times 10^{10} M_{\odot}$), into bulge-dominated versus disc dominated (split at a disc-to-total luminosity ratio $D/T = 0.5$), and into luminous versus faint galaxies (either side of the median value of K -band magnitudes (M_k) = -23.83). Results are shown in Fig. 6. It is evident that the kinematic properties of the galaxies do not differ when split in these ways. Differences in the distribution of radial profiles and their values at $1 R_e$ are less significant than when the sample is divided by environment.

Thus, this kinematic analysis indicates that mass is not the main driver for different formation scenarios; this may seem at a first glance to be at odds with the recent findings by Fraser-McKelvie et al. (2018). However, one should note that we cover a significantly different range of masses and environments in this work. Our sample galaxies have masses higher than $\log(M/M_{\odot}) = 10.2$, so all belong to the upper mass range of Fraser-McKelvie et al. (2018), where mass-driven differences between their properties are expected to be less evident. Contrastingly, by construction our sample spans a much wider range of environments than Fraser-McKelvie et al. (2018), so it should be more sensitive to any dependency there. Moreover, their study was mainly focused on stellar population, so it did not explore the kinematic differences uncovered here.

Interestingly, if we consider the results of the stellar population analysis, we reach a somewhat different conclusion. The size of the symbols in Fig. 5 are proportional to the log of the total mass. There does seem to be at least some correlation with mass between points in Fig. 5, but not with environment. The massive galaxies tend to concentrate in the region of higher $[Z/H]$ and age, and low t_{50} , consistent with the findings of McDermid et al. (2015)

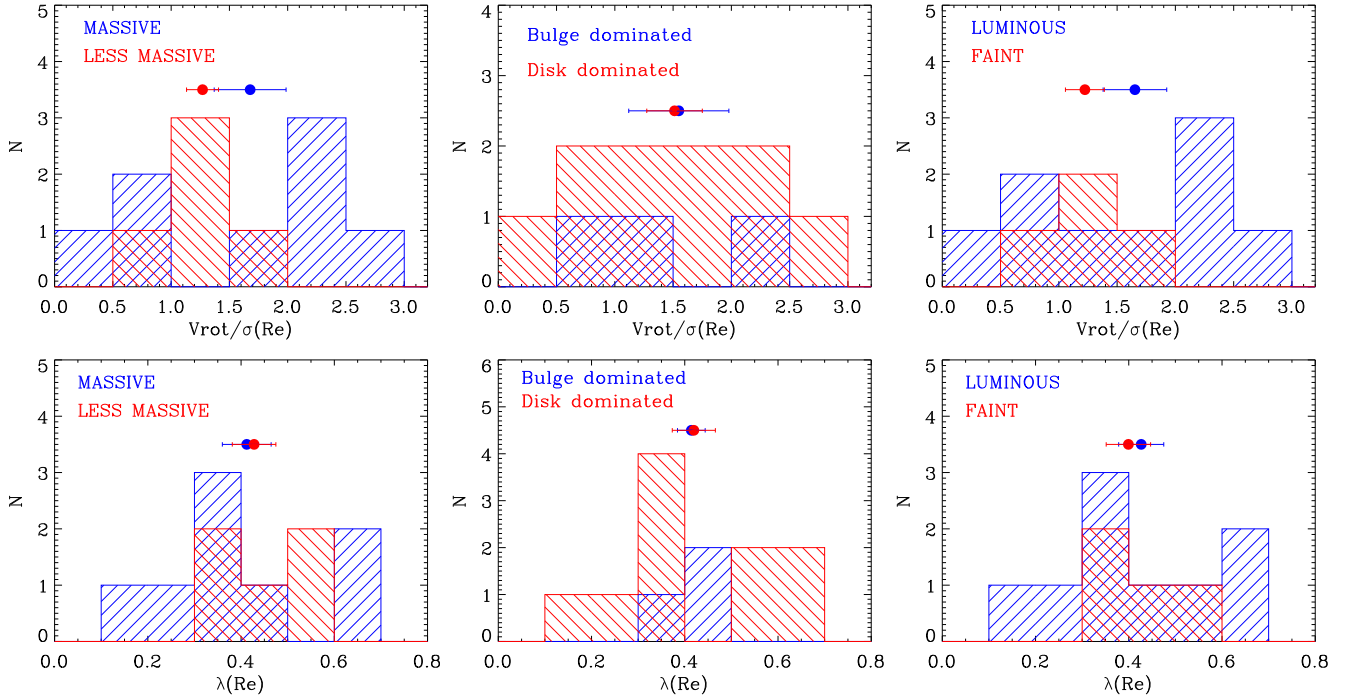


Figure 8. As Fig 6, but after having removed the eight galaxies marked with asterisks in Table 2, which have uncertain morphological classification.

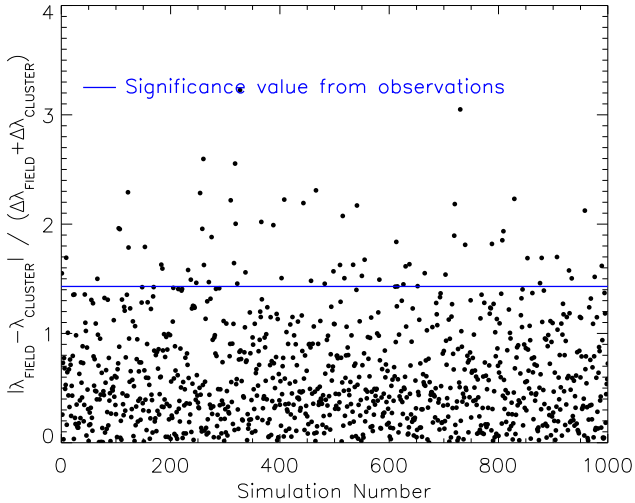


Figure 9. Significance of the measured difference between $\lambda(< R_e)$ for field and cluster galaxies, in the extreme assumption that all our sample is totally contaminated by spirals and ellipticals. The blue line at 1.43 represent the significance of our pilot project, in the sense that our measurements of $\lambda(< R_e)$ for the field and cluster sample agree with each other if we multiply the error bars by 1.43. 7 per cent of the simulations are above this line.

and Fraser-McKelvie et al. (2018), and also as expected from the broader mass–metallicity relation in galaxies (e.g. Gallazzi et al. 2006).

Although our preliminary results suggest that environment shapes the kinematic properties of lenticular galaxies, whereas mass shapes the stellar populations, one would not expect the effects of mass and environment to be totally independent of each other. Indeed, merging and stripping processes can change the total mass of a galaxy and its morphology. Moreover, the time-scale of star

formation (which is known to correlate with mass; e.g. Thomas et al. 2005; McDermid et al. 2015) or quenching mechanisms (that can be related to the environment; e.g. Davies et al. 2019) also play a role, and suggest that the reality must be a more complex interplay between mass and environment in determining the global properties of a galaxy.

4.2 Formation scenarios

A number of scenarios have been proposed to explain the formation of S0s. As mentioned in the introduction, one can group them into two main categories: the first category involves galaxy interaction (e.g. mergers, tidal interactions); the second involves changes in the gas content (e.g. ram-pressure stripping, starvation).

Interactions in general tend to destroy the stellar disc leading to less rotationally supported systems or to an elliptical galaxy. We might therefore expect that S0s formed through this channel would have significantly lower V_{rot}/σ and λ than their spiral counterparts of similar mass (e.g. Bournaud et al. 2005; Bekki & Couch 2011; Querejeta et al. 2015; Lagos et al. 2017). Also, merger remnants would be systematically shifted to lower V_{circ} for the same mass right after their formation, but they would then move to the local Tully–Fisher relation after 4–7 Gyr of passive evolution. On the other hand, if a large amount of gas is involved in the merger, then new stars in rapidly rotating structures can boost V_{rot}/σ . However, simulations shows that such enhancement affects only the very central regions in the majority of cases (e.g. Lagos et al. 2018). In general, the modification of the gas content has less effect on the dynamical structure of the galaxy, so the resulting S0s would be expected to have the dynamical structure of their spiral progenitors.

Our results point in the direction that the field environment is dominated by the merger processes that decrease V_{rot}/σ and λ . The fact that we do not observe systematic differences between the

Tully–Fisher relations of S0s in different environments (at least within the scatter of our measurements) suggests that such mergers occurred are at high redshift, and then the merger remnant has evolved passively and in isolation for 4–7 Gyrs (Tapia et al. 2017) moving back to the local Tully–Fisher S0s relation. On the other hand, dense environments seem to be dominated by the stripping processes that change V_{rot}/σ and λ less dramatically. We clarify that here we consider a process to be ‘dominating’ only with respect to the other mechanisms that contribute to form S0s, not with respect to all the mechanisms that can occur in a given environment and that can change, for example the morphological type of an S0 galaxy.

From a qualitative point of view, the kinematic results are consistent with the idea that (i) isolated S0 galaxies are the end product of past mergers resulting in a stellar component ‘dynamically hotter’ than cluster S0s, and (ii) cluster S0s are formed through processes that involve the rapid consumption or removal of gas resulting in a stellar component ‘dynamically colder’ than field S0s. S0s in cluster could therefore be ‘faded’ spirals, although a small contribution from minor mergers cannot be ruled out (at least in some cases) to explain why the mean $\lambda(R_e)$ of cluster S0 is not as high as those of spirals. Also, the effect of the cluster environment is more directed to the gas content (e.g. ram pressure stripping), consistent with the fact that the majority of our cluster S0s have even less gas in their central regions than S0s in the field (see Table 1).

4.3 Summary and future perspective

We have studied the properties of a sample of lenticular galaxies in the field and in clusters, with the aim of investigating the influence of the environment on their formation processes. Even with the relatively small number of galaxies in our sample, we find clear indications that galaxies in the field are generally more pressure supported than galaxies in the cluster, suggesting that galaxy interactions (mergers, tidal interactions) play a more major role in the field in shaping these systems. This scenario is also reflected in the fact that the specific angular momentum of field S0s is closer to the range of values of elliptical galaxies, which are believed to form mainly via mergers. On the other hand, the kinematic properties of S0s in the cluster are closer to their spiral counterparts, indicating that processes involving the modification of the gas content (stripping, starvation, rapid star formation) are dominant in the cluster environment.

Mass or luminosity do not seem to be the main drivers of these kinematic properties; however, in our study we have only considered galaxies with total mass $\log(M/M_{\odot}) > 10.2$, so we do not cover the faint end of the S0s population. By contrast, the properties of the stellar populations (age, metallicity, t_{50}) are more correlated with mass than with environment, consistent with previous studies that note the correlation between, for example mass and metallicity (e.g. Thomas et al. 2005).

One of the main cautionary aspects of this pilot study is the sample size, which is not entirely representative of the S0 galaxy population nor is it uniform in parameter distribution. A larger sample is therefore highly recommended to obtain unequivocal conclusions that either confirm or negate the findings and interpretation presented here. Notwithstanding this limitation, this work highlights that environment does seem to be an important parameter in shaping the kinematic properties of lenticular galaxies. While the previous study by Fraser-McKelvie et al. (2018) indicated stellar mass as the main driver for dictating the formation mechanism of S0s, a direct comparison between their work and this analysis is

difficult to make at this stage because of the differences in mass range end environment explored, and because the previous work focused less on the kinematic signatures.

In summary, the results and limitations of this pilot study argue strongly for a much larger survey of S0s that spans a wide range of both masses and environments, and investigates the signatures of both kinematics and stellar populations in seeking to establish formation mechanisms. This approach will be the key to disentangling the contributions of mass and environment to dictating the channels by which lenticular galaxies form.

ACKNOWLEDGEMENTS

This research is based on observations collected at the European Southern Observatory under ESO programme 096.B-0325 and it has made use of the services of the ESO Science Archive Facility. This publication makes use of data products from the Wide-field Infrared Survey Explorer, which is a joint project of the University of California, Los Angeles, and the Jet Propulsion Laboratory/California Institute of Technology, funded by the National Aeronautics and Space Administration. This publication makes use of data products from the NASA/IPAC Extragalactic Database (NED), which is operated by the Jet Propulsion Laboratory, California Institute of Technology, under contract with the National Aeronautics and Space Administration. This publication makes use of data products from the Two Micron All Sky Survey, which is a joint project of the University of Massachusetts and the Infrared Processing and Analysis Center/California Institute of Technology, funded by the National Aeronautics and Space Administration and the National Science Foundation.

YJ acknowledges financial support from CONICYT PAI (Concurso Nacional de Inserción en la Academia 2017), No. 79170132 and FONDECYT Iniciación 2018 No. 11180558. EJ acknowledges support from FONDECYT Postdoctoral Fellowship Project No. 3180557. BRP acknowledges support from the Spanish Ministry of Economy and Competitiveness through grant ESP2017-83197. AC acknowledges support from PNP/CAPES. YKS acknowledges support from the National Research Foundation of Korea (NRF) grant funded by the Ministry of Science, ICT & Future Planning (No. NRF-2019R1C1C1010279). ACS acknowledges funding from the Brazilian agencies *Conselho Nacional de Desenvolvimento Científico e Tecnológico* (CNPq) and the Rio Grande do Sul Research Foundation (FAPERGS) through grants CNPq-403580/2016-1, CNPq-310845/2015-7, PqG/FAPERGS-17/2551-0001. We wish to thank the referee, R. Peletier, for constructive feedback.

REFERENCES

- Aguerrí J. A. L., 2012, *Adv. Astron.*, 2012, 382674
 Arnold J. A., Romanowsky A. J., Brodie J. P., Chomiuk L., Spitler L. R., Strader J., Benson A. J., Forbes D. A., 2011, *ApJ*, 736, L26
 Bacon R. et al., 2010, *Proc. SPIE Conf. Ser. Vol. 7735*, Ground-based and Airborne Instrumentation for Astronomy III. SPIE, California, p. 773508
 Bekki K., Couch W. J., 2011, *MNRAS*, 415, 1783
 Bellstedt S., Forbes D. A., Foster C., Romanowsky A. J., Brodie J. P., Pastorello N., Alabi A., Villaume A., 2017, *MNRAS*, 467, 4540
 Bernardi M., Shankar F., Hyde J. B., Mei S., Marulli F., Sheth R. K., 2010, *MNRAS*, 404, 2087
 Binney J., Tremaine S., 2008, *Galactic Dynamics*. 2nd edn., Princeton Univ. Press, Princeton
 Bournaud F., Jog C. J., Combes F., 2005, *A&A*, 437, 69
 Cappellari M. et al., 2011a, *MNRAS*, 413, 813

- Cappellari M. et al., 2011b, *MNRAS*, 416, 1680
 Cappellari M. et al., 2013, *MNRAS*, 432, 1709
 Cappellari M., 2002, *MNRAS*, 333, 400
 Cappellari M., 2008, *MNRAS*, 390, 71
 Cappellari M., Copin Y., 2003, *MNRAS*, 342, 345
 Cappellari M., Emsellem E., 2004, *PASP*, 116, 138
 Chies-Santos A. L., Larsen S. S., Kuntschner H., Anders P., Wehner E. M., Strader J., Brodie J. P., Santos J. F. C., 2011, *A&A*, 525, A20
 Christlein D., Zabludoff A. I., 2004, *ApJ*, 616, 192
 Coccato L., Morelli L., Corsini E. M., Buson L., Pizzella A., Vergani D., Bertola F., 2011, *MNRAS*, 412, L113
 Coccato L., Fabricius M. H., Saglia R. P., Bender R., Erwin P., Drory N., Morelli L., 2018, *MNRAS*, 477, 1958
 Cortesi A. et al., 2013, *MNRAS*, 432, 1010
 Courtois H. M., Tully R. B., Héraudeau P., 2011, *MNRAS*, 415, 1935
 Davies L. J. M. et al., 2019, *MNRAS*, 483, 5444
 de Vaucouleurs G., de Vaucouleurs A., Corwin Jr. H. G., Buta R. J., Paturel G., Fouqué P., 1991, Third Reference Catalogue of Bright Galaxies. Volume I: Explanations and references. Volume II: Data for galaxies between 0^h and 12^h . Volume III: Data for galaxies between 12^h and 24^h . Springer, New York
 Dressler A. et al., 1997, *ApJ*, 490, 577
 Dressler A., 1980, *ApJ*, 236, 351
 Eliche-Moral M. C., González-García A. C., Aguerri J. A. L., Gallego J., Zamorano J., Balcells M., Prieto M., 2012, *A&A*, 547, A48
 Eliche-Moral M. C., González-García A. C., Aguerri J. A. L., Gallego J., Zamorano J., Balcells M., Prieto M., 2013, *A&A*, 552, A67
 Emsellem E. et al., 2007, *MNRAS*, 379, 401
 Emsellem E. et al., 2011, *MNRAS*, 414, 888
 Falcón-Barroso J. et al., 2019, *A&A*, 632, A59
 Fraser-McKelvie A., Aragón-Salamanca A., Merrifield M., Tabor M., Bernardi M., Drory N., Parikh T., Argudo-Fernández M., 2018, *MNRAS*, 481, 5580
 Freudling W., Romaniello M., Bramich D. M., Ballester P., Forchi V., García-Dabó C. E., Moehler S., Neeser M. J., 2013, *A&A*, 559, A96
 Gallazzi A., Charlot S., Brinchmann J., White S. D. M., 2006, *MNRAS*, 370, 1106
 Graham M. T. et al., 2018, *MNRAS*, 477, 4711
 Gunn J. E., Gott J. R., III, 1972, *ApJ*, 176, 1
 Jaffé Y. L. et al., 2011, *MNRAS*, 417, 1996
 Jaffé Y. L. et al., 2014, *MNRAS*, 440, 3491
 Jerjen H., Dressler A., 1997, *A&AS*, 124, 1
 Johnston E. J. et al., 2017, *MNRAS*, 465, 2317
 Johnston E. J., Aragón-Salamanca A., Merrifield M. R., Bedregal A. G., 2012, *MNRAS*, 422, 2590
 Johnston E. J., Aragón-Salamanca A., Merrifield M. R., 2014, *MNRAS*, 441, 333
 Karachentseva V. E., Mitronova S. N., Melnyk O. V., Karachentsev I. D., 2010, *Astrophys. Bull.*, 65, 1
 Katkov I. Y., Sil'chenko O. K., Afanasiev V. L., 2014, *MNRAS*, 438, 2798
 Krajnović D. et al., 2013, *MNRAS*, 432, 1768
 Krajnović D., Cappellari M., de Zeeuw P. T., Copin Y., 2006, *MNRAS*, 366, 787
 Lagos C. d. P. et al., 2018, *MNRAS*, 473, 4956
 Lagos C. d. P., Theuns T., Stevens A. R. H., Cortese L., Padilla N. D., Davis T. A., Contreras S., Croton D., 2017, *MNRAS*, 464, 3850
 Lee S.-Y., Chung C., Yoon S.-J., 2019, *ApJS*, 240, 2
 Leung G. Y. C. et al., 2018, *MNRAS*, 477, 254
 McDermid R. M. et al., 2015, *MNRAS*, 448, 3484
 Merluzzi P., Busarello G., Dopita M. A., Haines C. P., Steinhauser D., Bourdin H., Mazzotta P., 2016, *MNRAS*, 460, 3345
 Mishra P. K., Wadadekar Y., Barway S., 2018, *MNRAS*, 478, 351
 Navarro J. F., Frenk C. S., White S. D. M., 1997, *ApJ*, 490, 493
 Neill J. D., Seibert M., Tully R. B., Courtois H., Sorce J. G., Jarrett T. H., Scowcroft V., Masci F. J., 2014, *ApJ*, 792, 129
 Peng C. Y., Ho L. C., Impey C. D., Rix H.-W., 2002, *AJ*, 124, 266
 Poggianti B. M. et al., 2009, *ApJ*, 697, L137
 Ponman T. J., Allan D. J., Jones L. R., Merrifield M., McHardy I. M., Lehto H. J., Luppino G. A., 1994, *Nature*, 369, 462
 Querejeta M. et al., 2015, *A&A*, 579, L2
 Rizzo F., Fraternali F., Iorio G., 2018, *MNRAS*, 476, 2137
 Rodríguez Del Pino B., Bamford S. P., Aragón-Salamanca A., Milvang-Jensen B., Merrifield M. R., Balcells M., 2014, *MNRAS*, 438, 1038
 Saha K., Cortesi A., 2018, *ApJ*, 862, L12
 Sarzi M. et al., 2006, *MNRAS*, 366, 1151
 Scott N. et al., 2013, *MNRAS*, 432, 1894
 Skrutskie M. F. et al., 2006, *AJ*, 131, 1163
 Sorce J. G. et al., 2013, *ApJ*, 765, 94
 Sorce J. G., Courtois H. M., Tully R. B., 2012, *AJ*, 144, 133
 Soto K. T., Lilly S. J., Bacon R., Richard J., Conseil S., 2016, *MNRAS*, 458, 3210
 Steinhauser D., Haider M., Kapferer W., Schindler S., 2012, *A&A*, 544, A54
 Tapia T., Eliche-Moral M. C., Aceves H., Rodríguez-Pérez C., Borlaff A., Querejeta M., 2017, *A&A*, 604, A105
 Thomas D., Maraston C., Bender R., Mendes de Oliveira C., 2005, *ApJ*, 621, 673
 Tully R. B., Fisher J. R., 1977, *A&A*, 54, 661
 Tully R. B., Shaya E. J., Pierce M. J., 1992, *ApJS*, 80, 479
 van den Berg M., Hong J. S., Grindlay J. E., 2009, *ApJ*, 700, 1702
 Vazdekis A., Ricciardelli E., Cenarro A. J., Rivero-González J. G., Díaz-García L. A., Falcón-Barroso J., 2012, *MNRAS*, 424, 157
 Vollmer B., 2013, The Influence of Environment on Galaxy Evolution. Springer, Berlin, p. 207
 Weillbacher P. M., Streicher O., Urrutia T., Jarno A., Pécontal-Rousset A., Bacon R., Böhm P., 2012, Proc. SPIE Conf. Ser. Vol. 8451, Software and Cyberinfrastructure for Astronomy II. SPIE, Amsterdams, p. 84510B
 Williams M. J., Bureau M., Cappellari M., 2009, *MNRAS*, 400, 1665
 Williams M. J., Bureau M., Cappellari M., 2010, *MNRAS*, 409, 1330
 Wright E. L. et al., 2010, *AJ*, 140, 1868

APPENDIX A: MEASURED KINEMATIC MAPS OF THE MUSE LENTICULAR SAMPLE

In this section we show the 2D stellar kinematic maps of the sample galaxies observed with MUSE and discuss the individual galaxies (Figs A1–A2). We also show the 2D maps of the ionized-gas velocity only for those galaxies that have a significant detection in $H\alpha$ (Fig. A3). We refer the reader to Section 2.1 for further information about the data reduction and the measurements.

PGC 0044187 – 2MIG 131. The stellar velocity field is regular and reaches an observed peak-to-peak rotation amplitude of ~ 300 km s $^{-1}$. The stellar velocity dispersion has a central peak of ~ 300 km s $^{-1}$ and then it decrease down to ~ 150 km s $^{-1}$ at ~ 5 arcsec from the centre and stay relatively flat.

IC 1989 – 2MIG 445. The stellar velocity field is regular and reaches an observed peak-to-peak rotation amplitude of ~ 200 km s $^{-1}$. The velocity dispersion ranges between 100 and 150 km s $^{-1}$ except in the central region, which is characterized by an elongated structure aligned along the kinematic major axis. This structure has a counter-part in the rotation map. A discontinuity in the kinematic maps is observed at ~ 10 arcsec on the North-West side, along the major axis. It is most likely caused by the presence of a dwarf companion in projection along the line of sight. This region, approximately 5 arcsec wide, was removed in the derivation of λ , V/σ , and V_{circ} . The fit of ionized-gas emission lines also fails in this contaminated area.

NGC 3546 – 2MIG 1546. The stellar velocity field is regular and reaches an observed peak-to-peak rotation amplitude of ~ 350 km s $^{-1}$. The stellar velocity dispersion has a central peak of ~ 220 km s $^{-1}$ and then it decrease down to ~ 100 km s $^{-1}$ at ~ 10 arcsec from the centre and stay relatively flat. The ionized-gas component is

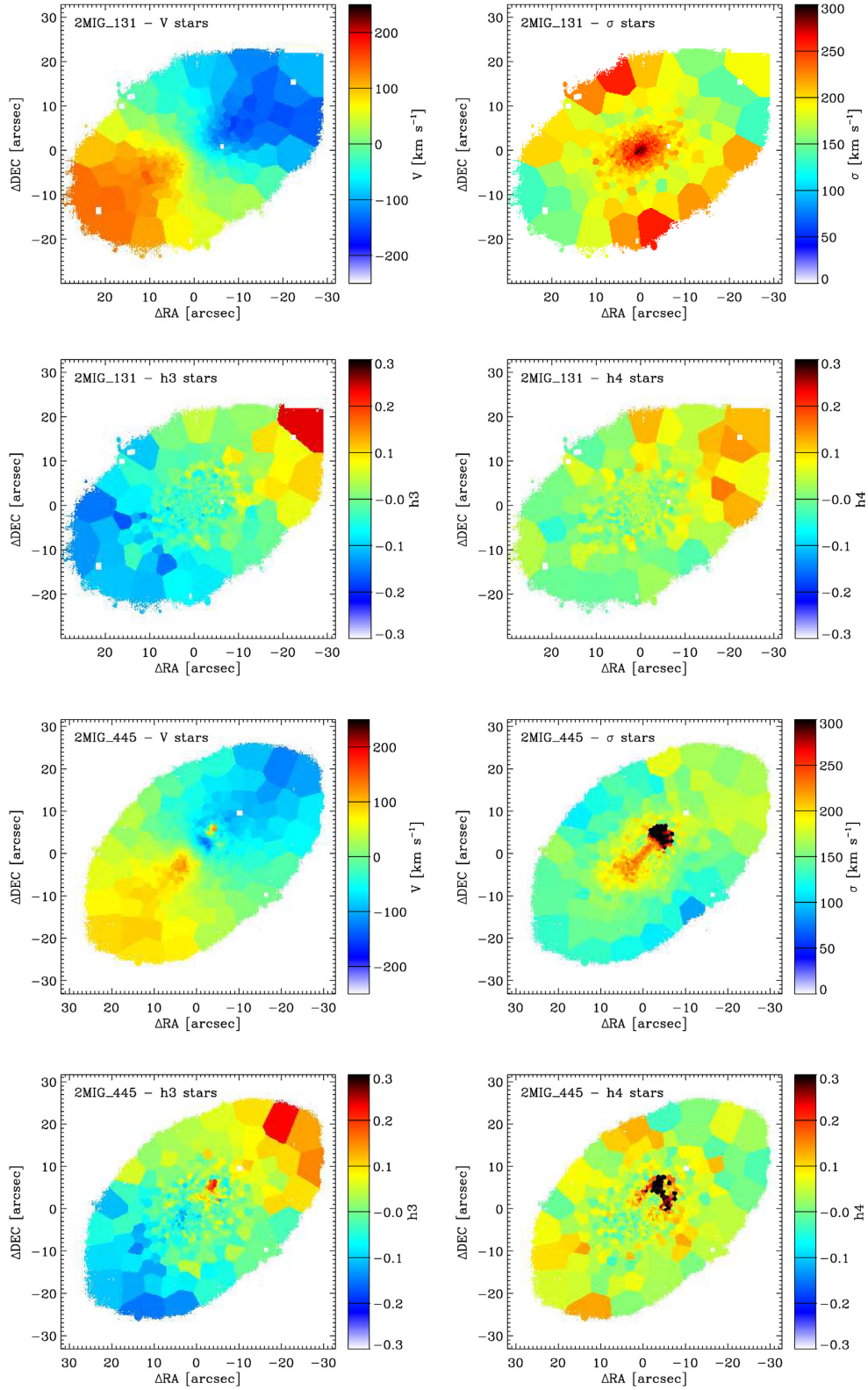


Figure A1. Velocity, velocity dispersion, $h3$, and $h4$ maps for the MUSE sample of Isolated galaxies.

extended towards the entire field of view and rotates regularly with a peak-to-peak rotation amplitude of $\sim 500 \text{ km s}^{-1}$.

PGC 045474 – 2MIG 1814. The stellar velocity field is regular and reaches an observed peak-to-peak rotation amplitude of

$\sim 300 \text{ km s}^{-1}$. The stellar velocity dispersion has a central peak of $\sim 250 \text{ km s}^{-1}$ and then it decrease down to $\sim 150 \text{ km s}^{-1}$ at $\sim 30 \text{ arcsec}$ from the centre. The ionized-gas component is extended towards the entire field of view. It shows a disc-like regular rotation

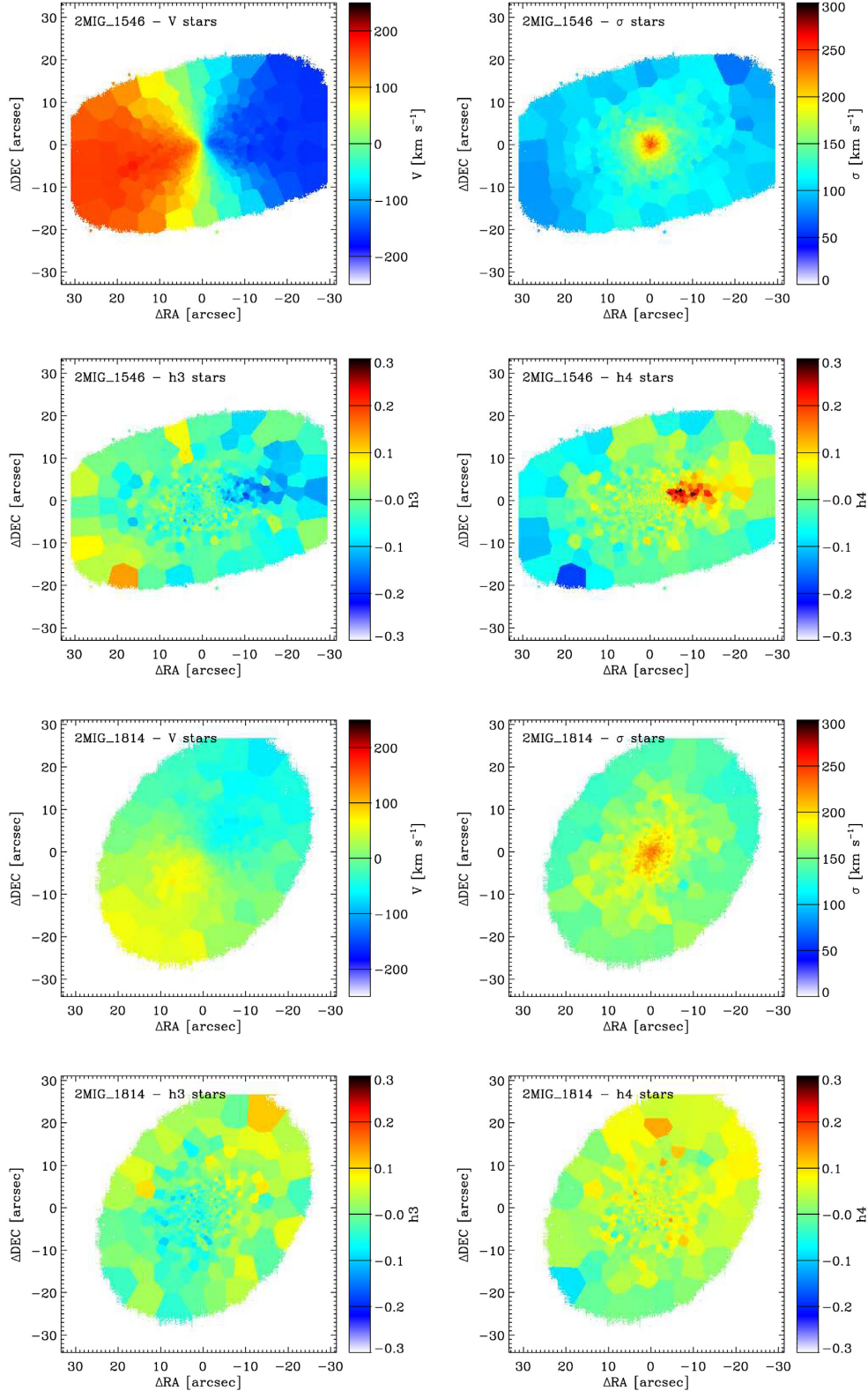


Figure A1. –continue

in the central $\sim 10 \text{ arcsec}$ and then it shows an irregular, outflow-like field, with line-of-sight velocity of $\sim 200 \text{ km s}^{-1}$ with respect to the system centre in the South-West region.

NGC 4696D – CCC 43. The stellar velocity field is regular and reaches an observed peak-to-peak rotation amplitude of $\sim 200 \text{ km}$

s^{-1} . The stellar velocity dispersion has a central peak of $\sim 170 \text{ km s}^{-1}$ and then it decrease down to $\sim 50 \text{ km s}^{-1}$ at $\sim 30 \text{ arcsec}$ from the centre.

NGC 4706 – CCC 122. The stellar velocity field is regular and reaches an observed peak-to-peak rotation amplitude of $\sim 400 \text{ km}$

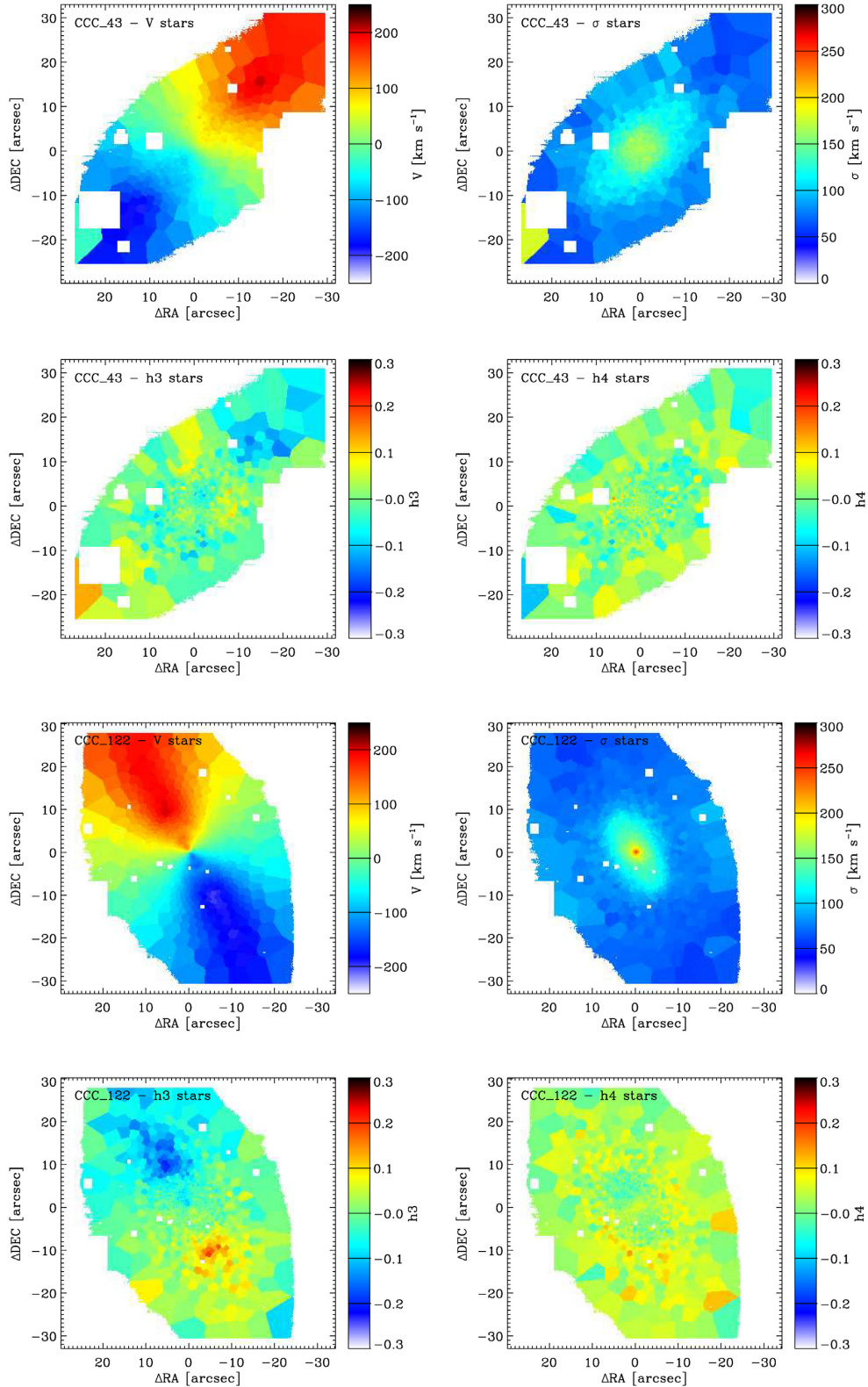


Figure A2. Stellar velocity, velocity dispersion, $h3$, and $h4$ maps for the MUSE sample of Cluster galaxies.

s^{-1} . The stellar velocity dispersion has a central peak of ~ 250 $km s^{-1}$ and then it rapidly decrease down to ~ 50 $km s^{-1}$ at ~ 30 arcsec from the centre. Ionized-gas is detected in the innermost ~ 10 arcsec and shows a disc-like rotation of ~ 400 $km s^{-1}$ (peak-to-peak).

PGC 043435 – CCC 137. The stellar velocity field is regular and reaches an observed peak-to-peak rotation amplitude of ~ 400 $km s^{-1}$. The stellar velocity dispersion has a central peak of ~ 220 $km s^{-1}$ and then it rapidly decrease down to ~ 50 $km s^{-1}$ at ~ 30 arcsec from the centre.

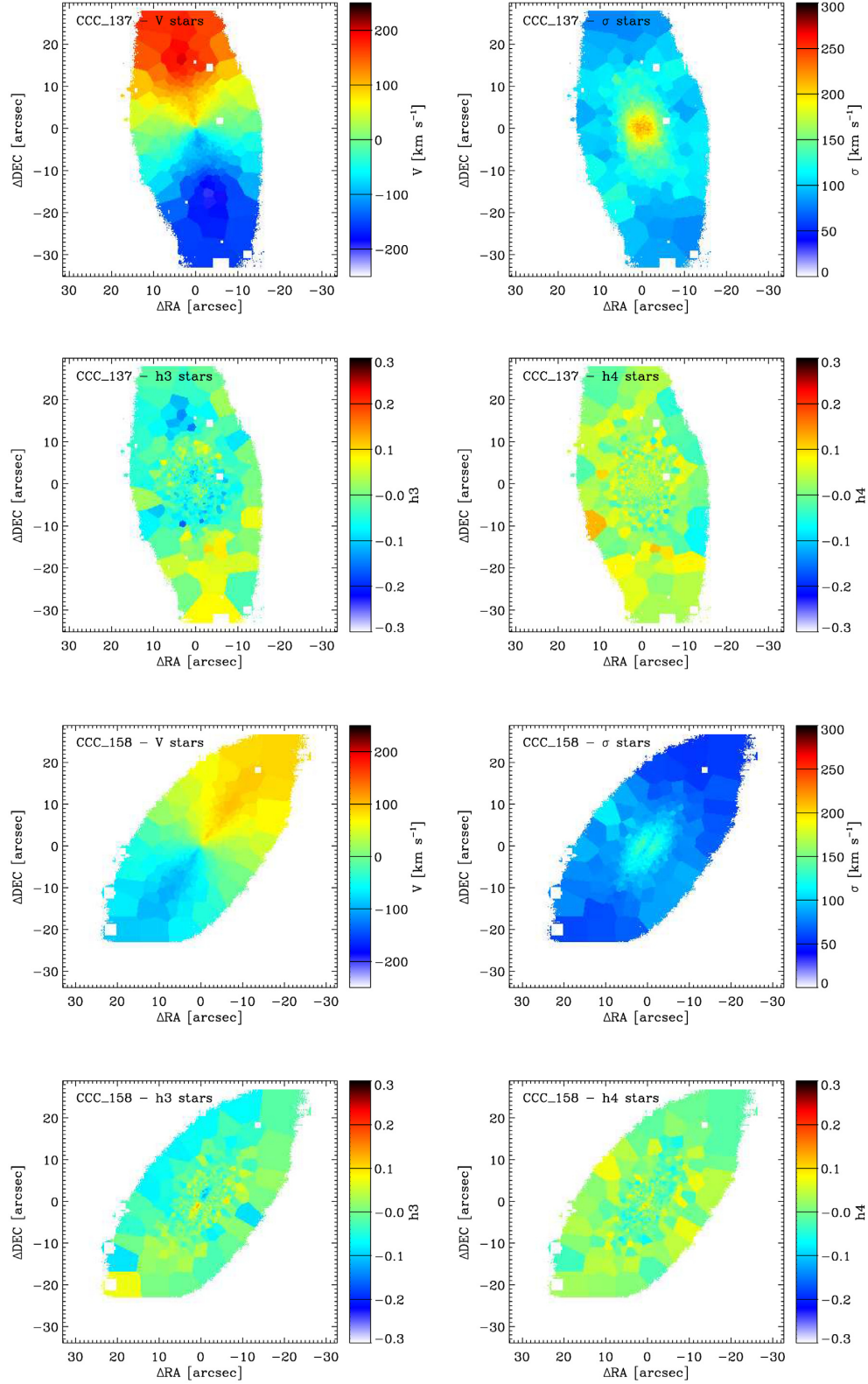


Figure A2. –continued

PGC 043466 – CCC 158. The stellar velocity field is regular and reaches an observed peak-to-peak rotation amplitude of $\sim 200 \text{ km s}^{-1}$. The stellar velocity dispersion has a central peak of $\sim 220 \text{ km s}^{-1}$ and then it rapidly decrease down to $\sim 50 \text{ km s}^{-1}$ at ~ 30 arcsec from the centre. Ionized-gas is detected in

the central ~ 10 arcsec and shows a skewed and irregular velocity field that is $\sim 30^\circ$ misaligned with respect to the stellar velocity field. The degree of gas-stellar misalignment is poorly constrained because of the irregularity of the ionized gas velocity field.

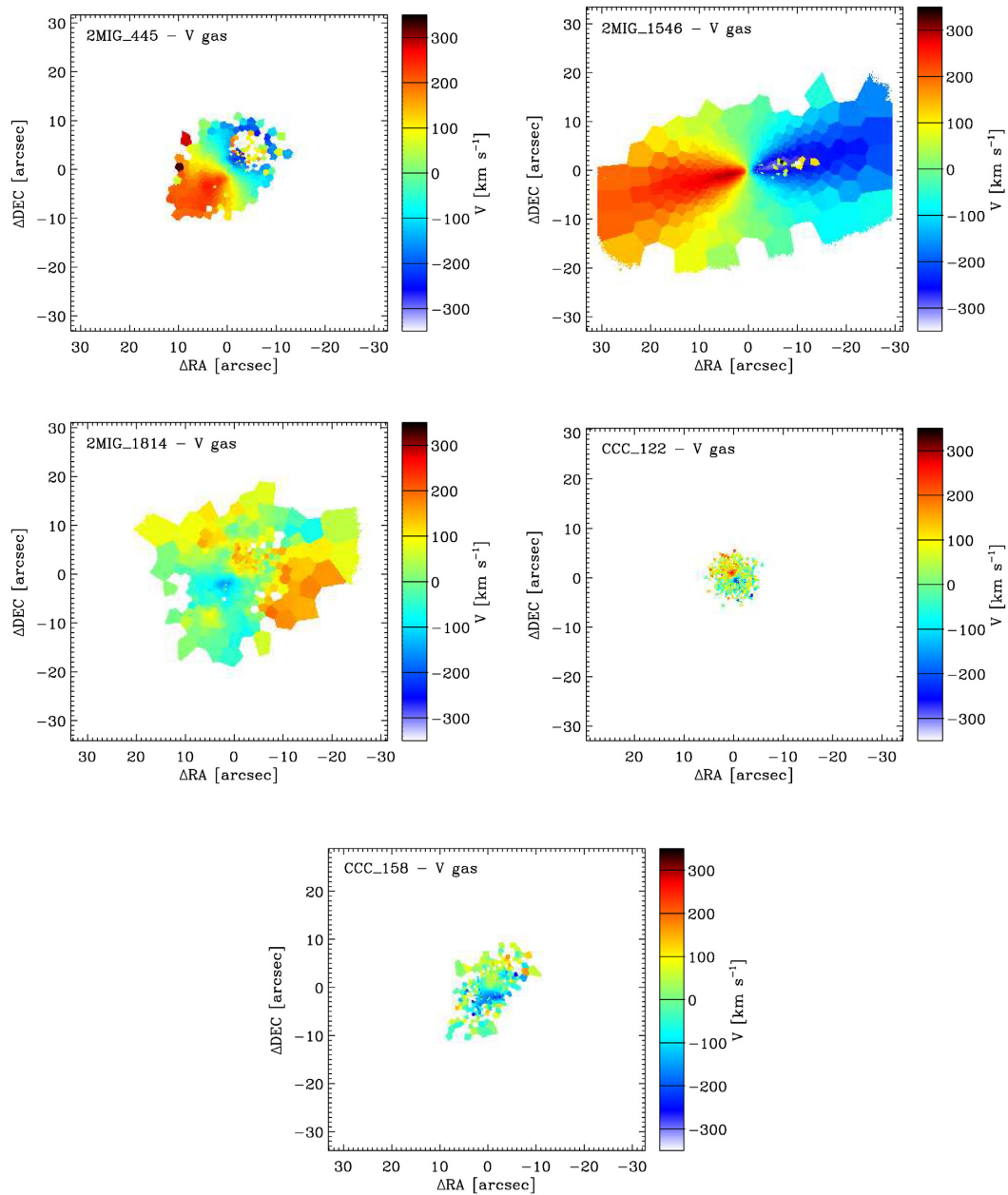


Figure A3. Ionized-gas velocity maps for the galaxies in our MUSE sample for which there is a significant detection of ionized gas.

This paper has been typeset from a \LaTeX file prepared by the author.