




Article

A Multivariate Analysis Framework to Detect Key Environmental Factors Affecting Spatiotemporal Variability of Chlorophyll-a in a Tropical Productive Estuarine-Lagoon System

Regina Camara Lins ¹, Jean-Michel Martinez ², David da Motta Marques ³ ,
José Almir Cirilo ¹ , Paulo Ricardo Petter Medeiros ⁴ and Carlos Ruberto Fragofo Júnior ^{5,*} 

¹ Department of Civil Engineering, Federal University of Pernambuco, 50670-901 Recife, Brazil; reginacamaralins@hotmail.com (R.C.L.); almir.cirilo@gmail.com (J.A.C.)

² Géosciences Environnement Toulouse (GET), Unité Mixte de Recherche 5563, IRD/CNRS/Université Toulouse III, 31400 Toulouse, France; martinez@ird.fr

³ Hydraulic Research Institute, Federal University of Rio Grande do Sul, CP 15029 Porto Alegre, Brazil; dmm@iph.ufrgs.br

⁴ Institute of Geography, Federal University of Alagoas, 57072-970 Maceió, Brazil; paulopetter@hotmail.com

⁵ Center for Technology, Federal University of Alagoas, 57072-970 Maceió, Brazil

* Correspondence: ruberto@ctec.ufal.br; Tel.: +55-82-996-328-814

Received: 3 May 2018; Accepted: 28 May 2018; Published: 1 June 2018



Abstract: Here, we demonstrate how a combination of three multivariate statistic techniques can identify key environmental factors affecting the seasonal and spatial variability of chlorophyll-a (Chl-a) in a productive tropical estuarine-lagoon system. Remote estimation of Chl-a was carried out using a NIR-Red model based on MODIS bands, which is highly consistent with the in situ measurement of Chl-a with root mean square error (RMSE) of 15.24 mg m⁻³ and 13.43 mg m⁻³ for two independent datasets used for the model's calibration and validation, respectively. Our findings suggest that the river discharges and hydraulic residence time of the lagoons promote a stronger effect on the spatial variability of Chl-a in the coastal lagoons, while wind, solar radiation and temperature have a secondary importance. The results also indicate a slight seasonal variability of Chl-a in Mundaú lagoon, which are different the from Manguaba lagoon. The multivariate approach was able to fully understand the relative importance of key environmental factors on the spatiotemporal variability of Chl-a of the aquatic ecosystem, providing a powerful tool for reducing dimensionality and analyzing large amounts of satellite-derived Chl-a data.

Keywords: MODIS; Mundaú lagoon; Manguaba lagoon

1. Introduction

Coastal lagoons are transitional ecosystems that exhibit large spatial variability and seasonality controlled by both continental and oceanic drives, such as river discharge, salinity, water temperature, and hydrodynamics [1,2]. The limited water exchange promotes effective use and recycling of the nutrient inputs, contributing to high levels of biological productivity (e.g., phytoplankton, zooplankton, mussels and fishes) in coastal lagoons [3]. On the other hand, the low water exchange rates also makes these water bodies vulnerable to eutrophication and contamination. This degradation process usually results in an increase of water turbidity due to blooms of cyanobacteria or green algae, affecting the entire trophic structure [4]. Thus, the advancement of methodological frameworks to quantify eutrophication in different scales in time and space are important to improve the understanding of the ecosystem dynamics of coastal lagoons and to develop tools for accurate decision-making [5–7].

Spatiotemporal variability of phytoplankton in coastal lagoons is strongly influenced by various environmental factors [8], most notably: (a) water temperature and light intensity; (b) patterns of river discharge that bring nutrients and organic matter from continental runoff; (c) tide- and wind-induced currents, which can influence nutrient and phytoplankton transport; and (d) biological factors such as grazing by aggregated zooplankton and other organisms, which influence phytoplankton growth through top-down control by herbivores.

Long-term monitoring of chlorophyll-a, Chl-a (i.e., a phytoplankton biomass indicator), is frequently required in order to assess properly the eutrophic state of the aquatic ecosystems [5–7]. However, this monitoring needs a huge effort of field sampling and laboratory measurements to cover, adequately, the distribution of phytoplankton in time and space. As technical and financial resources are not always available, satellite sensors may be an alternative to provide better information on Chl-a variability [9].

Satellite sensors (e.g., Moderate Resolution Imaging Spectroradiometer (MODIS), Medium Resolution Imaging Spectrometer (MERIS), Sea-viewing Wide Field-of-view Sensor (SeaWiFS) and MSI-Sentinel) have improved their capabilities with respect to spectral, radiometric, temporal, and spatial resolutions [10–12], allowing a substantial progress in the remote assessment of chlorophyll-a in turbid and productive waters [13]. In the last decade, several new Chl-a retrieval algorithms focusing on inland turbid and eutrophic water were developed using multispectral data from these spaceborne sensors [14–18]. In turbid and productive estuaries, the best empirical approaches for estimating Chl-a have been obtained with the use of NIR-Red models [19,20]. Nevertheless, long-term observation of Chl-a in tropical inland water is still scarce due to the limitations of an universal validated atmospheric correction method, requiring the development of local Chl-a algorithms considering specific satellite sensors.

In studies involving satellite-derived Chl-a in coastal lagoons, the relation between retrieved Chl-a gradients and key environmental variables is still poorly explored (i.e., using long-term monthly mean maps of Chl-a or univariate statistical techniques [21–25]), affecting comprehensively the understanding of the mechanisms that create the temporal and spatial heterogeneity of Chl-a. Multivariate statistical methods are especially appropriate, providing powerful tools for reducing dimensionality and analyzing large amounts of data. These techniques may provide a rapid evaluation of spatiotemporal patterns retrieved from space and associations between environmental variables, and efficiently filter noise from large data sets [26,27]. Therefore, the objective of the present study is to demonstrate how a combination of multivariate statistic techniques may identify key environmental factors (i.e., tide, wind, hydrologic regime, current, solar radiation, and temperature) affecting seasonal and spatial variability of Chl-a in a productive tropical estuarine-lagoon system of northeastern Brazil.

2. Materials and Methods

2.1. Study Area

Mundaú-Manguaba Estuarine-Lagoon System (MMELS) is a shallow (max. depth of 3.5 m) tropical lagoon system located in the state of Alagoas, northeast Brazil, between 9°35'00''S to 9°46'00''S latitude and 35°34'00''W and 35°58'00''W longitude (Figure 1). The system is composed of three compartments: (a) the Mundaú Lagoon (27 km²) in the eastern MMELS, which receives freshwater mainly from Mundaú river basin (drainage area of 4127 km² and annual average discharge of 35 m³/s); (b) the Manguaba Lagoon (42 km²) in the western MMELS, which receives an annual average fresh water discharge of 28 m³/s from Paraíba do Meio (3145 km²) and Sumaúma (402 km²) river basins; and (c) the mangrove-lined narrow channel system (12 km²), which connects both lagoons via a single 250 m wide tidal inlet to the Atlantic Ocean. MMELS exhibits a tropical semi-humid climate with well-defined dry (from October to December) and wet seasons (from May to July). The average annual mean temperature is 25 °C and the winds blow predominantly from southeast direction governed mainly by trade winds in summer [28]. Manguaba lagoon is generally less saline and deeper than

Mundaú lagoon. Additional physical characteristics of the Mundaú and Manguaba lagoons can be observed in Table 1.

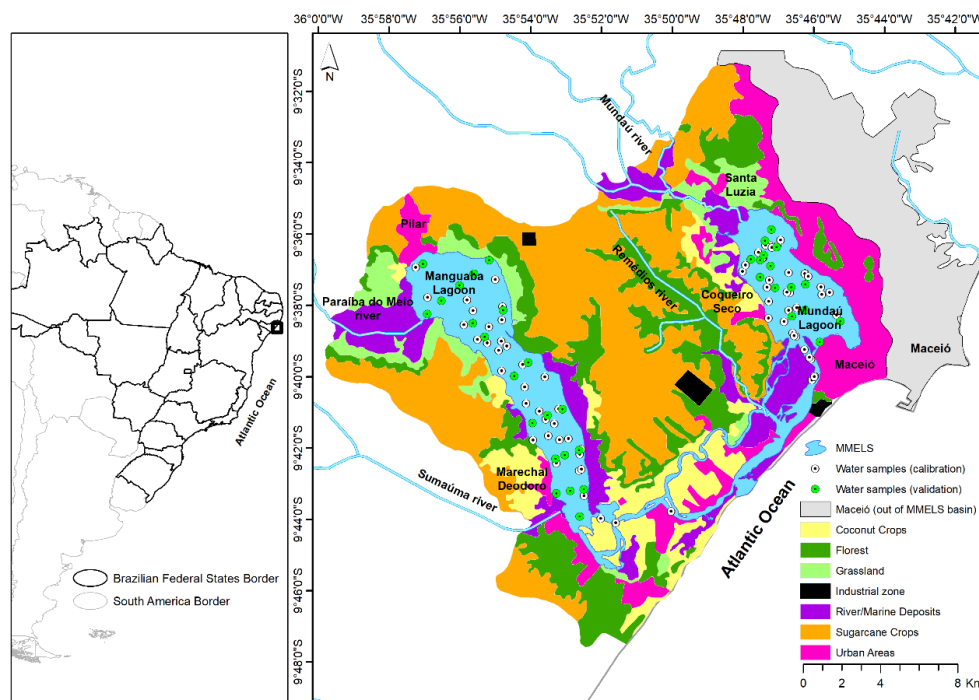


Figure 1. Mundaú-Manguaba Estuarine-Lagoon System (MMELS) study site, land-use cover in surrounding adjacent basins in MMELS (adapted from Guimarães Júnior, et al. [29]), as well as spatial distribution of sampling stations, which were used to collect water samples.

Table 1. Main physical features of the Mundaú and Manguaba lagoons [28].

Features	Mundaú	Manguaba
Area (km ²)	27	43
Volume (10 ⁶ m ³)	43	97.7
Average depth (m)	1.5	2.2
Tidal range (m)	0.2	0.03
Tidal Prism * (10 ⁶ m ³)	17.3	6.1
Average freshwater discharge (m ³ /s)	35	28
Retention time (days)	16	36

* tidal prism is the volume of water in an estuary or inlet between mean high tide and mean low tide, or the volume of water leaving an estuary at ebb tide.

The eastern margin of Mundaú lagoon is predominantly occupied by the urban area of Maceió city (ca. 900,000 inhabitants), the western margin is dominantly occupied mostly by coconut crops and two small urban areas (Santa Luzia do Norte and Coqueiro Seco with a population of approximately 7000 and 5000 inhabitants, respectively). Moreover, sugarcane crops cover the coastal tablelands surrounding the Mundaú lagoon. In Manguaba lagoon, both eastern and western land margins are intensively used for agriculture (i.e., sugarcane and coconut crops), grassland, and vegetation fragments (forest and mangrove areas). The urban areas of Pilar (ca. 30,000 inhabitants in the northern margin) and Marechal Deodoro (ca. 46,000 inhabitants in the southwestern margin) contribute with a significant nutrient loading and organic matter deposit into the Manguaba lagoon. Besides the surrounding cities, high organic and nutrient sources in both lagoons are the result of the release of untreated effluents from the Mundaú and Paraíba do Meio river basins. As result, both lagoons are characterized by eutrophic conditions and dominated by phytoplankton [30].

2.2. Water Sampling and Analysis

Shipboard data were collected during eleven field campaigns (Table 2). In each field campaign, a set of sampling stations spatially well distributed was defined in order to collect water samples for laboratory analysis (see Figure 1), representing a total of 171 surface water samples. Each 2-liter bottle was collected 0.2 m below the water surface immediately before satellite overpass. The samples were stored in a cooler with ice in the dark, and taken back to the laboratory for analyzing the concentration of Chl-a and total suspended solid (TSS). For each water sample, Chl-a was extracted from Whatman GF/F filters into 90% ethanol for 18 h in an amber flask and measured by the spectrophotometric trichromatic method [31]. For TSS determination, Whatman GF/F filters were dried, before and after water filtering, to a constant weight at 103 to 105 °C, and measured gravimetrically [31].

Table 2. Data of each field campaign and the number of collected water samples in MMELS. From this total, 26 and 22 sampling stations were used to calibrate and validate the NIR-Red band ratio model, respectively.

Field Campaign Date	Image Date	Lagoon Site	Number of Water Samples			
			Collected	Discarded	Calibration	Validation
2013-02-22	2013-02-26	Manguaba	21	21	0	0
2013-05-28	2013-05-25	Manguaba	21	21	0	0
2013-08-29	2013-08-29	Manguaba	21	18	0	3
2013-12-03	2013-12-03	Manguaba	21	12	0	9
2015-05-01	2015-05-01	Mundaú	12	4	8	0
2015-06-10	2015-06-09	Mundaú	12	5	7	0
2015-07-14	2015-07-12	Manguaba	12	0	0	0
2015-09-03	2015-09-04	Manguaba	12	7	5	0
2015-09-08	2015-09-08	Mundaú	12	12	0	0
2015-09-22	2015-09-22	Manguaba	12	6	6	0
2017-03-22	2017-03-22	Mundaú	15	5	0	10
Total			171	123	26	22

2.3. Satellite Data and Image Processing

In this study, we used MODIS-Terra (MOD09A1) and MODIS-Aqua (MYD09A1) 500-m spatial resolution Level-3 Surface Reflectance 8-day composites, which are available at <http://LPDAAC.usgs.gov>. These MODIS products were selected in this study, since they are the best daily observation within 8-days interval for each pixel according some image quality criteria, such as viewing angle, presence of clouds, and aerosols quantity. In addition, these MODIS products use a global atmospheric correction algorithm, which corrects for the effects of gaseous and aerosol scattering and absorption as well as adjacency effects caused by variation of land cover, Bidirectional Reflectance Distribution Function (BRDF) and atmosphere coupling effects, and contamination by thin cirrus [32]. Image download and processing were made using the GetMODIS and MODIS River Reflectance Retrieval (MOD3R), software developed by the Institut de Recherche pour le Développement (IRD). GetMODIS was used to download the MODIS products between 2000 and 2016 for all tiles that overlap MMELS domain, mosaic in case of multiple tiles for a scene, clip to the domain extent, and resample to the domain grid cells using a mask polygon. Pixels with horizontal distance between their centers and margin below to 500 m (image resolution) were not considered in this analysis in order to avoid or minimize the effect of margins and bottom sediment on spectral reflectance. In addition, MOD3R was used to obtain the surface reflectance from the first five spectral bands of the MOD09A1 and MYD09A1 products in each pixel of the MMELS domain, as well as to assess image quality.

2.4. NIR-Red Model Based on MODIS Bands to Retrieve Chl-a

An empirical algorithm based on MODIS spectral bands was established to retrieve Chl-a concentrations in MMELS. In order to evaluate the accuracy and stability of the best models based on MODIS remote sensing reflectance, the Chl-a dataset was divided into independent calibration and validation subsets according to Table 2. Despite the high number of collected water samples, only 28% of the sampling stations were used to calibrate and validate the NIR-Red band ratio algorithm to retrieve Chl-a in MMELS either due to the presence of clouds, shadows, the proximity of margins on the measurement sites, or due to the bad quality of the images from MODIS quality product control. This high number of discarded sampling stations reveals how challenging it is to develop bio-optical algorithms based on satellite data for coastal tropical inlands, which exhibit a high cloud cover index throughout the year.

An algorithm was developed in order to identify the optimal relationship between band ratio (λ_2/λ_1) of MODIS remote sensing reflectance and Chl-a concentration. This algorithm consists of testing all possible sets of band ratio best-fit functions (e.g., linear, potential, exponential) between observed and estimated Chl-a within the five spectral bands of the MOD09A1 and MYD09A1. Finally, a NIR-Red band ratio model ($Rrs(859)/Rrs(645)$) for retrieving Chl-a in MMELS was confirmed (Figure 2a), showing a higher correlation between measured and estimated Chl-a concentration for the MMELS calibration dataset ($r^2 = 0.83$ and $RMSE = 15.24 \text{ mg m}^{-3}$) compared to other tested models, such as the standard Blue–Green band ratio model ($r^2 = 0.11$ and $RMSE = 40.25 \text{ mg m}^{-3}$), which is usually applied to Case 1 waters. All calibration data in the Chl-a retrieval algorithm for MMELS were in the 95% confidence line of the linear regression. Due to the particular optical characteristics of waters in each lagoon, the calibration dataset allowed us to propose a unique model for the entire system with a wider range of Chl-a concentrations. The validation result indicates that the NIR-Red band ratio model may retrieve Chl-a successfully with relatively high accuracy ($r^2 = 0.75$ and $RMSE = 13.43 \text{ mg m}^{-3}$, Figure 2b). However, considering the validation dataset, this model seems to underestimate Chl-a values in the low range, which was not observed in the calibration dataset. Thus, the usage of this model to estimate low values of Chl-a ($<25 \text{ } \mu\text{g/L}$) may be associated to higher uncertainties.

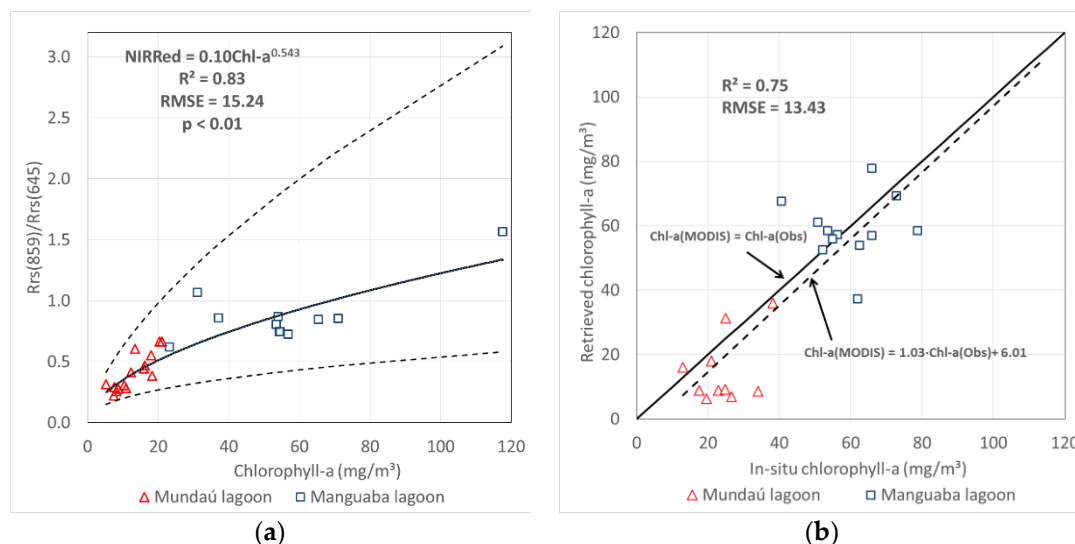


Figure 2. Near infrared-red (NIR-Red) band ratio algorithm to estimate Chl-a in MMELS: (a) semi-empirical potential model using calibration data. The dashed lines represent 95% confidence lines of the linear regression; and (b) observed versus retrieved values of Chl-a using data entirely independent of the calibration data. The dashed line is a linear regression of data points and the solid line represents the discrepancy ratio between observed and predicted values.

2.5. Time-Series of Chl-a and Environmental Variables

The monthly mean Chl-a value for seventeen years (2000–2016) was calculated in each pixel of the MMELS domain from MODIS-derived 8-day Chl-a data using the NIR-Red band ratio model, which was presented in the previous section.

In order to assess cause-and-effect relationships between environmental variables and spatiotemporal variability of Chl-a in MMELS, we obtained the historical time-series of air temperature, wind intensity, solar radiation, precipitation, tidal levels, and main flow tributaries. Meteorological data were available from a meteorological station located 7.5 km northeast of the Mundaú lagoon center. This station is maintained by the Instituto Nacional de Meteorologia (INMET), providing hourly meteorological data. Information on the hourly tidal levels was provided by the Navy Oceanographic Center (CHN) and was based on a harmonic analysis of water level data from Maceió Harbor (9°40.968'S, 35°43.424'W), located 9 km from the MMELS inlet. Two river gauge stations located near the Mundaú and Paraíba do Meio river mouths were selected, providing daily flow data. For each environmental variable, the monthly mean values were calculated based on their original time-series. Finally, an eigenvector-based filtering technique [33] was used to fill missing data in these time-series.

2.6. Spatiotemporal Patterns of Chl-a and Their Key Environmental Factors

A combination of three multivariate statistical techniques was used in order to identify how key environmental factors affect seasonal and spatial variability of Chl-a in MMELS. These techniques generally require a complete time series of input maps without data voids. Therefore, a method to eliminate missing data based on the eigenvector-based filtering technique decomposition was applied to a large dataset to obtain complete a time series of Chl-a maps. However, in order to minimize the effect of the replaced values on the spatiotemporal results of Chl-a, initially we applied a quality control to discard satellite-derived monthly Chl-a maps exhibiting more than 25% missing pixels in the MODIS images over the MMELS. Moreover, for each pixel, time series exhibiting more than 5% of missing data were discarded, resulting in 53 and 79 valid pixels (i.e., pixels with a complete time series of Chl-a) for Mundaú and Manguaba lagoons, respectively. The remaining missing data (less than 1% of total data) were replaced using an eigenvector-based filtering technique, which is a statistical method based on principal component analysis according to Ibanez and Conversi [33].

Principal Component Analysis (PCA) was used to identify the main Chl-a patterns of spatial variability. This analysis is useful for reducing the information of a large number of variables into a smaller set of orthogonal variables (modes or components) that represent the major part of the overall data variance. The complete theory of PCA may be found in Jackson [34]. Each PCA mode is composed by an eigenvector and an eigenvalue. The eigenvectors represent the co-variability of each variable, whereas the eigenvalues express how much of the original variance is explained by each eigenvector. PCA was applied to the satellite-derived Chl-a data, containing the estimated time-series of Chl-a in each valid pixel for both lagoons (i.e., 53 pixels \times 139 months and 79 pixels \times 83 months for Mundaú and Manguaba lagoons, respectively). Arrays of eigenvectors of the first four components, which explained more than 70% of the total variance, were evaluated to identify areas with similar patterns of Chl-a variability. In addition, the principal components were rotated using the varimax procedure in order to relax the orthogonality constraints of the PCA and to improve the understanding of the spatial patterns [35]. Environmental factors that may explain the observed patterns in these first components are discussed.

A cluster analysis was performed to identify Homogeneous Spatial Groups (HSG) of Chl-a with similar variability, complementing PCA analysis. Before this analysis, the data was filtered using the rotated principal components so that at least 70% of the original data variability was maintained. This filtering was made in order to minimize the interference of noise on the cluster analysis [36]. The method of Ward (i.e., a criterion applied in hierarchical cluster analysis) was applied to establish the numbers of HSG [37], and the clustering validation was based on the physical understanding of the geographical expression of the cluster in the MMELS.

Canonical Correspondence Analysis (CCA) was used to assess the relationship between environmental variables and satellite-derived Chl-a data (i.e., time-series with monthly average values in each valid pixel). A complete description of CCA can be seen in Braak [38]. Specifically, CCA was used to identify which environmental variables are important in the spatiotemporal distribution of Chl-a. The derived CCA scores (eigenvectors) were classified considering temporal seasonality (rainy and dry seasons) and HSG obtained from cluster analysis.

All multivariate analyses were performed using the software Palaeontological Statistics (PAST), which is freely available to download at <https://folk.uio.no/ohammer/past/>, and output maps were produced in ArcGIS® 10.2.

3. Results

3.1. Constituent Concentrations

Notably, the Chl-a and TSS concentrations in the water samples exhibited high variability (Table 3), which is a particular characteristic of this system (i.e., high spatial and temporal gradients of Chl-a). The levels of Chl-a differed between the lagoons, ranging between 0.97 and 48.9 mg m⁻³ (mean and SD values of 12.86 and 9.72 mg m⁻³, respectively) in Mundaú lagoon, and between 5.99 and 117.54 mg m⁻³ in Manguaba lagoon (mean and SD values of 42.77 and 24.22 mg m⁻³, respectively). In contrast to the Chl-a concentrations, the TSS concentrations were higher in Mundaú lagoon (range of 15.2–61.0 mg L⁻¹ and mean value of 32.8 mg L⁻¹) in comparison with Manguaba lagoon (range of 9.0–44.0 mg L⁻¹ and mean value of 22.7 mg L⁻¹). In addition, Chl-a and TSS concentrations showed low correlation in the MMELS ($r^2 = 0.08$; data not shown), suggesting MMELS can be characterized as an optically complex environment (Case 2 water).

Table 3. Statistics of Chl-a and TSS concentration measured on the water samples collected in the MMELS.

Subset	Chl-a (mg/m ³)				SST (mg/L)			
	Min	Max	Mean	SD	Min	Max	Mean	SD
Mundaú (N = 51)	0.97	48.90	12.86	9.72	15.15	61.00	32.80	11.99
Manguaba (N = 120)	5.99	117.54	42.77	24.22	9.00	44.00	22.86	9.34
MMELS (N = 171)	0.97	117.54	27.81	23.72	9.00	61.00	27.83	11.79

3.2. Spatiotemporal Variability of Chl-a and Driven Factors

The first four modes of the rotated PCA explained together at least 70% of the total variance of the satellite-derived Chl-a for both lagoons (Table 4). The first three principal components (i.e., PC1, PC2 and PC3) were found to be the most significant ones, both statistically and physically.

Table 4. Explained variance for the first four rotated principal components for both lagoon in MMELS.

Site	PC1	PC2	PC3	PC4
Mundaú lagoon	28.11%	25.27%	13.23%	6.05%
Manguaba lagoon	36.70%	27.93%	7.16%	6.71%

The PCA identified individual spatial patterns of the eigenvectors for each principal component in both lagoons (Figure 3). For Mundaú lagoon, the first rotated component of the PCA (Figure 3a) reveals a transverse gradient (east-west direction), consisting of negative eigenvector values throughout the lagoon. The second rotated component shows a longitudinal gradient (north-south direction), with positive values in the southern and central part of the lagoon and negative values concentrated in the northern lagoon (Figure 3b). The third rotated component is mostly characterized by negative

values of the eigenvectors, which are concentrated in the southern and northern regions of the lagoon, close to the main water inflows, while the positive values mainly highlight the central part of the Mundaú lagoon (Figure 3c).

For Manguaba lagoon, the first rotated component of the PCA is constituted by negative values of eigenvectors crossing a well-defined transversal gradient (east-west direction), which covers the center and south part of the lagoon (Figure 3d). In addition, northern lagoon shows a slightly gradient in comparison to other regions. The second rotated component shows a longitudinal gradient with positive values in the center and south part of the lagoon, as well as negative values mainly highlighted in the northern Manguaba lagoon (Figure 3e). The third rotated component is majority characterized by positive values of eigenvectors, which are concentrated in the central and southern regions of the Manguaba lagoon (Figure 3f). In addition, there is no significant variability of eigenvector values in the north center part of Manguaba lagoon (Figure 3f).

The cluster analysis using the first four components of PCA permitted identifying four well-defined HSG of Chl-a variability in each lagoon (Figure 4). All HSG identified by the cluster analysis are coherent with the spatial patterns presented by the rotated PCA. In general, the groups were spatially disposed in the longitudinal direction in both lagoons (Figure 4), following a similar characteristic pointed out by the second mode of the rotated PCA. For Mundaú lagoon, the stations that compose HSG1 are located in the northern region and two large groups (HSG2 and HSG3) comprise stations located on the central region of the lagoon. In addition, a fourth group was identified in the southern lagoon (HSG4), with a few cells distributed over the west margin. There was no significant gradient of average values of Chl-a among the groups in Mundaú lagoon, only a slight increase of average values of Chl-a in HG1 and HG4 in comparison to central HSG (Table 5). In Manguaba lagoon (Figure 4b), two large groups (HSG2 and HSG1) have been found in the central and northern part of the lagoon. The cluster analysis also properly identified two small groups in the southern lagoon (HSG4) and in the west margin (HSG3). A longitudinal Chl-a gradient was observed from south (HSG4 with higher values) to north (HSG1 with lower values) part of the lagoon (Table 5).

The monthly variability of the average values of estimated Chl-a in each HSG may be observed in Figure 5. In general, Manguaba lagoon has a more definite seasonality in comparison to Mundaú lagoon, with higher Chl-a values being observed in the wet season (April to June). In Mundaú lagoon, higher values of Chl-a were observed in the dry season (October to March). The northern Manguaba lagoon (HSG1) has a similar temporal variability of Chl-a to Mundaú lagoon.

The derived CCA scores indicated a slight seasonal variability of Chl-a in Mundaú lagoon (Figure 6a), making it difficult to identify the relative importance of environmental factors on the temporal variability of Chl-a. Environmental factors such as precipitation, river discharge, and tide variability are mostly associated with spatial groups located at northern portions of the Mundaú lagoon (groupings 1 and 2), whereas wind and solar radiation affect a large portion of points in HSG3. CCA analysis did not reveal a notable relationship between environmental factors and variability of Chl-a in the HSG4, being air temperature seems to have a larger relative importance in this HSG.

Differently from Mundaú lagoon, CCA indicated more defined seasonal variability of Chl-a in Manguaba lagoon (Figure 6b). In the dry season, environmental factors such as wind, solar radiation, and air temperature have a major influence on Chl-a while precipitation, river discharge, and tide variability play an important role on Chl-a variability in the rainy season. Chl-a variability in the northern portion of the Manguaba lagoon is mainly affected by precipitation and river discharge. CCA analysis did not reveal a clear relationship between environmental factors and variability of Chl-a in the central portion of the Manguaba lagoon (groupings 2 and 3). CCA scores also indicated that air temperature, wind, and solar radiation influence the southern portion of Manguaba lagoon.

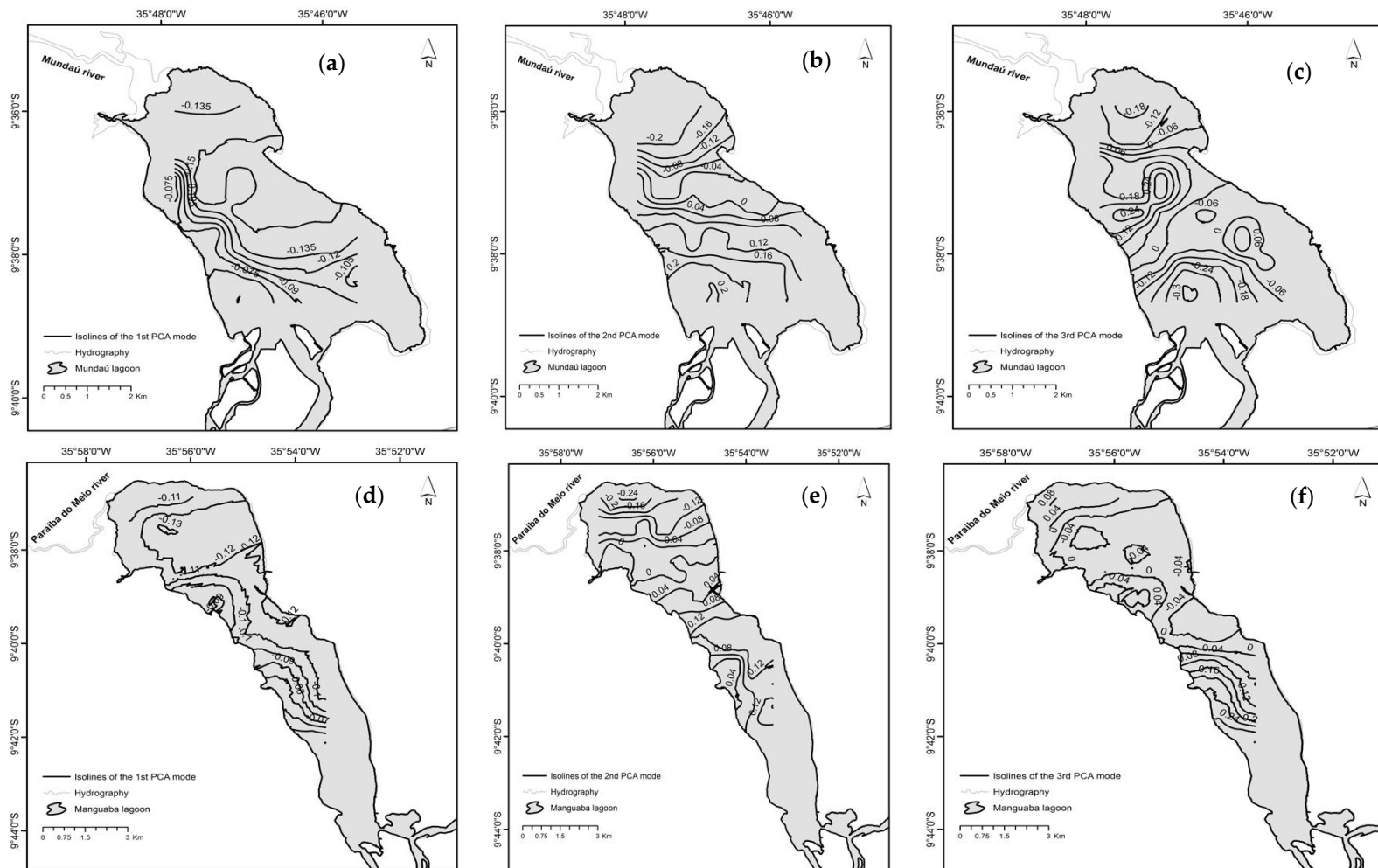


Figure 3. Isolines of the eigenvector values of the co-variance matrix of the (a,d) first; (b,e) second and (c,f) third rotated principal component for Mundaú and Manguaba lagoons.

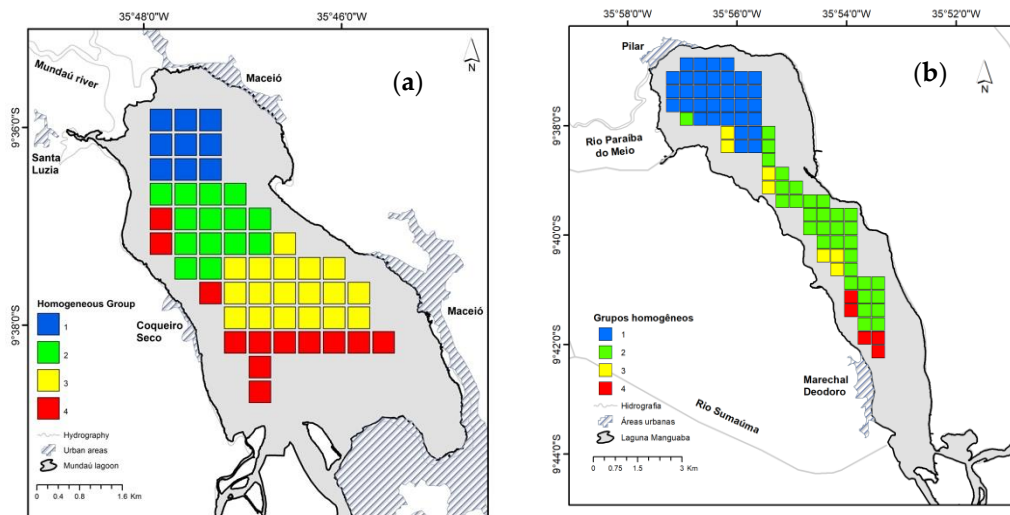


Figure 4. Homogeneous Spatial Groups (HSG) identified by Cluster Analysis using the first four principal rotated components from PCA in the (a) Mundaú and (b) Manguaba lagoons.

Table 5. Statistics of estimated Chl-a considering different HSG for each lagoon.

Site	Group	Min	Max	Mean	SD
		mg/m ³	mg/m ³	mg/m ³	(%)
Mundaú lagoon	HSG1	6.42	46.88	18.81	7.18
	HSG2	5.95	37.29	17.48	6.15
	HSG3	4.22	35.44	17.04	5.95
	HSG4	6.62	51.24	22.54	7.94
Manguaba lagoon	HSG1	8.25	79.42	23.68	10.11
	HSG2	8.27	155.10	31.05	16.69
	HSG3	13.85	139.05	41.88	25.13
	HSG4	9.96	263.77	72.86	51.73

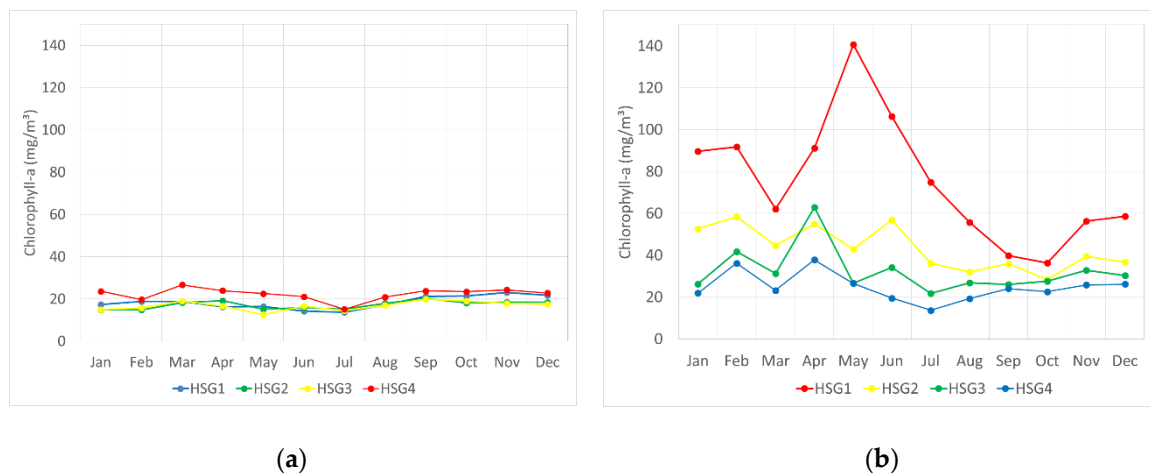


Figure 5. Long-term (2002–2016) monthly average values of Chl-a concentration for (a) Mundaú and (b) Manguaba lagoons, considering different HSG obtained in the Cluster Analysis.

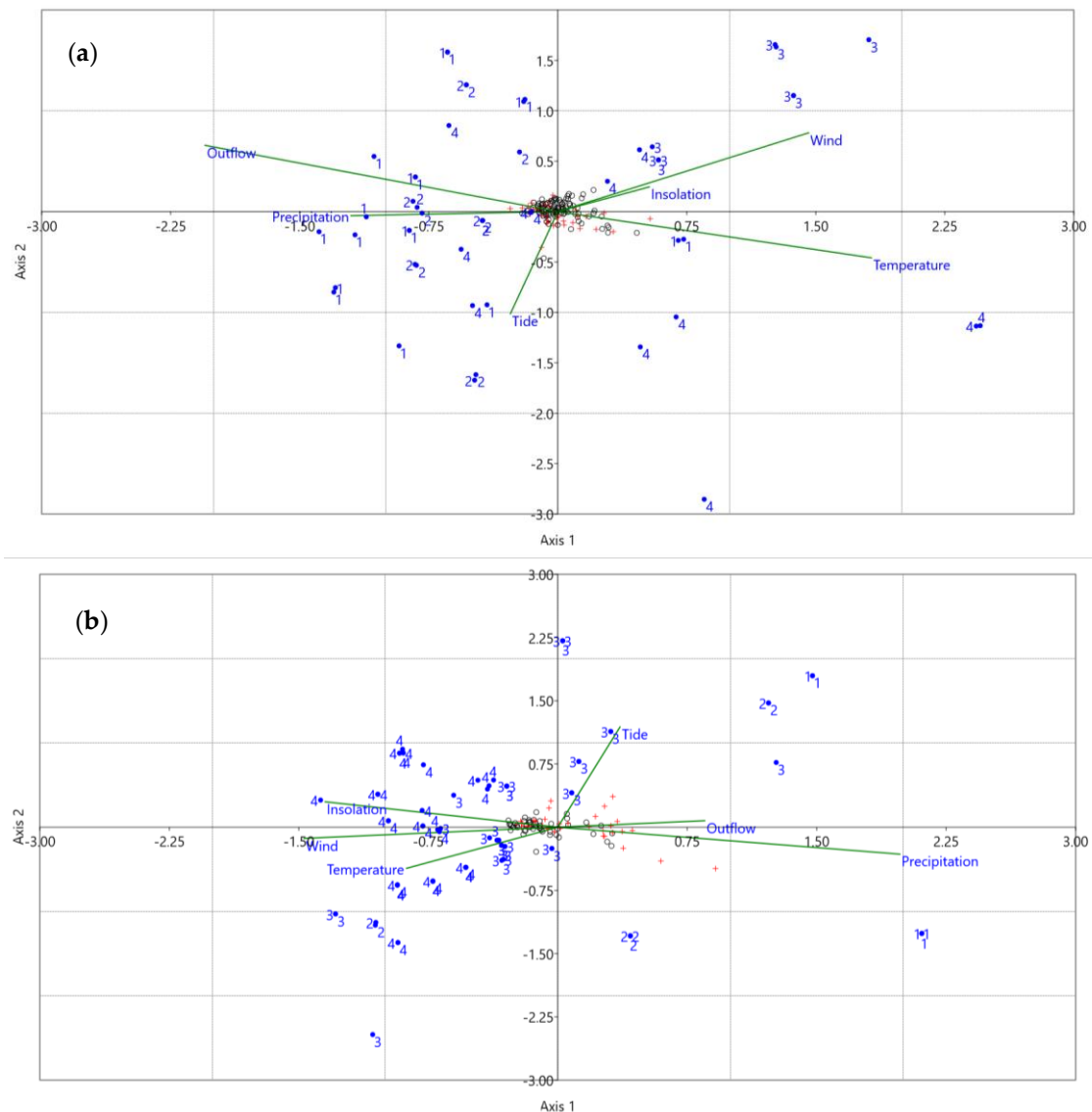


Figure 6. Canonical correspondence analysis (CCA) ordination diagram with spatial and temporal scores (points) and environmental variables (arrows) for (a) Mundaú and (b) Manguaba lagoons. Temporal scores were split into dry (o) and rainy (+) seasons, respectively. Spatial scores (•) were split by the HSG obtained from cluster analysis (see Figure 4).

4. Discussion

The first component of the rotated PCA indicated a transverse gradient of Chl-a variability between the west and east margins for both lagoons. This main pattern of variability may be associated to the Hydraulic Residence Time (HRT), since it is a determining factor in spatial distribution processes and nutrient availability, affecting the phytoplankton development, and, therefore, it may explain the spatiotemporal changes in Chl-a concentration on the water surface [39].

In general, the HRT in Mundaú lagoon is lower than in Manguaba lagoon [28,40], since Manguaba lagoon has a lower influence of tidal forces due to the narrower channels compared to channel systems that connect Mundaú lagoon to the inlet. Thus, the flow rate of seawater to Manguaba lagoon is reduced. In Mundaú lagoon, the lower HRT values (i.e., ranging from 6 h in the south to 18 days in the north) are found near the west margin, which indicates a larger circulation in this region from the mouth of the Mundaú River to the entrance of the channel that links the lagoon to the ocean [41]. On the other hand, higher HRT values (between 23 and 27 days) were found in the most central

region and close to east margin, decreasing water circulation and promoting less variability in Chl-a concentrations (see standard deviation in Table 5). The spatial variability of the HRT in Manguaba Lagoon was recently estimated by Souza [40]. However, this study neglected the effect of the wind on water circulation. Previous studies reported that wind might play an important role on the mixing and spatial patterns of hydrodynamics in Mundaú and Manguaba lagoons [28,42]. Therefore, further efforts are needed as an attempt to associate the spatial distribution of Chl-a and HRT in Manguaba Lagoon.

Besides HRT, another factor that may influence the variability pattern of Chl-a is the lateral contribution of organic load due to point and non-point sources from the land use and urban occupation surrounding the lagoons. Costa, et al. [43] reported that the main external sources of particulate organic matter to the lagoons (allochthonous source) during the rainy season are untreated sewage discharged from Santa Luzia, Coqueiro Seco, and Maceió cities for Mundaú lagoon, and fertilizer and nutrient loading, probably coming from sugarcane crops, for Manguaba lagoon. That work also identified that sewage discharge was practically nonexistent into Manguaba lagoon, although minor wastewater discharges have been observed near the mouths of the Sumaúma and Paraíba do Meio Rivers. Despite the external sources of particulate organic material in suspension, the major source is generated within the lagoons (autochthonous source), resulting from the phytoplankton mortality [43]. This suggests that the conditions of water quality are being affected more strongly by the HRT than by the nutrient loads, as identified by Wainger, et al. [44] in small sub-estuaries of Chesapeake Bay.

The second principal component indicated a longitudinal variability of Chl-a concentrations in both lagoons, since the values of eigenvectors pointing in opposite directions from the northern (close to the main tributaries) to the southern portion (close to ocean inlets) of the lagoons. In Mundaú lagoon, this component may be capturing the effects of fluvial discharge and tides at the north and south extremities, respectively, where highest Chl-a concentrations have been found. Indeed, CCA has also shown that Chl-a variability in the northern region of Mundaú Lagoon is strongly influenced by the Mundaú River discharge and precipitation. Thus, land-use and land-cover of the Mundaú river basin play an important role in the input of freshwater, organic matter, and nutrients to the lagoon, favoring the development of phytoplankton species more adapted to less saline environments. As this region does not show an excessive algal growth, it is suggested that the main source of total suspended solids (TSS) (i.e., solids discharged by Mundaú River, see Oliveira and Kjerfve [28]) may be limiting the algal growth in this region. In the central eastern region of Mundaú Lagoon (groups HSG2 and HSG3), where HRT are higher, Chl-a concentrations showed a slight variation in comparison with regions occupied by groups HSG1 and HSG4. In this region, other environmental factors such as wind, temperature, and solar radiation seem to control this variability (see Figure 6a). Despite the high HRT and constant nutrient supply (from domestic sewage and/or from phytoplankton decomposition), high concentrations of Chl-a (e.g., above 60 µg/L) were not observed in this central region. This limitation may be attributed to higher mortality and predation rates by bivalve mussels (particularly by the charru mussel, *Mytella charruana*, Maioli, et al. [45]) and also to a larger growth limitation due to light inhibition in the water, restricting the development of phytoplankton in this region.

Melo-Magalhães et al. [29] found that most of the phytoplankton species identified in the Mundaú and Manguaba lagoons are freshwater (51%) species, followed by species of the neritic or neritic/marine (47%), and only 2% of phytoplankton species have an estuarine origin. In Mundaú Lagoon, the authors also identified a domain of diatom species, mainly *Skeletonema cf. costatum*, in the regions with higher concentrations of salinity. It is well-known that the growth of diatom species is more difficult in environments with high levels of water turbidity [46] than other phytoplankton species such as cyanobacteria. Moreover, diatom species are the main source of food for the charru mussel [47], which is found only in Mundaú Lagoon [28].

In the southern area of Mundaú lagoon, which receives a larger contribution of sewage from the Maceió city and has a lower HRT, the causal relationship for Chl-a variability was not evidenced by CCA. In this region, a tide prism probably controls the patterns of variability of the Chl-a concentration. However, the time scale adopted in the study (monthly average) may not have been suitable to detect

faster responses, such as diurnal and semi-diurnal variations in the tidal range (6 h between the highest and lowest levels), impairing the cause and effect analysis. Moreover, the CCA did not indicate a well-defined temporal variability of Chl-a between dry and rainy seasons over the analyzed period in Mundaú lagoon. This fact corroborates with the results obtained during the field campaigns and past studies carried out by other authors during the period considered in this study [48].

In Manguaba lagoon, where the tidal prism have a less marked effect than in Mundaú Lagoon [28], the longitudinal gradient of Chl-a seems to be associated with the hydrological seasonality (i.e., dry and rainy seasons). In the northern end of Manguaba Lagoon (HSG1), environmental factors such as wind, solar radiation, and temperature play an important role in Chl-a variability during the dry season (Figure 6b). During the dry season, the development of phytoplankton species, which are better adapted to freshwater, seems to be more closely associated to the lower input of inorganic particulate material from the Paraíba do Meio River and to the high autochthonous production of nutrients in comparison with Mundaú lagoon. In the rainy season, the enhancement of fluvial and solids discharge rates, possibly, limits phytoplankton growth in the northern region of Manguaba Lagoon when compared to the other regions.

The central region of Manguaba lagoon (HSG2 and HSG3) corresponds to a transition area that is influenced mainly by environmental factors closely associated with the dry season (i.e., temperature, solar radiation, and wind) and, to a lesser effect, by the tide. The central region shows much higher concentrations of Chl-a than in Mundaú Lagoon, which is probably due not only to the lower concentrations of suspended inorganic particulate matter here than in the northern region but also, and mainly, to the type of phytoplankton species dominating in this region. Melo-Magalhães et al. [29] reported that the dominant species in Manguaba lagoon are freshwater cyanophytes, mainly *Anabaena spiroides* in the dry season, *Microcystis aeruginosa* in the rainy season, and diatom species, predominantly *Cyclotella meneghiniana*.

In the southern Manguaba Lagoon (HSG4), Chl-a variability shows extremely high values in May associated to environmental factors of the rainy season (i.e., precipitation and flow). In this season, the higher Chl-a concentrations may be attributed to the higher inputs of nutrients and organic matter from the Sumaúma River and from the Marechal Deodoro city, as well as to lower turbidity and to the dominance of freshwater cyanobacteria species, particularly *Microcystis aeruginosa*, since salinity concentrations drop in this season. *Microcystis* species are well-known as strategist species, being capable to move vertically, enabling them to find better conditions of light in the water column, thus favoring their growth [49]. Moreover, these species are also able to group together, forming colonies and thereby hindering herbivory by predators.

5. Conclusions

Although the studied lagoons show different optical characteristics, it was found that an unique bio-optical model based on MODIS bands might be applied to estimate Chl-a concentrations for both lagoons, which may be used for time-series reconstruction of Chl-a concentrations. The higher Chl-a values found in Manguaba lagoon better fit the upper part of the model, while the lower Chl-a concentrations with a high interference of turbidity in Mundaú lagoon better fit the lower part of the model. Thus, despite the high rate of siltation and shallow depths, the high turbidity and/or productivity of these lagoons allowed the use of remote sensing techniques to estimate Chl-a concentrations without any interference of the bottom sediment on the spectral reflectance, since the depth of the photic zone (light penetration zone) is lower than the water depth in both lagoons.

The NIR-Red band ratio model for retrieving Chl-a in MMELS used only two MODIS bands (i.e., Rrs(859) and Rrs(645)), which are also available in other MODIS products with a higher spatial resolution (e.g., MOD09Q1 and MYD09Q1 with 250-m spatial resolution). Therefore, we recommend performing a new model calibration considering more refined spatial resolution products in future investigations. Furthermore, new field campaigns are strongly recommended to develop and validate a local atmospheric correction algorithm, to improve the validation of the radiometric model obtained in

this study, as well as the calibration of new models considering the radiometric and spatial resolutions of the newly released sensors, such as Sentinel-2/MSI, Envisat/MERIS and Sentinel-3/OLCI satellites. In addition, we recommend the use of airborne sensors (e.g., using drones) that allow sampling spectral reflectance with higher spatial coverage and radiometric resolution in future investigations.

As the presence of clouds in tropical estuaries is very frequent, satellite sensors with poorer temporal resolution may be not suitable for a most extensive temporal assessment of Chl-a in these systems. Thus, the satisfactory achievements obtained in this study considering a monthly temporal scale may be attributed to (a) the monitoring frequency of the MODIS, since a high number of images were discarded due to low quality information; and to (b) the high HRT for both lagoons, which provide a quasi-steady state for short-term scales (i.e., from days to weeks).

The statistical techniques used in this study were useful tools for identifying properly the spatiotemporal distribution patterns of Chl-a in the MMELS and the key environmental factors associated to this variability. The multivariate statistical methods were also able to identify the main components of variability of Chl-a. In the transverse direction, Chl-a variability was associated to the HRT and nutrient loadings from lateral sources. However, the role of HRT on the Manguaba Lagoon Chl-a variability still needs additional investigation. Our findings showed that precipitation and river discharge promote a stronger effect on Chl-a variability in the north of Mundaú lagoon and in the south of Manguaba lagoon, while wind, solar radiation, and temperature influence this variability more strongly in the northern area of Manguaba lagoon and the center-eastern area of Mundaú lagoon. This analysis did not show clearly the effects of the tide on the spatiotemporal patterns of Chl-a, which may be related to the time scale adopted in the study.

Author Contributions: R.C.L., J.-M.M., J.A.C. and C.R.F.J. developed the idea for the study, as well as its design. R.C.L., D.d.M.M., P.R.P.M. and C.R.F.J. were responsible for the construction and validation of the dataset. R.C.L., J.-M.M., J.A.C., D.d.M.M., P.R.P.M. and C.R.F.J. participated in the analysis and development of the discussion. R.C.L. and C.R.F.J. finalized the manuscript. All authors read and approved the manuscript.

Acknowledgments: We are grateful to institutional grants provided by the Agency for Financing Studies and Projects (Finep), research project No. 01.13.0419.00, and The Brazilian National Council for Scientific and Technological Development (CNPq), through the Universal Research Project (476789/2013-3) and Instituto do Milênio Estuários project (420.050/2005-1 and 573.601/2008-9), which funded all operating expenses and English edition, respectively. We also thank the Research Support Foundation of the State of Pernambuco (FACEPE), who granted a doctoral scholarship (PBPG-1148-3.01/12) to the first author, and IMA/AL, who provided the boat that was used for collecting the in situ data. We are also grateful to the Global Lake Ecological Observatory Network (GLEON, www.gleon.org) for providing a venue and resources for lake-science discussions. The authors would also like to thank the anonymous referees, who helped to significantly improve the quality and the clarity of this manuscript.

Conflicts of Interest: The authors declare no conflict of interest.

References

1. Tundisi, J.G.; Tundisi, T.M. *Limnologia*, 1th ed.; Oficina de Textos: São Paulo, Brazil, 2008; p. 632.
2. Mitchell, S.B.; Jennerjahn, T.C.; Vizzini, S.; Zhang, W. Changes to processes in estuaries and coastal waters due to intense multiple pressures—An introduction and synthesis. *Estuar. Coast. Shelf Sci.* **2015**, *156*, 1–6. [[CrossRef](#)]
3. Hardisty, J. Introduction to estuarine systems. In *Estuaries: Monitoring and Modeling the Physical System*; Blackwell Publishing: Hoboken, NJ, USA, 2007; pp. 3–22.
4. Cadee, G.C. Book review: Nutrients and eutrophication in estuaries and coastal waters. *Aquat. Ecol.* **2004**, *38*, 616–617. [[CrossRef](#)]
5. Boyer, J.N.; Kelble, C.R.; Ortner, P.B.; Rudnick, D.T. Phytoplankton bloom status: Chlorophyll a biomass as an indicator of water quality condition in the southern estuaries of florida, USA. *Ecol. Indic.* **2009**, *9*, S56–S67. [[CrossRef](#)]
6. Scanes, P.; Coade, G.; Doherty, M.; Hill, R. Evaluation of the utility of water quality based indicators of estuarine lagoon condition in nsw, australia. *Estuar. Coast. Shelf Sci.* **2007**, *74*, 306–319. [[CrossRef](#)]

7. Paerl, H.W.; Valdes-Weaver, L.M.; Joyner, A.R.; Winkelmann, V. Phytoplankton indicators of ecological change in the eutrophying Pamlico Sound system, North Carolina. *Ecol. Appl.* **2007**, *17*. [[CrossRef](#)]
8. Falkowski, P.G.; Barber, R.T.; Smetacek, V. Biogeochemical controls and feedbacks on ocean primary production. *Science* **1998**, *281*, 200–206. [[CrossRef](#)] [[PubMed](#)]
9. Navalgund, R.R.; Jayaraman, V.; Roy, P.S. Remote sensing applications: An overview. *Curr. Sci.* **2007**, *93*, 1747–1766.
10. Bukata, R.P. Retrospection and introspection on remote sensing of inland water quality: Like déjà vu all over again. *J. Great Lakes Res.* **2013**, *39*, 2–5. [[CrossRef](#)]
11. Odermatt, D.; Gitelson, A.; Brando, V.E.; Schaepman, M. Review of constituent retrieval in optically deep and complex waters from satellite imagery. *Remote Sens. Environ.* **2012**, *118*, 116–126. [[CrossRef](#)]
12. Tyler, A.N.; Hunter, P.D.; Spyrakos, E.; Groom, S.; Constantinescu, A.M.; Kitchen, J. Developments in earth observation for the assessment and monitoring of inland, transitional, coastal and shelf-sea waters. *Sci. Total Environ.* **2016**, *572*, 1307–1321. [[CrossRef](#)] [[PubMed](#)]
13. Cannizzaro, J.P.; Carder, K.L. Estimating chlorophyll a concentrations from remote-sensing reflectance in optically shallow waters. *Remote Sens. Environ.* **2006**, *101*, 13–24. [[CrossRef](#)]
14. Le, C.; Hu, C.; English, D.; Cannizzaro, J.; Chen, Z.; Feng, L.; Boler, R.; Kovach, C. Towards a long-term chlorophyll-a data record in a turbid estuary using MODIS observations. *Prog. Oceanogr.* **2013**, *109*, 90–103. [[CrossRef](#)]
15. Dall’Olmo, G.; Gitelson, A.A.; Rundquist, D.C.; Leavitt, B.; Barrow, T.; Holz, J.C. Assessing the potential of SeaWiFS and MODIS for estimating chlorophyll concentration in turbid productive waters using red and near-infrared bands. *Remote Sens. Environ.* **2005**, *96*, 176–187. [[CrossRef](#)]
16. Chavula, G.; Brezonik, P.; Thenkabail, P.; Johnson, T.; Bauer, M. Estimating chlorophyll concentration in Lake Malawi from MODIS satellite imagery. *Phys. Chem. Earth Parts A/B/C* **2009**, *34*, 755–760. [[CrossRef](#)]
17. Lyu, H.; Li, X.; Wang, Y.; Jin, Q.; Cao, K.; Wang, Q.; Li, Y. Evaluation of chlorophyll-a retrieval algorithms based on MERIS bands for optically varying eutrophic inland lakes. *Sci. Total Environ.* **2015**, *530–531*, 373–382. [[CrossRef](#)] [[PubMed](#)]
18. Palmer, S.C.J.; Hunter, P.D.; Lankester, T.; Hubbard, S.; Spyrakos, E.; Tyler, A.N.; Présing, M.; Horváth, H.; Lamb, A.; Balzter, H.; et al. Validation of Envisat MERIS algorithms for chlorophyll retrieval in a large, turbid and optically-complex shallow lake. *Remote Sens. Environ.* **2015**, *157*, 158–169. [[CrossRef](#)]
19. Le, C.; Hu, C.; Cannizzaro, J.; English, D.; Muller-Karger, F.; Lee, Z. Evaluation of chlorophyll-a remote sensing algorithms for an optically complex estuary. *Remote Sens. Environ.* **2013**, *129*, 75–89. [[CrossRef](#)]
20. Gitelson, A.A.; Schalles, J.F.; Hladik, C.M. Remote chlorophyll-a retrieval in turbid, productive estuaries: Chesapeake Bay case study. *Remote Sens. Environ.* **2007**, *109*, 464–472. [[CrossRef](#)]
21. Pan, C.-W.; Chuang, Y.-L.; Chou, L.-S.; Chen, M.-H.; Lin, H.-J. Factors governing phytoplankton biomass and production in tropical estuaries of western Taiwan. *Cont. Shelf Res.* **2016**, *118*, 88–99. [[CrossRef](#)]
22. Muylaert, K.; Sabbe, K.; Vyverman, W. Spatial and temporal dynamics of phytoplankton communities in a freshwater tidal estuary (Schelde, Belgium). *Estuar. Coast. Shelf Sci.* **2000**, *50*, 673–687. [[CrossRef](#)]
23. O’Boyle, S.; Wilkes, R.; McDermott, G.; Ní Longphuirt, S.; Murray, C. Factors affecting the accumulation of phytoplankton biomass in Irish estuaries and nearshore coastal waters: A conceptual model. *Estuar. Coast. Shelf Sci.* **2015**, *155*, 75–88. [[CrossRef](#)]
24. Rochelle-Newall, E.J.; Chu, V.T.; Pringault, O.; Amouroux, D.; Arfi, R.; Bettarel, Y.; Bouvier, T.; Bouvier, C.; Got, P.; Nguyen, T.M.H.; et al. Phytoplankton distribution and productivity in a highly turbid, tropical coastal system (Bach Dang estuary, Vietnam). *Mar. Pollut. Bull.* **2011**, *62*, 2317–2329. [[CrossRef](#)] [[PubMed](#)]
25. Haraguchi, L.; Carstensen, J.; Abreu, P.C.; Odebrecht, C. Long-term changes of the phytoplankton community and biomass in the subtropical shallow Patos Lagoon estuary, Brazil. *Estuar. Coast. Shelf Sci.* **2015**, *162*, 76–87. [[CrossRef](#)]
26. Bierman, P.; Lewis, M.; Ostendorf, B.; Tanner, J. A review of methods for analysing spatial and temporal patterns in coastal water quality. *Ecol. Indic.* **2011**, *11*, 103–114. [[CrossRef](#)]
27. Yan, F.; Yuhong, W.; Yihao, L.; Hua, X.; Zhenbo, L. Feature of phytoplankton community and canonical correlation analysis with environmental factors in Xiaqing River estuary in autumn. *Procedia Eng.* **2012**, *37*, 19–24. [[CrossRef](#)]

28. Oliveira, A.M.; Kjerfve, B. Regular article: Environmental responses of a tropical coastal lagoon system to hydrological variability: Mundaú-manguaba, Brazil. *Estuar. Coast. Shelf Sci.* **1993**, *37*, 575–591. [[CrossRef](#)]
29. Guimarães Júnior, S.A.M.; Nascimento, M.C.; Andrade, E.L.; Silva, D.J.R.P.; Diniz, F.A.B. Impactos do uso da terra no complexo estuarino-lagunar mundaú-manguaba—Celmm, Alagoas, Brasil. In Proceedings of the Simpósio Brasileiro de Sensoriamento Remoto, Curitiba, Brazil, 30 April–5 May 2011.
30. Melo-Magalhães, E.; Medeiros, P.; Lira, M.; Koenig, M.; Moura, A. Determination of eutrophic areas in mundaú/manguaba lagoons, Alagoas-Brazil, through studies of the phytoplanktonic community. *Braz. J. Biol.* **2009**, *69*, 271–280. [[CrossRef](#)] [[PubMed](#)]
31. American Public Health Association; Eaton, A.D.; American Water Works Association; Water Environment Federation. *Standard Methods for the Examination of Water and Wastewater*; APHA-AWWA-WEF: Washington, DC, USA, 2005.
32. Vermote, E.F.; Vermeulen, A. *Atmospheric Correction Algorithm: Spectral Reflectances (MOD09)*; Algorithm Technical Background Document (ATBD); University of Maryland: College Park, MD, USA, 1999.
33. Ibanez, F.; Conversi, A. Prediction of missing values and detection of 'exceptional events' in a chronological planktonic series: A single algorithm. *Ecol. Model.* **2002**, *154*, 9–23. [[CrossRef](#)]
34. Jackson, J.E. Getting started. In *A User's Guide to Principal Components*; John Wiley & Sons, Inc.: Hoboken, NJ, USA, 2004; pp. 4–25.
35. Richman, M.B. Rotation of principal components. *J. Climatol.* **1986**, *6*, 293–335. [[CrossRef](#)]
36. Uvo, C.B.; Graham, N.E. Seasonal runoff forecast for northern South America: A statistical model. *Water Resour. Res.* **1998**, *34*, 3515–3524. [[CrossRef](#)]
37. Lyra, G.B.; Oliveira-Júnior, J.F.; Zeri, M. Cluster analysis applied to the spatial and temporal variability of monthly rainfall in Alagoas state, Northeast of Brazil. *Int. J. Climatol.* **2014**, *34*, 3546–3558. [[CrossRef](#)]
38. Ter Braak, C.J. Canonical Correspondence Analysis: A New Eigenvector Technique for Multivariate Direct Gradient Analysis. *Ecology* **1986**, *67*, 1167–1179. [[CrossRef](#)]
39. Londe, L.R.; Novo, E.M.L.M.; Barbosa, C.; Araujo, C.A.S. Water residence time affecting phytoplankton blooms: Study case in Ibitinga Reservoir (São Paulo, Brazil) using Landsat/TM images. *Braz. J. Biol.* **2016**, *76*, 664–672. [[CrossRef](#)] [[PubMed](#)]
40. Souza, A.P. Avaliação do Efeito do Assoreamento na Hidrodinâmica e no Tempo de Residência de um Complexo Estuarino Lagunar Tropical. Ph.D. Thesis, Federal University of Alagoas, Alagoas, Brazil, 2017.
41. De Brito, A.N., Jr.; Fragoso, C.R., Jr.; Larson, M. Tidal exchange in a choked coastal lagoon: A study of Mundaú lagoon in Northeastern Brazil. *Reg. Stud. Mar. Sci.* **2018**, *17*, 133–142. [[CrossRef](#)]
42. Lins, R.C.; Fragoso, C.R., Jr.; Cirilo, J.A. Simulações da hidrodinâmica no complexo estuarino lagunar mundaú-manguaba—Celmm/al. In *XX Simpósio Brasileiro de Recursos Hídricos*; ABRH: Bento Gonçalves, Brazil, 2013.
43. Costa, T.L.F.; Araújo, M.P.; Knoppers, B.A.; Carreira, R.S. Sources and distribution of particulate organic matter of a tropical estuarine-lagoon system from NE Brazil as indicated by lipid biomarkers. *Aquat. Geochem.* **2011**, *17*, 1–19. [[CrossRef](#)]
44. Wainger, L.; Yu, H.; Gazenski, K.; Boynton, W. The relative influence of local and regional environmental drivers of algal biomass (chlorophyll-a) varies by estuarine location. *Estuar. Coast. Shelf Sci.* **2016**, *178*, 65–76. [[CrossRef](#)]
45. Maioli, O.L.G.; Rodrigues, K.C.; Knoppers, B.A.; Azevedo, D.A. Polycyclic aromatic and aliphatic hydrocarbons in Mytella charruana, a bivalve mollusk from Mundaú lagoon, Brazil. *Microchem. J.* **2010**, *96*, 172–179. [[CrossRef](#)]
46. Reynolds, C.S. The long, the short and the stalled: On the attributes of phytoplankton selected by physical mixing in lakes and rivers. In *Phytoplankton in Turbid Environments: Rivers and Shallow Lakes, Proceedings of the 9th Workshop of the International Association of Phytoplankton Taxonomy and Ecology (IAP), Mont Rigi, Belgium, 10–18 July 1993*; Descy, J.-P., Reynolds, C.S., Padisák, J., Eds.; Springer: Dordrecht, The Netherlands, 1994; pp. 9–21.
47. Pereira-Barros, J.B. Fisiologia do Sururu do Nordeste do Brasil—Mytella falcata (D'Orbigny, 1846)—da Lagoa Mundaú, Maceió, Alagoas: Resistência e Crescimento sob Variações da Salinidade no Ambiente Natural. Ph.D. Thesis, Universidade Federal de São Paulo, São Paulo, Brazil, 1972.

48. Cotovicz Junior, L.C.; Brandini, N.; Knoppers, B.A.; Mizerkowski, B.D.; Sterza, J.M.; Ovalle, A.R.C.; Medeiros, P.R.P. Assessment of the trophic status of four coastal lagoons and one estuarine delta, eastern brazil. *Environ. Monit. Assess.* **2013**, *185*, 3297–3311. [[CrossRef](#)] [[PubMed](#)]
49. Dang, T.C.; Fujii, M.; Rose, A.L.; Bligh, M.; Waite, T.D. Characteristics of the freshwater cyanobacterium microcystis aeruginosa grown in iron-limited continuous culture. *Appl. Environ. Microbiol.* **2012**, *78*, 1574–1583. [[CrossRef](#)] [[PubMed](#)]



© 2018 by the authors. Licensee MDPI, Basel, Switzerland. This article is an open access article distributed under the terms and conditions of the Creative Commons Attribution (CC BY) license (<http://creativecommons.org/licenses/by/4.0/>).