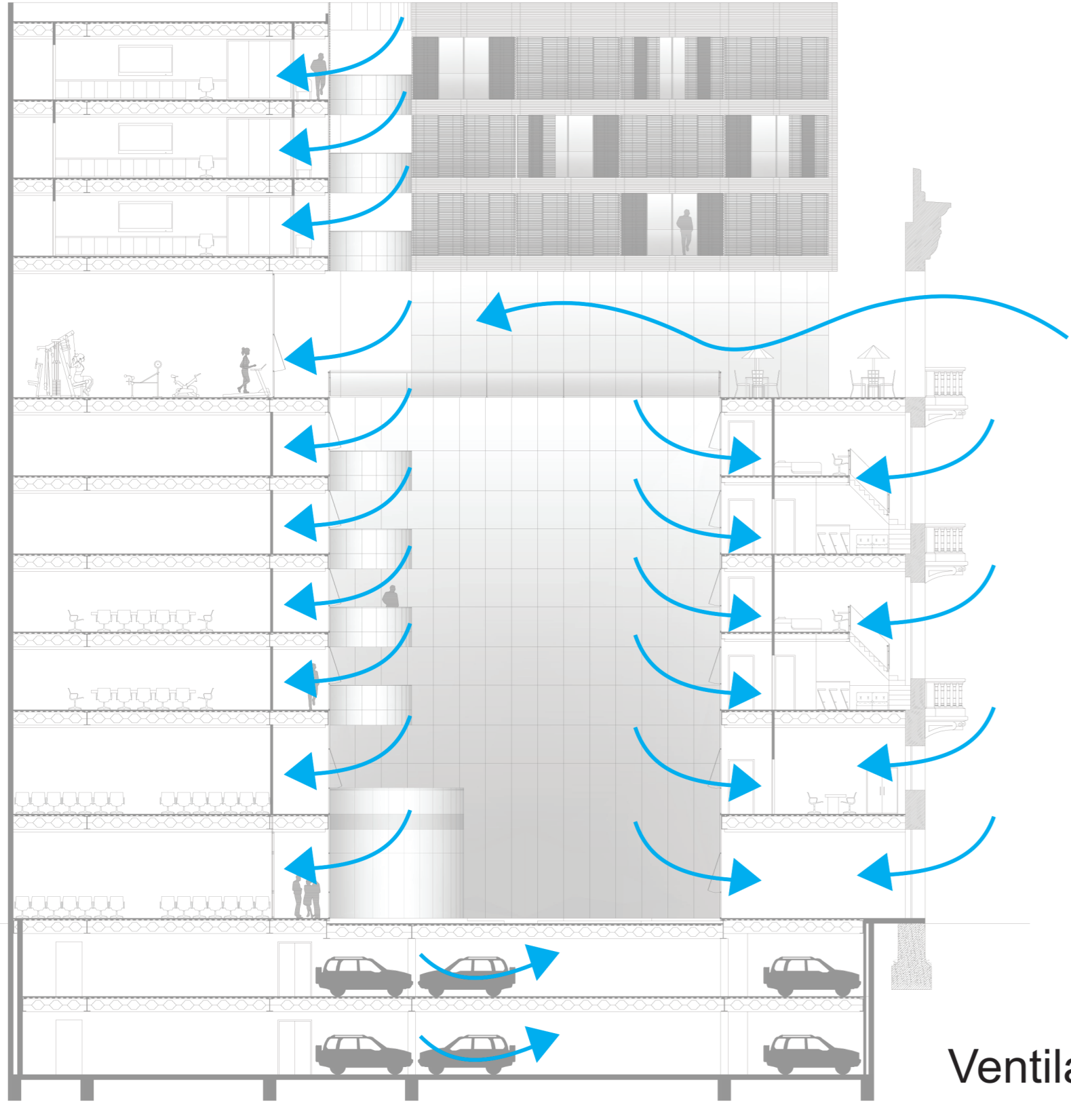
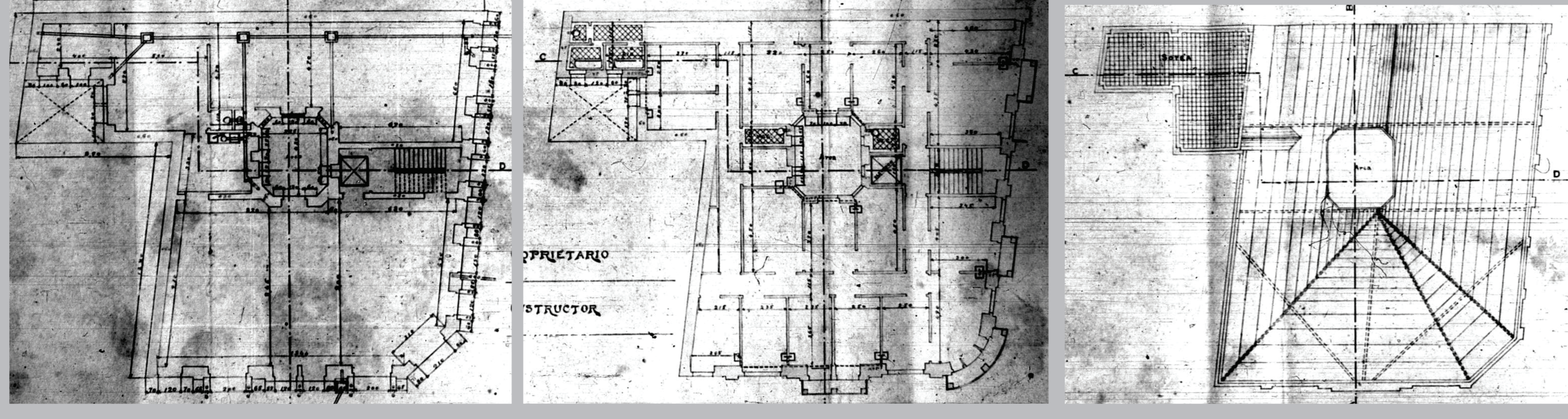
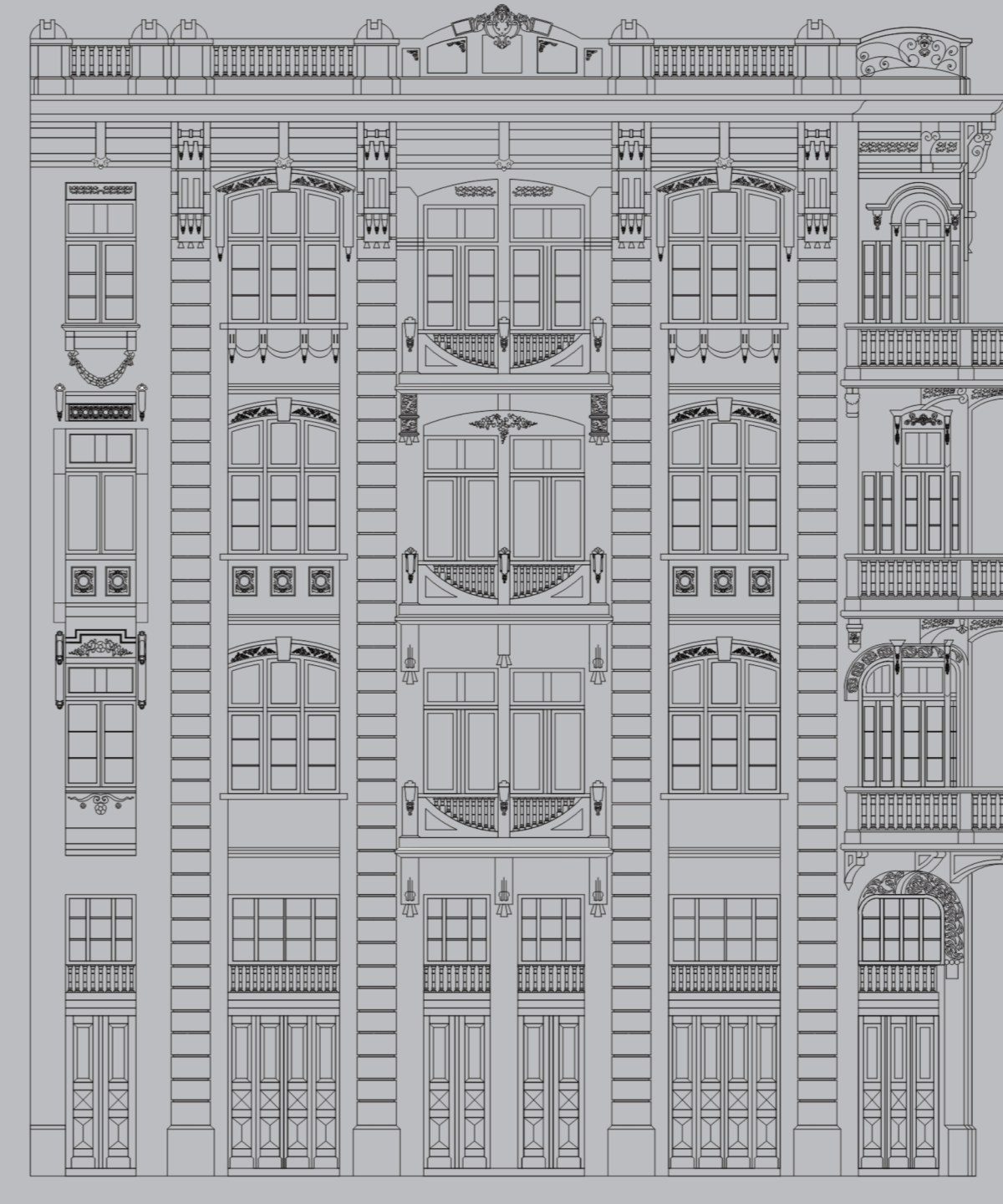
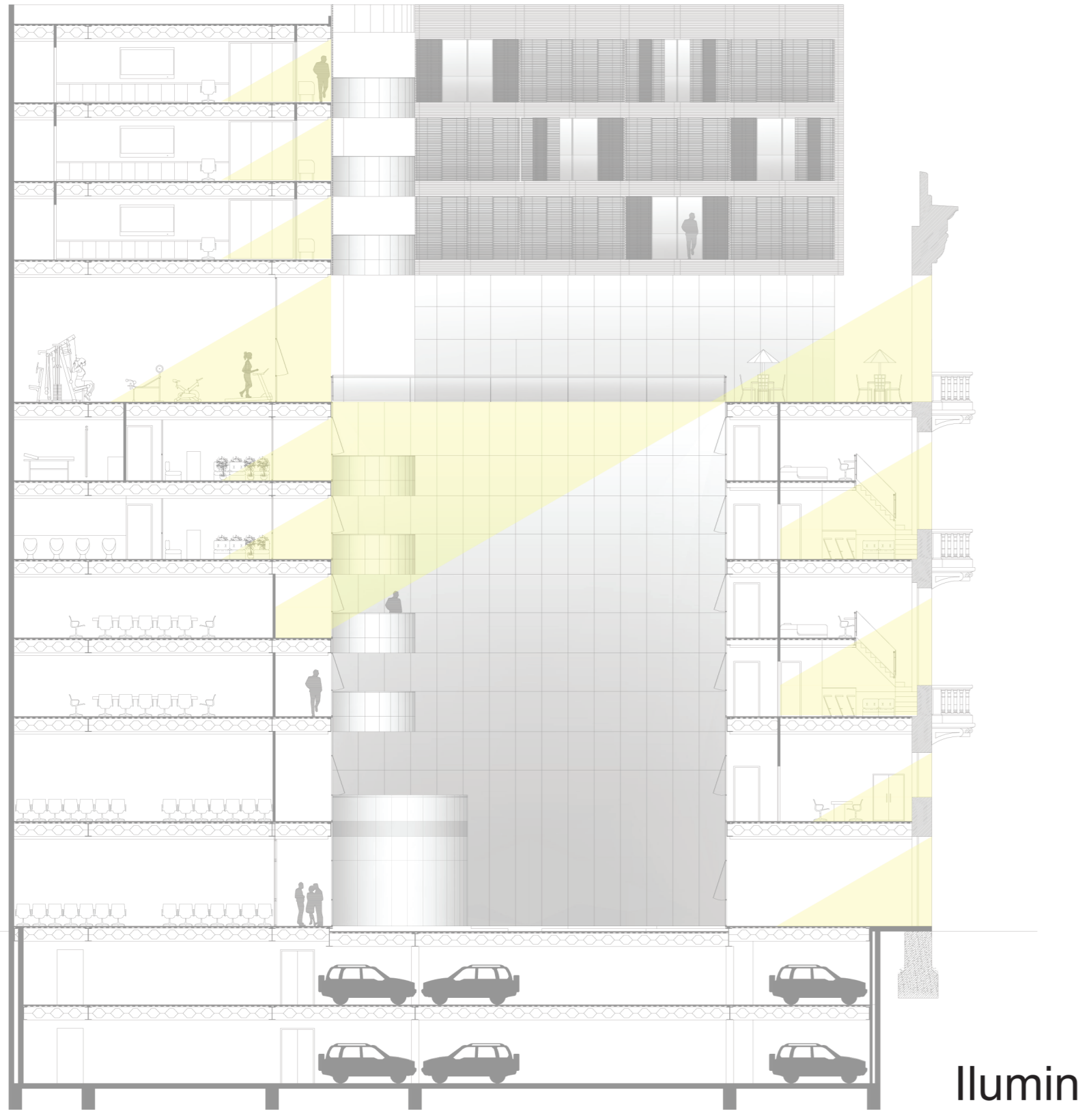


LEVANTAMENTO

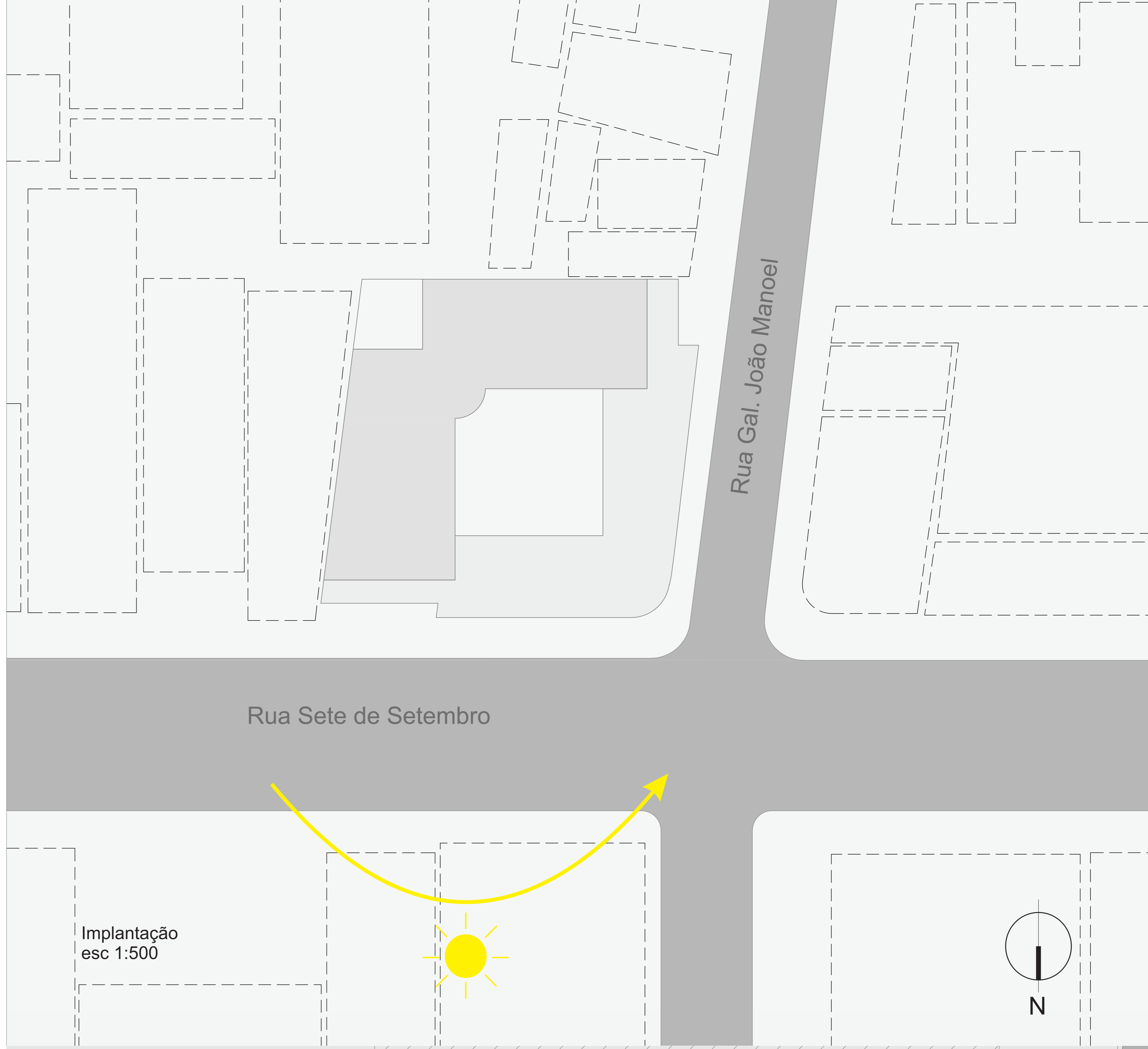
A área de intervenção do projeto é formada pelo terreno do antigo Hotel Nacional agregado aos dois lotes vizinhos, alinhados às fachadas norte e oeste.



Ventilação natural



Iluminação natural

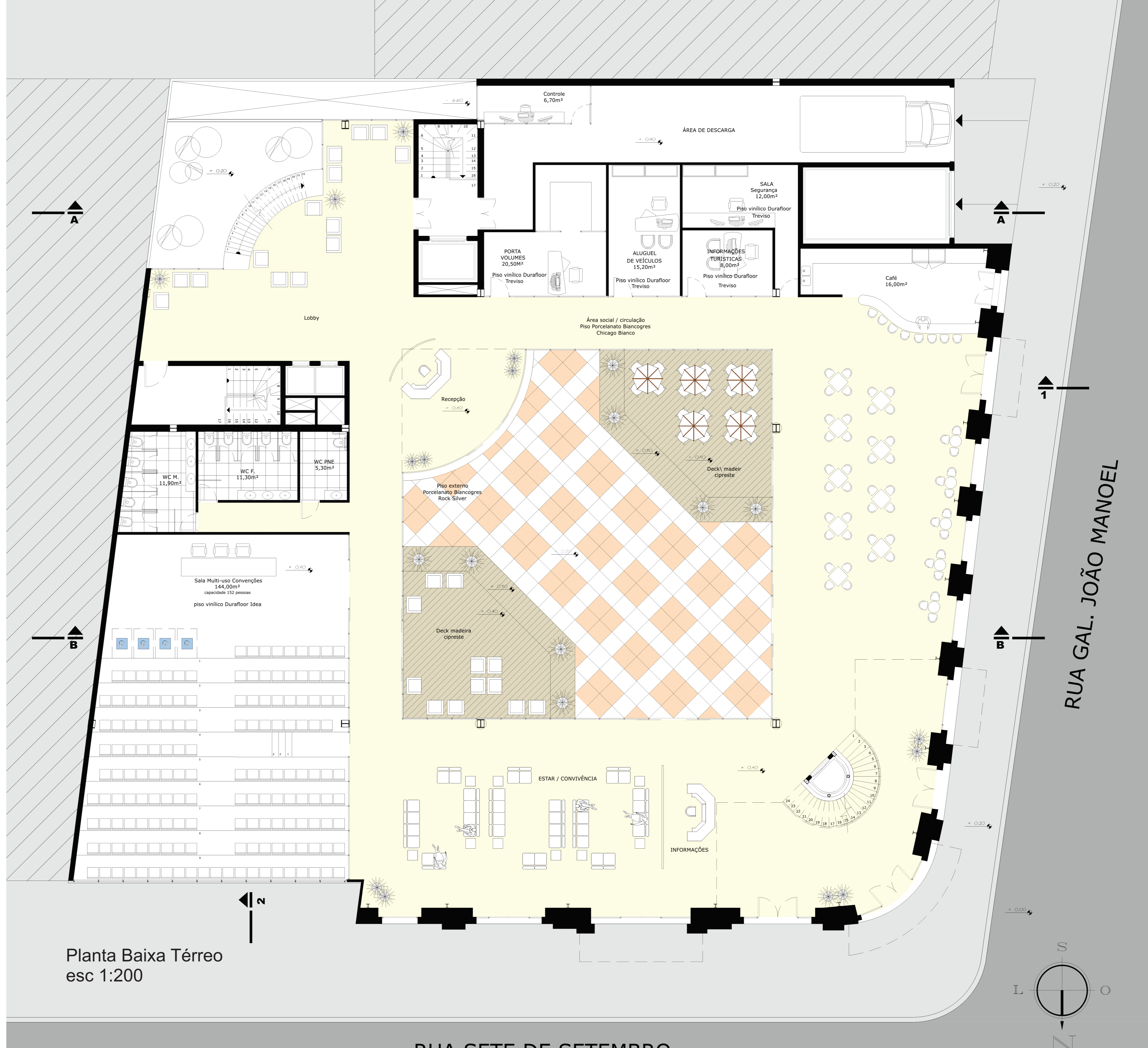
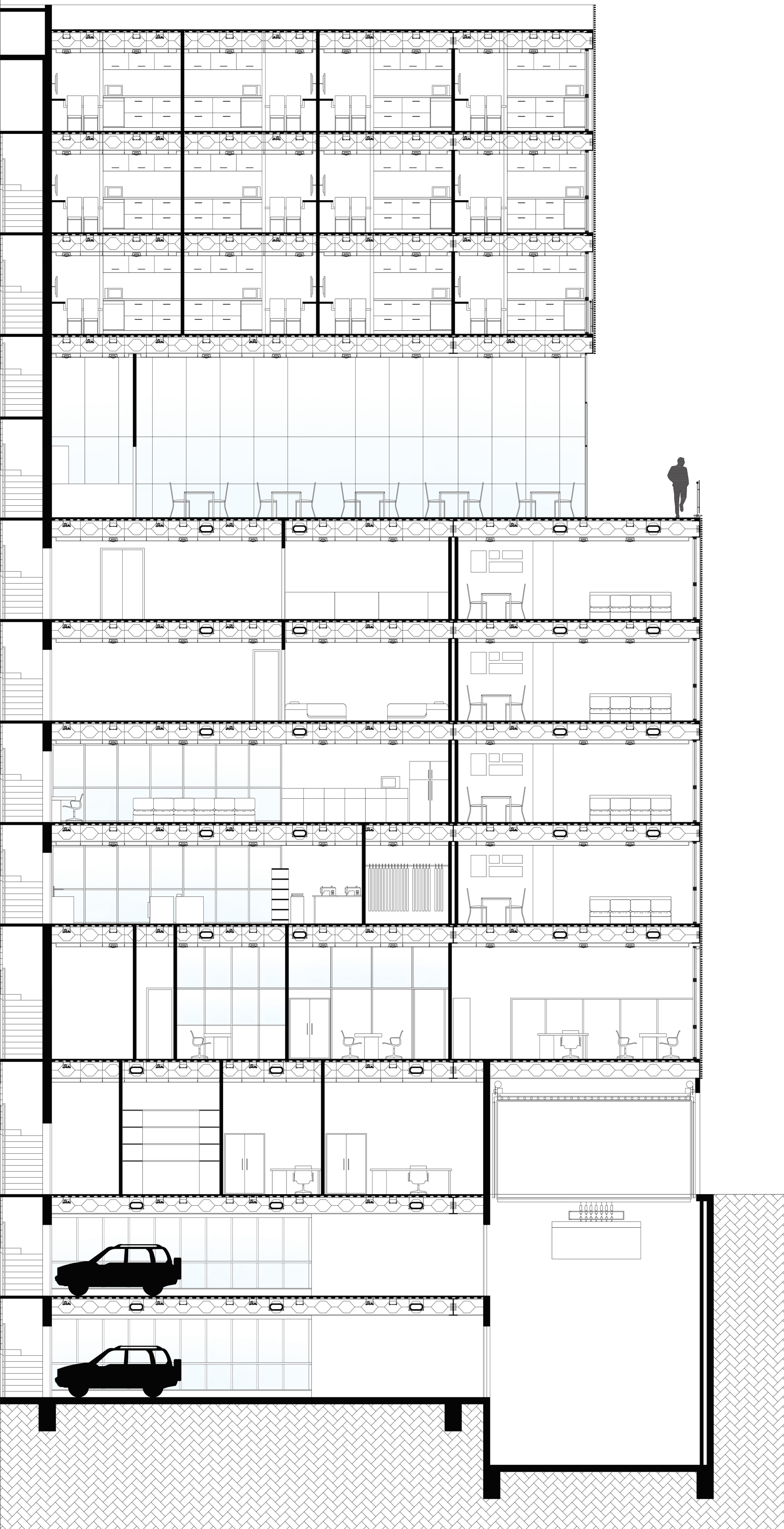


Rua Sete de Setembro

Rua Gal. João Manoel

Implantação
esc 1:500

N



Planta Baixa Térreo
esc 1:200

RUA SETE DE SETEMBRO

RUA GAL. JOÃO MANOEL

